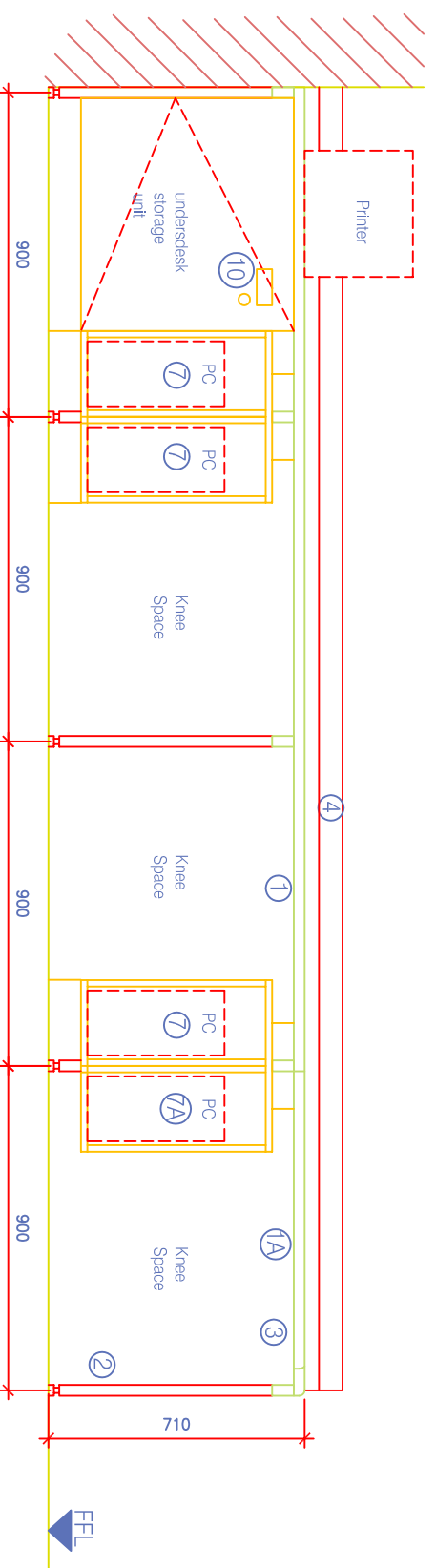
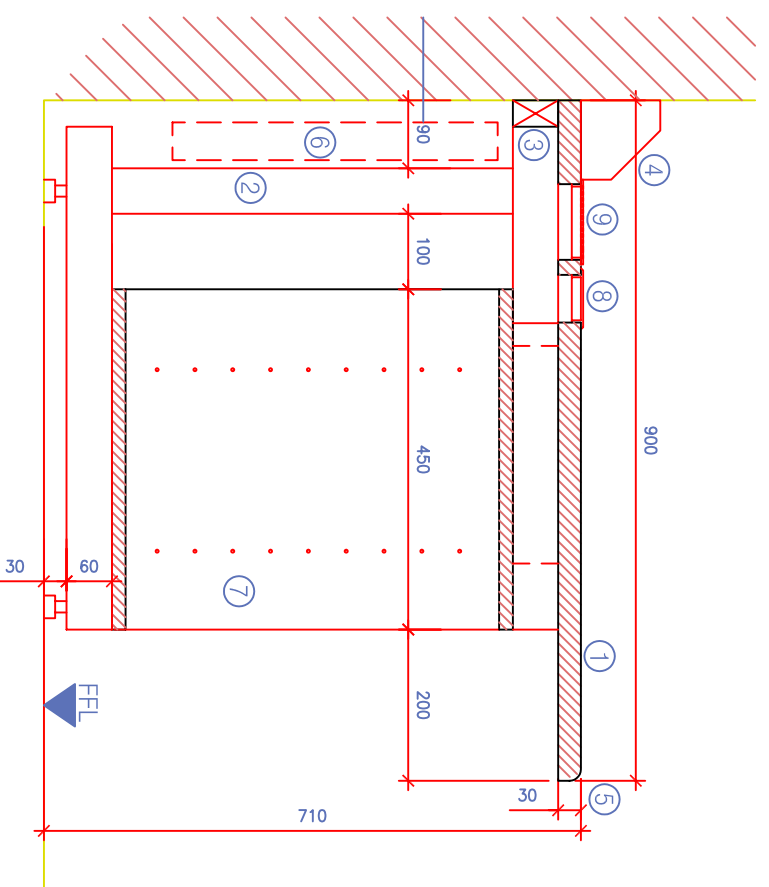


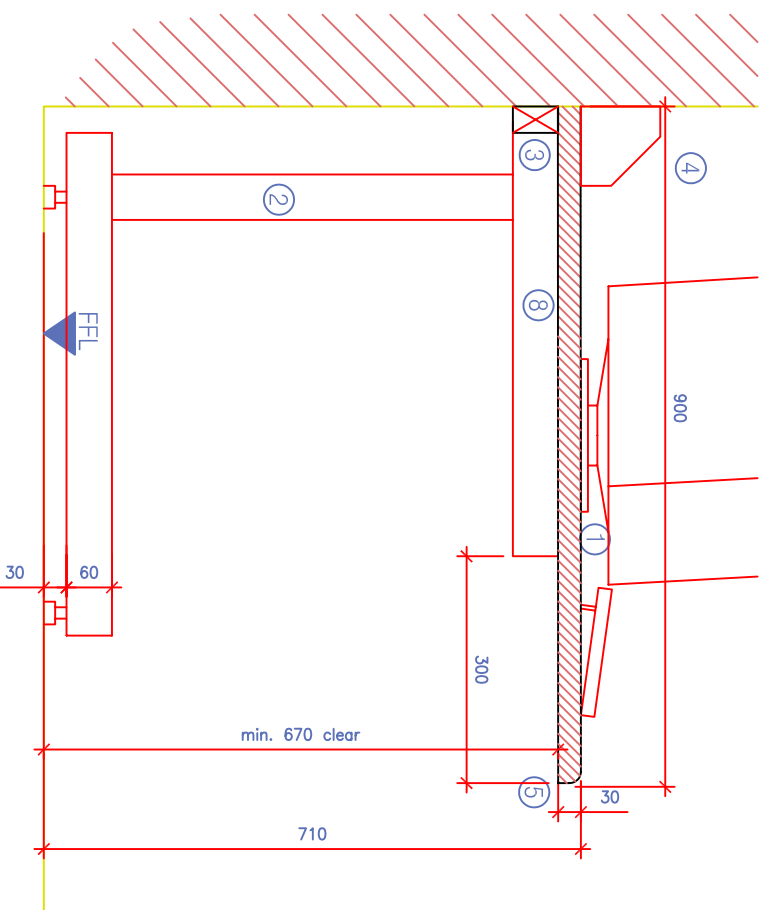
plan



elevation a-a



section b-b



section c-c

Legend:

1. 30 mm thick MDF worktop with decorative high pressure laminate.
- 1A. Removable worktop - edges of both parts of the worktop should be finished in coloured core edging.
2. Metal Frame: C Shaped metal frame, epoxy powder coated.
3. 35mm thick continuous SW bearer fixed to wall
4. Bench type dado trunking.
Design team to coordinate with perimeter trunking.
5. Worktop edge: Exposed corner to be rounded or chamfered.
6. Possible radiator position.
7. Option 1: PC holder Powder coated mild steel. Allow ventilation to rear of holder.
Option 2: PC holder 18 mm MDF with decorative high pressure laminate and powder coated MS frame fixed to C-shaped frame.
- 7A. Removable PC holder.
8. Desk Grommets with covers in colour to match worktop
9. Slotted aluminium/steel grilles approx. size 100 mm wide x 500 mm long to cover full length of radiator, 50 mm spaces between grilles.
(note: not shown on plan layout)
10. Ironmongery: Stainless steel recessed door handles reverse fixed through door. Self-closing hinges and high quality cylinder type lock.
11. Door: 20 mm MDF with adjustable shelf
(on steel plug-in shelf supports, capacity 100 kg) all with decorative high pressure laminate.

Minimum Standards for materials and finishes:

Core material for worktops, doors and carcasses:
Dry Fibre Board (MDF) to I.S. EN 622-5 Class E1 formaldehyde content tested to EN 120.
Moisture resistant board to I.S. EN 622-5 MDF-H, class E1 formaldehyde content tested to EN 120.

Core materials to be finished with plastic laminates to comply with I.S EN 438, grade HGS/HGP (including vertical panels, shelves and doors).
Balancing laminate to be used in all cases.

Edges of all laminated panels (if not postformed) to be finished with solid colour laminate (2 mm thickness), PVC or hardwood edges to seal all edges.

Solid timber to comply with IS EN 942, Class J10.
FSC/PEFC chain of custody certification required for all timber and timber products, including MDF.

Metal frames:
Generally 60X30 mm mild steel frame with welded end caps and adjustable feet. Epoxy powder coated to selected RAL colour.

Ironmongery:
Stainless steel door handles, reversed fixed through doors. High quality stainless steel or nickel plated self-closing hinges (180°) and high quality cylinder style lock on masterkey system to suit the school's requirements.

Hardwood plinth size to be coordinated with skirting height in rooms.

Note:
Alternative materials and finishes of equal or higher specification and performance are permitted.
Drawings to be read in conjunction with specification.
Minimum work top height to be 710 mm.

COMPUTER WORKTOP - CWT

SCALE:	1:10/1:20
DRG No.:	001
DATE:	JUNE '10
CHECKED BY :	
PREPARED BY:	

