

- Legend:**
1. 30 mm thick MDF worktop with decorative high pressure laminate.
Note: Highly reflective white surface not suitable.
 - 1a. Removable worktop - edges of both parts of the worktop should be finished in coloured core edging.
 2. Metal Frame: C Shaped metal frame, epoxy powder coated.
 3. Basket/cradle for tower processor to have good air circulation.
Note: 35 mm thick continuous SW bearer to receive upstand.
 4. Bench type dado trunking. Design team to coordinate with perimeter trunking.
 - 4a. Alternative Trunking Location
 5. Worktop edge: Exposed corner to be rounded or chamfered.
 6. Desk Grommets with covers in colour to match worktop
- Notes:** 3 no. baskets/cradles to be fitted, per bench - see drawing Computer Worktop 001
- 150 mm upstand required - see Room Layout RT 18.1

Minimum Standards for materials and finishes:

Core material for worktops, doors and carcasses:
Dry Fibre Board (MDF) to I.S. EN 622-5 Class E1 formaldehyde content tested to EN 120.
Moisture resistant board to I.S. EN 622-5 MDF-H, class E1 formaldehyde content tested to EN 120.

Core materials to be finished with plastic laminates to comply with I.S. EN 438, grade HGS/HGP (including vertical panels, shelves and doors).
Balancing laminate to be used in all cases.

Edges of all laminated panels (if not postformed) to be finished with solid colour laminate (2 mm thickness), PVC or hardwood edges to seal all edges.

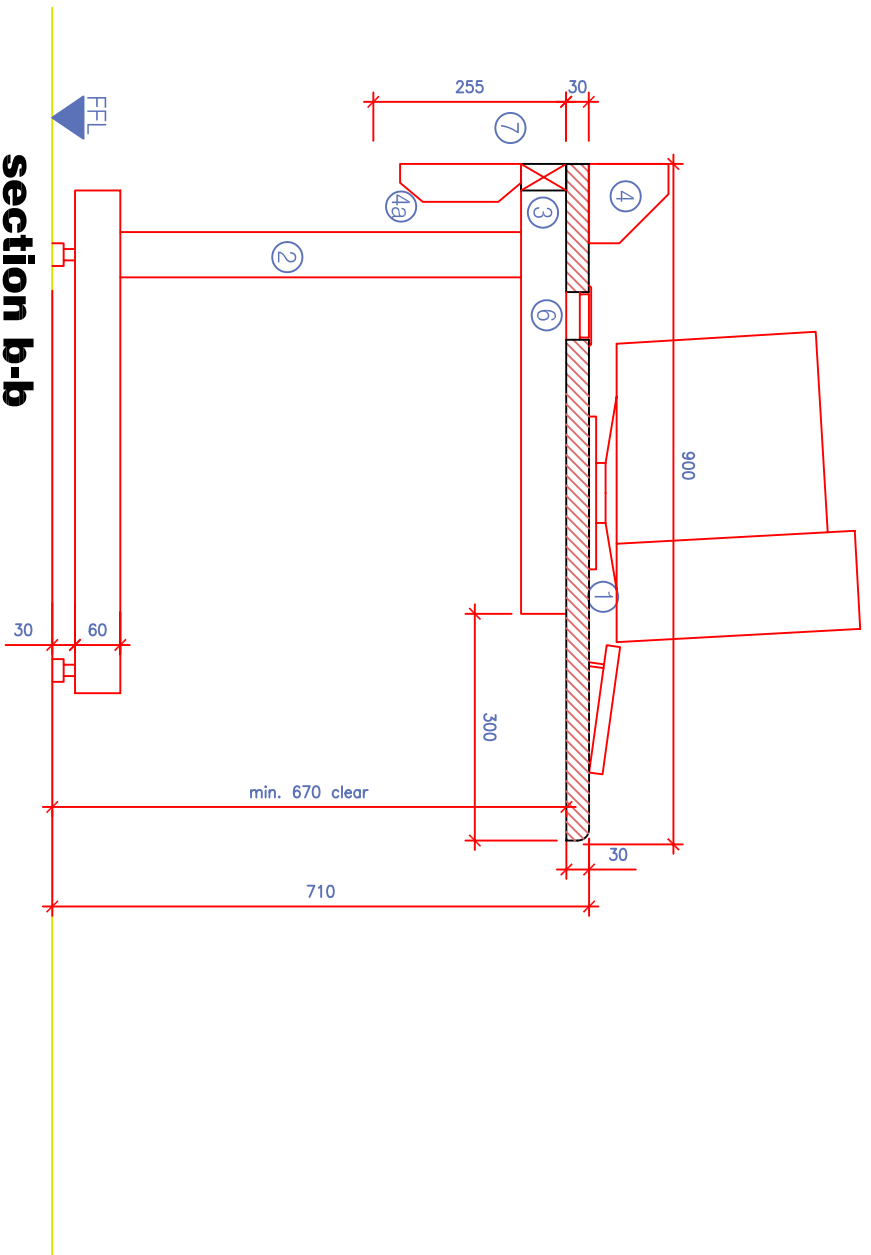
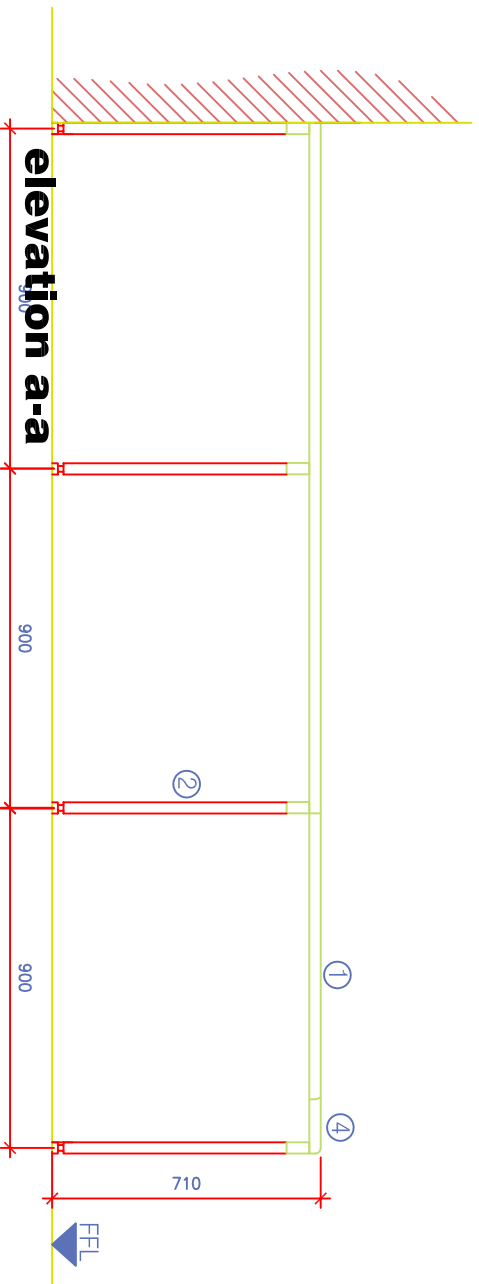
Solid timber to comply with IS EN 942, Class J10.
FSC/PEFC chain of custody certification required for all timber and timber products, including MDF.

Metal frames:
Generally 60X30 mm mild steel frame with welded end caps and adjustable feet. Epoxy powder coated to selected RAL colour.

Ironmongery:
Stainless steel door handles, reversed fixed through doors. High quality stainless steel or nickel plated self-closing hinges (180°) and high quality cylinder style lock on masterkey system to suit the school's requirements.

Hardwood plinth size to be coordinated with skirting height in rooms.

Note:
Alternative materials and finishes of equal or higher specification and performance are permitted.
Drawings to be read in conjunction with specification.



WORKTOP DESIGN AND COMMUNICATION GRAPHICS

SCALE:	1:10/1:20
DRG No:	016
DATE:	SEPT '10
CHECKED BY :	DN, RL
PREPARED BY:	