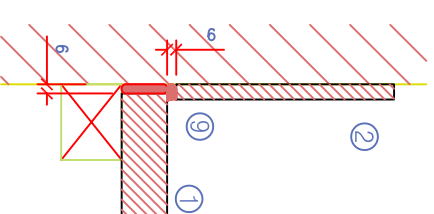
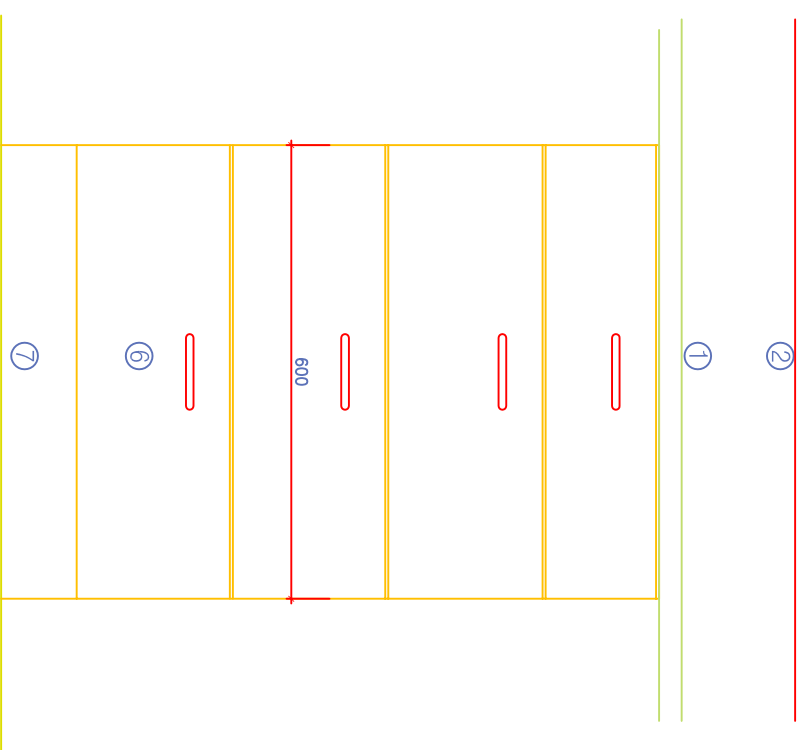


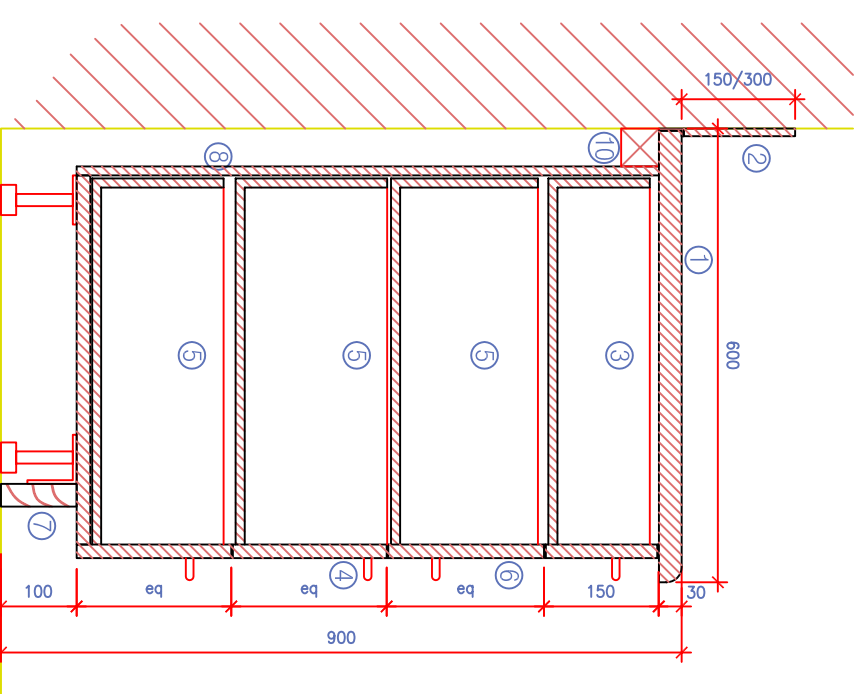
plan



worktop/mastic seal detail
scale 1:5



elevation a-a



section b-b

- Legend:
- 30 mm thick moisture resistant MDF worktop with decorative high pressure laminate.
 - Splashback (to be selected by designer):
Option 1 - 150 x 6 mm solid core laminate, finish to match worktop.
Option 2: tiled splashback min. 300 mm high
 - Shallow depth cutlery drawer with plastic cutlery divider full drawer size. Drawer sides and back and bottom MDF with decorative high pressure laminate. Ball bearing drawer runners, front disconnecting and stay-closed feature.
 - Ironmongery: Stainless steel "D" shape handle. 180° self closing hinges cylinder type locks.
 - Drawer sides and back and bottom 12 mm thick MDF with decorative high pressure laminate. Ball bearing drawer runners, front disconnecting and stay-closed feature.
 - 18 mm thick MDF drawer fronts with high pressure decorative laminate.
 - Lacquered hardwood plinth 100 x 25 mm with adjustable carcass support feet
 - 12 mm thick MDF back panel with high pressure decorative laminate.
 - Mastic seal to specification
 - SW battens to contractor's design

Minimum Standards for materials and finishes:

Core material for worktops, doors and carcasses:
Dry Fibre Board (MDF) to I.S. EN 622-5 Class E1 formaldehyde content tested to EN 120.
Moisture resistant board to I.S. EN 622-5-MDF-H, class E1 formaldehyde content tested to EN 120.

Core materials to be finished with plastic laminates to comply with I.S. EN 438, grade HGS/HGP (including vertical panels, shelves and doors).
Balancing laminate to be used in all cases.

Edges of all laminated panels (if not postformed) to be finished with solid colour laminate (2 mm thickness), PVC or hardwood edges to seal all edges.

Solid timber to comply with IS EN 942, Class J10.
FSC/PEFC chain of custody certification required for all timber and timber products, including MDF.

Metal frames:
Generally 60X30 mm mild steel frame with welded end caps and adjustable feet. Epoxy powder coated to selected RAL colour.

Ironmongery:
Stainless steel door handles, reversed fixed through doors. High quality stainless steel or nickel plated self-closing hinges (180°) and high quality cylinder style lock on masterkey system to suit the school's requirements.

Hardwood plinth size to be coordinated with skirting height in rooms.

Note:
Alternative materials and finishes of equal or higher specification and performance are permitted.
Drawings to be read in conjunction with specification.

DRAWER UNIT - DU		SCALE:	1:5/1:10
		DRG No:	040
REVISION:	CHECKED BY :	DATE:	JUNE '09
REMARKS:	PREPARED BY:		

