

# **Shellfish Pollution Reduction Programme**

As required by Article 5 of the Shellfish Water Directive 2006/113/EC and  
Section 6 of the Quality of Shellfish Waters Regulations, 2006 (S.I. No. 268 of 2006)

## **Characterisation Report Number 10**

**MANNIN BAY SHELLFISH AREA  
COUNTY GALWAY**



# TABLE OF CONTENTS

LIST OF FIGURES .....	4
LIST OF TABLES .....	5
ABBREVIATIONS .....	6
1.0 INTRODUCTION .....	7
1.1 Aims and responsibility .....	7
1.2 Shellfish water quality parameters.....	7
1.3 Designated shellfish areas.....	10
1.4 Development of Shellfish Pollution Reduction Programmes .....	11
1.5 Assessment of Shellfish Pollution Reduction Programmes.....	11
1.6 Links with the River Basin Management Plans.....	12
1.7 Layout of the Shellfish Pollution Reduction Programmes .....	12
2.0 GENERAL CHARACTERISTICS .....	14
2.1 Protected areas .....	14
2.2 Shellfish growing activity .....	14
3.0 WATER QUALITY IN THE SHELLFISH AREA.....	16
4.0 CHARACTERISATION MAPS .....	18
5.0 PRESSURES.....	51
5.1 Marine Pressures.....	53
5.1.1 Point source pressures.....	54
5.1.2 Morphology pressures.....	54
Fishing gear activity.....	54
Physical modifications .....	55
5.2 Land-based Pressures.....	56
5.2.1 Point Source Pressures.....	57
5.2.2 Diffuse Source Pressures .....	58
On-site waste water treatment systems .....	58
Agriculture .....	58
Forestry .....	59
5.2.3 Morphology Pressures .....	60
5.3 Summary of Key Pressures.....	61
5.3.1 Key Pressures.....	61
5.3.2 Potential Secondary Pressures .....	61

## LIST OF FIGURES

FIGURE 1 - 63 designated shellfish areas .....	10
MAP 1 - Designated shellfish area .....	22
MAP 2 - Licensed shellfish areas .....	23
MAP 3 - Contributing catchment.....	24
MAP 4 - Topography .....	25
MAP 5 - Soil wetness .....	26
MAP 6 - Vulnerability of groundwater to pathogens from subsoil discharges .....	27
MAP 7 - Vulnerability of groundwater to phosphorus from subsoil discharges .....	28
MAP 8 - Vulnerability of surface waters to pathogens from subsoil discharges.....	29
MAP 9 - Vulnerability of surface waters to phosphorus from subsoil discharges .....	30
MAP 10 - Likelihood of inadequate percolation in sub-soils .....	31
MAP 11 - Designated protected areas .....	32
MAP 12 - WFD surface water status .....	33
MAP 13 - Diffuse risk assessment.....	34
MAP 14 - Licensed finfish areas .....	35
MAP 15 - Fishing gear activity.....	36
MAP 16 - Marine structures .....	37
MAP 17 - Marine physical modifications.....	38
MAP 18 - Municipal waste water systems .....	39
MAP 19 - Pig units and finfish farms .....	40
MAP 20 - Industrial point source pressures.....	41
MAP 21 - On-site waste water systems .....	42
MAP 22 - Dairy and drystock livestock units.....	43
MAP 23 - Nitrogen fertiliser usage.....	44
MAP 24 - Phosphorus fertiliser usage .....	45
MAP 25 - Forestry types with acidification risk areas .....	46
MAP 26 - Forestry types with eutrophication risk areas .....	47
MAP 27 - Forestry types with sedimentation risk areas .....	48
MAP 28 - Freshwater structures .....	49
MAP 29 - Freshwater physical modifications .....	50

## LIST OF TABLES

TABLE 1 - Parameters listed in Annex I of the Shellfish Water Directive.....	7
TABLE 2 - Shellfish licensed areas.....	15
TABLE 3 - List of maps .....	18
TABLE 4 - Summary of pressures.....	52
TABLE 5 - Fishing gears.....	54
TABLE 6 - Marine morphology structures.....	54
TABLE 7- Physical modifications.....	55
TABLE 8 - On-site waste water treatment systems.....	58
TABLE 9 - Livestock units and chemical fertiliser usage.....	58
TABLE 10 - Forestry types.....	59

## **ABBREVIATIONS**

<b>AA</b>	Appropriate Assessment
<b>BOD</b>	Biochemical Oxygen Demand
<b>CFB</b>	Central Fisheries Board
<b>CSO</b>	Combined Sewer Overflow
<b>DED</b>	District Electoral Division
<b>DEHLG</b>	Department of Environment Heritage and Local Government
<b>DO</b>	Dissolved Oxygen
<b>EPA</b>	Environmental Protection Agency
<b>EU</b>	European Union
<b>Ha</b>	Hectare
<b>IPPC</b>	Integrated Pollution Prevention Control
<b>Kg</b>	Kilogram
<b>LU</b>	Livestock Units
<b>NACE</b>	European industrial activity classification
<b>MI</b>	Marine Institute
<b>NPWS</b>	National Parks and Wildlife Service
<b>OSWWTs</b>	On-Site Waste Water Treatment System
<b>P.E.</b>	Population Equivalent
<b>PRP</b>	Pollution Reduction Programme
<b>RBD</b>	River Basin District
<b>RBMP</b>	River Basin Management Plan
<b>SAC</b>	Special Area of Conservation
<b>SEA</b>	Strategic Environmental Assessment
<b>SFPA</b>	Sea Fisheries Protection Authority
<b>SPA</b>	Special Protection Area
<b>SWMC</b>	Shellfish Waters Management Committee
<b>TCE</b>	Tetrachloroethylene
<b>WFD</b>	Water Framework Directive
<b>WSIP</b>	Water Services Investment Programme
<b>WTP</b>	Water Treatment Plant
<b>WWTP</b>	Waste Water Treatment Plant

## 1.0 INTRODUCTION

Article 5 of the Shellfish Directive (2006/113/EC) and section 6 of the Quality of Shellfish Waters Regulations (S.I. No. 268 of 2006) require the development of Pollution Reduction Programmes (PRPs) for designated shellfish areas in order to support shellfish life and growth and to contribute to the high quality of directly edible shellfish products. Shellfish PRPs relate to bivalve and gastropod molluscs, including oysters, mussels, cockles, scallops and clams. They do not cover shellfish crustaceans such as crabs, crayfish and lobsters.

### 1.1 Aims and responsibility

The objectives of Shellfish PRPs are to:

- Protect or improve water quality in designated shellfish areas;
- Achieve compliance with water quality parameter values outlined in Annex I of the Shellfish Waters Directive (2006/113/EC) and Schedules 2 and 4 of the Quality of Shellfish Waters Regulations (S.I. No. 268 of 2006);
- Determine the factors responsible for any non-compliances with the water quality parameter values; and
- Ensure that implementation of the Shellfish PRPs does not lead, directly, or indirectly, to increased pollution of coastal and brackish waters.

Under the Regulations, the Department of Communications, Marine and Natural Resources is responsible for the development of Shellfish PRPs. However, this responsibility was transferred to the Department of the Environment, Heritage and Local Government (DEHLG) on 5<sup>th</sup> November 2008. An Inter-Departmental /Inter Agency Shellfish Waters Management Committee (SWMC) supports the Department in the development of the Shellfish PRPs.

The Regulations also place an obligation on every public authority to perform its functions in a manner that promotes compliance with the Directive and the Regulations, and to take such actions as are necessary to secure compliance with the Directive and the Regulations and with the Shellfish PRPs.

### 1.2 Shellfish water quality parameters

Compliance with the directive is measured against achievement of shellfish water quality parameter values outlined in Annex I of the Shellfish Waters Directive (2006/113/EC) and Schedules 2 and 4 of the Quality of Shellfish Waters Regulations (S.I. No. 268 of 2006). Table 1 summarizes these values. Mandatory (I) values must be fully achieved while it must be endeavoured to achieve guideline values (G).

TABLE 1 - Parameters listed in Annex I of the Shellfish Water Directive

Physical	Guideline Values (G)	Mandatory Values (I)
pH (pH units)		7 – 9 pH units
Temperature (°C)	A discharge affecting shellfish waters must not cause the	No mandatory value set in the Directive

	temperature of the waters to exceed by more than 2°C the temperature of waters not so affected	
Colouration (after filtration) (mg Pt/l)		A discharge affecting shellfish waters must not cause the colour of the waters after filtration to deviate by more than 10 mg Pt/l from the colour of unaffected waters
Suspended Solids (mg/l)		A discharge affecting shellfish waters must not cause the suspended solid content of the waters to exceed the content in unaffected waters by more than 30%
Salinity (%)	12 to 38%	≤ 40% A discharge affecting shellfish waters must not cause their salinity to exceed the salinity of unaffected waters by more than 10%
<b>Chemical</b>	<b>Guideline Value (G)</b>	<b>Mandatory Value (I)</b>
Dissolved oxygen (Saturation %)	≥ 80%	≥ 70% Should an individual measurement indicate a value lower than 70%, measurements shall be repeated An individual measurement may only indicate a value of less than 60% if there are no harmful consequences for the development of shellfish colonies
Petroleum hydrocarbons		Hydrocarbons must not be present in the shellfish water in such quantities as to: - produce a visible film on the surface of the water and/or a deposit on the shellfish - have harmful effects on the shellfish
Organohalogenated substances	The concentration of each substance in shellfish flesh must be so limited that it contributes in accordance with Article 1 (of the Directive), to the high quality of shellfish products	The concentration of each substance in the shellfish water or in shellfish flesh must not reach or exceed a level which has harmful effects on the shellfish larvae
Metals (Ag, As, Cd, Cr, Cu, Hg, Ni, Pb and Zn) (mg/L)	The concentration of each substance in shellfish flesh must be so limited that it contributes in accordance with Article 1 (of the Directive), to the high quality of shellfish products	The concentration of each substance in the shellfish water or in the shellfish flesh must not exceed a level which gives rise to harmful effects on the shellfish and their larvae The synergic effects of these metals must be taken into consideration
<b>Others</b>	<b>Guideline Value (G)</b>	<b>Mandatory Value (I)</b>
Faecal coliforms (per 100 mL)	≤ 300 per 100 mL in the shellfish flesh and intervalvular liquid	No mandatory value set in the Directive



Substances affecting the taste of shellfish		Concentration lower than liable to impair the taste of the shellfish
Saxitoxin (produced by dinoflagellates)	No limit given	No limit given

### 1.3 Designated shellfish areas

Fourteen shellfish areas were originally designated in 1994 under the Quality of Shellfish Waters Regulations (S.I. No. 200 of 1994, revoked by S.I. No. 268 of 2006). A further 49 areas were subsequently designated in 2009 under the European Communities (Quality of Shellfish Waters) (Amendment) Regulations, 2009 (S.I. No. 55 of 2009). All 63 designated sites are illustrated in Figure 1 below.



Note: Map numbers I to XIV refer to waters originally designated under the European Communities (Quality of Shellfish Waters) Regulations 2004 (S.I. No. 200 of 1994), while map numbers 1 to 45 refer to waters designated under the European Communities (Quality of Shellfish Waters) (Amendment) Regulations 2009 (S.I. 55 of 2009). The referenced maps can be found in the relevant regulatory documents.

FIGURE 1 - 63 designated shellfish areas

## **1.4 Development of Shellfish Pollution Reduction Programmes**

The Directive and Regulations require that any non-compliances with the shellfish water quality parameter values are identified. The Directive and Regulations further require that the factors responsible for such non-compliances are identified.

Information on impacts and pressures has therefore been collated in an individual characterisation report for each shellfish site from available inventories. The likelihood of the pressures to impact on shellfish water quality parameter values in the shellfish areas has been estimated.

Individual site Pollution Reduction Programmes (PRPs) and a supporting toolkit of measures outline the measures which can be used to control pressures where necessary to protect and improve water quality in a specific shellfish area.

The 2009 Shellfish PRPs (including the supporting characterisation reports and toolkit of measures) represent an initial phase of Shellfish PRP development, drawing on available information sources. Their development has been a desk-based exercise and they provide a good indication of the main pressures likely to be impacting on shellfish water quality and the measures that can be used to control those pressures. Ongoing assessment and monitoring of shellfish waters will be used to confirm the effectiveness of these programmes and to refine the programmes where necessary. As the shellfish monitoring database grows, and as programmes are implemented, incremental changes will be made to ensure compliance with the standards and objectives established.

PRPs produced during 2009 supersede Action Programmes which were developed in 2006 for the 14 original shellfish areas.

## **1.5 Assessment of Shellfish Pollution Reduction Programmes**

A Strategic Environmental Assessment (SEA) of the Shellfish PRPs and supporting toolkit of measures has been carried out in accordance with the requirements of the EU Strategic Environmental Assessment Directive (2001/42/EC). SEA is a process for evaluating, at the earliest appropriate stage, all of the possible environmental effects of plans or programmes before they are adopted while giving the public and other interested parties an opportunity to comment and to be kept informed of decisions and how they were made. The assessment of the PRPs resulted in mitigation of some of the measures contained in the PRPs and toolkit of measures that were identified as likely to lead to adverse effects on other aspects of the environment. The reports associated with the SEA process can be downloaded from [www.environ.ie](http://www.environ.ie).

An ‘Appropriate Assessment’ of the Shellfish PRPs has been carried out in parallel with the SEA assessment in accordance with the requirements of the EU Habitats Directive (92/43/EEC). Appropriate Assessment is a process for evaluating the implications of plans or programmes for sites which have been designated for the protection and conservation of habitats and species of European importance. The reports associated with the Appropriate Assessment can be downloaded from [www.environ.ie](http://www.environ.ie).

## **1.6 Links with the River Basin Management Plans**

The EU Water Framework Directive (2000/60/EC) provides a framework for the protection and restoration of the aquatic environment and terrestrial ecosystems and wetlands directly depending on the aquatic environment. In accordance with the requirements of the directive, River Basin Management Plans (RBMPs) were published in draft form in December 2008 with the final RBMPs published in December 2009. They are the primary plans in place in relation to the water environment for the foreseeable future.

Article 13(5) of the WFD states that ‘river basin management plans may be supplemented by the production of more detailed programmes and management plans for sub-basin, sector, issue, or water type, to deal with particular aspects of water management’. Shellfish PRPs are an example of such programmes. In addition, Article 13(4) and Annex VII of the WFD requires that RBMPs include ‘a register of any more detailed programmes and management plans for the River Basin District dealing with particular sub-basins, sectors, issues or water types, together with a summary of their contents’. The Shellfish PRPs are included in the registers of each of the River Basin Districts.

Articles 4 (1)(c) and 4 (2) of the WFD specify that, in relation to protected areas, where more than one of set of objectives relate to a given body of water, the most stringent shall apply. Designated shellfish areas are included in the WFD register of protected areas provided for in Articles 6 and 7 of the directive.

The WFD strengthens and consolidates a number of existing environmental directives while repealing others on a phased basis. The Shellfish Directive is due to be repealed by the WFD in 2013. Shellfish PRPs are therefore closely aligned with the RBMPs.

## **1.7 Layout of the Shellfish Pollution Reduction Programmes**

### ***Characterisation Report***

- **Section 1**  
Section 1 is an introductory section which puts the Characterisation Reports in context and outlines their contents.
- **Section 2**  
Section 2 describes the general characteristics of the designated shellfish areas as well as their contributing catchments.
- **Section 3**  
Section 3 describes water quality in the designated shellfish areas.
- **Section 4**  
Section 4 consists of a series of maps illustrating the general characteristics of the shellfish areas and catchments, as well as the marine and land-based pressures in the catchments.

- **Section 5**

Section 5 provides a series of tables summarising the marine and land-based pressures in the catchments. The likelihood of the pressures to impact on shellfish water quality parameters is discussed. A summary is also provided highlighting the key pressures and potential secondary pressures which are most likely to be impacting on shellfish water quality parameters. The discussions in this section draw on available information including information generated during the WFD implementation process and geographical features of significance. The differing nature of the pressures are also taken into account as pressures vary substantially in terms of how severely they are likely to impact on shellfish water quality parameters.

***Pollution Reduction Programmes***

- The Pollution Reduction Programmes summarise the specific measures for controlling the key and potential secondary pressures, identified in this characterisation report, which are most likely to be impacting on shellfish water quality in Mannin Bay shellfish area. This can be downloaded from [www.environ.ie](http://www.environ.ie).

***Toolkit of Measures***

- The supporting toolkit of measures outlines all of the measures available for controlling all of the pressures which can impact on shellfish water quality. Due to the close alignments between the Shellfish PRPs and the RBMPs, the toolkit is drawn from the programme of measures contained within the RBMPs. This strengthens the integration of shellfish management and wider water quality management policy in Ireland. The toolkit can be downloaded from [www.environ.ie](http://www.environ.ie).

## 2.0 GENERAL CHARACTERISTICS

Name	Mannin Bay Shellfish Area
Map number	10
Year of designation	2009
Area	3.9 km <sup>2</sup>
River Basin District	Western RBD
County	Galway
Location of sampling point	53 deg 27.517 min North (Lat) 10 deg 02.770 min West (Long)
Catchment area	16.68 km <sup>2</sup>
Adjacent shellfish are	Clifden Bay/Ardbear Bay

Mannin Bay is situated in County Galway in the Western River Basin District (Map 1). It is a west-facing bay bounded to the north by the Errislannan peninsula and to the south and east by the Ballyconneely peninsula. Apart from a few minor islands and rocky outcrops, the bay is open to the Atlantic and the tidal exchange in the bay is good.

The designated shellfish area within the bay is 3.9 km<sup>2</sup> in area. It covers the inner portion of Mannin Bay inside a line drawn across the channel east of Curhownagh to a point east of Salt Lough to the high water mark including the Mannin Rock Islands. Clifden Bay/Ardbear Bay designated shellfish area is situated in adjacent coastal waters to the north.

The contributing catchment of the shellfish area is almost 16.68 km<sup>2</sup> in area (Map 3). There are no major freshwater inputs. According to the 2006 Census there are 3,696 people living in the coastal area and river catchment of Mannin Bay. The main population centre is the town of Clifden with a population of 1,497. Other settlements are very small and scattered.

Agriculture, tourism and fishing are the main rural-based economic activities in the area. Sheep rearing is the main agricultural activity in the area. The land surrounding the proposed designated area is low-lying blanket bog with several nutrient-poor lakes. The estimated numbers of cattle and sheep in the catchment is c. 9,100 and 23,353 respectively (CSO 2000 survey).

### 2.1 Protected areas

The designated shellfish area lies within the Mannin Bay cSAC (Map 11). Other SACs which intersect the shellfish area's catchment are Connemara Complex and the Sylne Head Peninsula.

### 2.2 Shellfish growing activity

Table 2 summarises the number and area of shellfish licensed areas within the designated shellfish area. Oyster cultivation is predominant in the area (Map 2).

TABLE 2 - Shellfish licensed areas

Shellfish types	Number	Area	% Area
Abalone	0	0	0 %
Clams	0	0	0 %
Cockles	0	0	0 %
Lobsters	0	0	0 %
Scallops	0	0	0 %
Mussels	0	0	0 %
Oysters	7	2.7 km <sup>2</sup>	69 %
Sea Urchins	0	0	0 %
Periwinkles	0	0	0 %
Seaweed	0	0	0 %
Other	1	0.3 km <sup>2</sup>	7.7 %

### **3.0 WATER QUALITY IN THE SHELLFISH AREA**

Dedicated shellfish monitoring data has been collated and compared with shellfish water quality parameter mandatory and guideline values outlined in Annex I of the Shellfish Waters Directive (2006/113/EC) and Schedule 2 and 4 of the Quality of Shellfish Waters Regulations (S.I. No. 268 of 2006) (Table 1).

Additional monitoring data from other monitoring programmes has also been collated in order to highlight any water quality issues in the vicinity of the shellfish areas. This can aid in the identification of the pressures most likely to impact on the shellfish areas and thereby in the identification of any measures to be applied. Datasets were collated from the Environmental Protection Agency (EPA), the Marine Institute (MI) and the Sea Fisheries Protection Authority (SFPA). Where applicable these additional monitoring data were compared with the shellfish water quality parameter mandatory and guideline values outlined in Annex I of the Shellfish Waters Directive (2006/113/EC) and Schedules 2 and 4 of the Quality of Shellfish Waters Regulations (S.I. No. 268 of 2006) (Table 1).

#### **Marine Institute Shellfish Monitoring Programme**

The MI carries out shellfish monitoring at designated shellfish areas. This dedicated shellfish monitoring programme involves analysing for general components, metals and organics in both water and biota samples. The results have been compared with the shellfish mandatory and guideline values outlined in Table 1.

For this shellfish area, 1 biota samples was available from 2008. There were no water samples available. The shellfish guideline value for biota (outlined in Table 1) was breached for arsenic in the sample.

Faecal coliform biota results were also available from the MI from November 2008, February 2009, May 2009 and August 2009. The shellfish guideline value for faecal coliforms in biota outlined in Table 1 was not breached in any of the samples.

#### **EPA Marine Monitoring Programme**

The EPA Marine Monitoring Programme analyses for general components in water samples at a large number of marine sites around Ireland. However, there was no data available from this programme for the designated shellfish area.

#### **WFD Monitoring Programme**

WFD status classifications from the WFD monitoring programme apply at the water body scale and are generally based on several samples/surveys targeting a variety of parameters including biological, physico-chemical, chemical and hydromorphological elements. The monitoring information on which the marine status classifications are based was collected by the EPA, the MI, the National Parks and Wildlife Service (NPWS) and the Central Fisheries Board (CFB) between 2005 and 2008.



The WFD status of the coastal water, within which the shellfish area is situated, is 'high' and therefore satisfactory. However, this was extrapolated from similar water body types (Map 12).

### **Shellfish Flesh Monitoring Programme**

Shellfish flesh classifications (carried out under the European Communities (Live Bivalve Molluscs) (Health Conditions for Production and Placing on the Market) Regulations, 1996 (S.I. No. 147 of 1996), as amended by the European Communities (Live Bivalve Molluscs) (Health Conditions for Production and Placing on the Market) (Amendment) Regulations, 2000 (S.I. No. 390 of 2000)) indicate faecal contamination in shellfish flesh. Sampling is carried out by the Sea Fisheries Protection Authority (SFPA) on at least a monthly basis.

The licensed areas are classified as Class A meaning that shellfish may be collected for direct human consumption and meet the health standards for live bivalve molluscs laid down in the EC Regulation on food safety (Regulation (EC) No 853/2004). Therefore, there is no indication of faecal contamination in the area.

### **Overall Water Quality**

The dedicated shellfish sample available for this shellfish area were found to be non-compliant with shellfish guideline values for arsenic outlined in Annex I of the Shellfish Waters Directive (2006/113/EC) and Schedule 4 of the Quality of Shellfish Waters Regulations (S.I. No. 268 of 2006) (Table 1). Ongoing shellfish monitoring will strengthen the assessment of compliance status at this shellfish area.

The results of the WFD monitoring programme do not indicate any water quality issues in the vicinity of this shellfish area. However, this status classification does not reflect the results from this water body, as it was extrapolated from a similar water body type.

The shellfish flesh classification monitoring does not indicate faecal contamination in this shellfish area.

## 4.0 CHARACTERISATION MAPS

The following series of maps illustrate the general characteristics of the designated shellfish area and its contributing catchment, as well as the marine and land-based pressures that could potentially impact on the shellfish area. The pressures are further divided into point source pressures, diffuse source pressures and morphological pressures.

Some of the point source pressures are symbolised according to whether they are ‘at risk’ or ‘not at risk’. These risk designations were developed during the WFD implementation process. Some of the designations date back to the Article V characterisation process in 2004 and 2005 but many of the risk designations were updated in 2008 to feed into the draft RBMPs. The risk designations are based on a variety of information, for example, waste water treatment plants can be designated as ‘at risk’ because they are serving a larger population than they were designed to cater for or because their discharges are impacting on water quality. Section 5 of this characterisation report provides the detail behind the risk designations for each of the pressures and discusses their likelihood to be impacting on shellfish water quality parameters.

Whilst the risk designations under the WFD provide a useful screening tool for pressures, their relevance in terms of any water quality issues measured in Shellfish Waters has been assessed in further detail to identify key pressures at a particular site. For example the WFD risk may be based on particular impacts to freshwater ecology which are not pertinent to the shellfish water status.

TABLE 3 - List of maps

Map No.	Map Title	Details
<b>General Characteristics Maps</b>		
MAP 1	Designated shellfish area	Designated shellfish area with summary statistics.
MAP 2	Licensed shellfish areas	Department of Agriculture, Fisheries and Food register of licensed shellfish areas within the designated shellfish area.
MAP 3	Contributing catchment	Nested river water bodies and inter-coastal freshwater bodies discharging in the vicinity of the designated shellfish area.
MAP 4	Topography	Topography of the contributing catchment.
MAP 5	Soil wetness	Soil wetness which indicates drainage characteristics
MAP 6	Vulnerability of groundwaters to pathogens from subsoil discharges	Potential risk of pathogens from sub-soils discharges reaching groundwaters. Based on vulnerability, presence of alluvium, mineral content of soils, wetness, aquifer type, subsoil depth and subsoil permeability.

Map No.	Map Title	Details
MAP 7	Vulnerability of groundwaters to phosphorus from subsoil discharges	Potential risk of phosphorus from sub-soils discharges reaching groundwaters. Based on vulnerability, presence of alluvium, mineral content of soils, wetness, aquifer type, subsoil depth and subsoil permeability.
MAP 8	Vulnerability of surface waters to pathogens from subsoil discharges	Potential risk of pathogens from sub-soils discharges reaching surface waters. Based on vulnerability, presence of alluvium, mineral content of soils, wetness, aquifer type, subsoil depth and subsoil permeability.
MAP 9	Vulnerability of surface waters to phosphorus from subsoil discharges	Potential risk of phosphorus from sub-soils discharges reaching surface waters. Based on vulnerability, presence of alluvium, mineral content of soils, wetness, aquifer type, subsoil depth and subsoil permeability.
MAP 10	Likelihood of inadequate percolation in subsoils	Likelihood of inadequate percolation in subsoils. Based on aquifer type, vulnerability and subsoil permeability.
MAP 11	Designated protected areas	SACs, SPAs, freshwater pearl mussel areas, recreational waters, drinking waters, nutrient sensitive areas, water dependant habitats and RAMSAR sites within the contributing catchment.
MAP 12	WFD surface water status	River, lake, transitional and coastal water body status resulting from the WFD monitoring programme.
MAP 13	EPA diffuse risk assessment	Water body based risk to waters from diffuse sources. Based on the percentages of diffuse land cover per water body including peatlands, coniferous forestry, agriculture and urban areas.
<b>Marine Pressures Maps</b>		
<b>Point Source Pressures</b>		
MAP 14	Marine finfish farms	Marine finfish farms in the vicinity of the designated shellfish area. Taken from the Marine Atlas.
<b>Morphology Pressures</b>		
MAP 15	Fishing gear activity	Fishing gear activity in the vicinity of the designated shellfish area. Taken from the Marine Atlas.
MAP 16	Structures	Marine morphology structures such as bridges and causeways

Map No.	Map Title	Details
MAP 17	Physical modifications	Physical modifications such as shoreline reinforcement, embankments, reclaimed land, capital and maintenance dredging, aggregate removal, dumping at sea and heavily modified waters within the designated shellfish area.
<b>Land-based Pressures Maps</b>		
<b>Point Source Pressures</b>		
MAP 18	Municipal waste water systems	Urban waste water treatment plants and combined sewer overflows within the contributing catchment. These are symbolized based on their risk designations.
MAP 19	Agricultural and aquacultural point source pressures	Pig units, and freshwater fish farms within the contributing catchment.
MAP 20	Industrial point source pressures	Industrial IPPCs, Section 4s, water treatment plants, abstractions, mines, quarries, landfills and contaminated sites within the contributing catchment. These are symbolized based on their risk designations.
<b>Diffuse Source Pressures</b>		
MAP 21	On-site waste water systems	On-site waste water treatment plants within the contributing catchment.
MAP 22	Dairy and drystock livestock units	Dairy and drystock livestock units per hectare of farmed land within each DED in the contributing catchment.
MAP 23	Nitrogen fertiliser usage	Nitrogen fertiliser usage per hectare of farmed land within each DED in the contributing catchment.
MAP 24	Phosphorus fertiliser usage	Phosphorus fertiliser usage per hectare of farmed land within each DED in the contributing catchment.
MAP 25	Forestry types with acidification risk areas	Forest cover in the contributing catchment with areas identified as being at risk from acidification.
MAP 26	Forestry types with eutrophication risk areas	Forest cover in the contributing catchment with areas identified as being at risk from eutrophication.
MAP 27	Forestry types with sedimentation risk areas	Forest cover in the contributing catchment with areas identified as being at risk from sedimentation.
<b>Morphology Pressures</b>		

Map No.	Map Title	Details
MAP 28	Structures	Barriers to migration, both natural and man-made in the contributing catchment.
MAP 29	Physical modifications	Channelisation, heavily modified and artificial water bodies in the contributing catchment.

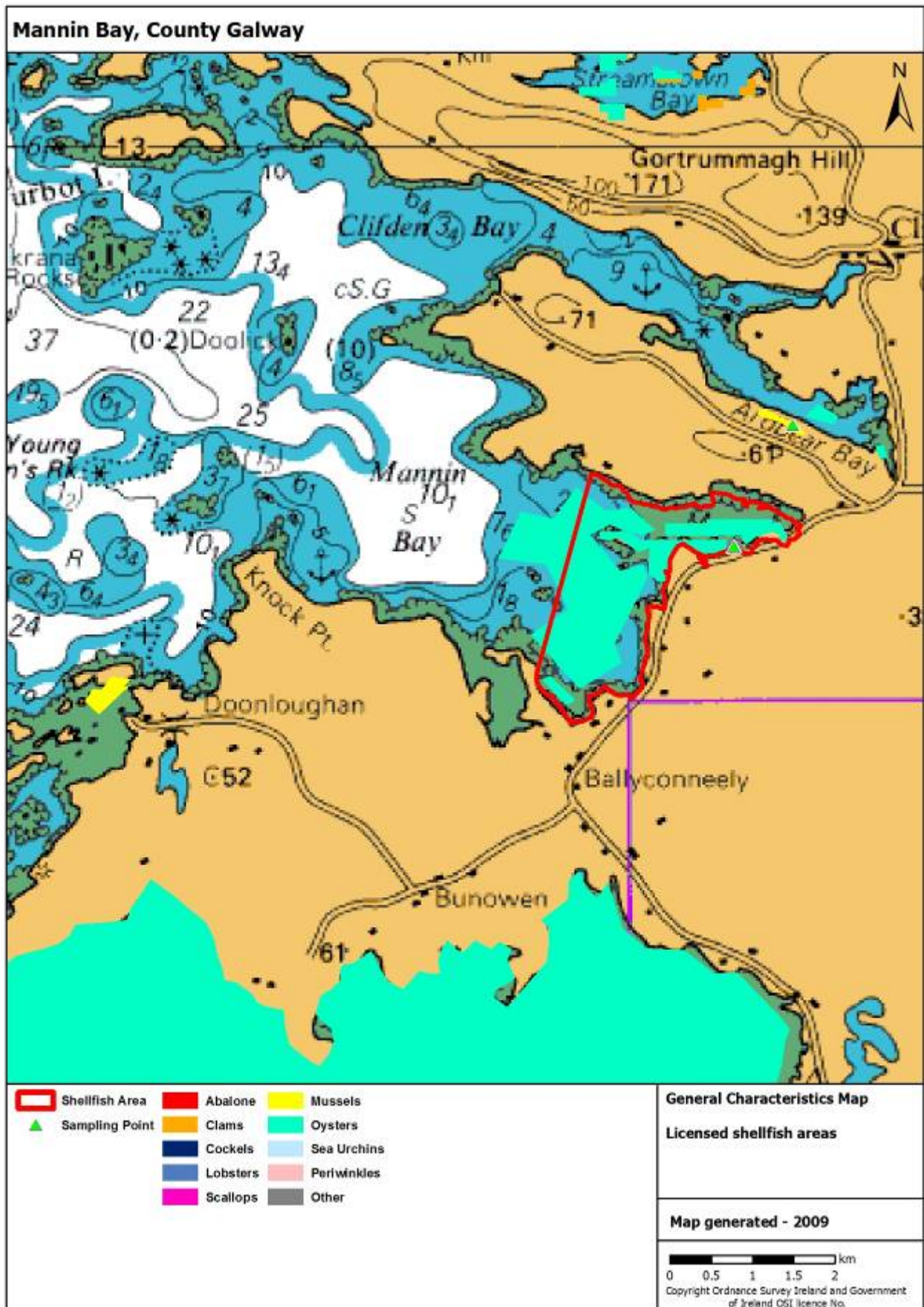


MAP 1 - Designated shellfish area

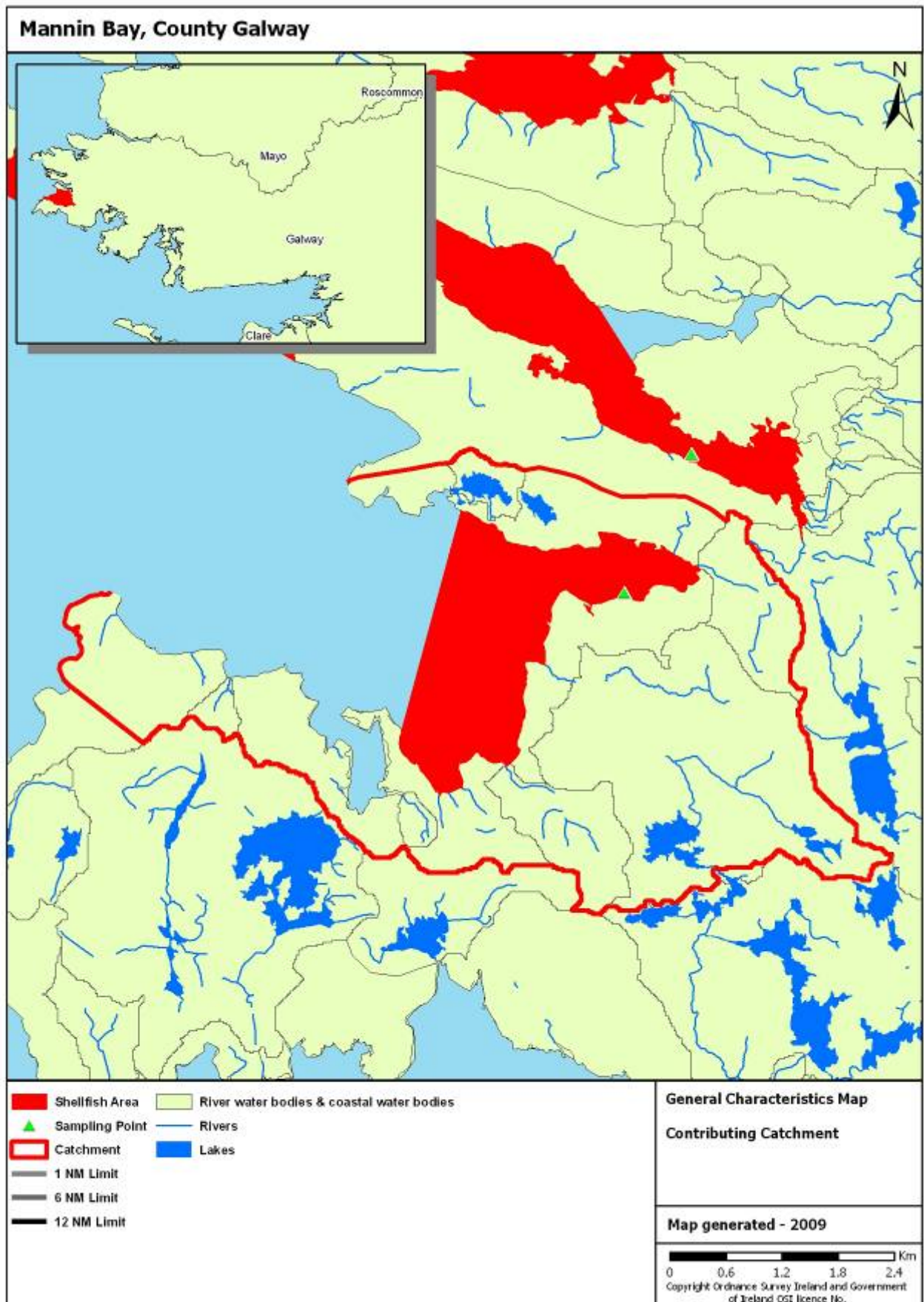




MAP 2 - Licensed shellfish areas

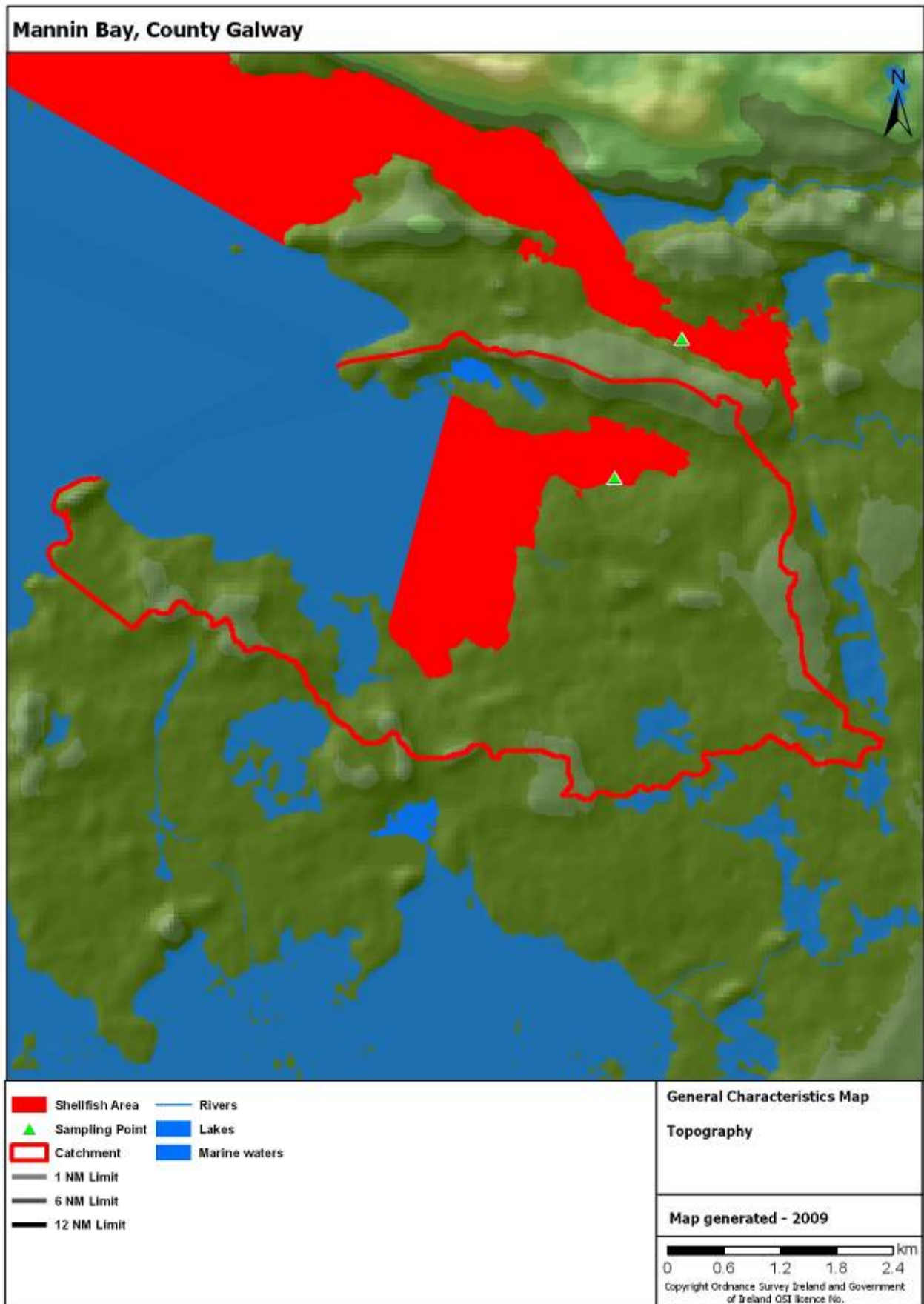


MAP 3 - Contributing catchment

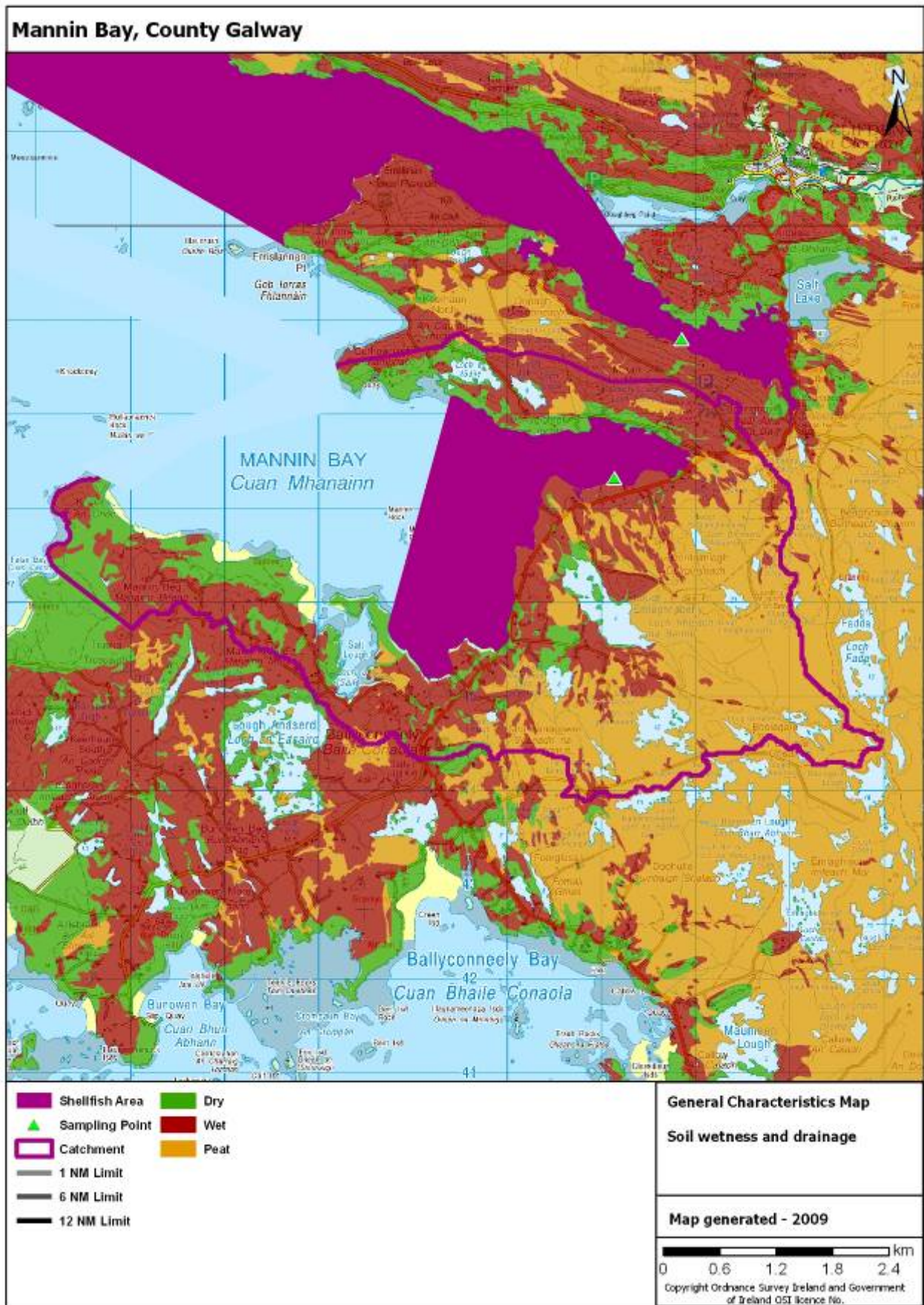




MAP 4 – Topography

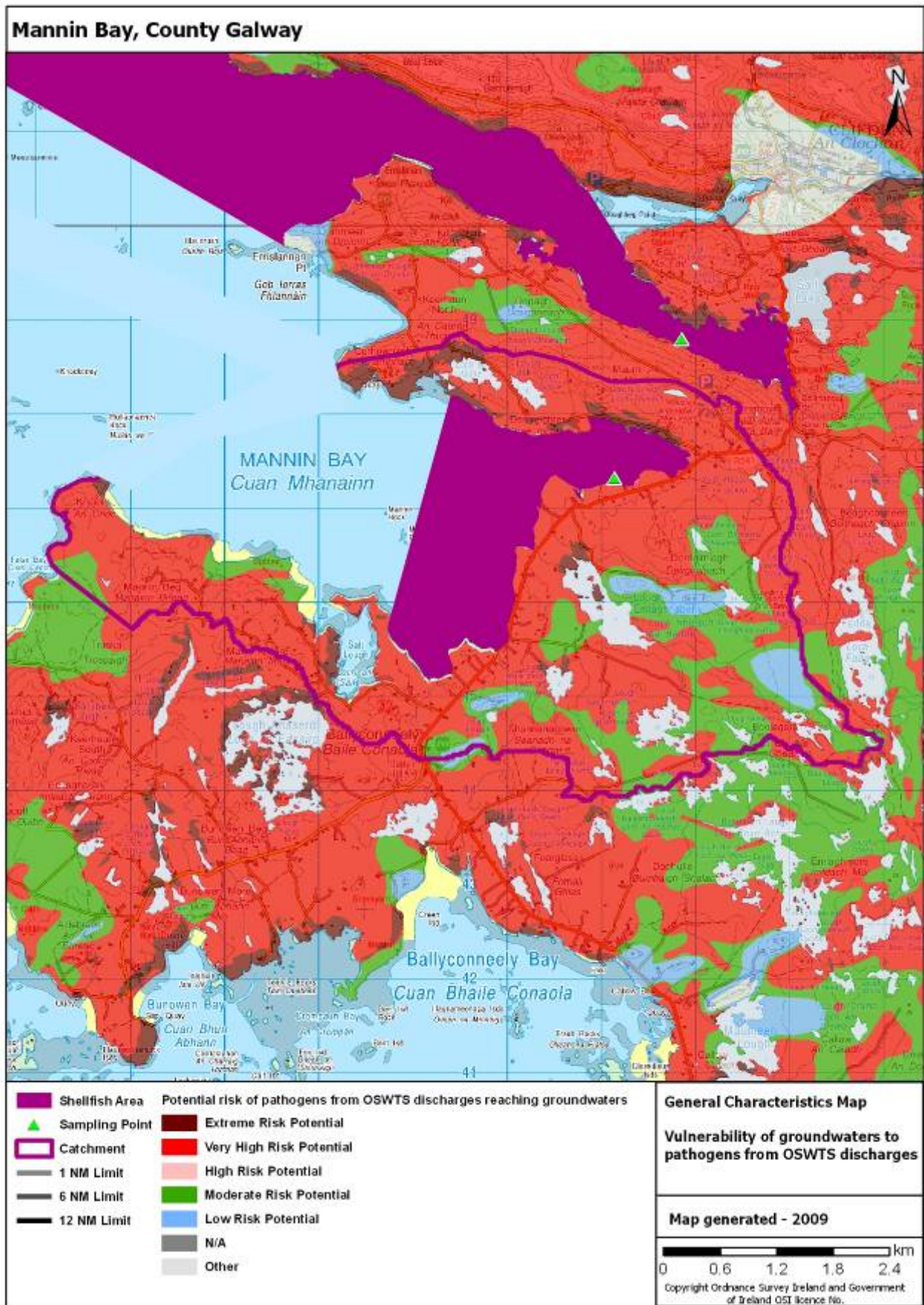


MAP 5 - Soil wetness



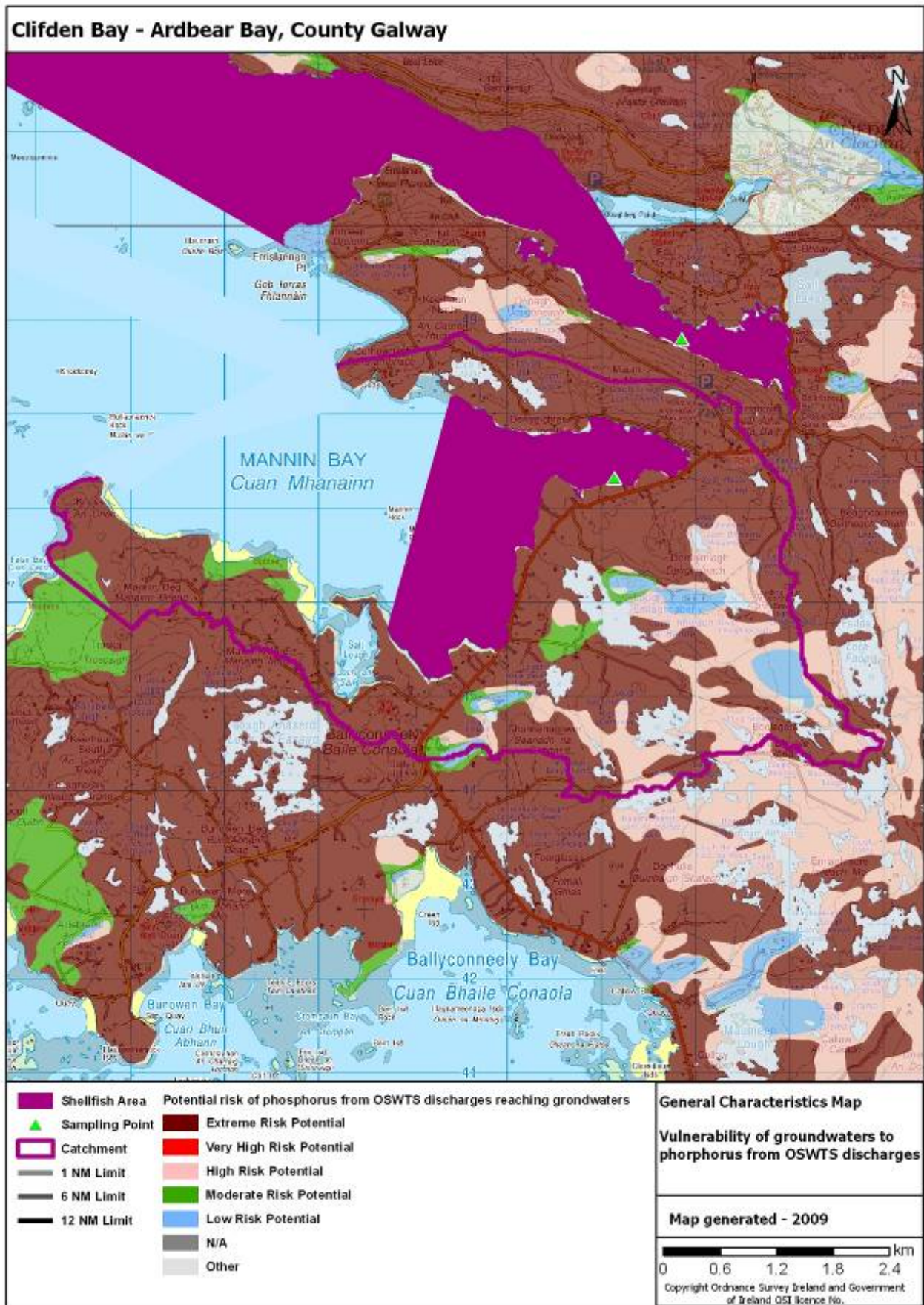


MAP 6 - Vulnerability of groundwater to pathogens from subsoil discharges



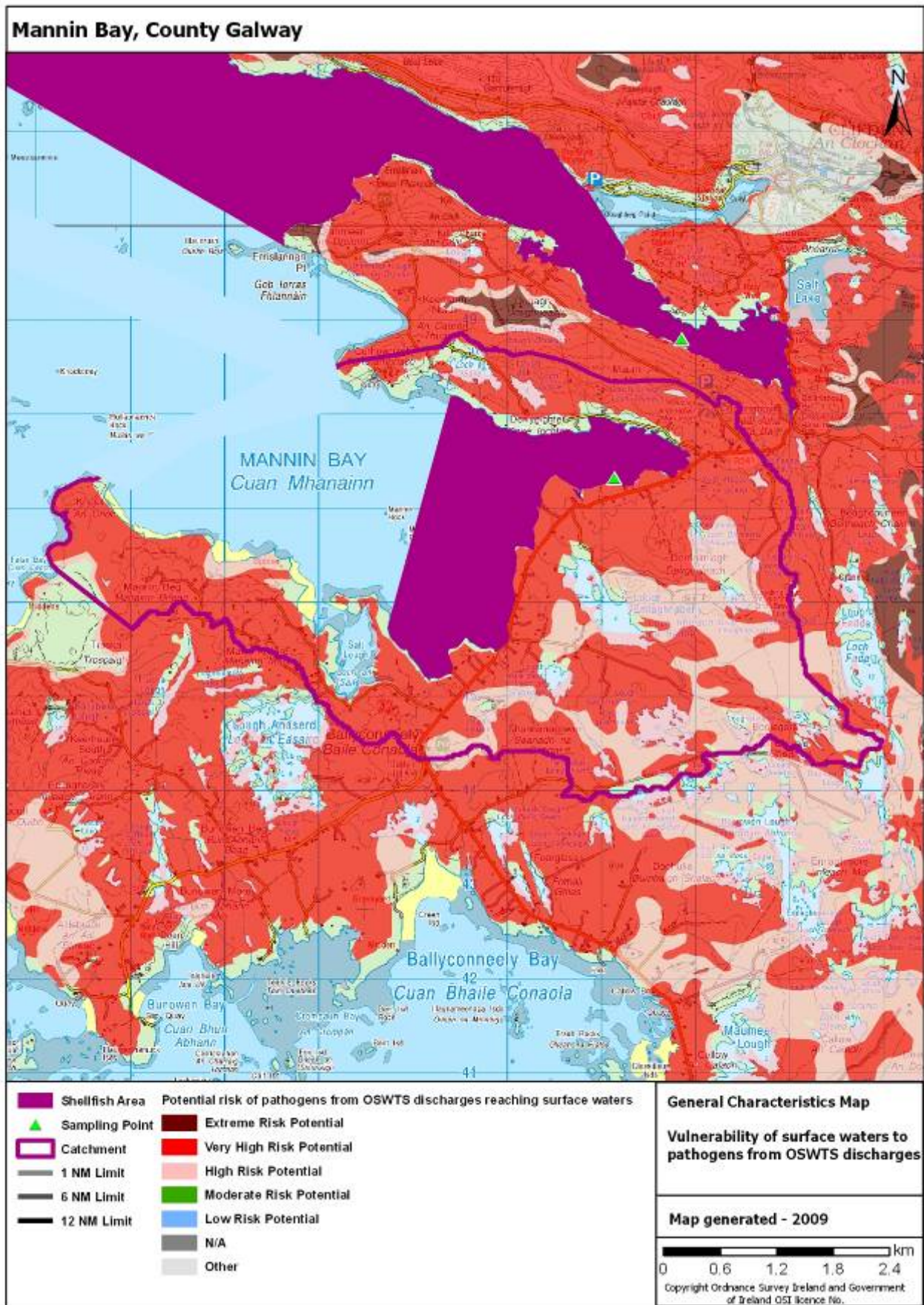


MAP 7 - Vulnerability of groundwater to phosphorus from subsoil discharges



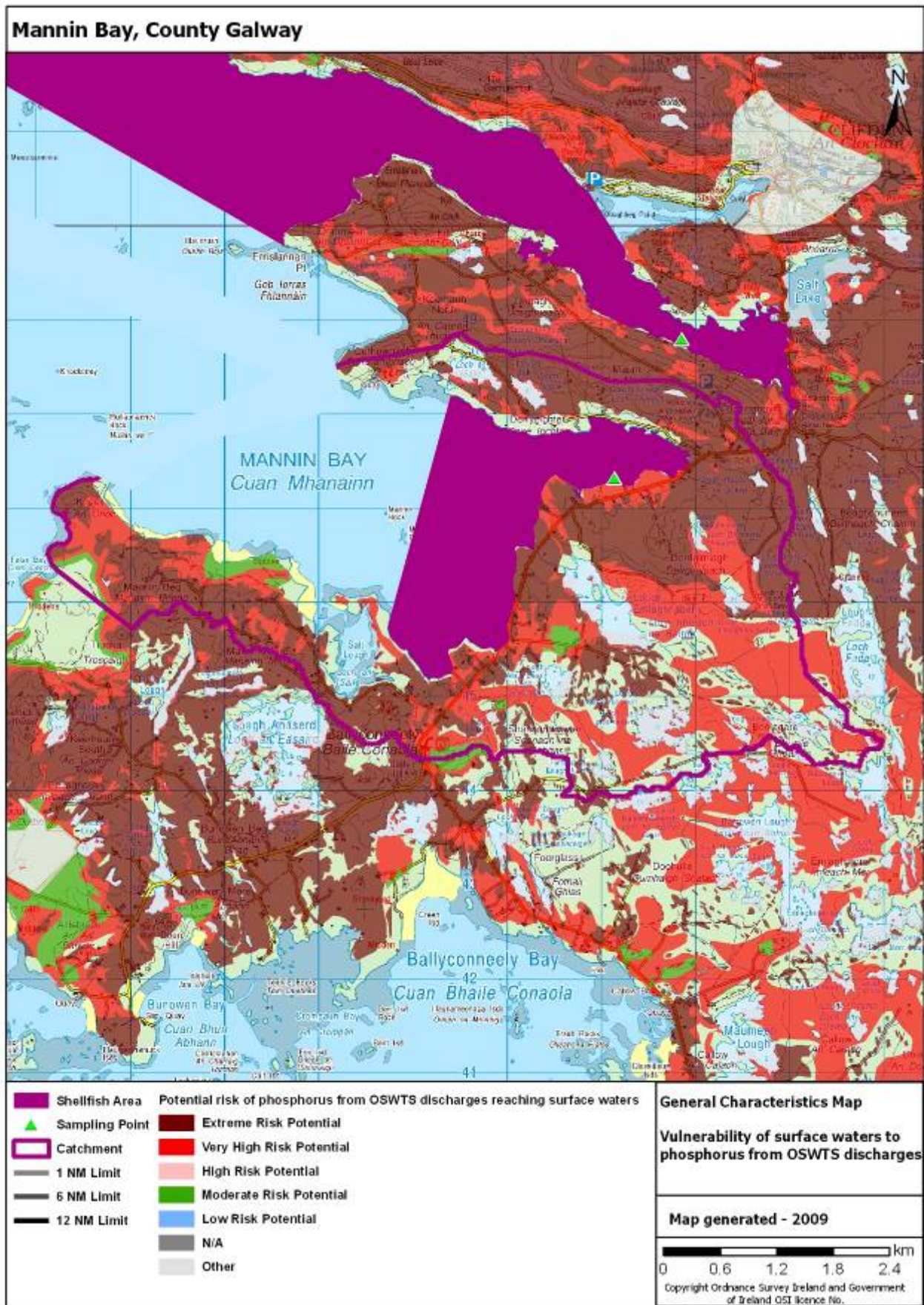


MAP 8 - Vulnerability of surface waters to pathogens from subsoil discharges





MAP 9 - Vulnerability of surface waters to phosphorus from subsoil discharges



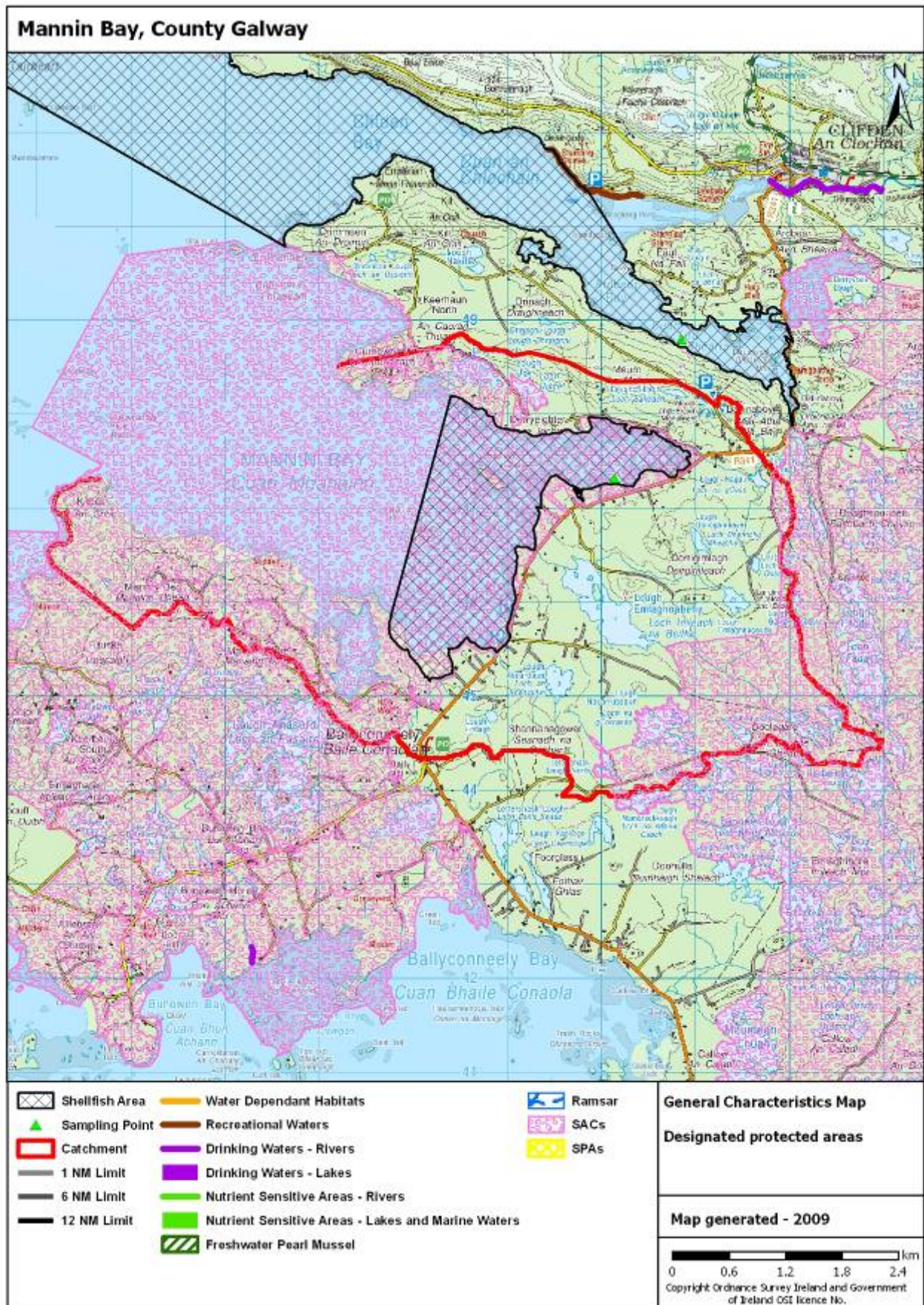


MAP 10 - Likelihood of inadequate percolation in sub-soils



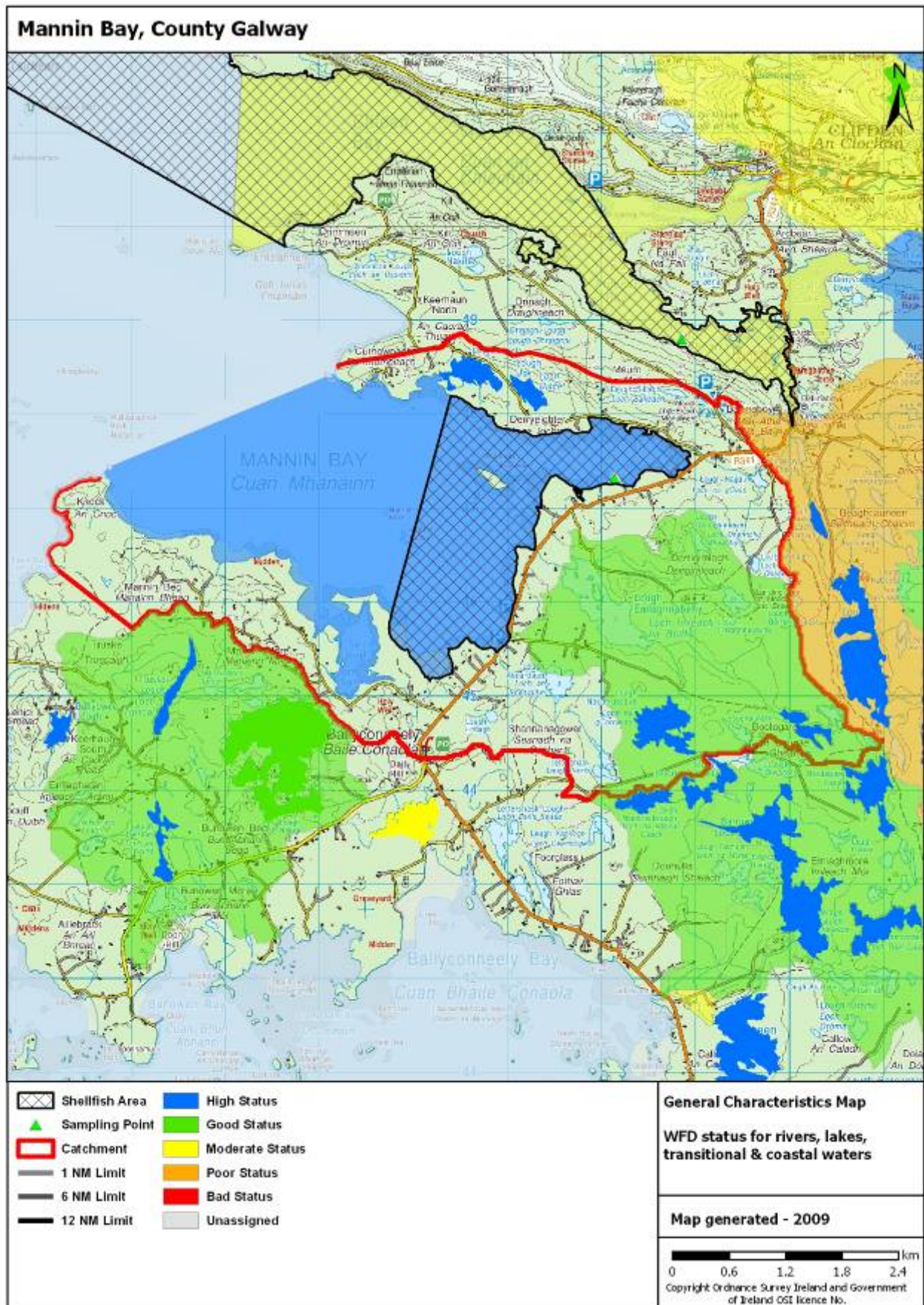


MAP 11 - Designated protected areas



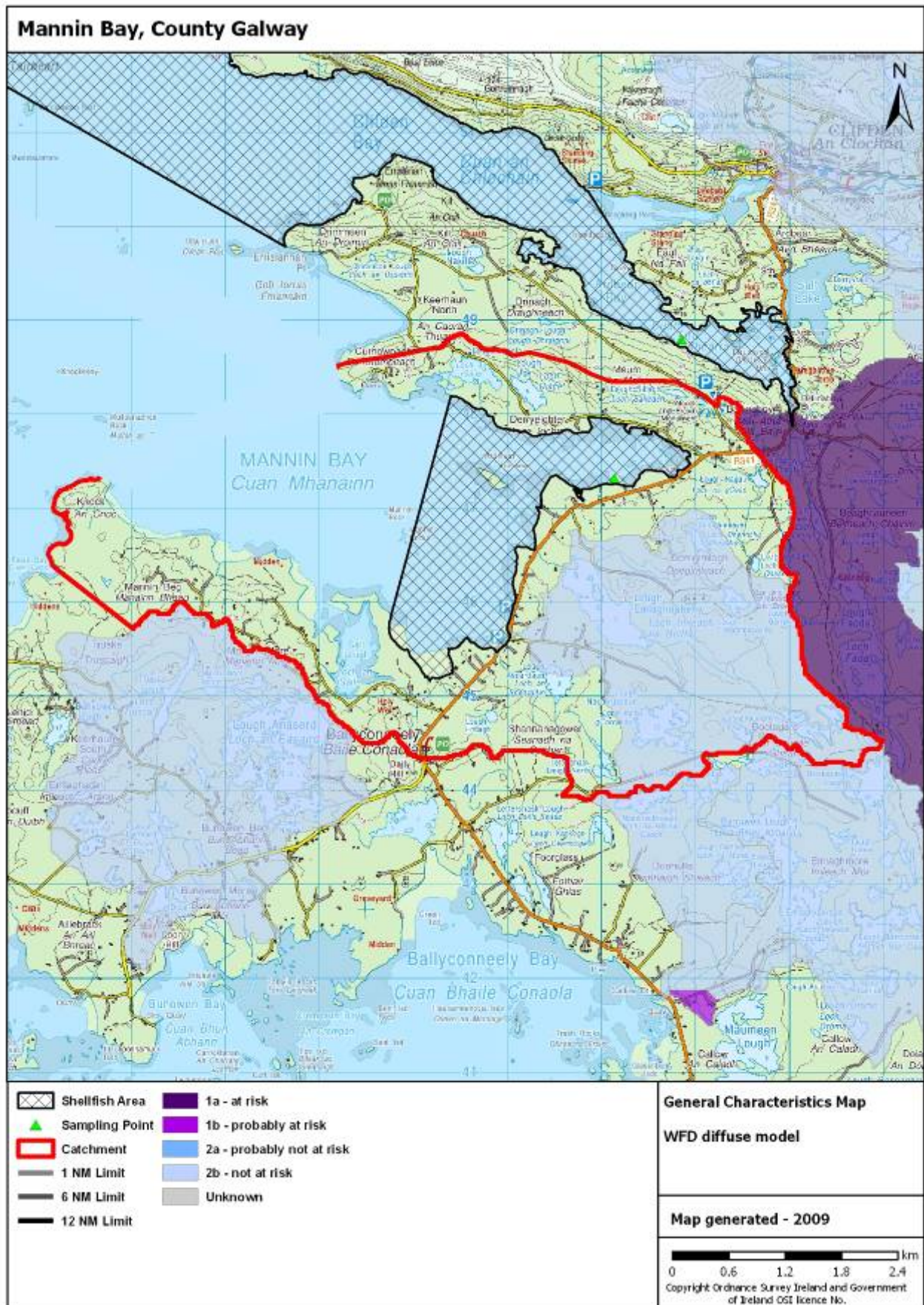


MAP 12 - WFD surface water status





MAP 13 - Diffuse risk assessment

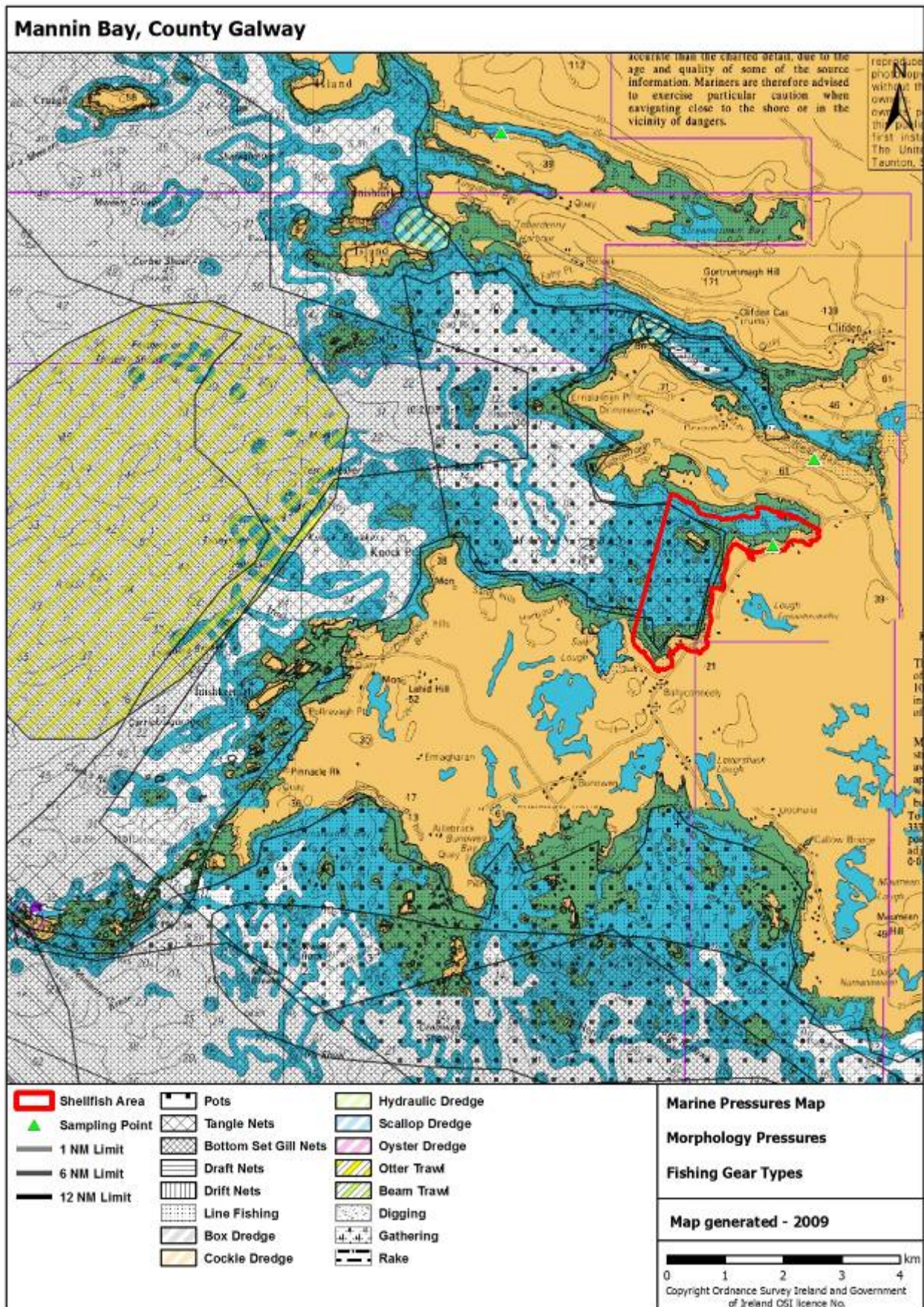






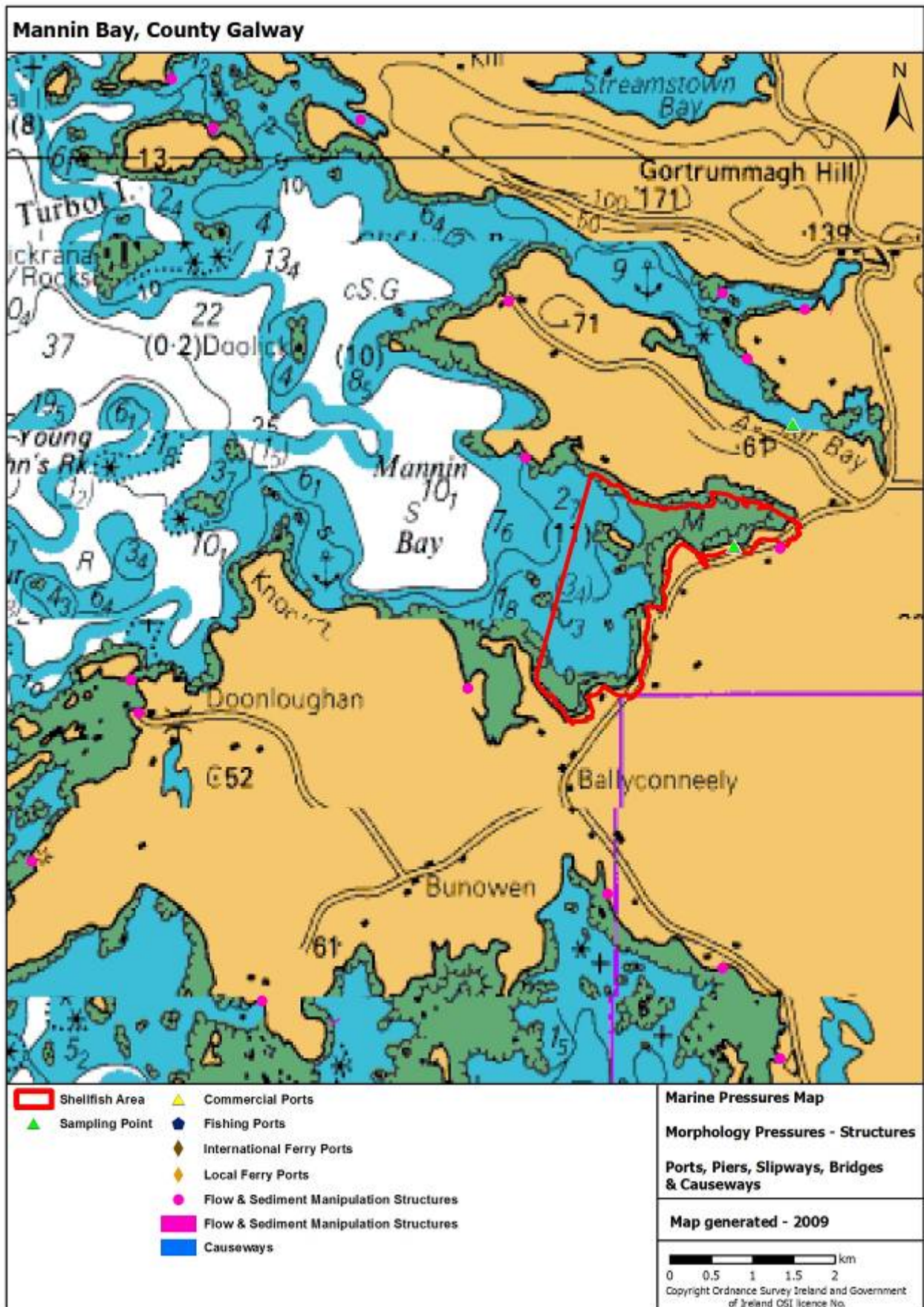


MAP 15 - Fishing gear activity





MAP 16 - Marine structures







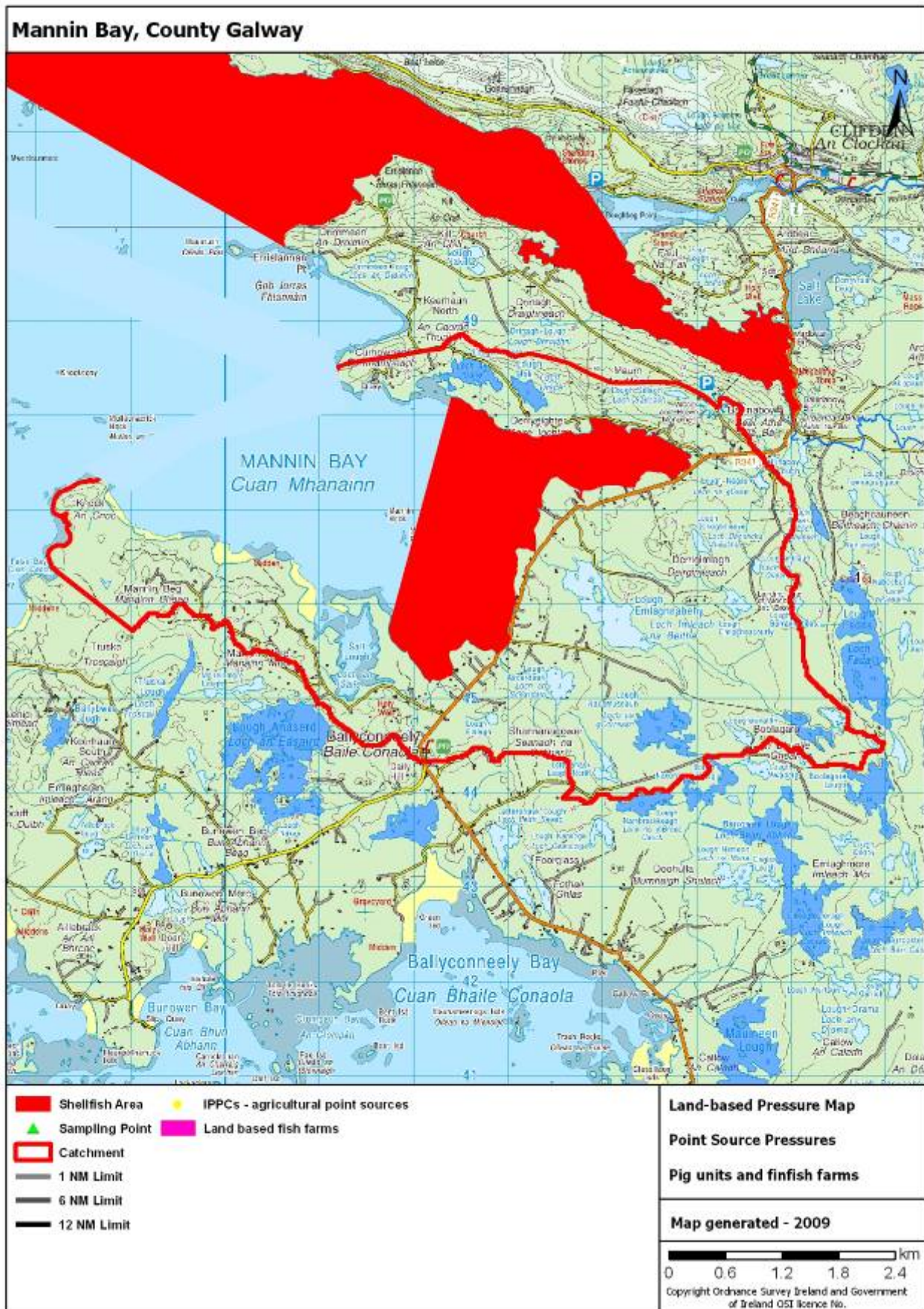


MAP 18 - Municipal waste water systems (None in this catchment)



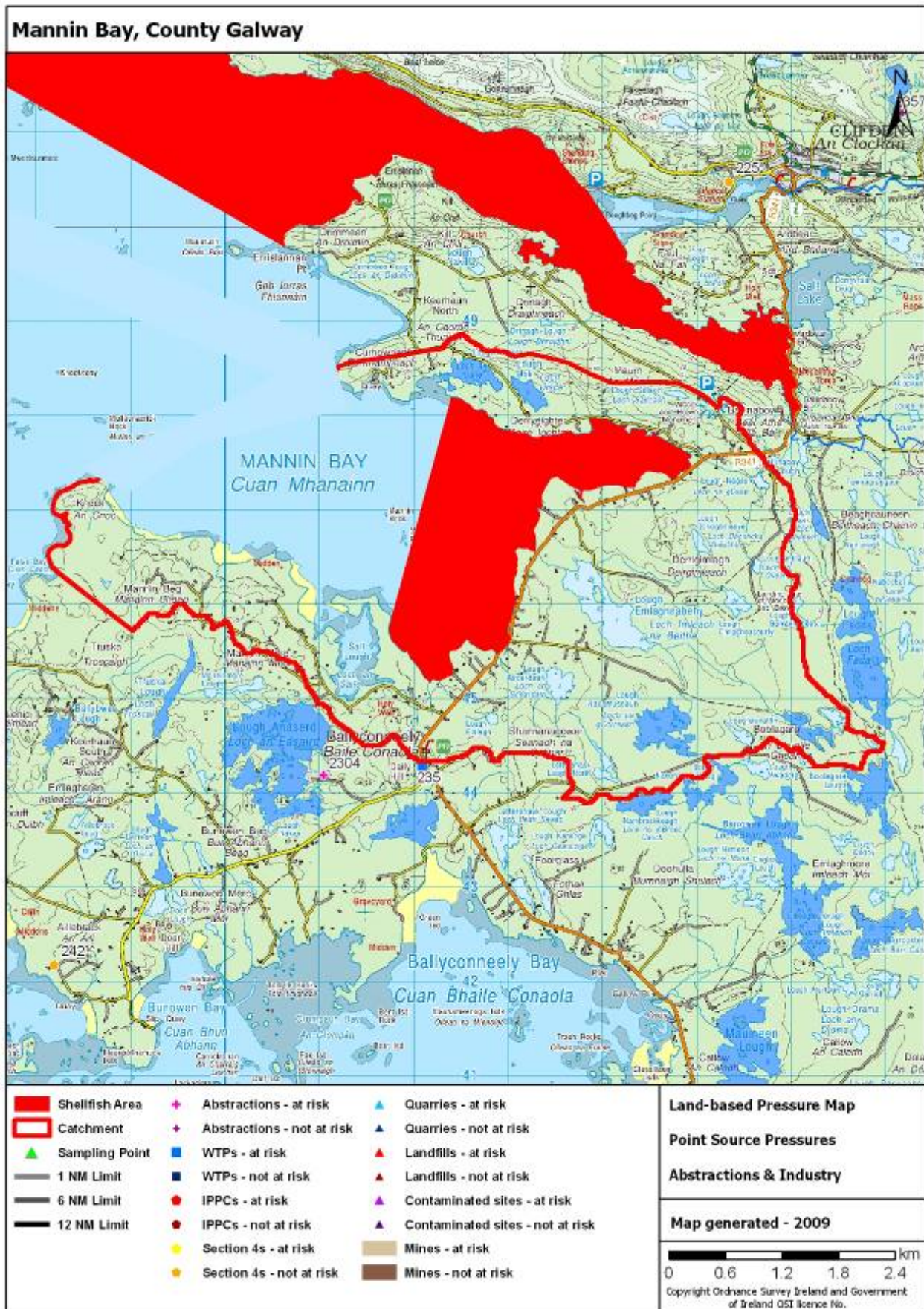


MAP 19 - Pig units and finfish farms (None in this catchment)



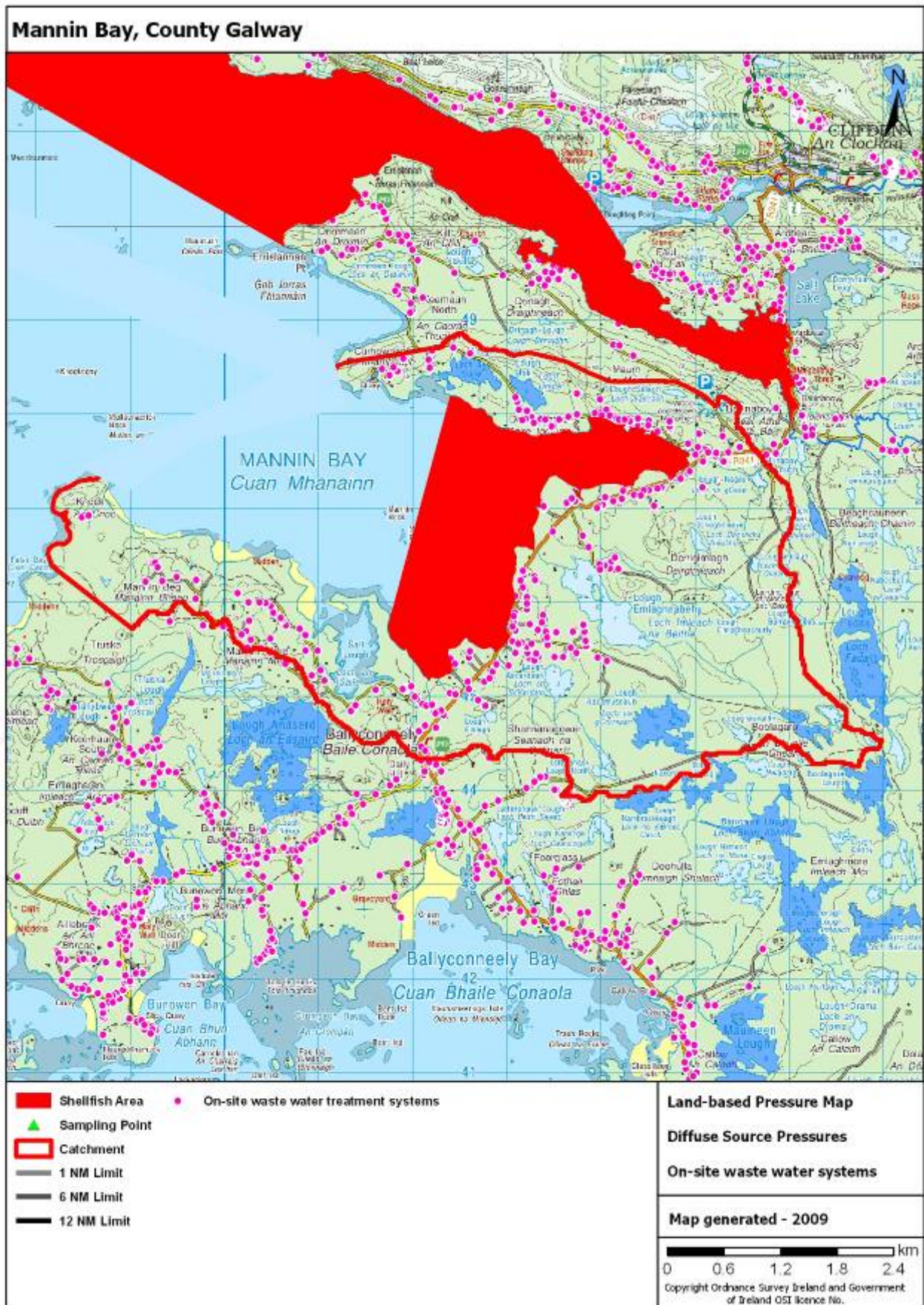


MAP 20 - Industrial point source pressures (None in this catchment)



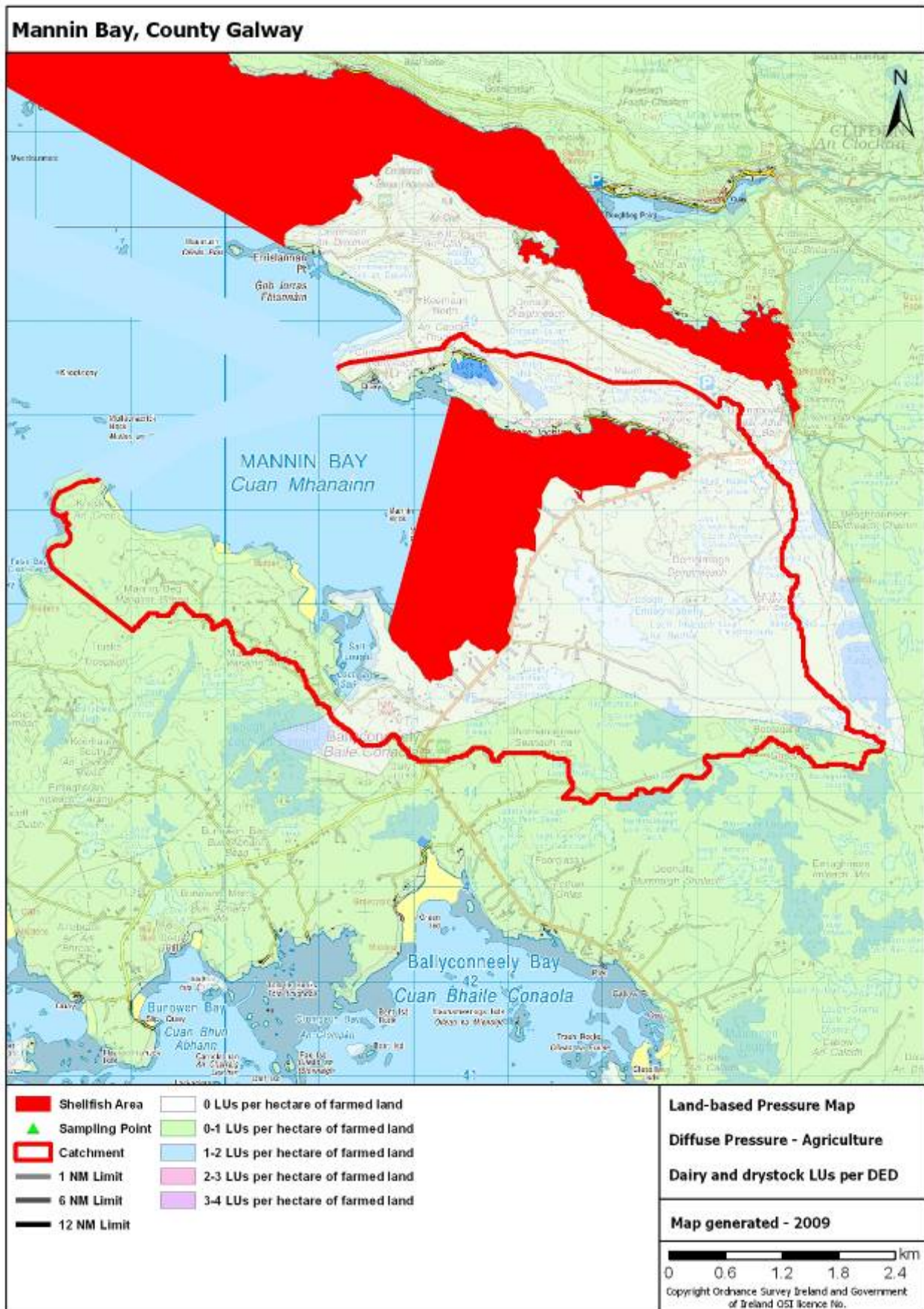


MAP 21 - On-site waste water systems



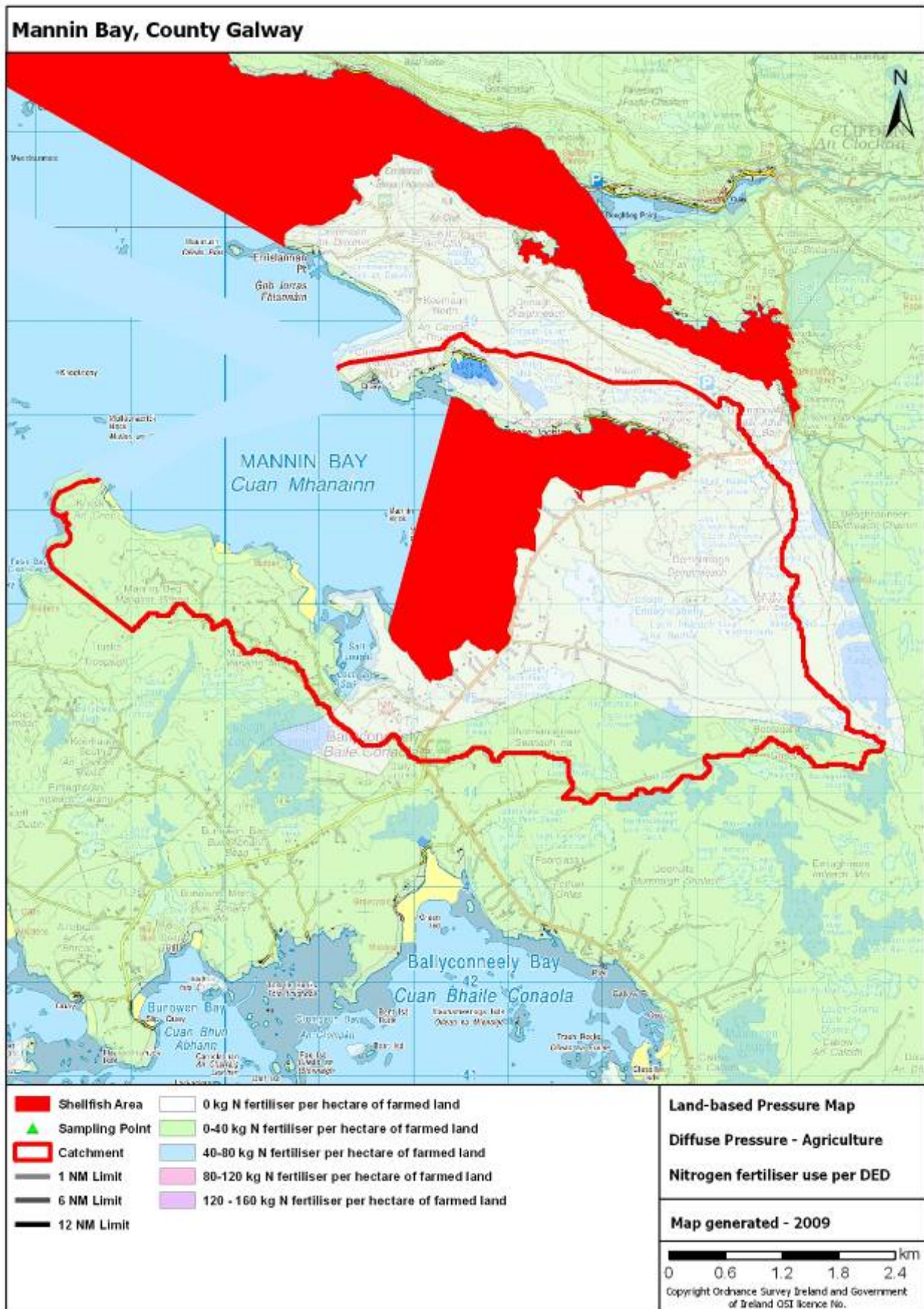


MAP 22 - Dairy and drystock livestock units



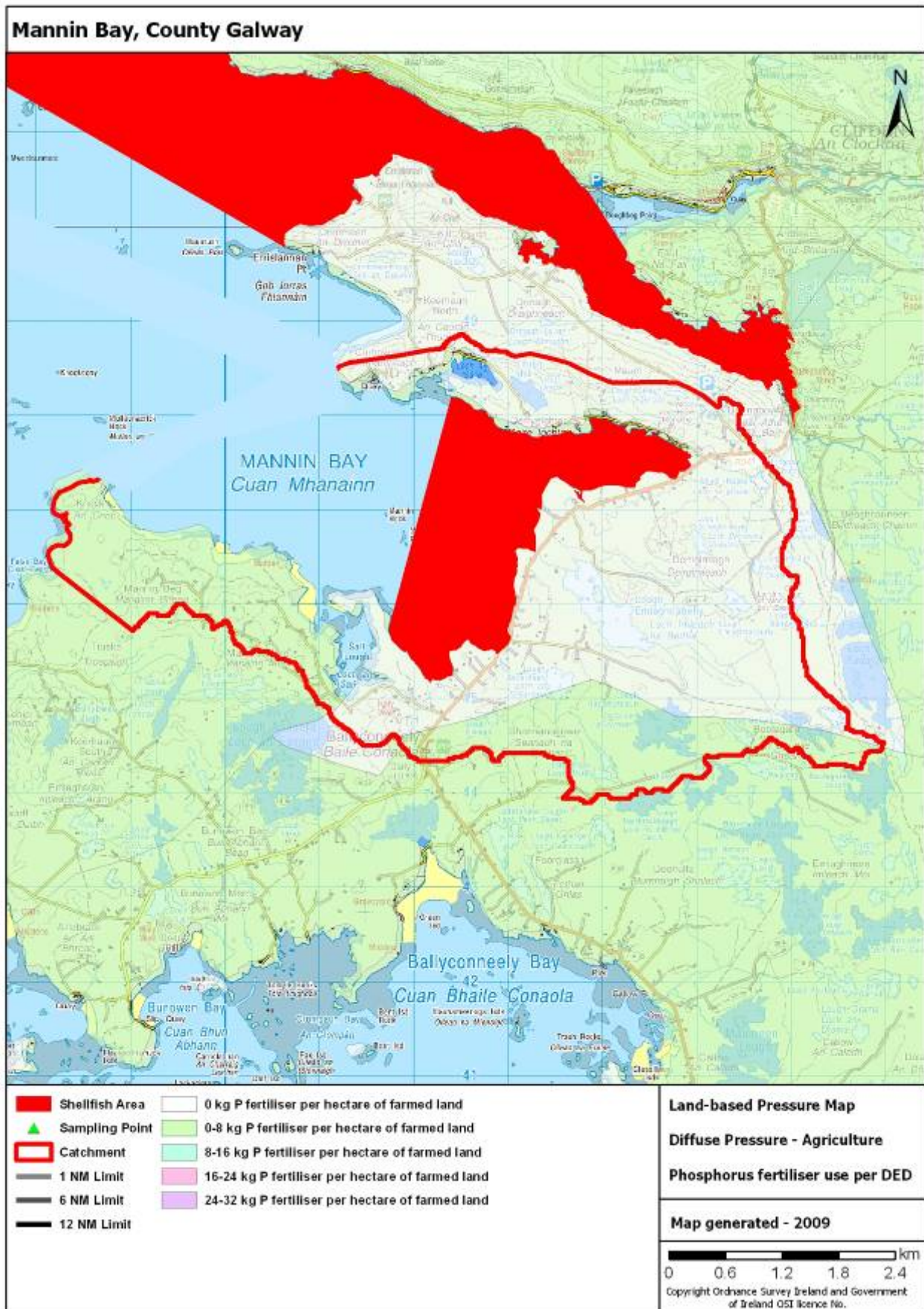


MAP 23 - Nitrogen fertiliser usage



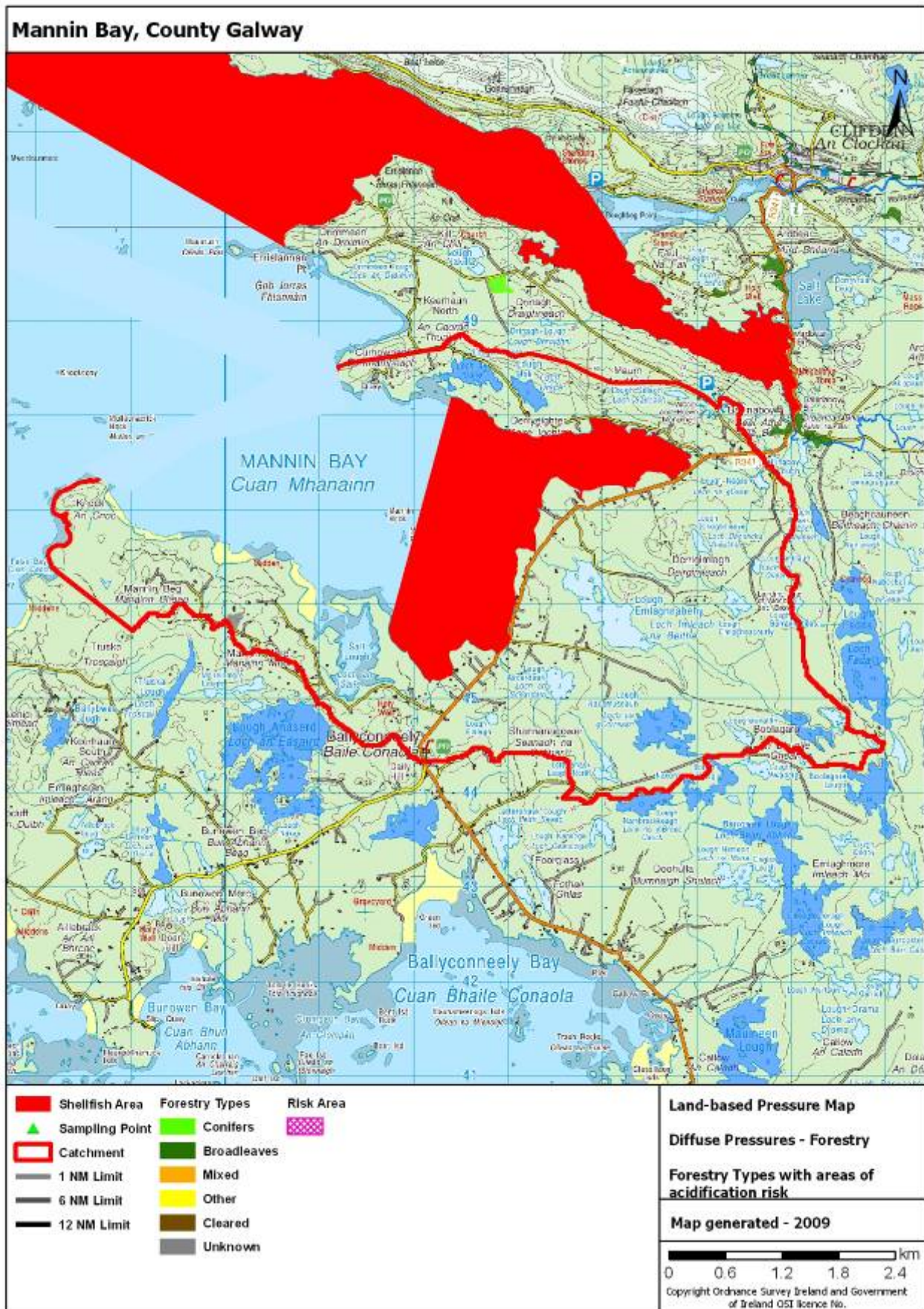


MAP 24 - Phosphorus fertiliser usage



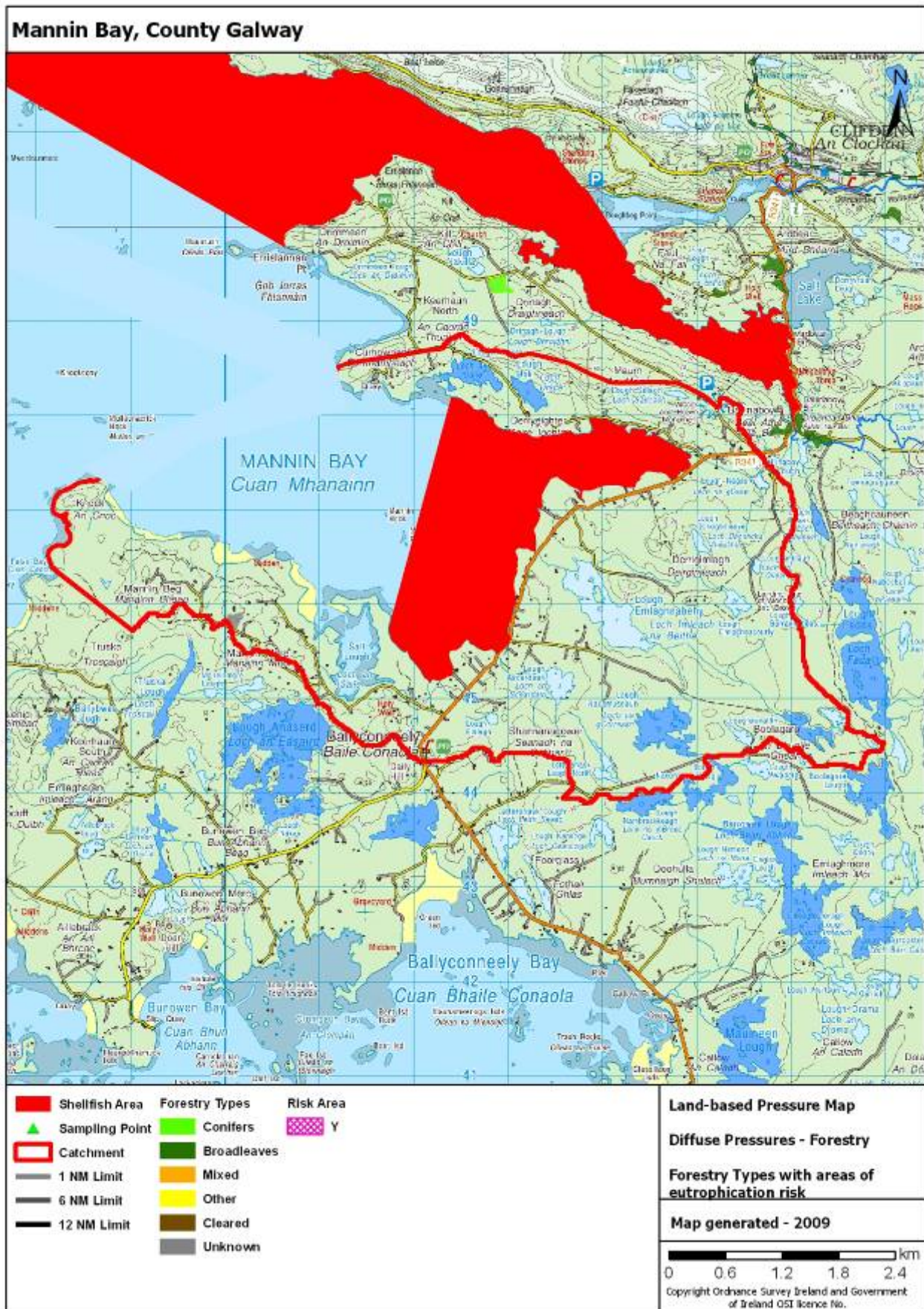


MAP 25 - Forestry types with acidification risk areas



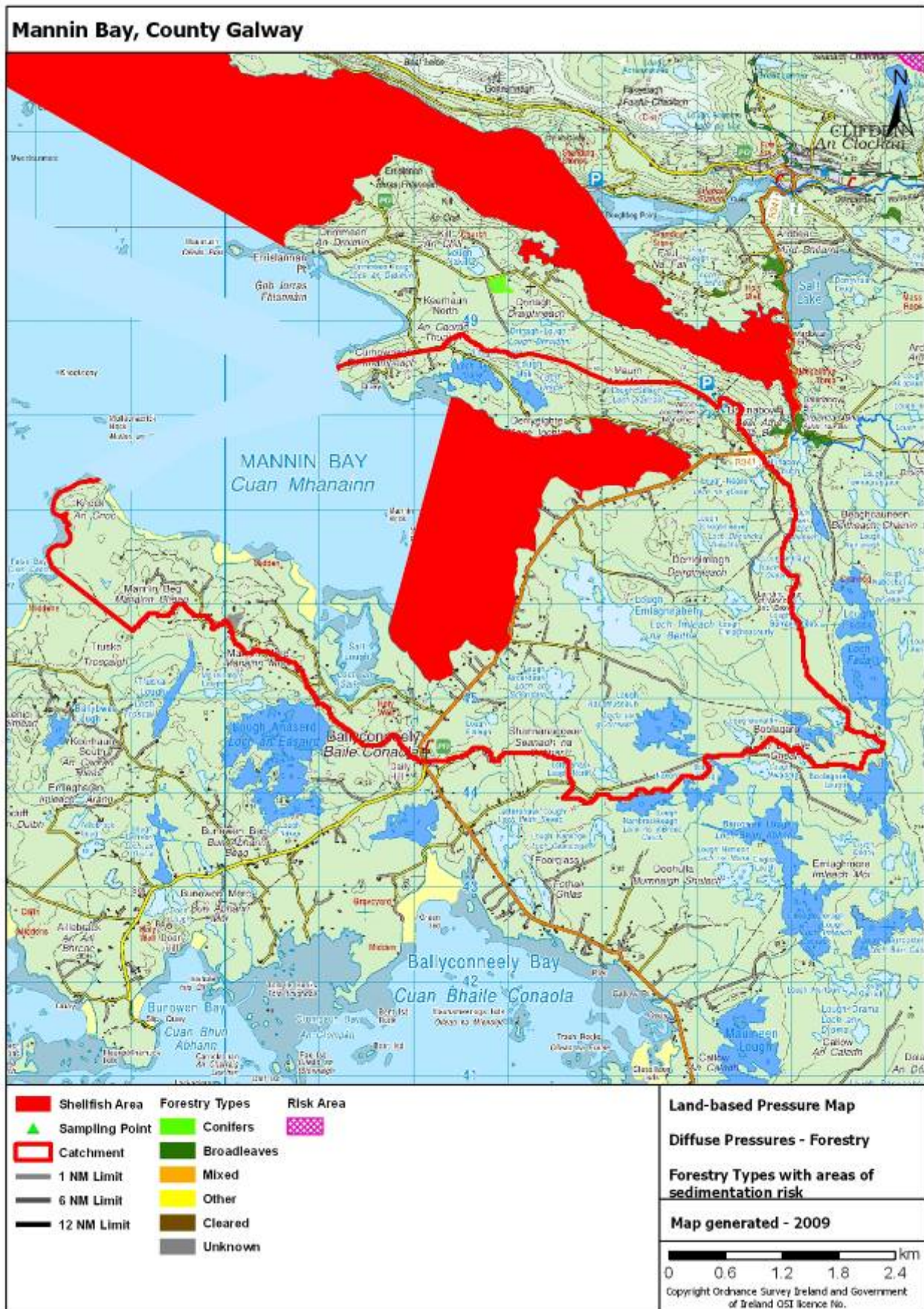


MAP 26 - Forestry types with eutrophication risk areas



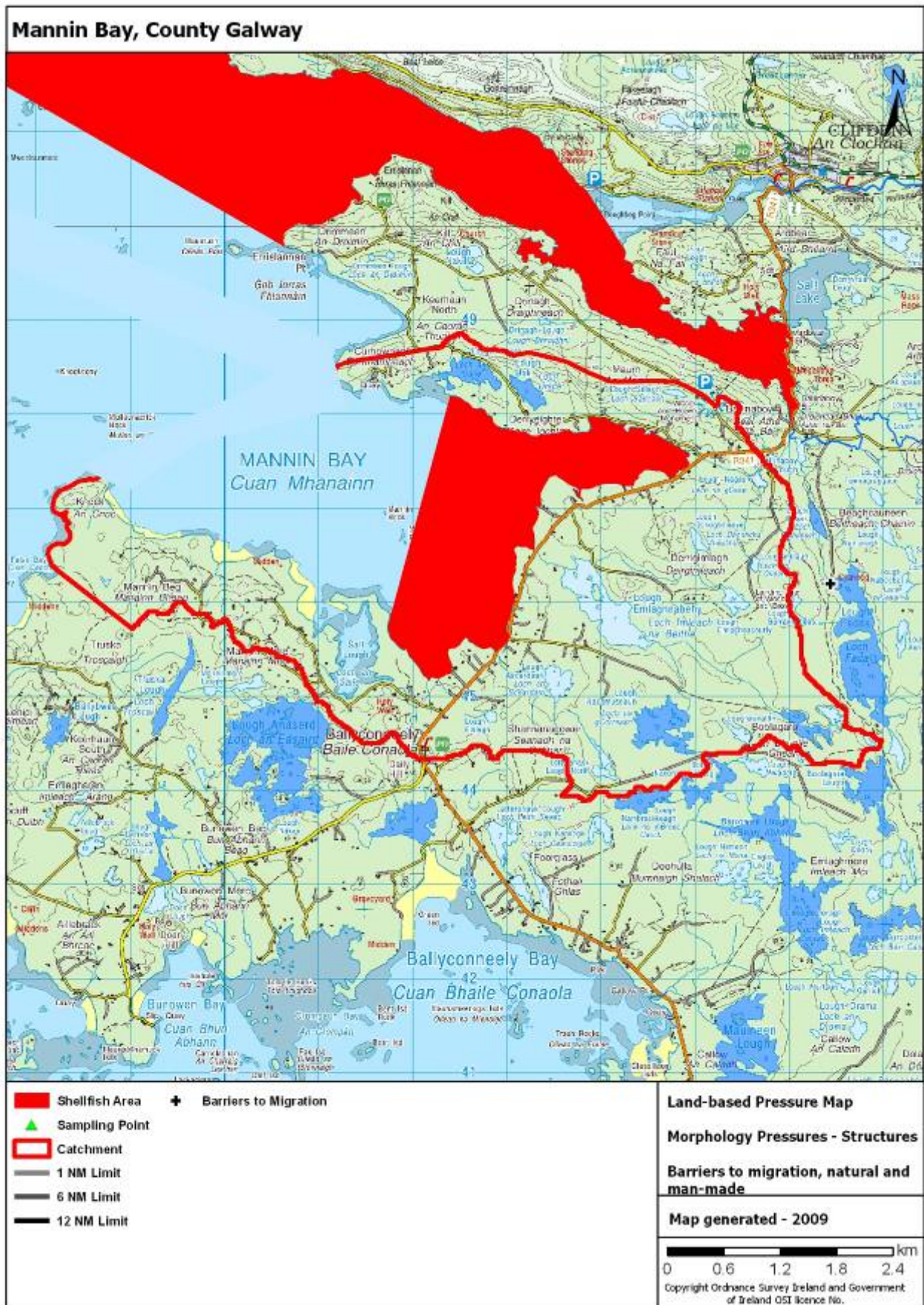


MAP 27 - Forestry types with sedimentation risk areas



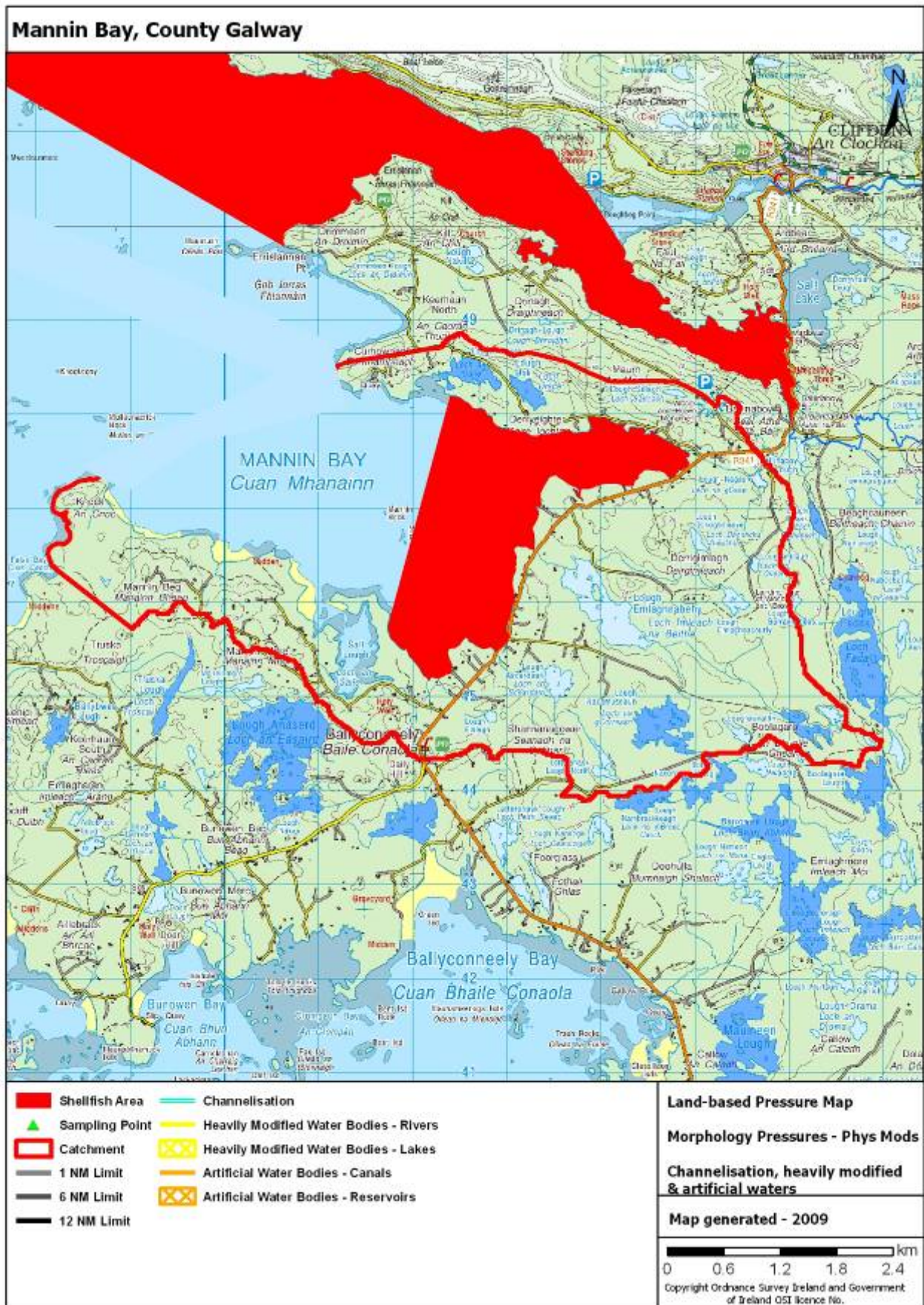


MAP 28 - Freshwater structures





MAP 29 - Freshwater physical modifications



## 5.0 PRESSURES

This section of the characterisation report provides a tabular overview and inventory of the marine and land-based pressures in the vicinity of the designated shellfish area and within the contributing catchment up to a distance of 20 kilometres from the shellfish area. The pressure data has been derived from existing inventories. The pressures considered most likely to be related to any measured impacts on shellfish water quality parameters in this shellfish area have been estimated in order to focus management efforts towards the protection and improvement of the water quality in this shellfish area.

The available information considered when determining the likelihood of the pressures to cause impacts includes:

- pressure type

The pressure types, be it marine or land-based, point, diffuse or morphological, vary in terms of: their likelihood to impact on shellfish water quality; the water quality parameters they are likely to affect; and the severity of the impacts. The results of monitoring can therefore provide an indication of which pressure types are likely to be causing impacts.

- pressure magnitude

The magnitude of the pressures acting on a shellfish area can affect the overall potential impact. For marine pressures, the magnitude depends on the number and scale of the pressures but also on the exposure of the shellfish area to the pressures which in turn depends on how open or sheltered the shellfish area is and on water circulation. For land-based pressures, the magnitude depends on the number and scale of the pressures but also on the remoteness of the pressures from the shellfish areas which in turn depends on the distance of the pressures from the shellfish area, the topography of the catchment and the presence of lakes downstream of pressures which can act as pollution sinks.

- WFD risk designations

A series of risk assessments relating to the main pressures on waters were carried out during the WFD implementation process to identify pressures ‘at risk’ of impacting the surrounding water environment. These were originally carried out in 2004 and 2005 in accordance with Article V of the directive but many of them were subsequently updated in 2008 to feed into draft River Basin Management Plans. A lot of information about the pressures was collected to undertake these assessments and some of that information is summarised in this section where it is useful in screening which pressures are most likely to impact on shellfish water quality. In all cases, the most up-to-date risk assessment information available was used. Full details of the WFD risk assessments can be found at [www.wfdireland.ie](http://www.wfdireland.ie).

Whilst the risk designations under the WFD provide a useful screening tool for pressures, their relevance in terms of any water quality issues measured in Shellfish Waters has to be assessed in further detail to identify key pressures at a particular site.



Table 4 lists all of the pressures considered in the development of the characterisation report and indicates their presence or absence within the shellfish area, within the marine waters in the vicinity of the shellfish area or within the contributing catchment. Those pressures that are present are discussed later in this section.

TABLE 4 - Summary of pressures

Pressure	Pressure type	Pressures	Present	
Marine	Point	Marine finfish farms	No	
		Morphology	<b>Fishing gear activity</b>	<b>Yes</b>
			Structures and associated activities	
			Ports	No
			<b>Flow/Sediment manipulation structures</b>	<b>Yes</b>
			Piled structures	No
			Causeways	No
			Physical modifications	
			<b>Shoreline reinforcement</b>	<b>Yes</b>
			Embankments	No
			Reclaimed Land	No
			Capital dredging	No
			Maintenance dredging	No
			Aggregate removal	No
			Disposal at sea	No
			Marine heavily modified waters	No
Land-based	Point	Municipal waste water systems		
			Urban waste water treatment systems	No
			Combined sewer overflows	No
			Agricultural and aquacultural point sources	
			Pig units	No
			Freshwater finfish farms	No
			Industrial point sources	
			Abstractions	No
			Water treatment plants	No
			IPPCs	No
			Section 4s	No
			Quarries	No
			Landfills	No
		Mines	No	
		Contaminated lands	No	
			Other	No
		Diffuse	<b>On-site waste water treatment systems</b>	<b>Yes</b>
			Agriculture	
			<b>Livestock density</b>	<b>Yes</b>
			<b>Nitrogen fertiliser usage</b>	<b>Yes</b>
		<b>Phosphorus fertiliser usage</b>	<b>Yes</b>	
		<b>Forestry</b>	<b>Yes</b>	
	Morphology	Structures		
			Barriers to migration	No
			Physical Modifications	
			Channelisation	No
			Heavily modified waters	No
		Artificial waters	No	

## 5.1 Marine Pressures

Marine pressures are considered up to a distance of 5 kilometres from the shellfish area. Marine pressures situated further away or in adjacent waterbodies are also mentioned if they are considered significant. Marine pressure types include point source pressures (marine finfish farms) and morphological pressures including fishing gear activity, structures (ports, bridges, piers, slipways etc) and physical modifications (shoreline reinforcement, embankments, dredging etc). The potential impacts associated with these pressures are as follows:

- Point source pressures

Marine finfish farms can be associated with increased nutrient levels in waters, arising from fish excretion and excess feed input.

- Morphological pressures

Fishing activity can be associated with increased suspended sediment levels arising from disturbance of the seabed. The potential severity of the impacts varies depending on the type of fishing gear used and the extent, frequency and duration of the activity. The impact of boats is dealt with in association with marine structures below.

Structures (such as ports, harbours, bridges, slipways and piers) alter natural processes such as flow and silt movement and can therefore affect levels of suspended sediment in marine waters. The activities associated with these structures, for example shipping and boating, are associated with effects on the levels of general physico-chemical parameters, faecal coliforms, metals and chemicals.

Physical modifications (such as shoreline reinforcement, embankments and dredging) can alter natural processes such as flow and silt movement and can therefore affect levels of suspended sediment. However, once these modifications are established or the activities have ceased, the surrounding environment can acclimatise and impacts do not necessarily continue.

The following tables summarise the nature and extent of marine pressures up to a distance of 5 kilometres from the designated shellfish area. The likelihood for these pressures to impact on shellfish water quality parameters is discussed. The potential severity of the impacts of marine pressures is most closely associated with the activity type, magnitude and proximity and therefore the discussions in this section focus on these factors.



### 5.1.1 Point source pressures

There are no marine point source pressures in the vicinity of this shellfish area.

### 5.1.2 Morphology pressures

An assessment of the risk posed to marine waters from marine morphology pressures was carried out during the WFD implementation process. The results of this assessment show that the marine waters in and around this shellfish area are considered to be ‘not at risk’ from morphological pressures.

#### *Fishing gear activity*

TABLE 5 - Fishing gears

Fishing gear types	Type	Present	Comment
Pots	Static	Yes	Widespread throughout the area
Tangle Nets	Static	Yes	Widespread throughout the area
Bottom Set Gill Nets	Static	Yes	Widespread throughout the area
Draft Nets	Static	No	NA
Drift Nets	Static	No	NA
Line Fishing	Static	Yes	Widespread throughout the area
Box Dredge	Mobile	No	NA
Cockle Dredge	Mobile	No	NA
Hydraulic Dredge	Mobile	No	NA
Scallop Dredge	Mobile	No	NA
Oyster Dredge	Mobile	No	NA
Otter Trawl	Mobile	No	NA
Beam Trawl	Mobile	No	NA
Digging	NA	No	NA
Gathering	NA	No	NA
Rake	NA	No	NA

Table 5 provides a summary of the fishing gear activity occurring within 5 kilometres of the designated shellfish area. Map 15 illustrates these pressures. Boat movements are dealt with below in association with marine structures such as ports and piers.

Static fishing gear types generally would not be expected to impact on shellfish water quality. Mobile fishing gears however disturb the seabed and can therefore affect the levels of suspended sediments in marine waters with the severity of the impacts depending on the frequency, intensity and extent of the fishing activity.

Static fishing gear activity in the area includes widespread line fishing (lines set on the seabed with baited hooks at intervals); widespread use of pots (baited traps set on the seabed targeting crustaceans); the use of tangle nets (slackly hung curtains of netting in the water column targeting monkfish, turbot, rays and crawfish). These static fishing gear types are unlikely to affect shellfish water quality in this shellfish area.

TABLE 6 - Marine morphology structures

Marine morphology structures	Direct	0-5km	Comment
Ports	0	0	NA

Marine morphology structures	Direct	0-5km	Comment
Flow and sediment manipulation	1	2	Piers
Piled structures	0	0	NA
Causeways	0	0	NA

Table 6 provides a summary of the marine morphology structures located within 5 kilometres of the designated shellfish area. Map 16 illustrates these pressures. Flow and sediment manipulation structures include piers, breakwaters, groynes, flow deflectors and training walls. Piled structures include bridge and pier supports and wind turbines. Causeways include roads and railway lines. These structures affect flow and sediment movement and can therefore impact on levels of suspended sediments, though these impacts can settle down once the structures are well established in an area. The activities associated with marine structures, including shipping and boating, can affect a wide range of water quality parameters including general physico-chemical parameters such as suspended sediment, dissolved oxygen and nutrient levels. Faecal coliform levels can also be affected as well as the levels of harmful substances such as metals and pesticides. Boat movements can lead to erosion and sedimentation effects as well as pollution from fuels.

There is 1 pier structure directly adjacent to the shellfish area and 2 additional pier structures within 5 kilometres of the shellfish area. Monitoring does not indicate any water quality issues which are likely to be associated with these structures or their associated activities such as fishing and boating and the WFD assessment of the risk posed to marine waters from marine morphology pressures deems the marine waters in and around this shellfish area to be ‘not at risk’. Therefore, it is unlikely that the structures themselves or their associated activities are affecting shellfish water quality in this shellfish area.

### *Physical modifications*

TABLE 7- Physical modifications

Physical modifications	Direct	0-5 km	Comment
Shoreline reinforcement	2	1	Seawall
Embankments	0	0	NA
Reclaimed land	0	0	NA
Capital dredging	0	0	NA
Maintenance dredging	0	0	NA
Aggregate removal	0	0	NA
Dumping at sea	0	0	NA

Table 7 provides a summary of the physical modifications occurring within 5 kilometres of the designated shellfish area. Map 17 illustrates these pressures. These modifications can affect flow and sediment movement though these impacts can cease once the modifications are established.

There is only 2 instance of shoreline reinforcement in the direct vicinity of this shellfish area and 1 instance within 5 kilometres of the shellfish area. Monitoring in the shellfish area does not indicate any water quality issues which are likely to be associated with these modifications and the WFD assessment has deemed the area to be ‘not at risk’ from morphological pressures. Therefore, these modifications are unlikely to be affecting shellfish water quality in this shellfish area.



## 5.2 Land-based Pressures

The contributing catchment is used to identify the land-based pressures that could potentially be impacting on shellfish water quality and therefore the size of the contributing catchment can be important in determining the magnitude of the pressures. Contributing catchment sizes vary considerably; however, pressures are only considered up to a distance of 20 kilometres from the shellfish area and are, where appropriate, divided into four zones: direct, 0 to 5 kilometres, 5 to 10 kilometres and 10 to 20 kilometres. Pressures within the catchment, but further than 20 kilometres from the shellfish area, are also included if they are considered significant. In addition significant land-based pressures acting in adjacent waterbodies which may have an impact due to tidal influences are also considered where relevant.

Land-based pressure types include point source pressures, diffuse source pressures and morphology pressures. The shellfish water quality parameters potentially impacted by these pressures are as follows:

- Point source pressures can affect the whole suite of shellfish water quality parameters. For example, waste water treatment plants, CSOs and agricultural point sources can impact on the levels of faecal coliforms, nutrients, bacteria and other harmful substances in receiving waters while IPPC licensed industries, mines, quarries and landfills can impact on the levels of polluting substances in receiving waters such as petroleum hydrocarbons, organohalogenated substances and metals. Abstractions are included under this heading and can impact on salinity levels, though not to an extent likely to lead to non-compliances with shellfish water salinity standards, as well as reducing the dilution available for polluting discharges.
- Diffuse source pressures affect many of the shellfish water quality parameters. Agricultural activity and on-site waste water treatment systems (OSWTS) can impact on faecal coliform levels as well as general physico-chemical parameters such as the levels of suspended sediments and dissolved oxygen. Forestry activity can impact on the pH of receiving waters as well as on the levels of suspended solids and nutrients and it is also associated with the use of pesticides which can contain organohalogenated substances.
- Land-based morphology pressures, and associated activities, are not generally associated with impacts on water quality in marine areas. Their impacts are usually associated with the loss of natural freshwater features and habitats and changes to the behaviour of freshwater systems including sediment movement. Channelisation activities however, if occurring close to shellfish areas, can impact on shellfish water quality, particularly the levels of suspended sediment.

The following tables summarise the nature and extent of land based pressures within the catchment up to a distance of 20 kilometres from the designated shellfish area. The likelihood for these pressures to impact on shellfish water quality parameters is discussed. All of the factors discussed at the beginning of this chapter can affect the likelihood for land-based pressures to impact on shellfish waters.

### **5.2.1 Point Source Pressures**

There are no land based point source pressures in this catchment.



## 5.2.2 Diffuse Source Pressures

### *On-site waste water treatment systems*

TABLE 8 - On-site waste water treatment systems

Risk	Number	% of total
Total number	234	-
Number per km <sup>2</sup> in the catchment	14.03	-
Number per km <sup>2</sup> nationally	1.4	-
Number that are high risk to surface waters from pathogens	198	89.22%
Number that are high risk to groundwaters from pathogens	219	93.58%
Number that are high risk to surface waters from phosphorus	194	82.90%
Number that are high risk to groundwaters from phosphorus	220	94.01%
High likelihood of inadequate percolation of leachate	195	83.33%

Table 15 summarises the numbers of on-site waste water treatment systems (OSWWTS) within the catchment up to a distance of 20 kilometres from the designated shellfish area and outlines how many of them are located in areas of high risk to surface and groundwaters from pathogens and phosphorus and how many of them are located in areas where the likelihood of inadequate percolation of leachate is high. Map 21 illustrates the locations of the OSWWTSs while Maps 6 to 10 illustrate the risk to surface and groundwaters and the likelihood of inadequate percolation, all of which is based on soil, sub-soil and geological characteristics. Generally, systems located in areas where effluent cannot get away underground pose a risk to surface waters while systems located in areas where the effluent moves too quickly through the subsoil pose a risk to groundwaters. OSWWTS effluent can impact on the levels of faecal coliforms, suspended sediments, nutrients and dissolved oxygen in receiving waters. In addition, the use of household cleaning products can introduce a range of harmful chemicals to the water environment.

There are 234 systems in the contributing catchment and their density is higher than the national average. The risk to surface waters and groundwaters from pathogens and phosphorus is very high throughout the catchment as is the likelihood of inadequate percolation. The majority of the systems are therefore located in hydrologically unsuitable conditions. Many of them are located in the coastal region of the catchment in the direct vicinity of the shellfish area. Other factors which affect the likelihood of these systems to impact surface and groundwaters are whether suitable types of systems are selected, whether they are installed correctly, whether they are properly maintained and whether they are situated close to ditches, drains, watercourses, wells or boreholes. Monitoring does not indicate any water quality issue which are likely to be associated with these systems and therefore they are unlikely to be affecting shellfish water quality in this shellfish area.

### *Agriculture*

TABLE 9 - Livestock units and chemical fertiliser usage

Indicator	Catchment (per ha of farmed land)	National Average (per ha of farmed land)
Livestock units	0.5 LU	1.20 LU
Nitrogen fertiliser usage	39.06 kg	92.09 kg
Phosphorus fertiliser usage	5.79 kg	9.74

Nitrates Directive limit = 170 kg N per hectare = approx. 2 LU per hectare  
 Nitrates Directive derogation = 250 kg N per hectare = approx. 3 LU per hectare.

Table 9 provides an estimate of the average number of dairy and drystock livestock units and the average loadings of nitrogen and phosphorus chemical fertiliser per hectare of farmed land within the contributing catchment area. Maps 22, 23 and 24 illustrate this. The figures beneath the table express the nitrate limit (and Ireland's derogation) under the Nitrates Directive in terms of livestock densities. Discharges related to agriculture can affect the levels of faecal coliforms, suspended sediments, nutrients and dissolved oxygen in receiving waters. In addition, the use of pesticides and herbicides can introduce a range of harmful chemicals to the water environment.

The estimates of livestock density and nitrogen fertiliser usage are much lower than the national averages. The EPA's diffuse model risk assessment, which investigates the relationship between catchment attributes (percentages of diffuse land cover including agriculture), water chemistry and ecological status, does not highlight any diffuse risk areas in the catchment (Map 13). However, the prevalence of peat and other wet soils (Map 5) in the catchment could result in agricultural runoff. Monitoring in the shellfish area does not indicate any water quality issues which are likely to be associated with agriculture and therefore agriculture is unlikely to be affecting shellfish water quality in this shellfish area.

### **Forestry**

TABLE 10 - Forestry types

Type	Area	Percentage of area
Conifers	0 km <sup>2</sup>	0 %
Broadleaves	0 km <sup>2</sup>	0 %
Mixed	0 km <sup>2</sup>	0 %
Other	0 km <sup>2</sup>	0 %
Cleared	0 km <sup>2</sup>	0 %
Unknown	0.02 km <sup>2</sup>	0.08 %
Total	0.02 km <sup>2</sup>	0.08 %
Nationally	6,795 km <sup>2</sup>	10.0 %

Table 10 presents the area and percentage area of the catchment under the various types of forest cover. Maps 25, 26 and 27 illustrate this. Forestry activity can impact on the pH of receiving waters as well as on the levels of suspended solids and nutrients. It is also associated with the use of pesticides which can introduce harmful chemicals to the water environment.

There is very little forest cover in this catchment and therefore it is unlikely to be affecting shellfish water quality in this shellfish area.



### **5.2.3 Morphology Pressures**

There are no freshwater morphology pressures within the catchment.

## **5.3 Summary of Key Pressures**

Information from existing data sources has been used to identify all of the pressures acting on the shellfish area and to assess their likelihood to be affecting shellfish water quality in this shellfish area.

Monitoring within and in the vicinity of this shellfish indicates slightly elevated levels of arsenic in one sample.

This summary section highlights:

- **key pressures**

The key pressures are those identified as most likely to be affecting shellfish water quality. The final PRP will confirm and focus on these key pressures.

- **potential secondary pressures**

These pressures are identified as possibly affecting shellfish water quality. The final PRP will either confirm them as key pressures or eliminate them from further consideration.

### **5.3.1 Key Pressures**

None of the pressures in this catchment are considered likely to be affecting shellfish water quality.

### **5.3.2 Potential Secondary Pressures**

None of the pressures in this catchment are considered to be possibly affecting shellfish water quality.