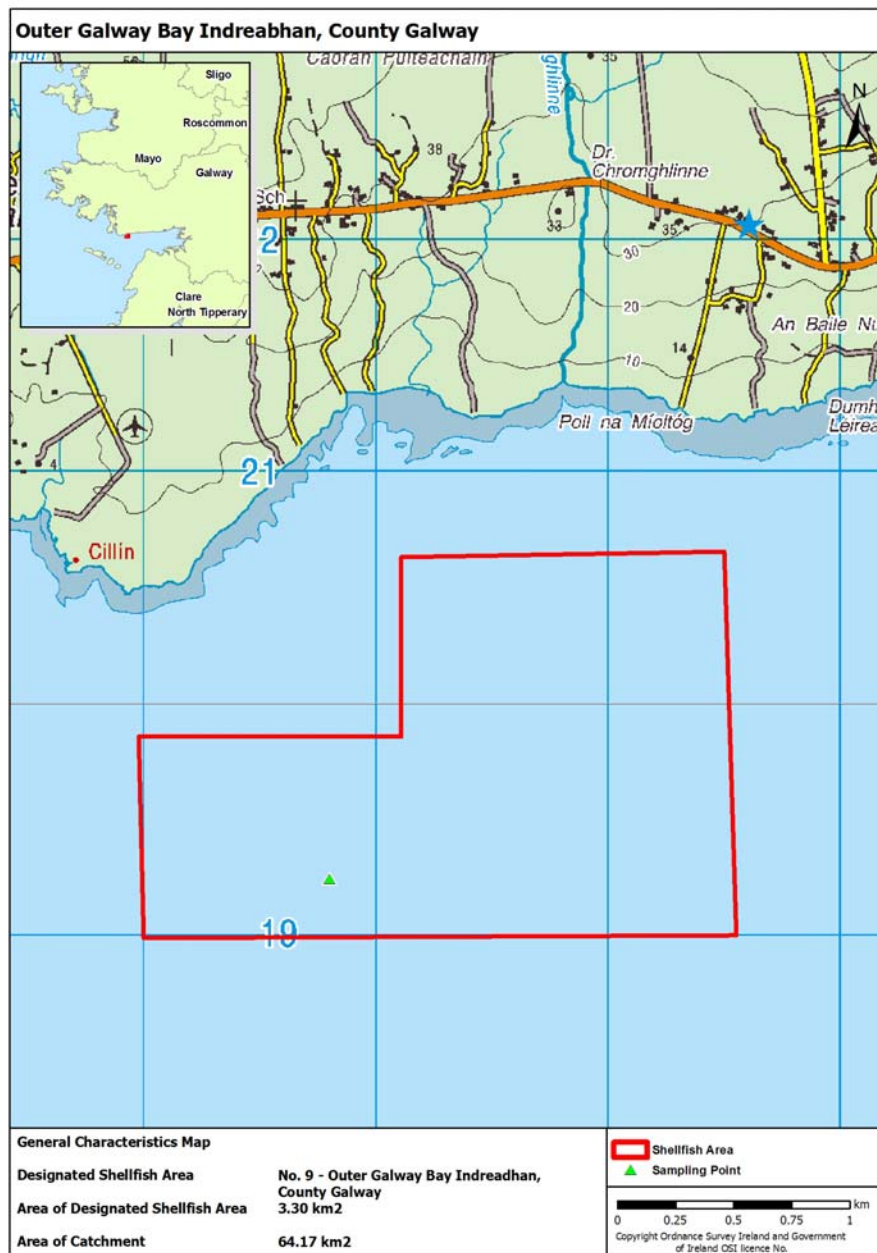


# Outer Galway Bay Indreabhán Pollution Reduction Programme



Name	Outer Galway Bay/Indreabhán Shellfish Area
Map number	9
Year of designation	2009
Area	3.3 km <sup>2</sup>
River Basin District	Western RBD
County	Galway
Location of sampling point	53 deg 12.900 min North (Lat) 9 deg 27.345 min West (Long)
Catchment area	64.17 km <sup>2</sup>

## 1.0 INTRODUCTION

"I, John Gormley, T.D., Minister for the Environment, Heritage and Local Government pursuant to the provisions of Section 6 of the European Communities (Quality of Shellfish Waters) Regulation 2006 (as amended) S. I. No. 268 of 2006, taking into account the public consultation process and the Strategic Environmental Assessment carried out under Directive 2001/42/EC, on the assessment of certain plans and programmes on the environment hereby establish the following pollution reduction programme for Outer Galway Bay Indreabhán."



Mr John Gormley TD  
Minister for the Environment,  
Heritage and Local Government

19/01/2010  
DATE

### 1.1 Programme Objective

Compliance with the standards and objectives established by the Quality of Shellfish Waters Regulations 2006 (S.I. No. 268 of 2006) (as amended) for the designated shellfish growing waters at Outer Galway Bay Indreabhán and with Article 5 of Directive 2006/113/EC of the European parliament and of the Council on the quality required for shellfish waters.

### 1.2 Pollution Reduction Programme

This pollution reduction programme for the shellfish growing waters at Outer Galway Bay Indreabhán has been established by the Minister for the Environment, Heritage and Local Government in order to protect and improve water quality in the designated shellfish growing areas in Outer Galway Bay Indreabhán and in particular, to ensure compliance with the standards and objectives for these waters established by the 2006 Quality of Shellfish Waters Regulations (S.I. No. 268 of 2006) and with Article 5 of Directive 2006/113/EC of the European parliament and of the Council on the quality required for shellfish waters.

### 1.3 Supporting Characterisation Report and Toolkit of Measures

The Pollution Reduction Programme stems from the work undertaken in the characterisation report for Outer Galway Bay Indreabhán. The characterisation is designed to achieve the following:

- establish the catchment that influences the water quality of the designated area;
- identify the different types of pressures or impacts prevalent in the catchment;
- establish an initial assessment of the water quality within the catchment and within the designated shellfish area using all water quality data available;
- from the above three elements identify the pressures that are active in the catchment and subsequently impacting the water quality in the designated

shellfish area;

- having identified the pressures impacting on the water quality the characterisation report prioritises them in relation to their impact.

The characterisation report thus provides a prioritised list of pressures/impacts/effects on water quality. The pollution reduction programme or action plan takes this prioritised list and addresses each issue with actions to help ensure that compliance with the relevant water quality standards is achieved or ensured.

The measures/actions included in this PRP to address the identified pressures on shellfish water quality in this catchment are based on a National Toolkit of Measures. The National Toolkit has been derived from earlier work carried out on the River Basin Management Plans under the Water Framework Directive (WFD), reflecting the common objective to improve water quality in the two Directives. In addition, designated shellfish waters are part of the WFD Register of Protected Areas, providing a further link between the Pollution Reduction Programmes and River Basin Management Planning.

Within each individual PRP specific measures from the National Toolkit are applied, where required, to address the key and secondary pressures identified in each of the designated shellfish waters.

#### **1.4 Strategic Environmental Assessment and Habitats Directive Assessment**

The Strategic Environmental Assessment (SEA) and Habitats Directive Assessment (HDA) processes were carried out in tandem with the PRP compilation process. These assessments both informed the development of alternatives considered for the PRP and included detailed high-level assessments highlighting the potential positive and negative impacts (including cumulative impacts) associated with application of the measures contained in the National Toolkit. In addition, a more focussed assessment was also carried out which considered the individual and cumulative impacts associated with implementation of the measures brought forward into this individual PRP.

As a result of the SEA and HDA assessments mitigation measures were identified in order to reduce potential negative impacts associated with implementation of the PRP. The relevant mitigation measures are included in Annex 2 of the PRP. The mitigation measures arising from the SEA are noted in black, while the mitigation measures arising from the HDA noted in blue.

#### **1.5 Monitoring of Water Quality**

The Marine Institute is carrying out a monitoring programme to monitor the condition of waters in the shellfish growing area and to verify compliance, or otherwise with the water quality standards outlined in Schedules 2 and 4 of the Quality of Shellfish Waters Regulations (S.I. No. 268 of 2006) and summarised in Table 1 of the Characterisation Report (Chapter 1 of the Characterisation Report refers). The Marine Institute will submit a report on water quality in respect of the designated area to the Minister each year, and will immediately bring to the attention of the Department of the Environment, Heritage and Local Government any non-compliance with a water quality standard to enable investigation to be undertaken.

#### **1.6 Review/monitoring of Pollution Reduction Programme**

This pollution reduction programme will be kept under review by the Minister and will be updated and amended as needed from time to time, having regard to water quality

conditions within the shellfish growing area including changes in water quality in response to the implementation of measures and other factors arising in the catchment that may affect water quality in the designated area.

The pollution reduction programme will be reviewed at intervals not exceeding three years and, where necessary, at lesser intervals if the monitoring data indicates a deterioration in water quality status or a risk that the objectives or standards laid down in the Regulations will not be achieved.

When the Pollution Reduction Programme is being reviewed the most current baseline data will be consulted.

Prior to the incorporation of the PRP into the second cycle of the River Basin Management Plans a review of the Strategic Environmental Objectives for Water will be carried out as against those drawn up for assessment of the first cycle River Basin Management Plans to ensure that the Shellfish PRP help to meet the wider Water Framework Directive water quality objectives.

### **1.7 Monitoring of Environmental Impacts**

Article 10 of the SEA Directive requires that monitoring be carried out in order to identify at an early stage any unforeseen adverse effects due to implementation of the PRP, with the view to taking remedial action where adverse effects are identified through monitoring. An Environmental Monitoring Programme has been developed which focuses on aspects of the environment that are likely to be impacted by the PRPs. The Environmental Monitoring Programme is included in Table 5 of the National Toolkit of Measures. The Department of the Environment, Heritage and Local Government will be the authority responsible for collecting and collating data under the Environmental Monitoring Programme. The data will be collected at the same time the pollution reduction programme is reviewed.

### **1.8 Monitoring Implementation of Pollution Reduction Programme**

This PRP is effectively a sub-basin plan of the River Basin Management Plan for the catchment and will be implemented during the first implementation cycle under the Water Framework Directive (i.e up to 2015).

Implementation of the pollution reduction programme will be monitored by Water Quality Section of the Department of the Environment, Heritage and Local Government.

The contact person is:

Mr. Paul Dunne  
Assistant Principal  
Water Quality Section  
Department of the Environment, Heritage and Local Government,  
Johnstown Castle Estate  
Wexford.

Phone No: 053 9163411 (+00 353 53 9163411)  
Fax No: 053 9165594 (+00 353 53 9165594)  
Email: paul\_dunne@environ.ie

## **2.0 STATUS/IMPACTS**

Overall status	<p>The results of monitoring undertaken for the purposes of the Shellfish Waters Directive (2006/113/EC) and Schedules 2 and 4 of the Quality of Shellfish Waters Regulations (S.I. No. 268 of 2006) do not indicate any shellfish water quality issues within / in the vicinity of this shellfish area.</p> <p>The results of WFD monitoring do not indicate any water quality issues within / in the vicinity of this shellfish area.</p> <p>Monitoring of shellfish flesh for food hygiene purposes does not indicate faecal contamination in this shellfish area. The bivalve mollusc production areas in Outer Galway Bay Indreabhán are classified as 'Class A' for the purposes of EC Regulation 854/2004.</p> <p>Chapter 3 of the Characterisation Report refers.</p>
Other issues	None
<b>3.0 PRESSURES/RISKS</b>	
<b>3.1 Key Pressures</b>	<p>Analysis of the Characterisation Report for this designated shellfish water suggests that there are no key pressures currently impacting shellfish water quality.</p> <p>Chapter 5 (summary at 5.3) of the Characterisation Report refers.</p>
<b>3.2 Potential Secondary Pressures</b>	<p>Analysis of the Characterisation Report for this designated shellfish water suggests that there are no secondary pressures potentially impacting shellfish water quality.</p> <p>Chapter 5 (summary at 5.3) of the Characterisation Report refers.</p>
<b>4.0 PROTECTED AREAS</b>	
Designated Shellfish Areas	Outer Galway Bay Indreabhán designated Shellfish Waters

## 5.0 ACTION PROGRAMME – MEASURES

### Future Development

Under Article 4 of the European Communities (Quality of Shellfish Waters) Regulations 2006 (S.I. No. 286 of 2006) (as amended), every public authority that has functions the performance of which may affect shellfish waters shall perform those functions in a manner that will promote compliance with the objectives of this pollution reduction programme and with the objectives of the Shellfish Waters Directive.

The functions of particular importance – in light of the objectives of Directive 2006/113/EC and of this PRP – include waste water treatment (licensing and operations), implementation of the GAP Regulations, waste management (licensing and operations), effluent discharge licences, planning and development and building control.

Continued monitoring will be carried out during the lifetime of the PRP. Should this monitoring identify pressures that are impacting on shellfish water quality in the designated area, the PRP will be appropriately amended.