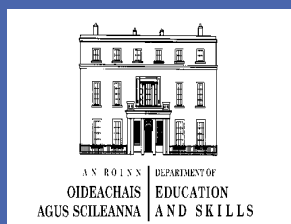


# SCHOOL PROVISION IN GAELTACHT LANGUAGE PLANNING AREAS: CURRENT SUPPLY AND FUTURE DEMAND

Department of  
Education and Skills



School Provision in Gaeltacht Language Planning Areas –  
Current Supply and Future Demand

© 2015 Department of Education and Skills

Published by:  
Department of Education and Skills  
Marlborough Street  
Dublin 1

This report and related reports may be accessed at  
[www.education.ie](http://www.education.ie)

Introduction.....	1
Planning school provision.....	1
Categorisation of primary and post-primary school provision.....	2
Overview: School places – supply and demand.....	3
Pre-school demand.....	3
Overview of school provision in the Gaeltacht Language Planning Areas (GLPAs)....	4
Total number of schools within the GLPAs.....	4
Total enrolment in schools within the GLPAs (2013/14 school year).....	4
<b>Table 1:</b> Population census data for each county Gaeltacht area and primary and post-primary Gaeltacht school enrolment data .....	5
<b>Table 2:</b> Pupil numbers in all-Irish Gaeltacht primary and post-primary schools in each GLPA, by county (2013/2014).....	6
<b>Table 3:</b> Actual primary school enrolments for 2013/14 in each GLPA and enrolment projections up to 2019.....	7
Graph representing enrolment projections at primary level .....	9
<b>Table 4:</b> Total post-primary school enrolments for 2013/14 in each of the feeder areas incorporating GLPAs and enrolment projections.....	10
<b>Table 5:</b> Census 2011 data on number of 3-14 year olds returned as Irish speakers in each county Gaeltacht area .....	14
<b>List of Maps:</b>	
➤ 314 school feeder areas and how they relate to and differ from the GLPAs.....	15
➤ Galway GLPA showing primary and post-primary schools .....	16
➤ Múscraí GLPA showing primary schools and post-primary schools.....	17
➤ Pre-existing Gaeltacht Areas and GLPAs with schools .....	18
➤ Pre-Schools in Gaeltacht.....	19
➤ Cork - Gaeltacht Language Planning Areas .....	20
➤ Donegal - Gaeltacht Language Planning Areas.....	21
➤ Galway - Gaeltacht Language Planning Areas.....	22
➤ Kerry - Gaeltacht Language Planning Areas.....	23
➤ Mayo - Gaeltacht Language Planning Areas.....	24
➤ Meath - Gaeltacht Language Planning Areas .....	25
➤ Waterford - Gaeltacht Language Planning Areas .....	26

## Introduction

This report provides an overview of school provision in the Gaeltacht. It constitutes one strand of a review of Gaeltacht education that has been carried out by the Department of Education and Skills (DES). Other strands of the Department's review include an analysis of national literature on Gaeltacht education, an analysis of relevant international research, and case studies in a sample of Gaeltacht schools. The aim of the DES review of Gaeltacht education is to identify policy options for the delivery of education in primary and post-primary schools of various linguistic profiles and to clarify the policy of the DES with regard to teaching through Irish in such schools.

This report describes current education provision in the Gaeltacht and analyses supply and demand in order to inform future education provision in each of the 26 Gaeltacht Language Planning Areas (GLPAs) in relation to:

- pre-school education;
- primary school education;
- post-primary school education.



## Planning school provision

For the purposes of planning school infrastructure at primary and post-primary levels, the country is divided into geographic districts known as school feeder areas. Each school feeder area typically contains several primary schools that feed into a post-primary centre. Each post-primary centre contains one or more post-primary schools located within it. The underlying assumption is that most pupils residing in an individual school feeder area will attend primary and post-primary schools within that area. However, it is recognised that some levels of inflow and outflow of pupils do occur and these are factored in when the provision of infrastructure is being planned.

There are 314 school feeder areas in total within the State that are used for planning school infrastructure at primary and post-primary levels. The 26 Gaeltacht Language Planning Areas (GLPAs) have a different geographic delineation. Typically therefore, GLPAs fall into one or more school feeder areas. A map showing the 314 school feeder areas and how they relate to and differ from the GLPAs is attached (see page 15).

While it has been possible using the Department's Geographic Information System (GIS) to examine the demographics, enrolments etc. for the specific GLPAs, the result of this exercise in terms of school accommodation cannot be taken in isolation from the broader school feeder area or areas within which a GLPA is located. This wider consideration is necessary because the schools within a GLPA do not serve just that particular geographic delineation but also serve the population in the broader school feeder area.

Examples that illustrate this point are:

-  Galway contains 10 GLPAs and those language planning areas are within, or partly within, 9 school feeder areas (see Map attached at page 16)
-  The Múscraí GLPA is within or partly within 3 school feeder areas (see Map attached at page 17).

## Categorisation of primary and post-primary school provision

In terms of language and medium of instruction, schools can be categorised as all-Irish; part-Irish; or English medium. Categorisations in this regard are typically self-reported by schools. Where schools are being newly established in areas of significant demographic growth, the Department determines the language medium of instruction in advance of commencement of the new school. New English medium post-primary schools must also provide an all-Irish *Aonad* within the new school if there is sufficient parental demand for this. An all-Irish *Aonad* is a distinct unit within an English medium post-primary school where students who wish to be educated through Irish can study at least most subjects, if not all, through Irish. The *Aonad* benefits from the staffing and facilities of the host school.

The categorisations regarding medium of instruction are recorded on the Department's Unified Data Model (UDM) and they are, among other things, used to determine resources for schools. The UDM provides access to the Department's various relevant databases that contain information on primary and post-primary schools including data such as the school roll number, school type, patronage details, language of instruction, enrolments and staffing numbers etc.

## Overview: School places – supply and demand

A national demographic review is underway in Forward Planning Section to determine where additional school provision might be needed from 2015 onwards at primary level and from 2016 onwards at post-primary level.

**This exercise is sufficiently advanced at primary level to indicate that little or no additional accommodation is needed in primary schools in the school feeder areas containing the GLPAs. The exception is in Galway city environs, but plans are already in train to address the increased demands for pupil places arising from the demographic increases in that area.**

**The early indications at post-primary level are also showing that little or no additional accommodation is needed in post-primary schools in the school feeder areas containing the GLPAs or serving the GLPAs.**

The data sets used to determine where additional school accommodation might be needed are wide-ranging. However, for the purposes of this report, to show that there is a sufficiency of accommodation in GLPAs at primary level, the most relevant data are the 2013/14 enrolments (these are the most up to date complete enrolments available) coupled with the projected demand for pupil places up to 2019 based on child benefit data for 0-4 year olds within those areas. **The projected enrolment trends at primary level in respect of each of the GLPAs are provided in detail in Table 3 on pages 7 and 8 of this report.**

The pupil trend projections at post-primary level are a derivation of the data sets referred to above and take account of the existing post-primary enrolments as well as the enrolments from primary level and the 0-4 year old child benefit data for each area. **The projected enrolment trends at post-primary level in respect of each of the GLPAs are provided in detail in Table 4 on pages 10, 11, 12 and 13 of this report.**

## Pre-school demand




The primary projection figures serve a dual purpose. They are based on child benefit data from the Department of Social Protection, which provide details on each individual child living in a particular area between the ages of 0 and 5. This data set will apply, year on year, to the numbers of children possibly looking for pre-schooling/enrolled in pre-schools in GLPAs and subsequently looking for primary school places between now and 2019.

While the data provided by Pobal regarding pre-schools has been mapped as part of this report (see Map on page 19 attached), no comprehensive information on these facilities in relation to their enrolments or capacities is available. In any event, the numbers attending or likely to attend pre-schools are a subset of the child benefit data and, therefore, the child benefit data presents a fuller and more complete picture of likely future trends.




## Overview of school provision in the Gaeltacht Language Planning Areas (GLPAs)

GLPAs are situated in counties Meath, Waterford, Cork, Kerry, Galway, Mayo and Donegal.

### The total number of schools within the GLPAs are:

-  134 primary schools, of which 105 are all-Irish, 21 are part-Irish, and 8 are English-medium schools.
-  26 post-primary schools, of which 19 are all-Irish, 1 is part-Irish, and 6 are English medium schools.
-  1 special school.

### The total enrolment in schools within the GLPAs in the 2013/14 school year was:

-  10,467 primary school pupils, of which 8,005 attend all-Irish medium schools.
-  5,323 post-primary school pupils [including PLC (Post Leaving Certificate) and VTOS (Vocational Training Opportunities Scheme) students], of which 3,189 attend all-Irish medium schools.
-  9 pupils in the Special School.

**Table 1: Table showing the population per census 2011 for each county Gaeltacht area and detail of the primary and post-primary age cohorts as well as actual enrolments in schools in Gaeltacht areas (CSO<sup>1</sup> and DES data)**

Area	Census 2011 total population	5-12 yrs (2011/12 primary age cohort)*	13-18 yrs (2011/12 post-primary age cohort)*	Gaeltacht primary schools enrolment 2011/12	Gaeltacht post-primary schools enrolment 2011/12
Cork Gaeltacht Areas	3,895	424	314	415	317
Donegal Gaeltacht Areas	24,744	2,774	1,990	2,639	1,862
Galway Gaeltacht Areas	48,907	5,464	3,956	4,560	1,192
Kerry Gaeltacht Areas	8,729	764	813	732	607
Mayo Gaeltacht Areas	10,886	1,056	873	1,051	1,053
Meath Gaeltacht Areas	1,771	242	179	425	129
Waterford Gaeltacht Areas	1,784	274	146	233	139
<b>Total</b>	<b>100,716</b>	<b>10,998</b>	<b>8,271</b>	<b>10,055</b>	<b>5,299</b>

\* Data from Census SAPMAPS, Theme 1.

It should be noted that the Census Gaeltacht areas do not correspond exactly with the GLPAs. This factor accounts for some of the variation between census data and school enrolments. Additionally, children residing in a GLPA may attend any school within the wider school feeder area or areas within which a GLPA is situated and the enrolment data for the GLPAs would indicate this as a further variable factor.

---

<sup>1</sup> CSO = Central Statistics Office



**Table 2: Table showing number of pupils in all-Irish primary and post-primary schools in each GLPA, by county, for the 2013/14 school year**

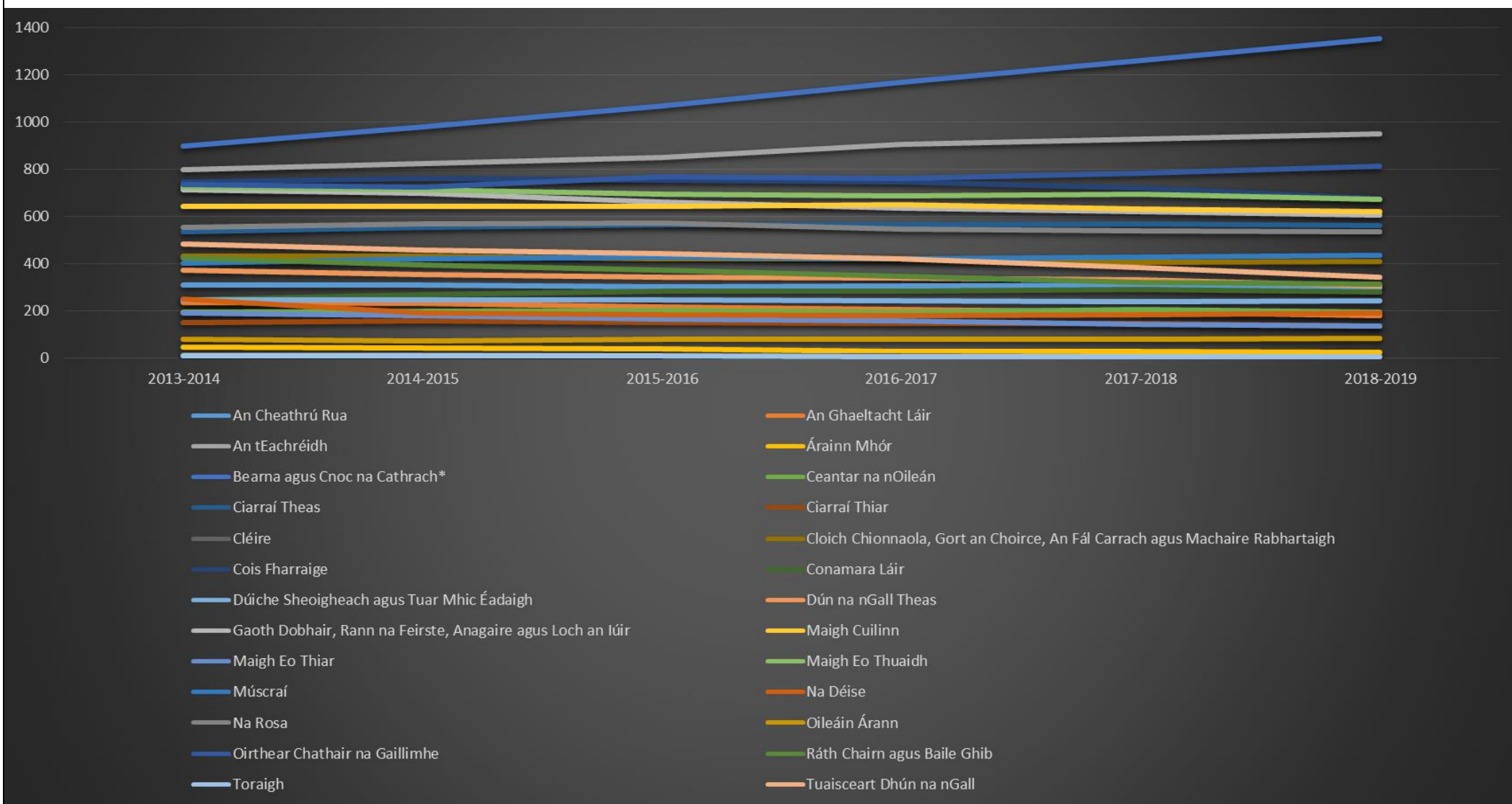
COUNTY NAME	GLPA	Number of primary schools	Number of Pupils	Number of post-primary schools	Number of Pupils
Galway	An Cheathrú Rua	2	311	1	302
Donegal	An Ghaeltacht Láir	4	176	1	246
Galway	An tEachréidh	2	519		
Donegal	Árainn Mhór	2	48		
Galway	Bearna agus Cnoc na Cathrach	3	902		
Galway	Ceantar na nOileán	5	196		
Kerry	Ciarraí Thiar	11	538	2	578
Kerry	Ciarraí Theas	3	151		
Cork	Cléire	1	12		
Donegal	Cloich Chionnaola, Gort an Choirce, An Fál Carrach agus Machaí	5	430		
Galway	Cois Fharraige	5	748	2	475
Galway	Conamara Láir	9	248	2	212
Galway	Dúiche Sheoigheach agus Tuar Mhic Éadaigh	6	247	2	261
Donegal	Dún na nGall Theas	5	371		
Donegal	Gaoth Dobhair, Rann na Feirste, Anagaire agus Loch an Iúir	8	719	1	344
Galway	Maigh Cuilinn	3	268		
Mayo	Maigh Eo Thiar	4	134		
Mayo	Maigh Eo Thuaidh	6	315	1	72
Cork	Múscraí	5	402	2	327
Waterford	Na Déise	3	251	1	128
Donegal	Na Rosa	2	307		
Galway	Oileáin Árann	4	78	2	94
Galway	Oirthear Chathair na Gaillimhe	1	143		
Meath	Ráth Chairn agus Baile Ghib	2	299	1	145
Donegal	Toraigh	1	11	1	5
Donegal	Tuaisceart Dhún na nGall	3	181		

**Table 3: Table showing total actual primary school enrolments for 2013/14 in each GLPA and enrolment projections up to 2019 – this table is also an indicator of the number of children that may require pre-school places during that period.**

County Name	GLPA	2013-2014	2014-2015	2015-2016	2016-2017	2017-2018	2018-2019
Galway	An Cheathrú Rua	311	311	303	304	309	297
Donegal	An Ghaeltacht Láir	235	232	215	207	196	178
Galway	An tEachréidh	799	823	850	905	928	950
Donegal	Árainn Mhór	48	42	39	29	26	23
Galway	Bearna agus Cnoc na Cathrach*	898	980	1067	1167	1263	1354
Galway	Ceantar na nOileán	196	197	201	195	204	194
Kerry	Ciarraí Thiar	535	553	565	566	567	562
Kerry	Ciarraí Theas	151	156	149	148	148	136
Cork	Cléire	12	14	11	10	7	5
Donegal	Cloich Chionnaola, Gort an Choirce, An Fál Carrach agus Machaire Rabhartaigh	430	430	421	419	406	410
Galway	Cois Fharraige	746	760	754	746	722	677
Galway	Conamara Láir	248	268	283	283	291	281
Galway	Dúiche Sheoigheach agus Tuar Mhic Éadaigh	247	246	246	243	238	241
Donegal	Dún na nGall Theas	371	352	343	339	333	305
Donegal	Gaoth Dobhair, Rann na Feirste, Anagaire agus Loch an Iúir	713	697	662	635	620	605

Galway	Maigh Cuilinn	643	643	643	651	632	619
Mayo	Maigh Eo Thiar	192	181	165	158	144	137
Mayo	Maigh Eo Thuaidh	724	712	695	687	694	674
Cork	Múscraí	402	422	429	421	429	437
Waterford	Na Déise	251	190	184	180	182	191
Donegal	Na Rosa	554	569	574	547	539	535
Galway	Oileáin Árann	78	72	81	79	80	82
Galway	Oirthear Chathair na Gaillimhe	735	726	767	760	782	814
Meath	Ráth Chairn agus Baile Ghib	426	396	371	345	322	312
Donegal	Toraigh	11	11	10	6	6	6
Donegal	Tuaisceart Dhún na nGall	483	457	441	421	383	341

**Graph representing enrolment projections at primary level up to 2019**



**Table 4: Table showing total actual post primary school enrolments for 2013/14 in each of the feeder areas incorporating the GLPAs and enrolment projections up to 2026.**

County	GLPA	PP_Fee der_ Areas	Current Yr (13- 14) Actual Enr	Project -ed Total Enr 14-15	Project -ed Total Enr 15-16	Project -ed Total Enr 16-17	Project -ed Total Enr 17-18	Project -ed Total Enr 18-19	Project -ed Total Enr 19-20	Project -ed Total Enr 20-21	Project -ed Total Enr 21-22	Project -ed Total Enr 22-23	Project -ed Total Enr 23-24	Project -ed Total Enr 24-25	Project -ed Total Enr 25-26	Project -ed Total Enr 26-27
Gaillimh	An Cheathrú Rua	An Cheathrú Rua	303	301	296	292	293	305	312	321	322	318	318	307	306	289
Dún na nGall	An Ghaeltacht Láir	Na Gleannta	634	599	596	587	597	623	632	638	645	618	593	546	530	532
Dún na nGall		Sraith an Urláir	1,177	1,164	1,129	1,107	1,109	1,103	1,117	1,144	1,164	1,175	1,194	1,159	1,145	1,085
Dún na nGall		Dún na nGall	758	774	769	787	771	788	788	785	782	770	775	758	734	721
Gaillimh	An tÉachréidh	Cathair na Gaillimhe	4,977	5,174	5,282	5,386	5,453	5,532	5,644	5,766	5,931	6,012	6,231	6,429	6,563	6,499
Dún na nGall	Árainn Mhór	An Clochán Liath	569	559	552	559	533	523	516	520	512	517	529	509	476	493
Gaillimh	Bearna agus Cnoc na Cathach	Cathair na Gaillimhe	4,977	5,174	5,282	5,386	5,453	5,532	5,644	5,766	5,931	6,012	6,231	6,429	6,563	6,499
Gaillimh		An Spidéal Indreabhán	471	502	523	553	609	655	688	710	744	753	747	768	775	762
Gaillimh	Ceantar na nOileán	An Cheathrú Rua	303	301	296	292	293	305	312	321	322	318	318	307	306	289
Ciarraí	Ciarraí Theas	Caisleán Ghriaire	137	128	122	125	120	113	118	124	127	130	134	136	135	131
Ciarraí	Ciarraí Thiar	Daingean Uí Chúis	574	554	494	461	441	410	406	407	405	407	414	422	422	412

Ciarraí		Cathair Saidhbhín_An Coireán	481	487	487	482	481	497	517	535	524	509	473	450	416	410
Corcaigh	Cléire	An Sciobairín	841	843	844	837	823	806	816	817	810	800	803	777	770	742
Dún na nGall	Cloich Chionnaola, Gortan Choirae, An Fál Carrach agus Machaire Rabhartaigh	An Fálcarra ch	426	443	432	435	456	455	454	446	434	420	411	420	400	411
Gaillimh	Cois Fharraige	An Cheathrú Rua	303	301	296	292	293	305	312	321	322	318	318	307	306	289
Gaillimh	Conamara Láir	Cárna	99	89	85	85	80	81	85	88	96	95	105	106	99	97
Gaillimh		An Clochán	407	407	404	406	439	421	421	418	417	409	383	397	391	392
Gaillimh		Ros Muc	98	86	75	71	62	53	53	56	62	64	62	59	58	53
Gaillimh	Dúiche Sheoigheach agus Tuar Mhic Éadaigh	Cárna	99	89	85	85	80	81	85	88	96	95	105	106	99	97
Gaillimh		An Clochán	407	407	404	406	439	421	421	418	417	409	383	397	391	392
Gaillimh		Corr na Móna	105	106	110	102	105	107	108	107	111	108	117	121	121	115
Maigh Eo		Tuar Mhic Éadaigh	155	167	166	163	159	153	149	149	138	132	122	112	107	99
Dún na nGall	Dún na nGall Theas	Na Gleannta	634	599	596	587	597	623	632	638	645	618	593	546	530	532
Dún na nGall		An Charraig	237	246	241	234	221	223	217	216	215	213	209	201	192	180
Dún na nGall	Gaoth Dobhair, Rann na Feirste, An agaíre agus Loch an Iúir	An Clochán Liath	569	559	552	559	533	523	516	520	512	517	529	509	476	493
Dún na nGall		Gaoth Dobhair	341	334	360	383	375	364	355	354	355	338	331	328	325	318

Dún na nGall		Oileán Thoraí	5	6	6	8	8	7	9	9	5	5	5	2	2	1
Gaillimh	<b>Maigh Cuilinn</b>	An Spidéal _Indrea bhán	471	502	523	553	609	655	688	710	744	753	747	768	775	762
Maigh Eo	<b>Maigh Eo Thiar</b>	Acaill	222	219	215	219	227	219	221	208	203	188	175	169	157	163
Maigh Eo	<b>Maigh Eo Thuaidh</b>	Béal an Mhuirt head	611	568	558	554	550	537	523	522	534	537	517	505	511	488
Maigh Eo		An Leacain _Baile an Chaisleáin	220	233	220	200	193	195	201	202	197	191	189	168	143	155
Maigh Eo		Ros Dumhaich	54	59	59	59	57	51	50	44	44	41	37	36	31	31
Corcaigh	<b>Múscraí</b>	Béal Átha an Ghaorthaidh	105	104	110	108	104	85	84	76	69	65	64	65	68	63
Corcaigh		Baile Bhuirne	222	210	209	223	212	205	230	245	264	265	282	290	277	280
Corcaigh		Maigh Chromtha	817	801	782	762	758	789	832	857	898	926	962	970	963	960
Port Láirge	<b>Na Déise</b>	Rinn Ó gCuanaich	129	139	120	101	79	59	47	34	33	36	39	39	40	42
Dún na nGall	<b>Na Rosa</b>	An Clochán Liath	569	559	552	559	533	523	516	520	512	517	529	509	476	493
Gaillimh	<b>Oileáin Árann</b>	Cill Rónáin _Oileáin Árann	94	96	81	68	53	56	49	51	53	49	59	55	55	62
Gaillimh	<b>Oirthear Chathair na Gaillimhe</b>	Cathair na Gaillimhe	4,977	5,174	5,282	5,386	5,453	5,532	5,644	5,766	5,931	6,012	6,231	6,429	6,563	6,499

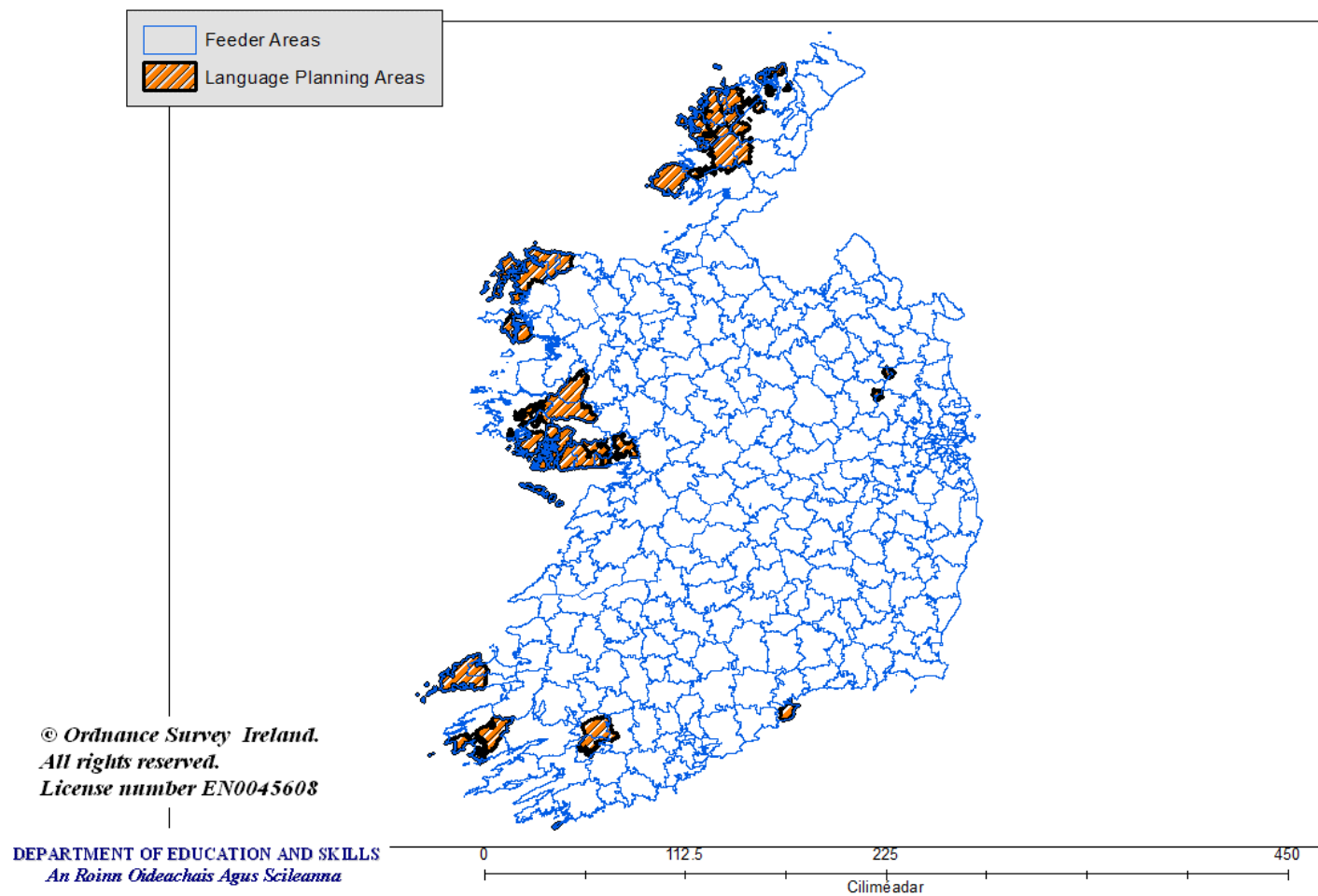
An Mhí	<b>Ráth Chairn agus Baile Ghib</b>	Baile Átha Buí	698	778	858	934	965	1,026	1,049	1,061	1,069	1,126	1,167	1,214	1,209	1,201
An Mhí		Ceanannas	1,319	1,363	1,370	1,394	1,405	1,422	1,471	1,438	1,488	1,511	1,550	1,563	1,540	1,576
An Mhí		An Uaimh	2,782	2,932	3,002	3,126	3,246	3,417	3,516	3,639	3,682	3,799	3,867	3,937	3,922	3,884
An Mhí		Baile Átha Troim	1,396	1,481	1,544	1,592	1,617	1,632	1,676	1,694	1,713	1,749	1,807	1,840	1,823	1,802
Dún na nGall	<b>Tuaisceart Dhún na nGall</b>	An Fálcarra ch	426	443	432	435	456	455	454	446	434	420	411	420	400	411
Dún na nGall		Gaoth dobhair	341	334	360	383	375	364	355	354	355	338	331	328	325	318
Dún na nGall		Leitir Ceanain n	2,283	2,471	2,574	2,729	2,814	2,926	3,046	3,095	3,148	3,219	3,294	3,322	3,357	3,282
Dún na nGall		Baile na nGallógl ach	1,074	1,109	1,095	1,086	1,055	1,062	1,047	1,040	1,063	1,057	1,036	1,025	981	984



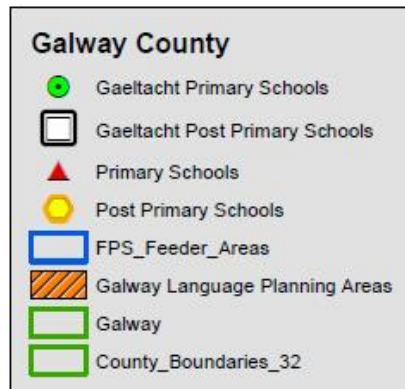
**Table 5: Table showing Census 2011 data regarding number of 3-14 year olds returned as Irish speakers in each county Gaeltacht area (CSO data)**

<b>Area</b>	<b>Census 2011 total population</b>	<b>3-14 year olds</b>	<b>No. of of 3-14 year olds Irish speakers</b>
Cork Gaeltacht Areas	3895	683	600
Donegal Gaeltacht Areas	24744	4113	3380
Galway Gaeltacht Areas	48907	5842	4769
Kerry Gaeltacht Areas	8729	1272	1103
Mayo Gaeltacht Areas	10886	1625	1250
Meath Gaeltacht Areas	1771	375	283
Waterford Gaeltacht Areas	1784	393	338
<b>Total</b>	<b>100716</b>	<b>14303</b>	<b>11723</b>

## Map showing the 314 school feeder areas and how they relate to and differ from the GLPAs

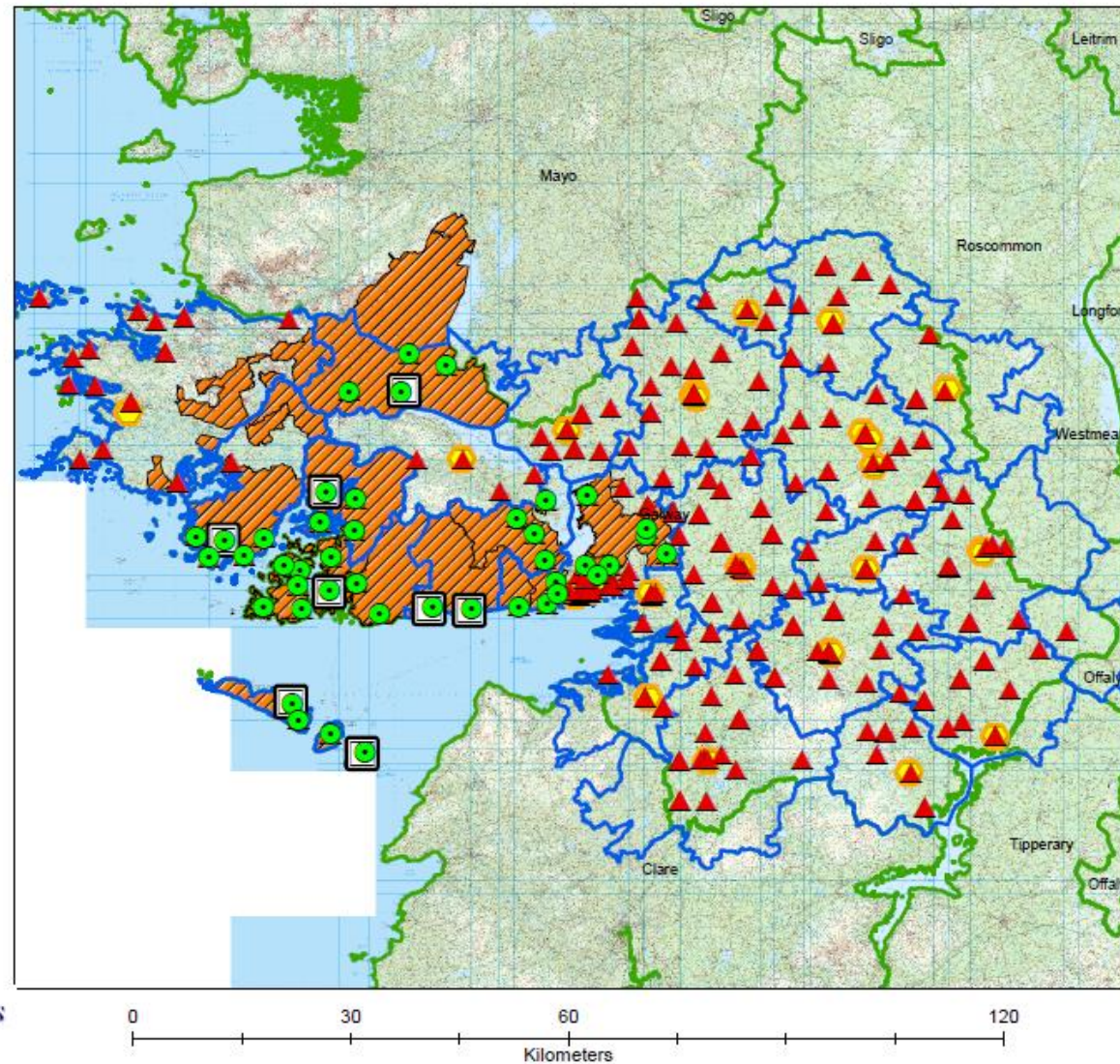


## Map of Galway GLPA showing primary and post-primary schools, with FPS planning areas



© Ordnance Survey Ireland.  
All rights reserved.  
License number EN0045608

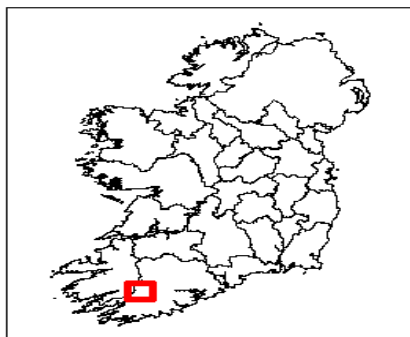
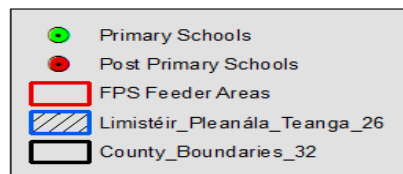
DEPARTMENT OF EDUCATION AND SKILLS  
*An Roinn Oideachais Agus Scileanna*





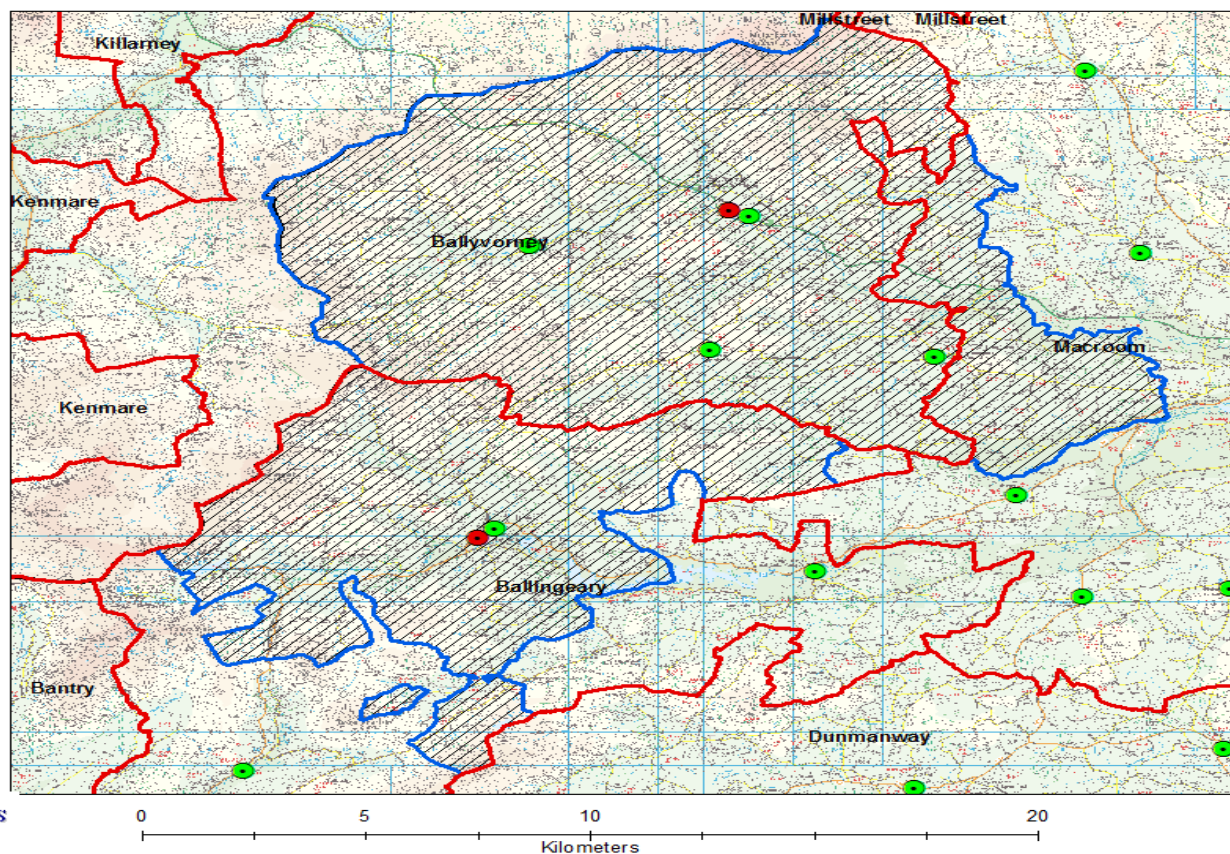
## Map of Múscraí GLPA showing primary schools (green) and post-primary schools (red)

- ✚ The Múscraí GLPA is covered by part (but not all) of 3 school feeder areas namely Ballyvorney, Ballingeary and Macroom.
- ✚ In total there are 5 primary schools in Múscraí with a total of 402 pupils
- ✚ All 5 schools are categorised as “All-Irish”
- ✚ Across all 5 schools, 17 pupils (4%) are categorised as “non-Irish”
- ✚ There are 2 post-primary schools in Múscraí with a total enrolment of 326 pupils
- ✚ Both post-primary schools are categorised as “All-Irish” by the Department
- ✚ Across both schools, there are 11 pupils (3%) with a country of birth other than Ireland

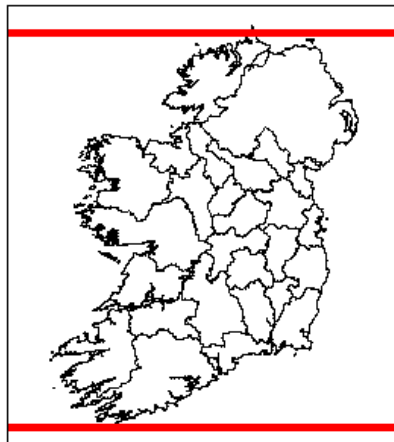
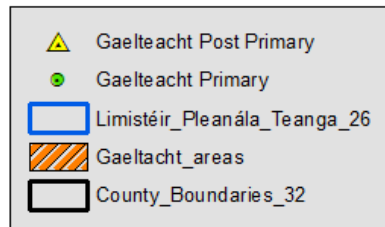


© Ordnance Survey Ireland.  
All rights reserved.  
License number EN0045608

DEPARTMENT OF EDUCATION AND SKILLS  
An Roinn Oideachais Agus Scileanna

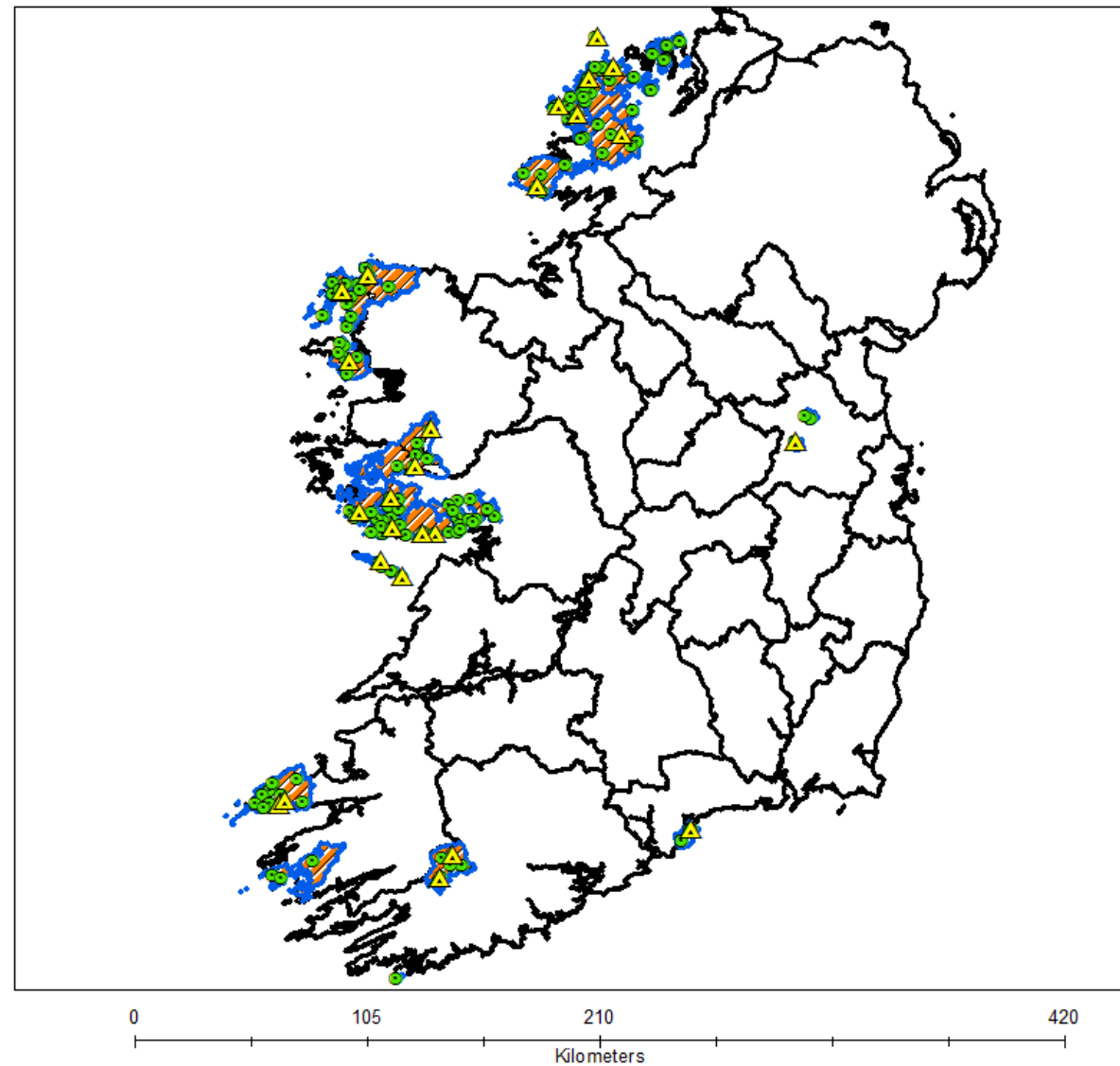


## Pre-existing Gaeltacht Areas and Gaeltacht Language Planning Areas with schools turned on

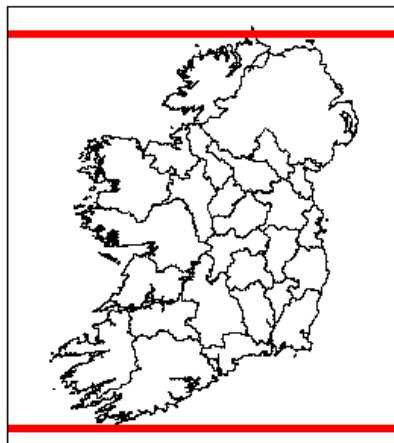
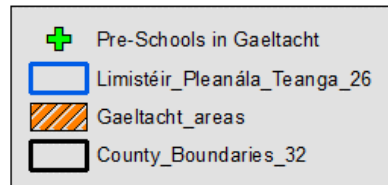


© Ordnance Survey Ireland.  
 All rights reserved.  
 License number EN0045608

DEPARTMENT OF EDUCATION AND SKILLS  
 An Roinn Oideachais Agus Scileanna

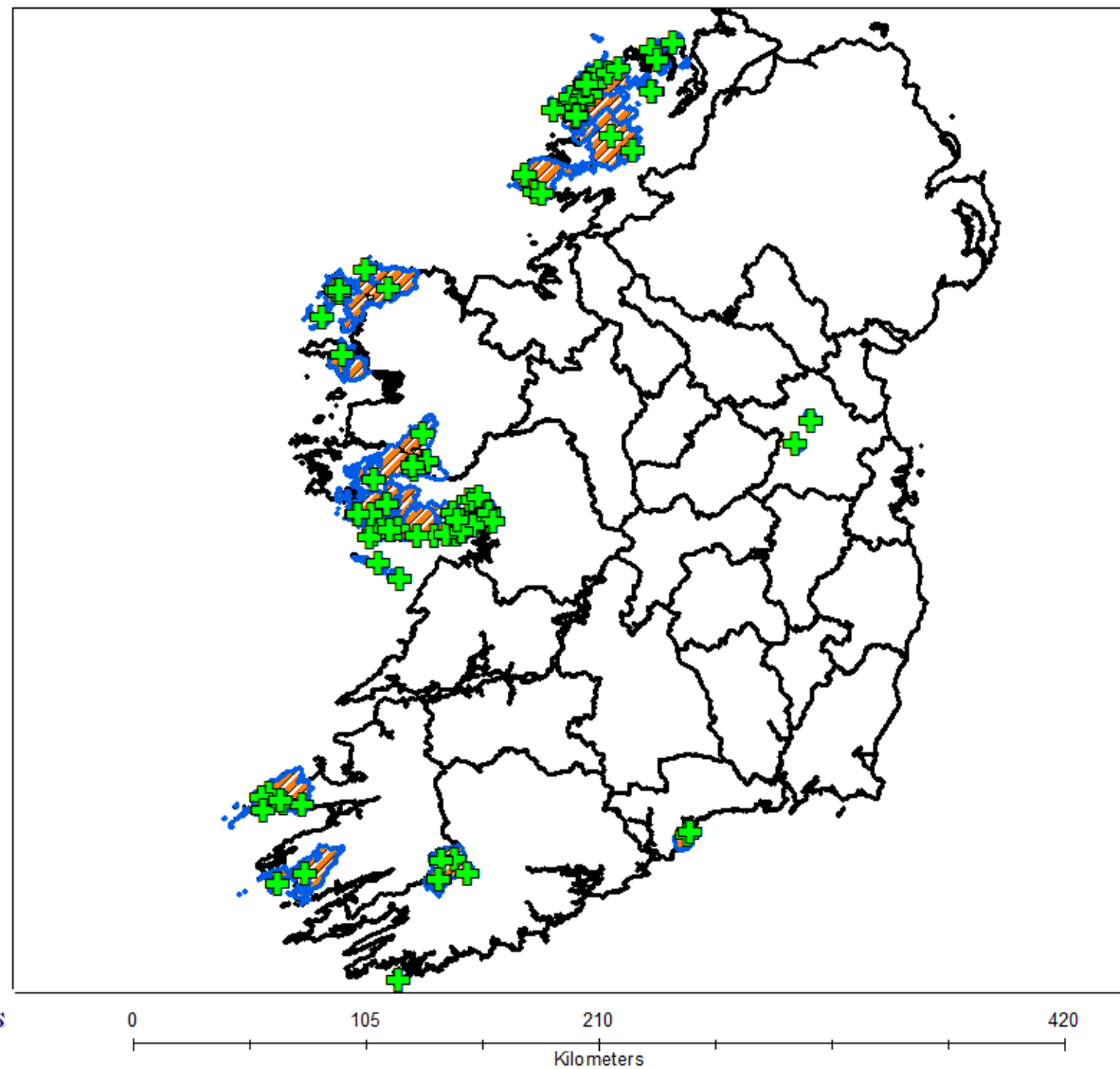


## Pre-Schools in Gaeltacht



© Ordnance Survey Ireland.  
 All rights reserved.  
 License number EN0045608



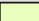
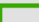
DEPARTMENT OF EDUCATION AND SKILLS  
 An Roinn Oideachais Agus Scileanna

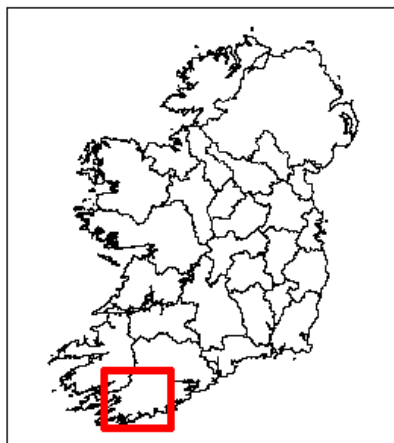




## Cork – Gaeltacht Language Planning Areas

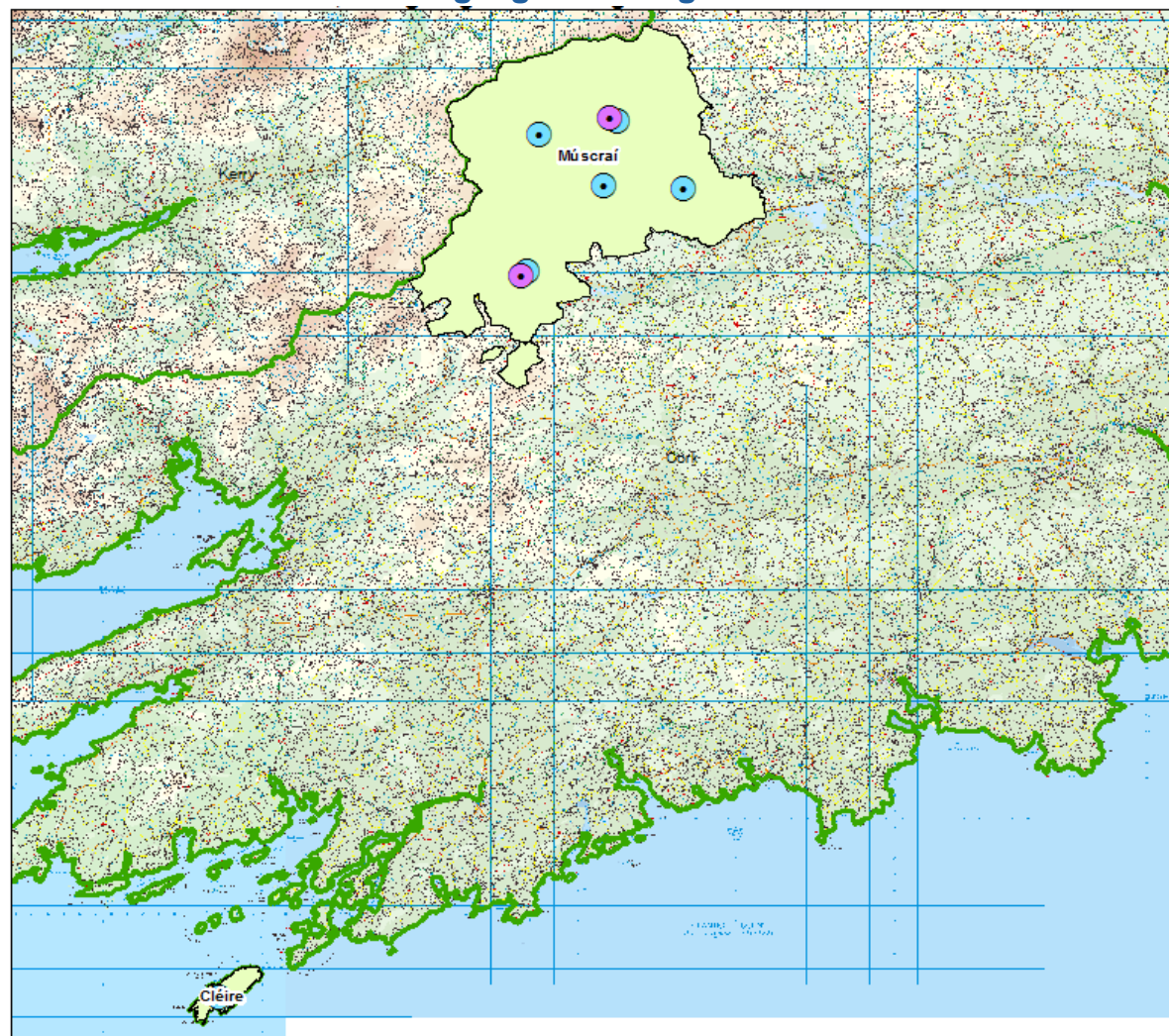
### Cork County

-  Gaeltacht Primary
-  Gaeltacht Post Primary
-  Limistéir\_Pleanála\_Teanga\_26
-  County\_Boundaries\_32



© Ordnance Survey Ireland.  
All rights reserved.  
License number EN0045608

DEPARTMENT OF EDUCATION AND SKILLS  
*An Roinn Oideachais Agus Scileanna*

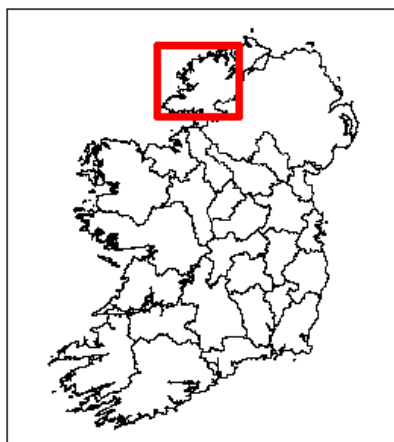


0 15 30 60  
Kilometers

## Donegal - Gaeltacht Language Planning Areas

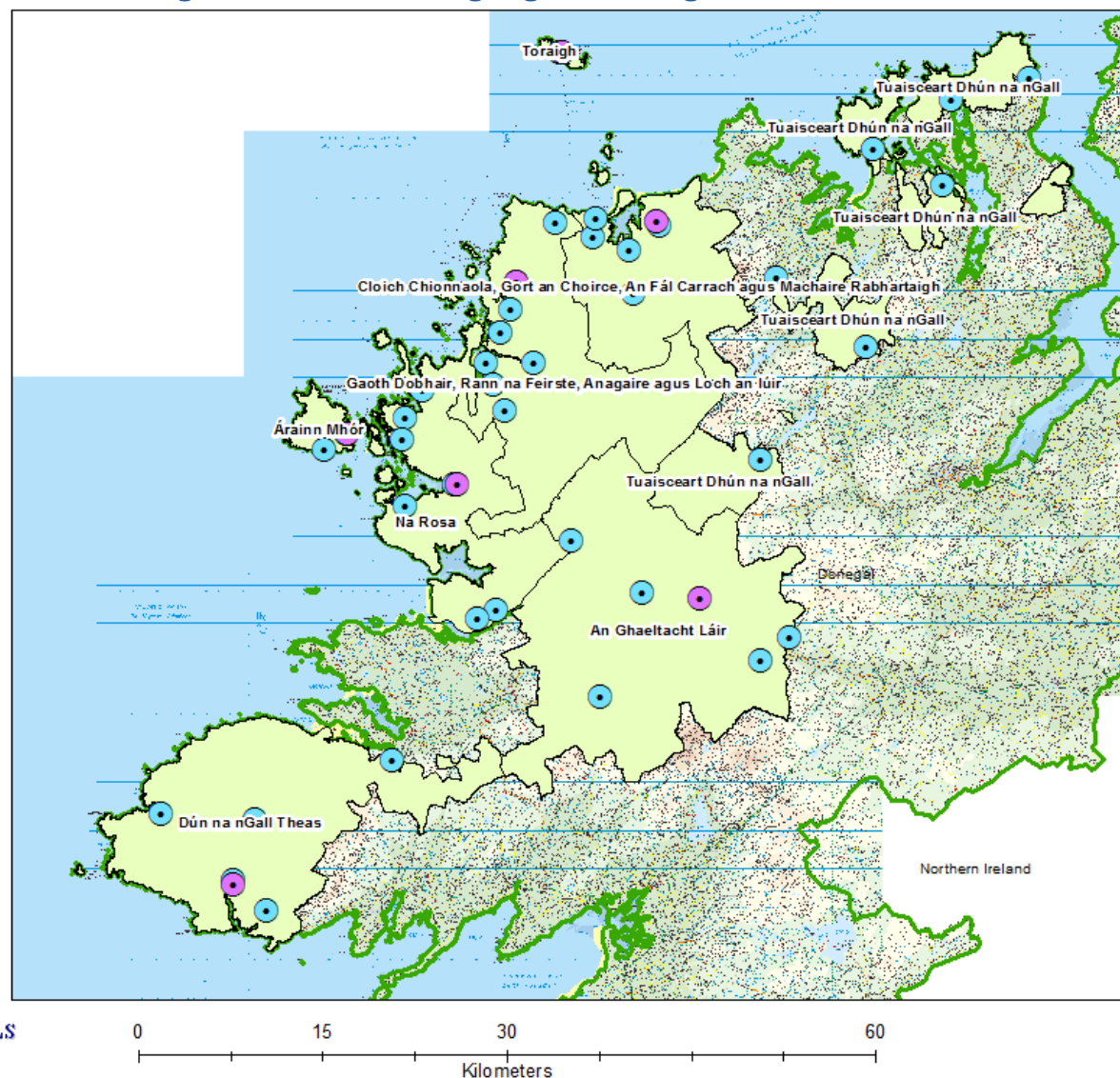
### Donegal County

- Gaelteacht Primary
- Gaelteacht Post Primary
- Limistéir\_Pleanála\_Teanga\_26
- County\_Boundaries\_32



© Ordnance Survey Ireland.  
All rights reserved.  
License number EN0045608

DEPARTMENT OF EDUCATION AND SKILLS  
An Roinn Oideachais Agus Scileanna

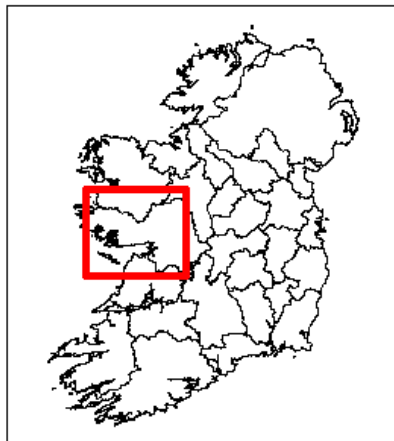




## Galway - Gaeltacht Language Planning Areas

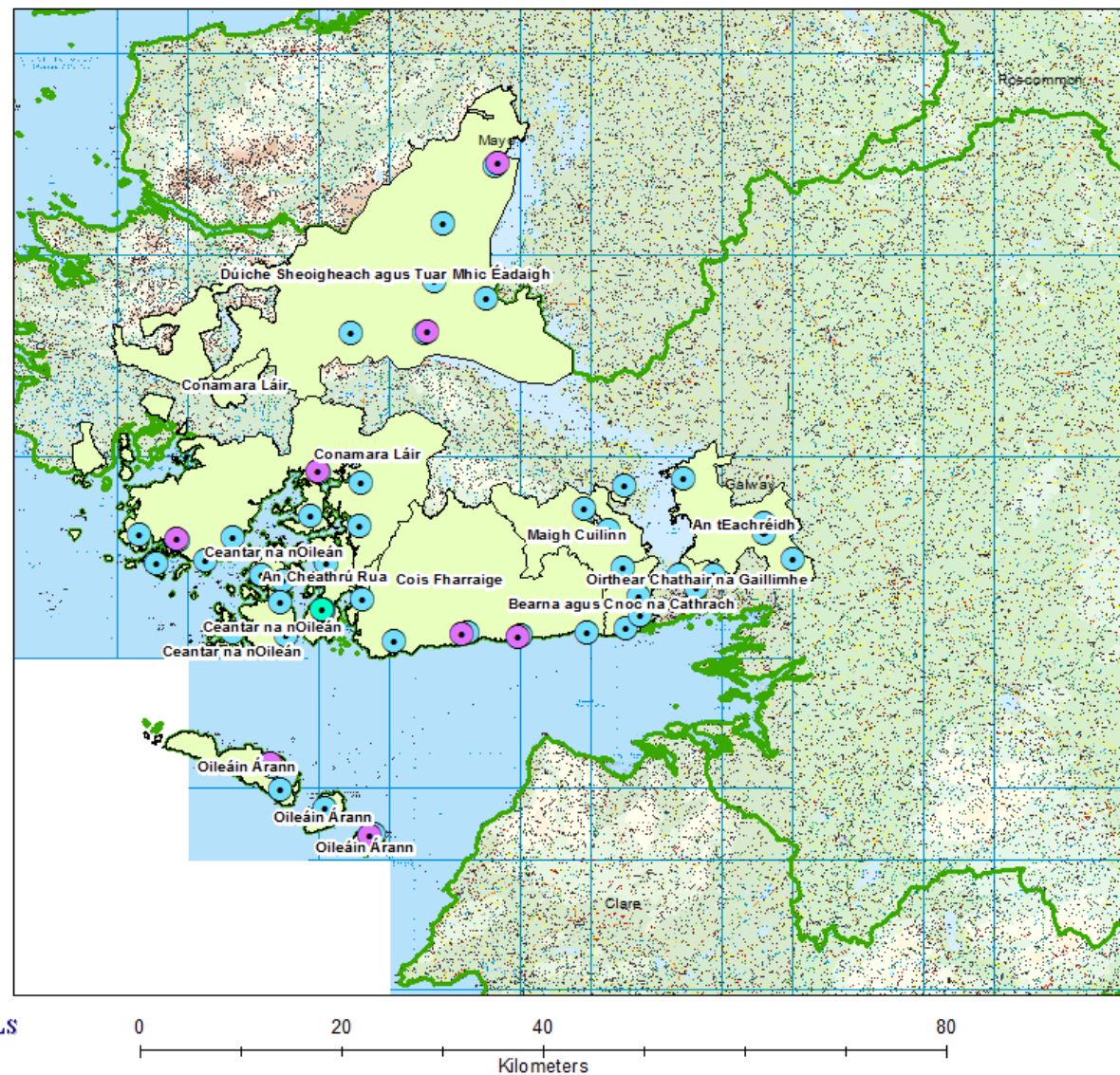
### Galway County

- Gaeltacht Primary
- Gaeltacht Post Primary
- Special School
- Limistéir\_Pleanála\_Teanga\_26
- County\_Boundaries\_32

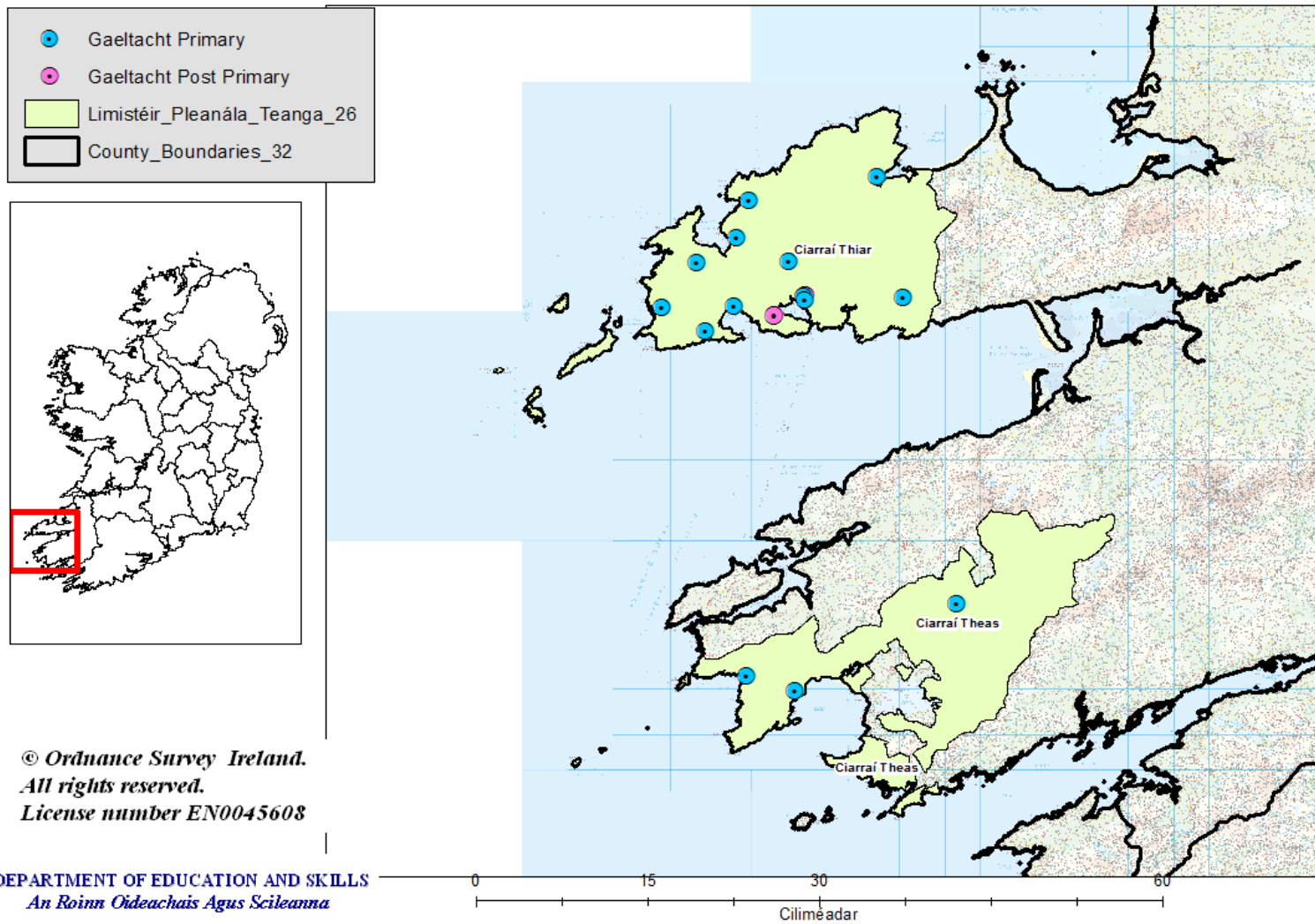


© Ordnance Survey Ireland.  
All rights reserved.  
License number EN0045608

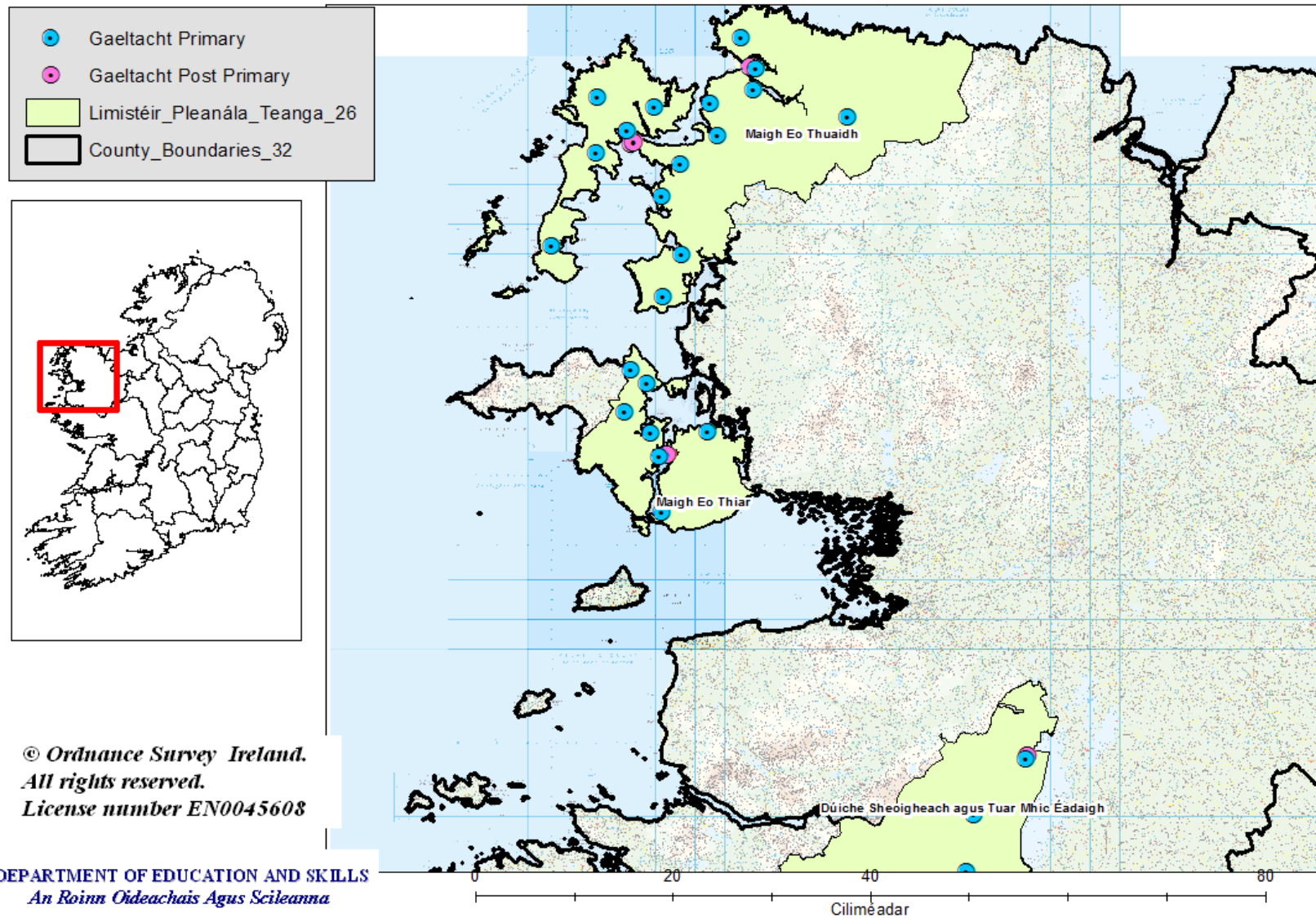
DEPARTMENT OF EDUCATION AND SKILLS  
*An Roinn Oideachais Agus Scileanna*



## Kerry - Gaeltacht Language Planning Areas



## Mayo - Gaeltacht Language Planning Areas

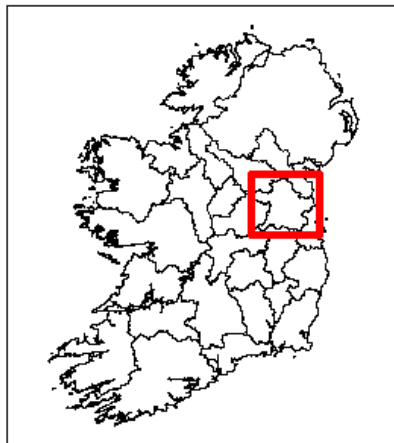




## Meath - Gaeltacht Language Planning Areas

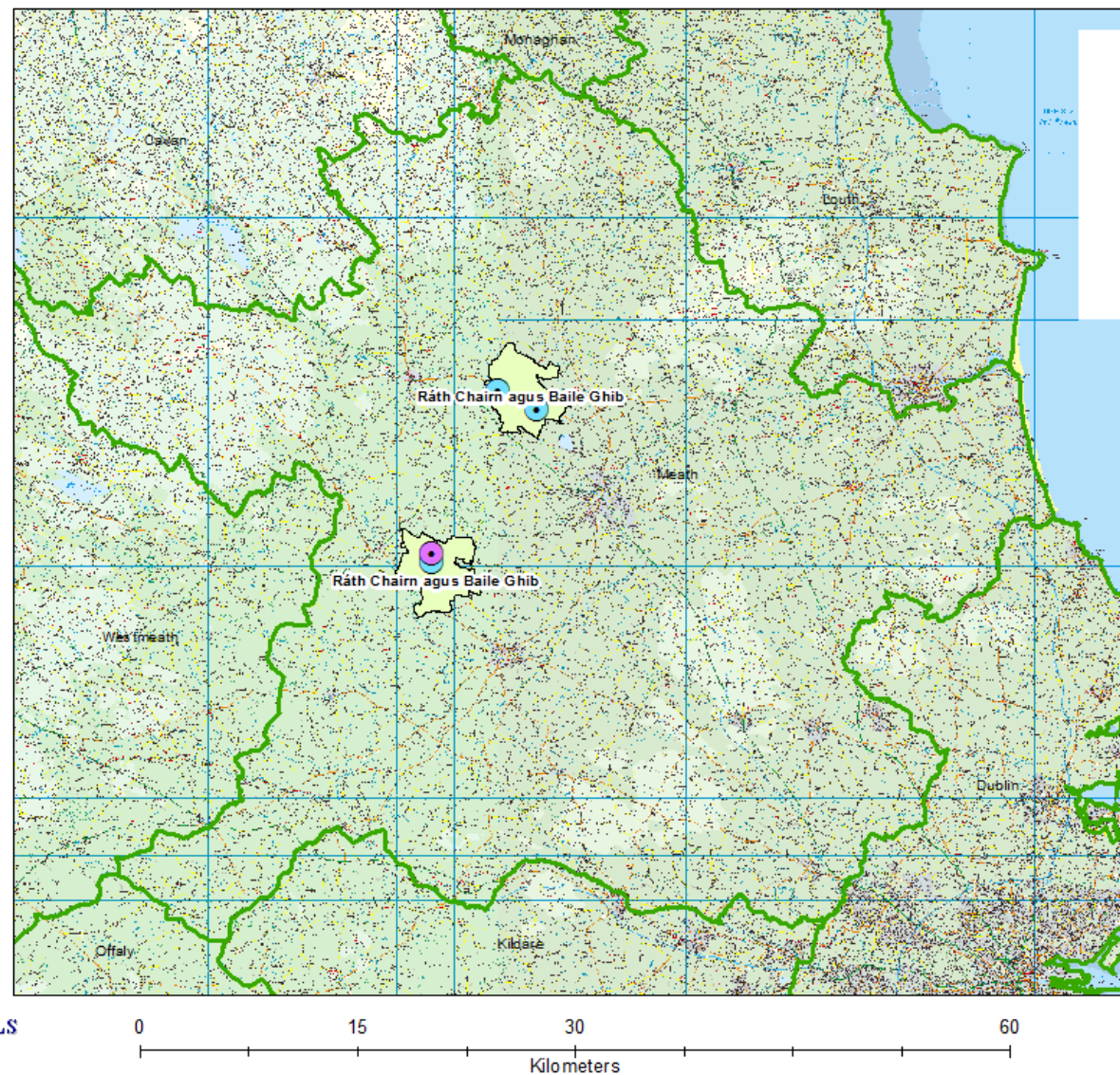
### Meath County

- Gaeltacht Primary
- Gaeltacht Post Primary
- Limistéir\_Pleanála\_Teanga\_26
- County\_Boundaries\_32







© Ordnance Survey Ireland.  
All rights reserved.  
License number EN0045608

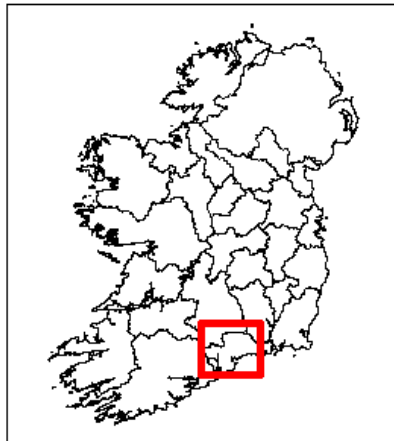
DEPARTMENT OF EDUCATION AND SKILLS  
*An Roinn Oideachais Agus Scileanna*



## Waterford - Gaeltacht Language Planning Areas

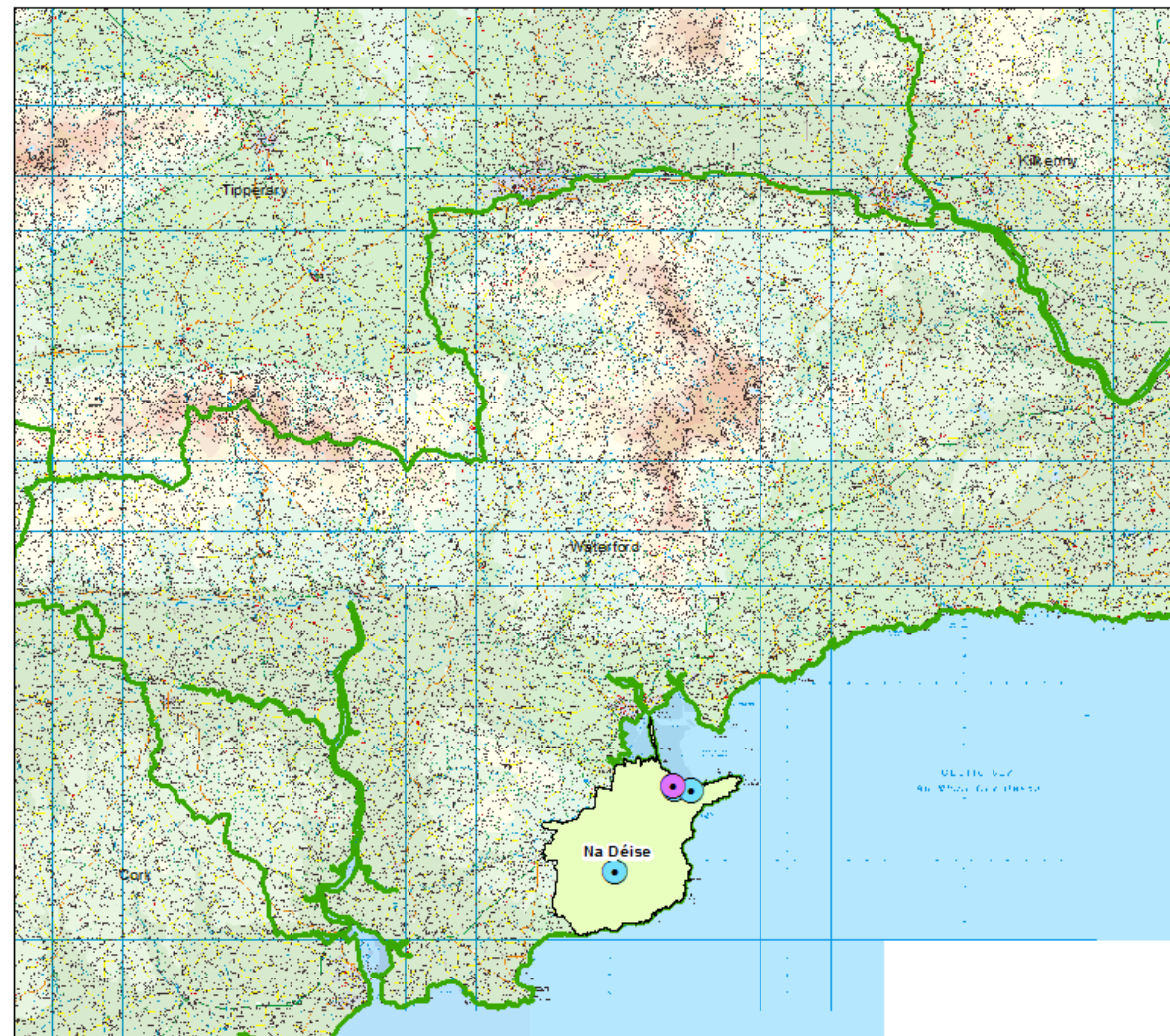
### Waterford County

-  Gaeltacht Primary
-  Gaeltacht Post Primary
-  Limistéir\_Pleanála\_Teanga\_26
-  County\_Boundaries\_32



© Ordnance Survey Ireland.  
All rights reserved.  
License number EN0045608

DEPARTMENT OF EDUCATION AND SKILLS  
*An Roinn Oideachais Agus Scileanna*



0 12.5 25 50  
Kilometers