



**lwetb**

*Bord Oideachais agus Oiliúna  
an Longfoirt agus na hIarmhí*  
Longford and Westmeath  
Education and Training Board

# Longford and Westmeath Education and Training Board

## Just Transition Fund 2020

### Strand 2 Application

### MRTT: 118 DIGITAL LEARNING HUB - LONGFORD

04<sup>th</sup> July 2021

Bríomhar | Ilchineálach | Nuálach

DYNAMIC-DIVERSE-INNOVATIVE | Dynamic | Diverse | Innovative

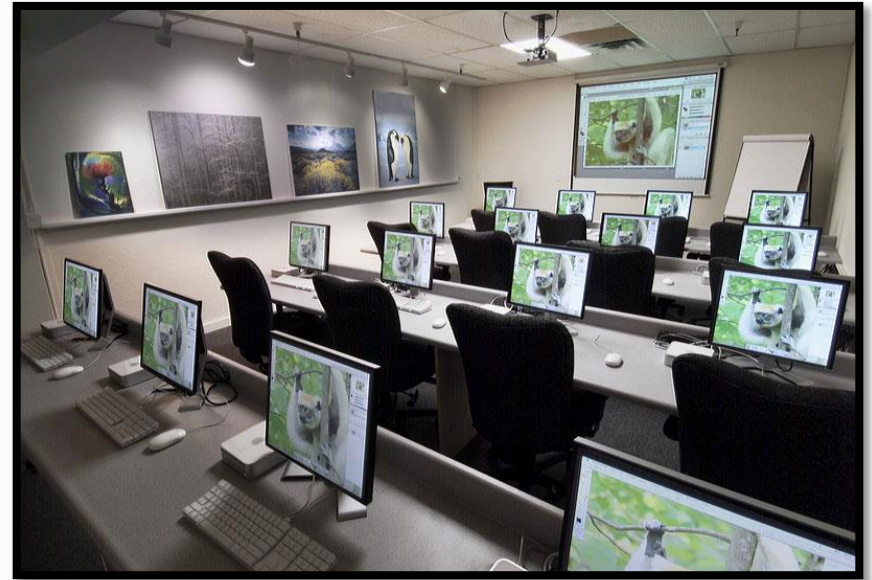


**Iwetb**

*Bord Oideachais agus Oiliúna  
an Longfoirt agus na hIarmhí*  
Longford and Westmeath  
Education and Training Board

## Summary of Slides

- Overview of Iwetb
- Project Location
- Project Ambition
- KPIs and Outcomes
- Proposed General Arrangements
- 5 Key Milestones
- Further Education and Training Services





**lwetb**

*Bord Oideachais agus Oiliúna  
an Longfoirt agus na hIarmhí*  
Longford and Westmeath  
Education and Training Board

## Overview of LWETB:

2013

Established July 1st 2013 under the ETB Act 2013

Longford &  
Westmeath

Amalgamation of Longford ETB and Westmeath ETB

2014

SOLAS Training Provision for Longford and Westmeath  
incorporated to LWETB in 2014

Population  
129,000

LWETB provides Education and Training services to a  
population of over 129,000 (CSO 2016) across, Further  
Education and Training (FET) and Schools.



**lwetb**

*Bord Oideachais agus Oiliúna  
an Longfoirt agus na hIarmhí*  
Longford and Westmeath  
Education and Training Board

## Overview of FET in LWETB

**12 Primary Locations**

**Approx. 30 Secondary  
Locations**

**Learners Aged 15 Upwards**

**Levels 1 – 6 on the Framework  
of Qualifications**

**All Year Round**

**Full and Part Time  
Programmes**

**Day and Evening  
Programmes**

**Upskilling and Reskilling**

**Unemployed and Employed Learners**

**Partnerships with other State  
Agencies  
(Education and Non-Education)**

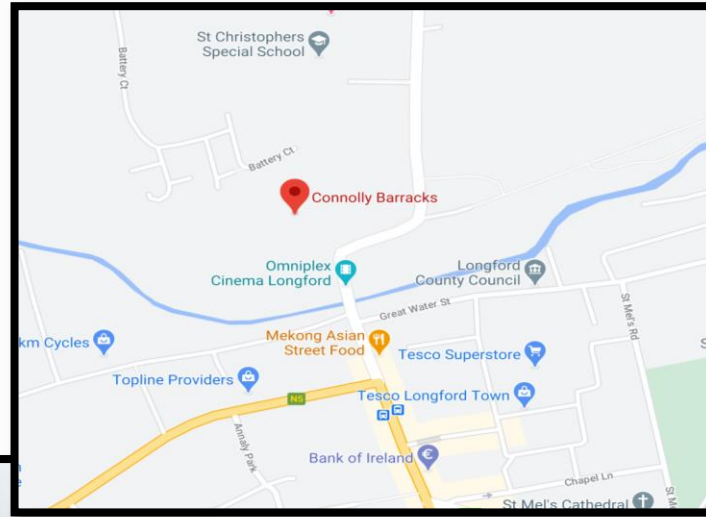
**Support Community Groups**



# Lwetb

*Bord Oideachais agus Oiliúna  
an Longfoirt agus na hIarmhí*  
Longford and Westmeath  
Education and Training Board

## Project Location:



Bríomhar | Ilchineálach | Nuálach  
Dynamic | Diverse | Innovative

## Project ambition:

The renovation of an existing building on the LWETB Longford Campus into a **Further Education & Training Digital Learning Hub** for learners in the wider Midland region, it will provide:

- An **online test centre**, The online test centre has the potential to provide thousands of certification options for learners in Further Education and Training areas such Computer Networking, Software development, Lean Systems - 6 Sigma and Engineering related sectors.



**lwetb**

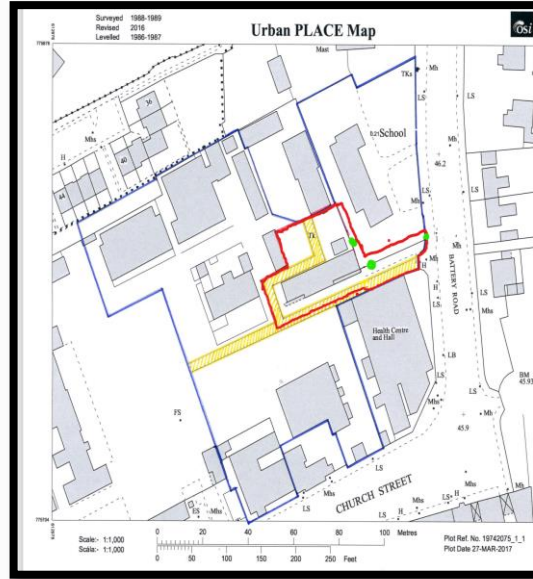
*Bord Oideachais agus Oiliúna  
an Longfoirt agus na hIarmhí*  
Longford and Westmeath  
Education and Training Board

## Project ambition: (cont.)

- **Audio visual facilities** and shared learning spaces for **up-skilling and re-skilling programmes** with traditional tutor classroom and online support.
- **Practical workshops** which are incorporated into the design to facilitate the delivery of programmes which require demonstration areas for practical skills such as energy conservation, construction and horticulture in keeping with the ethos of Just Transition.



# Images and Maps of the Project:







**Lwetb**

*Bord Oideachais agus Oiliúna  
an Longfoirt agus na hIarmhí*  
Longford and Westmeath  
Education and Training Board

## Images and Maps of the Project:



Bríomhar | Ilchineálach | Nuálach  
Dynamic | Diverse | Innovative



**Lwetb**

Bord Oideachais agus Oiliúna  
an Longfoirt agus na hIarmhí  
Longford and Westmeath  
Education and Training Board

# Existing General Arrangements, of the Project.



Bríomhar | Ilchineálach | Nuálach  
Dynamic | Diverse | Innovative



**lwetb**

*Bord Oideachais agus Oiliúna  
an Longfoirt agus na hIarmhí*  
Longford and Westmeath  
Education and Training Board

## Project Success - KPIs and Outcomes.

KPIs	Outcomes
<b>Educational Facilities:</b>	<b>New and enhanced Education facilities and Training provision for all citizens.</b>
<b>Number of jobs created – direct and indirect:</b>	<b>15-20</b>
<b>Number of enterprises supported – direct and indirect:</b>	<b>100 approx. Will continue to increase.</b>
<b>Amount of additional revenue generated in the region as a result of this project:</b>	<b>While difficult to estimate there are direct and indirect revenue benefits to a project of this type which could amount to hundreds of thousands of Euro.</b>
<b>Number of additional training courses and training places provided:</b>	<b>50 additional training courses. 500 training places. Availability of 100s of certification options.</b>
<b>Number of community and voluntary groups/people in affected communities assisted in just transitioning:</b>	<b>All community and voluntary groups/people in affected communities can be assisted including those in just transition by what the project will offer. LWETB already provides assistance using its many interventions and services and will have an increased offering available to groups and people in affected communities.</b>



**Lwetb**

Bord Oideachais agus Oiliúna  
an Longfoirt agus na hIarmhí  
Longford and Westmeath  
Education and Training Board

# Proposed General Arrangements.

(currently under review)



Bríomhar | Ilchineálach | Nuálach  
Dynamic | Diverse | Innovative

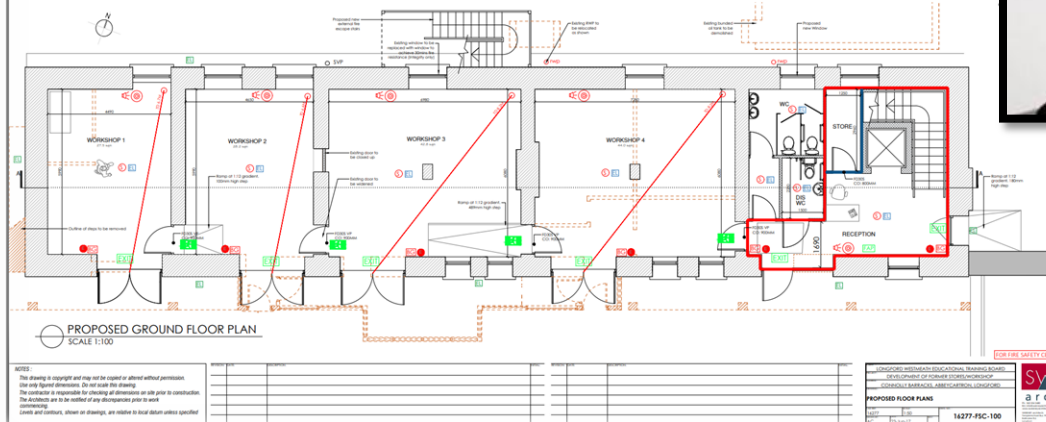
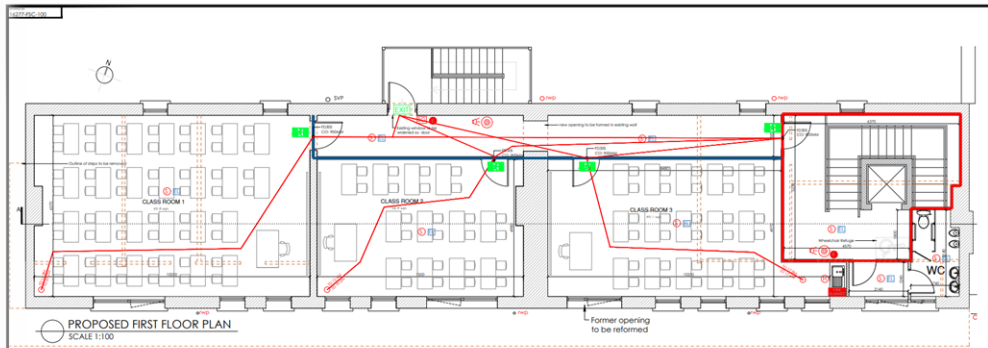




# Lwethb

Bord Oideachais agus Oiliúna  
an Longfoirt agus na hIarmhí  
Longford and Westmeath  
Education and Training Board

## Proposed General Arrangements. (currently under review)



Bríomhar | Ilchineálach | Nuálach  
Dynamic | Diverse | Innovative

## 5 Key Milestones - project Delivery

- 1 - **Preliminary Design** (Assessment of site and initial scheme review) (week 1-6)
- 2 - **Developed Design** (Week 6-21)
  - (a) (to a stage where project is cost planned and prepared for statutory approvals)
  - (b) (planning permissions and preparation of tender documentation)
- 3 - **Tender Action** (including appointment of Contractor) (Week 21-28)
- 4 - **Construction** (including Contract Administration) (week 28-65)
- 5 - **Handover and Final Account** (including Defects Liability Period) (week 65-67)

As per Technical Guidance Document TGD-007 Design Team Procedures for Small Works 5th Edition, April 2016.





**Lwetb**

*Bord Oideachais agus Oiliúna  
an Longfoirt agus na hIarmhí*  
Longford and Westmeath  
Education and Training Board

## Further Education and Training Services:

### Adult Literacy:

- Adult Learning
- ITABE
- ESOL
- DEIS
- Skills for Work
- Family Learning

### Back To Education Initiative (BTEI):

- Community BTEI
- Community Education

### Vocational Training Opportunities Scheme

### Youthreach

### Bridging and Foundation Training

### Traineeships

### Specific Skills Training

### Blended Training

### Apprenticeship

### Evening Training

### Community Training:

- Community Training Centres
- Local Training Initiatives
- Specialist Training Providers
- Justice Workshop

### Services to Business/Employer

### Engagement

- Apprenticeship Services
- Skills to Advance

### FET Adult Career Guidance

### FET Recruitment Service

### FET TEL/PD Services

### FET Quality Assurance

Young Workforce  
Music Generation

Bríomhar | Ilchineálach | Nuálach

Dynamic | Diverse | Innovative



***Lw*etb**

*Bord Oideachais agus Oiliúna  
an Longfoirt agus na hIarmhí*  
Longford and Westmeath  
Education and Training Board

*Thank You*

Bríomhar | Ilchineálach | Nuálach  
Dynamic | Diverse | Innovative