

Community Led Just Transition North Tipperary



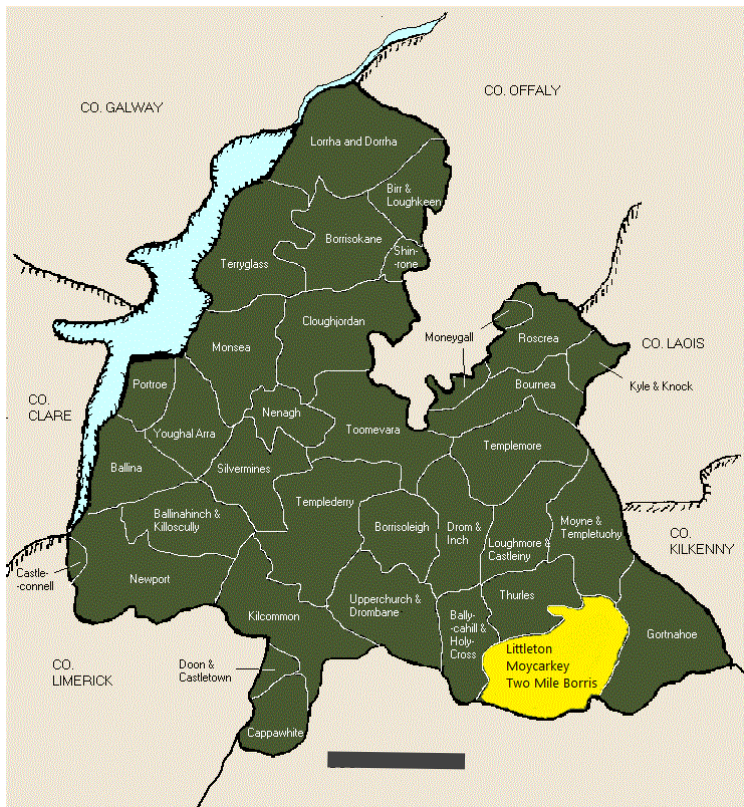
Overview

This 'Community-led Just Transition North Tipperary' project aims to mobilise community-led energy retrofit in communities around Littleton, affected by Peat Plant Closures.

To address the impact of Peat Factory Closure and Social Deprivation, Energy Communities Tipperary Cooperative CLG (ECTC), teamed up with Littleton Development Association CLG. and Ballingarry (Thurles) Community Development CLG. for support under the Just Transition Fund, overseen by the Department of the Environment, Climate and Communications.



Parishes of County Tipperary - project areas highlighted



Parishes of north Tipperary



Parishes of south Tipperary



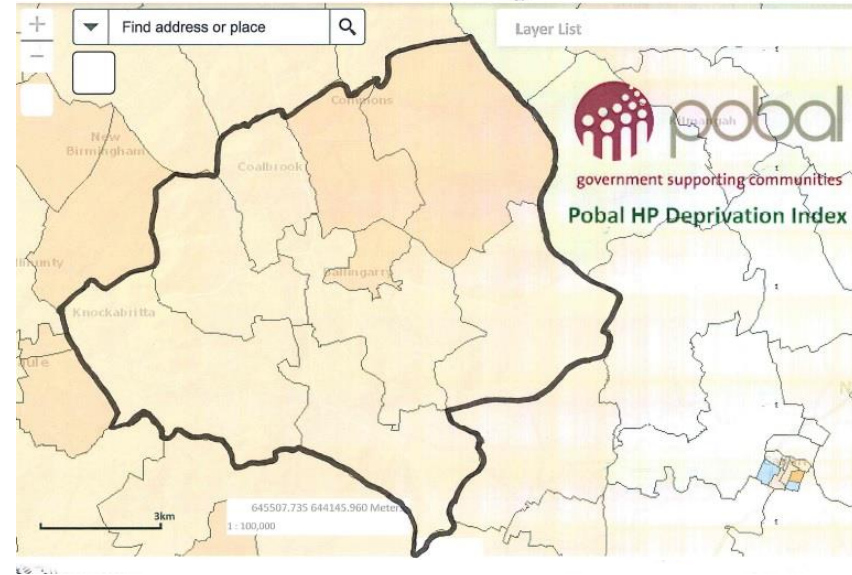
Ballingarry

Ballingarry

- Ballingarry is a rural area in South Tipperary on the Kilkenny border
- Approximately 1500 inhabitants
- Described by Pobal as disadvantaged/marginally disadvantaged in it's deprivation index
- Incredible community spirit when it is harnessed with strong community organisations, GAA, Tidy Towns, Community Centre, Three Primary Schools and Post Primary School

Profile of Ballingarry Community Development CLG

- Established in 2003
- Run a successful purpose built community childcare facility
- Office services, hot desking, enterprise space rental
- Operate the CE Scheme for Ballingarry, The Commons, Killenaule, Mullinahone, Drangan, Cloneen and Moyglass
- Work with local clubs/organisations to access much need funding opportunities
- Legal entity to facilitate local infrastructural projects, (e.g. playground, local historical corner)



PROJECT PARTNER 2



Littleton

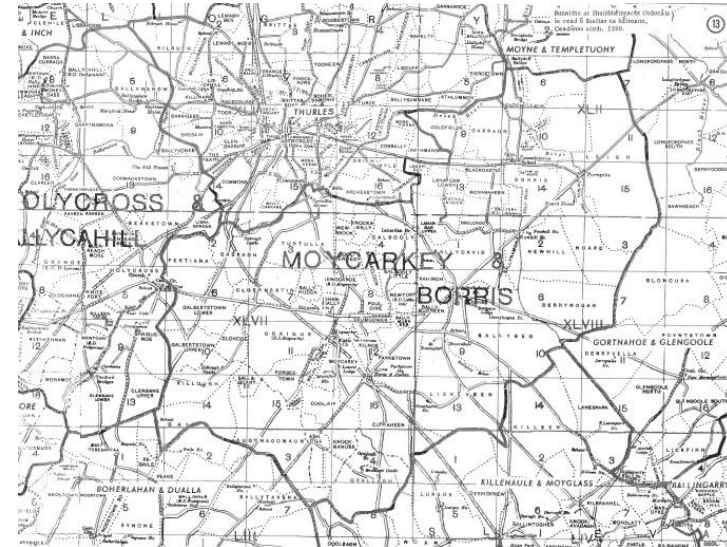


Littleton Development
Association CLG

- Littleton is in the parish of Moycarkey Borris which has a population of approx 2500 inhabitants.
- The closure of Littleton Peat Factory in 2018 saw the loss of 125 jobs, 69 permanent jobs in the factory and 56 peat harvesting jobs.
- County Tipperary Local Economic & Community Plan 2015-2020, Littleton was highlighted as an area of high youth unemployment.
- The Pobal Deprivation Index 2016 identifies Littleton village as 'Very Disadvantaged' with the surrounding areas ranging from 'marginally disadvantaged' to 'disadvantaged'.
- Houses in this area have a very low BER rating according to the SEAI BER map
- There are 4 Primary schools, 4 churches, Community, Athletics, Soccer, and GAA facilities.

Littleton Development Association CLG

- Littleton Development Association CLG. was incorporated in 2009 to provide, promote and protect social and community development and any other related activities
- Developed Community and Sports Centre which is available for family, social, sporting, educational and business events.





Energy Communities Tipperary Cooperative CLG Innovation

- A pioneer in Community-led Retrofit & lead member of the RESCoop.eu Working Group on Citizen-Led Renovation
- Using Energy Efficiency and Generation as a Tool for Local Development.

Governance

Community-led, Not-for-profit cooperative with volunteer directors from member local community groups.

Areas of Activity

- Home insulation upgrade and retrofitting organisation.
- Exploring opportunities for community-owned renewable energy.

What Community Energy Action can achieve 2010-2021

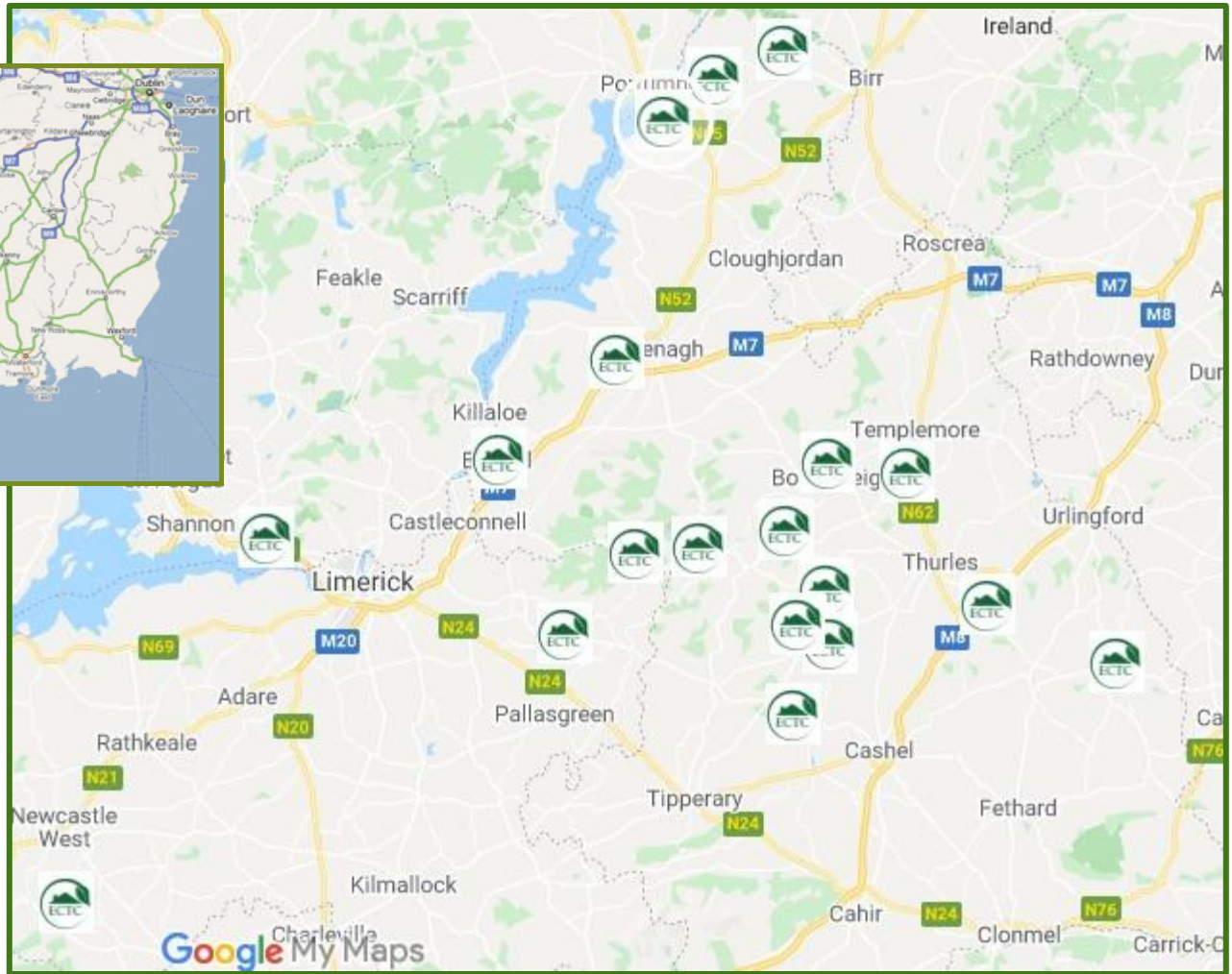
From:

a conversation
in Drombane
Village Hall

To:

set up of Energy
Communities Tipperary
Cooperative (ECTC)
REPRESENTING
14 community Energy
Teams

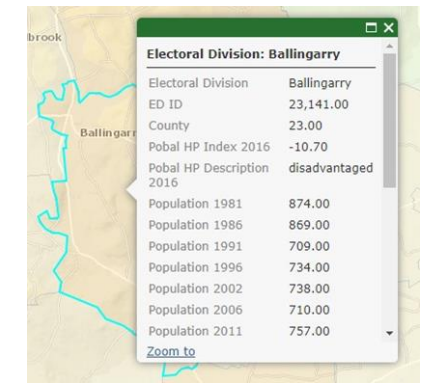
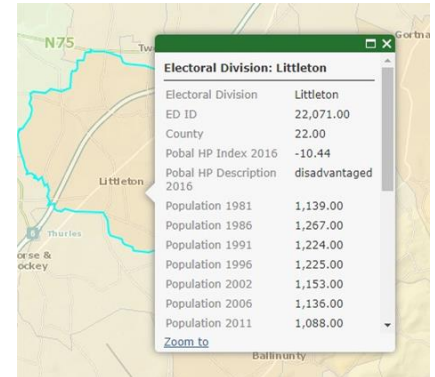
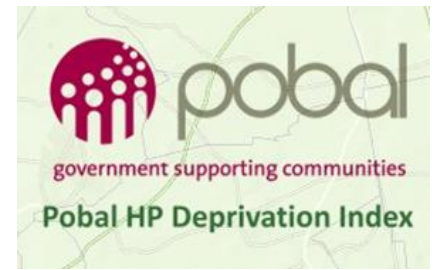
- ▶ **€10.2 million INVESTMENT in rural communities**
- ▶ **840 homes and 25 Community buildings upgraded**
- ▶ **8.8 GWh of energy saved**



***A cooperative of
community groups.
Started in Drombane
and was replicated in
other communities
which led to
formation of ECTC***

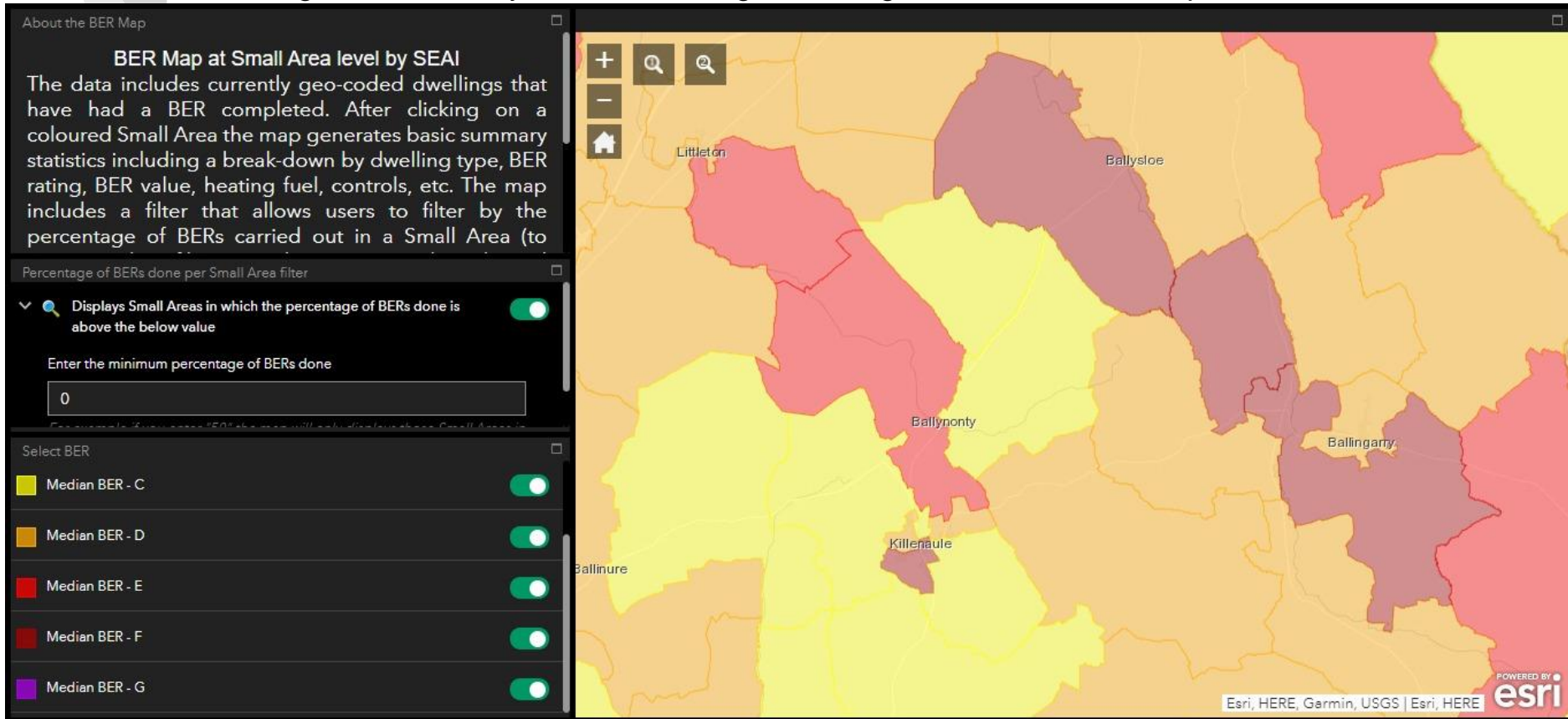
Unemployment & Deprivation

- The **closure of Littleton Peat Factory** in 2018 saw the **loss of 125 jobs**, 69 permanent jobs in the factory and 56 peat harvesting jobs. Many local businesses have suffered as a result of these job losses.
- Before the closure of the factory, in the County Tipperary Local Economic & Community Plan 2015-2020, Littleton was already highlighted as an area of **high youth unemployment** while a cluster around Ballingarry/Killenaule were identified as areas of **high unemployment**.
- The **Pobal Deprivation Index** 2016 identifies Littleton village as **‘Very Disadvantaged’** with the surrounding areas ranging from **‘marginally disadvantaged’** to **‘disadvantaged’**.



Building Energy Ratings

Houses in this region have a very low BER Rating according to the SEAI BER Map



Aims of the Community-led Just Transition Project

To mitigate the effects of the closure of the Bord na Móna local Peat Plant, Energy Communities Tipperary Cooperative CLG (ECTC) together with Littleton Development Association CLG. and Ballingarry (Thurles) Community Development CLG. sought Just Transition Funding for:

- Capacity building, energy auditing and retrofitting of the housing stock in this area
- Funding will leverage approximately €1.8 million over 2.5 years in upgrading local households.
- The retrofitting of 45-60 local housing stock will create warmer, healthier homes, with a particular focus on homes of employees affected by the closure or those on Fuel Allowance
- Supporting 25 jobs per year during the period of the energy project. Through upskilling and targeting, the aim is for much of the labour to be carried out by local trades people.
- Mobilisation of local people to get involved with their local community development associations to lead a local energy transition.
- This will save money for local householders on home heating costs and help to eliminate fuel poverty.
- With less money leaving the area due to lower energy costs, there will be more local wealth to help support existing businesses and other organisations.

Overview of Delivery Plan

The project is being divided into two phases: Phase 1 will involve informing the public, carrying out technical assessments and enlisting households wishing to partake in the scheme. Phase 2 will involve the retrofitting of participating households.

PHASE 1 - Animation and Assessment phase

- Information dissemination and education around the project
- Capacity building, energy auditing of the housing stock in this area
- Mobilisation of local people to get involved with their local community development associations to lead a local energy transition.

PHASE 2 - Works Phase

- The retrofitting of 40+ local housing stock will create warmer, healthier homes, with a particular focus on homes of employees affected by the peat factory closure or those on Fuel Allowance
- Supporting 25 jobs per year during the period of the energy project. Through upskilling and targeting, the aim is for much of the labour to be carried out by local trades people.

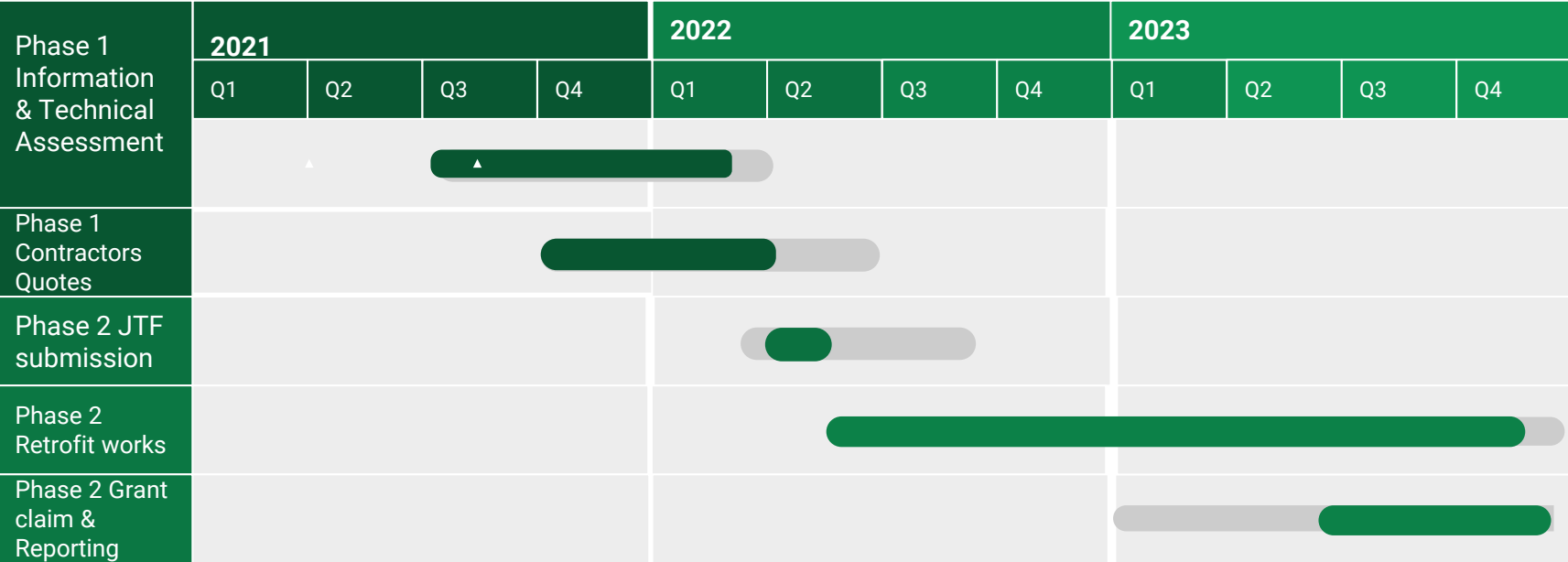
Phase 1 - Animation and Assessment Phase

1. Animation in both Communities.
2. Information evenings *delivered by ECTC, overseen* by local volunteers in each community. Outlining the ambition of the project and the possible funding in phase 2 for retrofitting.
3. Requests for expressions of interest in the project to carry out technical assessments on their homes
4. Analysis of expressions of interest to see if the house is suitable for a technical assessment and grant funding
5. Offer reduce costs on the technical assessment - approx fee €150 per assessment
6. Carry out assessment on appropriate houses
7. Report back to each homeowner on the upgrade measures required on their home to a B2 pathway.
8. Training with ECTC staff
9. Engage with local contractors to carry out surveys on these house for quotations.
10. Report back to each homeowner with cost of their project along with grant offer avail and look for commitment from homeowner to proceed
11. These houses will then form the bases of our Phase 2 project for JTF

Phase 2 - Works Phase

1. Secure funding for houses proceeding from JTF for phase 2
1. Sign contracts with homeowner and contractors to carry out energy upgrade works
 - HO will pay 100% of cost of works and waiting for the JTF grant to be repaid
1. Monitor and inspect works on site - Inspection reports to SEAI standard will be furnished
1. Draw down funding from JTF and return grant to HO
1. Publish the results of the project on media

Project Timelines



Key Performance Indicators

- ❑ Large turnouts to our information evenings / online webinars
- ❑ Turning our expressions of interest into technical assessments
- ❑ Turning our technical assessment into retrofit jobs
- ❑ Quarterly reporting

