

8 DECENT WORK AND ECONOMIC GROWTH



11 SUSTAINABLE CITIES AND COMMUNITIES



13 CLIMATE ACTION



17 PARTNERSHIPS FOR THE GOALS



GREEN HQ -
CLIMATE ACTION & GREEN
ENTERPRISE CENTRE

A Just Transition Strand 2 Project

About Us



Offaly Local Development CLG (OLDC) is a partnership of agencies and groups representing the community, statutory and private sectors. It is funded by a number of government departments and agencies to deliver a variety of programmes and supports to individuals, communities and businesses in Co. Offaly.

Responsibilities of the Company include the delivery of the Rural Development Programme (RDP) also known as LEADER and the Social Inclusion and Community Activation Programme, known as SICAP. Other initiatives funded by the Department of Employment Affairs and Social Protection and other Departments/Agencies in Ireland and the EU are also delivered by the company.

The Company has formed a partnership with Green Offaly for the purposes of this project and other green community development projects and is represented on the board of Directors of Green Offaly.

For further information on these programmes and supports please visit our website www.offalyldc.ie



Project Overview



Fiesta - Green HQ is a Green Regeneration Project delivered by Offaly Local Development Company in partnership with Green Offaly and The Trench Trust.

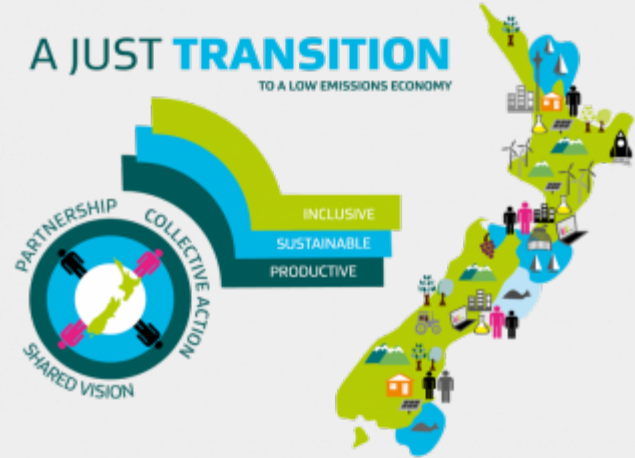
Fiesta is *the place where people and planet connect*. Occupying a central position within Offaly; The Fiesta Building in Kilcormac will become the heart of a 20 year Green Regeneration and Decarbonisation Strategy. It is in close proximity to the current and future eco tourism and green business markets, generated from the rehabilitation and repurposing of the peatlands.

Project Context



In order to meet the ambitious 2050 Global, European and National Decarbonisation legally binding targets, it has been stated that as a nation, Ireland will need to undergo *'a seismic cultural shift'*. The transition to a sustainable future will not be achieved without the buy in of its citizens - the Communities that make up the social and economic fabric of our country.

This is especially true for the Communities of Offaly who find themselves on the frontline of this transition due to our 21% Peatland land bank and vast agricultural heritage.



As the region's Green HQ, the Fiesta will demonstrate what is possible for our transitioning Communities; local regeneration, sustainable pathways, green enterprise and cohesive partnership working to meet local, regional and national targets.

The Fiesta Hall - Gnema & Maple Dance Floor



Green HQ- A Multi Purpose Facility



The Five Components



The conversion of the Fiesta Hall to a 21st Century Green Building will offer multi use, income generating potential aligned to local, regional and national development plans.

Green HQ- Empowering Communities for a Sustainable Future



The building will demonstrate low to zero energy use and be an exemplar of Sustainable Conversion, Waste Management & Renewable Energy



County HQ for the 20 year Green Regeneration Strategy - Transitioning Communities through Climate Change.



Premium Community Development as an example of a 21st Century Rural Future - A Sustainable Regeneration Model



Delivering the County's Decarbonisation Strategy through Community Ownership & Green Social Enterprise Models



Specialised remote working hub for Green and Social Enterprise. Sustainable Conferencing & Business Facilities



Education, Training & Research Programmes for the emerging social, environmental & economic pathways

Project Milestones to date



Date	Project Milestone
6/2020	Application to JTF submitted
9/ 2020	Offaly Local Development Company lead the Project with Green Offaly and JVM Trench Trust as project partners. Working group established.
9/2020	Talks regarding Building Purchase and Lease begin
11/2020	Initiation of purchase of the Fiesta Building by JVM Trench Will Trust
1/2021	Project Plans are revisited, informal consultations with Architects, Engineer, Quantity Surveyor & Planning are begun.
4/2021	Tender for Design Package for a A Multi-disciplined technical consultancy Team created
5/2021	Tender is posted on e-tenders with a 16/6/2021 deadline
6/2021	Final legal arrangements regarding purchase & lease are put in place



June/July

Tenders Evaluated by Working Group

July

Design Team Appointed - Contracts Signed

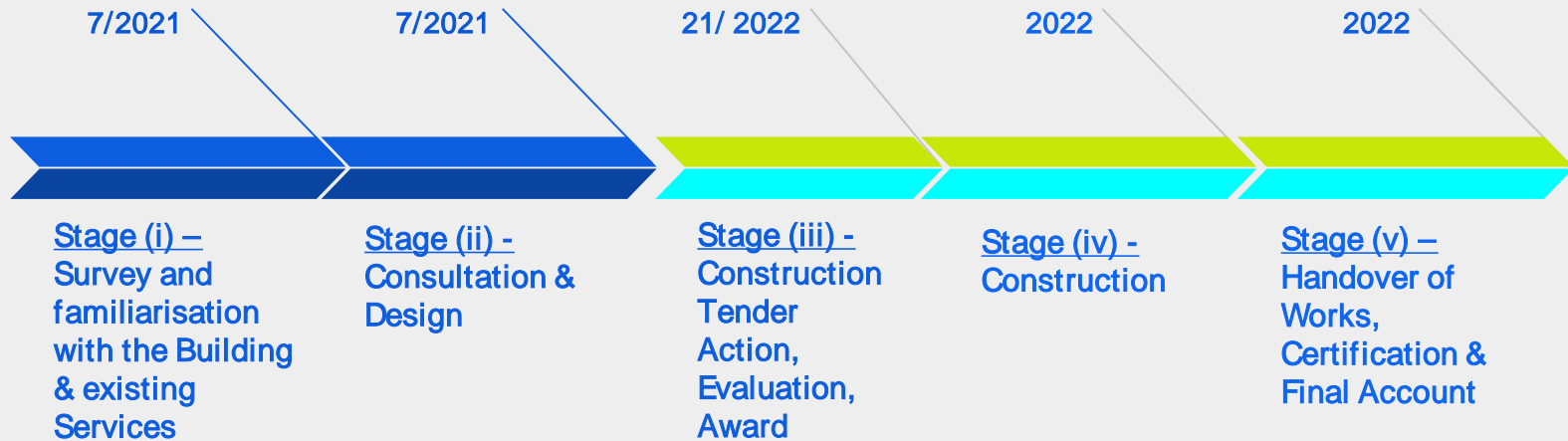
July

Schedule of Works Drawn up - Design Team
take over

Project Stages 2021/2022



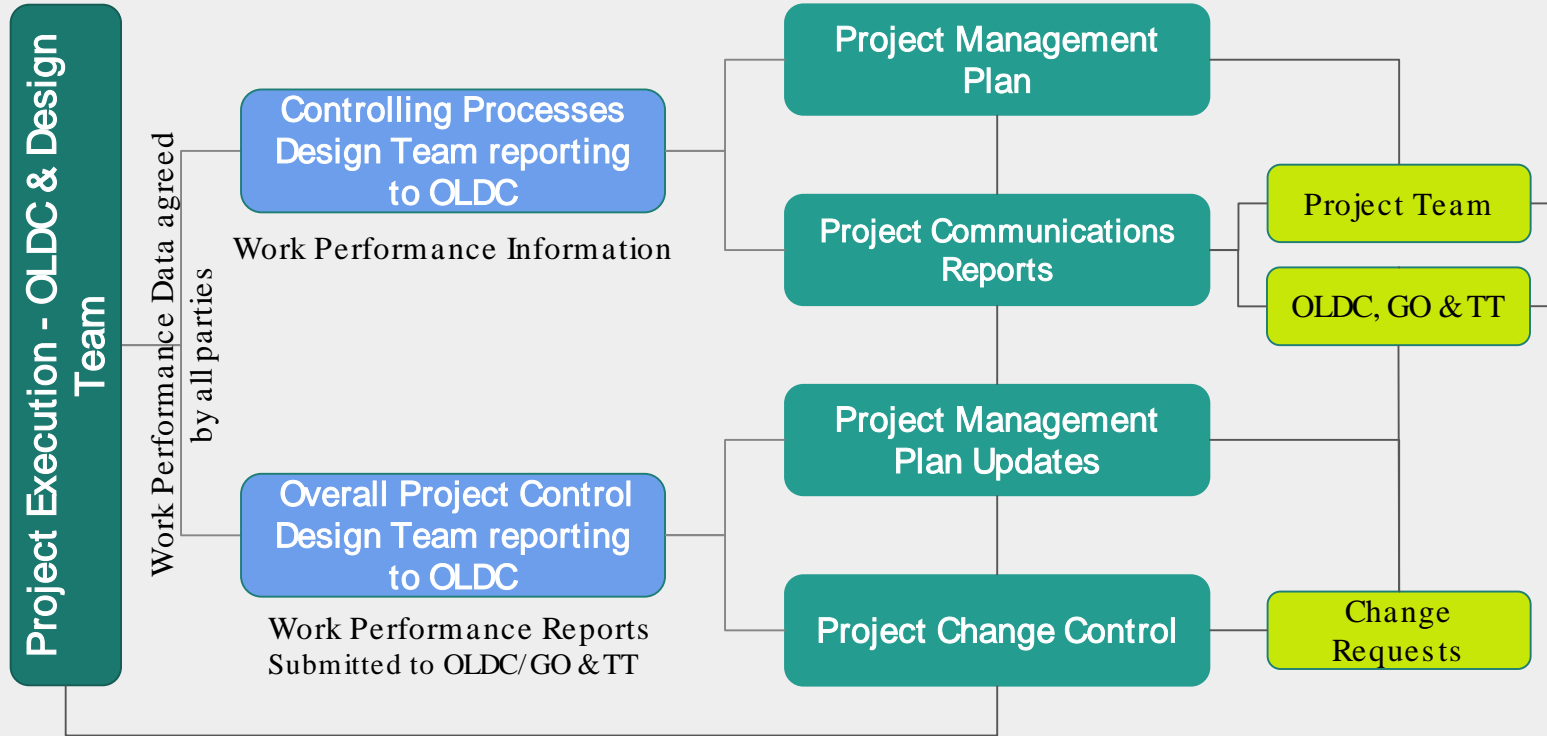
July 2021 - Multi disciplined Design Team work to completion following the outlined tender stages



Project Management Framework



KPIs will be agreed upon by all involved parties *before* initiating the project, and then measured and monitored for the duration of the project.





Project KPIs

Scope of Works as outlined in Tender

Cost

Scheduled Duration

Quality

Engineering Design

Procurement for Construction

Operational Health & Safety

Subcontracts

Construction Works

Main Components & Performance Metrics for Construction, WBS & Reporting

Main Deliverables

Completed Activities

Current Activities

Looking Ahead Activities



The Fiesta will bring together people and organisations from many backgrounds in support of cohesive climate action strategy and the green regeneration of our communities.

Green Offaly was established as Go Sustainable Development Trust a not-for-profit CLG in 2018 in response to the Project Ireland 2040 seminar 'Empowering Communities in the Fight against Climate Change' Its mission is 'The Mainstreaming of Low Carbon & Sustainable Lifestyles through Innovative Green Regeneration Initiatives. The headquarters itself will become a statement of revival and renewal towards a sustainable future.

For more information see www.greenoffaly.ie

JVM Trench Will Trust.

The Trench Trust is a philanthropic trust committed to promoting the development of culture and heritage in the midlands of Ireland.





Brendan O Loughlin C.E.O

Phone: 05793 – 22850

Mobile: 087 2717773

Mail: boloughlin@offalyldc.ie

Website <https://offalyldc.ie/>

Millennium House, Main St, Tullamore, County Offaly
R35 Y7P2

Roisin Lennon

Team Leader – Rural Development

Phone: 05793 – 22850

Mobile: 087 8124986

Mail: rlennon@offalyldc.ie



Offaly Local Development Company