

# MRTT-104: Rhode Green Energy Park

## Lead Applicant:



*Comhairle Chontae Uíbh Fhailí*  
Offaly County Council

## Project Overview

- ▶ **Project Title:** Rhode Green Energy Park
- ▶ **Ref:** MRTT 104, JTF Strand 2 Project
- ▶ **Date:** 16/07/2021
- ▶ **By:** Mark Mahon, Senior Executive Engineer, Edenderry M.D., Offaly Count Council

# MRTT –104: Agenda

- ▶ MRTT –104 Project Overview
- ▶ Background
- ▶ Progress to date
- ▶ Timelines
- ▶ KPIs



**Comhairle Chontae Uíbh Fhailí**  
Offaly County Council

# MRTT 104 - Overview

- ▶ **Rhode Green Energy Park** will be an exemplar project, a leading energy enterprise prototype in the Midlands & Ireland, building on the energy heritage, while pivoting into Green Energy enterprise opportunities as outlined within this presentation.
- ▶ This project consists of two elements:
- ▶ Re-purposing a partially developed Business Park of the site of the former Rhode Power Station into a Green Energy Park, This Park will provide serviced sites for energy enterprise, while also seeking to foster innovation through clustering, with potential for future incubation space.
- ▶ Feasibility Study: Exploring Data Centre Integration with Renewable Energy and Green Hydrogen in the Midlands

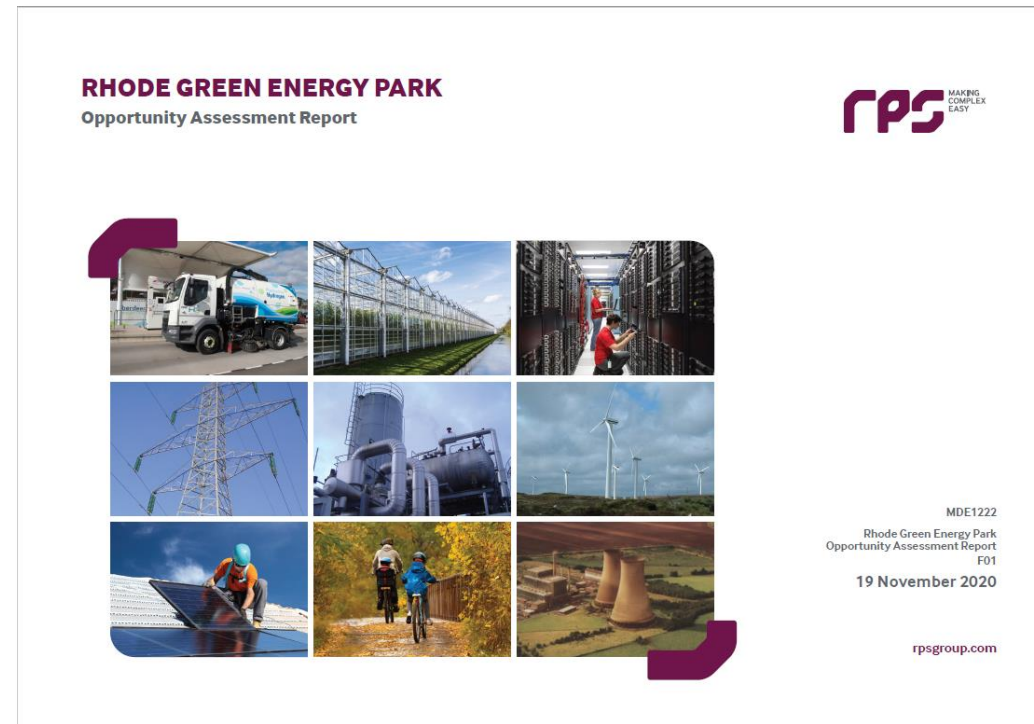
# MRTT –104: Rhode Power Station

- ▶ Rhode – Peat-fired Power Station demolished 2003
- ▶ Rhode Business Park built on the site – funded by ESB as endowment to local community
- ▶ Almost completed just before the Celtic Tiger economy stalled and has not realized its potential
- ▶ Offaly Co. Co. are creating Rhode Green Energy Park as a focal point for the Just Transition in the Midlands – an energy enterprise exemplar

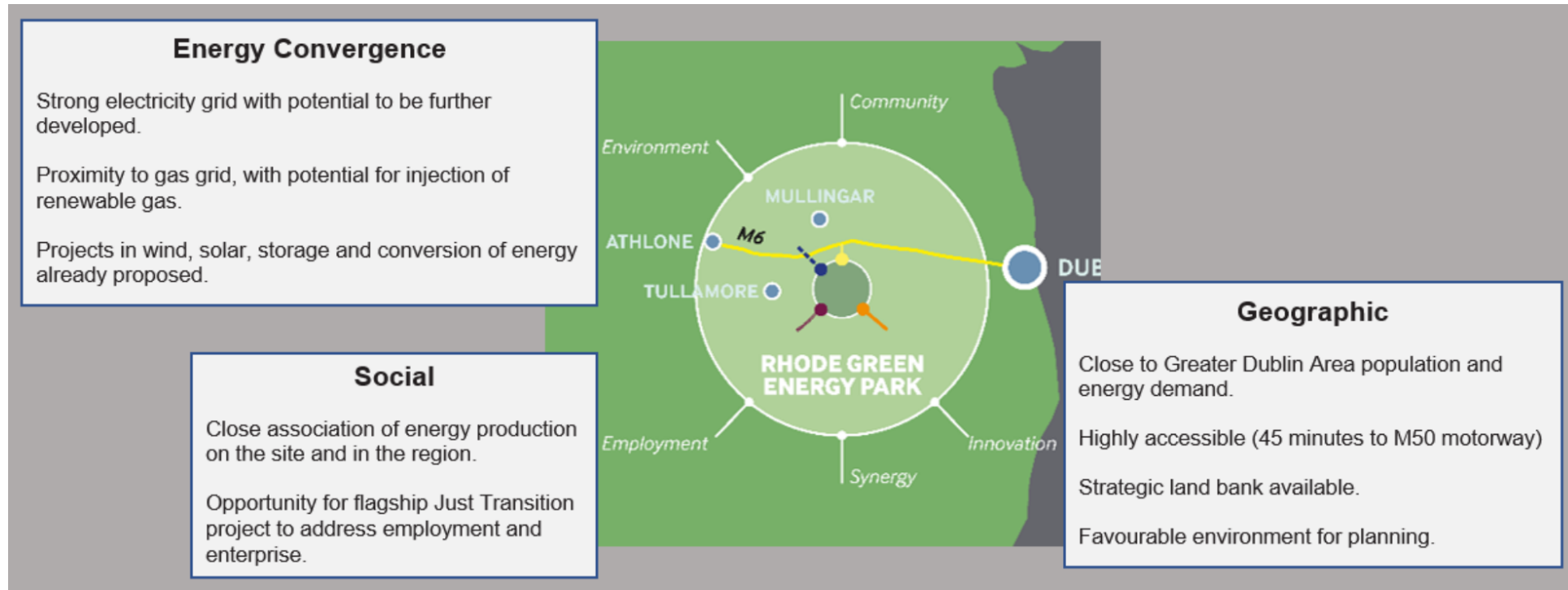


# MRTT –104 Project Development

- ▶ Offaly Co. Co. (OCC) identified the potential of Rhode Green Energy Park as a Green Energy Hub
- ▶ May 2020 – OCC engaged RPS Group to carry out an Opportunity Assessment with a emphasis on green energy and enterprise
- ▶ May 2020 – Just Transition Progress Report published
- ▶ Nov 2020 -RPS Opportunity Assessment Report finalized and published



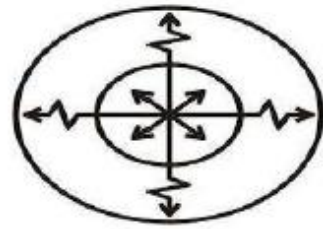
# MRTT –104 Strategic Opportunity



► Why Rhode? The Strategic Opportunity

# MRTT –104: Strands Emerging

- ▶ Strands Emerging from Opportunity Assessment



Hub for energy innovation, systems integration, demonstration.



Eco-industrial park – electricity, heat, resources - multiple industries in a circular economy cluster



National Centre for learning, demonstration, participation in the energy transition.



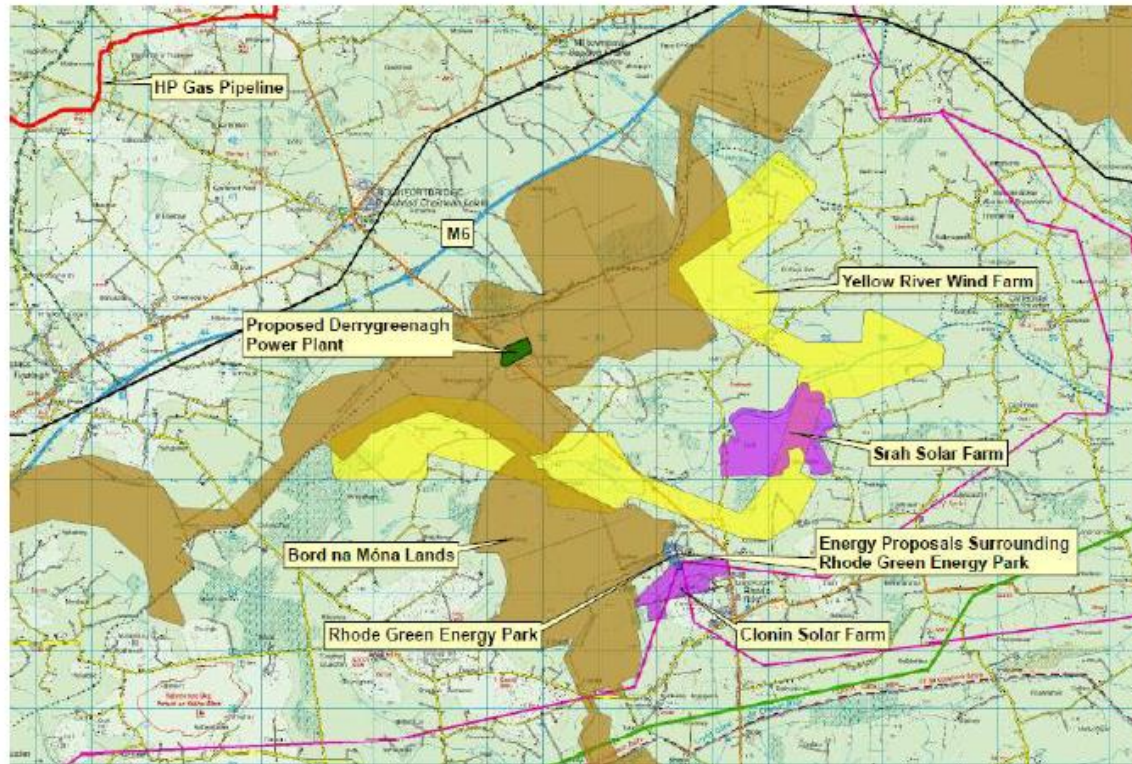
# MRTT –104 Energy Transition in Progress

- ▶ Energy Transition already underway at Rhode





# MRTT –104: Wider Opportunity at Rhode



## Legend

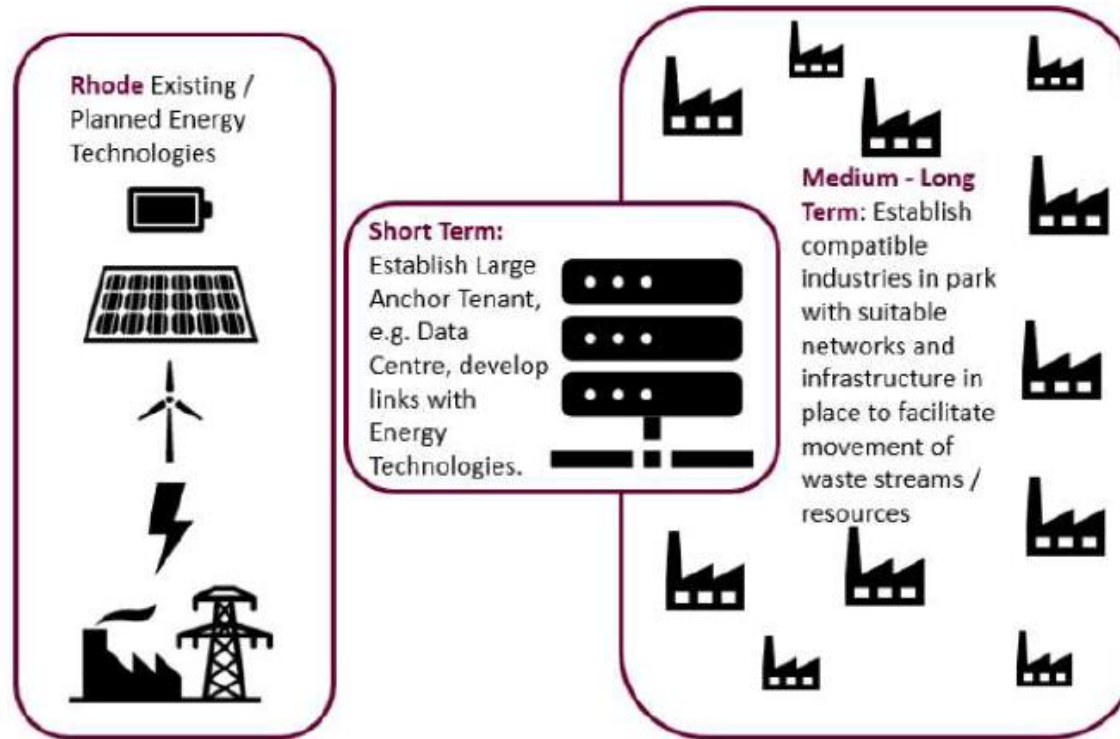
- Proposed Derrygreenagh Power Plant
- Bord na Mona Lands
- Srah Solar Farm
- Clonin Solar Farm
- Yellow River Wind Farm Indicative Boundary
- Energy Proposals Surrounding Rhode Green Energy Park
- ESB HV Network**
  - 110kV Overhead Line
  - 220kV Overhead Line
  - 400kV Overhead Line
- GNI Network**
  - 70 bar High Pressure Gas Transmission Pipeline

- ▶ Opportunities to unlock potential of Bord na Mna land-bank, etc.

# MRTT –104: Data Centre Potential

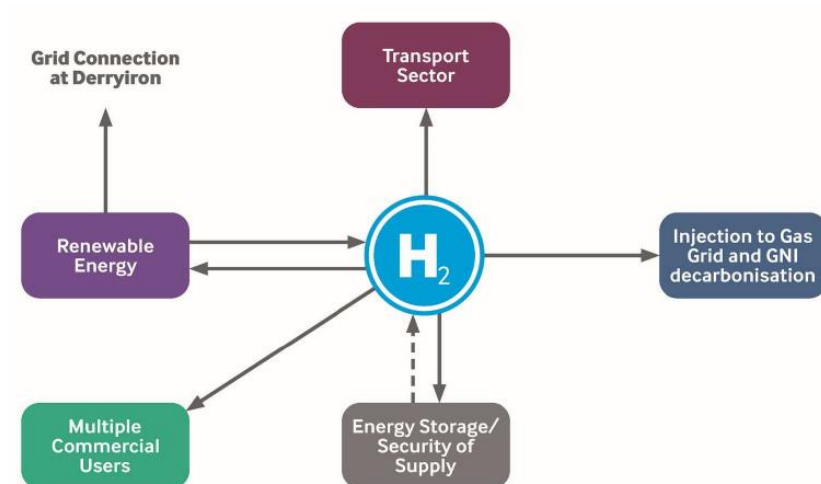
## Compatibility with Rhode

- Available Space
- Data Connectivity
- Electricity Connection
- Back-up Power Options
- Access
- Employment
- Attractive to clean industry
- Green Energy Branding
- Strong Growth Potential



# MRTT –104: Progress to date

- ▶ Opportunity Assessment Report complete
- ▶ Extensive consultation on collaborative opportunities
- ▶ Advancing Gas Networks Ireland Innovation Fund – Hydrogen Feasibility Project, partnering with RPS, SSE, BnM, NUIG, UCD and NODF





# MRTT –104 Project Delivery

- ▶ Where a Letter of Offer was received in July 2021, expected commencement in Q3 2021, with construction activity to commence in September 2021
  - ▶ Infrastructure Works to finish Q4 2022
- ▶ Feasibility Study
  - ▶ Tender Q3 2021
  - ▶ Complete Q4 2021 – Q3 2022



*Partially complete Park infrastructure*

# MRTT –104: KPIs

- ▶ Number of Jobs created during construction – 20 full-time and 15 part-time indirect
- ▶ Following opening of Rhode Green Energy Park, on the basis of 18 sites, and an estimate of 6 no. jobs per site – estimate up to 144 direct jobs.
- ▶ Using the Employment Policy Institute multipliers for scientific services, up to 602 indirect jobs could be created, including 397 induced
- ▶ Number of Enterprises supported: 18 directly, 60 indirectly
- ▶ Success to be measured through Park occupancy and employment generation;
- ▶ This project will also provide important learning for other former Power Station site (West Offaly Power Station, Lough Ree) and for Hydrogen integration in Ireland



Thank you

Mark Mahon  
Senior Executive Engineer  
Offaly County Council