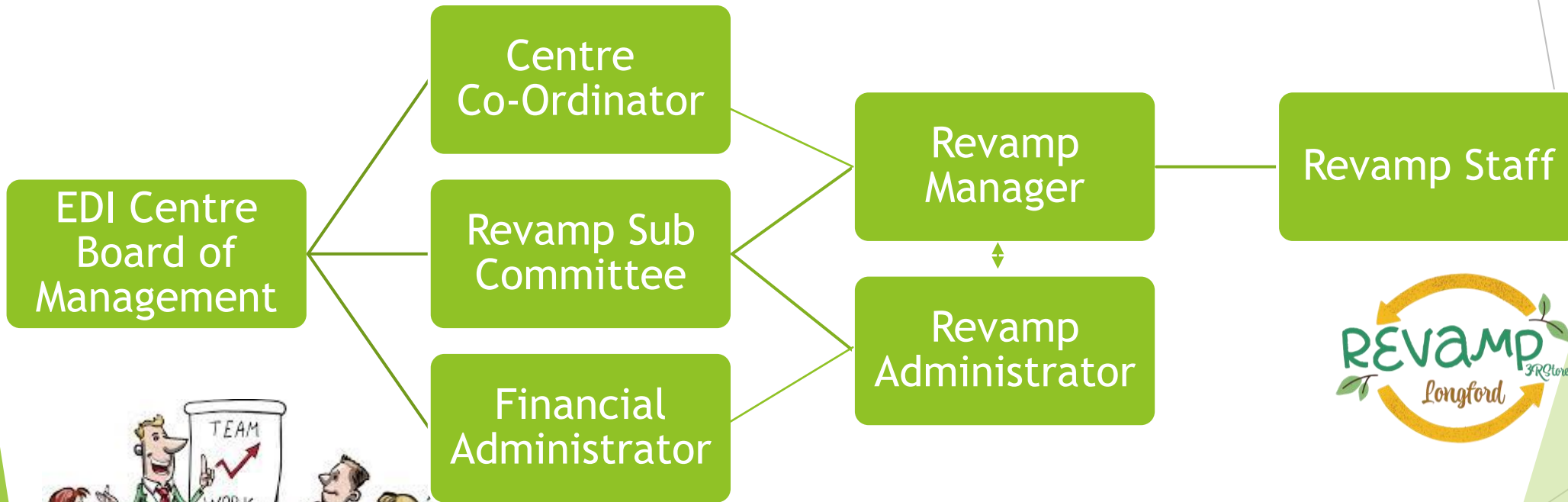


REvamp

3RStore
Longford

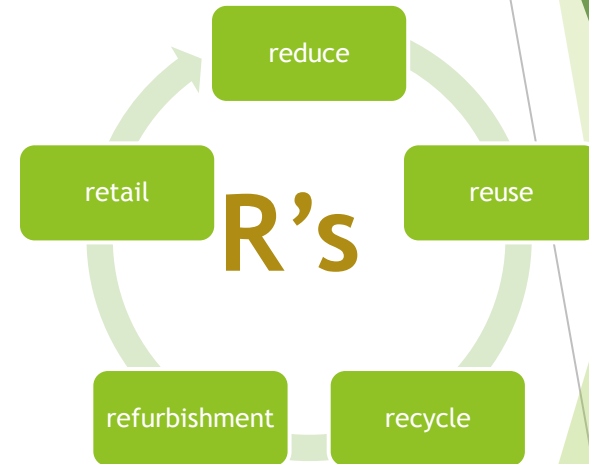
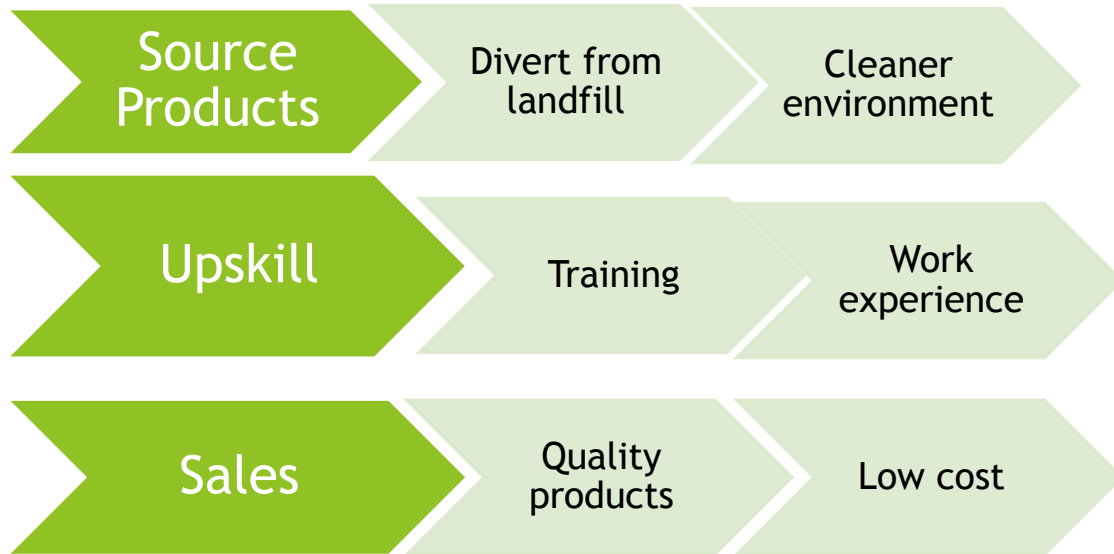


Governance & Management



REVAMP Social Enterprise

Business Model:



Experience & Track Record

Furniture

- Community Good will
- 20 Years experience in furniture recycling business

Services

- Furniture Upcycling & Restoration
- French Polishing
- Upholstery

Employment
/ Training
opportunity

- 7 Full-Time Employees; 5 activation programmes / work placements
- 15 trainees qualified in REVAMP training (average every year)
- Highly skilled Team; Training Workshop & Retail Space
- Masterclass - Upskilling and new skills development
- Addresses unemployment, poverty, inequality & social exclusion.

Generated
Income

- 2019 turnover €216,359
- Business reputation for sales of quality products and services
- Material cost are low - correspondent impact on profit

Environment

- Creating awareness of low carbon emissions
- Addressing waste management – approx. 35,000kg diverted from landfill annually

Economics

- Economic -Availability of low cost quality furniture
- - Creation of Employment



Stakeholders & Partners



Impact Goals

Year 1

- ▶ Establish Paint Hub
- ▶ Pilot programme
- ▶ Recruit project manager & staff
- ▶ Complete process training
- ▶ Mandatory training
- ▶ PR communities Business



Year 2

Consolidate the furniture & paint hubs through further networks & partnerships

Year 3

Continue to develop the Cluster

- ❖ Continue capacity Building & Awareness
- ❖ Construction Waste / Textile Waste



Mission Statement REVAMP Circular Economy

Our mission is to accelerate the transition to a circular economy.

Innovation Strategy

- LEADER for Circular Economy
- First for the Midlands Region
- Consolidates the circular economy cluster in Longford.

Wrapround approach to

- training, education
- upskilling
- creation of direct employment.



JTF – Support & Funding



- Dedicated Development Manager - REVAMP Leadership Focus
- Facilitation for Review Business Plan; Branding, Marketing & PR Consultancy
- Bespoke Training & Upskilling of staff



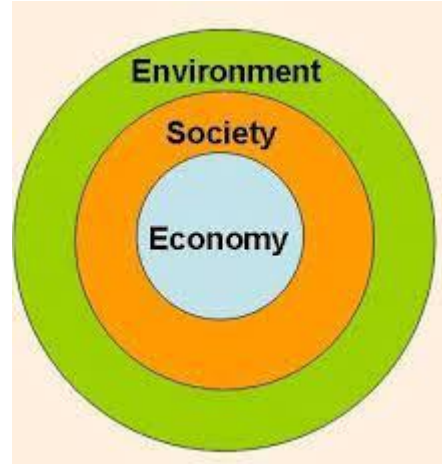
Dedicated Development Manager - Why ?

- To manage & scale - up the Hub development process.
 - ❖ Furniture Refurbishment store
 - ❖ Paint recycling Hub
 - ❖ Homeware – textiles
 - ❖ Wood shredding – construction waste
- To ensure sustainable practices in all aspects of the operation.
- To position Revamp with competitive advantage and brand reputation.
- To achieve an average 5% growth per year.

Introduction of ECO Store



REVAMP - The Bulls Eye Sustainability Model



Economic

- A Viable Social Enterprise with impacts in the community
- Cluster of Circular Economy projects and Eco store.
- Business Leader in Recycling sector- Midlands region
- Focus on Training and Job Creation mission

Societal Health & Wellbeing

- Reinvestment in people and their livelihoods.

Environment & Climate Action

- Contribute to Governments climate action target 2030
- Continue to facilitate education & awareness programmes
- Waste recovery - diversion from landfill



REVAMP - KPI's

- Set & review business performance on an ongoing basis.
- Measure the impact on SROI v's ROI.
- Increase in Profit margins
- Grow Market Share / Demand for products & services
- Understand the markets and competitors
- Marketing & Communications Targets for returning customers and new customers
- Professional networks are growing to establish business partners.
- Staff retention and moral
- Confidence- building to develop and diversify into new products/services





Restored & Upcycled Furniture



We stock a range of bedroom, dining room and living room furniture and can supply individuals, landlords, letting agents and property developers with reasonable priced furniture



REVAMP
RECYCLE
REUSE
REPAIR
REPAIR
REPAIR

Call Us Now on
043 33 48876

or Email
info@revamp3rstore.com
www.facebook.com/revampfurniturestore

MasterTech Business Park, Athlone Road, Longford, Co Longford



Thank you!

