



An Roinn Coimirce Sóisialaí
Department of Social Protection

Quarterly Statistical Report

Quarter 3 2021

Published
Enquiries

28-10-2021
statsunit@welfare.ie



Background

The quarterly statistical report provides summary information on Income and Expenditure as well as total recipients of the main schemes administered by the Department of Social Protection.

The quarters referenced in this report cover the following periods

	Period
Quarter 1	January 1st - March 31st
Quarter 2	April 1st - June 30th
Quarter 3	July 1st - September 30th
Quarter 4	October 1st - December 31st

These statistics may be subject to revision and should be considered as provisional.

Classifications

The schemes in the report are grouped into programmes according to the social need they address. The programmes and their associated main schemes are set out in the table below.

Programme	Schemes	
Pensions	State Pension Contributory Widow(er)'s Contributory Pension	State Pension Non-Contributory
Working Age Income Supports	Jobseeker's Benefit Jobseeker's Benefit for the Self employed Maternity Benefit Paternity Benefit Parent's Benefit	Jobseeker's Allowance One Parent Family Payment Widow(er)'s Non-Contributory Pension Pandemic Unemployment Payment
Illness Disability and Caring	Carer's Benefit Invalidity Pension Illness Benefit	Carer's Allowance Disability Allowance
Children	Child Benefit Working Family Payment	Back to Work Family Dividend

Table of Contents

Background.....	2
Overall Expenditure.....	3
Programme Expenditure.....	4
Pensions.....	5
Working Age Income Supports.....	6
Illness, Disability, and Caring.....	7
Children and Supplementary Payments.....	8
Notes.....	14

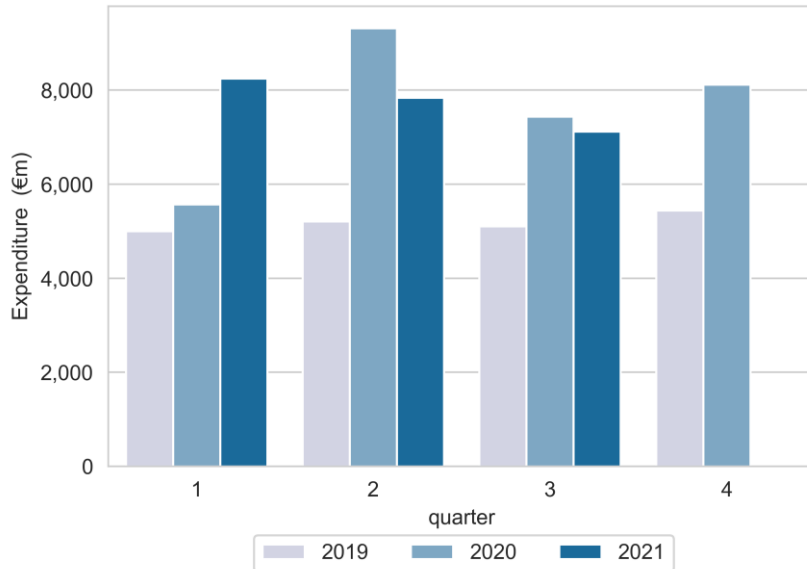
Other Statistics issued by the Department of Social Protection

The Department also produces additional statistical reports which can be viewed at www.gov.ie/dsp/statistics



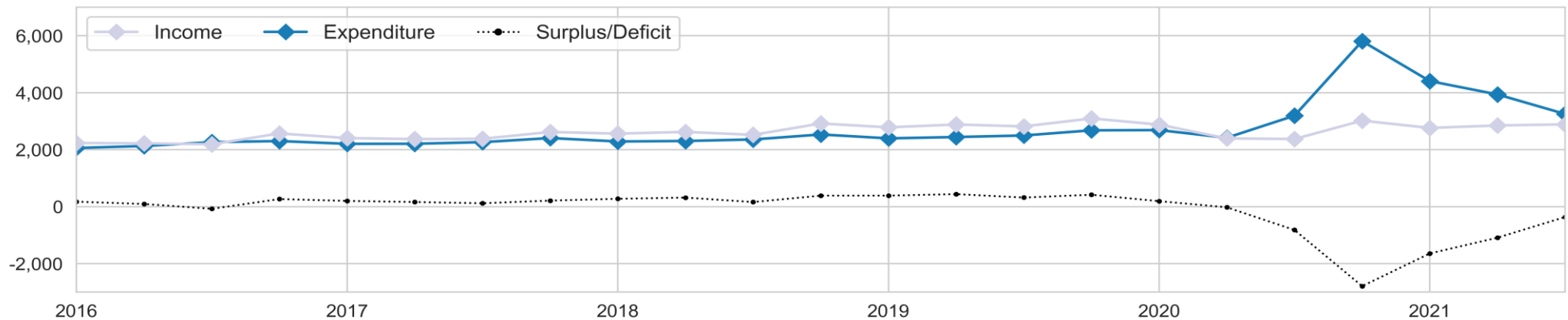
Overall Expenditure

Figure 1: Expenditure (€m) by quarter



- The overall expenditure of the Department of Social Protection to end-September 2021 was €23.2 billion. This was €876 million, or 4%, higher than the same period in 2020.
- The total expenditure for the Department in Quarter 3 2021 was €7.1 billion, around €721 million less compared to Quarter 2 2021, and €319 million less compared to the same quarter in 2020.
- Expenditure on Social Assistance schemes between January and September 2021 was an estimated €11.6 billion, a decrease of -17% or €2.4 billion compared to the same period last year.
- Expenditure on schemes financed from Social Insurance between January and September 2021 was an estimated €11.6 billion, an increase of €3.3 billion or 40% compared to the same period last year due to the Pandemic Unemployment Payment and Enhanced Illness Benefit schemes.
- The Social Insurance Fund (SIF) recorded a current account deficit of €363 million for Quarter 3 2021. As a result, the SIF recorded a deficit of €3.1 billion for the first nine months of 2021, of which €2.6 billion in Exchequer subvention was required.
- On a 12-month rolling basis, from Quarter 4 2020 to Quarter 3 2021, total expenditure of the Department was estimated at €31.3 billion.

Figure 2: Quarterly Social Insurance Fund Income and Expenditure (€m)





Programme Expenditure

- Expenditure on Working Age Income Support payments for the first nine months of 2021 was €6.2 billion, an increase of €66 million (1%) compared to the same period in 2020.
- Spending on Working Age Employment Support schemes was recorded at €4 billion to the end of September 2021, a year-on-year increase of €768 million or 24%. This is due primarily to costs associated with the Employee Wage Subsidy Scheme.
- Child related payments amounted to €1.9 billion in the first nine months of this year, an annual decrease of €39 million (-2%) compared to the same period in 2020.
- Pension payments saw an annual increase of €67 million, or 1%, with expenditure to the end of Quarter 3 2021 estimated at €6.4 billion.
- From January to September 2021, €7.4 billion has been paid on Covid-19-related supports, of which €1.8 billion was expended in the third quarter of 2021.
- The estimated expenditure breakdown of the main Covid-19 related supports for first nine months of 2021 was as follows; Pandemic Unemployment Payment (€3.8 billion), Employment Wage Subsidy Scheme (€3.5 billion), and Enhanced Illness Benefit (€68 million).

Figure 3: Expenditure to date by Social Protection Programme (€): This period and same period last year





Pensions

- Some 687,766 people received payments across the main Pension schemes in Quarter 3 2021, a year-on-year decrease of 3% (19,783) compared to Quarter 3 2020.
- The State Pension Contributory (SPC) scheme recorded a 4.2% year-on-year growth in recipients, from 447,254 to 466,039, while there was minimal annual change in the number of recipients of the State Pension Non-Contributory (SPNC) and Widow(er)'s Contributory Pension (WCP).
- The mean rate of payment for all Pensions schemes was €250 per week. Across the schemes the average weekly payment was €253 for SPC, €230 for SPNC, and €257 for WCP.
- Around 60% of people on the SPC were male, while females accounted for 60% of SPNC recipients and 85% of WCP recipients.

Figure 4: Pension recipients by year and by scheme

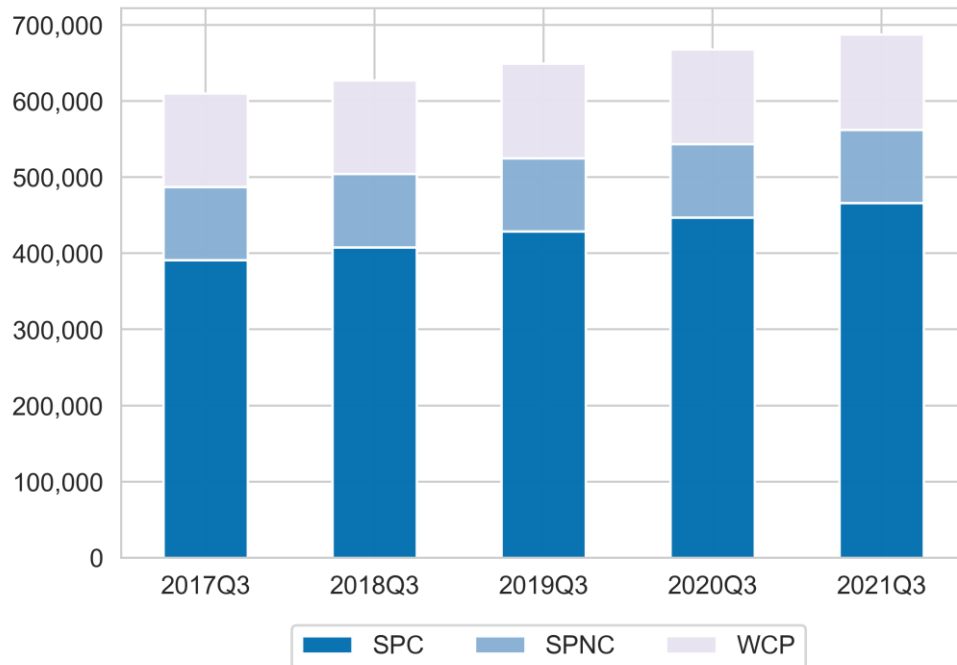
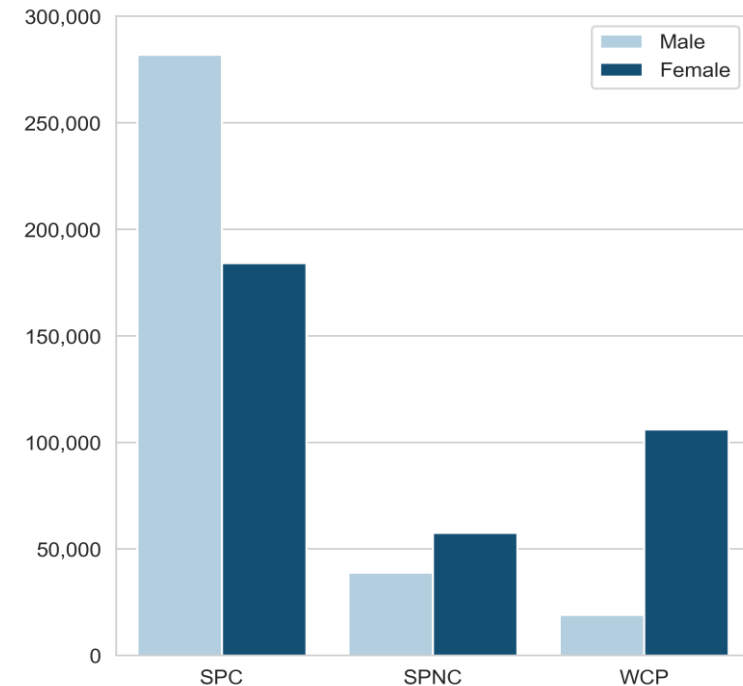


Figure 5: Pension recipients this quarter by sex and by scheme





Working Age Income Supports

- A total of 225,116 people received at least one Pandemic Unemployment Payment (PUP) in Quarter 3 2021. This was 262,503 or 54%, lower than Quarter 2 2021, and down by 50% compared to the 448,618 people who received this payment in Quarter 3 2020.
- The average weekly payment was €293 for PUP, €221 for Jobseeker's Allowance and €201 for Jobseeker's Benefit in Quarter 3 2021.
- The total number of people in receipt of Jobseeker's Benefit across Quarter 3 2021 was 61,931, an annual decrease of 5%, while the numbers availing of Jobseeker's Allowance totalled 157,808, a 7% decrease compared to one year previously.
- There were 29,478 recipients of Maternity Benefit and 6,527 recipients of Paternity Benefit in the quarter, while 17,115 people received payments from the Parent's Benefit scheme.

Figure 6: Jobseeker and Pandemic Unemployment Payment recipients

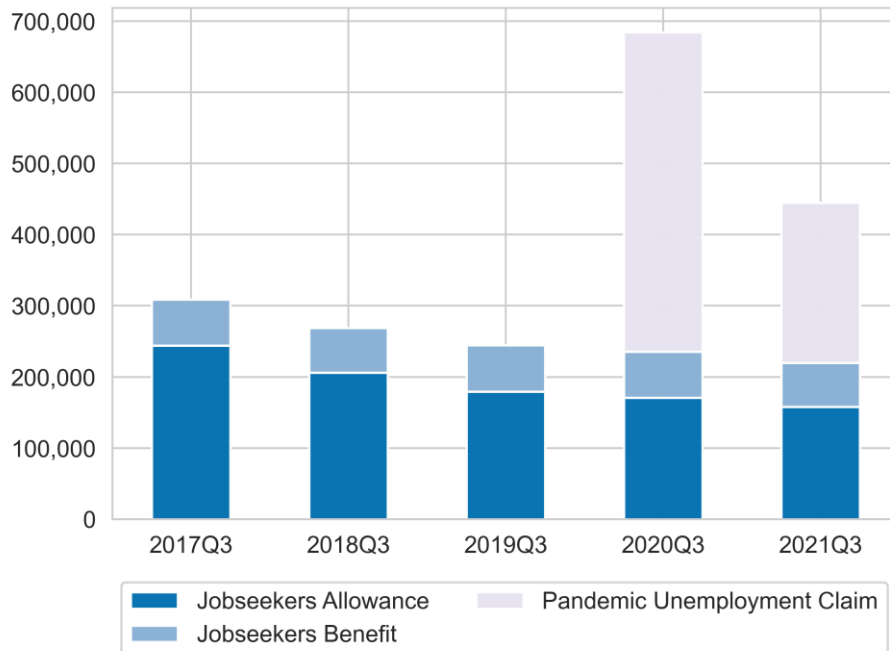
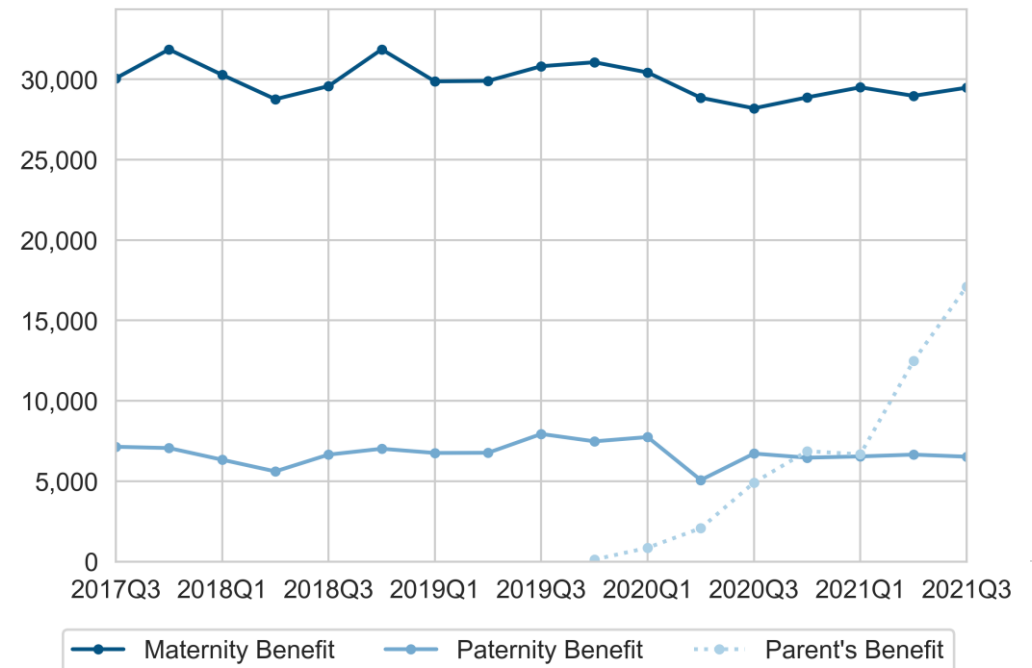


Figure 7: Maternity, Paternity, and Parent's Benefit recipients





Illness, Disability, and Caring

- The number of people paid Illness Benefit in Quarter 3 2021 was 119,810, an increase of 22% from the previous quarter, and up by almost 27% when compared to Quarter 3 2020.
- Of those in receipt of Illness Benefit, 28,814 people received the Enhanced Illness Benefit (EIB) in the last quarter. This was an increase of 15,653 or 119% from the 13,161 people who received EIB in Quarter 2 2021.

- There were 156,829 people in receipt of Disability Allowance in the third quarter of 2021, an increase of 3,273 (2%) on the year before. The average weekly payment received on this scheme was €222.
- The total number of people receiving Carer's payments in Quarter 3 2021 was 97,022, a rise of 2,978 (3%) from Quarter 3 2020. On average, Carer's Allowance recipients received a payment of €194, while Carer's Benefit recipients received a payment of €251.

Figure 8: Trends in recipient numbers – Illness Benefit

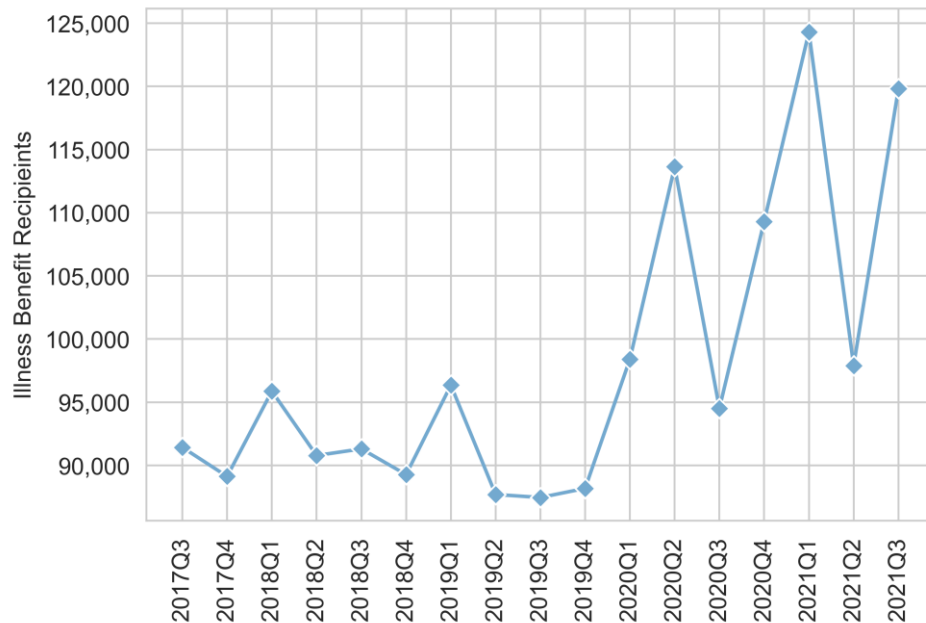
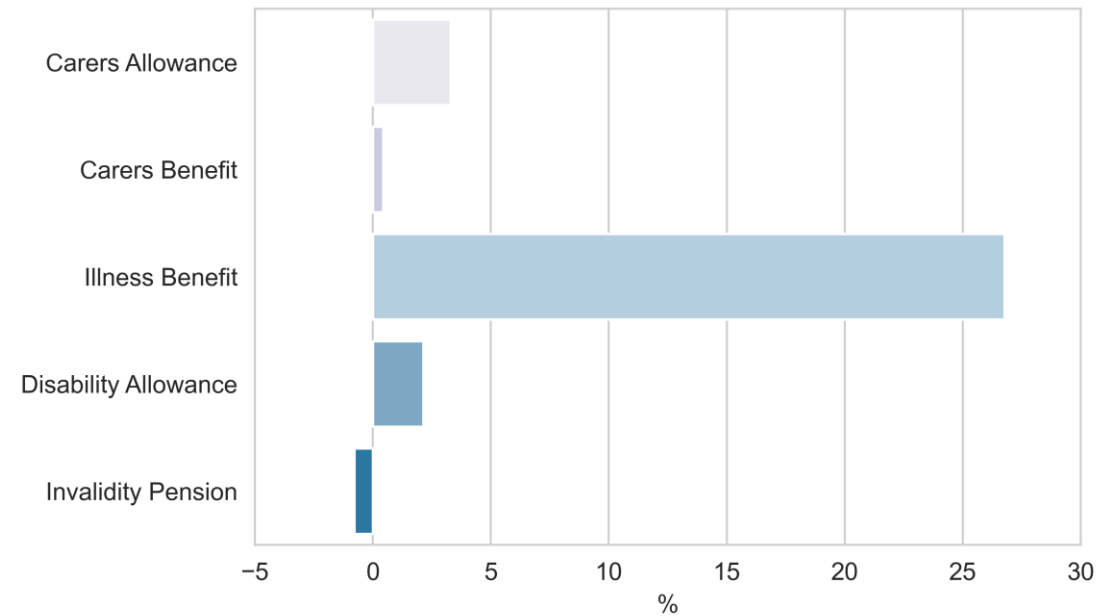


Figure 9: Annual Change (%) in recipient numbers by scheme

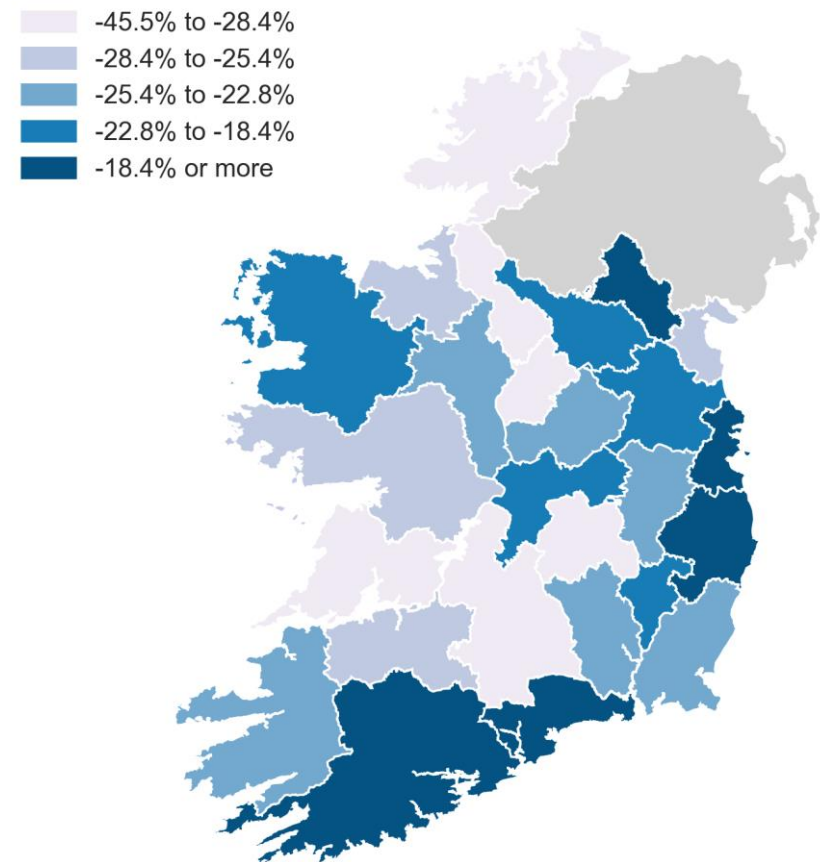




Children and Supplementary Payments

- In the last quarter a total of 637,311 families received Child Benefit payments, down by 5,686 compared to Quarter 3 2020.
- Around 98% (627,278) of recipients of Child Benefit were female, while 2% (10,033) were male.
- Year-on-year, the number of people in receipt of the Working Family Payment decreased by 6% to 49,575. The average payment for this scheme was €141.
- The number of recipients of Rent Supplement in Quarter 3 2021 totalled 16,951, a 19% decrease (-4,048) compared to the third quarter of 2020.
- There were 210,732 people receiving direct payments from the Household Benefits Package^[1] in the quarter, representing a year-on-year increase of 24,613 or 13%.

Figure 10: Annual change (%) in Rent Supplement recipients by county



[1] Includes recipients of cash payments only. Recipients who had payments made directly to their energy supplier as credit against their bills are not included.



Quarterly Statistical Report

Table 1 Estimated Income and Expenditure in the Department of Social Protection (€m)

	Quarterly									Year to Date				
	Q3 2019	Q4 2019	Q1 2020	Q2 2020	Q3 2020	Q4 2020	Q1 2021	Q2 2021	Q3 2021	Jan-Sep 2019	Jan-Sep 2020	Jan-Sep 2021	Change (2021 v 2020)	% Change (2021 v 2020)
Funding Basis														
Social Assistance Expenditure (Vote 37) ^(a)	2,609	2,762	2,889	6,901	4,249	2,313	3,841	3,905	3,871	7,979	14,040	11,617	-2,423	-17%
Social Insurance Fund Expenditure ^(b)	2,497	2,678	2,686	2,417	3,192	5,808	4,406	3,938	3,251	7,337	8,296	11,595	3,299	40%
Social Insurance Fund Income ^(c)	2,816	3,096	2,879	2,394	2,373	3,019	2,763	2,849	2,888	8,483	7,646	8,500	854	11%
Social Insurance Fund Deficit/Surplus ^(c-b)	319	416	193	-23	-819	-2,789	-1,643	-1,089	-363	1,146	-650	-3,095	-2,445	-376%
Exchequer Subvention	0	0	0	0	0	0	1,191	1,094	353	0	0	2,638	2,638	-
Social Protection Programme														
Pensions	2,049	2,199	2,189	1,942	2,242	2,107	2,130	2,138	2,172	6,016	6,373	6,440	67	1%
Working Age Income Supports	834	832	936	3,273	1,887	2,261	2,579	2,154	1,429	2,428	6,096	6,162	66	1%
Working Age Employment Supports	165	186	194	1,855	1,169	1,498	1,332	1,294	1,360	525	3,218	3,986	768	24%
Illness, Disability and Carers	1,075	1,151	1,152	1,281	1,151	1,185	1,119	1,316	1,156	3,355	3,584	3,592	8	0%
Children	689	646	672	637	679	642	655	616	678	1,990	1,988	1,949	-39	-2%
Supplementary & Miscellaneous	140	249	283	167	166	251	283	161	168	538	617	612	-5	-1%
Administration	154	177	148	163	148	176	148	164	160	464	460	472	12	3%
Total Expenditure ^(a+b)	5,106	5,440	5,575	9,318	7,441	8,121	8,247	7,843	7,122	15,316	22,336	23,212	876	4%



Quarterly Statistical Report

Table 2 Total Recipients per Quarter and mean payment amount

	Quarter									Mean Payment €
	Q3 2019	Q4 2019	Q1 2020	Q2 2020	Q3 2020	Q4 2020	Q1 2021	Q2 2021	Q3 2021	Q3 2021
Pensions										
State Pension Contributory	428,717	432,383	438,247	442,457	447,254	451,910	456,128	460,573	466,039	€253
State Pension Non Contributory	96,494	96,220	96,417	96,262	96,347	96,413	96,453	96,333	96,473	€230
Widow(er)'s Contributory Pension	124,075	123,957	124,422	124,285	124,382	124,453	124,786	125,073	125,254	€257
Working Age Income Supports										
Jobseeker's Allowance	179,178	168,066	165,417	153,303	170,548	169,514	157,280	158,189	157,808	€221
Jobseeker's Benefit	65,488	57,795	67,874	63,200	65,057	61,990	55,594	54,776	61,931	€202
Jobseeker's Benefit (Self-Employed)		302	1,144	1,546	1,240	882	573	436	475	€243
Pandemic Unemployment Payment			224,813	734,259	448,618	493,868	570,492	487,619	225,116	€293
Maternity Benefit	30,813	31,060	30,426	28,852	28,196	28,877	29,501	28,971	29,478	€253
Paternity Benefit	7,940	7,482	7,748	5,076	6,722	6,466	6,544	6,657	6,527	€269
Parent's Benefit		129	862	2,083	4,916	6,873	6,675	12,484	17,115	€256
One Parent Family Payment	41,947	41,711	42,124	41,369	41,592	41,940	41,401	41,188	41,791	€263
Widows Non Contributory Pension	1,419	1,392	1,388	1,358	1,344	1,320	1,315	1,288	1,248	€192

Note: Quarterly figures do not represent the numbers and values used by the Department when calculating the Outturn/Estimate for schemes. A yearly calculation is applied to incorporate any seasonal changes and/or adjustments that occur throughout the year on various schemes.



Quarterly Statistical Report

Table 2 Total Recipients per Quarter and mean payment amount (continued)

	Quarter									Mean Payment €
	Q3 2019	Q4 2019	Q1 2020	Q2 2020	Q3 2020	Q4 2020	Q1 2021	Q2 2021	Q3 2021	Q3 2021
Illness Disability and Caring										
Carer's Allowance	84,291	85,800	88,000	89,036	89,716	90,684	91,353	91,648	92,675	€194
Carer's Benefit	3,661	3,735	3,938	4,086	4,328	4,268	4,213	4,168	4,347	€251
Disability Allowance	146,843	148,802	150,851	151,824	153,556	154,260	155,601	156,162	156,829	€222
Illness Benefit	87,460	88,181	98,403	113,632	94,517	109,309	124,303	97,900	119,810	€191
Invalidity Pension	59,415	59,385	59,925	60,148	60,375	60,467	60,690	60,195	59,905	€233
Children										
Back to Work Family Dividend	7,132	6,570	6,116	4,973	4,411	4,123	3,788	3,492	3,447	€69
Child Benefit	634,683	641,102	642,825	642,694	642,997	643,159	640,391	641,714	637,311	€272
Working Family Payment	57,669	57,241	57,257	54,883	52,753	52,100	50,322	48,892	49,575	€141
Supplementary & Miscellaneous										
Rent Supplement	19,489	17,783	16,499	22,401	20,999	20,469	20,872	20,056	16,951	€206
Household Benefits ^[1]	169,180	174,281	177,404	180,557	186,119	194,992	200,524	205,470	210,732	-

Quarterly figures do not represent the numbers and values used by the Department when calculating the Outturn/Estimate for schemes. A yearly calculation is applied to incorporate any seasonal changes and/or adjustments that occur throughout the year on various schemes.

[1] Includes recipients of cash payments only. Recipients who had payments made directly to their energy supplier as credit against their bills are not included.



Quarterly Statistical Report

Table 3 Total recipients of the main Social Protection schemes, by quarter and sex

	Quarter									
	Q3 2020		Q4 2020		Q1 2021		Q2 2021		Q3 2021	
	Males	Females	Males	Females	Males	Females	Males	Females	Males	Females
Pensions										
State Pension Contributory	273,593	173,661	275,776	176,134	277,616	178,512	279,301	181,272	281,841	184,198
State Pension Non Contributory	38,459	57,888	38,570	57,843	38,706	57,747	38,701	57,632	38,870	57,603
Widow(er)'s Contributory Pension	18,793	105,589	18,853	105,600	18,908	105,878	19,053	106,020	19,150	106,104
Working Age Income Supports										
Jobseeker's Allowance	96,175	74,373	95,371	74,143	88,704	68,576	88,263	69,926	86,017	71,791
Jobseeker's Benefit	28,858	36,199	29,344	32,646	26,360	29,234	24,946	29,830	25,560	36,371
Jobseeker's Benefit (Self-Employed)	829	411	572	310	389	184	287	149	247	228
Pandemic Unemployment Payment	231,317	217,301	254,482	239,386	318,201	252,291	267,262	220,357	122,545	102,571
Maternity Benefit		28,196		28,877		29,501		28,971		29,478
Paternity Benefit	6,697	25	6,451	15	6,535	9	6,630	27	6,508	19
Parent's Benefit	1,685	3,231	2,078	4,795	1,736	4,939	2,945	9,539	5,341	11,774
One Parent Family Payment	536	41,056	529	41,411	528	40,873	523	40,665	533	41,258
Widows Non Contributory Pension	205	1,139	203	1,117	203	1,112	197	1,091	189	1,059



Quarterly Statistical Report

Table 3 Total recipients of the main Social Protection schemes, by quarter and sex (continued)

	Quarter									
	Q3 2020		Q4 2020		Q1 2021		Q2 2021		Q3 2021	
	Males	Females	Males	Females	Males	Females	Males	Females	Males	Females
Illness Disability and Caring										
Carer's Allowance	20,990	68,726	21,179	69,505	21,287	70,066	21,257	70,391	21,373	71,302
Carer's Benefit	647	3,681	658	3,610	677	3,536	666	3,502	707	3,640
Disability Allowance	86,686	66,870*	86,950	67,310	87,473	68,128	87,702	68,460	87,950	68,879
Illness Benefit	34,572	59,945	41,476	67,833	49,118	75,185	36,495	61,405	46,999	72,811
Invalidity Pension	25,140	35,235	25,064	35,403	25,079	35,611	24,800	35,395	24,589	35,316
Children										
Back to Work Family Dividend	1,360	3,051	1,219	2,904	1,093	2,695	1,033	2,459	1,028	2,419
Child Benefit	10,673	632,324	10,621	632,538	10,238	630,153	10,291	631,423	10,033	627,278
Working Family Payment	19,937	32,816	19,401	32,699	18,671	31,651	17,924	30,968	17,910	31,665
Supplementary & Miscellaneous										
Rent Supplement	11,044	9,955	10,687	9,782	11,127	9,745	10,674	9,382	8,838	8,113
Household Benefits ^[1]	96,687	89,432	100,837	94,155	103,514	97,010	105,568	99,902	107,872	102,860

*An error relating to the number of Females in receipt of Disability Allowance in Q3 2020 was detected in the Quarterly Statistical Report for Q1 and Q2 2021. This error has been corrected for this release. Open data published by the Department was not affected by this error.

[1] Includes recipients of cash payments only. Recipients who had payments made directly to their energy supplier as credit against their bills are not included.



Notes

Methodology and quality considerations

The expenditure details in this report are based on estimates. The finalised expenditure information can be viewed in the latest Appropriation Accounts for Vote 37¹, or the latest Annual Statistics Report². Note that the estimated expenditure figures in this report may not add up exactly due to rounding.

When comparing to a previous quarter or previous year, the comparison can sometimes be impacted by the number of pay days that fall in a particular quarter. This may account for skews in expenditure and/or recipient totals in certain quarter periods.

The recipient totals were extracted from the Department's administrative systems, and include people who were issued at least one payment for a particular scheme in a given quarter. In the majority of cases the date in which the payment was made reflects the entitlement period .i.e. when the payment was issued the recipient's claim was open. However payments can be issued in respect to different entitlement periods (arrears payments). The figures produced in this report are calculated with reference to the date the payment was issued, and are therefore inclusive of arrears payments. Note that a person can be in receipt of payment for more than one scheme.

The recipient figures quoted in the Annual Statistics report are not directly comparable to the numbers shown in this publication. The Annual Statistics report counts only those awarded and in receipt of payment at a point in time (December 31st) to ensure comparability with a series of statistical reports dating back to 1983.

Glossary of Terms

Recipient: A person receiving at least one Social Welfare payment in a given quarter period.

Social Assistance: payments funded from voted expenditure, which cover people who do not have sufficient PRSI contributions to qualify for the equivalent social insurance payments, or where entitlement to the social insurance payment has expired. These payments are typically means-tested.

Social Insurance Fund: a current account and an investment account managed by the Minister for Social Protection and the Minister for Finance, respectively. The current account consists of monies collected from people in employment, self-employment, and employer contributions. This money is then used to fund social insurance payments.

Open Data

Each report in this series will be available in formats consistent with the Open Data Technical Framework³. Any open data produced by the Department will be accessed through the National Open Data portal at: <https://data.gov.ie/>

Revisions

Revisions may occur as a result of changes in methodology, an update to a series or errors in the original data. Any significant revisions will be footnoted in the report and will describe the reason for the change and its impact on comparability (.i.e. with other schemes or over time).

1. Published by the Office of the Comptroller and Auditor General at: <https://www.audit.gov.ie/en/find-report/publications/appropriation%20accounts/>
2. Available at: <https://www.gov.ie/dsp/statistics>
3. Available at: <https://data.gov.ie/pages/opendatatechnicalframework>