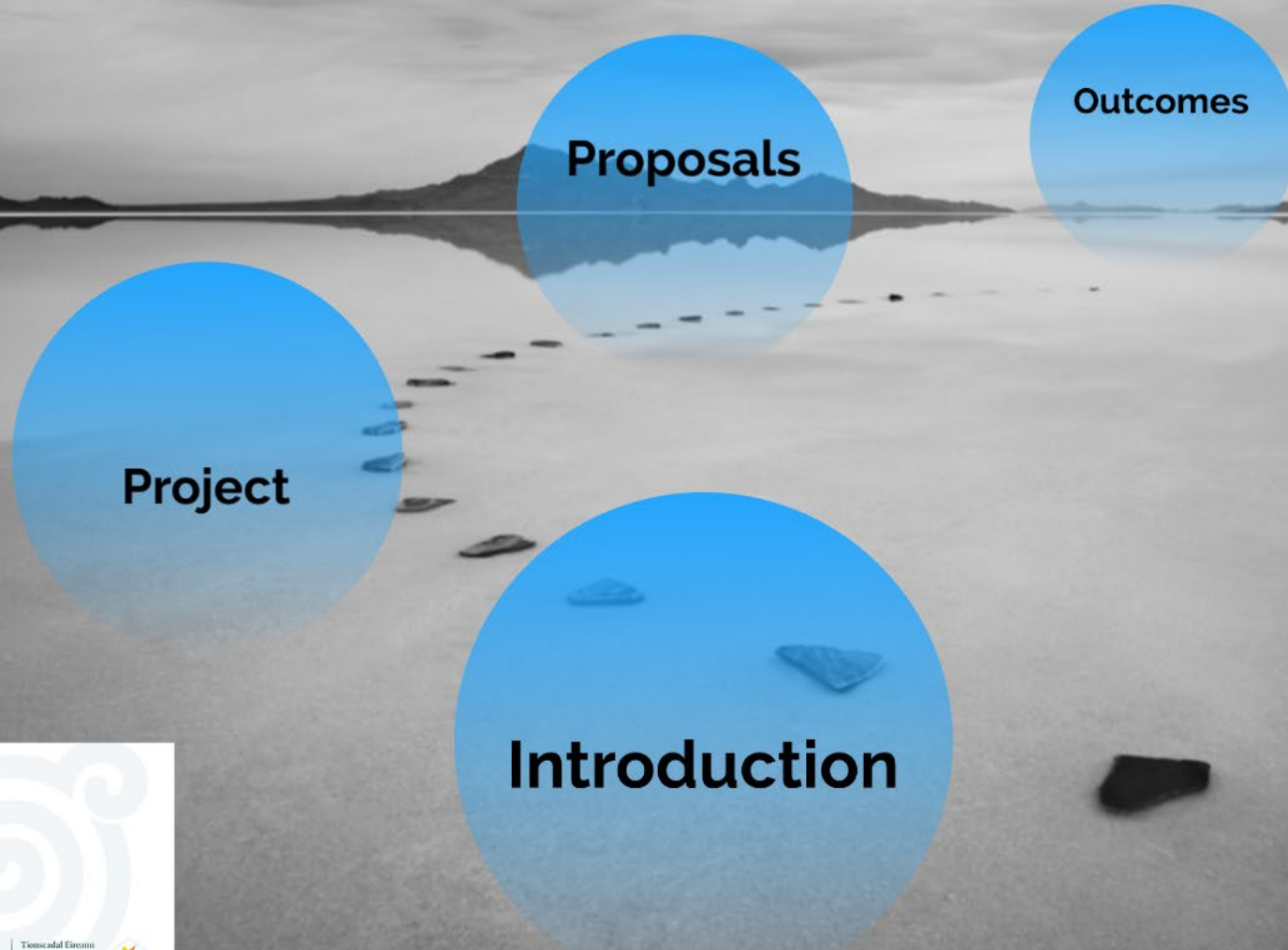


Feasibility Study AD and the Circular Economy



Aoife Moore
Regeneration Section
Longford County Council

AN LONGFORT
REGENERATION

Regeneration
Working together for a vibrant Longford

Rialtas na hÉireann
Government of Ireland

Tionscadal Éireann
Project Ireland
2040

USACI

Lanesboro-Ballyleague

- Straddles Two Counties/Regions
- Lough Ree Power and Bord na Mona - Skillset
- Numerous projects underway - align
- Locational Advantage?



Social

Environmental

Economic

Study Areas

SOCIAL

- **Employment**
- **Inclusion**
- **Utilities**
- **Waste Management**
- **Awareness/responsibility**
- **Cultural**
- **Educational**
- **Community participation**

ENVIRONMENTAL

- **Reduce GHG**
- **Sustainable resource use**
- **Promote biodiversity**
- **Prevent pollution**
- **Target Transport emissions**
- **Replace fossil fuels**
- **Sustainability of agri-sector**

ECONOMIC

- **Energy Source**
- **Waste management**
- **Circular economic benefits**
- **Cluster enterprises**
- **Retain local economic activity**
- **Align with Agri-policy reforms**
- **Carbon and nutrient Management**



Outcomes

Research

**Stakeholder
Consultation**

Feasibility

Synthesis

RESEARCH

- Undertake an investigation into potential suppliers and clients to determine the demand for such a facility and associated fuel supply chains in the vicinity and demand for outputs (Longford, Roscommon, regionally and nationally) utilising existing research in these areas at all levels and primary data sources at national and regional levels.
- Identify the factors associated with success & failures encountered in similar projects developed nationally and internationally.
- Identify potential a in terms of innovation, training, product development, to maximise benefits to the local, regional and national economy and to ensure sustainability of the facility, including potential spin-off enterprises and innovation within the circular economy.

STAKEHOLDER CONSULTATION

- Focused consultation process to include local organisations and representatives from key sectors in the agricultural, energy generation and transportation sectors.
- A consultation plan will be developed to identify the strategically important stakeholders across the community, public bodies, state and semi-state sectors and private enterprise (locally, regionally and nationally)
- A clearly defined and structured consultation process will be designed, implemented and documented at all stages of the feasibility study.
- Consult with key state, semi-state and private operators in the energy, natural resources and commercial arenas, including waste management facilities and report on potential interactions to maximise feasibility, climate action and community gain.

FEASIBILITY

- Determine operating costs and the return on the investment required – Cost Benefit Analysis (CBA) in the context of social and environmental in addition to economic benefits
- Ascertain potential job creation and economic impact of the facility.
- Make recommendations regarding optimum location, scale and focus, including the potential for on-farm satellite facilities.
- Consider climate action potential in the areas of agriculture and transport and energy storage/management of intermittent renewable energy in the context of proximity to existing installations
- Consider the potential for decarbonisation of the transport sector in the context of the logistics industry (CNG, Hydrogen, Biomethane)

SYNTHESIS

Synthesis of final report and outline business plan, including potential governance models to maximise potential for community involvement and gain.

This study will indicate the potential of alternative energy development and associated circular economic benefits to inform existing landowners, including state and semi-state bodies, potential investors and applications to relevant funding streams into the future.

The intended audience is therefore broad, but should focus on the local community to ensure that community gain is paramount as required under the Just Transition process which has funded this investigation.

Timelines

Appointment will be made in May 2021. Interim reports will be due in September and December 2021 and March 2022. Final report due for submission by May 2022.

May 2021
**Appoint
consultants**

December 2021
**Completion of
Feasibility**

September 2021
**Research and
consultation plan**

March 2022
**Synthesis and Draft
Report**

May 2022
Final Report

Contact

regeneration@longfordcoco.ie

aoifem@longfordcoco.ie

