



# SOCIAL ENTERPRISE EXCHANGE

A Just Transition Project

December 2021





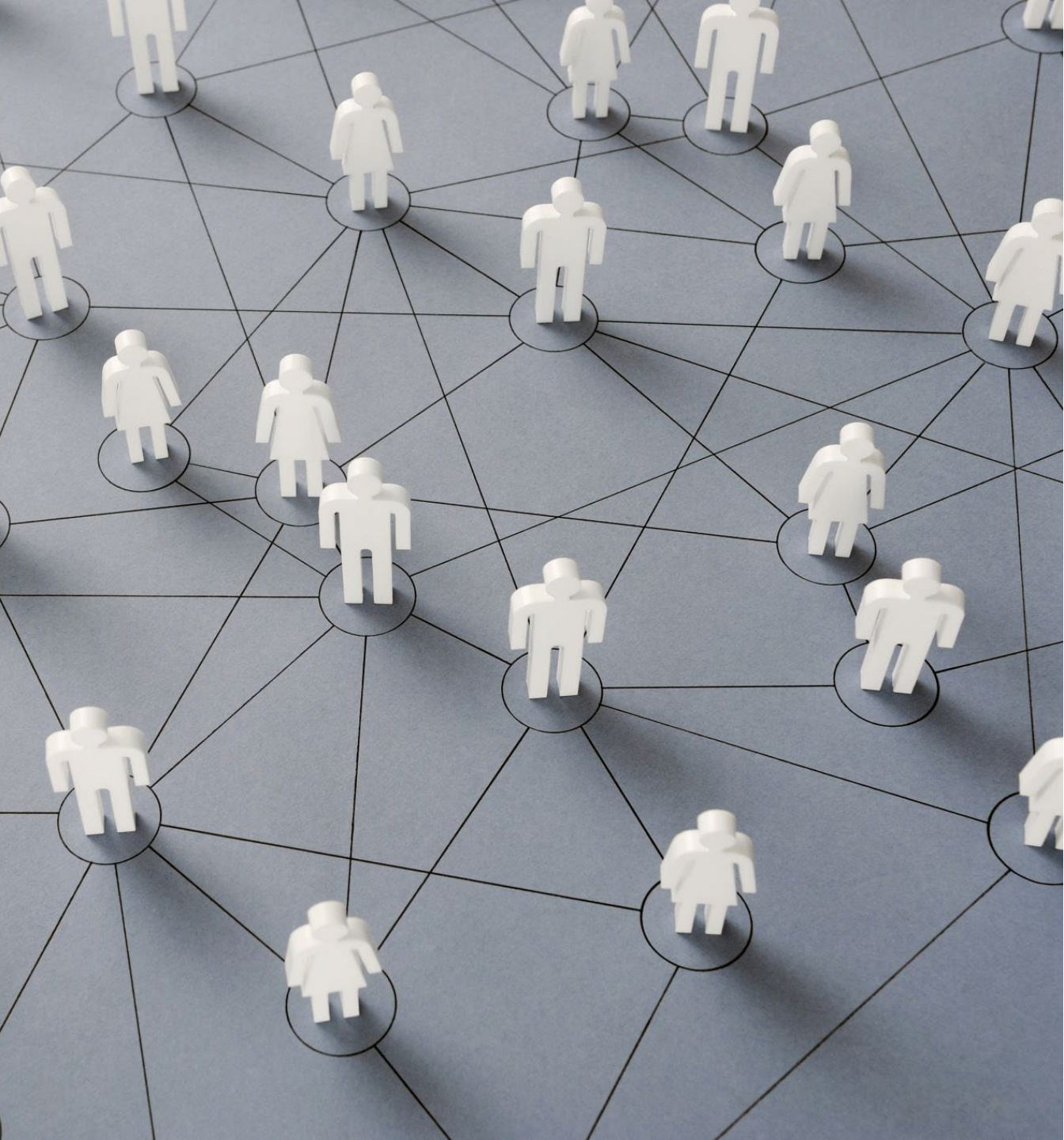
# About The Cluster Centre

The Cluster Centre is an SME located in Kiltoom, Co. Roscommon.

In 2019 we set out to promote clusters and clustering initiatives in our all-island landscape.

Industry Clustering is recognised as a very valuable economic tool for companies, industry sectors & communities for regional development and for national competitiveness.

Regions successful in facilitating industry clusters have been found to have higher levels of productivity, research and innovation, employment and prosperity.



# Social Enterprise Exchange

## Aim

To interconnect & co-construct  
the social enterprise  
ecosystem  
towards a coordinated regional ecosystem  
using a systems level approach.

# Social Enterprise Exchange



- ✓ Social Enterprise Exchange will gather and map the existing social enterprise ecosystem – social enterprise companies, champions, trainers, support agencies and the asset base in order to evidence and showcase the regional Social Enterprise asset base across the geography.
- ✓ This midlands regional coordination will make visible the size of the sector, the understanding of the sector and identify its place in the enterprise ecosystem.
- ✓ Social Enterprise Exchange will build relationships and connect with other regional, national and EU initiatives & best practice.
- ✓ Social Enterprise Exchange will hold an annual regional conference to analyse & discuss our regional social enterprise ecosystem.



**Laois County Council**

Áras an Chontae, Portlaoise, Co. Laois



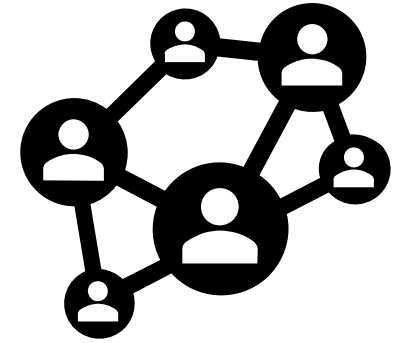
**Comhairle Chontae na Gaillimhe**  
**Galway County Council**



# Social Enterprise Exchange – a partnership approach

- A partnership approach is at the centre of how we will deliver this programme
- Key project partners include Roscommon Leader Partnership, Galway County Council and Laois County Council.
- Key regional partners include Longford County Council, Offaly Local Development Company, Westmeath Community Development, Bord na Móna, Irish Rural Link, Irish Social Enterprise Network, Dunhill Ecopark & SERI
-

# Social Enterprise Exchange

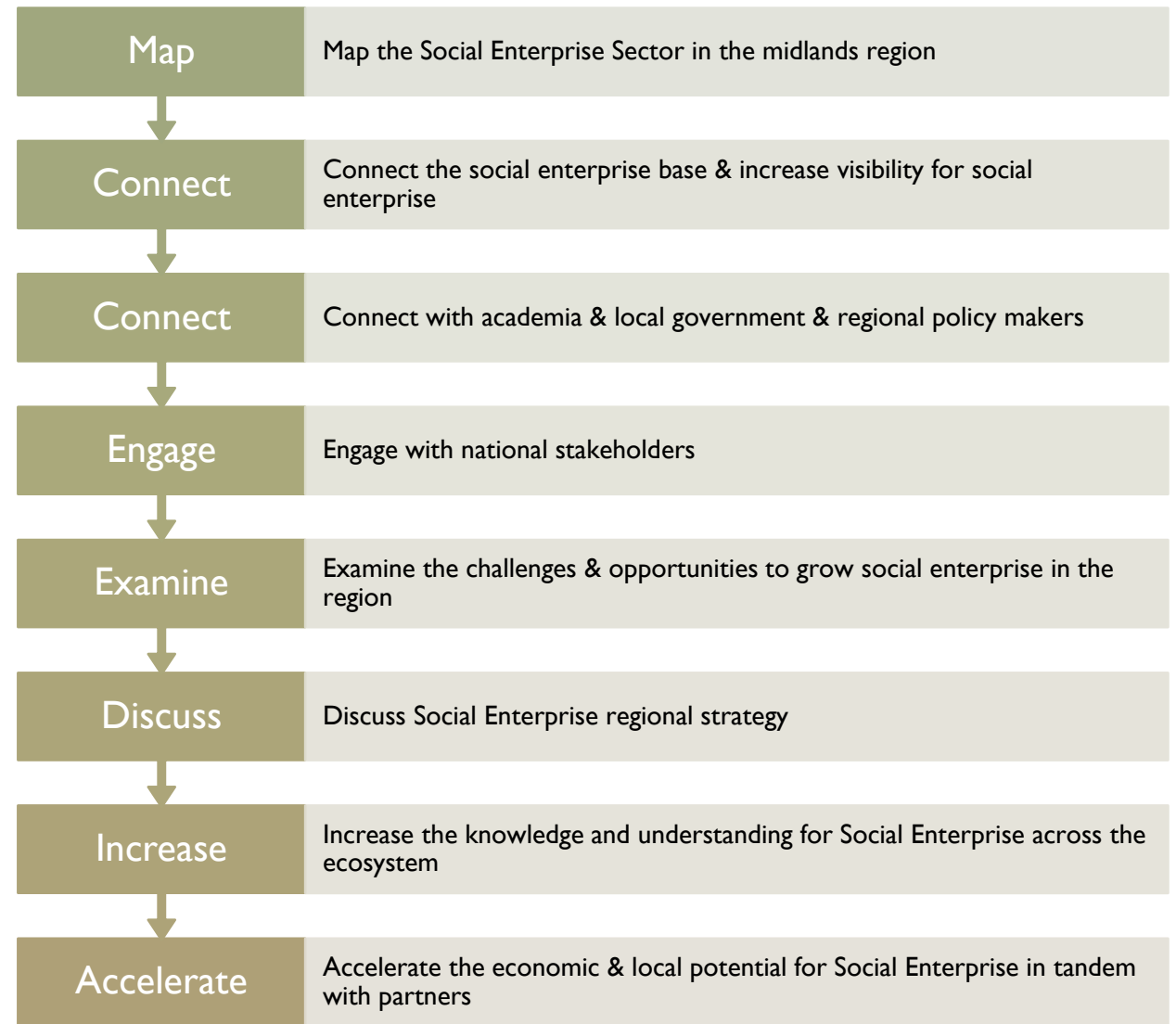


Social Enterprise Exchange will build upon and join the existing asset base, partnerships, appetite and commitment to the social enterprise sector and connect the quadruple helix on the sector.

The cluster type approach to social enterprise sector across the 6 counties in the region will generate opportunity, build in scale, increase the scope, optimise the resources and align with local, regional and national development plans.

The 6 counties in focus for Social Enterprise Exchange is Roscommon, east Galway, Laois, Offaly, Longford & Westmeath

# What the project sets out to achieve



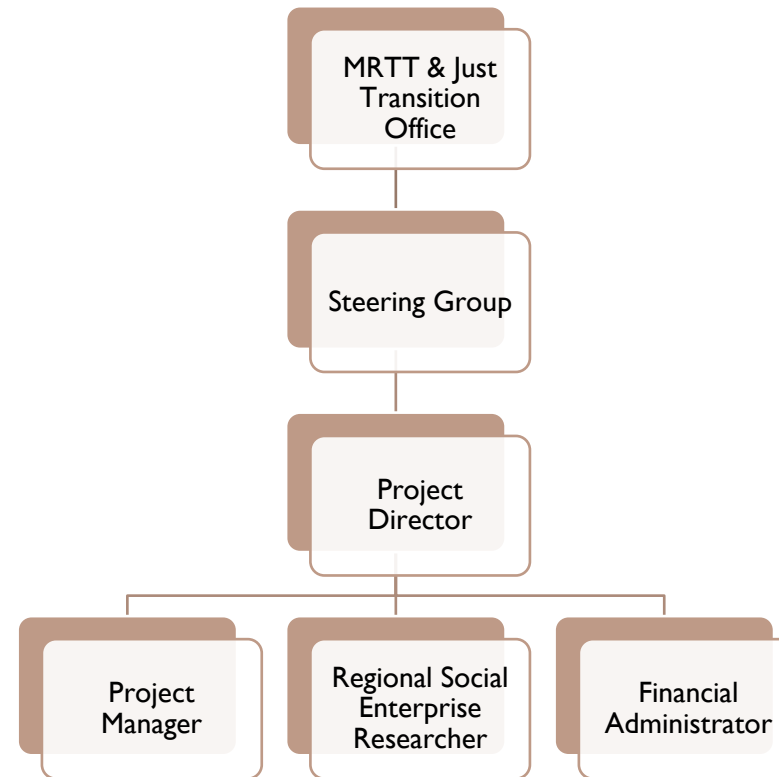
Year 1 - Dec 21	Year 2 – Dec 22	Year 3 – Dec 23
<b>Discover</b>	<b>Define</b>	<b>Destination</b>
Project Inception	Mapping the social enterprise base	Raise profile for the midlands social enterprise sector
Project planning & Team recruited	Build & deepen the regional coordination & engagement across quadruple helix	Identify opportunities for sectoral & strategy development
Data framework & commence mapping	Increase visibility for midlands social enterprise sector	Connect regional, national, international & best practise
Connect into the regional landscape	Connect with the national stakeholders	Social Enterprise Exchange Conference
Social Enterprise Exchange Conference	Social Enterprise Exchange Conference	Review, Reflect & Project Close

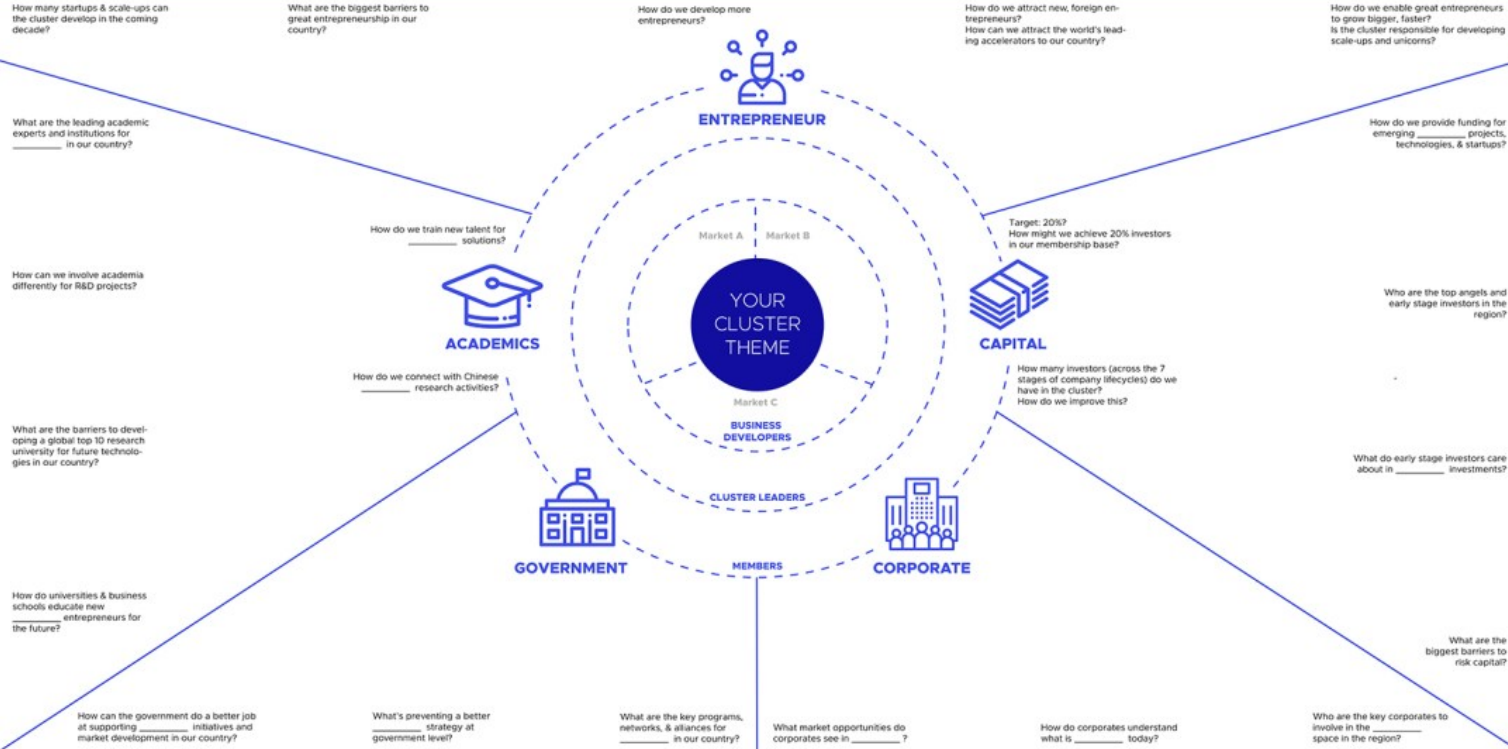


# ANNUAL MILESTONES



# Project Management & Governance structure





Connecting & understanding the regional Social Enterprise landscape

# Outcomes

Regional & County Social Enterprise Register, supported by a robust, up to date and common data framework

Dedicated Social Enterprise regional position

Cluster approach to connection the regional ecosystem

Regional coordination point

Regional visibility for Social Enterprise

Regional knowledge share & peer to peer learning

Contributing and informing policy

Reach out to other Social Enterprise Networks in Ireland, and EU Social Enterprise networks

Position the Midlands Social Enterprise evidence base to participate in EU and National funding opportunities

Make the Midlands Social Enterprise base visible at the National Social Enterprise Conference

Contribute added value to the national Social Enterprise policy & infrastructure.

Publish the Asset Register of the Midlands Social Enterprise

Propose additional online vehicle for increasing dissemination and increasing visibility

Culture a regional shared social enterprise economy with increased strength & potential



We look forward to  
connecting with you  
on this journey

Connect at [info@clustercentre.ie](mailto:info@clustercentre.ie)