

## Marine Notice No. 29 of 2012

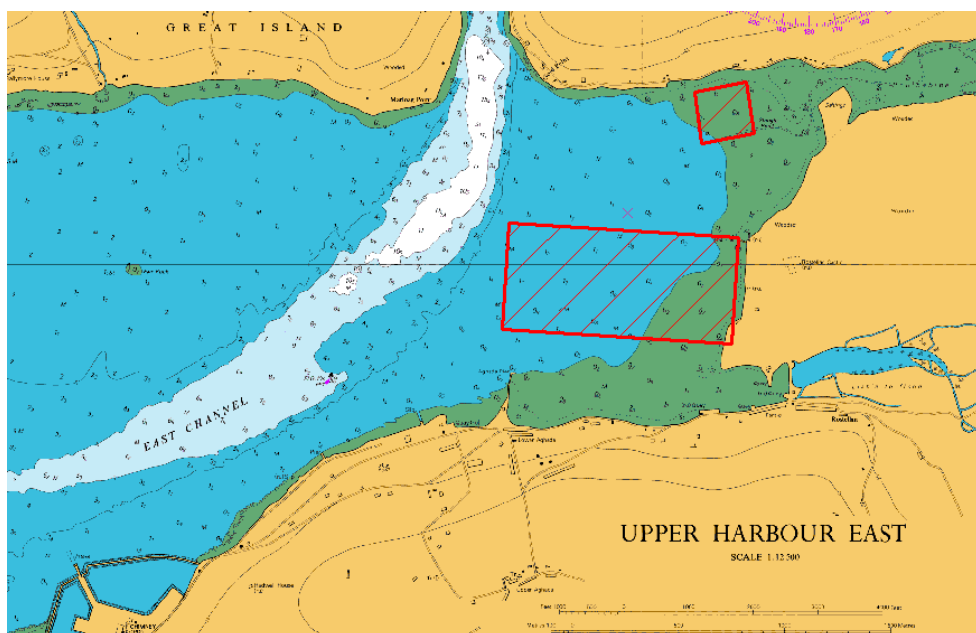
*Notice to all Shipowners, Fishing Vessel Owners, Agents, Shipmasters, Skippers, Fishermen, Yachtsmen and Seafarers*

### Seabed Obstructions at Rostellan, Cork Harbour, County Cork

The Department of Transport, Tourism and Sport has been advised by the Department of Agriculture, Food & the Marine and the Department of the Environment, Community & Local Government that steel bars are currently projecting from the seabed to various heights at Rostellan, Cork Harbour, County Cork. Mariners are advised to exercise particular caution when navigating in the area.

The location of the overall area of these hazards is detailed in the table and map below.

Latitude	Longitude		Latitude	Longitude
51° 51'.13 N	008° 12'.60 W		51° 51'.47 N	008° 11'.84 W
51° 51'.10 N	008° 11'.66 W		51° 51'.49 N	008° 11'.62 W
51° 50'.82 N	008° 11'.68 W		51° 51'.36 N	008° 11'.59 W
51° 50'.86 N	008° 12'.62 W		51° 51'.34 N	008° 11'.81 W



Director General,  
 Maritime Safety Directorate,  
 Department of Transport, Tourism and Sport,  
 Leeson Lane, Dublin 2, Ireland.

05/06/2012

For any technical assistance in relation to this Marine Notice, please contact:  
 The Marine Survey Office, Leeson Lane, Dublin 2, tel: +353-(0)1-678 3400.  
 For general enquiries, please contact the Maritime Safety Policy Division, tel: +353-(0)1-678 3418.  
 Written enquiries concerning Marine Notices should be addressed to:  
 Maritime Safety Directorate, Department of Transport, Tourism and Sport, Leeson Lane, Dublin 2, Ireland.  
 email: [marinenotices@dtas.ie](mailto:marinenotices@dtas.ie) or visit us at: [www.dttas.ie](http://www.dttas.ie)