

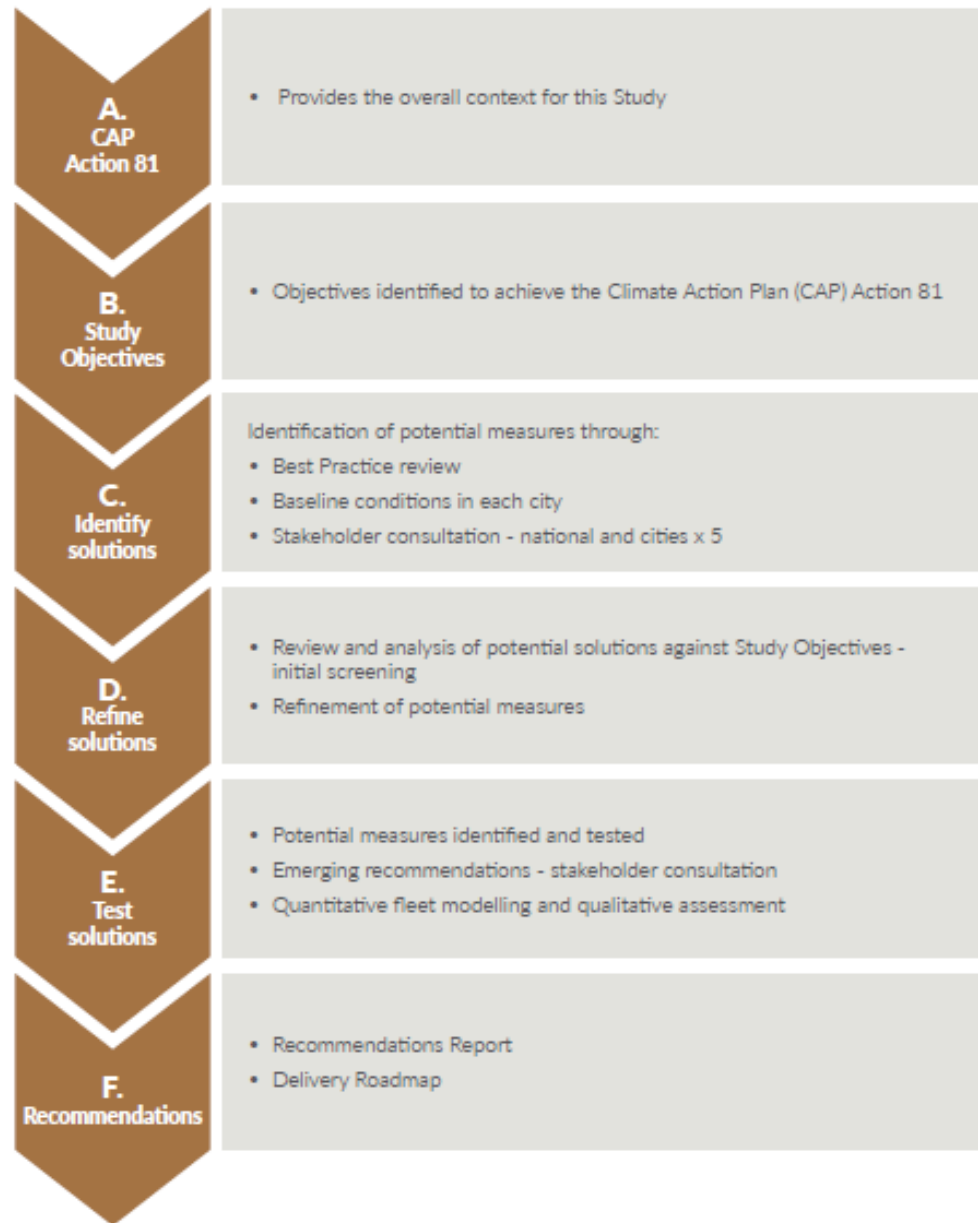
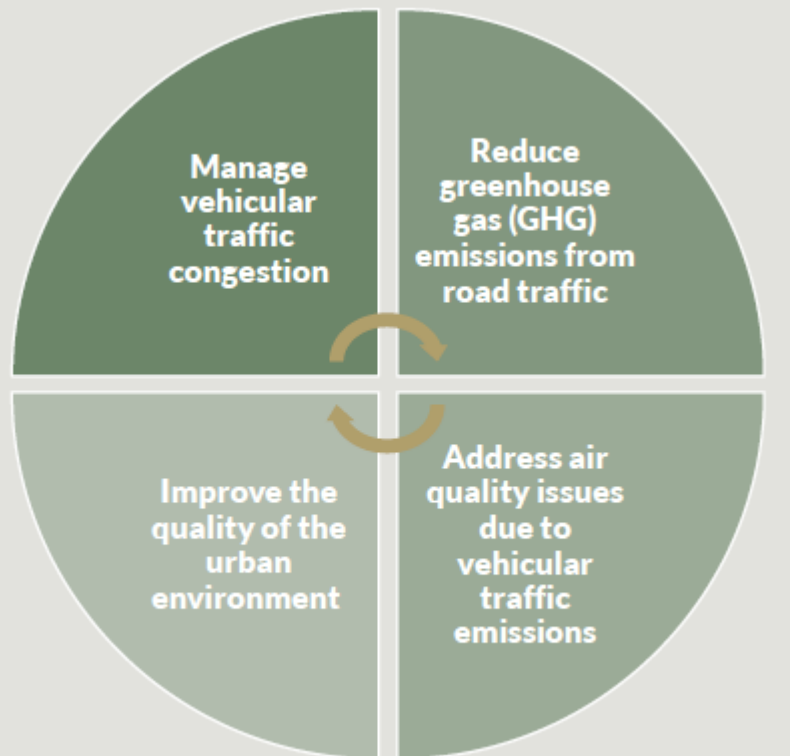


# Draft Recommendations Report

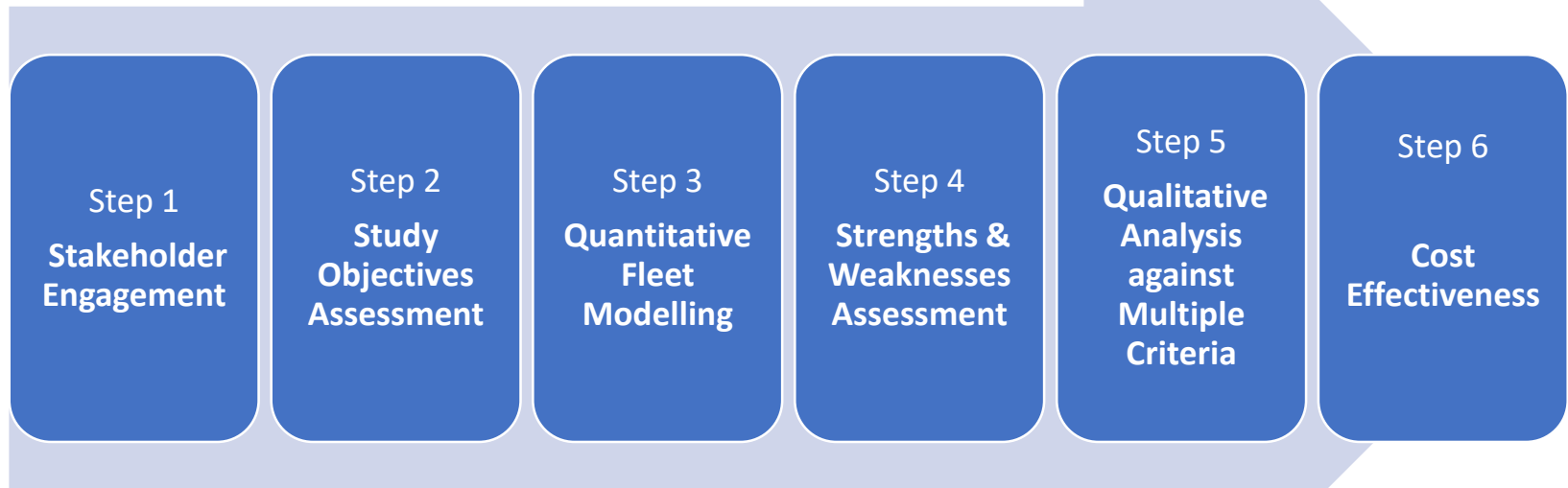
Five Cities Demand  
Management Study

**SYSTRA**

# Study Objectives & Methodology



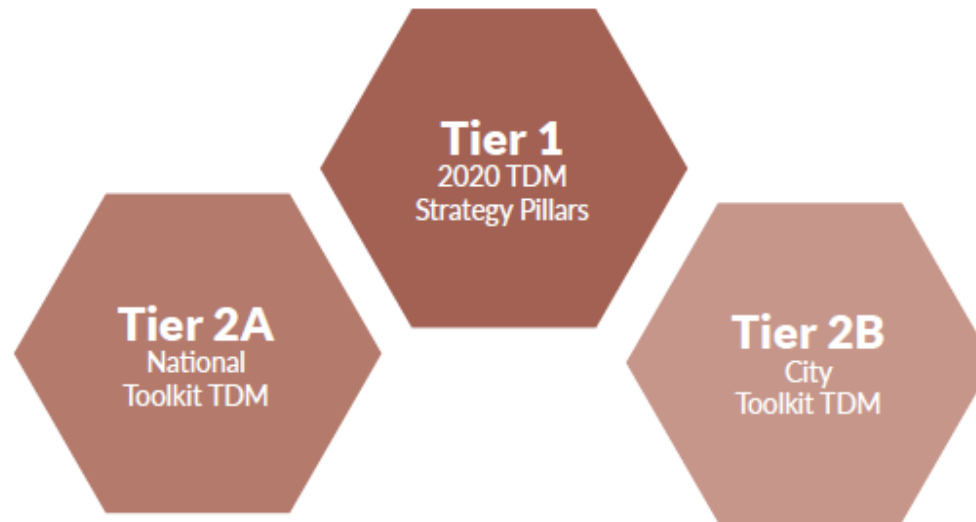
# Phase E – Test Solutions



Culminating with the identification of a set of proposed **Recommended Demand Management Measures**, and an emerging **Delivery Roadmap**

# The Tiered Measures Approach

---



**Tier 1 Transport Demand Management (TDM) Strategy Pillars** – measures identified as having a potentially high scale of impact and change within the five cities. More detailed analysis undertaken to identify the most appropriate strategy. Overall ranking used to inform emerging Delivery Roadmap.

**Tier 2 TDM Toolkit** – can be applied in different ways and intensities, recognising the different circumstances of each city and their current and planned application of TDM interventions. Offers flexibility for national (Tier 2a) and local (Tier 2b) interventions to address delivery of the Study Objectives.

**All three tiers in combination will form the future strategic direction of TDM in the five cities.**

# Tier One – Strategic Framework

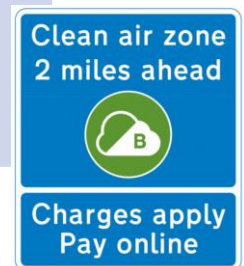
Fiscal Management (FM)	Vehicle Taxation	<a href="#">FM01: Progressive Vehicle Taxation</a>
		<a href="#">FM02: Vehicle Taxation per km</a>
		<a href="#">FM03: Time/Location based Vehicle Taxation per km</a>
	Alternative Fuels	<a href="#">FM05: Alternative Fuelled Vehicle Support</a>
	Congestion Charging	<a href="#">FM11: Congestion Charging</a>
Air Quality (AQ)	Clean Area Zones/Low Emissions Zones	<a href="#">AQ01: Clean Air Enabling Legislation</a>
		<a href="#">AQ04: Clean Air Zone (CAZ) via ANPR</a>
		<a href="#">AQ05: Clean Air Zone (CAZ) via National Vehicle Sticker Scheme</a>
Parking & Traffic Management (PTM)	Workplace Parking Levy	<a href="#">PTM01: Workplace Parking Levy</a>
	On-Street Parking Controls & Pricing	<a href="#">PTM04: Public Parking Controls</a>
Planning Policy (PP)	Transport & Public Health	<a href="#">PP01: Healthy Streets Assessments</a>
	Transport Appraisal Enhancements	<a href="#">PP03: Transport Appraisal Methodologies</a>
	National Planning Framework Delivery Management	<a href="#">PP04: Enhance Delivery of National Planning Framework</a>
	Development of 15-minute neighbourhoods	<a href="#">PP08: 15-Minute Neighbourhoods</a>

# Tier One – Initial Assessment Outcome

Rank	Recommended for Inclusion in emerging Roadmap	Not included in Roadmap due to higher ranking alternative	Further Consideration to Come
1	PP08 15 Minute Neighbourhoods		
2	PP04 National Planning Framework Delivery Management		
3		PP01 Healthy Streets – Overlaps with PP08	
4	PTM04 Public Parking Controls		
5	FM03 Time/Location Based Vehicle Taxation per km		
6	FM05 Alternative Fuelled Vehicle Support		
7	FM01 Progressive Vehicle Taxation		
8	PP03 Transport Appraisal Enhancements		
9		FM02 Vehicle Taxation per km – Overlaps with FM03	
10	AQ01 Clean Air Enabling Legislation		
11			FM11 Congestion Charge
12			PTM01 Workplace Parking Levy
13			AQ05 Clean Air Zone via National Vehicle Sticker System
14			AQ04 Clean Air Zone via ANPR (in conjunction with FM11 in Dublin)

# Tier One – highlights from initial fleet modelling

Measure	Fleet modelling results	
	CO <sub>2</sub>	NO <sub>x</sub>
<b>FM01: Progressive Vehicle Taxation</b> Progressive taxation measures towards cleaner, safer fleets	-33%	-63%
<b>AQ01: Clean Air Enabling Legislation</b> Clean Air Enabling Legislation, including bus & taxi licensing impacts	-26%	-60%
<b>AQ04: Clean Air Zone (CAZ) via ANPR</b> Where significant Air Quality concerns arise in individual cities	-34%	-71%
<b>AQ05: Clean Air Zone (CAZ) via National Vehicle Sticker System</b> Where significant Air Quality concerns arise in individual cities	-31%	-70%

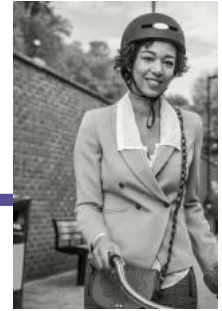


# Tier Two A – National Toolkit

Fiscal Measures (FM)	Alternative Fuels	<a href="#">FM06: Hydrogen Vehicle Trials</a>
	Fuel Pricing	<a href="#">FM07: Fuel Taxation</a>
	Scrappage Schemes	<a href="#">FM08: Vehicle to Vehicle Scrappage Scheme</a>
		<a href="#">FM09: Vehicle to Mobility Credit Scrappage Scheme</a>
Incentivising Sustainable mobility	<a href="#">FM10: Sustainable mobility Incentives</a>	
Air Quality (AQ)	Clean Area Zones/Low Emissions Zones	<a href="#">AQ02: Air Quality Monitoring</a>
		<a href="#">AQ03: Air Quality Citizen Engagement</a>
Parking & Traffic Management (PTM)	EV Parking Strategies	<a href="#">PTM03: Electric Vehicle Charging Management</a>
Planning Policy (PP)	Transport & Public Health	<a href="#">PP02: Public Health &amp; Transport</a>
Behavioural Change (BC)	ISO 50001 Energy Management Certification	<a href="#">BC01: ISO50001 Energy Management Standard - Public Sector</a>
		<a href="#">BC02: ISO50001 Energy Management Standard - Private Sector</a>
	Eco-driving	<a href="#">BC09: Eco-Driving</a>
	Behavioural Change Campaigns	<a href="#">BC10: Behavioural Change Campaign - Cleaner Fleets</a>
Technology & Communication (TC)	Integrated Ticketing and Mobility as a Service	<a href="#">TC01: Next Generation Ticketing</a>
		<a href="#">TC02: Mobility as a Service Pilot</a>
	Connected Vehicles	<a href="#">TC09: Connected Vehicles</a>



# Tier Two A – National Toolkit highlights from initial fleet modelling



Measure	Fleet modelling results	
	CO <sub>2</sub>	NO <sub>x</sub>
<b>FM09: Vehicle to Mobility Credit Scrappage Scheme</b> Scrappage scheme providing mobility credits for sustainable mobility in exchange for high-polluting vehicles being scrapped. Further examination/evidence as regards the potential for a Pilot Study in larger cities, with smaller cities pending outcome.	-21%	-48%
<b>AQ02: Air Quality Monitoring</b> Continue EPA roll out of AQ monitoring stations, building capacity and capability for AQ modelling.	-21%	-48%
<b>AQ03: Air Quality Citizen Engagement</b> Continue EPA roll out of AQ citizen engagement programmes (e.g. Globe Schools, Curious Noses / Clean Air Ireland) to enhance awareness of air quality and support behavioural change.	N/A	N/A
<b>BC10: Behavioural Change Campaign – Cleaner Fleets</b> Behavioural change campaign to support switch to cleaner, lower emissions fleets for next vehicle purchases (including private cars & taxis)	-27%	-60%

# Tier Two B – City Toolkit

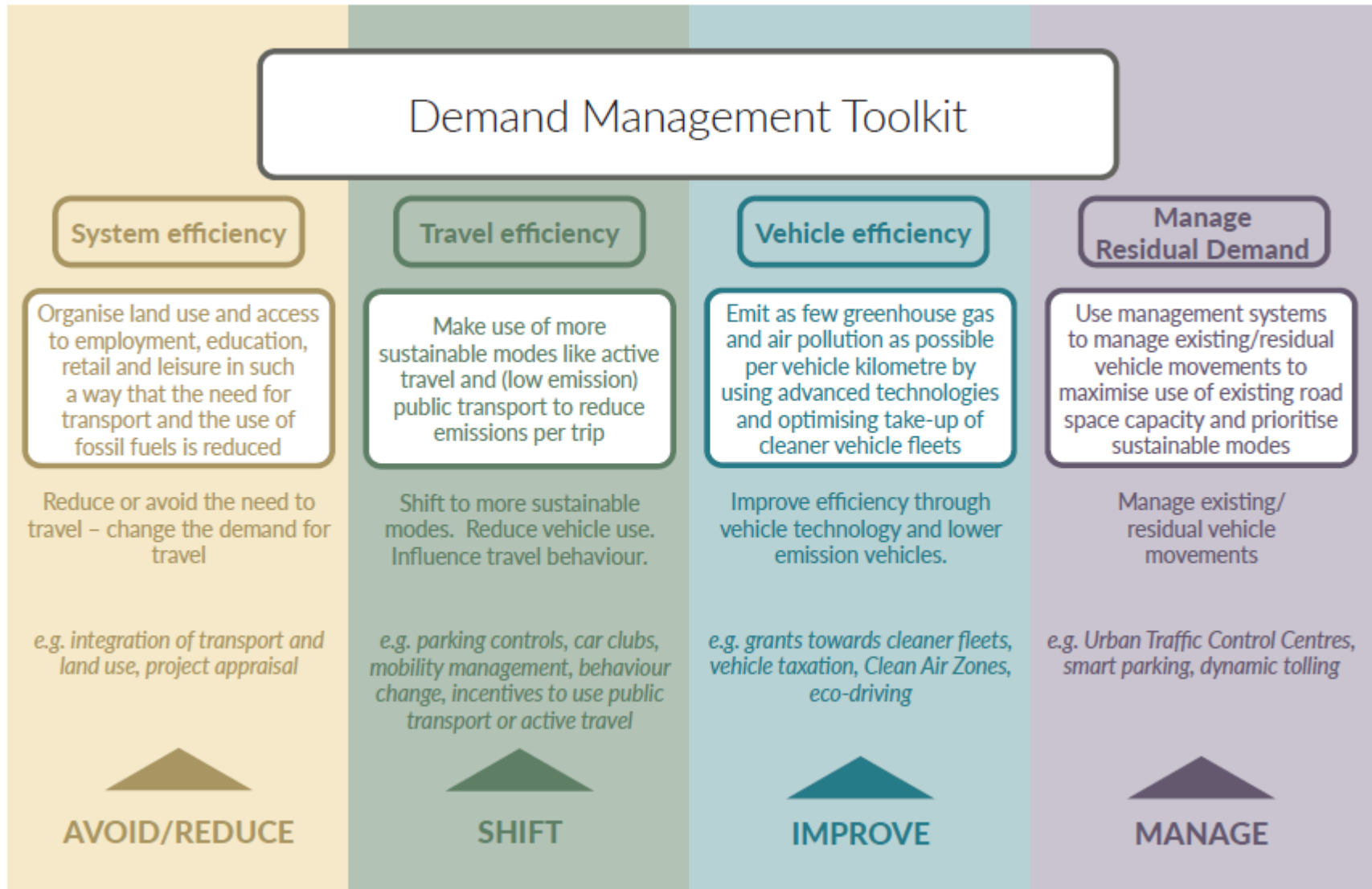
<b>Fiscal Measures (FM)</b>	Tolling	<a href="#">FM12: M50 Multi-Point Tolling</a>
<b>Parking &amp; Traffic Management (PTM)</b>	EV Charging Infrastructure Strategies	<a href="#">PTM02: Electric Vehicle Charging Strategy</a>
	On-Street Parking Controls & Pricing	<a href="#">PTM07: Car Clubs/Car Sharing</a>
	Residential & Workplace Parking Standards	<a href="#">PTM08: Residential Parking Standards</a>
		<a href="#">PTM09: Workplace Parking Standards</a>
		<a href="#">PTM10: Residential Parking Standards - EVs &amp; Car Clubs</a>
	Freight/Goods Delivery Management	<a href="#">PTM12: HGV Management Strategy</a>
		<a href="#">PTM13: Active Kerbside Management</a>
	Traffic Management	<a href="#">PTM14: Slow Zones</a>
<a href="#">PTM15: Decreased Speed Limits on Urban Motorways</a>		
<a href="#">PTM16: Park &amp; Ride</a>		
<a href="#">PTM17: Car Free Zones &amp; Streets</a>		
<b>Behavioural Change (BC)</b>	Mobility Management Plans	<a href="#">BC03: School Mobility Management Plans (MMPs)</a>
		<a href="#">BC14: School Streets &amp; Safer Routes to School</a>
		<a href="#">BC04: Workplace Mobility Management Plans</a>
		<a href="#">BC05: Flexible Working</a>
		<a href="#">BC06: Staggering School and Workplace Start and Finish Times</a>
		<a href="#">BC07: Residential Mobility Management Plans</a>
		<a href="#">BC08: Area Mobility Management Plans</a>
		<a href="#">BC11: Reward Schemes</a>
Behavioural Change Campaigns	<a href="#">BC12: Marketing New Schemes</a>	
	<a href="#">BC13: Disruption &amp; Resilience</a>	
<b>Technology &amp; Communications (TC)</b>	Intelligent Transport Systems	<a href="#">TC03: Real Time Passenger Information</a>
		<a href="#">TC04: Ramp Metering on National Roads</a>
	Variable Speed Limits	<a href="#">TC05: M50 Variable Speed Limits</a>
	Urban Traffic Management Centres	<a href="#">TC06: Public Transport Control Centres</a>
		<a href="#">TC07: Urban Traffic Management Centres</a>
Parking - Wayfinding & Variable Message Systems	<a href="#">TC08: Smart Parking Wayfinding &amp; VMS</a>	

# Tier Two B – City Toolkit highlights from initial fleet modelling



Measure	Fleet modelling results	
	CO <sub>2</sub>	NO <sub>x</sub>
<p><b>PTM02: Electric Vehicle Charging Strategy</b> Development &amp; implementation of an EV charging strategy for each city for private cars and taxis, including: County Development Plan Parking Standards; on-street; Park &amp; Ride; Rail Stations; Mobility Hubs; Multi-storey parking and e-Taxi charging infrastructure.</p>	-31%	-49%
<p><b>PTM08: Residential Parking Standards</b> Reduced Residential Parking Standards for new developments in appropriate locations</p>	N/A	N/A
<p><b>PTM12: HGV Management Strategy</b> Development &amp; implementation of a HGV Management Strategy for each city</p>	N/A	N/A
<p><b>PTM17: Car Free Zones &amp; Streets</b> Identify areas within cities that could have a positive impact on Air Quality and quality of the Public Realm</p>	N/A	N/A
<p><b>BC14: School Streets &amp; Safer Routes to School</b> Resources to support with local School Streets &amp; Safer Routes to School initiative, including consultation, implementation and monitoring.</p>	N/A	N/A

# The emerging Delivery Roadmap – approach



# The emerging Delivery Roadmap – Tier One

---

## Emerging **top three** Tier One recommendations

**1<sup>st</sup>** PP08 – 15 Minute Neighbourhoods

**2<sup>nd</sup>** PP04 – NPF Delivery Management

**3<sup>rd</sup>** PTM04 – Public Parking Controls



# Next Steps

Quantitative Assessment using NTA's Regional Modelling System on applicable Tier One measures.

Analysis will inform refinement and prioritisation of Recommendations Report and Delivery Roadmap.

Category	Subcategory	Measure	Measure Type	RMS Component
Fiscal	Vehicle Taxation	Progressive Vehicle Taxation (FM01)	Tier 1 Strategic	Adjustment to Price per Minute (PPM) & Price per Km (PPK) input parameters
		Time/Location based Vehicle Taxation per km (FM03)	Tier 1 Strategic	(Per km charge modelled to give indication of impact of this measure). Adjustment to Price per Minute (PPM) & Price per Km (PPK) input parameters
	Alternative Fuels	Alternative Fuelled Vehicle Support (FM05)	Tier 1 Strategic	Environment Module
	Congestion Charging	Further examination/evidence required in relation to Congestion Charging within a specified zone (Cork & Dublin) (FM11)	Tier 1 Strategic	Road Assignment Model - Road charges and bans
Air Quality	Clean Area Zones/Low Emissions Zones	Clean Air Enabling Legislation (AQ01)	Tier 1 Strategic	Environment Module
		CAZ via a National Vehicle Sticker Scheme (AQ05)	Tier 1 Strategic	Environment Module to reflect fleet changes
Parking & Traffic Management	Workplace Parking Levy	Workplace Parking Levy within a pilot City (Galway) (PTM01)	Tier 1 Strategic	Changes to spaces available in Free Workplace Parking Module and Parking Distribution Module (i.e. Paid Parking)
	On-Street Parking Controls & Pricing	Public Parking Controls (PTM04)	Tier 1 Strategic	Parking Distribution Model

AIR QUALITY



GREEN HOUSE GAS  
REDUCTION



CONGESTION  
REDUCTION



THANK YOU

SYSTRA