



Marine Notice No. 36 of 2022

*Notice to all Shipowners, Fishing Vessel Owners, Agents, Shipmasters, Skippers, Fishers,
Yachtsmen and Seafarers*

Sceirde Rocks Offshore Wind Farm - Wider Array Site and Export Cable Corridor - Geophysical Survey Campaign off Co. Galway and Co. Clare

1. Notice of Activity

The Department of Transport has been advised that EGS International Ltd will undertake a geophysical survey campaign for a proposed offshore windfarm and associated export cable corridor, centred around Sceirde Rocks, off the west coast of Ireland, near Galway.

The survey will commence in early **June 2022** (approx. 10th June) and then continue throughout June, July and possibly into **August 2022**. Please note the start date and the duration of the activity are weather dependent.

A separate Marine Notice will set out details of the survey of the Inner Array Site.

2. Location of Activity

The operations will take place in two locations, as follows: (a) the Wider Array Site off the coast of Connemara, Co. Galway and, (b) the Export Cable Corridor (ECC) to the west of the Aran Islands and towards the coast of Co. Clare. Please see coordinates indicated at Appendix 1 and the maps provided separately at Appendix 2.

3. Details of the Survey Vessel

The work will be conducted by the **EGS Ventus** (Call sign: **V7119**). The vessel will be towing survey equipment astern, which will restrict its ability to manoeuvre. All vessels operating within this area are requested to keep their distance and pass at minimum speed to reduce vessel wash. Survey speed will be 4 knots.

During operations the vessels will display the appropriate day shapes/signals and lights as required by the COLREGS. A continuous listening watch will be maintained on VHF Channel 16 and Digital Selective Calling (DSC).

4. Contact Details

Enquiries regarding the contents of this Marine Notice, should be directed to:

EGSi Project Manager: Walter Colautti
Email: wcolautti@egssurvey.co.uk
Office: +44 (0)1420 489 329
Mobile: +44 (0)7876 707 454

Any further enquiries regarding the project should be directed to:

GDG Project Manager: Toby Harrison
Email: tharrison@gdgeo.com
Mobile: +44 7725 997 528

For enquiries relating to fishing, please contact the project Fisheries Liaison Officer (FLO):

Director Fisheries Liaisons Ltd.: Mark O Reilly
Email: mark@fishery-liaisons.com
Mobile: + 353 (0)85 139 9000

All mariners are reminded of their responsibilities under the **International Collision Regulations** and are reminded of [Marine Notice No. 17 of 2007](#), which gives general advice in relation to the activities of vessels engaged in survey work for hydrographic, seismic, fishing research and underwater operations.

The International Regulations for Prevention of Collisions at Sea (COLREGS) are implemented in Irish law by the *Merchant Shipping (Collision Regulations) (Ships and Water Craft on the Water) Order 2012* [S.I. No. 507 of 2012] and the *Signals of Distress (Ships) Rules 2012* [S.I. No.170 of 2012]. [See Marine Notice No. 06 of 2013.](#) These Statutory Instruments may be purchased by mail order from Government Publications, Office of Public Works, 52 St. Stephen's Green, Dublin 2. Tel: (01) 6476834/1890-213434. They are also available online at: www.irishstatutebook.ie.

Note: Marine Notices are issued purely for maritime safety and navigation reasons and should not be construed as conferring rights or granting permissions.

Irish Maritime Administration,
Department of Transport,
Leeson Lane, Dublin 2, D02 TR60, Ireland.

10/06/2022

Encl: Appendix 1 - coordinates
Appendix 2 - maps

For any technical assistance in relation to this Marine Notice, please contact:
The Marine Survey Office, email: MSO@transport.gov.ie
For general enquiries, please contact the Maritime Safety Policy Division, email:
MaritimeSafetyPolicyDivision@transport.gov.ie
Written enquiries concerning Marine Notices should be addressed to:
Dept. of Transport, Maritime Safety Policy Division, Leeson Lane, Dublin 2, D02 TR60, Ireland.
email: MarineNotices@transport.gov.ie or visit us at: www.gov.ie/transport

Appendix 1:

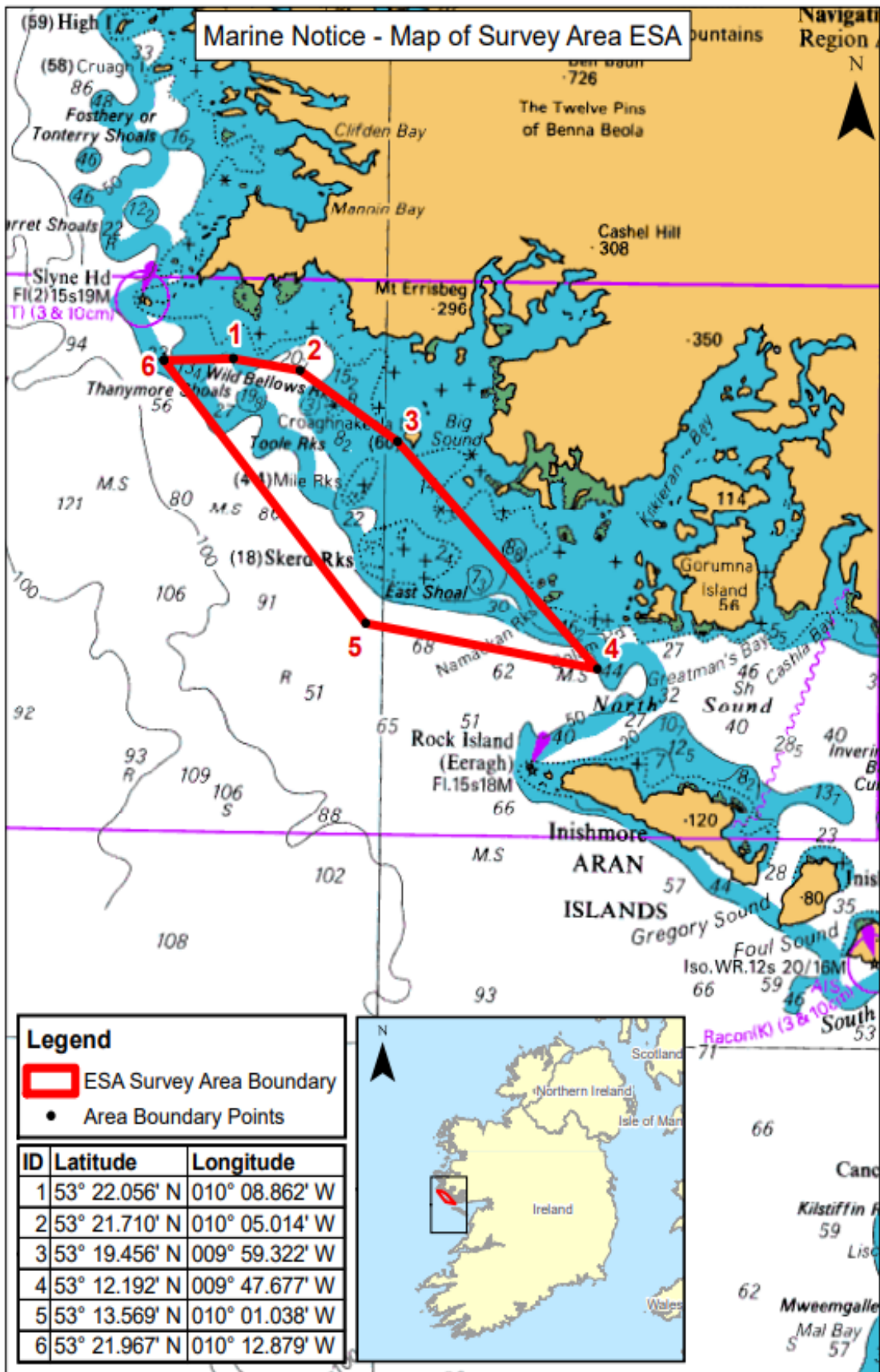
The areas are bounded by the following geographical coordinates:

(a) WIDER ARRAY SITE		
Site Boundary Point	Latitude	Longitude
1	53° 22.056' N	010° 08.862' W
2	53° 21.710' N	010° 05.014' W
3	53° 19.456' N	009° 59.322' W
4	53° 12.192' N	009° 47.677' W
5	53° 13.569' N	010° 01.038' W
6	53° 21.967' N	010° 12.879' W

(b) EXPORT CABLE CORRIDOR (ECC)		
Site Boundary Point	Latitude	Longitude
1	53° 15.755' N	009° 57.836' W
2	53° 15.932' N	009° 54.312' W
3	53° 11.085' N	009° 51.906' W
4	53° 07.694' N	009° 51.716' W
5	52° 45.787' N	009° 31.716' W
6	52° 44.387' N	009° 36.655' W
7	53° 07.412' N	009° 57.114' W
8	53° 10.578' N	009° 56.687' W
9	53° 14.819' N	009° 58.040' W

Appendix 2:

(a) Map of the Wider Array Site



(b) Map of the Export Cable Corridor (ECC)

