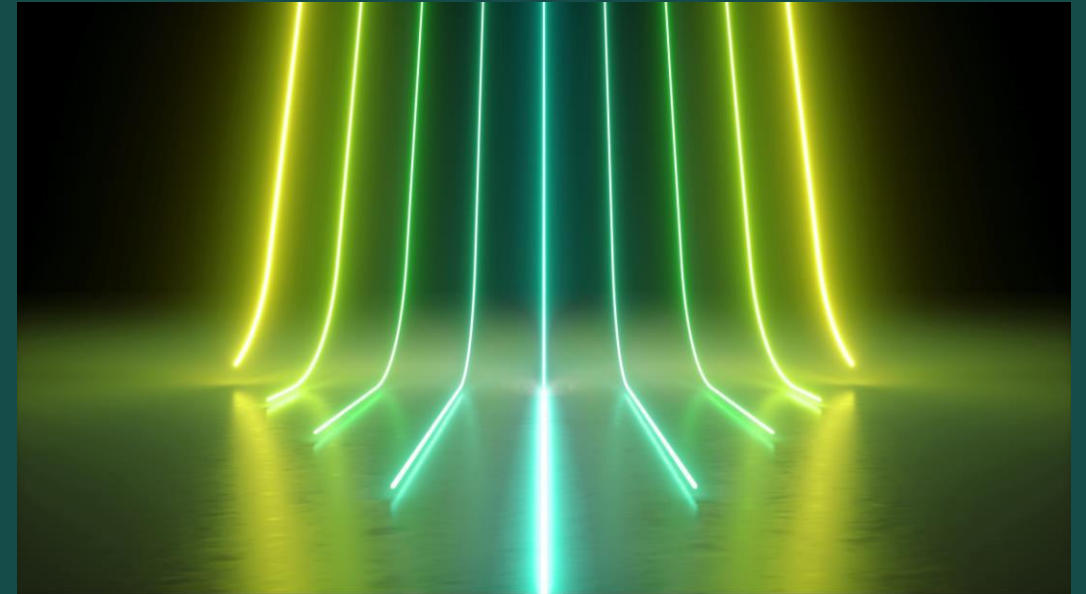




Education for Sustainable Development

Building Capacity of Educators



Dr. Fiona Maloney

**Director of Further Education &
Training Supports Service, ETBI**

Climate change and sustainable development must also be a critical focus for FET, with a strong contribution to the Government's call to action by building on FET's strong capabilities around energy, building and the environment. This will be central to the modernisation of construction skills, as innovating access in construction and skills related areas is vital.

FUTURE FET- TRANSFORMING LEARNING 2021-2024

ETBI Supporting Sustainable Education for FET

Continued collaboration with Government, SOLAS & the ETB Network – sector representation on forums, working groups, etc. to keep informed of national strategy and policy

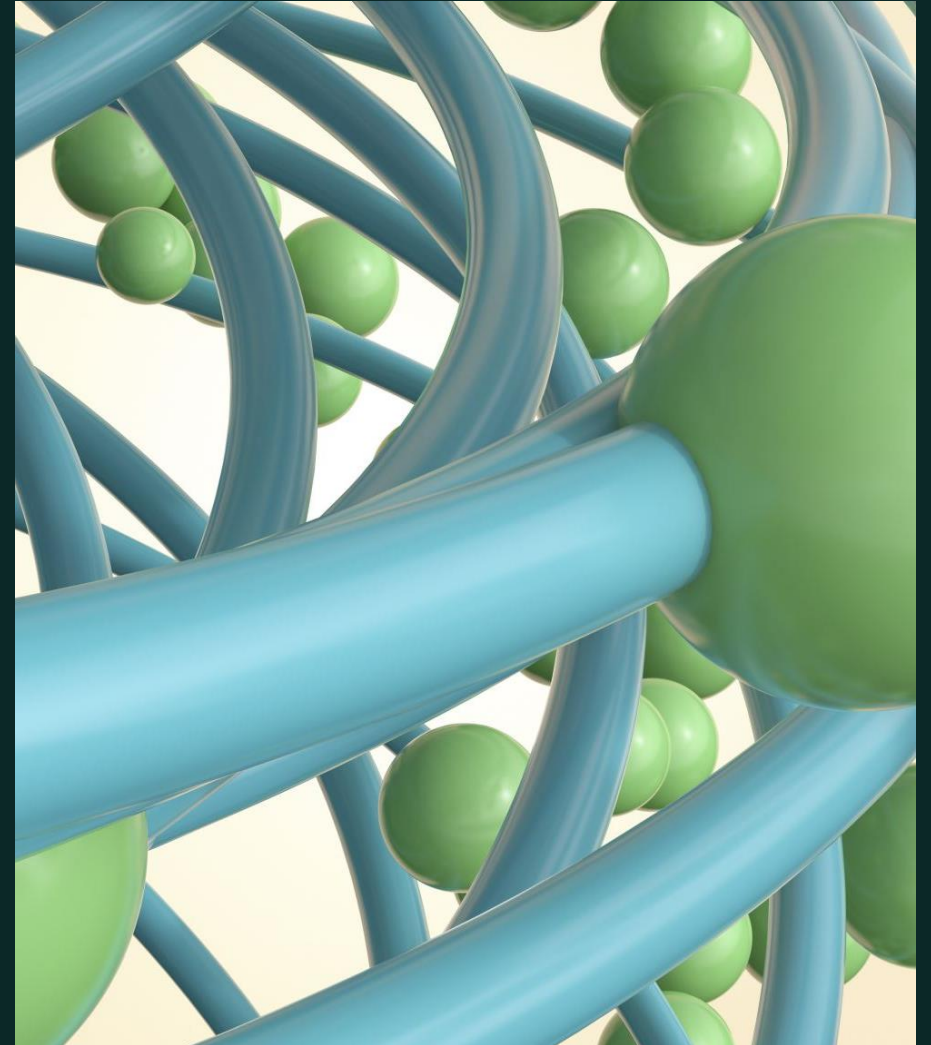
A newly established Professional Learning & Development Hub to ensure targeted and innovative professional learning opportunities are available to grow capacity and harness the skills of our FET staff

A dedicated Skills Unit, funded by SOLAS with a focused action plan to ensure the sector is fully engaged & supported

ETBI Structures - through OSD/Change/Procurement units supporting the network with the roll out of sector specific programmes, and guidelines regarding areas such as energy management, etc.

SECTORAL RESPONSE SO FAR

- Currently, there are approx. 50+ programmes being delivered by 16 ETBs with a focus on green skills
- Continued drive and commitment to implement the 3 key objectives of the Green Skills for FET Strategy, including growing NZEB, Retrofit and innovative Green Skills modules.
- Engaging with Enterprise to ensure education and training is aligned with the skills needs of SMEs/ employees for the green and circular economy.
- Ensuring continued professional development of FET practitioners to build capacity and skills in line the FET Professional Development Strategy 2022-2024
- ETBI Digital Library



1



Green Skills for Life

Objective: To create awareness of climate justice, sustainability and bioeconomic issues across FET learners, FET staff and school students.

2



Green Skills for Construction

Objective: To train and upskill those in construction occupations in the latest green technologies.

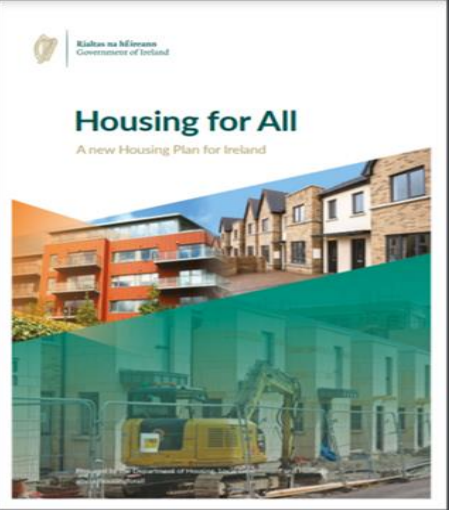
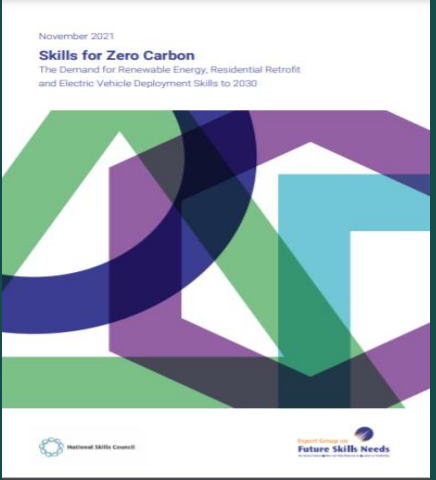
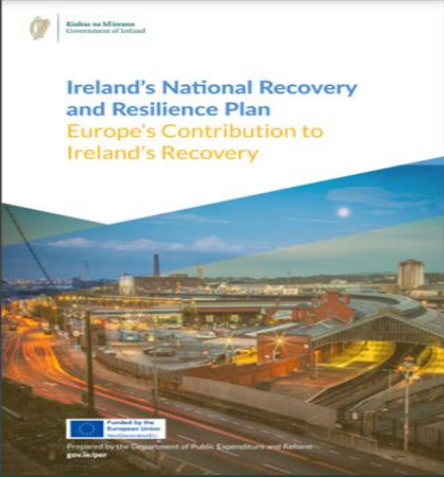
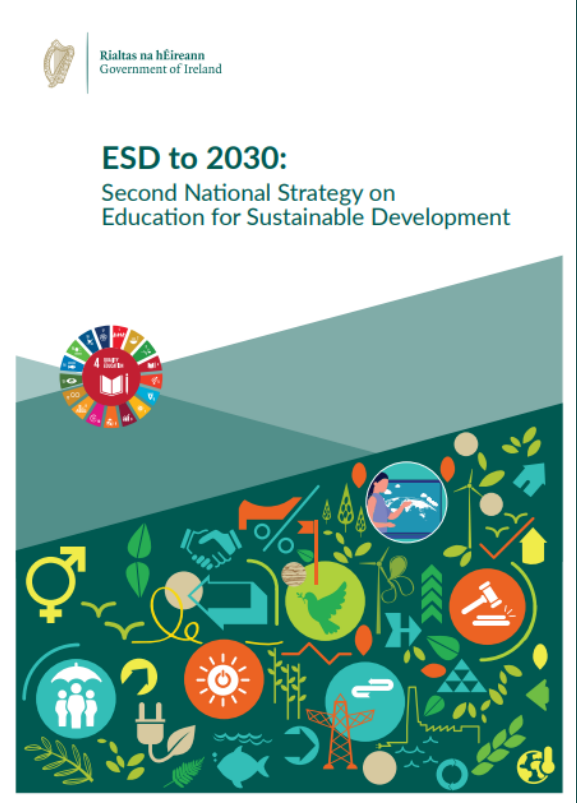
3



Green Skills for Careers

Objective: To create career opportunities in the green economy for the employed, unemployed and those within vulnerable sectors.

National Policy Drivers



What's on Offer across the ETB Sector



- **NZEB Centres of Excellence** have been established in Laois and Offaly ETB, Waterford Wexford ETB and Limerick Clare ETB with centres due to open in Cork ETB, Mayo, Sligo and Leitrim ETB and City of Dublin ETB.

Programmes available across these ETB's include NZEB Fundamentals, Ventilation, Retrofit, Air Tightness, External Wall Insulation, Passive House Principles and programmes specifically for roles such as Site Supervisors.

- **Skills to Advance Programmes** offers upskill and reskill opportunities to Employer and Employees. Some programme on offer currently include -

Environmental Sustainability in the Workplace

Lean Practice for Sustainable Business

Resource Efficiency in the Workplace

The Circular Economy

Sustainable Procurement

Greening the Supply Chain

- **Hospitality & Tourism**

The Developing Leaders for Hospitality and Tourism programme aims to equip employees in the hospitality and tourism sector with enhanced skills to lead and manage their teams effectively.

Led by KWETB, 50 Shades Greener is the first national state funded training programme to 'Green' the Hospitality & Tourism industry and reduce Ireland's carbon footprint.

- **Leadership & Management**

Remote Work Ready & Leading Remote Teams

Developed by SOLAS and the Education and Training Boards (ETBs), in collaboration with IDA Ireland, Enterprise Ireland and the Regional Skills Fora. These programme upskill staff, helping employers deal with the current business environment, its challenges and opportunities

Local Capacity Building Initiatives for FET Staff



Development and roll out of tailored Digital Badge programmes to build awareness. LOETB have 200+ staff participating.

Development and roll out of cross-ETB programmes (e.g., LCETB & CETB L5 Cert in Environmental Sustainability in the Workplace)

Peer to Peer Learning Initiatives - Cross service in collaboration with SMEs to encourage Green Teams and SDG advocates. KETB, LOETB, KWETB

Participation in the newly developed micro-credential programmes developed by SOLAS accredited at QQI Levels 1-4

Local PL&D policy - FET staff can apply to take up study in a specific area focused on local and national strategy

SOME CHALLENGES

- ❑ Consistent & effective leadership approach
- ❑ Communicating the vision to ALL
- ❑ Embedding the desire for cultural change
- ❑ Agile, flexible and responsive to programme provision
- ❑ Educators time available to engage with PL&D



THANK YOU

