



An Roinn Coimirce Sóisialaí  
Department of Social Protection

# Quarterly Statistical Report

**Quarter 4 2022**

Published  
Enquiries

26-01-2023  
[statsunit@welfare.ie](mailto:statsunit@welfare.ie)





## Background

The quarterly statistical report provides summary information on Income and Expenditure as well as total recipients of the main schemes administered by the Department of Social Protection.

The quarters referenced in this report cover the following periods

	Period
Quarter 1	January 1st - March 31st
Quarter 2	April 1st - June 30th
Quarter 3	July 1st - September 30th
Quarter 4	October 1st - December 31st

These statistics may be subject to revision and should be considered as provisional.

### Classifications

The schemes in the report are grouped into programmes according to the social need they address. The programmes and their associated main schemes are set out in the table below.

Programme	Schemes	
Pensions	State Pension Contributory Widow(er)'s Contributory Pension	State Pension Non-Contributory
Working Age Income Supports	Jobseeker's Benefit Jobseeker's Benefit for the Self employed Maternity Benefit Paternity Benefit Parent's Benefit	Jobseeker's Allowance One Parent Family Payment Widow(er)'s Non-Contributory Pension Pandemic Unemployment Payment
Illness Disability and Caring	Carer's Benefit Invalidity Pension Illness Benefit	Carer's Allowance Disability Allowance
Children	Child Benefit Working Family Payment	Back to Work Family Dividend

## Table of Contents

Background .....	2
Overall Expenditure .....	3
Programme Expenditure.....	4
Pensions .....	5
Working Age Income Supports.....	6
Illness, Disability, and Caring .....	7
Children and Supplementary Payments.....	8
Notes .....	14

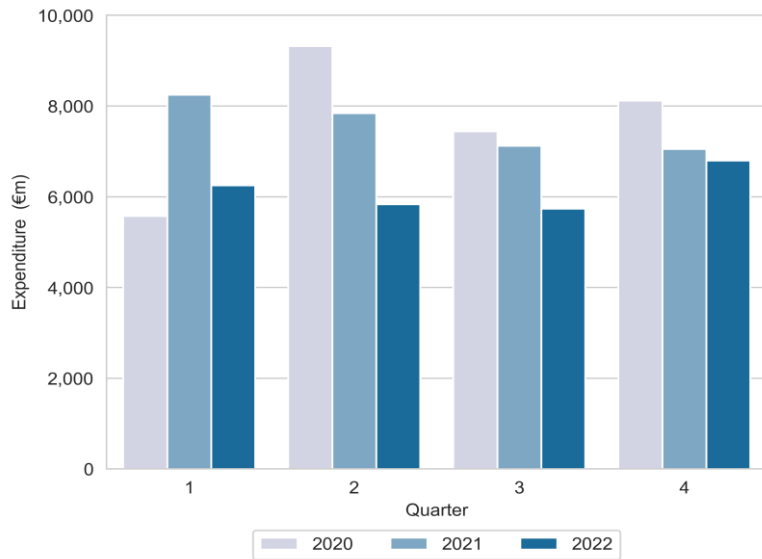
### Other Statistics issued by the Department of Social Protection

The Department also produces additional statistical reports which can be viewed at [www.gov.ie/dsp/statistics](http://www.gov.ie/dsp/statistics)



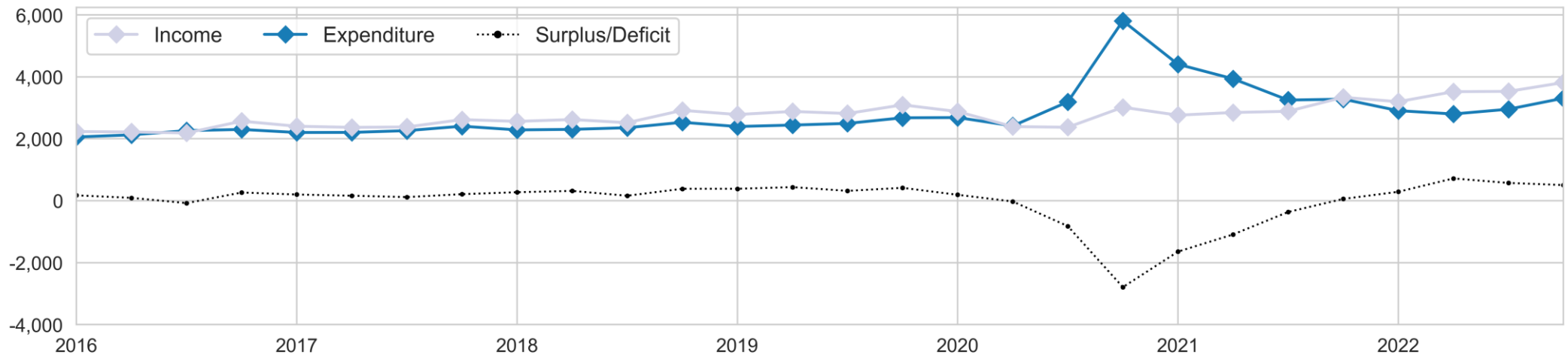
## Overall Expenditure

Figure 1: Expenditure (€m) by quarter



- The overall expenditure of the Department of Social Protection to end-December 2022 was €24.6 billion. This was €5.6 billion, or 19%, lower than the same period in 2021.
- The total expenditure for the Department in Quarter 4 2022 was €6.8 billion, almost €1.1 billion more than in Quarter 3 2022. This increase in expenditure was due to the payment of the Christmas bonus, along with a range of once-off measures announced in Budget 2023.
- Expenditure on Social Assistance schemes between January and December 2022 was an estimated €12.7 billion, a decrease of 18% or €2.7 billion compared to the same period in 2021. This is mainly due to the closure of the Employment Wage Subsidy Scheme in Q2 2022.
- Expenditure on schemes financed from Social Insurance between January and December 2022 was an estimated €12.0 billion, a decrease of €2.9 billion or 19% compared to the same period in 2021.
- The Social Insurance Fund was in surplus to the tune of €5.1 billion at the end of Q4 2022.

Figure 2: Quarterly Social Insurance Fund Income and Expenditure (€m)





## Programme Expenditure

- Expenditure on Working Age Income Support payments for the full year of 2022 was €3.8 billion, a decrease of €3.4 billion (48%) compared to the same period in 2020.
- Spending on Working Age Employment Support schemes was recorded at €1.4 billion to the end of December 2021, a year-on-year decrease of €3.7 billion or 72%.
- Child related payments amounted to €2.9 billion between Q1 and Q4 2022, resulting in a rise of 11% or €274 million from the same period in 2021.
- Pension payments saw an annual increase of €506 million, or 6%, with 12-month expenditure to the end of Quarter 4 2022 estimated at €9.4 billion.
- Year-on-year expenditure on Illness, Disability and Carers rose by 22% to €1.5 billion in Q4 2022. The main driver of this increase was the Budget 2023 Once Off measures, including a payment of €500 to recipients of Carers and Disability schemes.
- Expenditure on Supplementary & Miscellaneous services stood at €411 million in Q4 2022. This is an increase of 48%, or €133 million, compared with the final quarter of 2021. The main reason for this is the once-off fuel bonus of €400 announced in Budget 2023.

Figure 3: Expenditure to date by Social Protection Programme (€): This period and same period last year





## Pensions

- Some 714,486 people received payments across the main Pension schemes in Quarter 4 2022, a year-on-year increase of 3% (21,673) compared to Quarter 4 2021.
- The main increase in pension related payments occurred for the State Pension Contributory (SPC) scheme, which recorded a 4% year-on-year growth in recipients, from 470,814 to 488,587.
- Across the schemes the average weekly payment was €322 for SPC, €298 for SPNC, and €378 for WCP.
- 60% of people on the SPC were male, while females accounted for 60% of SPNC recipients and 84% of WCP recipients.

Figure 4: Pension recipients by year and by scheme

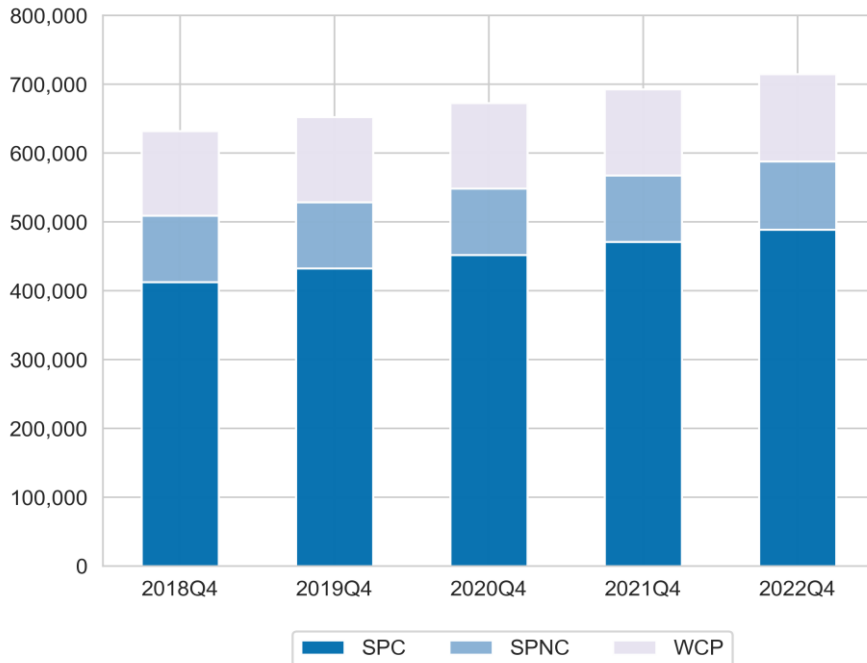
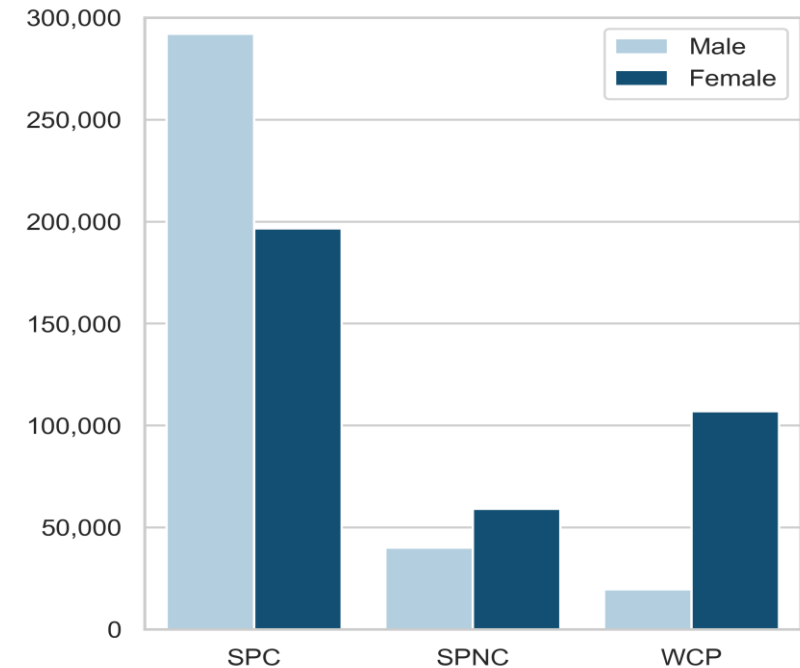


Figure 5: Pension recipients this quarter by sex and by scheme





## Working Age Income Supports

- A total of 171,586 people received Jobseeker’s Allowance in the last Quarter. This is an increase of over 21,600, or 14%, compared to Q4 2021.
- The total number of people in receipt of Jobseeker’s Benefit across Quarter 4 2022 was 67,414, a decrease from 82,229 in the third Quarter of 2022, but a year-on-year increase of 11%, or 6,924, from the 60,490 recipients in the final Quarter of 2021.

- Jobseeker’s Benefit (Self-Employed) recipients stood at 1,307 in the Quarter, an increase of 112%, when compared with the same period in 2021. However, there was a decrease of 4% from Quarter 3 2022. This decrease follows five consecutive quarterly increases.
- There were 29,339 recipients of Maternity Benefit and 7,416 recipients of Paternity Benefit in the quarter. 24,033 people received payments from the Parent’s Benefit scheme, a decrease of 3% on the previous quarter, but up by 40% compared to Q4 2021.

Figure 6: Jobseeker and Pandemic Unemployment Payment recipients

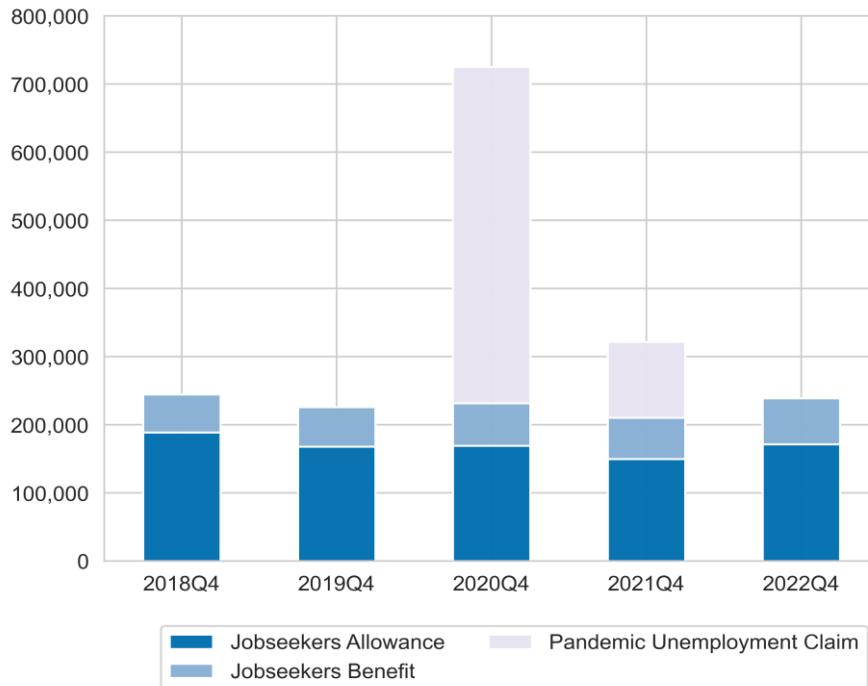
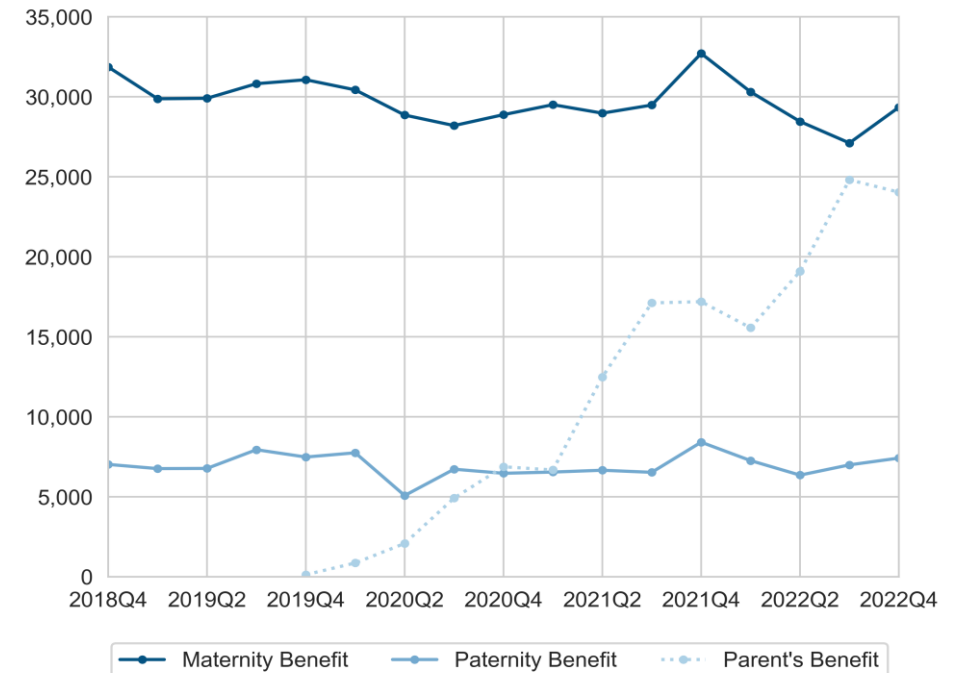


Figure 7: Maternity, Paternity, and Parent’s Benefit recipients

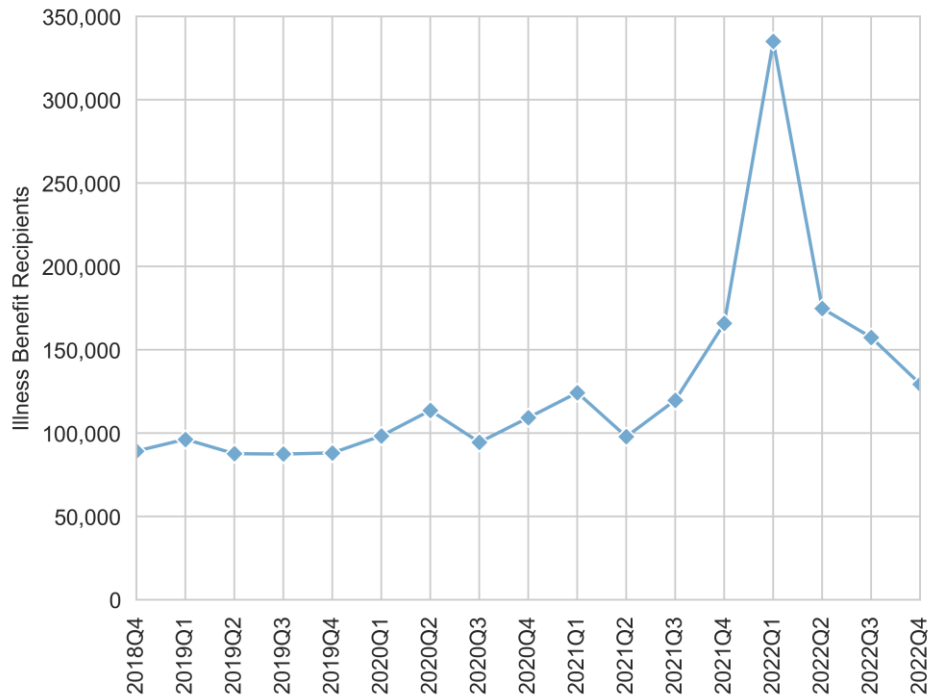




## Illness, Disability, and Caring

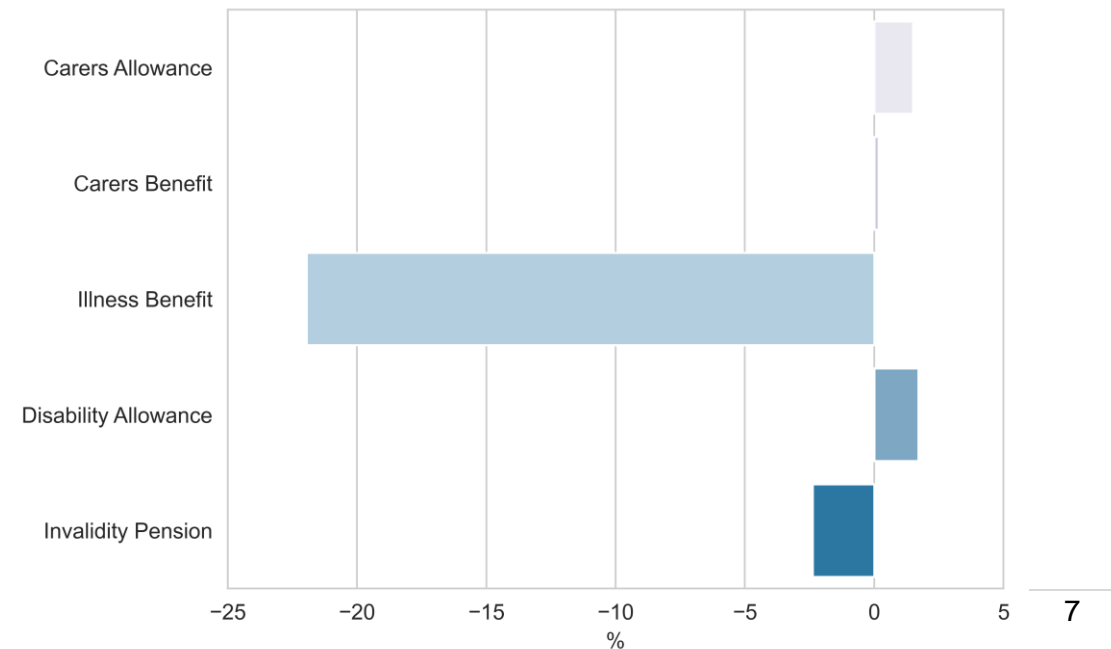
- The number of people paid Illness Benefit in Quarter 4 2022 was 129,466, a decrease of 18% from the previous Quarter, and down by 22% when compared to Quarter 4 2021.
- In the period October to December 2022, there were 57,887 recipients of Invalidity Pension, a decrease of 1% from the previous Quarter. This is the seventh successive Quarter in which there has been a decrease in Invalidity Pension recipients.

Figure 8: Trends in recipient numbers – Illness Benefit



- There were 160,134 people in receipt of Disability Allowance in the fourth Quarter of 2022, an increase of 2% (2,686) on the year before. The average weekly payment received on this scheme was €329.
- The total number of people receiving Carer's payments in Quarter 4 2022 was 98,530, a rise of 1,412, or 1% from Quarter 4 2021. On average, Carer's Allowance recipients received a payment of €251, while Carer's Benefit recipients received a payment of €334.

Figure 9: Annual Change (%) in recipient numbers by scheme

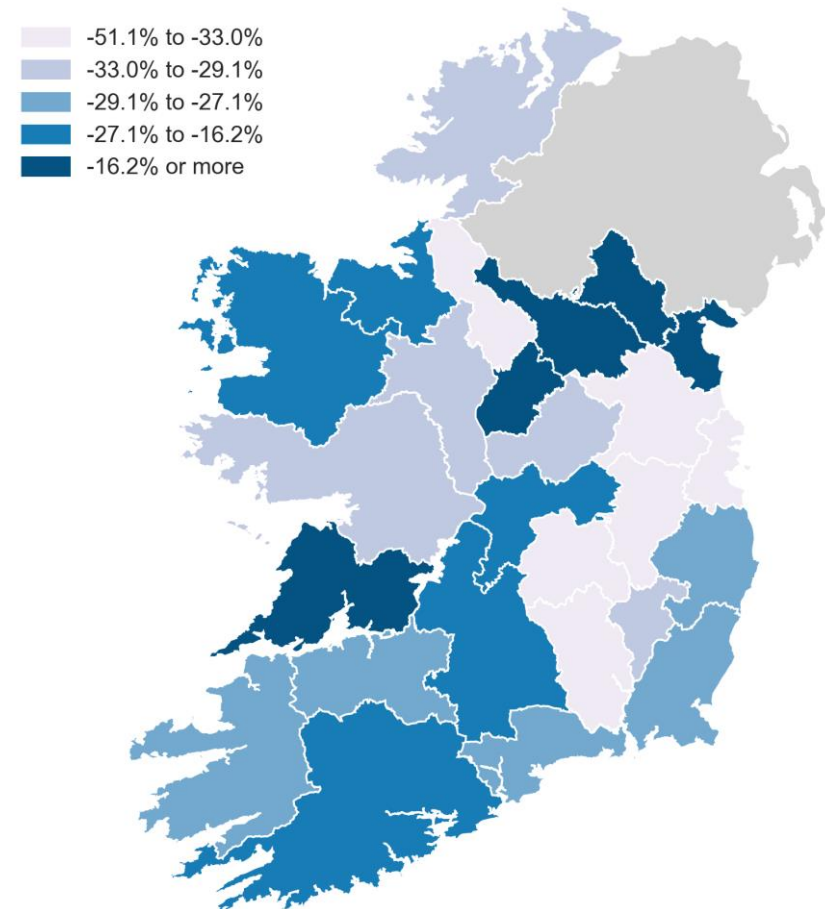




## Children and Supplementary Payments

- In the last quarter, a total of 656,074 families received Child Benefit payments, an increase of 16,949, or 3%, compared to Quarter 4 2021.
- Around 98% (645,838) of recipients of Child Benefit were female, while 2% (10,236) were male.
- The number of people in receipt of the Back to Work Family Dividend fell by 136, or 4%, from Q4 2021 to 3,225. The average payment for this scheme was €86.
- The number of recipients of Rent Supplement in Quarter 4 2022 totalled 9,987, a 31% decrease (-4,433) compared to the fourth quarter of 2021.
- There were 252,233 people receiving direct payments from the Household Benefits Package<sup>[1]</sup> in the quarter, representing a year-on-year increase of 31,878 or 14%.

Figure 10: Annual change (%) in Rent Supplement recipients by county



[1] Includes recipients of cash payments only. Recipients who had payments made directly to their energy supplier as credit against their bills are not included.





## Quarterly Statistical Report

Table 1 Estimated Income and Expenditure in the Department of Social Protection (€m)

	Quarterly										Year to Date				
	Q4 2020	Q1 2021	Q2 2021	Q3 2021	Q4 2021	Q1 2022	Q2 2022	Q3 2022	Q4 2022	Jan-Dec 2020	Jan-Dec 2021	Jan-Dec 2022	Change (2022 v 2021)	% Change (2022 v 2021)	
<b>Funding Basis</b>															
Social Assistance Expenditure (Vote 37) <sup>(a)</sup>	2,313	3,841	3,905	3,871	3,771	3,342	3,034	2,783	3,490	16,352	15,388	12,650	-2,738	-18	
Social Insurance Fund Expenditure <sup>(b)</sup>	5,808	4,406	3,938	3,251	3,280	2,908	2,801	2,956	3,311	14,104	14,875	11,976	-2,899	-19	
Social Insurance Fund Income <sup>(c)</sup>	3,019	2,763	2,849	2,888	3,339	3,198	3,522	3,531	3,817	10,665	11,839	14,068	2,229	19	
Social Insurance Fund Deficit/Surplus <sup>(c-b)</sup>	-2,789	-1,643	-1,089	-363	59	289	721	575	507	-3,439	-3,036	2,092	5,128	169	
Exchequer Subvention	0	1,205	1,100	363	291	0	0	0	0	0	2,929	0	-2,929	-	
<b>Social Protection Programme</b>															
Pensions	2,107	2,130	2,138	2,172	2,491	2,070	2,243	2,438	2,686	8,480	8,931	9,437	506	6	
Working Age Income Supports	2,261	2,579	2,154	1,429	1,068	988	880	914	985	8,357	7,230	3,767	-3,463	-48	
Working Age Employment Supports	1,498	1,332	1,294	1,360	1,184	809	306	144	180	4,716	5,170	1,439	-3,731	-72	
Illness, Disability and Carers	1,185	1,119	1,316	1,156	1,227	1,233	1,420	1,181	1,491	4,770	4,818	5,324	506	11	
Children	642	655	616	678	632	660	627	713	855	2,630	2,581	2,855	274	11	
Supplementary & Miscellaneous	251	283	161	168	278	333	190	167	411	868	890	1,108	218	24	
Administration	176	148	164	160	171	158	168	177	193	636	642	696	54	8	
<b>Total Expenditure <sup>(a+b)</sup></b>	<b>8,121</b>	<b>8,247</b>	<b>7,843</b>	<b>7,122</b>	<b>7,051</b>	<b>6,250</b>	<b>5,835</b>	<b>5,734</b>	<b>6,801</b>	<b>30,456</b>	<b>30,263</b>	<b>24,626</b>	<b>-5,637</b>	<b>-19</b>	



## Quarterly Statistical Report

Table 2 Total Recipients per Quarter and mean payment amount

	Quarter									Mean Payment €
	Q4 2020	Q1 2021	Q2 2021	Q3 2021	Q4 2021	Q1 2022	Q2 2022	Q3 2022	Q4 2022	Q4 2022
<b>Pensions</b>										
State Pension Contributory	451,910	456,128	460,573	466,039	470,814	474,487	479,717	484,822	488,587	€322
State Pension Non-Contributory	96,413	96,453	96,333	96,473	96,489	96,132	96,418	98,331	99,270	€298
Widow(er)'s Contributory Pension	124,453	124,786	125,073	125,254	125,510	125,784	126,149	126,439	126,629	€378
<b>Working Age Income Supports</b>										
Jobseeker's Allowance	169,514	157,280	158,189	157,808	149,956	146,518	166,809	171,823	171,586	€275
Jobseeker's Benefit	61,990	55,594	54,776	61,931	60,490	82,526	81,776	82,229	67,414	€240
Jobseeker's Benefit (Self-Employed)	882	573	436	475	616	942	1,323	1,363	1,307	€303
Pandemic Unemployment Payment	493,868	570,492	487,619	225,116	111,337	84,934				-
Maternity Benefit	28,877	29,501	28,971	29,478	32,704	30,301	28,449	27,108	29,339	€259
Paternity Benefit	6,466	6,544	6,657	6,527	8,410	7,259	6,352	6,992	7,416	€273
Parent's Benefit	6,873	6,675	12,484	17,115	17,191	15,560	19,082	24,806	24,033	€273
One Parent Family Payment	41,940	41,401	41,188	41,791	41,943	42,227	43,897	44,683	45,164	€336
Widows Non-Contributory Pension	1,320	1,315	1,288	1,248	1,199	1,176	1,166	1,155	1,140	€270

Note: Quarterly figures do not represent the numbers and values used by the Department when calculating the Outturn/Estimate for schemes. A yearly calculation is applied to incorporate any seasonal changes and/or adjustments that occur throughout the year on various schemes.



## Quarterly Statistical Report

Table 2 Total Recipients per Quarter and mean payment amount (continued)

	Quarter									Mean Payment €
	Q4 2020	Q1 2021	Q2 2021	Q3 2021	Q4 2021	Q1 2022	Q2 2022	Q3 2022	Q4 2022	Q4 2022
<b>Illness Disability and Caring</b>										
Carer's Allowance	90,684	91,353	91,648	92,675	93,004	93,382	93,185	94,000	94,409	€251
Carer's Benefit	4,268	4,213	4,168	4,347	4,114	4,063	3,964	4,165	4,121	€334
Disability Allowance	154,260	155,601	156,162	156,829	157,448	157,837	158,382	159,308	160,134	€329
Illness Benefit	109,309	124,303	97,900	119,810	165,871	335,004	174,876	157,433	129,466	€240
Invalidity Pension	60,467	60,690	60,195	59,905	59,300	59,196	59,015	58,308	57,887	€342
<b>Children</b>										
Back to Work Family Dividend	4,123	3,788	3,492	3,447	3,361	3,249	3,172	3,264	3,225	€86
Child Benefit	643,159	640,391	641,714	637,311	639,125	638,000	649,142	646,443	656,074	€278
Working Family Payment	52,100	50,322	48,892	49,575	49,859	50,223	50,103	50,991	51,186	€194
<b>Supplementary &amp; Miscellaneous</b>										
Rent Supplement	20,469	20,872	20,056	16,951	14,420	13,042	11,660	10,669	9,987	€116
Household Benefits <sup>[1]</sup>	194,992	200,524	205,470	210,732	220,355	225,012	233,884	238,279	252,233	-

Note: Quarterly figures do not represent the numbers and values used by the Department when calculating the Outturn/Estimate for schemes. A yearly calculation is applied to incorporate any seasonal changes and/or adjustments that occur throughout the year on various schemes.

[1] Includes recipients of cash payments only. Recipients who had payments made directly to their energy supplier as credit against their bills are not included.



## Quarterly Statistical Report

Table 3 Total recipients of the main Social Protection schemes, by quarter and sex

	Quarter									
	Q4 2021		Q1 2022		Q2 2022		Q3 2022		Q4 2022	
	Males	Females	Males	Females	Males	Females	Males	Females	Males	Females
<b>Pensions</b>										
State Pension Contributory	283,985	186,829	285,534	188,953	287,833	191,884	290,253	194,569	291,977	196,610
State Pension Non-Contributory	38,968	57,521	38,910	57,222	39,153	57,265	39,750	58,581	40,127	59,143
Widow(er)'s Contributory Pension	19,219	106,291	19,324	106,460	19,455	106,694	19,550	106,889	19,628	107,001
<b>Working Age Income Supports</b>										
Jobseeker's Allowance	82,004	67,952	79,961	66,557	83,726	83,083	85,230	86,593	86,685	84,901
Jobseeker's Benefit	27,082	33,408	40,094	42,432	39,284	42,492	36,065	46,164	33,564	33,850
Jobseeker's Benefit (Self-Employed)	333	283	511	431	698	625	701	662	732	575
Pandemic Unemployment Payment	61,583	49,754	49,012	35,922	-	-	-	-	-	-
Maternity Benefit		32,704		30,301		28,449		27,108		29,339
Paternity Benefit	8,375	35	7,234	25	6,320	32	6,965	27	7,379	37
Parent's Benefit	5,576	11,615	4,822	10,738	6,081	13,001	8,928	15,878	8,473	15,560
One Parent Family Payment	523	41,420	526	41,701	543	43,354	542	44,141	552	44,612
Widows Non-Contributory Pension	179	1,020	171	1,005	173	993	172	983	169	971



## Quarterly Statistical Report

Table 3 Total recipients of the main Social Protection schemes, by quarter and sex (continued)

	Quarter									
	Q4 2021		Q1 2022		Q2 2022		Q3 2022		Q4 2022	
	Males	Females	Males	Females	Males	Females	Males	Females	Males	Females
<b>Illness Disability and Caring</b>										
Carer's Allowance	21,404	71,600	21,472	71,910	21,286	71,899	21,433	72,567	21,441	72,968
Carer's Benefit	691	3,423	677	3,386	692	3,272	701	3,464	687	3,434
Disability Allowance	88,145	69,303	88,251	69,586	88,378	70,004	88,758	70,550	88,949	71,185
Illness Benefit	66,499	99,372	148,046	186,958	66,668	108,208	60,420	97,013	46,802	82,664
Invalidity Pension	24,262	35,038	24,158	35,038	24,061	34,954	23,688	34,620	23,447	34,440
<b>Children</b>										
Back to Work Family Dividend	983	2,378	943	2,306	904	2,268	913	2,351	843	2,382
Child Benefit	9,983	629,142	9,865	628,135	10,017	639,125	9,779	636,664	10,236	645,838
Working Family Payment	17,563	32,296	17,380	32,843	16,861	33,242	16,757	34,234	16,337	34,849
<b>Supplementary &amp; Miscellaneous</b>										
Rent Supplement	7,399	7,021	6,695	6,347	5,911	5,749	5,347	5,322	4,979	5,008
Household Benefits <sup>[1]</sup>	112,507	107,848	114,665	110,347	118,622	115,262	120,456	117,823	127,380	124,853

[1] Includes recipients of cash payments only. Recipients who had payments made directly to their energy supplier as credit against their bills are not included.



## Notes

### Methodology and quality considerations

The expenditure details in this report are based on estimates. The finalised expenditure information can be viewed in the latest Appropriation Accounts for Vote 37<sup>1</sup>, or the latest Annual Statistics Report<sup>2</sup>. Note that the estimated expenditure figures in this report may not add up exactly due to rounding.

When comparing to a previous quarter or previous year, the comparison can sometimes be impacted by the number of pay days that fall in a particular quarter. This may account for skews in expenditure and/or recipient totals in certain quarter periods.

The recipient totals were extracted from the Department's administrative systems, and include people who were issued at least one payment for a particular scheme in a given quarter. In the majority of cases the date in which the payment was made reflects the entitlement period .i.e. when the payment was issued the recipient's claim was open. However payments can be issued in respect to different entitlement periods (arrears payments). The figures produced in this report are calculated with reference to the date the payment was issued, and are therefore inclusive of arrears payments. Note that a person can be in receipt of payment for more than one scheme.

The recipient figures quoted in the Annual Statistics report are not directly comparable to the numbers shown in this publication. The Annual Statistics report counts only those awarded and in receipt of payment at a point in time (December 31<sup>st</sup>) to ensure comparability with a series of statistical reports dating back to 1983.

### Glossary of Terms

**Recipient:** A person receiving at least one Social Welfare payment in a given quarter period.

**Social Assistance:** payments funded from voted expenditure, which cover people who do not have sufficient PRSI contributions to qualify for the equivalent social insurance payments, or where entitlement to the social insurance payment has expired. These payments are typically means-tested.

**Social Insurance Fund:** a current account and an investment account managed by the Minister for Social Protection and the Minister for Finance, respectively. The current account consists of monies collected from people in employment, self-employment, and employer contributions. This money is then used to fund social insurance payments.

### Open Data

Each report in this series will be available in formats consistent with the Open Data Technical Framework<sup>3</sup>. Any open data produced by the Department will be accessed through the National Open Data portal at: <https://data.gov.ie/>

### Revisions

Revisions may occur as a result of changes in methodology, an update to a series or errors in the original data. Any significant revisions will be footnoted in the report and will describe the reason for the change and its impact on comparability (.i.e. with other schemes or over time).

1. Published by the Office of the Comptroller and Auditor General at: <https://www.audit.gov.ie/en/find-report/publications/appropriation%20accounts/>  
2. Available at: <https://www.gov.ie/dsp/statistics>  
3. Available at: <https://data.gov.ie/pages/opendatatechnicalframework>