



## Marine Notice No. 13 of 2023

*Notice to all Shipowners, Fishing Vessel Owners, Agents, Shipmasters, Skippers, Fishers,  
Yachtsmen and Seafarers*

### INFOMAR Survey Plan for 2023 Celtic Sea, Atlantic Ocean, and Irish Sea

#### 1. Notice of Activity

The Department of Transport has been advised by Geological Survey Ireland (GSI) and the Marine Institute that hydrographic and geophysical survey operations will be undertaken by INFOMAR in the Celtic Sea, Atlantic Ocean, western coastal areas and Irish Sea areas between **March 2023** and **November 2023**, subject to weather and operational constraints as follows:

Survey Vessel	Current Schedule	Location
RVs Keary, Geo, Lir, Galtee and Mallet (Geological Survey Ireland)	March – November 2023	Celtic Sea, Atlantic Ocean & Southwest coast
RV Tom Crean (Marine Institute)	11/04/2023 - 25/04/2023 (15 days)	Celtic Sea & Atlantic Ocean
RV Tom Crean (Marine Institute)	13/05/2023 - 28/05/2023 (16 days)	Celtic Sea & Atlantic Ocean
RV Tom Crean (Marine Institute)	22/06/2023 - 08/07/2023 (17 days)	Celtic Sea & Atlantic Ocean
RV Tom Crean (Marine Institute)	29/08/2023 - 11/09/2023 (14 days)	Celtic Sea & Atlantic Ocean
RV Tom Crean (Marine Institute)	13/10/2023 – 05/11/2023 (25 days)	Celtic Sea & Atlantic Ocean

**Figure 1** in the Appendix depicts the overview of the 2023 INFOMAR survey areas.

## 2. Location of planned operations

Generic coordinates of where survey operations are expected to take place are provided below. Detailed coordinates of each survey polygon can be provided on request.

RVs Keary, Geo, Mallet, Galtee and Lir are expected to carry out survey operations in three areas, as follows:

- In the **Atlantic Ocean**, west of counties Kerry, Clare, Galway and Mayo (see Figure 2 in the Appendix).
- An offshore area **NW of Belmullet**, County Mayo, and **western coastal areas** stretching from Galway Bay to Malin Head, County Donegal (see Figure 3 in the Appendix).
- It is anticipated that these vessels will also survey in the **Irish Sea** adjacent to the Ireland/UK border from east of County Dublin to east of County Wexford and in coastal areas of County Dublin (see Figure 4 in the Appendix).

The **Atlantic Ocean site** east of the 30 NM limit is denoted by the purple-coloured hatched area in **Figure 2**. The survey area NE (near Achill Island) and SW (west of Kerry Head) coordinates are provided below:

Location	Latitude	Longitude
NE Corner	54° 00.635'N	-010° 12.816'W;
SW Corner	52° 23.646'N	-011° 17.830'W

The area **NW of Belmullet**, County Mayo, is denoted in purple hatching in **Figure 3** and is bounded by the following coordinates:

Location	Latitude	Longitude
NE Corner	54° 41.337'N	-009° 46.761'W
SE Corner	54° 21.197'N	-010° 00.419'W
NW Corner	54° 40.266'N	-010° 18.804'W
SW Corner	54° 20.967'N	-010° 29.170'W

**Inshore survey operations** will potentially take place **anywhere along the coast** between NW County Mayo and Malin Head, County Donegal. Detailed coordinates of these areas can be provided upon request.

The offshore **Irish Sea area** is denoted in purple hatching in **Figure 4** and bounded by the following coordinates:

Location	Latitude	Longitude
NE Corner	53° 31.302'N	-005° 22.654'W;
SE Corner	52° 24.006'N	-005° 22.808'W
NW Corner	53° 31.421'N	-005° 26.854'W

SW Corner	52° 10.653'N	-005° 55.628'W
-----------	--------------	----------------

RV Tom Crean is expected to carry out survey operations in the **Celtic Sea**, south of the 30 NM limit and potentially in the **Atlantic Ocean** west of counties Kerry, Clare, and Galway, west of the 30 NM limit during the dates outlined above.

Specifically, RV Tom Crean is expected to carry out survey operations in the Celtic Sea, within the orange hatched area of **Figure 5** in the Appendix, bounded by the following coordinates:

Location	Latitude	Longitude
NE Corner	50° 55.451'N	-009° 34.461'W
SE Corner	49° 10.790'N	-009° 59.407'W
NW Corner	51° 01.062'N	-011° 11.361'W
SW Corner	49° 06.348'N	-011° 08.219'W

RV Tom Crean will also undertake survey operations in the Atlantic Ocean, within the orange hatched area of **Figure 6** in the Appendix, bounded by the following coordinates:

Location	Latitude	Longitude
North Apex	54° 07.147'N	-010° 47.992'W
East Apex	53° 13.075'N	-010° 07.199'W;
SE Corner	52° 30.384'N	-010° 36.109'W
SW Corner	52° 25.955'N	-011° 44.689'W
West	53° 05.414'N	-011° 53.624'W

### 3. Details of Survey Vessels

The Marine Institute will operate the following vessel:

- RV Tom Crean (call sign **EIYX3**)

The vessel will display appropriate lights and markers. It will be listening on channel 16 throughout the course of the survey. The vessel will be towing a **magnetometer sensor** with a single cable of up to 200 metres in length and a **Moving Vessel Profiler cable** of variable length up to a maximum of 200 metres.

Geological Survey Ireland (GSI) will operate five vessels:

- RV Keary (call sign **EI-GO-9**);
- RV Geo (call sign **EI-DK-6**);
- RV Mallet (call sign **EI-SN-9**);
- RV Lir (call sign **EI-HI-2**); and
- RV Galtee (call sign **EI-2F-G**).

These vessels will display appropriate lights and markers. The vessels will be listening on channel 16 throughout the course of the survey.

#### 4. Purpose of survey

The INFOMAR Programme (Integrated Mapping for the Sustainable Development of Ireland's Marine Resource) is a jointly managed seabed mapping initiative between Geological Survey Ireland (GSI) and the Marine Institute, funded by the Department of the Environment, Climate and Communications. Expanding upon its operational predecessor, the Irish National Seabed Survey, it has a focus on three sub-programme areas, namely:

- Data Acquisition, Management, and Interpretation;
- Data Exchange and Integration; and
- Value Added Exploitation

Covering some 125,000 square kilometres of underwater territory, INFOMAR will produce integrated mapping products covering the physical, chemical, and biological features of the seabed.

During the current year of the second phase of INFOMAR (2016-2026), operations are planned to take place within the bays, harbours and offshore areas detailed in the Figures in the Appendix.

#### 5. Additional information

INFOMAR Charts and information on a bay basis can be found on the website <http://www.infomar.ie>. Images, Bathymetry, Backscatter, Shaded Relief, Classification .pdfs are available.

INFOMAR offshore & Geological Survey Ireland onshore digital data can be downloaded via <https://jetstream.gsi.ie/iwdds/index.html>.

#### 6. Contact Details

Enquiries regarding the contents of this Marine Notice, or any relevant matters, should be directed to:

- **INFOMAR** by email to [info@infomar.ie](mailto:info@infomar.ie);
- **Marine Institute** by phone at +353 91 387200;
- **Geological Survey Ireland** by phone at +353 1 6782896.

All mariners are reminded of their responsibilities under the **International Collision Regulations** and of [Marine Notice No. 17 of 2007](#), which gives general advice in relation to

the activities of vessels engaged in survey work for hydrographic, seismic, fishing research and underwater operations.

The International Regulations for Prevention of Collisions at Sea (COLREGS) are implemented in Irish law by the *Merchant Shipping (Collision Regulations) (Ships and Water Craft on the Water) Order 2012* [S.I. No. 507 of 2012] and the *Signals of Distress (Ships) Rules 2012* [S.I. No.170 of 2012]. [See Marine Notice No. 06 of 2013](#). These Statutory Instruments may be purchased by mail order from Government Publications, Office of Public Works, 52 St. Stephen's Green, Dublin 2. Tel: (01) 6476834/1890-213434. They are also available online at: [www.irishstatutebook.ie](http://www.irishstatutebook.ie)

Note: Marine Notices are issued purely for maritime safety and navigation reasons and should not be construed as conferring rights or granting permissions.

Irish Maritime Administration,  
Department of Transport,  
Leeson Lane, Dublin 2, D02 TR60, Ireland.

24/02/2023

Encl: Appendix Figure 1-6

For any technical assistance in relation to this Marine Notice, please contact:  
The Marine Survey Office, email: [MSO@transport.gov.ie](mailto:MSO@transport.gov.ie)  
For general enquiries, please contact the Maritime Safety Policy Division, email:  
[MaritimeSafetyPolicyDivision@transport.gov.ie](mailto:MaritimeSafetyPolicyDivision@transport.gov.ie)  
Written enquiries concerning Marine Notices should be addressed to:  
Dept. of Transport, Maritime Safety Policy Division, Leeson Lane, Dublin 2, D02 TR60, Ireland.  
email: [MarineNotices@transport.gov.ie](mailto:MarineNotices@transport.gov.ie) or visit us at: [www.gov.ie/transport](http://www.gov.ie/transport)

# Appendix

Figure 1: Overview of 2023 Infomar survey area

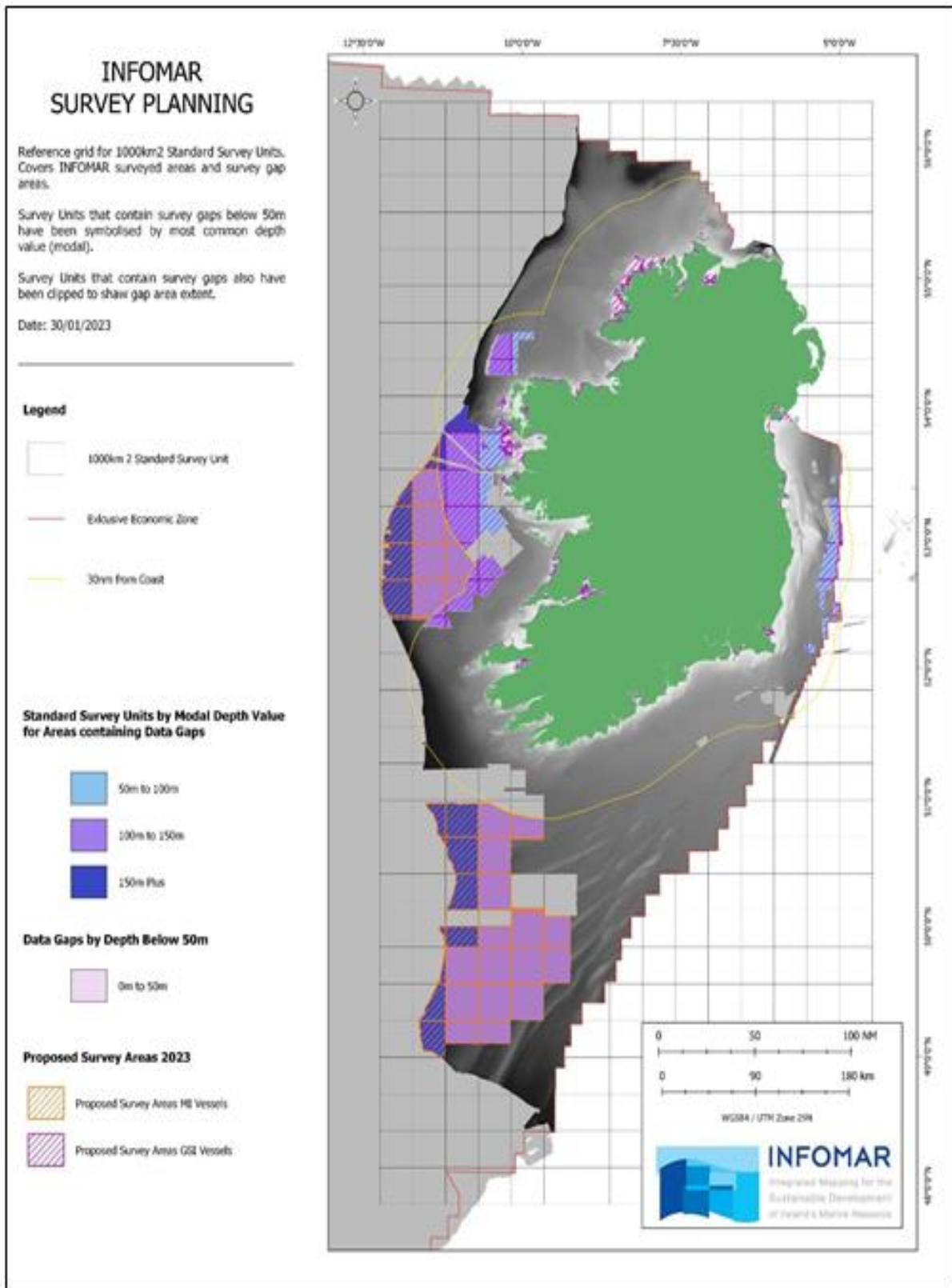


Figure 2: RVs Keary, Geo, Mallet, Galtee and Lir Atlantic Ocean survey areas (Purple).

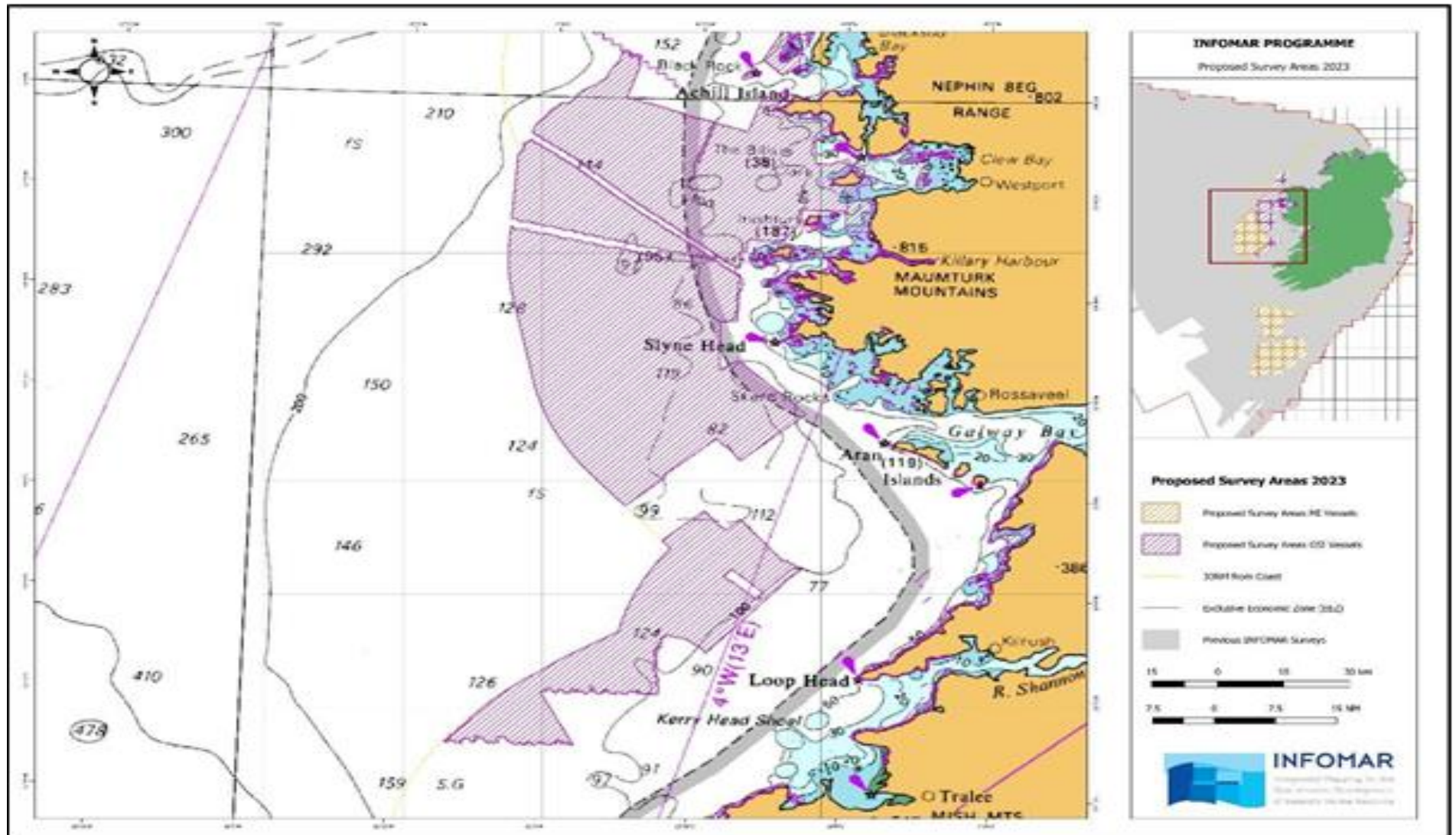




Figure 3: RVs Keary, Geo, Mallet, Galtee and Lir Atlantic Ocean North survey areas (Purple).

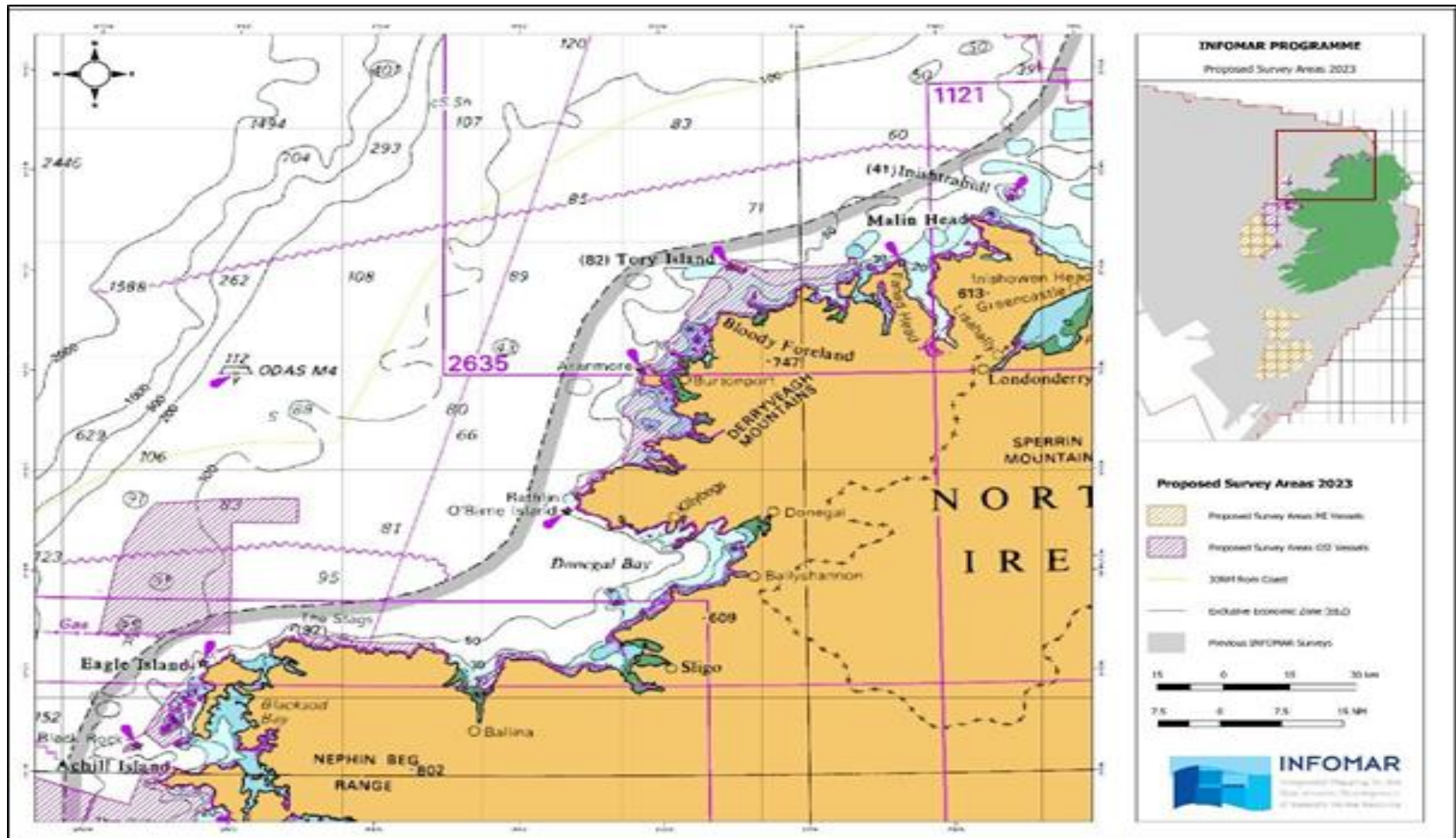




Figure 4: RVs Keary, Geo, Mallet, Galtee and Lir Irish Sea survey areas (Purple).

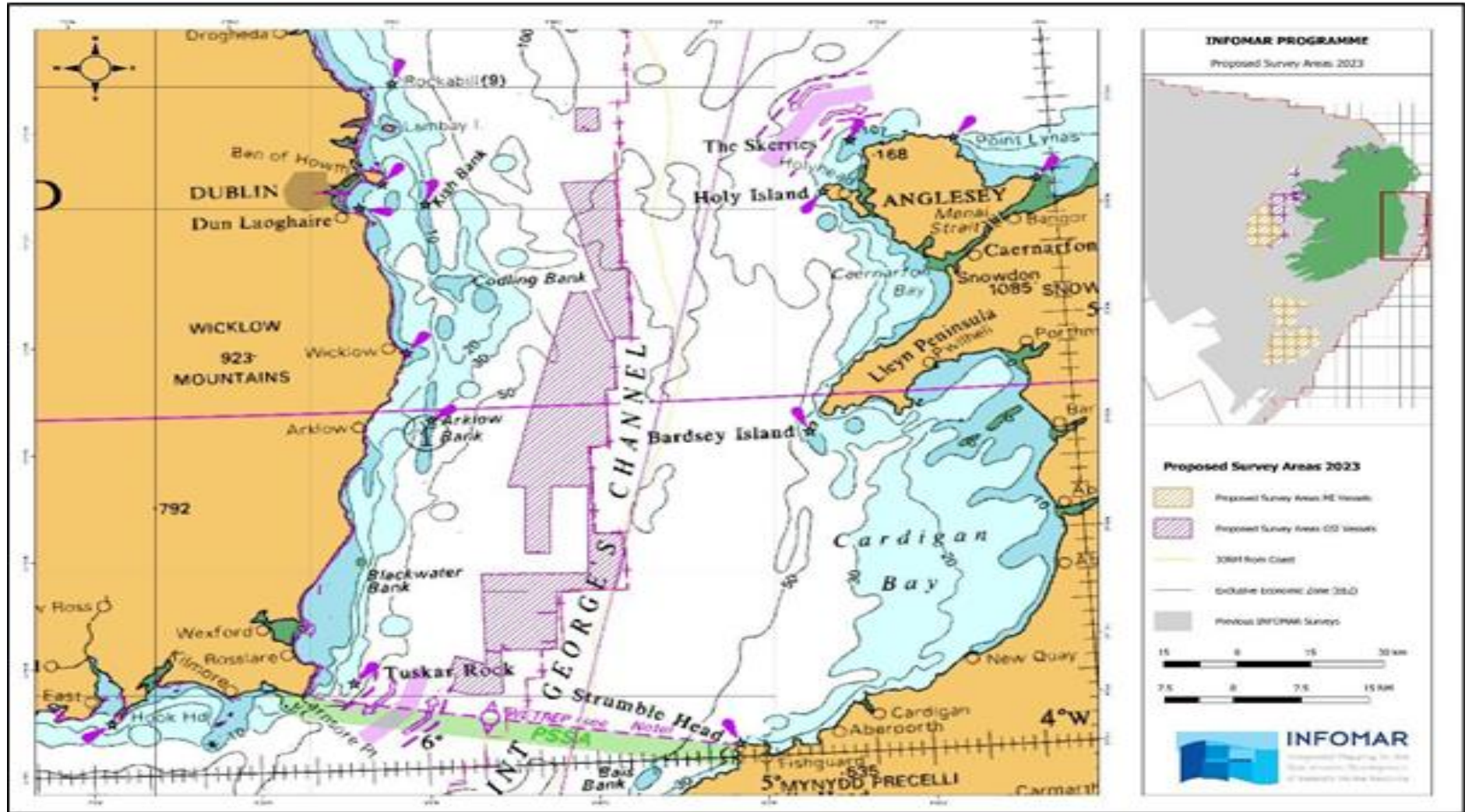


Figure 5: RV Tom Crean, Celtic Sea survey area (Orange).

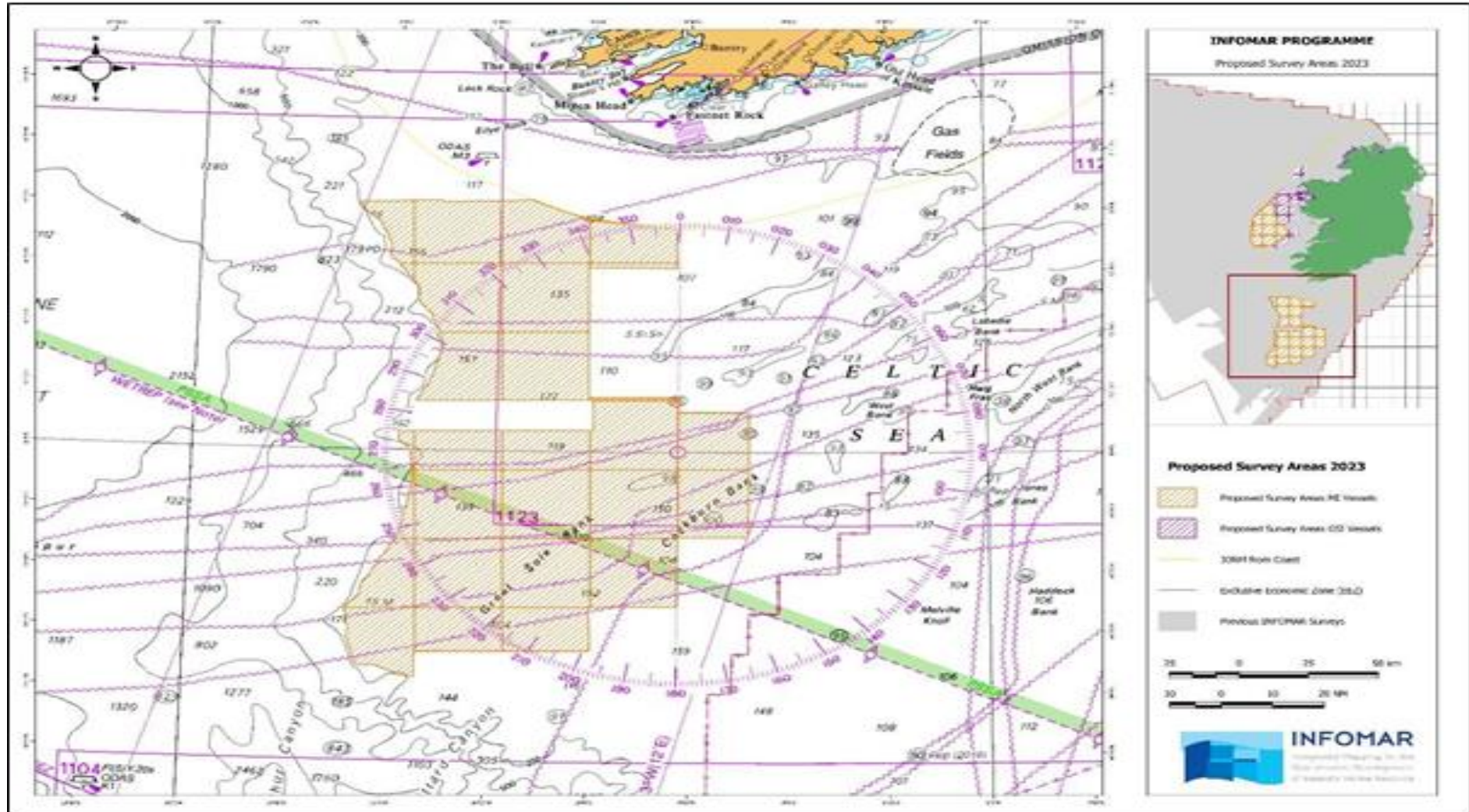




Figure 6: RV Tom Crean Atlantic Ocean survey area (Orange & Purple).

