



Provision and Management of Recreation Facilities and Infrastructure 2021

Report to the Department of Rural
and Community Development



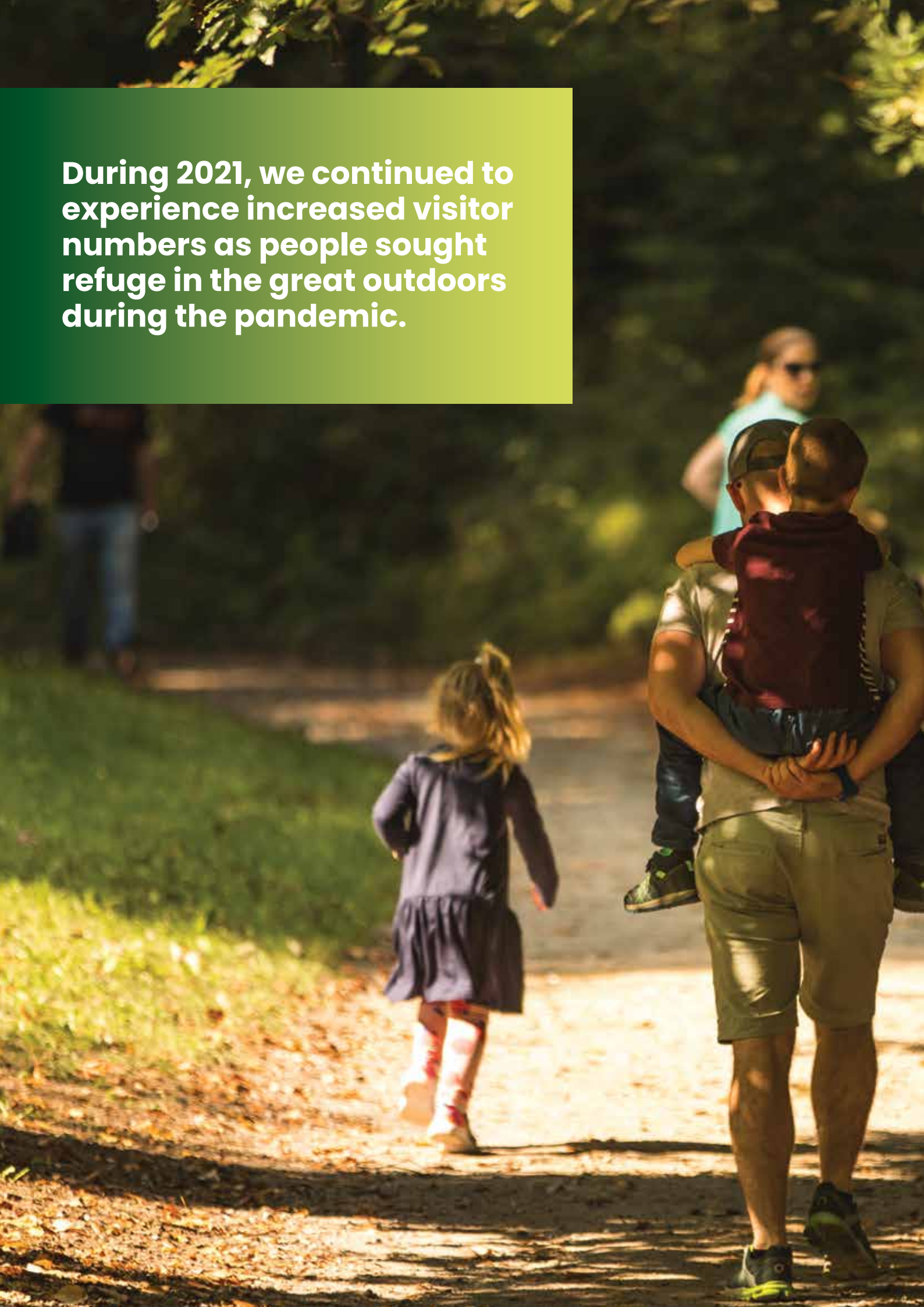
An Roinn Forbartha
Tuaithe agus Pobail
Department of Rural and
Community Development



COILLTE

GROW · TRANSFORM · SUSTAIN

During 2021, we continued to experience increased visitor numbers as people sought refuge in the great outdoors during the pandemic.



Introduction

Forest for People

Coillte is responsible for 440,000 hectares of forest and lands. Hosting 12 Forest Parks, 300 plus recreation areas and more than 3,000 km of waymarked trails, Coillte is Ireland's largest provider of Outdoor Recreation Infrastructure.

From our Forest Parks to the smallest neighbourhood forest, our property sees an estimated 25m individual visits annually from local and overseas recreation visitors.

During 2021, we continued to experience increased visitor numbers as people sought refuge in the great outdoors during the pandemic. Strong visitor levels continue today and underline the important role our forests play in supporting peoples' mental and physical wellbeing along with the importance of Coillte continuing to deliver 'forests for people'. (Taken from Coillte's Annual Report, 2021).

Studies have showed that access to green-space, woods, forest, hills and water is absolutely vital to the long-term mental and physical health and well-being of the population. This was highlighted in 2020 during lockdown, when Irish residents flocked to the forests closest to their doorstep.

As well as the individual benefits mentioned above, Coillte provide opportunities for local economic benefit through our partnerships with many stand-alone businesses across our estate. Many of these local businesses work hand in hand with Coillte's recreation infrastructure for example coffee/food kiosks and bike hire at some of our popular recreation areas.

In many locations, Coillte provide the platform for businesses to run successfully, with examples such as bike hire businesses at Ballyhoura (Limerick), Ticknock (Dublin) and Ballinastoe (Wicklow). Cafés have been established at Ards Forest Park (Donegal), Curragh Chase Forest Park (Limerick) and Donadea Forest Park (Kildare) and various other sites across the country. Coillte also provide access to our lands under permits/license agreements for those operating as outdoor recreation guides and instructors.

Coillte's vast number of outdoor recreation facilities throughout the country creates the foundation for all these rural businesses to operate. Our ongoing management and maintenance of our forests, parks, trails, picnic areas, playgrounds attract a steady stream of visitors thus creating the support needed for these businesses.

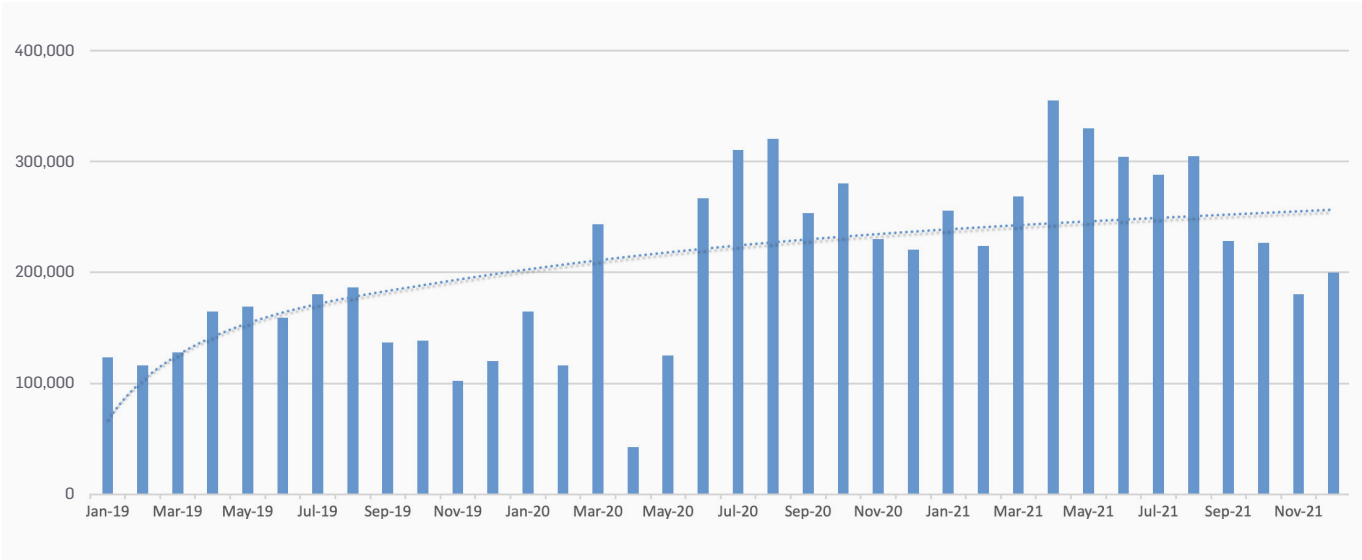
The Covid-19 pandemic forced people to pause and look at life from another perspective, this newfound perspective brought attention to the great outdoors. Outdoor engagement and activity surged during 2020 and continued into 2021. Coillte offers visitors extensive and easy access to outdoor recreation infrastructure from our open access policy, forest roads, way marked trails to our forest parks.

The importance of managing and maintaining high-quality, enjoyable and safe access to the outdoors continues to be a priority for Coillte as more and more turn to active outdoor recreation in the future.

However, the provision of recreation as a service incurs significant costs to Coillte as the provider, not only in terms of capital costs, but also in the cost of management and maintenance. There is an equivalent of 23 full-time staff providing the recreation service that Coillte offers to the public. Recognising this fact and the important public good that Coillte provides in this area, the Department of Rural and Community Development and Coillte entered into a Memorandum of Agreement in 2017, for a five-year programme to advance our shared aim of developing and maintaining recreational infrastructure and facilities for the public good. This has been a successful relationship and Coillte are hopeful at the prospect of renewing this agreement for another 5 years, which will secure the continued maintenance, future upgrades and enhancements to our much-loved recreational offering.

This report shows that all work carried out with the support of DRCD in 2021, was done to a high standard and enhanced Coillte's offering to visitors and recreation users, thus providing a valuable service to the public.

VISITOR TRENDS 2019 TO 2021



Note: This chart shows visitor numbers at 47 selected Coillte sites. It is not a full count, but is a reliable indicator of visitor number growth across the entire Coillte estate from 2019 to 2021.

Note: The doubling of average visitor numbers from start 2019 to end 2021.

Significant demand for recreation across the Coillte estate continued during 2021 with visitor numbers increasing by more than 25% at our most popular recreational sites. We responded to that demand by investing almost €3.5 million in partnership with the Department of Rural and Community Development in the maintenance and enhancement of recreation facilities across the estate.

Continued increase in visitor numbers

Visitor numbers continued to rise in 2021, however with additional funding for capital projects from the Department, Coillte were able to address many of the impacts identified during the pandemic when visitor numbers skyrocketed. Managing and maintaining high-quality, enjoyable and safe access to our outdoor recreation spaces and forests is very important and Coillte continue to review and address issues that were identified in 2020. They include were:

- a. A lack of car-parking availability at all sites, not just at the most popular destinations
- b. an absence or lack of toilet facilities at forest sites and subsequent impact on the surrounding environment
- c. a need for improved trail surfaces and facilities to cater for access to outdoor recreation for those with limited ability
- d. the need to improve visitor services at many sites including refreshments, information, and other services such as bike hire, etc..
- e. lack of information on opportunities for outdoor recreation 'from the doorstep' to cater for local residents in their local area.

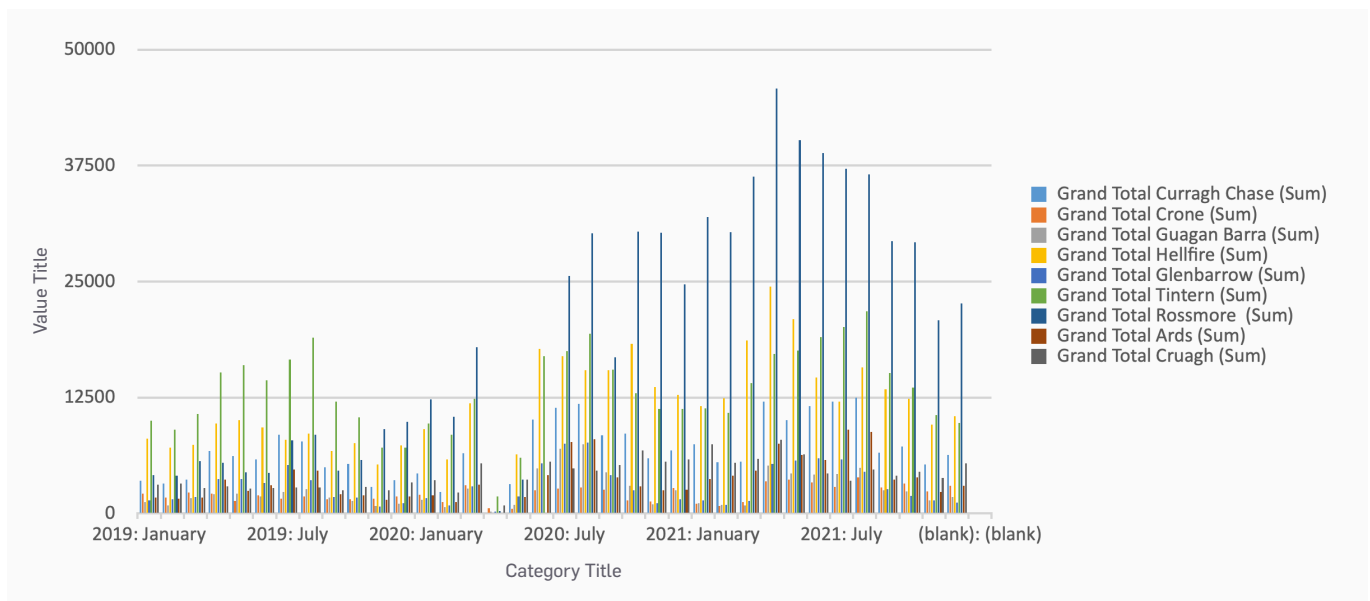
Our forests have the ability to absorb significant visitor numbers, however trailhead facilities as mentioned above and access need to be addressed and improved Coillte believes that there is capacity and willingness to close these gaps at our forest sites and recreation areas, if supported to do so in the future.

As mentioned above, Coillte have and will continue to partner with many privately-run, small, local businesses to provide a platform for visitor services, however good, safe and enjoyable recreation infrastructure is fundamental to any solid offering to the public.

Our ambition is to work with Department of Rural and Community Development and others to do this over the coming years.

The development of the **National Outdoor Recreation Strategy** by Comhairle na Tuaithe, currently underway, will seek to address these issues not just on Coillte lands but on other publicly and privately-owned lands also.

COMPARISON OF SELECTED SITES FROM 2019 TO 2021



The above chart shows a full count for all visitors at each selected site by year. Note the continued upward growth in visitor numbers as the country emerged from Covid lockdown and as we ventured further out into our outdoor recreation sites and forests.

Annual recreation maintenance programme – 2017 to 2021

The annual programme is agreed between Coillte and the Department of Rural and Community Development (DRCD) and up to a maximum of €2m per annum is funded by the DRCD to cover a maximum of 80% of Coillte's total costs.

Under the programme delivered in 2021, the key deliverables were:

- Maintenance and upgrading of the National Waymarked Ways
- Maintenance and upgrading of National Looped Walks, key local trails, forest parks, picnic areas and off-road cycle trails
- Maintenance of other recreation infrastructure such as boardwalks, bog-bridges, gates, signage, stiles and waymarking
- Managing the impacts of the continued increase in visitor numbers – such as expanding car-parking areas where possible and increased visitor information and signage at all recreation sites
- The national trails register and maintaining the database in conjunction with Sport Ireland Outdoors
- Facilitating development of mountain access routes
- Providing and maintaining visitor information on social media channels and online via Coillte's website to the public on recreation sites and trails, trail closures, diversions and upgrades

Our programme is consistent with delivering on Comhairle na Tuaithe strategies for improved access to walking and cycling, innovative activities and attractions and improving the availability of recreation infrastructure and facilities in the outdoors.

Delivering the annual programme

The work within Coillte's recreation team focusses mainly on the continual improvement of trail infrastructure and recreation sites on the forest estate across the country. This entails assessment of trails each year and preparation of maintenance plans for each trail or site.

From the maintenance plans, work packages are prepared, and contract or internal staff are engaged to carry out the works. This is overseen by our forest management staff around the country and checked by the trail managers from the recreation team.

In 2021, maintenance work was carried out on almost 300 recreation sites and long-distance trails. This included maintenance on 20 of the National Waymarked Ways, 5 off-road cycle trail centres, trails and facilities at 12 of Coillte's forest parks and more than 140 other local trails and forest sites across the forest estate. Note that the works carried out to Coillte's main recreation sites and trails are listed later in this report, but many other smaller forest properties are used by local residents on a daily and weekly basis. The works at these sites are generally minor repairs / maintenance and the sites are too numerous to list in this report. In many cases, improving informal car-parking facilities was carried out to provide extra capacity as demand surged

Management of recreation-related issues by recreation staff

The Recreation team cover huge areas, each covering several counties. As well as overseeing Coillte's own recreation programme, the team are regularly approached by local community groups, local development partnerships and County Councils to develop new recreation offering solely on Coillte property or as part of a larger project. Where possible, the team assist these groups in the creation or enhancement of this recreation infrastructure.

Coillte have always engaged with local communities and have very positive and successful relationships across the country. Much of the funding for these initiatives is sourced from DRCD through Rural Development Funding/ LEADER programme by community groups and others.

Since the inception of DRCD's Outdoor Recreation Infrastructure Scheme (ORIS), many groups have looked to Coillte as the obvious choice for recreation development. As ORIS funding was granted to these groups, the recreation team in Coillte managed and assisted with delivery of valuable new infrastructure – trails, trail furniture, signage, etc. Valuable resources are brought to the projects from these sources and through working closely with the recreation team in Coillte, many new and improved recreation facilities for the public are delivered.

These projects are vital in ensuring that local initiatives from community groups, partnership companies, Rural Recreation Officers and others are facilitated on Coillte lands. Coillte have established a Memorandum of Understanding and licence format to allow community groups to access forest lands for these projects and to drawdown funding under DRCD-funded schemes.



Case Studies

TINTERN AND JENKINSTOWN CAR PARK UPGRADES

Two very popular sites in the Southeast, Tintern, Co. Wexford and Jenkinstown, Co. Kilkenny have seen a huge increase in visitor numbers so more parking and facilities were required.

The project was to upgrade both car parking areas. Jenkinstown was resurfaced, lined and additional spaces were created. Tintern lacked proper parking and only had lay-by spots on each side of the access road to Tintern Abbey. A new purpose-built car park was established and included the installation of a multi access dry toilet.

The upgrade works in Tintern and the hard work put in by the local community group on the trails contributed to them winning the RDS Community Woodlands award for 2021.



Jenkinstown entrance and car park.



Tintern car park with dry toilet and safe access route to same.



Proud winners of the RDS Community Woodlands Award.

DEVIL'S GLEN, ASHFORD, CO. WICKLOW



A very old and popular recreation site, mentioned in the Victorian Grand Tour of Wicklow Guide, there you could still hear the devils roar of the Waterfall giving the site its name, before the river was calmed by building the Vartry reservoir.

The funding works in Devil's Glen consisted of enhancing and enlarging the car parking area at the main entrance and upgrading the road down to the main car park.

The works also included replacing 3 foot bridges along the popular walk down to the waterfall which had stood the test of time, but needed to be completely replaced.

BALLYHOURA MTB TRAIL CENTRE, CO. LIMERICK & CORK



Ballyhoura is the largest and the oldest mountain bike trail network in Ireland. It opened in 2007 and has since then been a flagship for local villages and towns, creating local economic activity in food, accommodation and retail spending, as it receives approx. 40,000 annual visitors. As well as a vast network of MTB trails, it also offers walking trails and a bike centre.

Many of the trail sections underwent extensive maintenance in 2020 and 2021 was equally busy, with a complete upgrade of The Brown Trail (17kms).

The trail centre and surrounding villages and businesses will benefit greatly from addition of new trails across the mountain range in 2002, as part of the RRDF-funding allocated to the National Trail Centres by DRCD. While these trail systems create significant visitor spending in local areas, they have much higher maintenance costs to keep in a durable and safe condition. The benefit of having DRCD funding to maintain them in a great condition keeps visitors returning again and again.

DEVIL'S BIT TRAIL UPGRADE



Devil's Bit is a hugely popular site. It consists of a short loop and a steep hike, which offers spectacular views. The upper steep section was extremely poor and in serious need of repair. Trail improvements works were carried out to make this section safe.

ROSTELLAN FOREST LOOP



Rostellen is located near Aghada in East Cork. The wood has large coastal frontage with view that include Cobh and Whitegate refinery. Rostellan, is a relatively flat site and suitable for walks of all ages and abilities and one of the forest loops underwent a major upgrade in 2021.

SPRIGGING SCHOOL – CASTLEFREKE



This looped walk begins at the restored Sprigging School and takes you along the riverbank through approximately ½ hectare of wet woodland. This is a haven for biodiversity. The riverbanks and road were badly damaged after a storm in 2021 and were in urgent need of repair. This repair work is a great example of collaborative work. Coillte worked closely with Cork County Council, Inland Fisheries, NPWS, Rathbarry Tidy Towns and local businesses to ensure the road, riverbank and nature trail were repaired and upgraded.



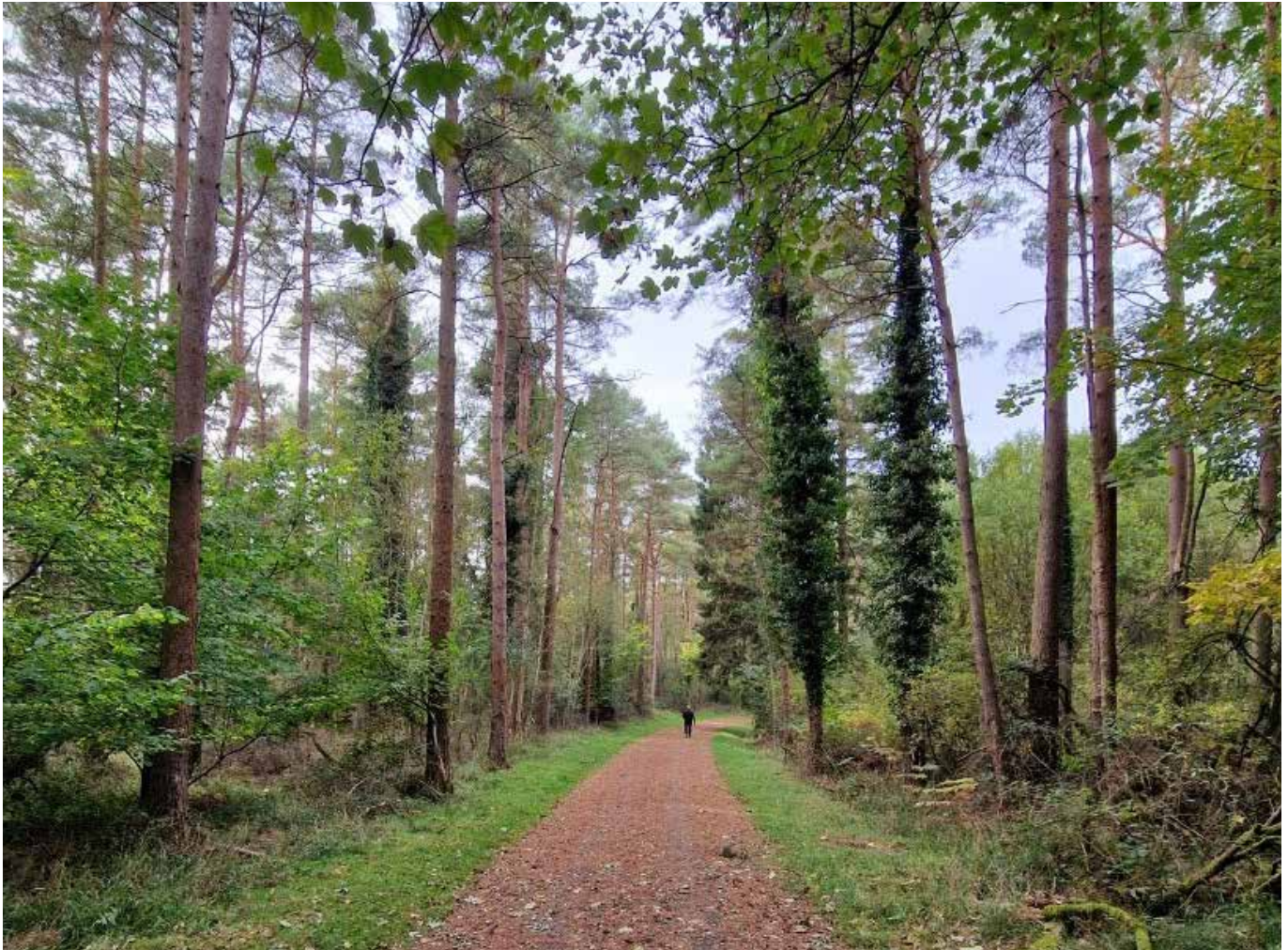


BUNNAKIPPAUN WOODS



Life site number 2 in a conservation project to restore priority woodlands under the EU Habitats directive. Bunnakippaun woodland is on limestone pavement and part of the East Burren Complex (SAC). DRCD maintenance funds were used for resurfacing paths and to make safe a popular access point adjacent the Tubber GAA field and Kilkeedy community. This site is a wild retreat and outdoor classroom to the community on the importance of protecting rare habitats as well as an active lifestyle. The works were planned to further supplement funding sourced by the community and future offsite plans in the GAA field will provide additional parking for this busy little woodland.

PORTUMNA



A very popular destination for anyone in east Galway, seven days a week, with its beautiful stands of Scots pine and shoreline on Lough derg. The Castle of course is a great draw also and now DRCD maintenance funds have been used to great effect to provide those in wheelchairs more comfortable access to the marina area through the resurfacing of existing footpaths. Wheelo was an earlier initiative in Portumna to ensure orienteering was accessible to all and now with these recent works it is hoped more the adventuring will continue onto the water.



DERROURA/WESTERN WAY LACKAVREA



The Mountain bike trails centre in Derroura was a first of its kind and now over 15 years old it has just received some much-deserved TLC with the help of DRCD maintenance funding. An increased capacity carpark was built, and sections of MTB trail were improved with more modern building techniques.

The walking infrastructure in nearby Lackavrea had an upgrade to the existing boardwalk with 2km of new hard surface pathway through a recently clearfelled area and was rerouted safely back from the Folore River which is an important habitat for the dragon flies that proliferate this area during the warmer months.

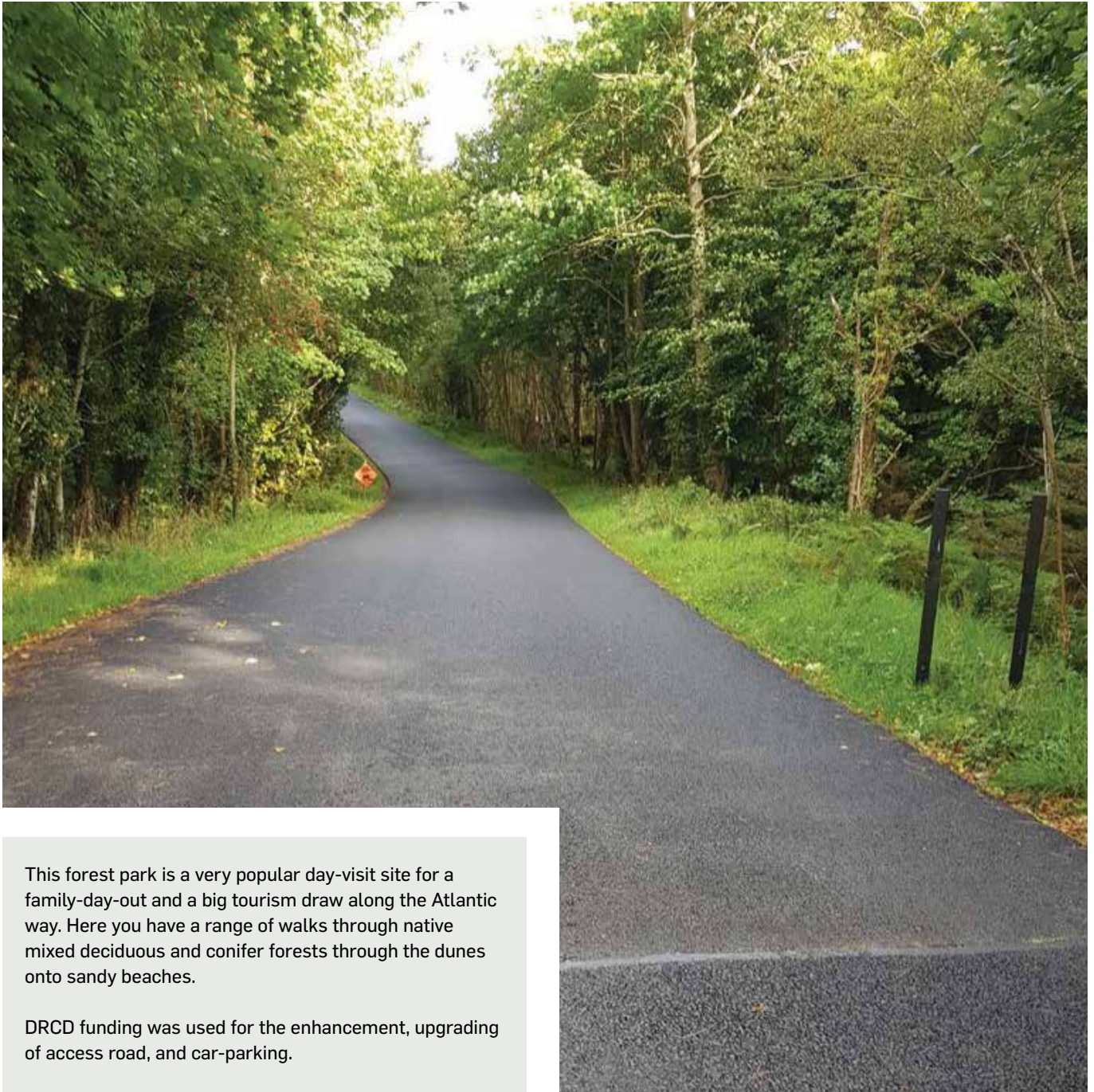
ROSSCAHILL WOODS



New looped pathways were built around the perimeter of this beautiful woodland, much of which is deciduous and really highlights the importance of getting out into nature through all seasons. The Autumn colours here make for a very popular walking and cycling destination just south of the village of Oughterard.

CAPITAL SPENDING:

ARDS FOREST PARK, CO. DONEGAL



This forest park is a very popular day-visit site for a family-day-out and a big tourism draw along the Atlantic way. Here you have a range of walks through native mixed deciduous and conifer forests through the dunes onto sandy beaches.

DRCD funding was used for the enhancement, upgrading of access road, and car-parking.

BALLYGAR



Installation of new footbridges and trail upgrades at Aghrane Forest, Ballygar, Co. Galway.

CONG – CLONBUR



Full upgrade of the trail which connects the villages of Cong in Mayo to Clonbur in Galway for safe, off-road walking and cycling.

COOLANEY



An example of compostable toilets being installed at many of Coillte's high-use recreation forests. This one is located at Coolaney Mountain Bike Trail Centre in Sligo.

DONADEA 1 AND 2



A full upgrade and expansion of car-parking at Coillte's highest-use Forest Park at Donadea in Kildare. Over 230,000 people visited Donadea in 2021 and new car-parking was needed to cater for our increased visitor numbers.

GLANTEENASSIG



A very popular forest recreation site overlooking Castlegregory in Kerry on the Dingle peninsula. A new surface was laid on the long entrance road to make the site more easily accessible.

KNOCKRANNY



New car-parking was developed to cater for many more visitors at this popular recreation forest near Westport in Mayo.

WESTERN WAY



Much improved surfaces on the Western Way in Galway gives hikers access into the Maumturk mountains beyond.



Appendix

Appendix 1 – Sites maintained with DRCD funding contribution in 2021

County	Site/trail Name	Nearest Town	Works Undertaken
All	Car-parking	Various	Upgrade works to many small/layby car-parking areas at various locations in response to significant increased demand for access to outdoor recreation sites.
All	Cycle trail design	Various	Design costs for family cycle trails at forest parks.
All	Play equipment	Various	3rd party certified assessments of playground equipment carried out. Ongoing monitoring and replacement of equipment parts as required in all playgrounds (x8).
All	Signage design	Various	Technical support for signage design.
All	Signage design and supply	Various	For replacement, additional and new signage requirements.
All	Trail design surveys	Various	Design and survey for new/upgraded trails.
All	Visitor counters	Various	Continue data collection using visitor counters at circa 40 sites.
All	Website/ Mapping	Various	Website upgrades and mapping surveys.
Cavan	Dun an Ri Forest Park	Kingscourt	General maintenance. Update of signage across the park. Upgrade of trails and river bank restoration. Toilet Block upgrade.
Cavan	Killykeen Forest Park	Cavan	General Maintenance, including grass cutting and hedge cutting. Creation of a link trail 40m from new trailhead to cycle trail to Killeshandra. Maintenance of trails, new signage.
Clare	Ballycuggaran	Killaloe	General maintenance work and tree surgery.
Clare	Cahermurphy	Cahermurphy	General and car park maintenance and tree surgery.
Clare	Cratloe	Limerick	Very popular site. General maintenance and tree surgery.
Cork	Ardarou	Glenville	General maintenance to trails and car park.
Cork	Ballard	Kilworth	General maintenance work and tree surgery.
Cork	Ballyannan	Midleton	General maintenance and forest loop upgrade.

Note: General maintenance refers to vegetation control, minor surface repairs, repairs to water control features and repairs to trail furniture.

Appendix 1 – Sites maintained with DRCD funding contribution in 2021

County	Site/trail Name	Nearest Town	Works Undertaken
Cork	Carrigfadda	Rosscarbery	General maintenance. Ongoing maintenance on the 'stepped' section.
Cork	Castleblagh	Ballyhooley	General maintenance.
Cork	Castlefreck	Rathbarry	General maintenance - hedge-cutting, litter, grass-cutting, etc. Road, riverbank and trail repair and upgrade following storm.
Cork	Castlemartyr	Castlemartyr	General maintenance.
Cork	Corrin	Fermoy	General ongoing maintenance. Vegetation growth can be vigorous here in open sections.
Cork	Curragh	Midleton	General maintenance of two parking areas. Ongoing monitoring of unsanctioned mountain biking.
Cork	Curraghbinny	Carrigaline	General maintenance and tree surgery.
Cork	Dunboy	Castletownbere	Signage installed and general maintenance.
Cork	Farran Forest Park	Coachford	Ongoing maintenance of the Park. Grass cutting, clearing of windblow, maintenance of orienteering course, walking trails, toilet block, picnic areas, deer enclosure and deer management ongoing.
Cork	Garrettstown/ Ballinspittle	Garrettstown	General maintenance.
Cork	Glansheskin	Kilworth	General maintenance.
Cork	Glenanair	Ardpatrick	General maintenance.
Cork	Glenbower	Killeagh	General maintenance, upgrade on trails post harvesting. Note: community group here.
Cork	Guagán Barra Forest Park	Ballingeary	General maintenance of a park that is in an exposed site in terms of the elements. Upper trails on the hills need annual repair of steps and water management and the lower trails require remedial work on occasion post flooding events. Toilet block, barrier and CCTV maintenance.

Note: General maintenance refers to vegetation control, minor surface repairs, repairs to water control features and repairs to trail furniture.

Appendix 1 – Sites maintained with DRCD funding contribution in 2021

County	Site/trail Name	Nearest Town	Works Undertaken
Cork	Island Wood	Newmarket	General maintenance, New signage and furniture by ORIS. Trails were opened up and cleaned as part of overall project.
Cork	Kilbrittain-Glanduff	Kilbrittain	General maintenance.
Cork	Marlogue	Cobh (Great Is)	General maintenance: Windblow removed and repairs carried out to trails, etc.
Cork	Mullinhassig Waterfall	Coachford	General maintenance and tree surgery.
Cork	Oldcourt	Rochestown	General maintenance.
Cork	Pooleen	Glengarriff	General maintenance.
Cork	Rineen	Leap	General maintenance and tree surgery.
Cork	Rostellan	Aghada	General maintenance. Upgrade of forest loop.
Cork	Warrenscourt	Macroom	General maintenance.
Donegal	Ards Forest Park	Dunfanaghy	General maintenance costs at busy forest park. Path repair, Bridge repair. New picnic benches, Repair of access road into carpark.
Donegal	Ballykeeran	Kilmacrennan	General maintenance. Drainage and path repair.
Donegal	Bluestack Way (Bord na Móna)	Donegal	General maintenance, strimming and repair to muddy sections.
Donegal	Bonny Glen (Derryhirk)	Inver	General maintenance. Resurfacing of path along Lough Namanlagh (adjacent to Clooney Wood which is a large Neighbourwood Scheme).
Donegal	Carrickbressil	Millford	General maintenance. Drainage and cut back vegetation carried out.
Donegal	Corravaddy	Letterkenny	General maintenance. Extend carpark and path repairs.
Donegal	Drumboe	Stranorlar	Ongoing maintenance. Drainage and cut back.

Note: General maintenance refers to vegetation control, minor surface repairs, repairs to water control features and repairs to trail furniture.

Appendix 1 – Sites maintained with DRCD funding contribution in 2021

County	Site/trail Name	Nearest Town	Works Undertaken
Donegal	Drumharriff	Pettigo	General maintenance. Resurface sections of the remaining sections of paths. Some drainage works and erect timber railings at car park side.
Donegal	Drumonaghan (Ballyair)	Ramelton	General path maintenance.
Donegal	Lough Eske	Donegal	General maintenance. Cut back growth, clean verges and some re-surfacing carried out.
Donegal	Mullaghagarry	Ballybofey	General maintenance. Path and verges maintenance.
Donegal	Murvagh	Donegal	General maintenance.
Donegal	Pilgrim path (Lough Derg)	Pettigo	Drainage, pot holes and verges.
Donegal	Woodquarter	Milford	General maintenance. Section of path to be resurfaced. Some drainage works.
Galway	Aghrane	Ballygar	General maintenance, path repair and upgrade.
Galway	Ardnageeha	Cong	General maintenance, path repair upgrade and wind blown tree removal.
Galway	Cong	Cong	General maintenance.
Galway	Derroura	Maam Cross	Continuing trail repairs and general maintenance.
Galway	Derryclare	Lough Inagh	General maintenance.
Galway	Lackavrea	Maam Cross	General maintenance. Ongoing replacement of timber decking on Western Way long distance walking trail and removal of windblown trees.
Galway	Mountbellew	Mountbellew	Signage, cut back vegetation, repair paths and tree surgery.
Galway	Portumna Forest Park	Portumna	General maintenance, path repair, windblown trees, car park repair and wall repair.
Galway	Roscahill	Moycullen	General maintenance and trail upgrade.
Galway	Sonnock/ Gortnamannagh	Kilchreest	General maintenance.

Note: General maintenance refers to vegetation control, minor surface repairs, repairs to water control features and repairs to trail furniture.

Appendix 1 – Sites maintained with DRCD funding contribution in 2021

County	Site/trail Name	Nearest Town	Works Undertaken
Galway	Western Way Galway	Various	General maintenance.
Kerry	Caragh Lake	Killorglin	Tree surgery, signage and general maintenance.
Kerry	Glannageenty	Castleisland	General maintenance of site and car park.
Kerry	Glanteenassig	Castlegregory	Ongoing repairs to the boardwalk and general maintenance.
Kerry	Killaclohane	Milltown	General maintenance and hedge cutting.
Kerry	Kimego	Caherciveen	General maintenance and upgrade work old peat works tower.
Kerry	Lyracrompane	Listowel	General maintenance and trail repair.
Kerry	Pike Wood	Killarney	General maintenance.
Kerry	Rossacroo	Kilgarvan	General maintenance and bridge maintenance.
Kildare	Donadea Forest Park	Prosperous	Ongoing maintenance and management. Continued works to mitigate access issues. New barrier system installation.
Kildare	Killinthomas	Rathangan	General site maintenance.
Kildare	Mullaghreelan	Castledermot	General Maintenance. Finish off to major works conducted in 2020. Trail tidy and fencing off of the car new park.
Kilkenny	Castlemorris	Ballyhale	General maintenance.
Kilkenny	Jeninstown	Kilkenny	General park upgrade, resurface carpark and new benches.
Kilkenny	South Leinster Way	Various	Upgrade and maintain NWW.
Laois	Dunmore	Durrow	General maintenance. Forest road resurfacing. Trail upgrade. Tree surgery.
Laois	Garryhinch	Portarlinton	General maintenance.
Laois	Slieve Bloom Way (New bog bridge)	Rosenallis	General maintenance along the full route.

Note: General maintenance refers to vegetation control, minor surface repairs, repairs to water control features and repairs to trail furniture.

Appendix 1 – Sites maintained with DRCD funding contribution in 2021

County	Site/trail Name	Nearest Town	Works Undertaken
Laois	The Cut	Clonaslee	General maintenance. Trail repair and upgrade.
Laois	The Derries (Rathadaire Lake walk)	Ballybrittas	General maintenance.
Leitrim	Derrycarne	Castlebaldwin	Repair the barrier at the entrance and general maintenance.
Leitrim	Derrynahimmirk	Kiltyclogher	General maintenance.
Leitrim	Glencar Waterfall	Glencar	Tree surgery and maintenance.
Leitrim	Glenfarne	Manorhamilton	General maintenance. Collaborating with Leitrim County Council to develop this site.
Limerick	Ballyhoura MTB	Ardpatrick	General maintenance. Remedial work on the Trim Trail, and remedial works post harvesting. Significant upgrade work carried out on the Brown Trail.
Limerick	Curragh Chase Forest Park	Kildimo	General maintenance and upkeep of park, trails, toilet block and car park.
Limerick	Foynes	Foynes	General maintenance, furniture upgrade and trail repair.
Limerick	Galty Castle	Kilbehenny	General maintenance.
Limerick	Mountain Meitheal	Galtees	Ongoing support and materials provided to Mountain Meitheal who carried out manual works on access points around the Galtys.
Longford	Derrycassan	Granard	General maintenance. Windblown trees and trail repair.
Longford	Gowna	Gowna	General maintenance.
Longford	Newcastle	Ballymahon	General maintenance. Windblown trees and post storm clean up.
Longford	Rathcline	Lanesboro	General maintenance. Windblow and storm tidy up.

Note: General maintenance refers to vegetation control, minor surface repairs, repairs to water control features and repairs to trail furniture.

Appendix 1 – Sites maintained with DRCD funding contribution in 2021

County	Site/trail Name	Nearest Town	Works Undertaken
Louth	Ravensdale	Ravensdale	General maintenance. Trail upgrade and repairs.
Louth	Sliabh Foye/Carlingford	Carlingford	General maintenance. Entrance road ongoing repairs to car-park. Upgrade signage and furniture.
Louth	Townley Hall	Tullyallen	General Maintenance. Threshold Signs and get waymarkers installed on the paths. Tree surgery along the Glens section.
Mayo	Belleek wood	Ballina	General maintenance, trail repairs and tree surgery.
Mayo	Brackloon wood	Westport	General maintenance. Rhododendron ongoing treatment and removal to open up paths. Path repairs when needed.
Mayo	Castlemagarrett	Claremorris	General Maintenance. Furniture upgrade and Rhododendron control.
Mayo	Drummin	Foxford	Seats repaired and general maintenance
Mayo	Knockranny	Westport	General maintenance. Trail upgrading and repairs. Support to Neighbourwood scheme.
Mayo	Moorehall	Ballintubber	General maintenance. Support to Masterplan.
Mayo	Raheens	Castlebar	General maintenance.
Mayo	Tawnyard	Drummin	General maintenance.
Mayo	Tourmakeady	Tourmakeady	General maintenance, upgrade post and rail, furniture and rhododendron control.
Mayo	Western way	Various	General maintenance and boardwalk repair.
Meath	Summerhill	Summerhill	General trail maintenance. Signage replaced and upgrade car park railings.
Monaghan	Black Island	Castleblaney	Maintenance work to all trails
Monaghan	Rossmore Forest Park	Monaghan	General maintenance works and tree surgery.

Note: General maintenance refers to vegetation control, minor surface repairs, repairs to water control features and repairs to trail furniture.

Appendix 1 – Sites maintained with DRCD funding contribution in 2021

County	Site/trail Name	Nearest Town	Works Undertaken
Offaly	Castletown (Kinnitty)	Kinnitty	General maintenance. Ongoing invasive species control and repairs to river paths.
Roscommon	Correen	Ballinasloe	Small site and general maintenance.
Roscommon	Derryvunny	Carrigeenroe	Small recreation site on north side of Lough Key. General maintenance. Trail extension from boardwalk to lake.
Roscommon	Knockranny	Drumshanbo	General maintenance.
Roscommon	Lough Key Forest Park	Boyle	General maintenance to Coillte sections.
Sligo	Carns	Sligo	General maintenance.
Sligo	Carrownaskeagh	Coolaney	General maintenance.
Sligo	Deerpark	Sligo	General maintenance.
Sligo	Dooney	Sligo	General maintenance.
Sligo	Gleniff	Drumcliff	General maintenance.
Sligo	Hazelwood	Sligo	General maintenance, trail repairs and tree surgery.
Sligo	Lissadell	Sligo	General maintenance and road repair.
Sligo	Rathcarrick	Collooney	General maintenance. Path and step repair and windblow.
Sligo	Rathscanlon	Tubbercurry	General maintenance and fencing installed.
Sligo	Sligo Way	Various	Work ongoing to upgrade trails.
Sligo	Sliswood	Sligo	Trail maintenance, grass cutting and tree surgery.
Sligo	Union wood	Collooney	General maintenance.
Tipperary	Bansha Woods	Bansha	General maintenance.
Tipperary	Bishops Wood	Dundrum	General maintenance.

Note: General maintenance refers to vegetation control, minor surface repairs, repairs to water control features and repairs to trail furniture.

Appendix 1 – Sites maintained with DRCD funding contribution in 2021

County	Site/trail Name	Nearest Town	Works Undertaken
Tipperary	Devils Bit trail	Templemore/ Monegall	Install signage and upgrade waymarking.
Tipperary	Glengarra	Cahir/Mitchelstown	General maintenance.
Tipperary	Gortavoher	Tipperary town	Ongoing repairs to Ardlooman car park.
Tipperary	Greenfield	Cappawhite	General maintenance. Invasive species control. Trail maintenance.
Tipperary	Killballyboy	Ballyporeen	General maintenance and trail upgrade.
Tipperary	Knockanroe/Step	Silvermines	General maintenance.
Tipperary	Marl Bog	Dundrum	General maintenance and trail repairs
Waterford	Carey's Castle	Clonmel	General maintenance and managing anti-social behaviour.
Waterford	Colligan	Dungarvan	Ongoing maintenance, hedge cutting and tree surgery.
Waterford	Dromana	Villierstown	General maintenance.
Waterford	Faithlegg	Waterford	General maintenance and managing anti-social.
Waterford	Glenshelane	Cappoquin	General maintenance, hedge cutting and tree surgery.
Waterford	Kilclooney	Rathcormack	Ongoing maintenance.
Westmeath	Ballinafid (Kilpatrick)	Mullingar	General maintenance.
Westmeath	Moydrum	Athlone	General maintenance.
Westmeath	Mullaghmeen	Oldcastle	General maintenance. Trail upgrade and carpark maintenance. Upgrade of arboretum.
Wexford	Carrickbyrne	New Ross	General maintenance and path maintenance.
Wexford	Forth Mtn	Wexford	General maintenance, signage and security.
Wexford	Oaklands	New Ross	General maintenance and trail upgrades.

Note: General maintenance refers to vegetation control, minor surface repairs, repairs to water control features and repairs to trail furniture.

Appendix 1 – Sites maintained with DRCD funding contribution in 2021

County	Site/trail Name	Nearest Town	Works Undertaken
Wexford	Tara Hill	Gorey	General maintenance.
Wexford	Tintern	New Ross	Resurfaced walkways and upgraded walk in the Deal Park enclosure. New car-parking area and new footbridge.
Wicklow	Aughrim (Sean Lenihan Walk)	Aughrim	General maintenance, upgrade to boardwalk and trail maintenance.
Wicklow	Avondale Forest Park	Rathdrum	Ongoing works to site. General maintenance and grass-cutting.
Wicklow	Baravore	Glenmalure	General maintenance.
Wicklow	Devils Glen	Ashford	General maintenance. Trail, furniture and signage upgrade. Car park upgrade and invasive species control.
Wicklow	Djouce (Deerpark)	Roundwood	Signage upgrade path from car park.
Wicklow	Mount Kennedy	Newtown	General maintenance.
Wicklow	St Kevin's Way	Various	General maintenance.
Wicklow	Wicklow Way	Various	General maintenance and continuous improvements.

Note: General maintenance refers to vegetation control, minor surface repairs, repairs to water control features and repairs to trail furniture.



We look forward to 2022 as a year during which Coillte will continue to make a positive contribution to all by delivering the multiple benefits of forestry, recognising that the easing of Covid-19 restrictions will allow our organisation and key stakeholders to reconnect in a meaningful way.

For more information about Coillte,
please contact us at:

Coillte,
Dublin Road,
Newtownmountkennedy,
Co. Wicklow,
A63 DN25.

Tel: 1890 367 378
Email: info@coillte.ie
www.coillte.ie



An Roinn Forbartha
Tuaithe agus Pobail
Department of Rural and
Community Development

