



Marine Notice No. 40 of 2023

Notice to all Shipowners, Fishing Vessel Owners, Agents, Shipmasters, Skippers, Fishers, Yachtsmen and Seafarers

McMahon Design & Management (MDM) Assessment Survey in the Irish Sea

Amended 22/06/2023

1. Notice of Activity

The Department of Transport has been advised that a geophysical and geotechnical surveys will be undertaken by **Green Rebel** in the Irish Sea to assess cable burial on behalf of MDM. The survey work is anticipated to start on **19 June** and be completed by the end of **September 2023**, subject to weather and operational constraints. The campaign will involve the deployment of towed equipment from survey vessels within the bounds of the area detailed below.

2. Location of Activity

The locations of the surveys are available in the map in Appendix 1 at the end of this Notice and from the coordinates in Table 1 below. The survey will commence with the green **Survey Block 1** sections of the routes inside the Irish EEZ (at Starting Location – 53° 32.3256'N, 5°40.1140'W) before moving into the blue **Survey Block 2**, then the orange **Survey Block 3** sections in UK waters.

Table 1: Start and end points for the survey corridor routes.

Cable Route	Starting Point		Ending Point	
	Latitude	Longitude	Latitude	Longitude
Route 1	53° 32.3256'N	5°40.1140'W	53° 16.7252'N	4° 37.2171'W
Route 2	53° 24.2778'N	5°41.2283'W	53° 18.0872'N	3° 34.8154'W
Route 3	51° 57.2373'N	6°21.0961'W	51° 51.1705'N	5° 7.6751'W

3. Details of the Survey Vessels

The survey will be conducted by the following survey vessels:

- **Roman Rebel** (call sign **2ICA5**)
- **Lady Kathleen** (call sign **EIXT2**)

As the survey vessels will be restricted in their ability to manoeuvre when surveying, due to the deployment of the towed survey equipment from the vessel for the duration of the survey activities, other vessels are kindly requested to **keep a wide berth**. The vessels will display appropriate lights and signals and the work will be conducted during **24 hr operations** on board the **Roman Rebel** and **12 hr operations** on board the **Lady Kathleen**. Mariners are advised to keep continuous watch on **VHF radio channel 16** when navigating the area.

4. Contact Details

Enquiries regarding the contents of this Marine Notice, or any other relevant matters, should be directed to **Seagard Limited who are providing their Fisheries Liaison Services for the project:**

- **Name: Aaron Mair**
Email: aaron@seagard.org
Telephone: +44 (0) 7468 457 030

All mariners are reminded of their responsibilities under the International Collision Regulations and of [Marine Notice No. 17 of 2007](#), which gives general advice in relation to the activities of vessels engaged in survey work for hydrographic, seismic, fishing research and underwater operations.

The International Regulations for Prevention of Collisions at Sea (COLREGS) are implemented in Irish law by the *Merchant Shipping (Collision Regulations) (Ships and Water Craft on the Water) Order 2012* [S.I. No. 507 of 2012] and the *Signals of Distress (Ships) Rules 2012* [S.I. No.170 of 2012]. [See Marine Notice No. 06 of 2013](#). These Statutory Instruments may be purchased by mail order from Government Publications, Office of Public Works, Mountshannon Road, Dublin, D08 XA06 Tel: (046) 9423100. They are also available online at: www.irishstatutebook.ie.

Note: Marine Notices are issued purely for maritime safety and navigation reasons and should not be construed as conferring rights or granting permissions.

Irish Maritime Administration,
Department of Transport,
Leeson Lane, Dublin 2, D02 TR60, Ireland.

20/06/2023

Amended 22/06/2023

Encl: Appendix 1: Map of survey locations

For any technical assistance in relation to this Marine Notice, please contact:

The Marine Survey Office, email: MSO@transport.gov.ie.

For general enquiries, please contact the Maritime Safety Policy Division, email:

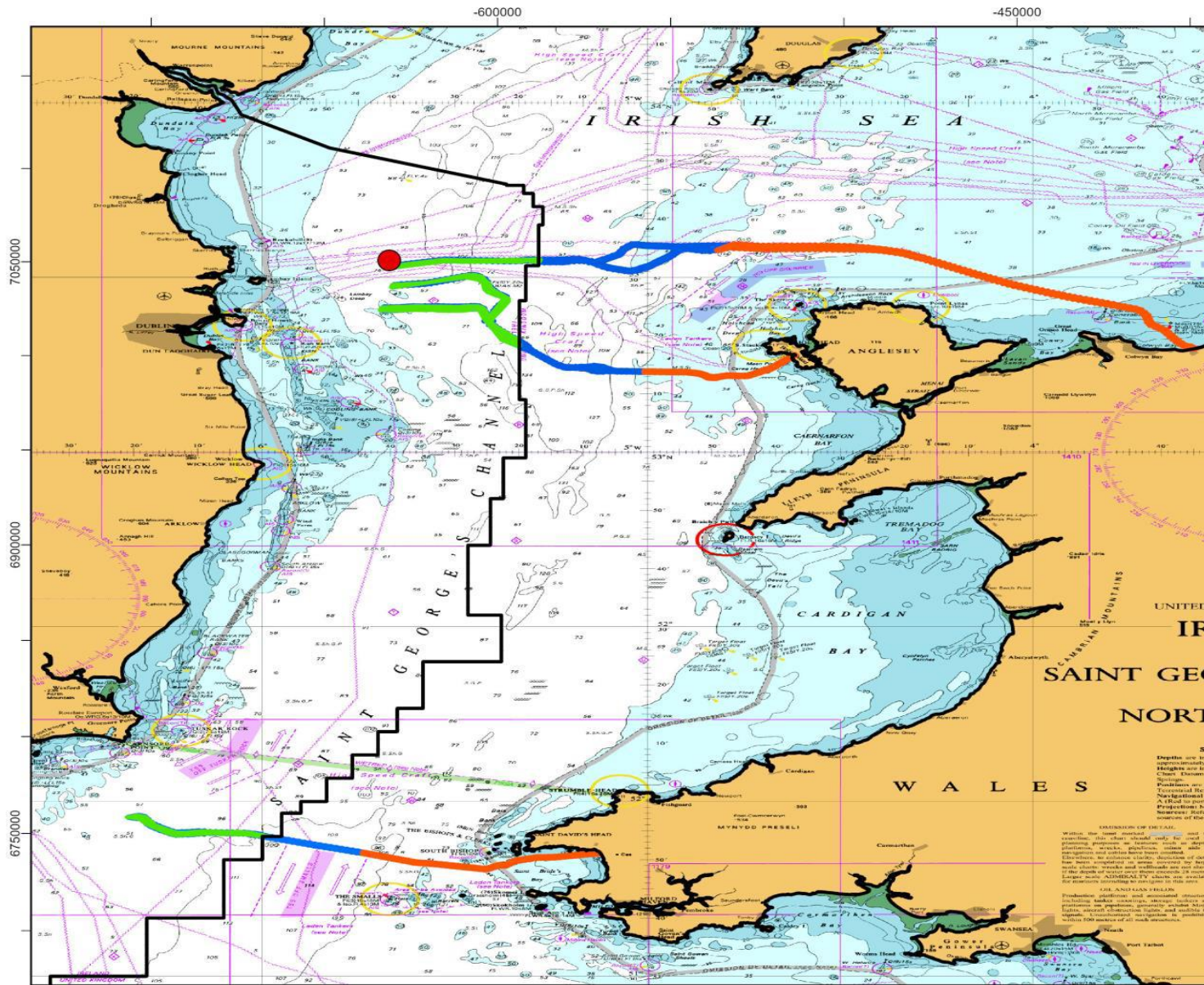
MaritimeSafetyPolicyDivision@transport.gov.ie.

Written enquiries concerning Marine Notices should be addressed to:

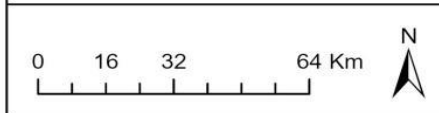
Dept. of Transport, Maritime Safety Policy Division, Leeson Lane, Dublin 2, D02 TR60, Ireland.

email: MarineNotices@transport.gov.ie or visit us at: www.gov.ie/transport.

Appendix 1: Map of survey locations.



- Legend**
- Starting location
 - Survey Block-1
 - Survey Block-2
 - Survey Block-3
 - EEZ Boundary



Notice to Mariners

<p>Spatial Reference Name: GCS WGS 1984 GCS: GCS WGS 1984 Datum: WGS 1984 Map Units: Degree</p>	<p>Esri UK, Esri, Garmin, FAO, NOAA, USGS, Esri, CGIAR, USGS, Esri UK, Esri, HERE, Garmin, FAO, NOAA, USGS, Esri, USGS</p>
--	--

