



Marine Notice No. 51 of 2023

Notice to all Shipowners, Fishing Vessel Owners, Agents, Shipmasters, Skippers, Fishers,
Yachtsmen and Seafarers

Port of Waterford Construction of Sustainable Transport Bridge

1. Notice of Activity

The Department of Transport has been advised by The Port of Waterford that the construction of a sustainable transport bridge will take place between the North and the South Quays from **24 July 2023 until 31 December 2024**, subject to weather and operational constraints.

2. Location of Activity

The co-ordinates in the chart below, and the map attached at Appendix A to this notice, indicate the area of operation and where the bridge piers (vertical supports) will be established. All vessels approaching the area of operations should communicate with the barges on **VHF Channel 06** and proceed with caution, giving them a wide berth where possible. The channel will remain navigable between Pier C and Pier D. Temporary navigation lights will be established as per below. The existing red lights on the east and west ends of the clock tower pontoon will be replaced by yellow lights.

Position	Pier B	Pier C	Pier D	Pier E	Clock Tower Pontoon - West	Clock Tower Pontoon - East
Latitude WGS84	52°15.84'N	52°15.82'N	52°15.79'N	52°15.77'N	52°15.79'N	52°15.74'N
Longitude WGS84	007°06.62'W	007°06.64'W	007°06.56'W	007°06.67'W	007°06.75'W	007°06.55'W
Character	Yellow (Fl.5s)	Green (Fl.3s)	Red (Fl.3s)	Yellow (Fl.5s)	Yellow (Fl.5s)	Yellow (Fl.5s)

3. Details of Survey Vessels

Three barges will be in operation during the works: the “**Skerchi**”, the “**ACN5**” and the “**Ardon**”. The Barge Masters will maintain a continuous VHF watch on Channel 06 & 16. A safety boat will be always in attendance with the barges during construction works. At various times during construction, the “**Skerchi**” will be anchored in the locations shown in Appendices B.1 and B.2 below. The position of each anchor will be indicated by an unlit yellow buoy. The barges will exhibit a sign “Warning – Marine Works – KEEP AWAY”.

4. Contact Details

Enquiries regarding the contents of this Marine Notice, or any relevant matters, should be directed to

- Des Gilsenan (Liaison Officer)
wcpip@bam.com
Ph: 051 364077
- Brian Enright (Barge Master)
benright@bam.com
Mob: 087 9448031

A Fisheries Liaison Officer will be available to discuss operations in advance and throughout the duration of the survey campaign.

All mariners are reminded of their responsibilities under the International Collision Regulations and of [Marine Notice No. 17 of 2007](#), which gives general advice in relation to the activities of vessels engaged in survey work for hydrographic, seismic, fishing research and underwater operations.

The International Regulations for Prevention of Collisions at Sea (COLREGS) are implemented in Irish law by the *Merchant Shipping (Collision Regulations) (Ships and Water Craft on the Water) Order 2012* [S.I. No. 507 of 2012] and the *Signals of Distress (Ships) Rules 2012* [S.I. No.170 of 2012]. [See Marine Notice No. 06 of 2013](#). These Statutory Instruments may be purchased by mail order from Government Publications, Office of Public Works, Mountshannon Road, Dublin, D08 XA06; Tel: (046) 9423100. They are also available online at: www.irishstatutebook.ie.

Note: Marine Notices are issued purely for maritime safety and navigation reasons and should not be construed as conferring rights or granting permissions.

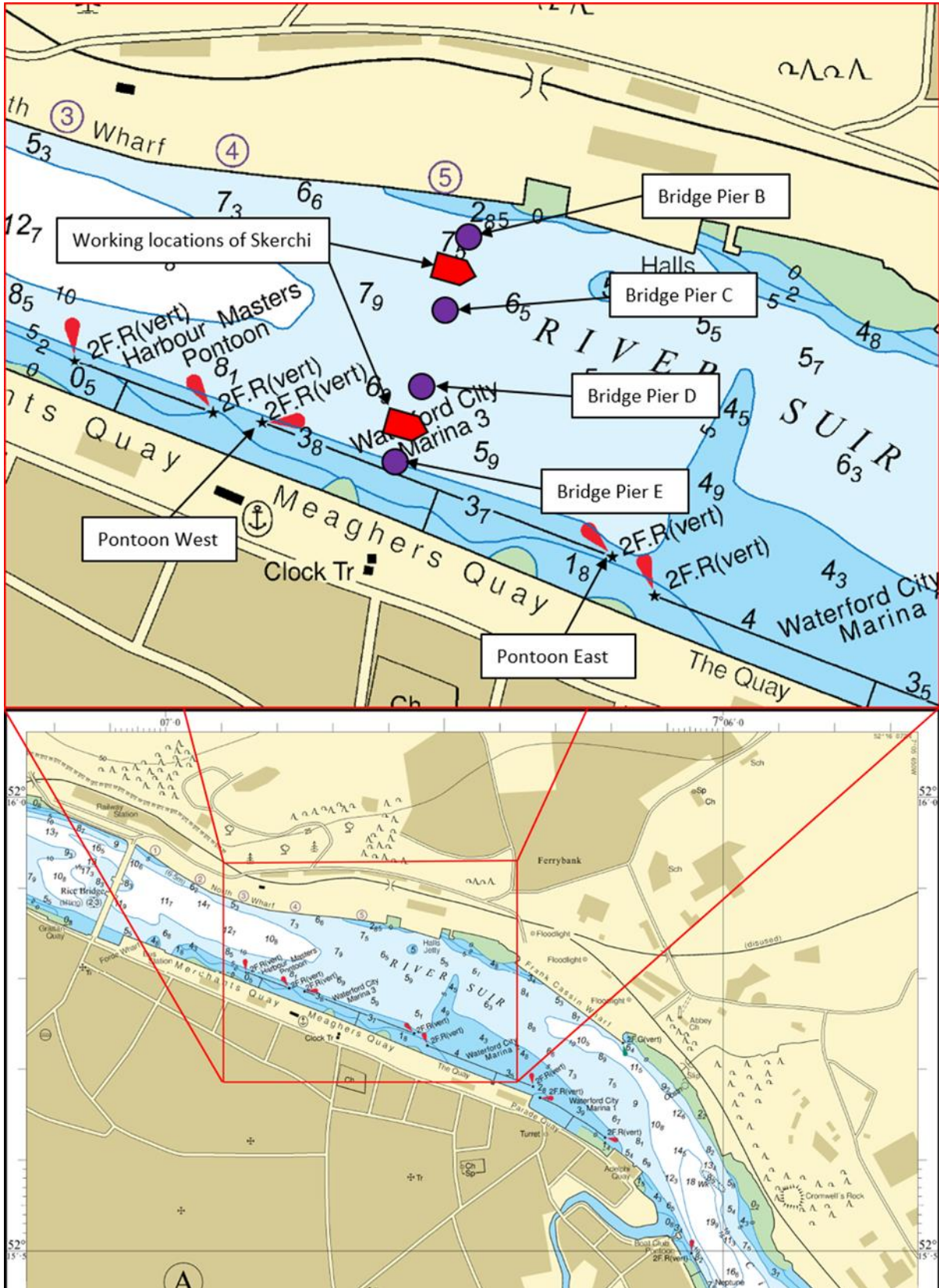
Irish Maritime Administration,
Department of Transport,
Leeson Lane, Dublin 2, D02 TR60, Ireland.

24/07/2023

Encl: Appendix A – Area of Operation
Appendix B.1 – Anchor locations of Skerchi
Appendix B.2 – Subsequent location of Skerchi

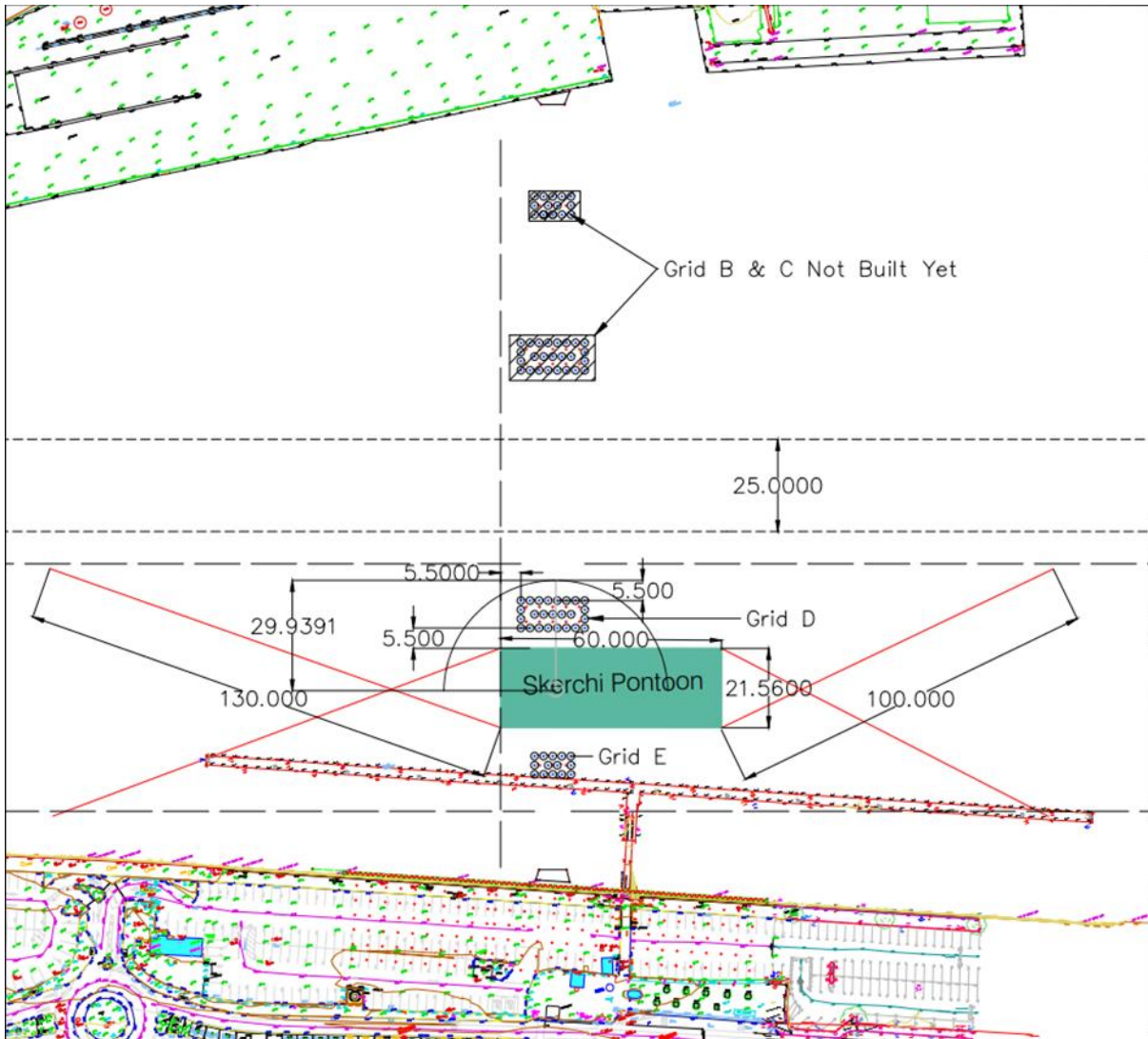
For any technical assistance in relation to this Marine Notice, please contact:
The Marine Survey Office, email: MSO@transport.gov.ie.
For general enquiries, please contact the Maritime Safety Policy Division, email:
MaritimeSafetyPolicyDivision@transport.gov.ie.
Written enquiries concerning Marine Notices should be addressed to:
Dept. of Transport, Maritime Safety Policy Division, Leeson Lane, Dublin 2, D02 TR60, Ireland.
email: MarineNotices@transport.gov.ie or visit us at: www.gov.ie/transport.

Appendix A – Area of Operation



Appendix B – Anchor locations of Skerchi

B.1 – Initial location of Skerchi



B.2 – Subsequent location of Skerchi

