



An Roinn Coimirce Sóisialaí  
Department of Social Protection

# Quarterly Statistical Report

**Quarter 2 2023**

Published  
Enquiries

27-07-2023  
[statsunit@welfare.ie](mailto:statsunit@welfare.ie)





## Background

The quarterly statistical report provides summary information on Income and Expenditure as well as total recipients of the main schemes administered by the Department of Social Protection.

The quarters referenced in this report cover the following periods

|           | Period                      |
|-----------|-----------------------------|
| Quarter 1 | January 1st - March 31st    |
| Quarter 2 | April 1st - June 30th       |
| Quarter 3 | July 1st - September 30th   |
| Quarter 4 | October 1st - December 31st |

These statistics may be subject to revision and should be considered as provisional.

### Classifications

The schemes in the report are grouped into programmes according to the social need they address. The programmes and their associated main schemes are set out in the table below.

| Programme                     | Schemes  |   |
|-------------------------------|--|---|
| Pensions                      | State Pension Contributory<br>Widow(er)'s Contributory Pension   | State Pension Non-Contributory  |
| Working Age Income Supports   | Jobseeker's Benefit<br>Jobseeker's Benefit for the Self employed<br>Maternity Benefit<br>Paternity Benefit<br>Parent's Benefit | Jobseeker's Allowance<br>One Parent Family Payment<br>Widow(er)'s Non-Contributory Pension<br>Pandemic Unemployment Payment |
| Illness Disability and Caring | Carer's Benefit<br>Invalidity Pension<br>Illness Benefit   | Carer's Allowance<br>Disability Allowance   |
| Children                      | Child Benefit<br>Working Family Payment  | Back to Work Family Dividend  |

## Table of Contents

|   |    |
|---|----|
| Background.....                           | 2  |
| Overall Expenditure.....                  | 3  |
| Programme Expenditure.....                | 4  |
| Pensions ..                               | 5  |
| Working Age Income Supports.....          | 6  |
| Illness, Disability, and Caring.....      | 7  |
| Children and Supplementary Payments ..... | 8  |
| Addition Needs Payment (ANP) .....        | 9  |
| Notes.....                                | 16 |

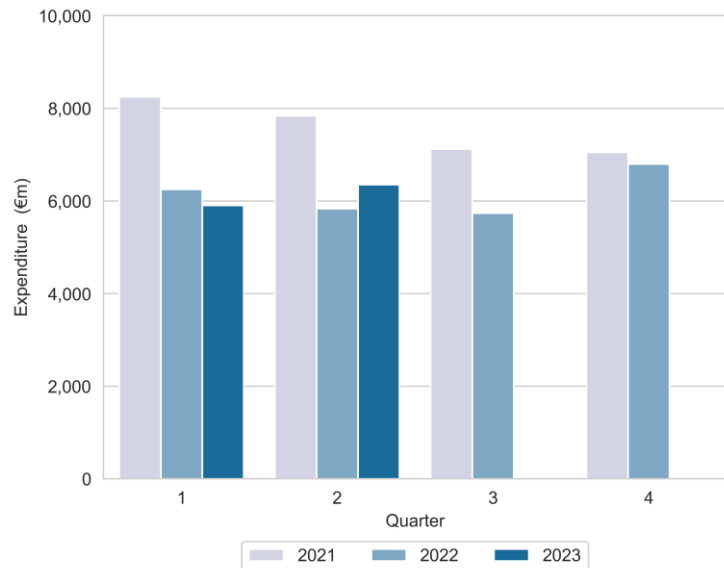
### Other Statistics issued by the Department of Social Protection

The Department also produces additional statistical reports which can be viewed at [www.gov.ie/dsp/statistics](http://www.gov.ie/dsp/statistics)



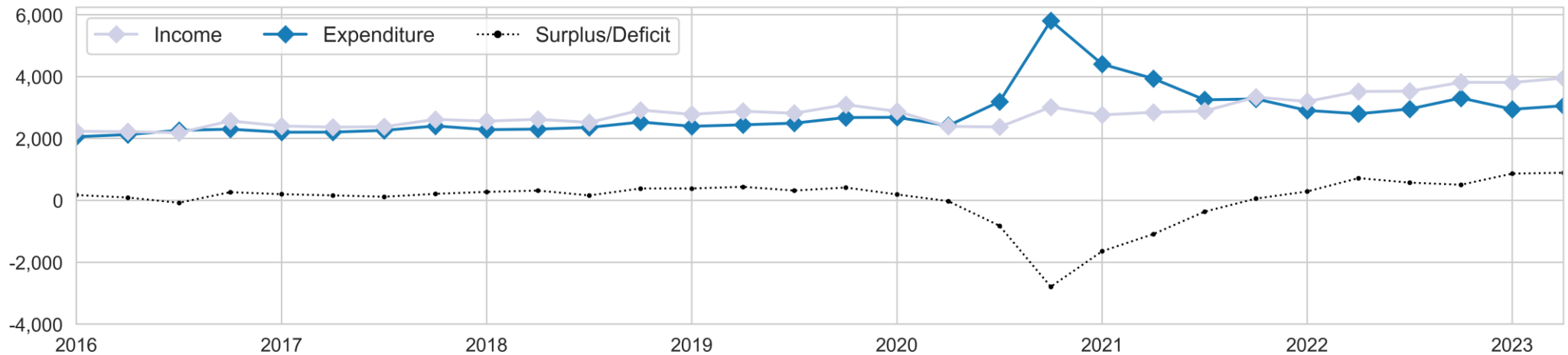
## Overall Expenditure

Figure 1: Expenditure (€m) by quarter



- The overall expenditure of the Department of Social Protection, to end of second Quarter of 2023, was €12.3 billion. This was €176 million, or 1%, more than the same period in 2022.
- Expenditure on Social Assistance schemes between April and June 2023, was an estimated €3.3 billion, an increase of 9% or €262 million compared to the same period in 2022.
- Expenditure on schemes financed from Social Insurance in the second Quarter of 2023 was an estimated €3.1 billion, an increase of €259 million or 9% compared to the same period in 2022.
- In the first six months of 2023, the Social Insurance Fund recorded a surplus to the tune of €1.8 billion.

Figure 2: Quarterly Social Insurance Fund Income and Expenditure (€m)

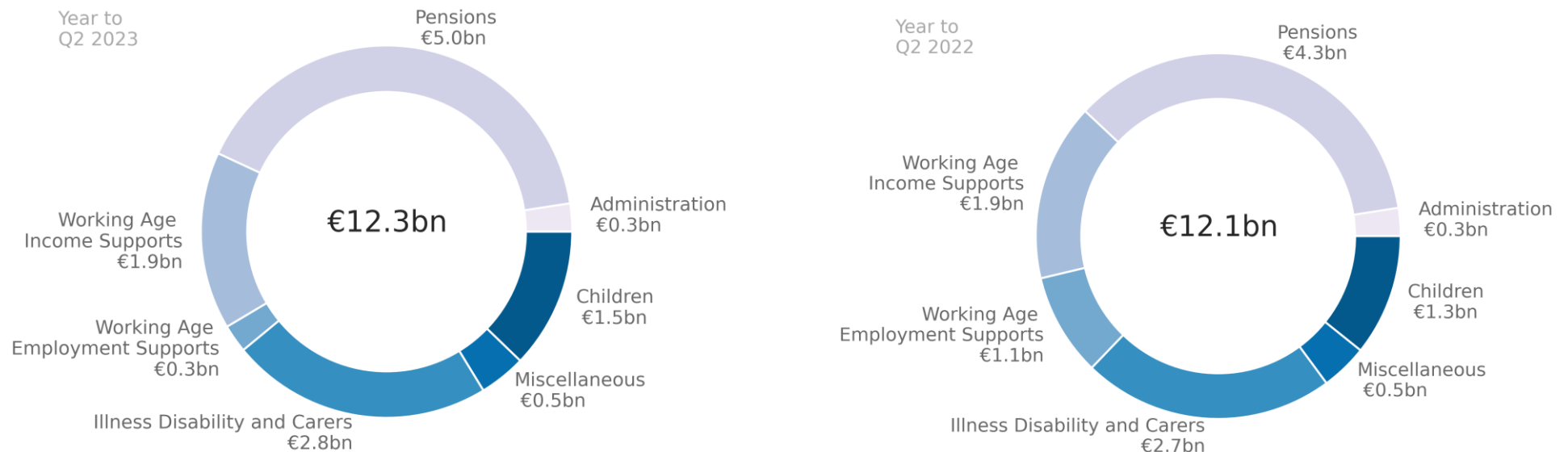




## Programme Expenditure

- Expenditure on Working Age Income Support payments in Q2 2023 was €958 million, an increase of €78 million (9%) compared to the same period in 2022.
- Spending on Working Age Employment Support schemes was recorded at €156 million in the second Quarter of 2023, a year-on-year decrease of €150 million or 49% when compared with the second Quarter of 2022.
- Child related payments amounted to €789 million in the second quarter 2023, resulting in a rise of 26% or €162 million from the same period in 2022.
- Pension payments in the period April to June 2023 of €2.6 billion show an increase of 15%, or €339 million, from the same period last year.
- Between April and June 2023, expenditure on Illness, Disability and Carers stood at €1.6 billion. This is an increase of increased by 10%, or €138 million, from the same period in 2022.
- Expenditure on Supplementary & Miscellaneous services stood at €148 million in Q2 2023. This is a decrease of 2%, or €3 million, compared with the second Quarter of 2022.

Figure 3: Expenditure to date by Social Protection Programme (€): This period and same period last year





## Pensions

- Some 726,118 people received payments across the main Pension schemes in Quarter 2 2023, a year-on-year increase of 3% (23,834) compared to Quarter 2 2022.
- The main increase in pension related payments occurred for the State Pension Contributory (SPC) scheme, which recorded a 4% year-on-year growth in recipients, from 479,717 to 498,681.
- Across the schemes the average weekly payment was €306 for SPC, €286 for SPNC, and €317 for WCP.
- 59% of people on the SPC were male, while females accounted for 60% of SPNC recipients and 84% of WCP recipients.

Figure 4: Pension recipients by year and by scheme

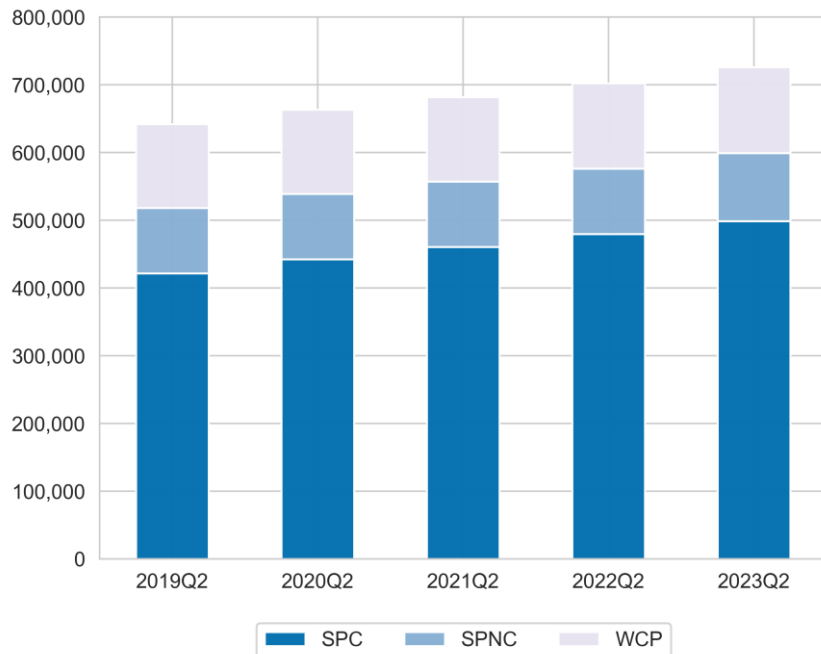
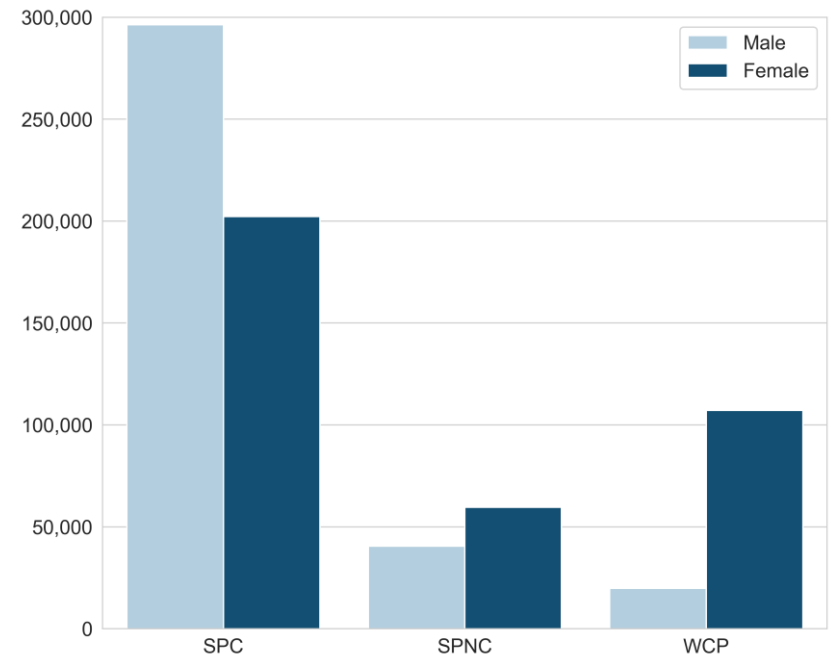


Figure 5: Pension recipients this quarter by sex and by scheme





## Working Age Income Supports

- A total of 173,002 people received Jobseeker’s Allowance in the last Quarter. This is an increase of over 6,193, or 4%, compared to Q2 2022.
- The total number of people in receipt of Jobseeker’s Benefit across Quarter 2 2023 was 64,821, a decrease from 65,871 in the first Quarter of 2023. This is the third successive Quarter with a decrease in Jobseeker’s Benefit recipients.
- Jobseeker’s Benefit (Self-Employed) recipients stood at 1,085 in the Quarter, a decrease of 18%, when compared with the same period in 2022. However, there was a decrease of 13% from Quarter 1 2023.
- There were 27,785 recipients of Maternity Benefit and 6,486 recipients of Paternity Benefit in the quarter. 23,955 people received payments from the Parent’s Benefit scheme, an increase of 16% on the previous quarter, and up by 26% compared to Q2 2022.

Figure 6: Jobseeker and Pandemic Unemployment Payment recipients

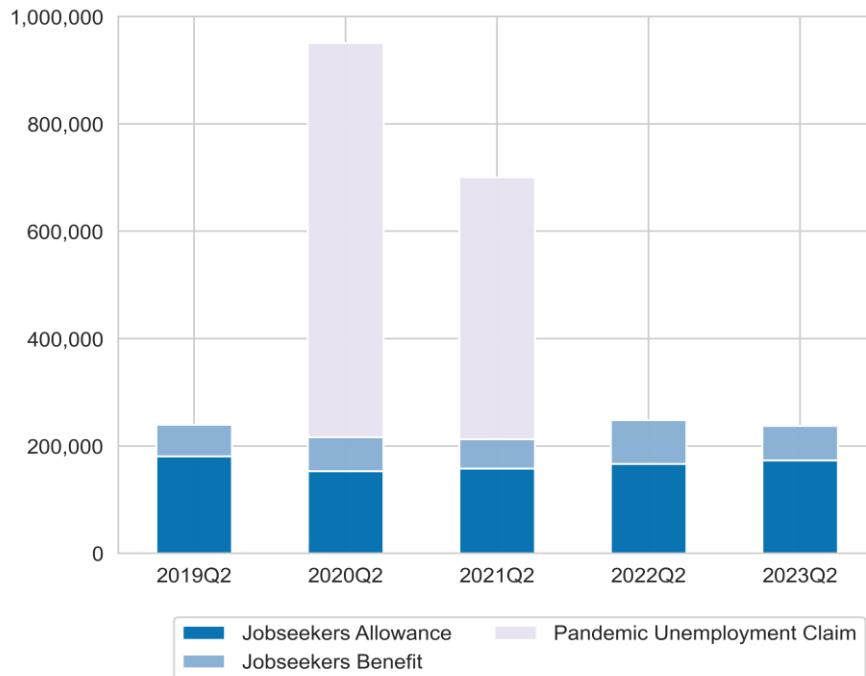
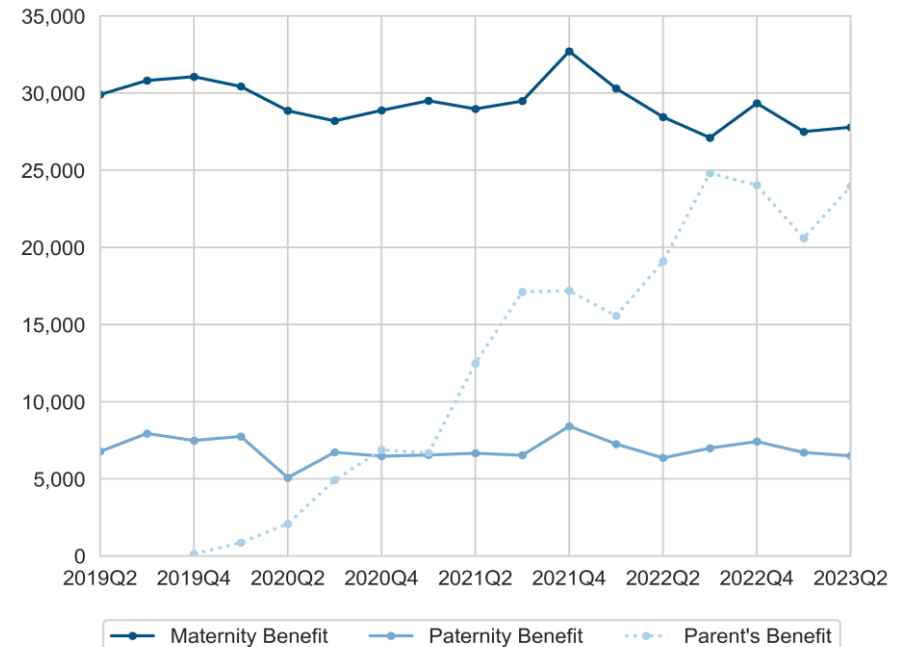


Figure 7: Maternity, Paternity, and Parent’s Benefit recipients

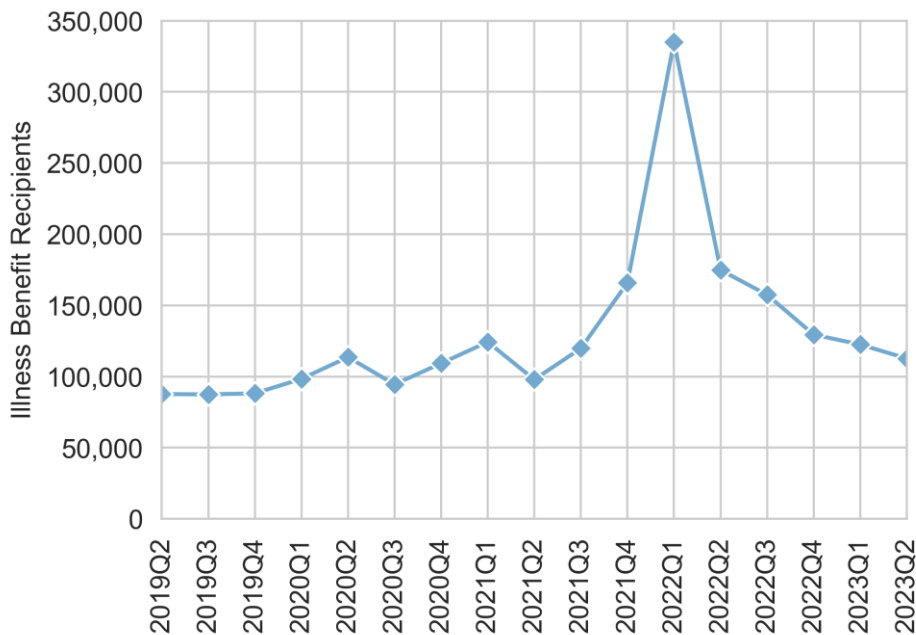




## Illness, Disability, and Caring

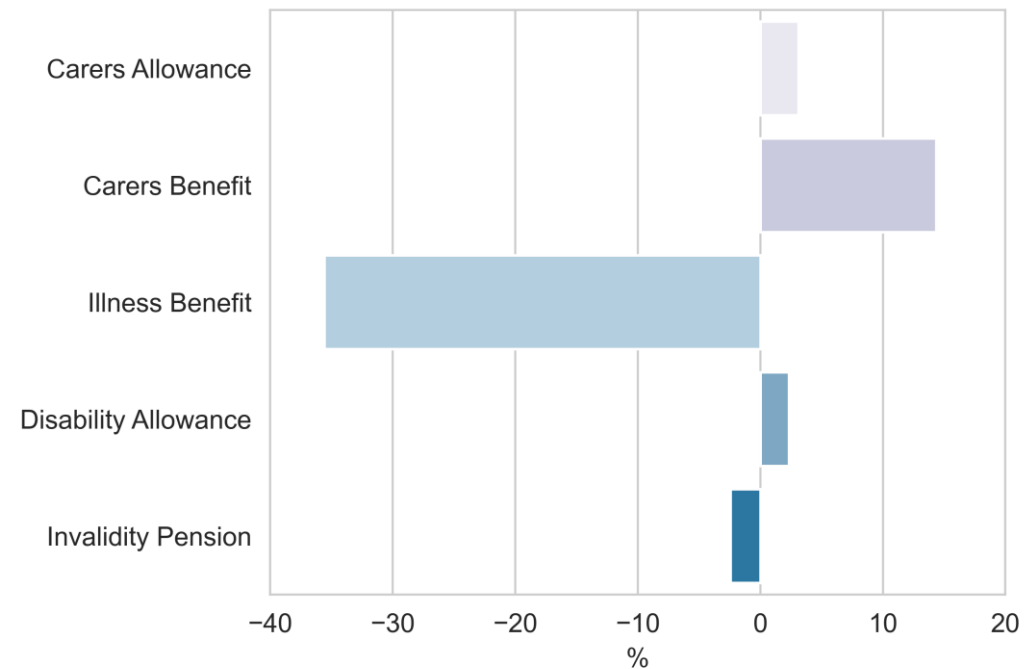
- The number of people paid Illness Benefit in Quarter 2 2023 was 112,670, a decrease of 8% from the previous Quarter, and down by 62,206, or 36%, when compared to Quarter 2 2022.
- In the period April to June 2023, there were 57,575 recipients of Invalidity Pension, a decrease of 260, 0.4% from the previous Quarter. This is the ninth successive Quarter in which there has been a decrease in Invalidity Pension recipients.

Figure 8: Trends in recipient numbers – Illness Benefit



- There were 162,075 people in receipt of Disability Allowance in the second Quarter of 2023, an increase of 2% (3,693) on the year before. The average weekly payment received on this scheme was €271.
- The total number of people receiving Carer's payments in Quarter 2 2023 was 100,604, a rise of 3,455, or 4% from Quarter 2 2022. On average, Carer's Allowance recipients received a payment of €242, while Carer's Benefit recipients received a payment of €303.

Figure 9: Annual Change (%) in recipient numbers by scheme

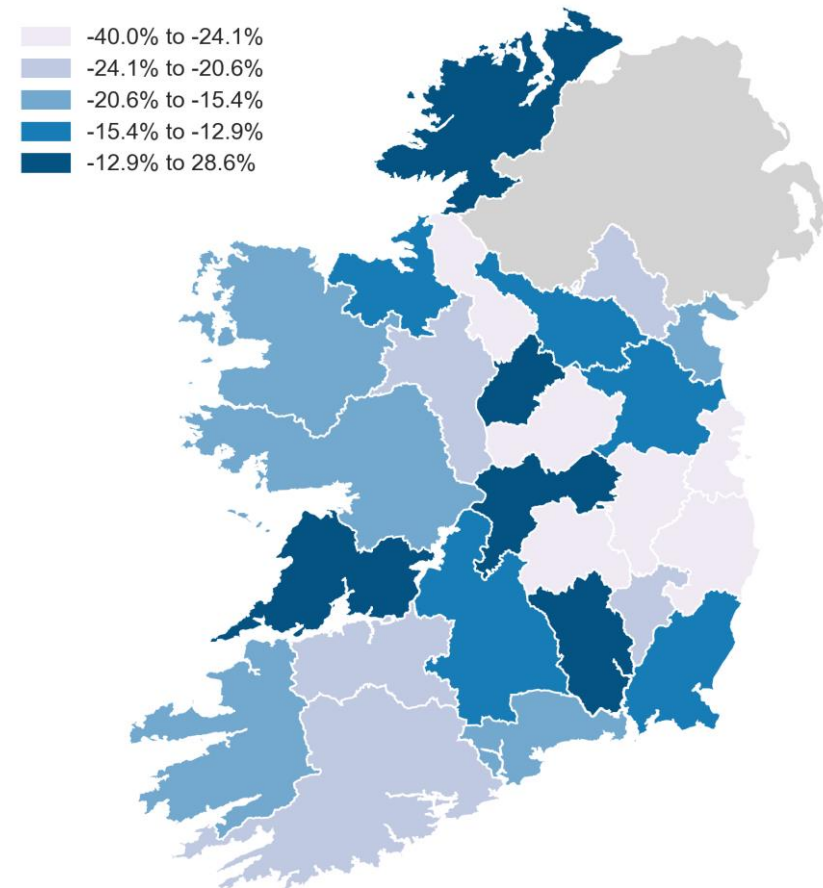




## Children and Supplementary Payments

- In the last quarter, a total of 661,721 families received Child Benefit payments, an increase of 12,579, or 2%, compared to Quarter 2 2022.
- Around 98% (651,213) of recipients of Child Benefit were female, while 2% (10,508) were male.
- The number of people in receipt of the Back to Work Family Dividend fell by 189, or 6%, from Q2 2022 and stood at 2,983 in Q2 2023. The average payment for this scheme was €75.
- The number of recipients of Rent Supplement in Quarter 2 2023 totalled 9,064, a 22% decrease (-2,596) compared to the second Quarter of 2022.
- There were 261,195 people receiving direct payments from the Household Benefits Package<sup>[1]</sup> in the quarter, representing a year-on-year increase of 27,311 or 12%.
- When recipients who had their payment directed to their utility provider and recipients of a free TV Licence only are included, there were 514,372 unique recipients of Household Benefits at the end of June 2023. This is an increase of 2,443, or 0.5%, when compared with the 511,929 recipients at the end of March of 2023.

Figure 10: Annual change (%) in Rent Supplement recipients by county



[1] Includes recipients of cash payments only. Recipients who had payments made directly to their energy supplier as credit against their bills are not included.





## Addition Needs Payment (ANP)

- A total of 21,426 ANPs were awarded in the second Quarter of 2023. This is a decrease of 10% (- 2,323) from Q1 2023, and a decrease of 11% (2,695) compared to Q2 2022.
- Looking at broad ANP category, Bills recorded the highest quarter-on-quarter percentage increase in awarded claims, increasing by 23% from 883 in Q1 2023 to 1,088 in Q2 2023.

- The broad ANP category with the greatest number of awarded claims in the period April to June 2023 was Clothing (8,709), followed by Housing (5,161) and General (5,331). Combined, these three ANP groups account for 87% of all awarded ANP claims in this period.
- Year-to-date ANP expenditure amounted to €34.4 million. Housing accounted for over 63% of total ANP expenditure.

Figure 11 - ANP awarded claims this quarter by broad category

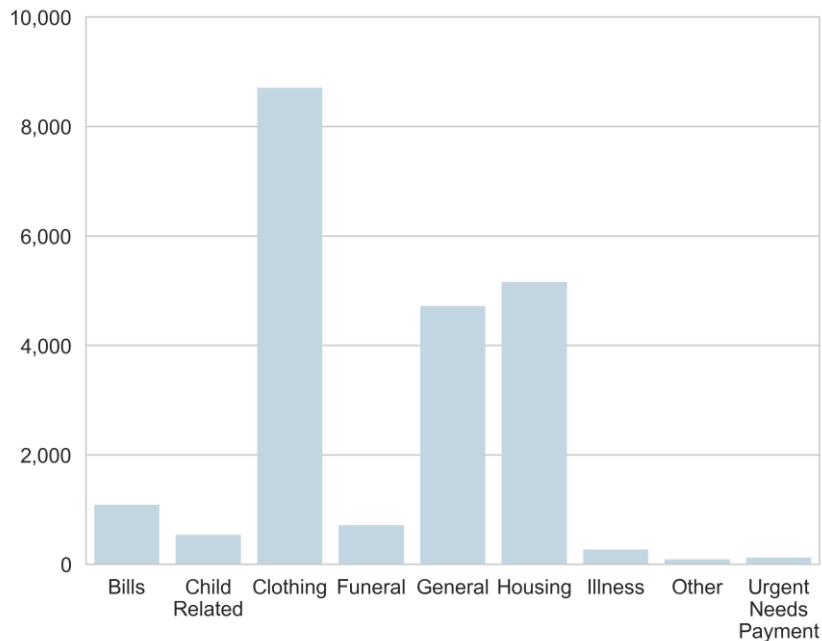
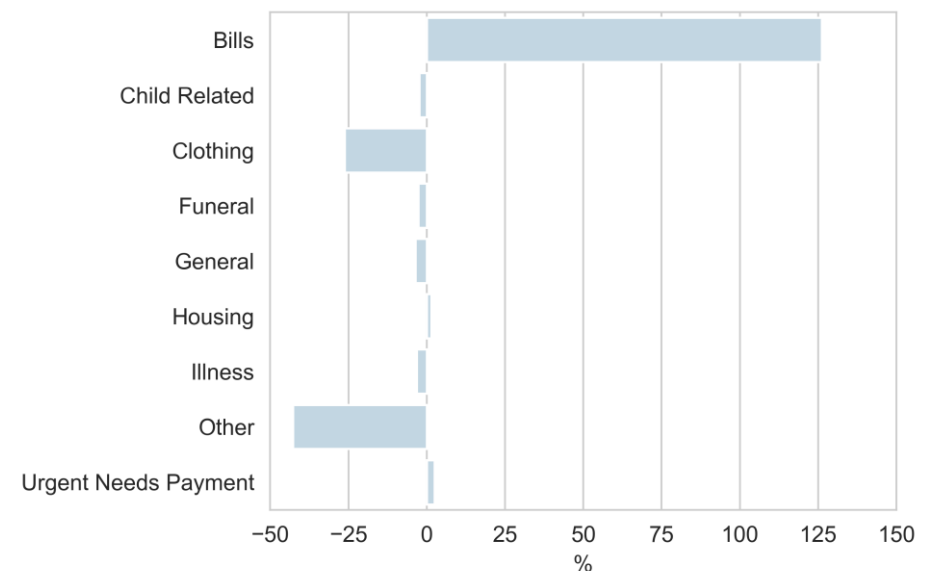


Figure 12 ANP awarded claims year-on-year percentage change





## Quarterly Statistical Report

Table 1 Estimated Income and Expenditure in the Department of Social Protection (€m)

|  | Quarterly    |              |              |              |              |              |              |              |              | Year to Date    |                 |                 |                            |                                 |
|--|--------------|--------------|--------------|--------------|--------------|--------------|--------------|--------------|--------------|-----------------|-----------------|-----------------|----------------------------|---------------------------------|
|  | Q2<br>2021   | Q3<br>2021   | Q4<br>2021   | Q1<br>2022   | Q2<br>2022   | Q3<br>2022   | Q4<br>2022   | Q1<br>2023   | Q2<br>2023   | Jan-Jun<br>2021 | Jan-Jun<br>2022 | Jan-Jun<br>2023 | Change<br>(2023 v<br>2022) | %<br>Change<br>(2023 v<br>2022) |
| <b>Funding Basis</b>                                   |              |              |              |              |              |              |              |              |              |                 |                 |                 |                            |                                 |
| Social Assistance Expenditure (Vote 37) <sup>(a)</sup> | 3,905        | 3,871        | 3,771        | 3,342        | 3,034        | 2,783        | 3,490        | 2,960        | 3,296        | 7,746           | 6,376           | 6,256           | -120                       | -2                              |
| Social Insurance Fund Expenditure <sup>(b)</sup>       | 3,938        | 3,251        | 3,280        | 2,908        | 2,801        | 2,956        | 3,311        | 2,946        | 3,060        | 8,344           | 5,709           | 6,006           | 297                        | 5                               |
| Social Insurance Fund Income <sup>(c)</sup>            | 2,849        | 2,888        | 3,339        | 3,198        | 3,522        | 3,531        | 3,817        | 3,813        | 3,954        | 5,612           | 6,720           | 7,767           | 1,047                      | 16                              |
| Social Insurance Fund Deficit/Surplus <sup>(c-b)</sup> | -1,089       | -363         | 59           | 289          | 721          | 575          | 507          | 867          | 894          | -2,732          | 1,010           | 1,761           | 751                        | 74                              |
| Exchequer Subvention                                   | 1094         | 353          | 291          | 0            | 0            | 0            | 0            | 0            | 0            | 0               | 0               | 0               | 0                          | -                               |
| <b>Social Protection Programme</b>                     |              |              |              |              |              |              |              |              |              |                 |                 |                 |                            |                                 |
| Pensions   | 2,138        | 2,172        | 2,491        | 2,070        | 2,243        | 2,438        | 2,686        | 2,394        | 2,582        | 4,267           | 4,313           | 4,977           | 664                        | 15                              |
| Working Age Income Supports                            | 2,154        | 1,429        | 1,068        | 988          | 880          | 914          | 985          | 937          | 958          | 4,733           | 1,867           | 1,895           | 28                         | 1                               |
| Working Age Employment Supports                        | 1,294        | 1,360        | 1,184        | 809          | 306          | 144          | 180          | 158          | 156          | 2,626           | 1,115           | 314             | -801                       | -72                             |
| Illness, Disability and Carers                         | 1,316        | 1,156        | 1,227        | 1,233        | 1,420        | 1,181        | 1,491        | 1,225        | 1,558        | 2,436           | 2,653           | 2,783           | 130                        | 5                               |
| Children   | 616          | 678          | 632          | 660          | 627          | 713          | 855          | 702          | 789          | 1,271           | 1,287           | 1,491           | 204                        | 16                              |
| Supplementary & Miscellaneous                          | 161          | 168          | 278          | 333          | 190          | 167          | 411          | 312          | 148          | 444             | 523             | 460             | -63                        | -12                             |
| Administration   | 164          | 160          | 171          | 158          | 168          | 177          | 193          | 177          | 165          | 312             | 326             | 343             | 16                         | 5                               |
| <b>Total Expenditure<sup>(a+b)</sup></b>               | <b>7,843</b> | <b>7,122</b> | <b>7,051</b> | <b>6,250</b> | <b>5,835</b> | <b>5,739</b> | <b>6,801</b> | <b>5,906</b> | <b>6,356</b> | <b>16,090</b>   | <b>12,086</b>   | <b>12,262</b>   | <b>176</b>                 | <b>1</b>                        |



## Quarterly Statistical Report

Table 2 Total Recipients per Quarter and mean payment amount

|                                     | Quarter |         |         |         |         |         |         |         |         | Mean Payment € |
|-------------------------------------|---------|---------|---------|---------|---------|---------|---------|---------|---------|----------------|
|                                     | Q2 2021 | Q3 2021 | Q4 2021 | Q1 2022 | Q2 2022 | Q3 2022 | Q4 2022 | Q1 2023 | Q2 2023 | Q2 2023        |
| <b>Pensions</b>                     |         |         |         |         |         |         |         |         |         |                |
| State Pension Contributory          | 460,573 | 466,039 | 470,814 | 474,487 | 479,717 | 484,822 | 488,587 | 493,225 | 498,681 | €306           |
| State Pension Non-Contributory      | 96,333  | 96,473  | 96,489  | 96,132  | 96,418  | 98,331  | 99,270  | 99,966  | 100,238 | €286           |
| Widow(er)'s Contributory Pension    | 125,073 | 125,254 | 125,510 | 125,784 | 126,149 | 126,439 | 126,629 | 126,898 | 127,199 | €317           |
| <b>Working Age Income Supports</b>  |         |         |         |         |         |         |         |         |         |                |
| Jobseeker's Allowance               | 158,189 | 157,808 | 149,956 | 146,518 | 166,809 | 171,823 | 171,586 | 173,639 | 173,002 | €257           |
| Jobseeker's Benefit                 | 54,776  | 61,931  | 60,490  | 82,526  | 81,776  | 82,229  | 67,414  | 65,871  | 64,821  | €243           |
| Jobseeker's Benefit (Self-Employed) | 436     | 475     | 616     | 942     | 1,323   | 1,363   | 1,307   | 1,242   | 1,085   | €302           |
| Pandemic Unemployment Payment       | 487,619 | 225,116 | 111,337 | 84,934  |         |         |         |         |         | -              |
| Maternity Benefit                   | 28,971  | 29,478  | 32,704  | 30,301  | 28,449  | 27,108  | 29,339  | 27,499  | 27,785  | €290           |
| Paternity Benefit                   | 6,657   | 6,527   | 8,410   | 7,259   | 6,352   | 6,992   | 7,416   | 6,710   | 6,486   | €296           |
| Parent's Benefit                    | 12,484  | 17,115  | 17,191  | 15,560  | 19,082  | 24,806  | 24,033  | 20,589  | 23,955  | €298           |
| One Parent Family Payment           | 41,188  | 41,791  | 41,943  | 42,227  | 43,897  | 44,683  | 45,164  | 45,625  | 45,985  | €317           |
| Widows Non-Contributory Pension     | 1,288   | 1,248   | 1,199   | 1,176   | 1,166   | 1,155   | 1,140   | 1,133   | 1,133   | €245           |

Note: Quarterly figures do not represent the numbers and values used by the Department when calculating the Outturn/Estimate for schemes. A yearly calculation is applied to incorporate any seasonal changes and/or adjustments that occur throughout the year on various schemes.



## Quarterly Statistical Report

Table 2 Total Recipients per Quarter and mean payment amount (continued)

|  | Quarter |         |         |         |         |         |         |         |         | Mean Payment € |
|--|---------|---------|---------|---------|---------|---------|---------|---------|---------|----------------|
|  | Q2 2021 | Q3 2021 | Q4 2021 | Q1 2022 | Q2 2022 | Q3 2022 | Q4 2022 | Q1 2023 | Q2 2023 | Q2 2023        |
| <b>Illness Disability and Caring</b>     |         |         |         |         |         |         |         |         |         |                |
| Carer's Allowance                        | 91,648  | 92,675  | 93,004  | 93,382  | 93,185  | 94,000  | 94,409  | 95,284  | 96,071  | €242           |
| Carer's Benefit                          | 4,168   | 4,347   | 4,114   | 4,063   | 3,964   | 4,165   | 4,121   | 4,342   | 4,533   | €303           |
| Disability Allowance                     | 156,162 | 156,829 | 157,448 | 157,837 | 158,382 | 159,308 | 160,134 | 161,073 | 162,075 | €271           |
| Illness Benefit                          | 97,900  | 119,810 | 165,871 | 335,004 | 174,876 | 157,433 | 129,466 | 122,521 | 112,670 | €260           |
| Invalidity Pension                       | 60,195  | 59,905  | 59,300  | 59,196  | 59,015  | 58,308  | 57,887  | 57,835  | 57,575  | €288           |
| <b>Children</b>                          |         |         |         |         |         |         |         |         |         |                |
| Back to Work Family Dividend             | 3,492   | 3,447   | 3,361   | 3,249   | 3,172   | 3,264   | 3,225   | 3,037   | 2,983   | €75            |
| Child Benefit                            | 641,714 | 637,311 | 639,125 | 638,000 | 649,142 | 646,443 | 656,074 | 657,533 | 661,721 | €336           |
| Working Family Payment                   | 48,892  | 49,575  | 49,859  | 50,223  | 50,103  | 50,991  | 51,186  | 51,336  | 51,044  | €168           |
| <b>Supplementary &amp; Miscellaneous</b> |         |         |         |         |         |         |         |         |         |                |
| Rent Supplement                          | 20,056  | 16,951  | 14,420  | 13,042  | 11,660  | 10,669  | 9,987   | 9,489   | 9,064   | €230           |
| Household Benefits <sup>[1]</sup>        | 205,470 | 210,732 | 220,355 | 225,012 | 233,884 | 238,279 | 252,233 | 256,928 | 261,195 | -              |

Note: Quarterly figures do not represent the numbers and values used by the Department when calculating the Outturn/Estimate for schemes. A yearly calculation is applied to incorporate any seasonal changes and/or adjustments that occur throughout the year on various schemes.

[1] Includes recipients of cash payments only. Recipients who had payments made directly to their energy supplier as credit against their bills are not included.



## Quarterly Statistical Report

Table 3 Total recipients of the main Social Protection schemes, by quarter and sex

|                                     | Quarter |         |         |         |         |         |         |         |         |         |  |
|-------------------------------------|---------|---------|---------|---------|---------|---------|---------|---------|---------|---------|--|
|                                     | Q2 2022 |         | Q3 2022 |         | Q4 2022 |         | Q1 2023 |         | Q2 2023 |         |  |
|                                     | Males   | Females | Males   | Females | Males   | Females | Males   | Females | Males   | Females |  |
| <b>Pensions</b>                     |         |         |         |         |         |         |         |         |         |         |  |
| State Pension Contributory          | 287,833 | 191,884 | 290,253 | 194,569 | 291,977 | 196,610 | 294,003 | 199,222 | 296,378 | 202,303 |  |
| State Pension Non-Contributory      | 39,153  | 57,265  | 39,750  | 58,581  | 40,127  | 59,143  | 40,427  | 59,539  | 40,591  | 59,647  |  |
| Widow(er)'s Contributory Pension    | 19,455  | 106,694 | 19,550  | 106,889 | 19,628  | 107,001 | 19,818  | 107,080 | 19,948  | 107,251 |  |
| <b>Working Age Income Supports</b>  |         |         |         |         |         |         |         |         |         |         |  |
| Jobseeker's Allowance               | 83,726  | 83,083  | 85,230  | 86,593  | 86,685  | 84,901  | 87,987  | 85,652  | 87,071  | 85,931  |  |
| Jobseeker's Benefit                 | 39,284  | 42,492  | 36,065  | 46,164  | 33,564  | 33,850  | 33,075  | 32,796  | 31,915  | 32,906  |  |
| Jobseeker's Benefit (Self-Employed) | 698     | 625     | 701     | 662     | 732     | 575     | 731     | 511     | 650     | 435     |  |
| Pandemic Unemployment Payment       |         |         |         |         |         |         |         |         |         |         |  |
| Maternity Benefit                   |         | 28,449  |         | 27,108  |         | 29,339  |         | 27,499  |         | 27,785  |  |
| Paternity Benefit                   | 6,320   | 32      | 6,965   | 27      | 7,379   | 37      | 6,682   | 28      | 6,455   | 31      |  |
| Parent's Benefit                    | 6,081   | 13,001  | 8,928   | 15,878  | 8,473   | 15,560  | 7,093   | 13,496  | 8,245   | 15,710  |  |
| One Parent Family Payment           | 543     | 43,354  | 542     | 44,141  | 552     | 44,612  | 575     | 45,050  | 595     | 45,390  |  |
| Widows Non-Contributory Pension     | 173     | 993     | 172     | 983     | 169     | 971     | 175     | 958     | 176     | 957     |  |



## Quarterly Statistical Report

Table 3 Total recipients of the main Social Protection schemes, by quarter and sex (continued)

|  | Quarter |         |         |         |         |         |         |         |         |         |
|--|---------|---------|---------|---------|---------|---------|---------|---------|---------|---------|
|  | Q2 2022 |         | Q3 2022 |         | Q4 2022 |         | Q1 2023 |         | Q2 2023 |         |
|  | Males   | Females | Males   | Females | Males   | Females | Males   | Females | Males   | Females |
| <b>Illness Disability and Caring</b>     |         |         |         |         |         |         |         |         |         |         |
| Carer's Allowance                        | 21,286  | 71,899  | 21,433  | 72,567  | 21,441  | 72,968  | 21,594  | 73,690  | 21,748  | 74,323  |
| Carer's Benefit                          | 692     | 3,272   | 701     | 3,464   | 687     | 3,434   | 724     | 3,618   | 768     | 3,765   |
| Disability Allowance                     | 88,378  | 70,004  | 88,758  | 70,550  | 88,949  | 71,185  | 89,201  | 71,872  | 89,633  | 72,442  |
| Illness Benefit                          | 66,668  | 108,208 | 60,420  | 97,013  | 46,802  | 82,664  | 44,169  | 78,352  | 41,138  | 71,532  |
| Invalidity Pension                       | 24,061  | 34,954  | 23,688  | 34,620  | 23,447  | 34,440  | 23,385  | 34,450  | 23,213  | 34,362  |
| <b>Children</b>                          |         |         |         |         |         |         |         |         |         |         |
| Back to Work Family Dividend             | 904     | 2,268   | 913     | 2,351   | 843     | 2,382   | 765     | 2,272   | 735     | 2,248   |
| Child Benefit                            | 10,017  | 639,125 | 9,779   | 636,664 | 10,236  | 645,838 | 10,113  | 647,420 | 10,508  | 651,213 |
| Working Family Payment                   | 16,861  | 33,242  | 16,757  | 34,234  | 16,337  | 34,849  | 16,248  | 35,088  | 16,007  | 35,037  |
| <b>Supplementary &amp; Miscellaneous</b> |         |         |         |         |         |         |         |         |         |         |
| Rent Supplement                          | 5,911   | 5,749   | 5,347   | 5,322   | 4,979   | 5,008   | 4,739   | 4,750   | 4,543   | 4,521   |
| Household Benefits <sup>[1]</sup>        | 118,622 | 115,262 | 120,456 | 117,823 | 127,380 | 124,853 | 129,463 | 127,465 | 131,138 | 130,057 |

[1] Includes recipients of cash payments only. Recipients who had payments made directly to their energy supplier as credit against their bills are not included.



## Quarterly Statistical Report

Table 4 Additional Needs Payments, by quarter

|           | Quarter |         |         |         |         |         |
|-----------|---------|---------|---------|---------|---------|---------|
|           | Q1 2022 | Q2 2022 | Q3 2022 | Q4 2022 | Q1 2023 | Q2 2023 |
| Awarded   | 12,758  | 24,121  | 29,266  | 31,079  | 23,749  | 21,426  |
| Rejected  | 2,567   | 5,408   | 11,268  | 19,795  | 13,393  | 14,181  |
| Withdrawn | 177     | 330     | 781     | 978     | 737     | 363     |
| Pending   | -       | -       | -       | 8,041   | 6,383   | 8,681   |

Table 5 Awarded claims by broad ANP category, by quarter

|                         | Quarter       |               |               |               |               |               | Expenditure<br>(€ million) |
|-------------------------|---------------|---------------|---------------|---------------|---------------|---------------|----------------------------|
|                         | Q1 2022       | Q2 2023       | Q3 2022       | Q4 2022       | Q1 2023       | Q2 2023       | YTD 2023                   |
| Bills                   | 466           | 481           | 1,236         | 885           | 883           | 1,088         | 1.27                       |
| Child Related           | 449           | 552           | 555           | 511           | 508           | 539           | 0.2                        |
| Clothing                | 2,357         | 11,802        | 13,213        | 13,921        | 9,955         | 8,709         | 2.42                       |
| Funeral                 | 582           | 737           | 578           | 686           | 864           | 717           | 4.85                       |
| General                 | 3,497         | 4,899         | 6,649         | 7,810         | 5,663         | 4,723         | 3.4                        |
| Housing                 | 4,843         | 5,085         | 6,296         | 6,458         | 5,331         | 5,161         | 21.65                      |
| Illness                 | 288           | 280           | 302           | 280           | 258           | 271           | 0.08                       |
| Other                   | 181           | 164           | 205           | 334           | 146           | 94            | 0.14                       |
| Urgent Needs<br>Payment | 95            | 121           | 232           | 194           | 141           | 124           | 0.36                       |
| <b>Total</b>            | <b>12,758</b> | <b>24,121</b> | <b>29,266</b> | <b>31,079</b> | <b>23,749</b> | <b>21,426</b> | <b>34.37</b>               |

Note that expenditure figures are based on estimates. These figures exclude supplements awarded prior to 2022. These figures are provisional and subject to revision.

Note that the figures provided for claims awarded, disallowed or withdrawn are by the date these actions were recorded on the Department's systems and will include claims registered in previous periods.



## Notes

### Methodology and quality considerations

The expenditure details in this report are based on estimates. The finalised expenditure information can be viewed in the latest Appropriation Accounts for Vote 37<sup>1</sup>, or the latest Annual Statistics Report<sup>2</sup>. Note that the estimated expenditure figures in this report may not add up exactly due to rounding.

When comparing to a previous quarter or previous year, the comparison can sometimes be impacted by the number of pay days that fall in a particular quarter. This may account for skews in expenditure and/or recipient totals in certain quarter periods.

The recipient totals were extracted from the Department's administrative systems and include people who were issued at least one payment for a particular scheme in a given quarter. In the majority of cases the date in which the payment was made reflects the entitlement period, i.e., when the payment was issued the recipient's claim was open. However, payments can be issued in respect to different entitlement periods (arrears payments). The figures produced in this report are calculated with reference to the date the payment was issued and are therefore inclusive of arrears payments. Note that a person can be in receipt of payment for more than one scheme.

The recipient figures quoted in the Annual Statistics report are not directly comparable to the numbers shown in this publication. The Annual Statistics report counts only those awarded and in receipt of payment at a point in time (December 31<sup>st</sup>) to ensure comparability with a series of statistical reports dating back to 1983.

### Glossary of Terms

**Recipient:** A person receiving at least one Social Welfare payment in a given quarter period.

**Social Assistance:** payments funded from voted expenditure, which cover people who do not have sufficient PRSI contributions to qualify for the equivalent social insurance payments, or where entitlement to the social insurance payment has expired. These payments are typically means-tested.

**Social Insurance Fund:** a current account and an investment account managed by the Minister for Social Protection and the Minister for Finance, respectively. The current account consists of monies collected from people in employment, self-employment, and employer contributions. This money is then used to fund social insurance payments.

### Open Data

Each report in this series will be available in formats consistent with the Open Data Technical Framework<sup>3</sup>. Any open data produced by the Department will be accessed through the National Open Data portal at: <https://data.gov.ie/>

### Revisions

Revisions may occur as a result of changes in methodology, an update to a series or errors in the original data. Any significant revisions will be footnoted in the report and will describe the reason for the change and its impact on comparability (. i.e., with other schemes or over time).

1. Published by the Office of the Comptroller and Auditor General at: <https://www.audit.gov.ie/en/find-report/publications/appropriation%20accounts/>  
2. Available at: <https://www.gov.ie/dsp/statistics>  
3. Available at: <https://data.gov.ie/pages/opendatatechnicalframework>