

MSW Recycling Targets Task Force Meeting

20 July 2023

MISSION:

TO INCREASE MSW RECYCLING RATE
FROM 41% TO 55% BY 2025

Changes and improvements need to be in place by the end of
2024 in order to hit our target throughout 2025

WHY?

Two reasons:

Reason 1:

Failure to meet our EU targets will lead to hefty fines, as much as €100k/day = **€36.5million**/annum, until the targets are met.

Even after paying such fines Ireland will still have to do whatever is needed to meet the targets.

Best to do what is needed before the fines hit.

Reason 2:

Failure to meet our EU targets will lead to accusations of market failure, supporting calls for remunicipalisation of the privatized waste business.

The Task Force's Mission consists of two parts:

Part 1.

Determine how Ireland's recycling rates compares with other leading recycling countries in Europe and uncover the detail behind their achievements in order to determine if they are doing things we are not, or if they are doing things contrary to current Eurostat rules for measuring recycling rates.

Search



in



CONTACT



SERVICES

CASE STUDIES

REPORTS

NEWS & VIEWS

ABOUT US

Creative & Practical - Eunomia is an independent consultancy dedicated to helping our clients to achieve better environmental and commercial outcomes.



Local
Environment



Policy



Sustainable
Business



Finance &
Investment

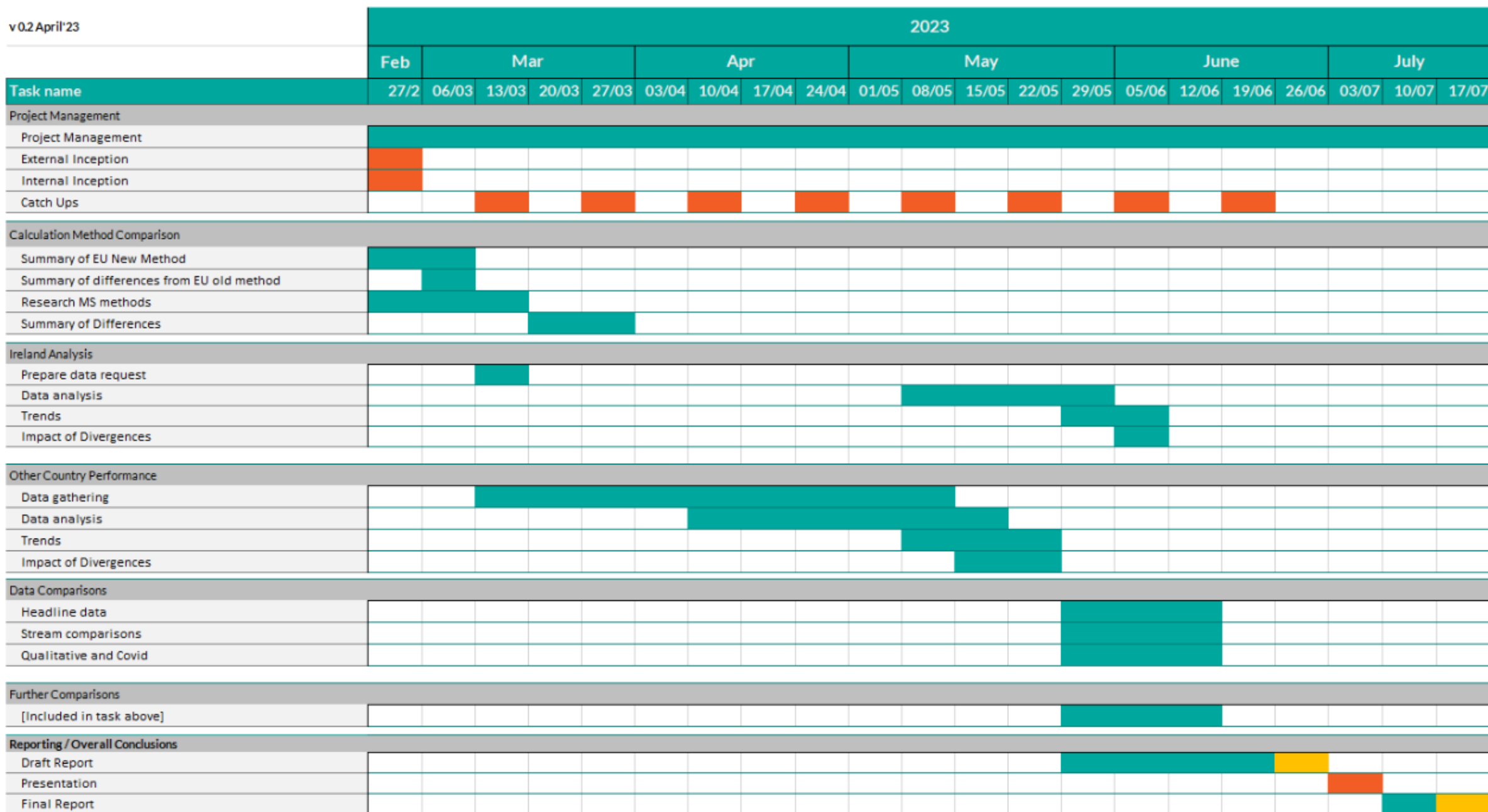
SERVICES

CASE STUDIES

AMERICAS

Project Gantt Chart

v0.2 April'23



task
meeting/event
deliverable/submission

The Task Force met with the NWPCO who then sent us lots of interesting data



Postal Address - Áras an Chontae, Charleville Road, Tullamore, Co. Offaly, R35 F893
Office - 5 Cormac Street, Kilcruttin, Tullamore, Co Offaly, R35 K821
Telephone: 057 9373710 Email: contactus@nwcpo.ie

Home	Forms	Permit Search	Public Notices	
----------------------	-----------------------	-------------------------------	--------------------------------	--



National Waste Collection Permit Office Public Notices



[Permit Search](#)



[Local Authority Waste Facility Register](#)

Part 2.

Identify areas Ireland can improve its recycling rates sufficiently to meet the targets, on time.

The 2025 MSW recycling target is 55%.

Ireland is currently at 41%, so we need to increase our recycling rates by 14%.

For every 32,000 tonnes increase in recycling material we gain 1%.

So here are the areas the Task Force has identified so far and what we've done about them:

Reclassification of incoming skips, roll-ons and compactors

A significant proportion of skips, roll-ons and compactors could possibly be classified with a non-MSW code.

eg a kitchen re-build where the material is essentially C&D,

eg: Manufacturing offcuts/residue in skips or compactors where there could be a valid alternative EWC code.

We have studied the latest EPA National Waste Statistics report and have conservatively estimated there could be a 2.3% gain in recycling rates if materials were more appropriately classified coming into facilities, maybe a lot more.

= 2.3% increase

Roll out brown bins to the remaining households throughout the country

Ref EPA 2020 National Waste statistics 64% of houses with a kerbside collection have brown bins with 225kg/bin/annum.

So if the remaining 36% of houses got brown bins this could yield another:

$$1,400,000 \times 36\% = 504,000 \times 223\text{kg} = 112,392 \text{ tonnes}$$

= 3.5% increase

Provide kitchen caddies to low users of their brown bins



The main reason brown bins are not used by some customers is that those houses do not have capacity in their kitchen to sort a third waste stream.

Estimate 30% of households are in this sector, so by providing those low BB users with caddy starter packs and education this could yield (from the 64% who already have BBs) $896,000 \times 30\% \times 223\text{kg} = 59,942$ tonnes

= 2% increase

Roll out brown bins to commercial customers

Commercial brown bin collections, excluding FSM, sit at 100,000 tonnes p/a and this comes mainly from restaurants, hotels, takeaways and cafes etc. Apart from those outlets, only a very small percentage of commercial premises already have brown bins.

If every commercial premises in the country from garages to solicitors offices had a brown bin service we could probably capture another 50,000 tonnes

= 1.5% increase

Roll brown bins and caddies to all apartments

There are 200,000 apartments in the country. Only around 15% already have brown bin collections leaving 170,000 without.

If we deliver the brown bin service to all 170,000 this could generate $149\text{kg} \times 170,000 = 25,300$ tonnes of brown bin material out of the residual waste bin and into brown bins.

Following meetings between the Task Force and the WERLAs it has been agreed the collectors will provide the WERLAs with the PMA details for each apartment block, so that they can identify the OMC behind each apartment block and will contact each requesting they declare their current waste management service levels.

= 0.75% increase

Provide a second/larger recycling bin to customers who need one.

If a customer fills their recycling bin every two weeks, the chances are they will have put any additional recycling in either their residual waste or brown bin.

Assuming 30% of all household customers could do with additional DMR capacity, then the 191kg DMR average could increase by 50% from customers given extra capacity.

So from the 1.4million homes in Ireland there are 450,000 who could recycle more if they had greater bin capacity.
That's $450,000 \times 96\text{kg} = 43,200$ tonnes of additional DMR.

= 1.3% increase

Contamination in Domestic Recycling Bins

Contamination in domestic recycling bins is around 30% nationwide.



Using Contamination Detection technology (cameras looking in the hopper) this contamination level can easily be cut by half, in reality we can get to single figure % contamination levels.



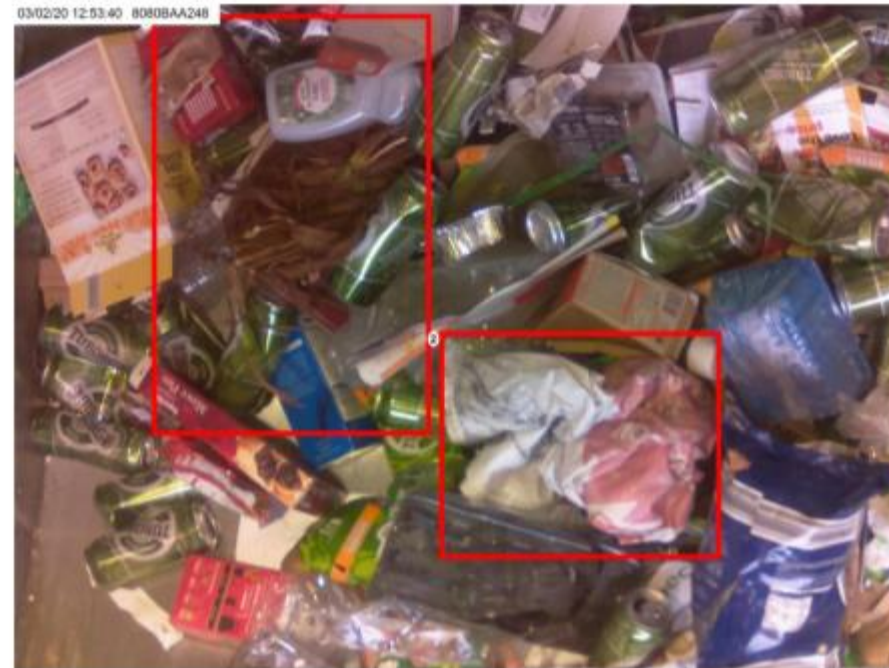
Cappagh Road, Finglas, Dublin 11
Ph: 1890 626262
Email: contamination@pandagreen.ie

Lift Date: 03/02/2020

Account:

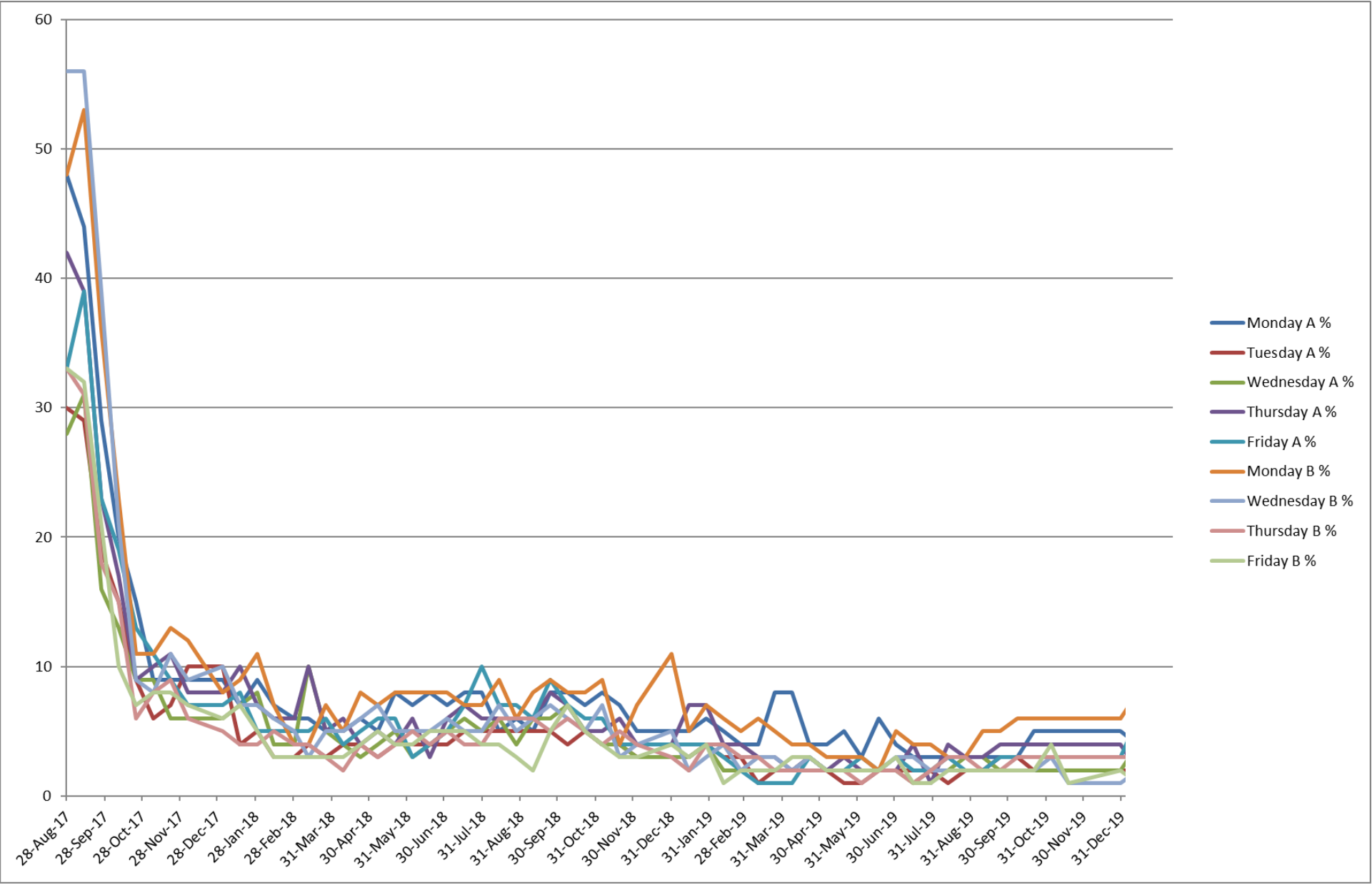
Dundrum
Dublin 14

We have detected non-compliant items in your green recycling bin. To check what is permitted in your green bin go to <http://bit.ly/RecyclingPanda> or call us on 1890 626262. Please empty the contents of any bags into your recycling bin loosely. Thank you for your co-operation.



Number	Contamination	Level	Remarks
1	Organic to BROWN BIN	1	
2	Waste to BLACK BIN	1	Woven plastic fabrics unsuitable for recycling

Bt89 % of pictures showing contamination over time





In everyday use, the system changes people's behavior such that they stop contaminating their recycling bin and then they remove any recyclables from their waste and brown bins bin and add them to their recycling bin.

A reasonable estimate of what this would do to the recycling rate is for 10% of the 722,911 tons of kerbside residual waste to be moved to either the recycling or brown bin. That's 72,291 tonnes more recyclables.

=2% increase

Commercial Collections

Contamination levels in commercial recycling bins regularly exceeds 50%

GENERAL WASTE



The latest EPA waste characterisation study found over 70% of material in commercial waste bins should be in the recycling or brown bins.

There is further analysis of the commercial collection figures to be done to get more accurate figures, but for the moment let's assume there are 750k tonnes of commercial waste collected in wheelie bins.

70% is 525k tonnes. If, **by whatever means possible**, we could divert even half of that material into the correct bins that's a massive 262K tonnes of recyclable materials to be gained.

= 8.2% increase

Green waste from gardens, parks & roads

We estimate there is at least 100,000 tons of green waste collected but not recorded.

This material split 60% from landscapers & home owners and 40% from Local Authorities.



Most of this material currently just “disappears”.

Bringing 100k tonnes above and below the MSW / Recyclate line could give us:

= 1.78% increase

Textiles – are we missing out on 48k tonnes of recycled textiles per annum?



48,000 tonnes of textiles goes for re-use both domestically and abroad.

There could be some easy gains for our recycling figures if reused materials in general can come into the recycling net. We have a meeting arranged with the EPA on 2nd August to discuss this and some other recycling related matters.

= 1.5%

Incentivised charging

There is a body of work to be done determining if each collector is using a suitably incentivised charging scheme which promotes recycling.

Leo Duffy in the NWPCO has tendered for a consultant to survey waste collection charges and make recommendations for setting standards

Communication

Customers need to be updated on the range of plastics now accepted in the recycling bin

Plastic film in particular, banned for so long, a fresh message is required.

Summary of potential increase to MSW Recycling rates

Reclassification of skip, roll-on and compactor MSW loads	= 2.3% (Potentially much higher)
Roll out of brown bin to remaining 36% of households	= 3.5%
Provide Kitchen Caddies to low users of brown bins	= 2%
Roll out brown bins to commercial customers	= 1.5%
Roll out of brown bins to apartments	= 0.75%
Provide additional recycling bin capacity to heavy users	= 1.3%
Reduce contamination in household recycling bins	= 2%
Properly segregate commercial waste and recycling bins	= 8.2%
Green waste from gardens, parks, landscapers	= 1.78%
Capture recycled textiles in the recycling net	= 1.5%
Total potential to increase our recycling rates	= 24.83%, we need just 14%

Task Force engagement with the WERLAs

Representatives of the Task Force have met a number of times with the WERLAs to discuss the sharing of information:

- Eircodes of every collector customers, to allow Werla's identify those houses with no waste collection service
- Top 10 non-compliant commercial customers for each collector in each county they operate in so the WERLAs can instruct Local Authority enforcement staff to visit the commercial customers on the lists provided, anonymously.
- All apartment addresses as well as the Property Management Agent contact details for each
- Meeting again in September.