



Marine Notice No. 31 of 2024

Amended: 24/05/2024

*Notice to all Shipowners, Fishing Vessel Owners, Agents, Shipmasters, Skippers, Fishers,
Yachtsmen and Seafarers*

Greenlink Interconnector Ltd. (GIL) Electricity Interconnector, South-East Co. Wexford - Subsea Rock Installation Activities

1. Notice of Activity

The Department of Transport has been advised that Greenlink Interconnector Ltd (GIL) on behalf of Jan De Nul Luxembourg S.A. is proposing to develop an electricity interconnector to allow for power cable installation and power cable protection activities. Following the offshore cable installation with the cable lay vessel “**Connector**”, cable burial and trenching activities are ongoing along the interconnector route. In parallel with the final cable burial activities, the subsea rock installation (SRI) operation activities will be undertaken between **24 May 2024** and **31 July 2024**, subject to weather and operational constraints.

2. Location of Activity

The operations will take place along the planned interconnector route between the landfall location near Freshwater West, Pembroke, Wales and the landfall location near Baginbun Beach, Co. Wexford, Ireland. The coordinates of the planned route are available in Appendix 1 to this Marine Notice. A map of the proposed route with indicator points is available in Appendix 2.

3. Vessel Details

The operations will be performed by the SRI vessel “**Simon Stevin**” (**Call Sign: LXUB**). The vessel will have a fallpipe deployed either over the side or underneath the hull. During these operations, it will be restricted in its ability to maneuver. All vessels operating within this area are requested to keep a wide berth and pass at minimum speed to reduce vessel wash. The vessel will listen to VHF channel 16 and can set any other channel as required.

4. Contact Details

Enquiries regarding the contents of this Marine Notice or any other relevant matters should be directed to:

- Nick Maene
Offshore Manager
Tel: +32 479 61 75 99
Email: nick.maene@jandenul.com
- Nigel Proctor
Fisheries Liaison Officer
Tel: +44 1964 624423
Email: n.proctor@precisionmarine.co.uk

All mariners are reminded of their responsibilities under the International Collision Regulations and of [Marine Notice No. 17 of 2007](#), which gives general advice in relation to the activities of vessels engaged in survey work for hydrographic, seismic, fishing research and underwater operations.

The International Regulations for Prevention of Collisions at Sea (COLREGS) are implemented in Irish law by the *Merchant Shipping (Collision Regulations) (Ships and Water Craft on the Water) Order 2012* [S.I. No. 507 of 2012] and the *Signals of Distress (Ships) Rules 2012* [S.I. No.170 of 2012]. [See Marine Notice No. 06 of 2013](#). These Statutory Instruments may be purchased by mail order from Government Publications, Office of Public Works, Mountshannon Road, Dublin, D08 XA06 Tel: (046) 9423100. They are also available online at: www.irishstatutebook.ie.

Note: Marine Notices are issued purely for maritime safety and navigation reasons and should not be construed as conferring rights or granting permissions.

Irish Maritime Administration,
Department of Transport,
Leeson Lane, Dublin 2, D02 TR60, Ireland.

21/05/2024

Amended: 24/05/2024

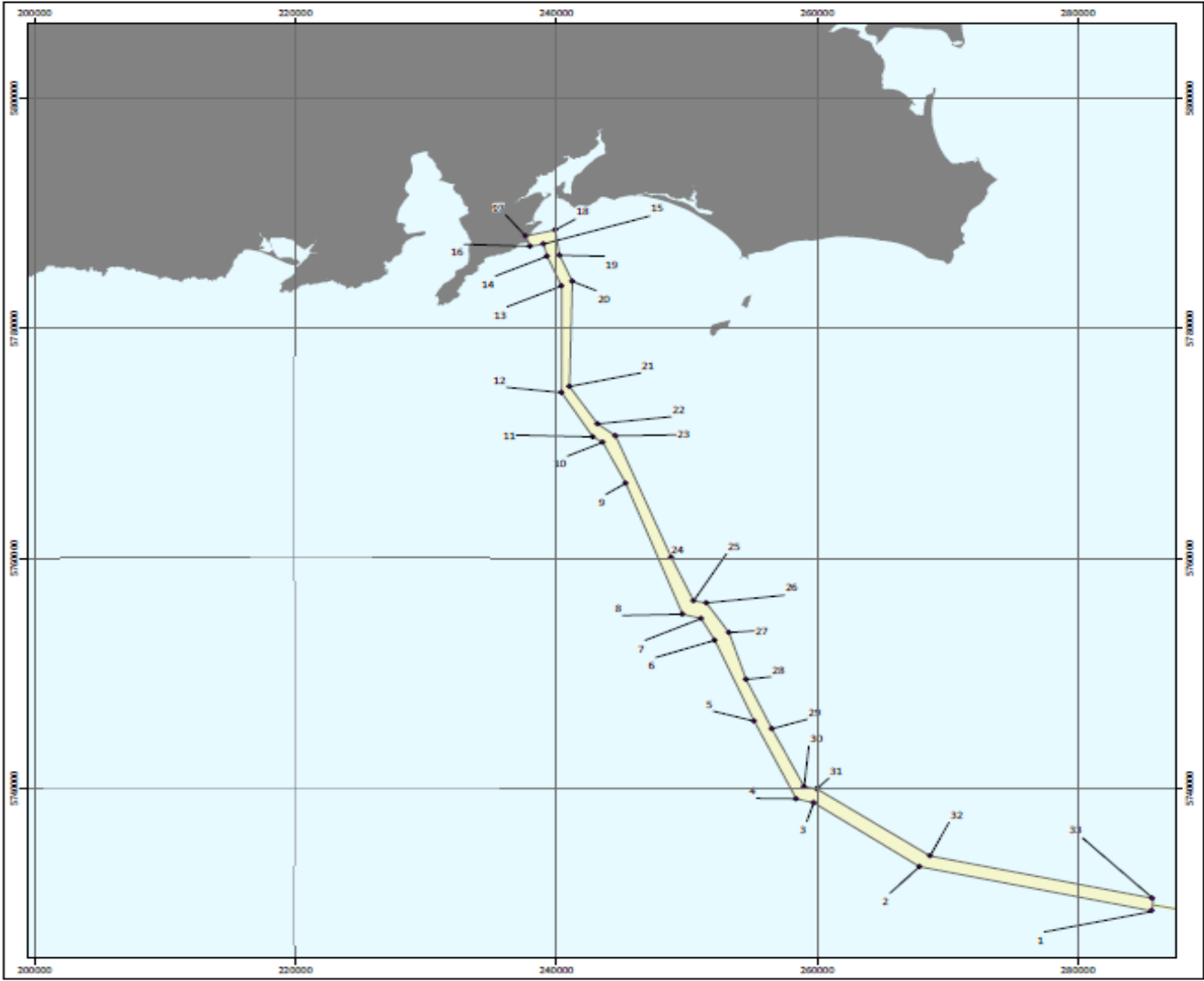
Encl: Appendix 1: Coordinates of the planned route
Appendix 2: Proposed route indicator points

For any technical assistance in relation to this Marine Notice, please contact:
The Marine Survey Office, email: MSO@transport.gov.ie.
For general enquiries, please contact the Maritime Safety Policy Division, email:
MaritimeSafetyPolicyDivision@transport.gov.ie.
Written enquiries concerning Marine Notices should be addressed to:
Dept. of Transport, Maritime Safety Policy Division, Leeson Lane, Dublin 2, D02 TR60, Ireland.
email: MarineNotices@transport.gov.ie or visit us at: www.gov.ie/transport.

Appendix 1: Coordinates of the planned route

	Latitude (DMS)	Longitude (DMS)
1	51° 40' 27.682" N	6° 6' 0.000" W
2	51° 42' 6.124" N	6° 21' 34.374" W
3	51° 44' 53.292" N	6° 28' 50.833" W
4	51° 45' 2.200" N	6° 30' 0.705" W
5	51° 48' 35.450" N	6° 33' 5.520" W
6	51° 52' 18.212" N	6° 36' 1.270" W
7	51° 53' 17.302" N	6° 37' 0.872" W
8	51° 53' 27.469" N	6° 38' 15.936" W
9	51° 59' 27.932" N	6° 42' 34.167" W
10	52° 1' 20.061" N	6° 44' 15.629" W
11	52° 1' 33.813" N	6° 44' 56.723" W
12	52° 3' 34.188" N	6° 47' 13.310" W
13	52° 8' 33.446" N	6° 47' 38.411" W
14	52° 9' 54.896" N	6° 48' 43.172" W
15	52° 10' 29.457" N	6° 49' 0.763" W
16	52° 10' 20.862" N	6° 49' 54.377" W
17	52° 10' 48.898" N	6° 50' 14.910" W
18	52° 11' 10.156" N	6° 48' 16.899" W
19	52° 9' 59.507" N	6° 47' 53.288" W
20	52° 8' 48.382" N	6° 46' 55.760" W
21	52° 3' 52.758" N	6° 46' 43.289" W
22	52° 2' 11.189" N	6° 44' 40.950" W
23	52° 1' 39.627" N	6° 43' 25.648" W
24	51° 56' 5.122" N	6° 39' 14.558" W
25	51° 54' 5.672" N	6° 37' 35.435" W
26	51° 54' 1.686" N	6° 36' 42.909" W
27	51° 52' 41.092" N	6° 35' 6.010" W
28	51° 50' 31.950" N	6° 33' 47.021" W
29	51° 48' 16.569" N	6° 31' 53.232" W
30	51° 45' 37.508" N	6° 29' 32.056" W
31	51° 45' 32.509" N	6° 28' 40.119" W
32	51° 42' 37.307" N	6° 20' 55.207" W
33	51° 41' 2.744" N	6° 6' 0.000" W

Appendix 2: Proposed route indicator points



GREENLINK INTERCONNECTOR
ROUTE OVERVIEW
 Simplified Construction Corridor
 IRELAND

Drawing No: P2377-LOC-007

Legend

- Simplified Points
- Simplified corridor (~800m)

Date	6th December 2022
Projection	WGS_1984_UTM_Zone_30N
Spheroid	WGS_1984
Datum	D_WGS_1984
Data Source	GEBCO; EMODNET; ESR; Greenlink
File Reference	I:\P2377\Mod\04_LOC_P2377-LOC-000.mxd
Created By	Chris Carroll
Reviewed By	N/A
Approved By	Chris Carroll

Co-financed by the European Union
 Connecting Europe Facility

© Mars Ltd. 2022
 All rights reserved.