



## Marine Notice No. 21 of 2024

*Amended: 10/06/2024*

*Amended: 21/06/2024*

*Notice to all Shipowners, Fishing Vessel Owners, Agents, Shipmasters, Skippers, Fishers,  
Yachtsmen and Seafarers*

### Greenlink Interconnector Offshore Cable Burial Works Co. Wexford

#### 1. Notice of Activity

The Department of Transport has been advised that Greenlink Interconnector Ltd is proposing to develop an electricity interconnector to allow for power cable installation and power cable protection activities. After the cable is laid offshore by the cable lay vessel “**Connector**”, cable burial and trenching activities will be performed along the planned interconnector route. These activities will be undertaken between **13 April 2024** and **06 July 2024**, subject to weather and operational constraints.

#### 2. Location of Activity

The operations will take place along the planned interconnector route between the landfall location near Baginbun Beach, Co. Wexford, and the middle of the Irish Sea. The coordinates of the planned route are available in Appendix 1 to this Marine Notice. A map of the proposed route with indicator points is available in Appendix 2, while a map of the nearshore focus area is available in Appendix 3.

#### 3. Details of Survey Vessel

The operations will be performed by the trenching support vessel (TSV) “**Symphony**” (Call Sign: **LXTT** and **TSV Grand Canyon III (Call Sign: LACJ8)** which will be sailing on **dynamic positioning with the trenching vehicle subsea tracking on the seabed along cable route**. These vessels will have a trenching vehicle deployed or a remotely operated vehicle for survey activities deployed over the side. As the vessels will be restricted in their ability to maneuver, all vessels operating within this area are requested to keep a wide berth and pass at minimum speed to reduce vessel wash. The vessel will be listening to VHF channel 16 and can set any other channel as required.

#### 4. Contact Details

Enquiries regarding the contents of this Marine Notice, or any other relevant matters, should be directed to:

- Thomas Den Haese  
(Tel): +32 478 49 0754  
Email: [Thomsa.DenHaese@jandenul.com](mailto:Thomsa.DenHaese@jandenul.com)
- Kris Vande Walle  
Email: [kris.vandewalle2@jandenul.com](mailto:kris.vandewalle2@jandenul.com)
- Pieter Duchi  
(Tel): + 32 497 91 4125  
Email: [pieter.duchi@jandenul.com](mailto:pieter.duchi@jandenul.com)
- Alex Verhofstede  
(Tel): + 32 496 56 6282  
Email: [alex.verhofstede@jandenul.com](mailto:alex.verhofstede@jandenul.com)
- Nigel Proctor BSc. (Hons) MIBiol CBiol  
Fisheries Liaison Officer  
Precision Marine Survey Limited  
Tel: +44 1964 624423  
Mobile: +44 7702 730891  
E-mail: [n.proctor@precisionmarine.co.uk](mailto:n.proctor@precisionmarine.co.uk)

**All mariners are reminded of their responsibilities under the International Collision Regulations and of [Marine Notice No. 17 of 2007](#), which gives general advice in relation to the activities of vessels engaged in survey work for hydrographic, seismic, fishing research and underwater operations.**

The International Regulations for Prevention of Collisions at Sea (COLREGS) are implemented in Irish law by the *Merchant Shipping (Collision Regulations) (Ships and Water Craft on the Water) Order 2012* [S.I. No. 507 of 2012] and the *Signals of Distress (Ships) Rules 2012* [S.I. No.170 of 2012]. [See Marine Notice No. 06 of 2013](#). These Statutory Instruments may be purchased by mail order from Government Publications, Office of Public Works, Mountshannon Road, Dublin, D08 XA06 Tel: (046) 9423100. They are also available online at: [www.irishstatutebook.ie](http://www.irishstatutebook.ie).

**Note:** Marine Notices are issued purely for maritime safety and navigation reasons and should not be construed as conferring rights or granting permissions.

Irish Maritime Administration,  
Department of Transport,  
Leeson Lane, Dublin 2, D02 TR60, Ireland.

12/04/2024

Amended: 10/06/2024

Amended: 21/06/2024

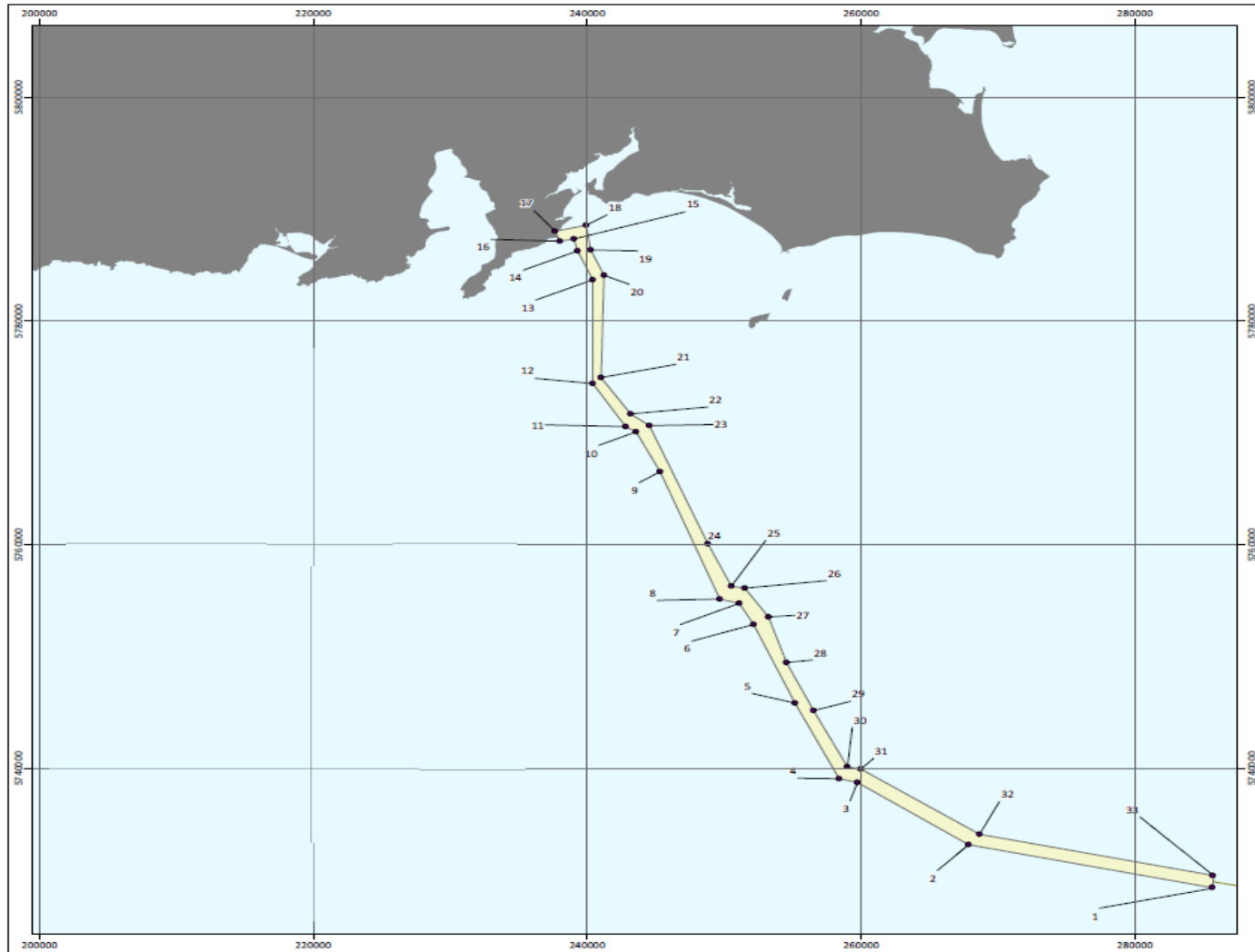
Encl: Appendix 1: Coordinates of Operations Area  
Appendix 2: Map of Operations Area  
Appendix 3: Nearshore Focus Area

For any technical assistance in relation to this Marine Notice, please contact:  
The Marine Survey Office, email: [MSO@transport.gov.ie](mailto:MSO@transport.gov.ie).  
For general enquiries, please contact the Maritime Safety Policy Division, email:  
[MaritimeSafetyPolicyDivision@transport.gov.ie](mailto:MaritimeSafetyPolicyDivision@transport.gov.ie).  
Written enquiries concerning Marine Notices should be addressed to:  
Dept. of Transport, Maritime Safety Policy Division, Leeson Lane, Dublin 2, D02 TR60, Ireland.  
email: [MarineNotices@transport.gov.ie](mailto:MarineNotices@transport.gov.ie) or visit us at: [www.gov.ie/transport](http://www.gov.ie/transport).

**Appendix 1: Coordinates of Operations Area**

	<b>Latitude</b>	<b>Longitude</b>
1	51° 40' 27.682" N	6° 6' 0.000" W
2	51° 42' 6.124" N	6° 21' 34.374" W
3	51° 44' 53.292" N	6° 28' 50.833" W
4	51° 45' 2.200" N	6° 30' 0.705" W
5	51° 48' 35.450" N	6° 33' 5.520" W
6	51° 52' 18.212" N	6° 36' 1.270" W
7	51° 53' 17.302" N	6° 37' 0.872" W
8	51° 53' 27.469" N	6° 38' 15.936" W
9	51° 59' 27.932" N	6° 42' 34.167" W
10	52° 1' 20.061" N	6° 44' 15.629" W
11	52° 1' 33.813" N	6° 44' 56.723" W
12	52° 3' 34.188" N	6° 47' 13.310" W
13	52° 8' 33.446" N	6° 47' 38.411" W
14	52° 9' 54.896" N	6° 48' 43.172" W
15	52° 10' 29.457" N	6° 49' 0.763" W
16	52° 10' 20.862" N	6° 49' 54.377" W
17	52° 10' 48.898" N	6° 50' 14.910" W
18	52° 11' 10.156" N	6° 48' 16.899" W
19	52° 9' 59.507" N	6° 47' 53.288" W
20	52° 8' 48.382" N	6° 46' 55.760" W
21	52° 3' 52.758" N	6° 46' 43.289" W
22	52° 2' 11.189" N	6° 44' 40.950" W
23	52° 1' 39.627" N	6° 43' 25.648" W
24	51° 56' 5.122" N	6° 39' 14.558" W
25	51° 54' 5.672" N	6° 37' 35.435" W
26	51° 54' 1.686" N	6° 36' 42.909" W
27	51° 52' 41.092" N	6° 35' 6.010" W
28	51° 50' 31.950" N	6° 33' 47.021" W
29	51° 48' 16.569" N	6° 31' 53.232" W
30	51° 45' 37.508" N	6° 29' 32.056" W
31	51° 45' 32.509" N	6° 28' 40.119" W
32	51° 42' 37.307" N	6° 20' 55.207" W
33	51° 41' 2.744" N	6° 6' 0.000" W

## Appendix 2: Map of Operations Area



The bathymetric, waterline and Digital Terrain Model data products have been derived from the 2015Ordnance Survey (OS) Bathymetry product. <http://www.ordnancesurvey.co.uk>, ORND Competition Group (2011) ORND 001. Grid (utm:104386), 483110e 584540n 483440e 584600n. © 2011

### GREENLINK INTERCONNECTOR

#### ROUTE OVERVIEW

#### Simplified Construction Corridor

#### IRELAND

---

Drawing No: P2377-LOC-007
B

---

**Legend**

- Simplified Points
- Simplified corridor (~800m)

NOTE: Not to be used for navigation

Date	6th December 2022
Projection	WGS_1984_UTM_Zone_30N
Spheroid	WGS_1984
Datum	D_WGS_1984
Data Source	GEBCO; EMODNET; ESR; Greenlink
File Reference	J:\P2377\Mxd\04_LOC\ P2377-LOC-002.mxd
Created By	Chris Carroll
Reviewed By	N/A
Approved By	Chris Carroll

Co-financed by the European Union  
Connecting Europe Facility

© Marine 04, 2022  
All rights reserved.

### Appendix 3: Nearshore Focus Area

