



Marine Notice No. 34 of 2024

*Notice to all Shipowners, Fishing Vessel Owners, Agents, Shipmasters, Skippers, Fishers,
Yachtsmen and Seafarers*

Southeast Coast Area - Cork and Waterford Hydrographic and Geophysical Surveys

1. Notice of Activity

The Department of Transport has been advised by the Department of Environment, Climate and Communications (DECC) that they will be undertaking hydrographic and geophysical surveys in the South Coast Designated Maritime Area Plan (DMAP). Survey activities will take place between **6 July** and **20 September 2024** for a total of approximately 52 days, subject to weather and operational constraints.

2. Location of Activity

The survey area is on the southeast coast between Cork and Waterford, between 10m – 75m water depth. Boundary coordinates of where survey operations are expected to take place are provided in the table below.

Point	Latitude	Longitude
1	51° 41.084' N	008° 26.235' W
2	51° 47.521' N	008° 16.520' W
3	51° 47.531' N	008° 15.453' W
4	51° 52.683' N	007° 51.951' W
5	51° 50.288' N	007° 48.646' W
6	51° 56.453' N	007° 30.699' W
7	52° 03.452' N	007° 24.467' W
8	52° 03.900' N	007° 01.831' W
9	52° 01.150' N	007° 01.950' W
10	52° 01.048' N	006° 56.070' W
11	51° 55.655' N	006° 56.318' W
12	51° 55.100' N	006° 27.316' W
13	51° 57.783' N	006° 27.166' W
14	51° 57.523' N	006° 15.692' W
15	51° 42.247' N	006° 18.410' W
16	51° 34.886' N	006° 34.685' W
17	51° 36.393' N	006° 34.685' W

18	51° 29.953' N	007° 02.804' W
19	51° 38.788' N	007° 06.075' W
20	51° 38.085' N	007° 19.607' W
21	51° 41.149' N	007° 27.776' W
22	51° 43.648' N	007° 27.813' W
23	51° 44.244' N	007° 39.375' W
24	51° 40.795' N	007° 57.620' W
25	51° 34.518' N	008° 19.023' W

3. Details of the Survey Vessel

The survey works will be conducted by the vessel “RV Tom Crean” (Call Sign: EIYX3) which will display the relevant lights and shapes. As the survey vessel will be restricted in its ability to manoeuvre when surveying, other vessels are kindly requested to keep a wide berth and navigate the area with caution. Mariners are advised to keep continuous watch on VHF radio channel 16 when navigating the area.

4. Contact Details

Enquiries or supporting information in relation to the above marine notice should be directed to the Department of Environment, Climate & Communications.

- Jo Coloe
Tel: 01 6782000
Email: Jo.Coloe@decc.gov.ie

All mariners are reminded of their responsibilities under the International Collision Regulations and of [Marine Notice No. 17 of 2007](#), which gives general advice in relation to the activities of vessels engaged in survey work for hydrographic, seismic, fishing research and underwater operations.

The International Regulations for Prevention of Collisions at Sea (COLREGS) are implemented in Irish law by the *Merchant Shipping (Collision Regulations) (Ships and Water Craft on the Water) Order 2012* [S.I. No. 507 of 2012] and the *Signals of Distress (Ships) Rules 2012* [S.I. No.170 of 2012]. [See Marine Notice No. 06 of 2013](#). These Statutory Instruments may be purchased by mail order from Government Publications, Office of Public Works, Mountshannon Road, Dublin, D08 XA06 Tel: (046) 9423100. They are also available online at: www.irishstatutebook.ie.

Note: Marine Notices are issued purely for maritime safety and navigation reasons and should not be construed as conferring rights or granting permissions.

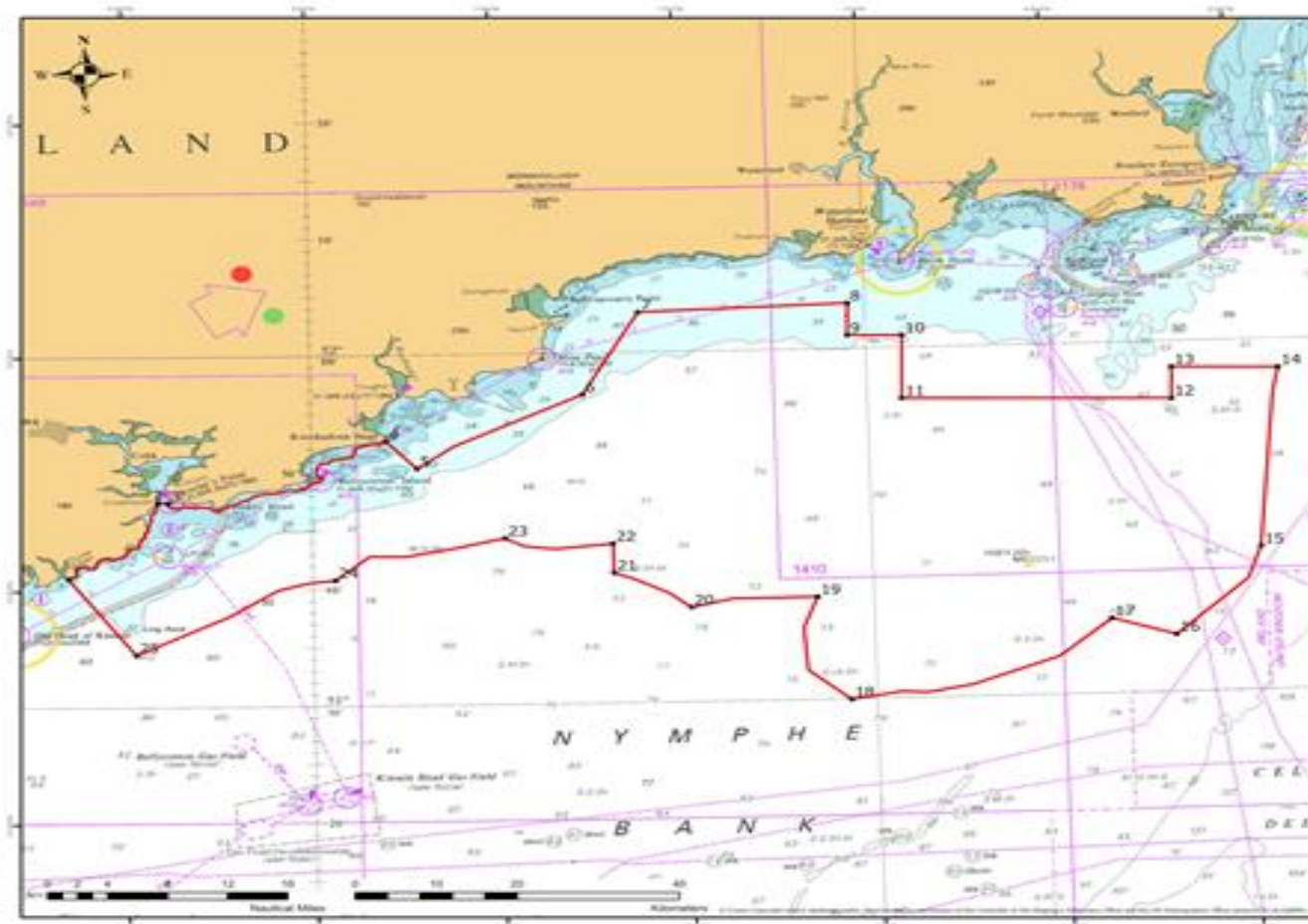
Irish Maritime Administration,
Department of Transport,
Leeson Lane, Dublin 2, D02 TR60, Ireland.

12/06/2024

Encl: Appendix: Overview of 2024 ORE survey area

For any technical assistance in relation to this Marine Notice, please contact:
The Marine Survey Office, email: MSO@transport.gov.ie.
For general enquiries, please contact the Maritime Safety Policy Division, email:
MaritimeSafetyPolicyDivision@transport.gov.ie.
Written enquiries concerning Marine Notices should be addressed to:
Dept. of Transport, Maritime Safety Policy Division, Leeson Lane, Dublin 2, D02 TR60, Ireland.
email: MarineNotices@transport.gov.ie or visit us at: www.gov.ie/transport.

Appendix: Overview of 2024 ORE survey area



Proposed Survey Area

▭ Survey Area
• Vertices

Number	Lat (WGS84)	Long (WGS84)
1	51° 41.084' N	008° 28.231' W
2	51° 47.521' N	008° 36.528' W
3	51° 47.521' N	008° 35.413' W
4	51° 42.683' N	008° 31.953' W
5	51° 30.248' N	008° 48.682' W
6	51° 36.412' N	008° 30.089' W
7	51° 03.452' N	008° 24.407' W
8	51° 03.900' N	008° 03.833' W
9	51° 03.130' N	007° 01.950' W
10	51° 03.048' N	008° 36.070' W
11	51° 03.603' N	008° 36.118' W
12	51° 05.189' N	008° 27.036' W
13	51° 17.767' N	008° 27.186' W
14	51° 07.037' N	008° 05.892' W
15	51° 42.247' N	008° 08.413' W
16	51° 24.886' N	008° 27.839' W
17	51° 36.303' N	008° 34.685' W
18	51° 25.952' N	007° 02.804' W
19	51° 38.788' N	007° 06.071' W
20	51° 38.900' N	007° 09.607' W
21	51° 41.149' N	007° 27.730' W
22	51° 43.688' N	007° 27.013' W
23	51° 44.244' N	007° 28.175' W
24	51° 40.790' N	007° 07.620' W
25	51° 34.518' N	008° 05.013' W

An Bóinn Comhandaíl,
 An tAidís agus Comairleáil
 Department of the Environment,
 Climate and Communications