



Marine Notice No. 33 of 2024

Notice to all Shipowners, Fishing Vessel Owners, Agents, Shipmasters, Skippers, Fishers, Yachtsmen and Seafarers

Geotechnical and Geophysical Surveys Irish Sea

1. Notice of Activity

The Department of Transport has been advised that geotechnical and geophysical surveys will be undertaken in the Irish Sea on behalf of McMahon Design and Management (MDM). The survey work is anticipated to start on **1 June 2024** and be completed by **1 September 2024**, subject to weather and operational constraints.

2. Location of Activity

The geotechnical and geophysical surveys will involve the deployment of towed equipment from a survey vessel. The surveys will follow three cable routes with start and end point locations listed in table below. Appendices 1, 2 and 3 show the complete route position lists for the three survey routes. A map of the operations area is available in Appendix 4 to this Marine Notice.

Table: Start and end points for the survey corridor routes.

Cable Route	Starting Point		Ending Point	
	Latitude	Longitude	Latitude	Longitude
Survey Route 1	53° 25'50.7658" N	6° 07'24.4518" W	53° 18'05.2905" N	3° 35' 41.2785" W
Survey Route 2	53° 21'01.2000" N	6° 11' 19.9917" W	53° 16'39.1380" N	4° 36'56.6125" W
Survey Route 3	52° 10'32.5772" N	6° 35'42.8043" W	51° 51'11.4683" N	5° 07'23.3771" W

3. Details of the Survey Vessel

The survey works will be conducted by the vessel “**Glomar Vantage**” (Call Sign: **HO3057**), which will display the relevant lights and shapes. As the survey vessel will be restricted in its ability to manoeuvre when surveying, other vessels are kindly requested to keep a wide berth and navigate the area with caution. Mariners are advised to keep continuous watch on VHF radio channel 16 when navigating the area.

4. Contact Details

Enquiries regarding the contents of this Marine Notice, or any other relevant matters, should be directed to Seagard Limited who are providing Marine and Fisheries Liaison Services for the project:

- Aaron Mair – Seagard Limited
Tel: +44 (0) 7468 457 030
Email: a.mair@seagard.org

All mariners are reminded of their responsibilities under the International Collision Regulations and of [Marine Notice No. 17 of 2007](#), which gives general advice in relation to the activities of vessels engaged in survey work for hydrographic, seismic, fishing research and underwater operations.

The International Regulations for Prevention of Collisions at Sea (COLREGS) are implemented in Irish law by the *Merchant Shipping (Collision Regulations) (Ships and Water Craft on the Water) Order 2012* [S.I. No. 507 of 2012] and the *Signals of Distress (Ships) Rules 2012* [S.I. No.170 of 2012]. [See Marine Notice No. 06 of 2013](#). These Statutory Instruments may be purchased by mail order from Government Publications, Office of Public Works, Mountshannon Road, Dublin, D08 XA06 Tel: (046) 9423100. They are also available online at: www.irishstatutebook.ie.

Note: Marine Notices are issued purely for maritime safety and navigation reasons and should not be construed as conferring rights or granting permissions.

Irish Maritime Administration,
Department of Transport,
Leeson Lane, Dublin 2, D02 TR60, Ireland.

24/05/2024

Encl: Appendix 1: Survey Route 1 Coordinates
Appendix 2: Survey Route 2 Coordinates
Appendix 3: Survey Route 3 Coordinates
Appendix 4: Map of subsea survey routes in the Irish Sea

For any technical assistance in relation to this Marine Notice, please contact:

The Marine Survey Office, email: MSO@transport.gov.ie.

For general enquiries, please contact the Maritime Safety Policy Division, email:

MaritimeSafetyPolicyDivision@transport.gov.ie.

Written enquiries concerning Marine Notices should be addressed to:

Dept. of Transport, Maritime Safety Policy Division, Leeson Lane, Dublin 2, D02 TR60, Ireland.

email: MarineNotices@transport.gov.ie or visit us at: www.gov.ie/transport.

Appendix 1: Survey Route 1 Coordinates

Latitude	Longitude
53° 25' 50.7658" N	6° 07' 24.4518" W
53° 26' 09.3830" N	6° 04' 27.5477" W
53° 27' 38.6287" N	5° 57' 35.8848" W
53° 27' 41.5173" N	5° 56' 50.8560" W
53° 27' 13.5814" N	5° 55' 34.3815" W
53° 27' 18.6482" N	5° 55' 04.7017" W
53° 28' 51.3673" N	5° 52' 35.1815" W
53° 29' 10.2908" N	5° 52' 35.0593" W
53° 29' 25.6205" N	5° 52' 25.3810" W
53° 30' 06.9728" N	5° 50' 30.5937" W
53° 30' 55.7677" N	5° 45' 51.1125" W
53° 31' 55.5145" N	5° 39' 54.9852" W
53° 32' 58.2157" N	5° 31' 40.4634" W
53° 32' 49.8549" N	5° 20' 24.0455" W
53° 33' 00.3324" N	5° 18' 26.9375" W
53° 32' 40.0926" N	5° 17' 00.1146" W
53° 32' 27.7162" N	5° 08' 24.2180" W
53° 34' 46.7266" N	5° 03' 52.7180" W
53° 35' 26.4719" N	5° 00' 16.4482" W
53° 35' 24.7123" N	4° 50' 03.8749" W
53° 35' 32.1557" N	4° 45' 38.5226" W
53° 32' 40.0926" N	5° 17' 00.1146" W
53° 32' 27.7162" N	5° 08' 24.2180" W
53° 31' 12.3638" N	5° 02' 00.4371" W
53° 34' 55.0999" N	4° 54' 33.4692" W
53° 34' 53.6935" N	4° 48' 56.4628" W
53° 35' 31.5754" N	4° 44' 58.5545" W
53° 35' 14.4792" N	4° 28' 04.3365" W
53° 33' 29.5436" N	4° 17' 44.6297" W
53° 27' 51.0209" N	3° 59' 40.2504" W
53° 24' 34.2366" N	3° 44' 15.1824" W
53° 23' 33.7693" N	3° 42' 27.0701" W
53° 22' 01.6826" N	3° 41' 52.3895" W
53° 18' 20.0298" N	3° 36' 40.5937" W
53° 18' 05.2905" N	3° 35' 41.2785" W

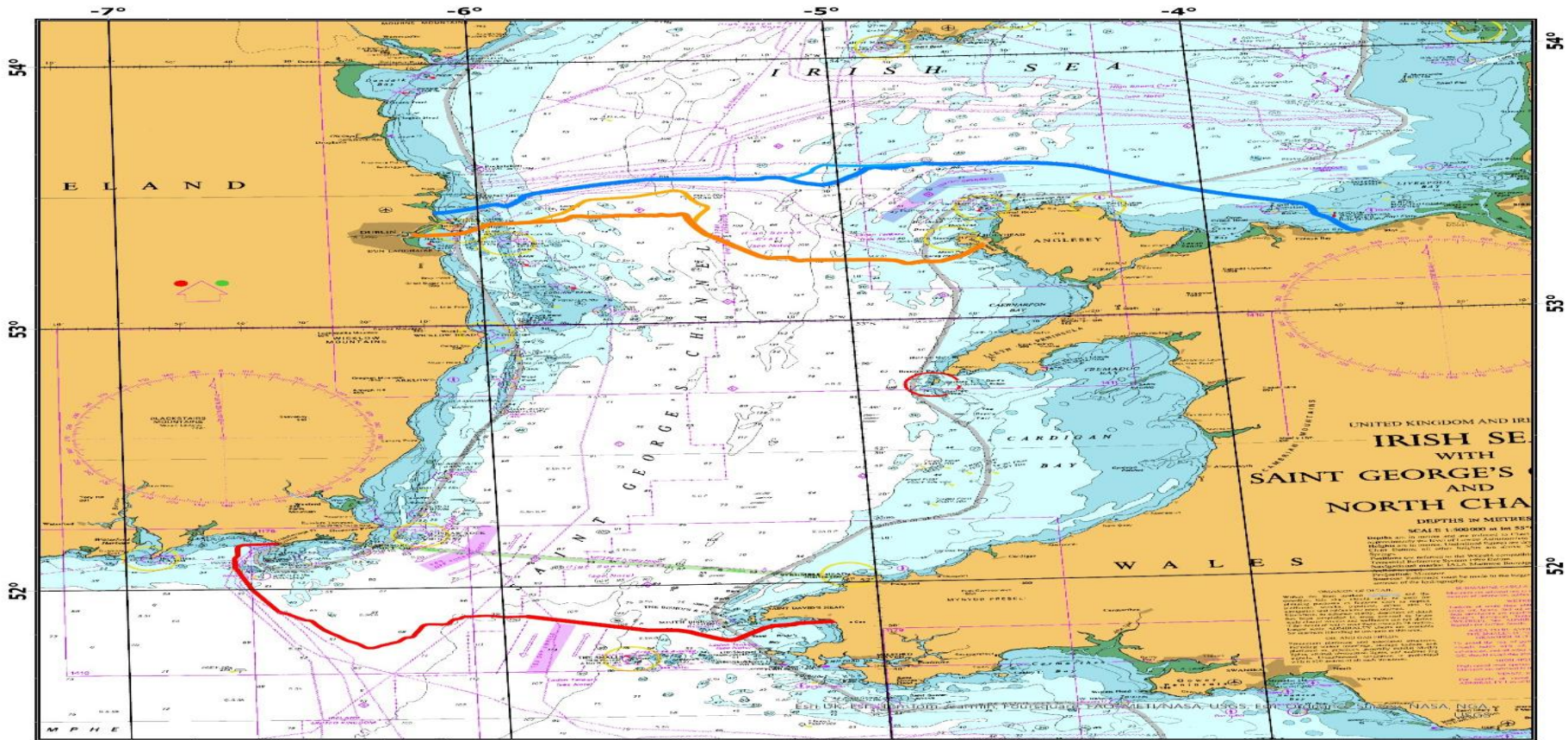
Appendix 2: Survey Route 2 coordinates








Latitude	Longitude
53° 21' 01.2000" N	6° 11' 19.9917" W
53° 20' 45.0303" N	6° 08' 55.8730" W
53° 21' 12.8074" N	6° 02' 43.8566" W
53° 21' 35.7005" N	6° 01' 47.5492" W
53° 23' 17.7645" N	5° 57' 59.4049" W
53° 23' 57.0793" N	5° 45' 48.6441" W
53° 24' 46.8421" N	5° 44' 27.3741" W
53° 24' 48.9122" N	5° 37' 12.1971" W
53° 24' 43.9902" N	5° 31' 13.1444" W
53° 24' 55.9081" N	5° 26' 13.5091" W
53° 24' 41.6804" N	5° 25' 43.6916" W
53° 22' 39.3184" N	5° 24' 44.9017" W
53° 21' 49.1821" N	5° 24' 10.1512" W
53° 20' 32.8925" N	5° 22' 59.0694" W
53° 18' 38.1156" N	5° 19' 59.9749" W
53° 23' 30.7660" N	5° 51' 52.6961" W
53° 25' 31.8434" N	5° 46' 00.2712" W
53° 28' 31.6543" N	5° 41' 18.6360" W
53° 29' 00.2362" N	5° 34' 18.6525" W
53° 30' 23.7835" N	5° 27' 24.5767" W
53° 30' 09.0192" N	5° 26' 10.9771" W
53° 26' 40.6582" N	5° 22' 10.3121" W
53° 26' 09.5281" N	5° 22' 00.0038" W
53° 22' 39.3184" N	5° 24' 44.9017" W
53° 18' 38.1156" N	5° 19' 59.9748" W
53° 14' 31.3687" N	5° 12' 49.3531" W
53° 14' 29.0128" N	5° 08' 50.8560" W
53° 13' 56.2144" N	5° 08' 27.7664" W
53° 13' 56.3223" N	5° 06' 31.7037" W
53° 13' 44.4638" N	4° 54' 08.4413" W
53° 12' 47.4622" N	4° 50' 19.9758" W
53° 13' 08.9756" N	4° 47' 38.0068" W
53° 13' 05.1814" N	4° 44' 28.5940" W
53° 14' 22.6226" N	4° 40' 49.3476" W
53° 16' 34.5726" N	4° 37' 19.3798" W
53° 16' 39.1380" N	4° 36' 56.6125" W

Appendix 3: Survey Route 3 coordinates

Latitude	Longitude
52° 10' 32.5772" N	6° 35' 42.8043" W
52° 10' 05.1221" N	6° 41' 39.6052" W
52° 07' 56.7580" N	6° 42' 04.6304" W
52° 06' 12.8856" N	6° 42' 32.7321" W
52° 04' 59.5380" N	6° 42' 35.5115" W
52° 03' 29.0658" N	6° 41' 45.2816" W
51° 54' 09.8328" N	6° 34' 08.3354" W
51° 52' 41.7488" N	6° 30' 42.7589" W
51° 46' 32.9662" N	6° 22' 21.0047" W
51° 46' 38.4479" N	6° 20' 28.0104" W
51° 48' 40.4461" N	6° 15' 55.8969" W
51° 49' 00.5601" N	6° 14' 37.6877" W
51° 51' 40.5770" N	6° 12' 21.7575" W
51° 51' 46.2184" N	6° 09' 04.1516" W
51° 52' 52.2306" N	6° 07' 38.0181" W
51° 53' 21.0921" N	6° 06' 24.5772" W
51° 53' 30.4642" N	6° 03' 51.4799" W
51° 53' 11.8396" N	6° 00' 00.0000" W
51° 51' 11.4683" N	5° 07' 23.3771" W
51° 50' 49.6468" N	5° 13' 02.4633" W
51° 49' 55.3392" N	5° 18' 29.7538" W
51° 47' 16.1408" N	5° 23' 38.1501" W
51° 47' 14.2424" N	5° 24' 48.1147" W
51° 49' 13.2344" N	5° 30' 31.4634" W
51° 49' 43.5717" N	5° 37' 13.3253" W
51° 51' 49.0715" N	5° 48' 31.3368" W
51° 53' 16.3948" N	5° 56' 23.7488" W
51° 53' 09.9563" N	5° 59' 29.1606" W
51° 53' 11.8396" N	6° 00' 00.0000" W

Appendix 4: Map of subsea survey routes in the Irish Sea



 <p>NOT SAFE FOR NAVIGATION</p>	 	<p>Legend</p> <ul style="list-style-type: none">  Survey Route 1  Survey Route 2  Survey Route 3 	 <p>United Kingdom and Ireland IRISH SEA WITH SAINT GEORGE'S AND NORTH CHANNEL</p> <p>DEPTHIS IN METRES SCALE 1:100000 at 50°</p> <p>Esri UK, Esri, TomTom, Garmin, FAO, NOAA, USGS, Eirik NAV45E</p>
---	--	---	--