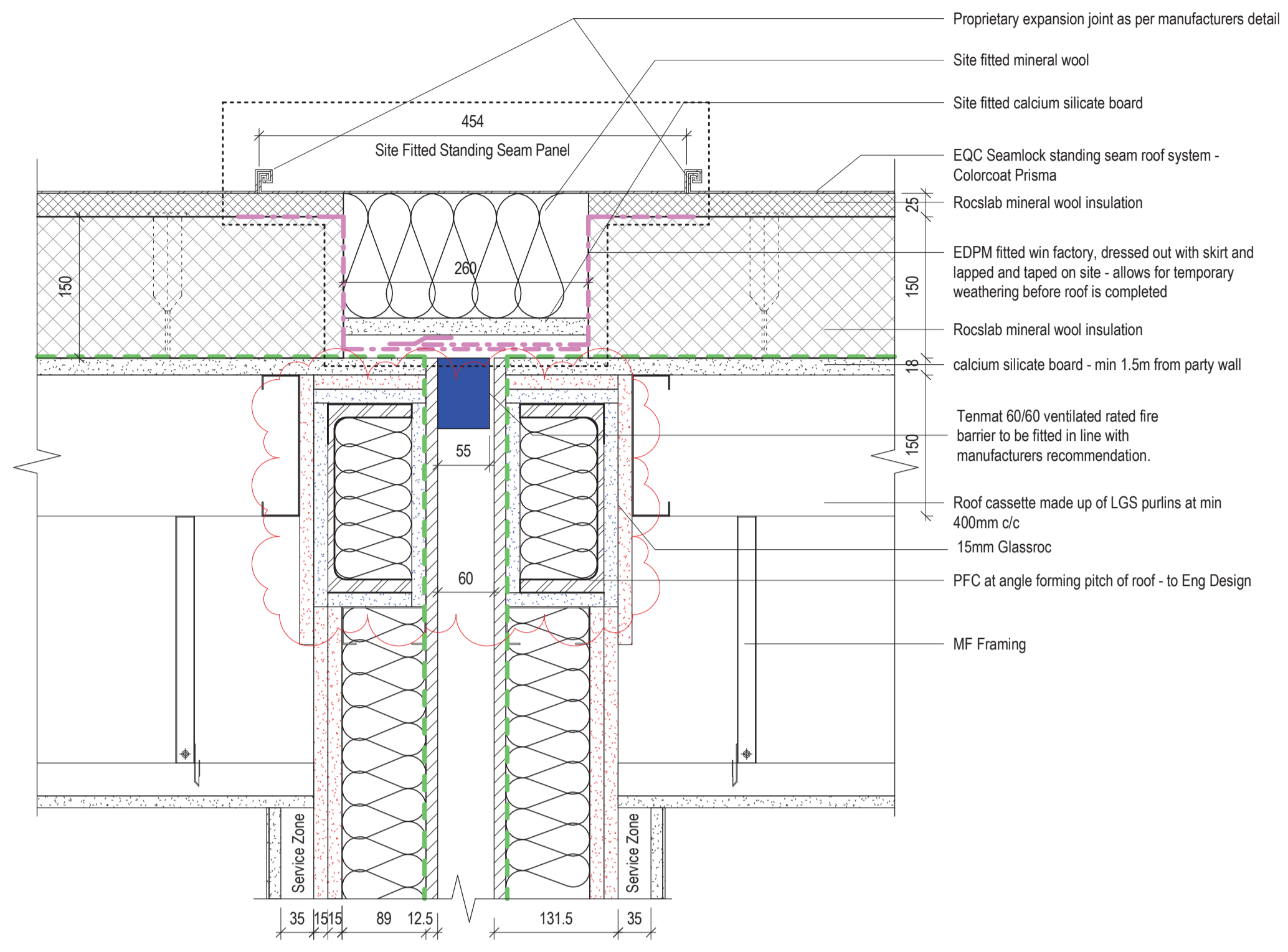
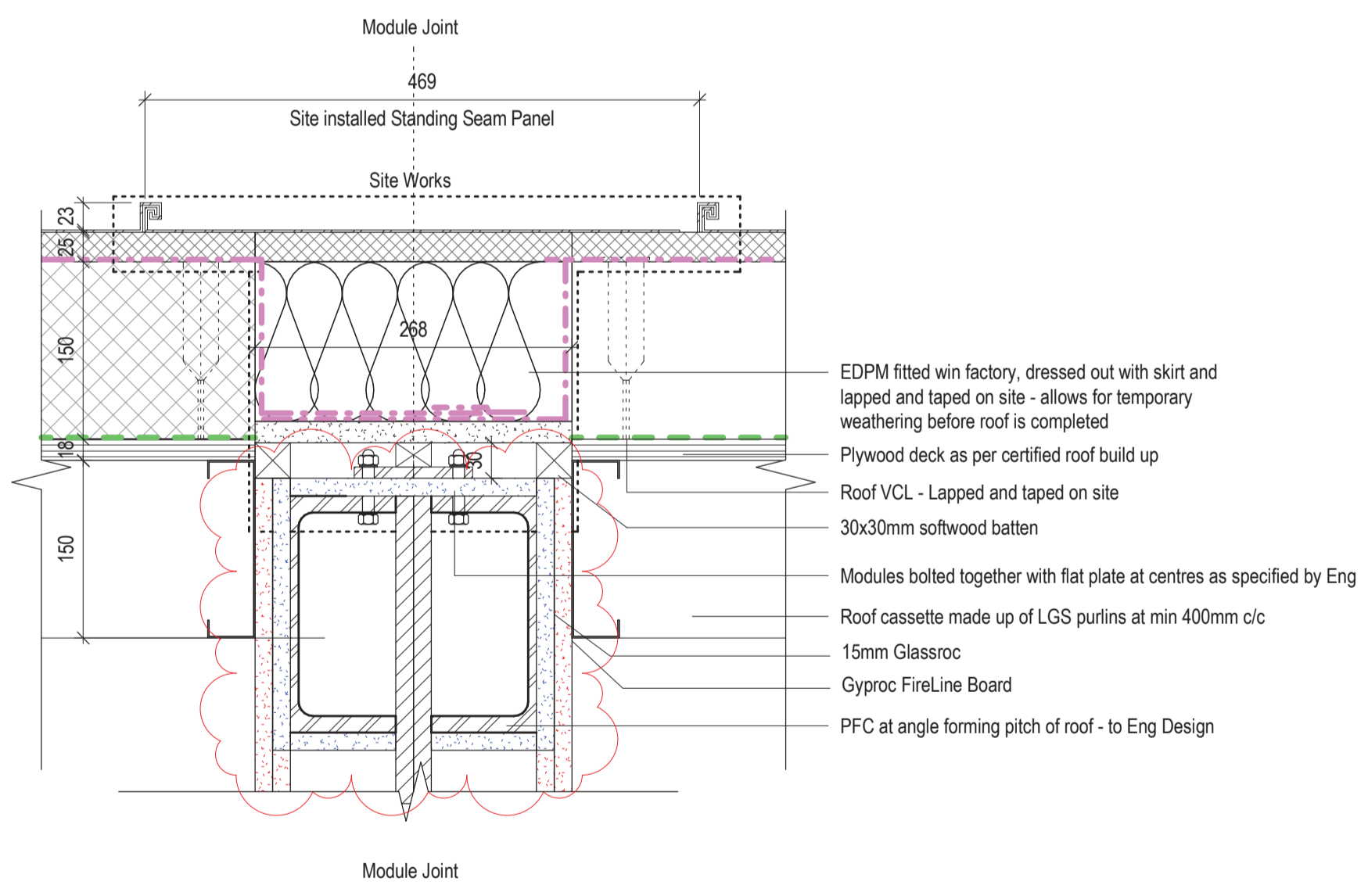


1 Section Detail- Roof Junction-Barge  
1:5



2 Section Detail- Roof Junction-Party Wall  
1:5



3 Section Detail- Roof Junction-Module to Module  
1:5

Notes:  
Do not scale from this drawing.  
Use figured dimensions only.  
All errors and omissions to be reported to the Architect.  
This drawing to be read in conjunction with relevant consultant's drawings.  
All dimensions are in millimetres and all levels are in meters to match Datums unless otherwise noted.  
Contractor Design Responsibility  
It is noted that there are many elements within the works that require contractor design, and will be subject to certification as part of BCAR - see Preliminary Inspection Plan for clarity on certification required.  
© This drawing or design may not be reproduced without permission.

Revisions:

1	Issued for Information	24-04-2023	SC
2	Issued for Tender	28-04-2023	SC
3	Issued for Tender	22-05-2023	SC

Rev Description Date By

Project:  
**OPW Ukrainian Housing - Two Storey Modular Unit**

Client:  
**SISK**

Title:  
**Roof - Section Details**

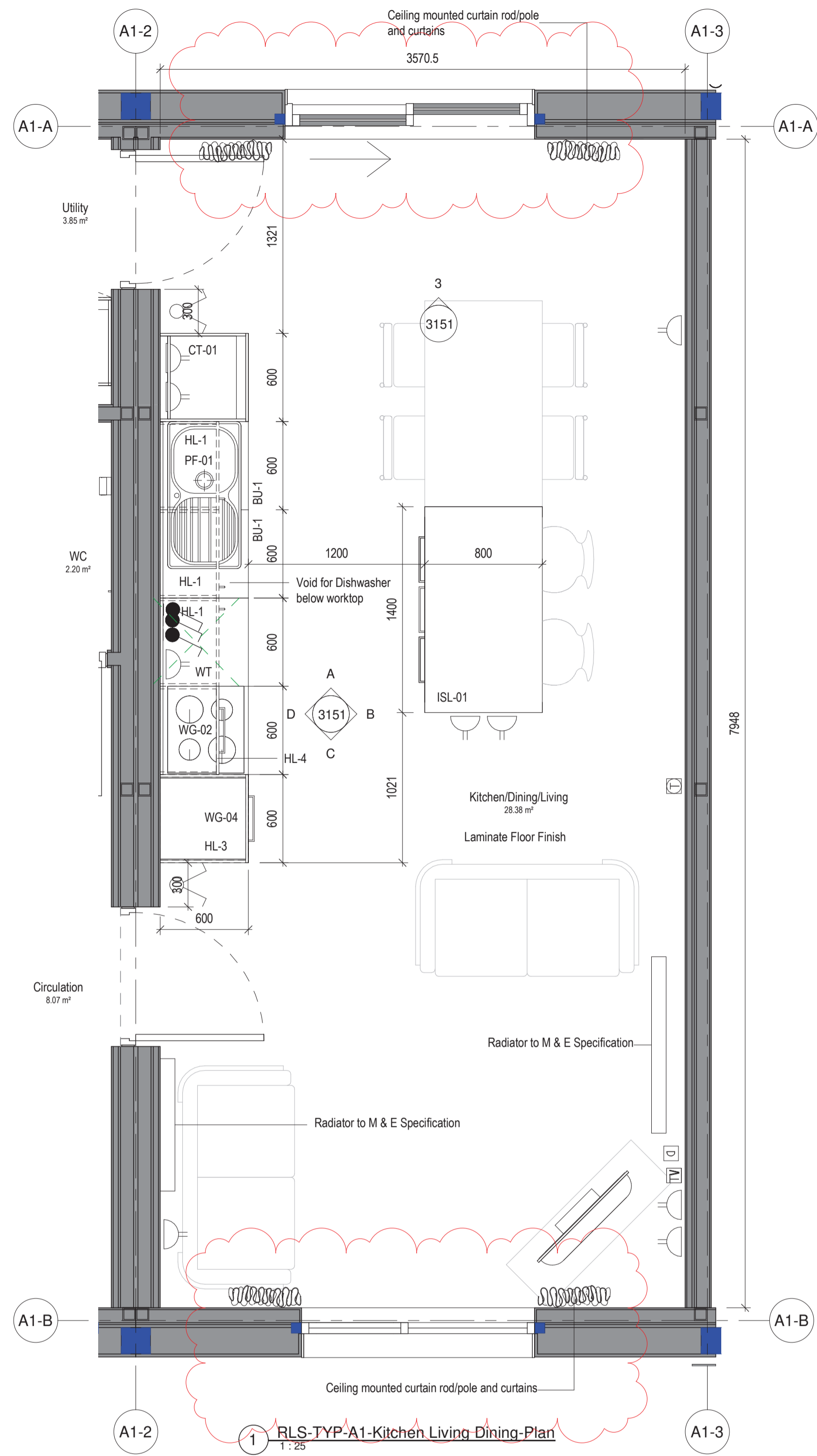
Drawing / Document Name:  
Project Number Project Originator Volume Level Type Rate Sheet Number  
**2783JRMH-COA-00-ZZ-DR-A-5251**

Suitability Status : Code - Description Revision:  
**D2 - For Tender P- 3**

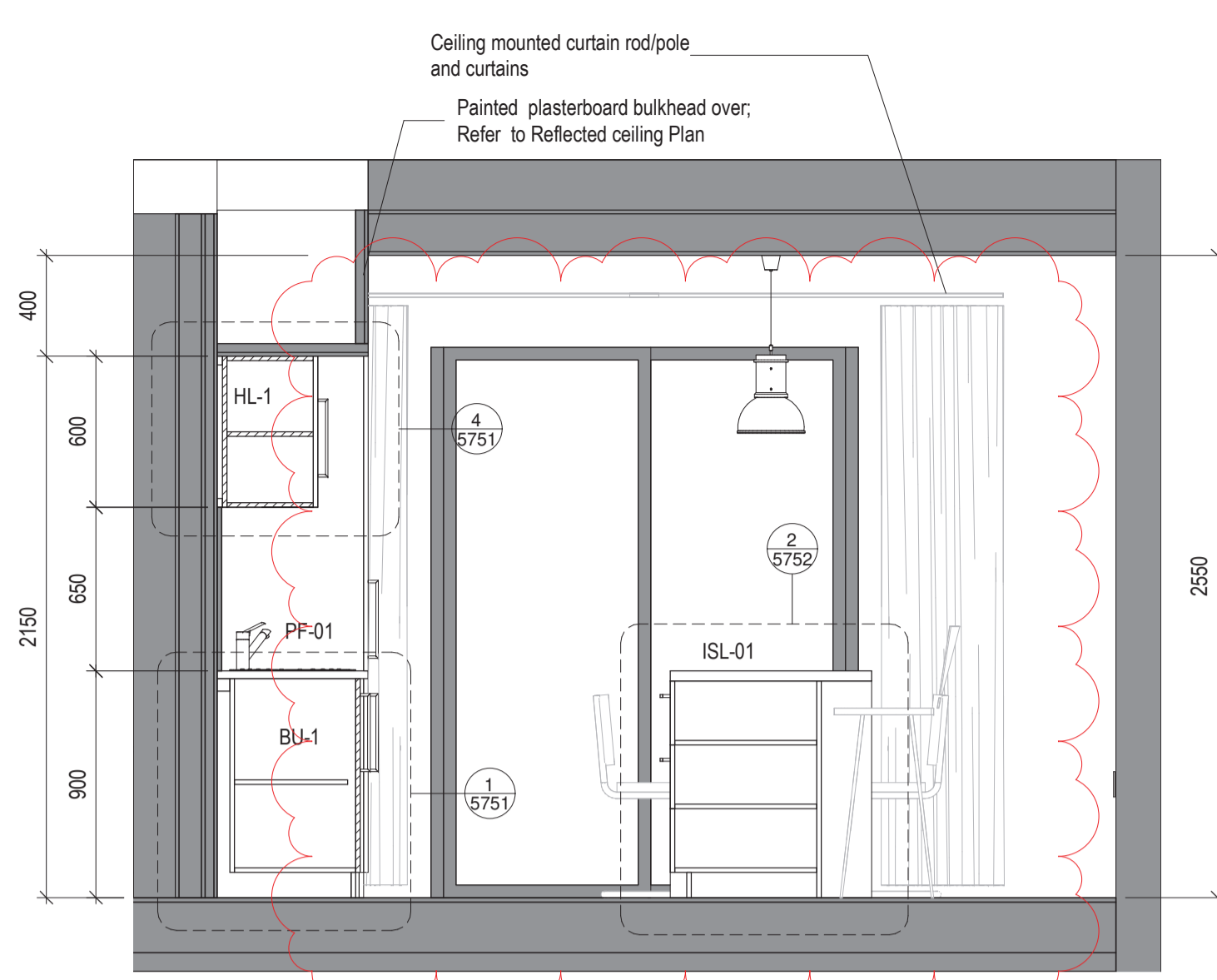
Scale @ A1 Drawn: Checked: Date:  
1 : 5 Steve Burke Steve Burke 21-04-2023

**COADY**  
ARCHITECTS

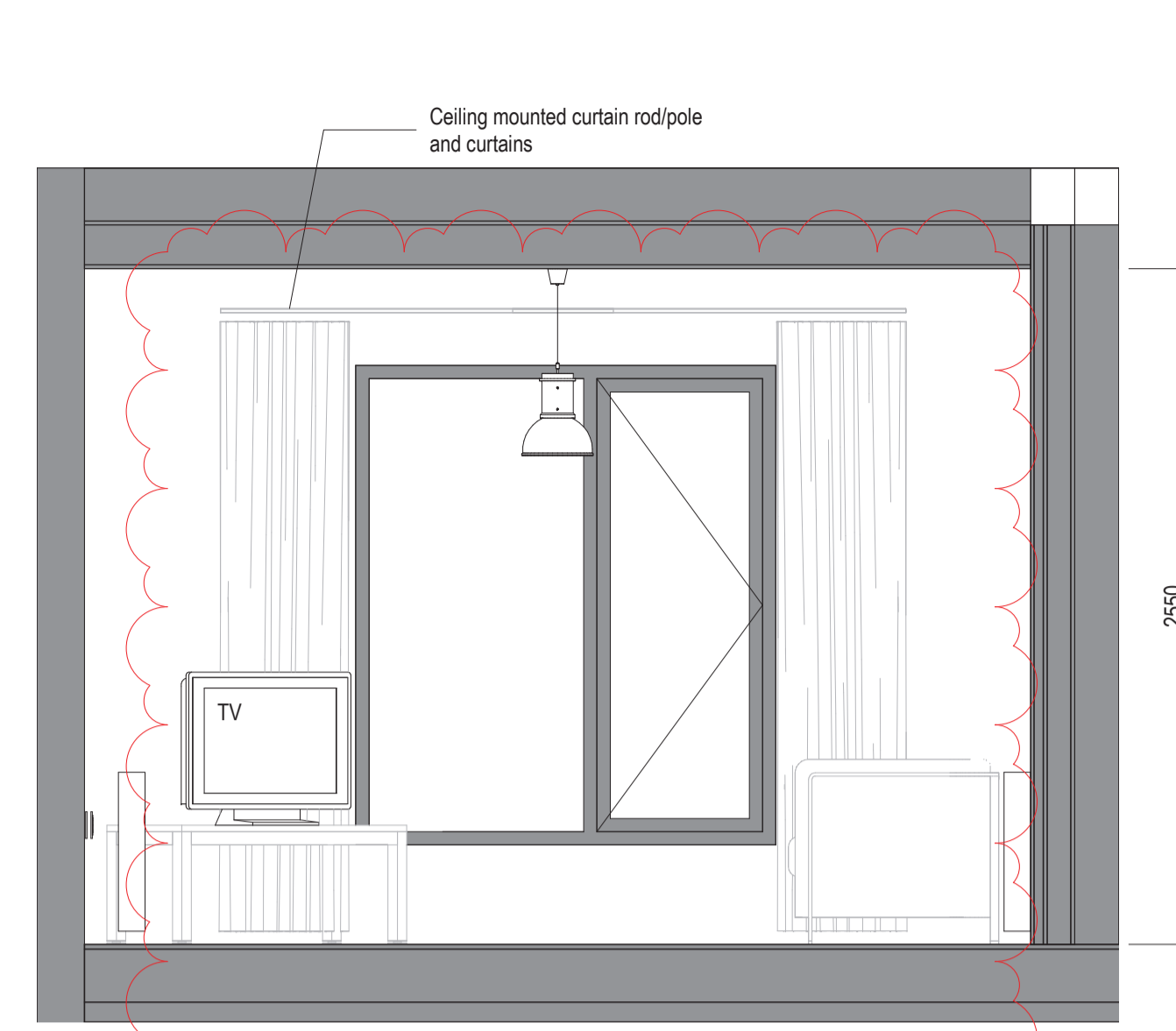
Mt Pleasant Business Ctr, Ranelagh, Dublin 6, D06 X7P8  
Unit 8A Oram Point, Main St, Crammore, Co. Galway  
01 407 6786 | 091 788 325 | admin@coady.ie | www.coady.ie



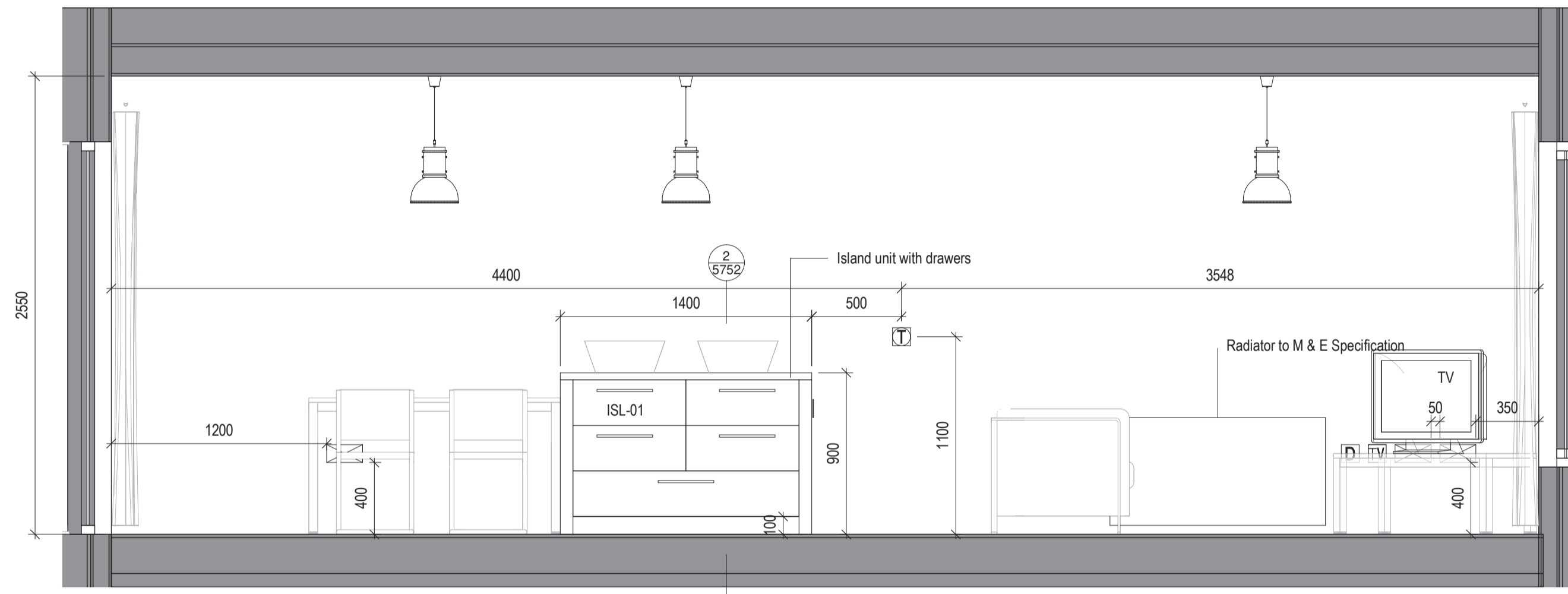
1 RLS-TYP-A1-Kitchen Living Dining-Plan  
1:25



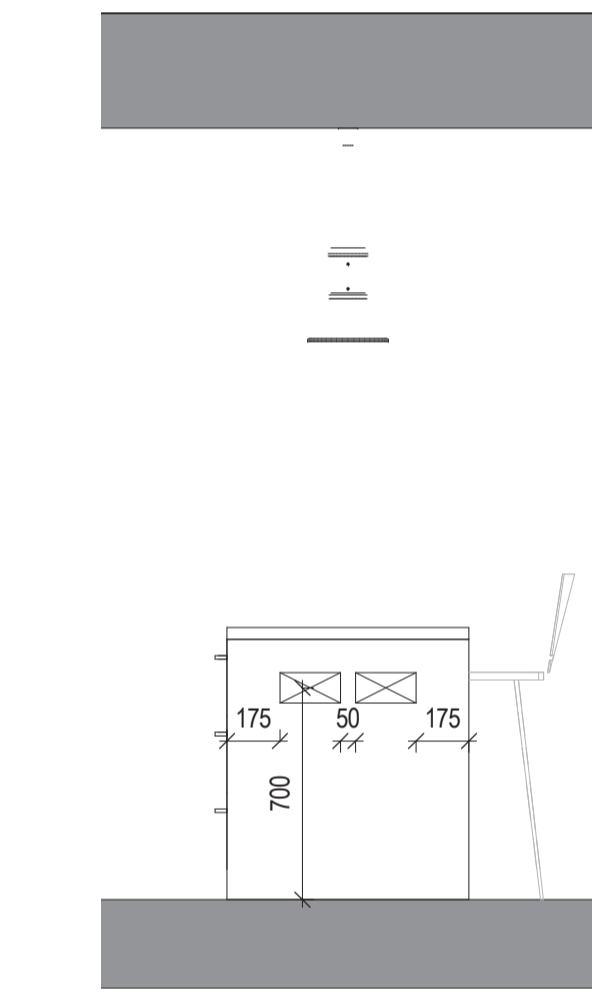
A RLS-TYP-A1-Kitchen Living Dining - ELEV A  
1:25



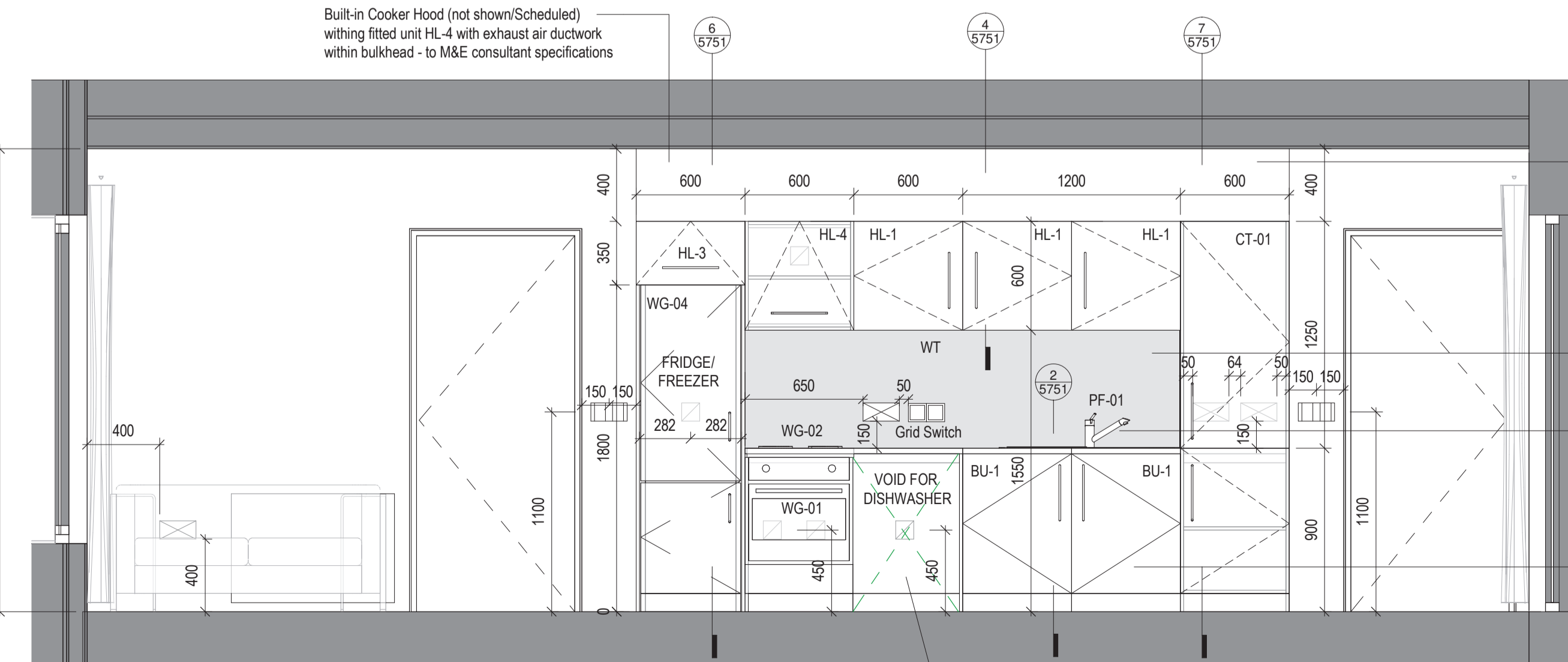
C RLS-TYP-A1-Kitchen Living Dining - ELEV C  
1:25



B RLS-TYP-A1-Kitchen Living Dining - ELEV B  
1:25

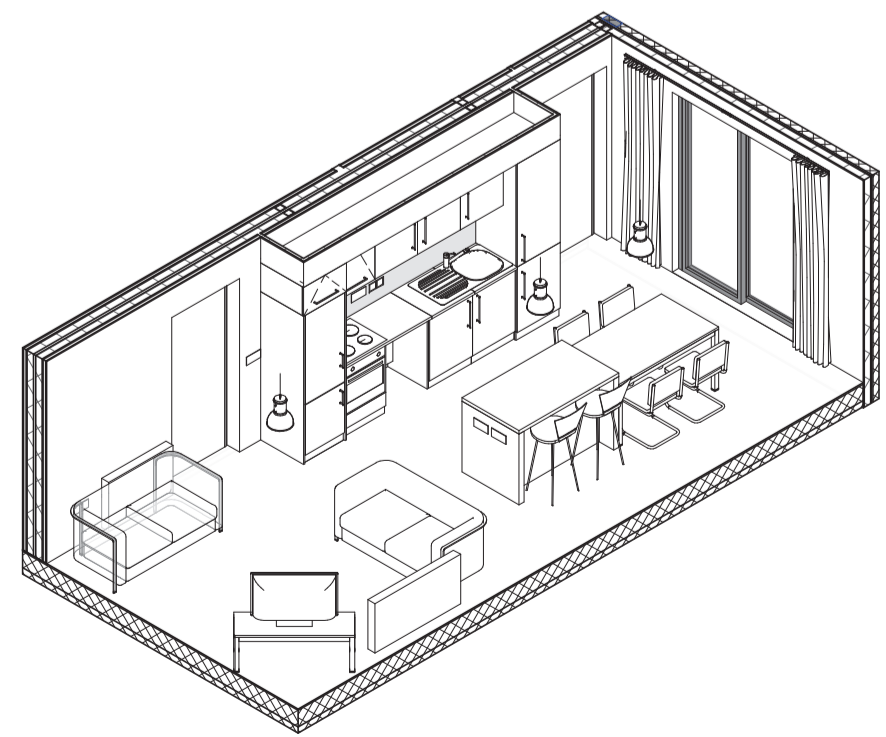


3 RLS-TYP-A1-Kitchen Living Dining - ELEV E  
1:25



D RLS-TYP-A1-Kitchen Living Dining - ELEV D  
1:25

NOTE:  
Kitchen to be plumbed for dishwasher only -  
Dishwasher to be tenant supply



2 RLS-TYP-A1-Kitchen Living Dining-3D  
1:25

2783-Casework-Schedule\_Kitchen\_Living\_Dining

Ref:	Description	Qty:
BU-1	Base unit - 600mm D x 900mm high - length as required	2
CT-01	Tall Storage Unit - 600mm D x 215mm H consisting of High and Low Level storage with adjustable shelves and doors	1
HL-1	High level storage cabinets - 600Wx400Dx600H - Side Hung	3
HL-3	High level press - 600Wx600Dx350H - Top Hung; with gable ends below either side of fridge/freezer void	1
HL-4	High level press - 600Wx400Dx600H - Top hung for Extractor Fan	1
ISL-01	Island Unit - 800x1400mm x 900mm H - comprising drawers	1
WT	Worktop - 600mm D x 900mm H	1

Notes:  
Do not scale from this drawing.  
Use figured dimensions only.  
All errors and omissions to be reported to the Architect.  
This drawing to be read in conjunction with relevant consultant's drawings.  
All dimensions are in millimetres and all levels are in meters to match Datums unless otherwise noted.

Contractor Design Responsibility  
It is noted that there are many elements within the works that require contractor design, and will be subject to certification as part of BCAR - see Preliminary Inspection Plan for clarity on certification required.

© This drawing or design may not be reproduced without permission.

Legend:

	Plan	Elevation
Light Switch		
Single Switched Socket Outlet		
Twin Switched Socket Outlet		
Telephone Point		
Cleaners Socket Outlet		
Public Speakers Address		
Dado Trunking		
Network Point		
Sub Distribution Board (Possible Location)		
Single Phase Isolator		
Three Phase Isolator		
Electric Emergency Knockout Point		
Key Operating Isolating Switch-ICT Installation Only		
Key Operating Isolator / Knockout Button-Elec. Supply		
Gas Pressure Proving System (With Key Switch)		
Gas Emergency Knockout Point		
Projector Audio Faceplate		
Data Projector Isolator Switch		
Thermostat Control		
Isolation Switch		
Gas Alarm Slam Shut		
Fire Alarm Break Glass		
Cooker Point 45A		
Exit Sign - Positioned 2.4m AFFL		
PA Console		
Security Alarm Panel / Panic Button		
Fire Alarm Panel		
Mechanical Ventilation Power Point		

NOTE:  
Loose furniture shown as indicative only;  
All loose furniture to be procured by Client.

Revisions:

Rev	Description	Date	By
1	Issued for Tender	28-04-2023	SC
2	Issued for Tender	08-05-2023	SC
3	Issued for Tender	12-05-2023	SC

Project:  
OPW Ukrainian Housing - Two Storey Modular Unit

Client:  
SISK

Title:  
RLS\_Type A1\_Kitchen Living Dining

Drawing / Document Name:  
Project Number Project Originator Volume Level Type Rate Sheet Number  
2783JRMH-COA-00-ZZ-DR-A-3151

Suitability Status : Code - Description  
D2 - For Tender Revision: P-3

Scale @ A1 Drawn: Checked: Date:  
As indicated Lee-Ann Ford Steve Burke 25-04-2023

COADY ARCHITECTS  
Mt Pleasant Business Ctr, Ranelagh, Dublin 6, D06 X7P8  
Unit 8A Cran Point, Main St, Crummore, Co. Galway  
01 407 6786 | 091 788 325 | admin@coady.ie | www.coady.ie