



VERMILION
ENERGY



Corrib Field

P3 hydraulic fluid loss permanent repair

Method Statement

Revision 02

March 2019

Confidential



Contents

1 Scope and method of works..... 3

Rev 02: Update to campaign dates

1 Scope and method of works

Overview of Activities	<p>Work will include:</p> <ul style="list-style-type: none"> - Opening of P3 Wellhead Protection Structure cover. - Inspection of P3 tree. - Removal of existing bridging plate and Lock Out Tool (LOT). - Installation of replacement bridging plate and hydraulic override tool on the AMV actuator. - Closing of P3 Wellhead Protection Structure cover. - Vessel operates to the Vessel Code of Conduct.
Location	<ul style="list-style-type: none"> - Corrib Field – P3 Wellhead/Protection Structure (Lat/Long: 54° 20' 51.418"N / 11° 02' 15.465"W - See Fig. 1) - Distance of vessel activity from West Connacht Coast SAC approx. 65 kms
Timescale¹	<ul style="list-style-type: none"> - The above works are anticipated to be carried out between July and September 2019¹ for circa 2 days.
Technique	<ul style="list-style-type: none"> - As-found Inspection of P3 Wellhead Protection Structure - Open cover of P3 Protection Structure to permit ROV access to tree - As-found inspection of P3 Production Tree - ROV to remove the temporary Lock Out Tool that was previously installed on the AMV actuator - ROV to remove existing bridging plate on P3 tree - Vessel to deploy new bridging plate / hydraulic override tool - ROV to insall the new bridging plate to the tree then install the hydraulic override tool to the AMV actuator - ROV observation of tree during testing of tree valve functioning (from BBGT control room). - As-Left inspection of P3 Production Tree. - Close cover of P3 Protection Structure. - As-left inspection of P3 Wellhead Protection Structure.
Equipment	<ul style="list-style-type: none"> - ROV Support Vessel - Workclass ROVs c/w TCU (tooling deployment unit) and torque tooling - Replacement Hydraulic Bridging Plate & Valve Override Tool. - Water Jet (on WROV) - NOTE : No planned use of acoustic survey equipment
Restrictions	<ul style="list-style-type: none"> - Sea conditions (e.g. wave height and period, wind speed)

¹ timescale estimates are subject to regulatory approvals and suitable weather and sea state conditions



	<ul style="list-style-type: none"> - Fishing activities will be restricted in the vicinity of the Corrib Field during ROVSV activities - Observe Vessel Code of Conduct
Environmental Impact	<ul style="list-style-type: none"> - Potential impact on marine mammals from the presence of vessel/ROV operations. Behavioural avoidance responses might occur close to the works (within 200m), but are unlikely at distances greater than 200m. - There is a risk of minor leaks of oil/diesel from equipment on the vessel deck during the course of the work.
Mitigation	<ul style="list-style-type: none"> - There is no planned use of acoustic survey equipment. Noise will be limited to vessel operations only. - No requirements for refuelling of any deck equipment. - Maintenance, audits and inspection plans are in place to mitigate the risk of potential oil leaks at an early stage. - In the event of an oil/diesel spill from equipment on the vessel deck during the course of the work, oil spill equipment will be provided on board operating vessels.
Reinstatement	<ul style="list-style-type: none"> - Not applicable
Contingency	<ul style="list-style-type: none"> - Shipboard Oil Pollution Emergency Response Plan will be implemented in the event of a spill.

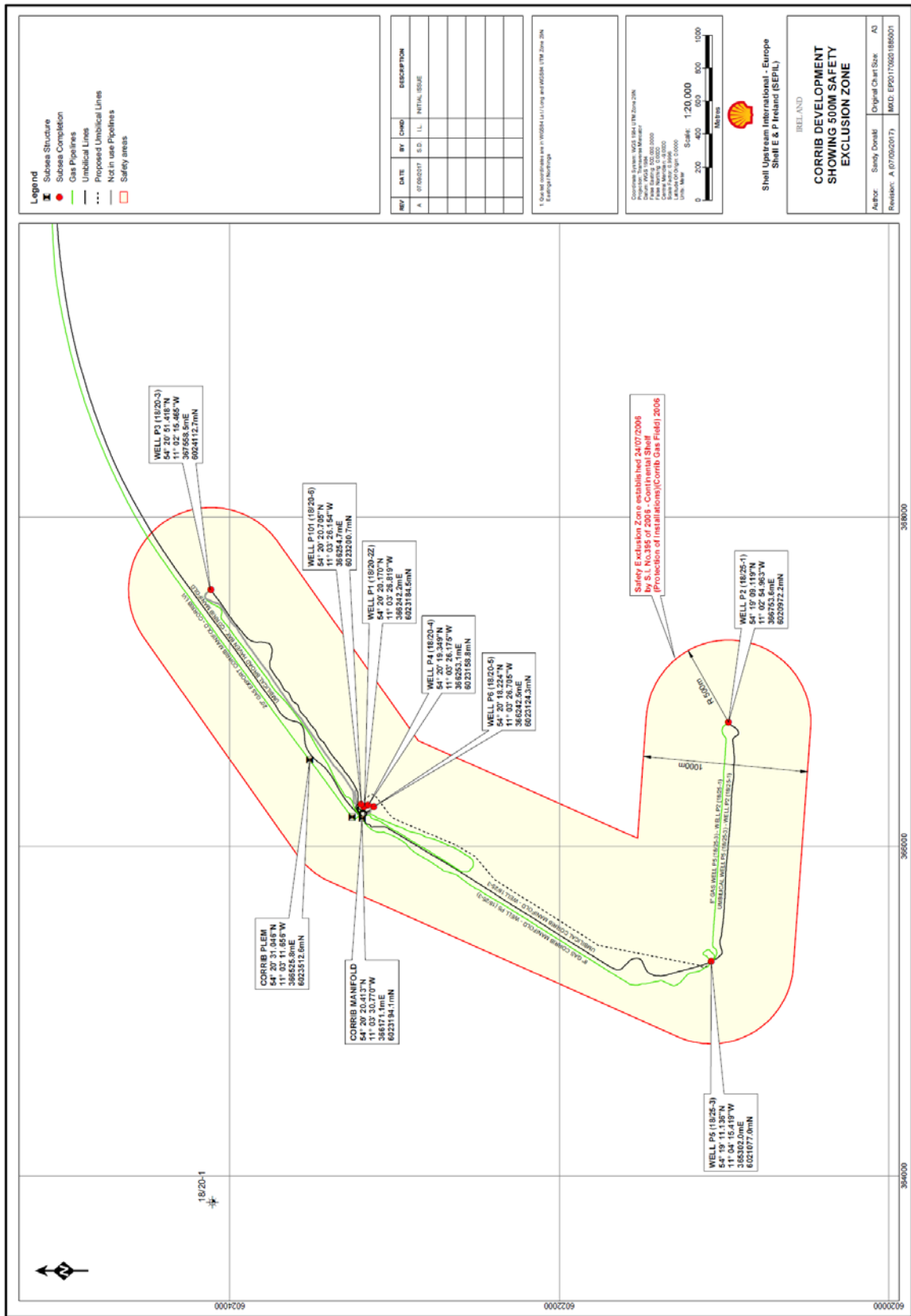


Fig 1. Corrib Field Layout

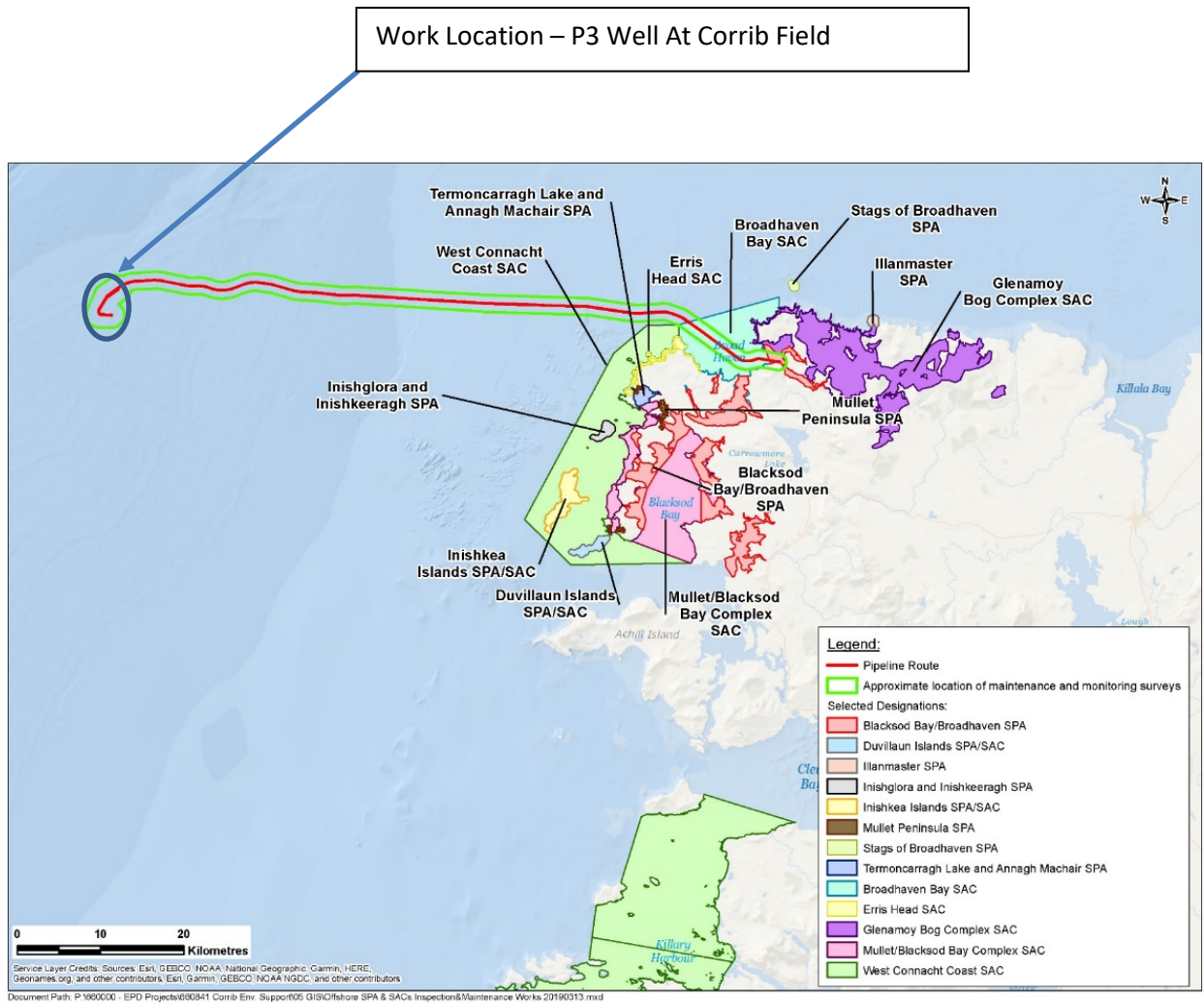


Fig 2. Location of works with respect to Special Areas of Conservation (SAC) and Special Protection Areas (SPA's)