

2003



Statistical Information on
Social Welfare Services

Staitisticí um Sheirbhísí Leasa
Shóisialaigh

Department of Social & Family Affairs



2003

Statistical Information on Social Welfare Services

Staitisticí um Sheirbhísí Leasa Shóisialaigh



BAILE ÁTHA CLIATH
ARNA FHOILSIÚ AG OIFIG AN tSOLÁTHAIR
Le ceannach díreach ón
Oifig Dhíolta Foilseacháin Rialtas,
TEACH SUN ALLIANCE, SRÁID THEACH LAIGHEAN, BAILE ÁTHA CLIATH 2,
nó tríd an bpost ó
FOILSEACHÁN RIALTAS, AN RANNÓG POST-TRÁCHTA,
51 FAICHE STIABHNA, BAILE ÁTHA CLIATH 2.
(Teil: 01 647 6843)
nó trí aon díoltáir leabhar.

Dublin
PUBLISHED BY THE STATIONERY OFFICE
To be purchased directly from the
GOVERNMENT PUBLICATIONS SALES OFFICE,
SUN ALLIANCE HOUSE, MOLESWORTH STREET, DUBLIN 2,
or by mail order from
GOVERNMENT PUBLICATIONS, POSTAL TRADE SECTION, 51 ST. STEPHEN'S GREEN, DUBLIN 2.
(Tel: 647 6843)
or through any bookseller.

€10

© GOVERNMENT OF IRELAND 2004

(Prn. 3020)

Notes

Data relating to Recipients and Beneficiaries, unless otherwise stated, refer to the numbers on the 31st December each year. See introduction for further details.

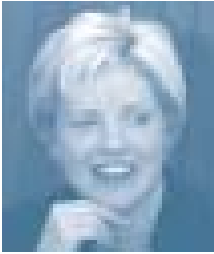
ABBREVIATIONS

- Not Applicable

n.a. Not Available

Contents

1.	Foreword from the Minister	iv
2.	Brollach ón Aire	v
3.	Réamhrá	vi
4.	Introduction	viii
5.	List of tables	x
6.	List of graphs	xviii
7.	Section A: summary and financial	1
8.	Section B: old age	23
9.	Section C: widows, widowers and one-parent families	29
10.	Section D: child related payments	37
11.	Section E: illness, disability and caring	45
12.	Section F: unemployment supports	57
13.	Section G: employment supports	69
14.	Section H: supplementary welfare allowance section	77
15.	Section J: miscellaneous payments and grants	91
16.	Appendix 1	98
17.	Appendix 2	99
18.	Appendix 3	100
19.	Index	101



Foreword from the Minister

The availability of reliable data is an important tool in the development and implementation of policies to build social inclusion and progress social cohesion. Accurate information is vital to support evidence-based policy-making and enable the measurement of progress in these areas.

For this reason, I welcome the publication of this, the 21st edition of the Statistical Report of the Department of Social and Family Affairs. The report outlines the key statistics from the range of the Department's social welfare supports in 2003 and points to trends within these schemes for the last 10 years which serve to inform policy decisions.

Expenditure on social welfare increased to €10.5 billion in 2003 - an increase of 10.3% over the previous year. This represents the Governments' real commitment to caring and supporting those less well off in our society. This level of investment reflects my desire to achieve real social progress and which, allied with a will to reform where necessary, displays how our social protection system is now framed to step up to the challenges facing those who are vulnerable and others in our changing society.

The main features of my Department's activities in 2003 were

- Social Welfare Expenditure in 2003 was €10.5 billion which represented 28.9% of Gross Current Government Expenditure.
- Over 959,000 people were in receipt of a weekly Social Welfare payment, which was paid in respect of over 1.5 million beneficiaries.
- 534,009 families received a monthly Child Benefit payment which was paid in respect of 1,034,851 children. Expenditure on Child Benefit increased by 13.9% to nearly €1.7 billion.
- Expenditure on Old Age has increased by 8.9% to €2.5 billion. The number of recipients in this group has increased by 10,774 to 298,169.
- Expenditure on Carer's Allowance and Carer's Benefit increased by 14.5% and 19.6% respectively. The numbers in receipt of a Carer's payment increased by 4.5% to 21,955.
- Back to School Clothing and Footwear allowances were paid in respect of 172,123 children, an increase of 16,312 on 2002. Expenditure rose by 16.3% to over €17.7 million.

This report illustrates my ongoing commitment to securing real social welfare improvements for my Department's customers. I am committed to safeguarding the living standards of those who rely on social welfare income and other supports and to prioritising the allocation of resources in favour of those most in need.

Finally, I would like to express my appreciation to the staff throughout the Department for their continuing efforts in implementing the Government's programme of social welfare protection.

Mary Coughlan TD
Minister for Social and Family Affairs



Brollach ón Aire

Tá sé ríthábhachtach go mbeadh sonraí iontaofa ar fáil chun polasaithe a fhorbairt agus a fheidhmiú chun cur le huilechuimsitheacht shóisialta agus chun comhtháiteacht shóisialta a chur chun cinn. Tá eolas beacht fíorthábhachtach chun tacú le déanamh polasaí fianaise-bhunaithe agus chun cur ar ár gcumas dul chun cinn sna réimsí seo a mheas.

Dá bharr sin, fáiltím roimh an bhfoilseachán seo, an 21ú eagrán de Thuarascáil Staitistiúil na Roinne Gnóthaí Sóisialacha agus Teaghlaigh. Leagtar na príomhstaitisticí a bhaineann le tacaíochtaí leasa shóisialaigh na Roinne i 2003 amach sa tuarascáil agus tugtar chun solais ann na treochtaí laistigh de na scéimeanna seo le 10 mbliana anuas a chuireann cinntí polasaí ar an eolas.

D'ardaigh caiteachas ar leas sóisialach go €10.5 billiún i 2003 – ardú 10.3% ar an mbliain roimhe sin. Léiríonn sé sin tiomantas an Rialtais i leith cúram agus tacaíocht a thabhairt dóibh siúd inár sochaí nach bhfuil chomh maith sin as. Léiríonn an leibhéal seo d'infheistíocht gur mian liom dul chun cinn sóisialta a bhaint amach, agus go bhfuil an toil ann athchóiriú a chur i bhfeidhm nuair is gá, léiríonn sé an chaoi a bhfuil ár gcóras cosanta sóisialta leagtha amach chun aghaidh a thabhairt ar dhúshlán atá os a gcomhair siúd atá leochaileach i sochaí atá ag athrú.

Ba iad príomhghnéithe ghníomhaíochtaí mo Roinne i 2003

- B'ionann Caiteachas Leasa Shóisialaigh i 2003 agus €10.5 billiún, sin 28.9% den Ollchaiteachas Reatha Rialtais.
- Fuair breis is 959,000 duine íocaíocht Leasa Shóisialaigh sheachtainiúil, a íocadh maidir le breis is 1.5 milliún tairbhí.
- Fuair 534,009 teaghlach íocaíocht Sochar Linbh mhíosúil a íocadh maidir le 1,034,851 leanbh. Tháinig ardú de 13.9% ar chaiteachas ar Shochar Linbh go beagnach €1.7 billiún.
- Tá ardú 8.9% tagtha ar chaiteachas ar Dhaoine Scothaosta go €2.5 billiún. Tháinig ardú ar an faighteoirí sa ghrúpa seo de 10,774 go 298,169.
- Tháinig ardú de 14.5% agus 19.6% ar chaiteachas ar Liúntas Cúramóra agus ar Shochar Cúramóra faoi seach. Tháinig ardú de 4.5% go 21,955 ar líon na ndaoine a fuair íocaíocht Chúramóra.
- Íocadh liúntais Éadaí agus Bróg Chun Dul ar Scoil maidir le 172,123 leanbh, ardú 16,312 ó 2002. Tháinig ardú de 16.3% ar chaiteachas go dtí breis is €17.7 milliún.

Léiríonn an tuarascáil seo mo thiomantas leanúnach chun feabhsúcháin Leasa Shóisialaigh a bhaint amach do chustaiméirí mo Roinne. Táim tiomanta do chaighdeán mhaireachtála na ndaoine a bhíonn ag brath ar ioncam leasa shóisialaigh agus ar thacaíochtaí eile a chosaint agus do thosaíocht a thabhairt do dháileadh acmhainní ina bhfábhar siúd is measa as.

Ar deireadh, ba mhian liom mo bhuíochas a chur in iúl don fhoireann ar fud na Roinne as a n-iarrachtaí leanúnacha clár cosanta leasa shóisialaigh an Rialtais a chur i bhfeidhm.

Máire Ní Chochláin, TD

An tAire Gnóthaí Sóisialacha agus Teaghlaigh

Réamhrá

Cúrsaí Ginearálta

Is é seo an *fichiú* a haon don bhfoilsíúcháin bliantúil 'Eolas Staitistiúil ar Sheirbhísí Leasa Shóisialaigh' a ullmhaíonn An Roinn Gnóthaí Sóisialacha agus Teaghlaigh. Leagann sé amach sonraí cuimsitheach maidir leis na seirbhísí atá curtha ar fáil ag an Roinn.

Baineann na staitistic san eagra seo le 2003 agus níos luaithe. Maidir leis na sonraí i leith na n-daoine atá ag fáil íocaíochtaí no íocaíochtaí ar a son is iad na figiúirí ar 31 Nollaig gach bliain atá luaite, ach amháin nuair a deirtear a mhalairt. Tá a lan de na táblaí a leiríonn miondealaithe i leith daoine ag fáil íocaíochtaí, no íocaíochtaí ar a son, de réir treith áirithe mar an meid deithiúnaithe, nó aois luaithe mar 'measta'. Ciallaíonn sé seo gur bunaíodh na miondealaithe, ata measaithe a bheith údarásach, ar dháta seachas 31 Nollaig ach gar don dáta sin.

Is figiúirí sealadach iad na figiúirí caiteachas le haghaidh 2002 go dtí go mbeidh siad deimhnithe ag An Ard-Reachtair Cuntas agus Ciste. Ta na figiúirí caiteachas ar fad athruithe go suimeanna Euro.

Foinse na Sonraí

Is í An Roinn Gnóthaí Sóisialacha, Pobail agus Teaghlaigh foinse na staitistic atá leirithe, ach amháin nuair a deirtear a mhalairt.

vi

Amsraith agus Athraithe ar Íocaíochtaí

Tugtar sonraí ar amshraith nuair atá siad ar fáil. I gcásanna áirithe, áfach, cuireann íocaíochtaí nua, m. sh. Liuntas Cúnamh Feirme, nó athraithe ar íocaíochtaí, isteach ar chomparáid idir blianta. Tá fonóta leis na tablaí cuí nuair is gá.

Miondealú De Réir Ranna

Tá an eolai roinnte i naoi gcuid mar leanas:

- Cuid A** Coimriú agus Airgeadais
- Cuid B** Seanaois
- Cuid C** Baintreacha Fir & Mná agus Teaghlaigh le Tuismitheoir Amháin
- Cuid D** Íocaíochtaí a bhaineann le Páistí
- Cuid E** Tinneas, Míchumas agus Cúram
- Cuid F** Tacaíochtaí Dífhostaíochta
- Cuid G** Tacaíochtaí Fostaíochta
- Cuid H** Liúntas Leasa Forlíontach
- Cuid J** Íocaíochtaí Ilghnéitheach agus Deontais

Tá na h-íocaíochtaí i ngach earnáil leagtha amach in Aguisín 2 (leath. XX)

Tugann **Cuid A** sonraí maidir le caiteachas, le faighteoirí íocaíochtaí seachtainiúil leasa shóisialaigh, le daoine inárachais agus le rátaí íocaíochtaí.

Tugann **Cuid B** eolas maidir le caiteachas agus faighteoirí íocaíochtaí a bhaineann le seanaois.

Tugann **Cuid C** eolas maidir le caiteachas ar agus faighteoirí íocaíochtaí do bhaintreacha fir agus mná agus teaghlaigh le tuismitheoir amháin. Tá roinnt staitistic maidir le h-íocaíochtaí do mhná chéile tréigthe agus do mhná chéile príosúnaigh san áireamh sa chuid seo freisin.

Tugann **Cuid D** eolas maidir le caiteachas ar agus faighteoirí íocaíochtaí a bhaineann le páistí, Sochar Leanaí, Pinsean Dílleachta agus Sochar Maithreachais san áireamh.

Tugann **Cuid E** eolas maidir le caiteachas ar agus faighteoirí Sochar Míchumais, Pinsean Easláinte, Liúntas Míchumais, Pinsean na nDall, Liúntas Cúraim agus Sochair Gortú Ceirde.

Tugann **Cuid F** eolas maidir le h-íocaíochtaí a bhaineann le dífhostaíocht.

Tugann **Cuid G** eolas maidir le tacaíochtaí fostaíochta, an Liuntas Filleadh ar Obair, Liuntas Fiontar Filleadh ar Obair, Forlíonadh d'Ioncam Teaghlaigh agus Liuntas Cunamh Feirme san áireamh.

Tugann **Cuid H** eolas maidir leis na h-íocaíochtaí eagsula a chuirtear ar fail faoin Scéim Liúntas Leasa Forlíontach.

Tugann **Cuid J** eolas maidir le Sochar Coireála, Saorscéimeanna agus íocaíochtaí ilgnéitheach eile.

Achomair

Tá achomair de Staitistic Gnóthaí Sóisialacha agus Teaghlaigh i bhfoirm Bileog foilsithe leis an tuairisc seo. Tá achomhair dos na sonraí caiteachas agus uimhreacha faighteoirí chomh maith leis na bun rátaí leasa shóisialaigh i bhfeidhm ó Eanáir 2003, ar fáil sa bhileog seo.

Beidh fáilte roimh tuairimí leitheoirí maidir leis an tuairisc seo. Ba cheart iad a sheoladh chuig:

Rannóg Staitistic,
An Roinn Gnóthaí Sóisialacha
agus Teaghlaigh,
Urlár 5,
Áras Mhic Dhiarmada,
Sráid Stórais,
Baile Átha Cliath 1

Tel: 01-7043834 Faics: 01-7043765

Tá an Tuairisc seo ar fáil freisin ar an idir-líne ag www.welfare.ie

Foilsíonn an Roinn Gnóthaí Pobail agus Teaghlaigh Tuairisc Bliantúil a thugann sonraí ar an dul chun cinn atá déanta sa bhliain atá i gceist. Is tuairisc í chuig an Aire agus an Rialtas ar dul chun cinn maidir le cur i bhfeidhm Ráiteas Straitéiseach na Roinne. Chomh maith le sin tugann an 'Treoirleabhar ar Sheirbhísí Leasa Shóisialaigh' eolas cuimsitheach ar na seirbhísí leasa shóisialaigh ar fad agus tá sé seo ar fáil ó aon oifig den Roinn agus ar an idir-líne.

Introduction

General

This is the twenty first issue of the annual “Statistical Information on Social Welfare Services” prepared by the Department of Social, Community and Family Affairs. It sets out comprehensive data relating to services provided by the Department.

The statistics set out in this report relate to 2003 and earlier years. In the case of data relating to recipients and beneficiaries, the figures, unless otherwise stated, refer to the 31st December each year. Several tables, which provide a breakdown of recipients or beneficiaries by some characteristic such as number of dependants or age, are referred to as “estimated”. This means that the proportionate breakdown, which is considered to be a reliable estimate, was established at a date other than, but close to, 31st December.

Expenditure figures for 2003 are provisional pending certification by the Comptroller and Auditor General. All Expenditure figures have been converted to Euro amounts.

Source of Data

The source for the statistics presented, unless otherwise stated, is the Department of Social and Family Affairs.

Time Series and Changes to Existing Payments

Time Series data are given, where available. However, the introduction of new payments and changes to existing payments affect the comparability of different years’ figures in some instances. Relevant tables are footnoted where appropriate.

Breakdown by Section

The report is divided into nine sections as follows:

Section A	Summary and Financial
Section B	Old Age
Section C	Widows, Widowers and One-Parent Families
Section D	Child Related Payments
Section E	Illness, Disability and Caring
Section F	Unemployment Supports
Section G	Employment Supports
Section H	Supplementary Welfare Allowance
Section J	Miscellaneous Payments and Grants

Appendix 2 (page xx) lists the payments covered by each category.

Section A provides details of expenditure, recipients of weekly Social Welfare Payments, insured persons and rates of payment.

Section B provides details of expenditure and recipients of payments relating to old age.

Section C provides details of expenditure and recipients of payments to widows, widowers and one parent families. It also includes some statistics on payment to deserted wives and prisoners' wives.

Section D provides details of expenditure and recipients of child related payments including Child Benefit, Orphan's Pensions and Maternity Benefit.

Section E provides details of expenditure and recipients of Disability Benefit, Invalidity Pension, Disability Allowance, Blind Person's Pension, Carers Allowance and Occupational Injury Benefits.

Section F provides details of unemployment payments.

Section G provides details of employment supports including Back to Work Allowance, Back to Work Enterprise Allowance, Back to Education Allowance, Family Income Supplement and Farm Assist.

Section H provides details of the range of payments available under the Supplementary Welfare Allowance scheme.

Section J provides details of Treatment Benefits, Household Benefits and Free Travel and other miscellaneous payments.

Summary

A Social and Family Affairs Leaflet to complement this report has been published. It contains, in summary form, details of expenditure and recipient numbers along with the social welfare payment rates applicable from January 2003,

Readers views and comments on this report are welcome and should be addressed to :-

Statistics Unit,
Department of Social and Family Affairs,
Floor 5,
Aras Mhic Dhiarmada,
Store Street,
Dublin 1.

Tel: 01-7043834 Fax: 01-7043765

This Report is also available on the Internet at www.welfare.ie

The Department of Social and Family Affairs also publishes an Annual Report which provides details of all major developments during the year in question. The Report is a progress report to the Minister and the Government on the implementation of the Department's Strategy Statement. In addition, the "Guide to Social Welfare Services" provides comprehensive information on all social welfare services and is available directly from any office of the Department and on the Internet.

List of Tables

Section A: Summary and Financial		Page
Table A1	Expenditure on Social Welfare by Programme, 2002 and 2003	3
Table A2	Expenditure on Social Welfare as a Percentage of Current Government Expenditure, GNP and GDP, 1994 to 2003	3
Table A3	Expenditure on Social Welfare by Payment Type, 2002 and 2003	4
Table A4	Additional Expenditure Details, 2002 and 2003	5
Table A5	Social Insurance and Social Assistance Expenditure by Scheme, 2002 and 2003	6
Table A6	Financing of Social Welfare Expenditure, 2002 and 2003	8
Table A7	Financing of the Social Insurance Fund, 2002 and 2003	8
Table A8	Number of Recipients and Beneficiaries of Weekly Social Welfare Payments, 1994 to 2003	9
Table A9	Number of Recipients of Weekly Social Welfare Payments by Payment Type and Programme, 2002 and 2003	10
Table A10	Number of Recipients of Weekly Social Welfare Payments by Payment Type and Insurance or Assistance, 2002 and 2003	11
Table A11	Number of Beneficiaries of Weekly Social Welfare Payments by Payment Type and Programme, 2002 and 2003	13
Table A12	Number of Beneficiaries of Weekly Social Welfare Payments by Payment Type and Insurance or Assistance, 2002 and 2003	14
Table A13	Number of Recipients of Weekly Social Welfare Payments by Sex, Payment Type and Insurance or Assistance, 2003	15
Table A14	Number of Recipients, Qualified Adults and Qualified Children of Weekly Social Welfare Payments, 2003	16
Table A15	Number of Persons in each Social Insurance Class, 2001 (Short tax year) and 2002	17
Table A16	Number of Insured Persons, 1994/1995 to 2002	18
Table A17	Social Welfare Weekly Rates of Payment from January 2003	19
Table A18	Social Welfare Weekly Rates of Payment from January 2004	20
Table A19	Index of Short-Term Rates of Payment, Consumer Price Index and Average Industrial Earnings, 1994 to 2003	21
Table A20	Index of Long-Term Rates of Payment, Consumer Price Index and Average Industrial Earnings, 1994 to 2003	21
Table A21	Index of Rates of Payment for the Long-Term Unemployed, Consumer Price Index and Average Industrial Earnings, 1994 to 2003	22

Section B: Old Age		Page
Table B1	Expenditure on Old Age by Payment Type, 2002 and 2003	25
Table B2	Expenditure on Old Age by Pension Type, 1994 to 2003	25
Table B3	Number of Recipients by Type of Old Age Pension, 1994 to 2003	26
Table B4	Number of Recipients of Old Age Pensions by Type of Pension and Number of Qualified Adults and Children, 2003	26
Table B5	Number of Recipients of Old Age Pensions by Type of Pension, Age and Sex, 2003 (Estimated)	27
Table B6	Number of Recipients of Pre-Retirement Allowance by Age and Sex, 2003 (Estimated)	27
Table B7	Number of Recipients of Living Alone Allowance, Over 80 Allowance and Island Allowance by Pension Type, 2003 (Estimated)	27
Table B8	Number of Recipients of Old Age Pensions by Type of Pension and County, 2003 (Estimated)	28

Section C: Widows, Widowers And One-Parent Families		Page
Table C1	Expenditure on Widows, Widowers and One-Parent Families by Payment Type, 2002 and 2003	31
Table C2	Expenditure on Widow/er's Pensions, 1994 to 2003	31
Table C3	Expenditure on Deserted Wife's Benefit, Deserted Wife's Allowance, Prisoners Wife's Allowance and Lone Parent's Allowance/One-Parent Family Payment, 1994 to 2003	32
Table C4	Number of Recipients of Widow/er's Pensions, 1994 to 2003	32
Table C5	Number of Recipients of Widow/er's (Contributory) Pension and Deserted Wife's Benefit by Number of Qualified Children, 2003	33
Table C6	Number of Recipients of Widow/er's Pensions by Age and Sex, 2003 (Estimated)	33
Table C7	Number of Recipients of Deserted Wife's Benefit, Deserted Wife's Allowance, Prisoner's Wife's Allowance and Lone Parent's Allowance/One-Parent Family Payment, 1994 to 2003	34
Table C8	Number of Recipients of Deserted Wife's Benefit, Deserted Wife's Allowance and Prisoner's Wife's Allowance by Age, 2003 (Estimated)	34
Table C9	Number of Recipients of One-Parent Family Payment by Status of Parent and Number of Qualified Children, 2002 (Estimated)	35
Table C10	Number of Recipients of One-Parent Family Payment by Status of Parent, Age and Sex, 2003 (Estimated)	35
Table C11	Number of Recipients of Widow/er's Pensions, Deserted Wife's Benefit, Deserted Wife's Allowance in receipt of Living Alone and Over 80 Allowances, 2003	35
Table C12	Number of Recipients of Widow's, Widower's and One-Parent Family Payments by Payment Type and County, 2003 (Estimated)	36

Section D: Child Related Payments		Page
Table D1	Expenditure on Child Related Payments by Payment Type, 2002 and 2003	39
Table D2	Expenditure on Child Benefit, 1994 to 2003	39
Table D3	Expenditure on Orphans (Contributory) Allowance and Orphan's (Non-Contributory) Pension, 1994 to 2003	39
Table D4	Expenditure on Maternity, Adoptive, and Health & Safety Benefit, 1994 to 2003	40
Table D5	Number of Recipients of Orphan's Pensions, 2002 and 2003	40
Table D6	Number of Recipients of Maternity Benefit, Health & Safety Benefit and Adoptive Benefit, 2002 and 2003	40
Table D7	Number of Families and Child Beneficiaries of Child Benefit, 1994 to 2003	41
Table D8	Number of Families Receiving Child Benefit by Number of Child Beneficiaries, 1995 to 2003	41
Table D9	Number of Child Beneficiaries of Child Benefit by Age, 1995 to 2003 (Estimated)	42
Table D10	Number of Recipients of Qualified Child Increases by Payment Type, 2003 (Estimated)	43
Table D11	Number of Recipients of Orphan's Allowance/Pension, Child Benefit, Maternity Benefit, and Health & Safety Benefit by County, 2003 (Estimated)	44

Section E: Illness, Disability and Caring		Page
Table E1	Expenditure on Illness, Disability and Caring by Payment Type, 2002 and 2003	47
Table E2	Expenditure on Illness, Disability and Caring by Payment Type, 1994 to 2003	47
Table E3	Recipients of Illness, Disability and Caring Payments by Payment Type, 2002 and 2003	48
Table E4	Number of Recipients of Invalidity Pension, Disability Benefit, Disablement Pension, Disability Allowance, Carer's Allowance, Death Benefit Pension & Blind Person's Pension, 1994 to 2003	48
Table E5	Number of Living Alone and Over 80 Allowances by Payment Type, 2003	49
Table E6	Number of Recipients of Disability Benefit by Age and Sex, 2003 (Estimated)	49
Table E7	Number of Recipients of Invalidity Pension by Age and Sex, 2003 (Estimated)	49
Table E8	Number of Recipients of Carer's Benefit and Carer's Allowance by Age and Sex, 2003 (Estimated)	50
Table E9	Number of Recipients of Blind Pension by Age and Sex, 2003 (Estimated)	50
Table E10	Number of Recipients of Disability Allowance by Age and Sex, 2003 (Estimated)	51
Table E11	Number of Recipients of Death Benefit Pension and Disablement Pension by Age and Sex, 2003 (Estimated)	51
Table E12	Number of Recipients of Injury Benefit and Interim Disability Benefit by Age and Sex, 2003 (Estimated)	52
Table E13	Number of Recipients of Disablement Benefit by Degree of Disablement, 2003	52
Table E14	Number of Recipients of Illness, Disability and Caring Payments by Payment Type and Number of Dependants, 2003 (Estimated)	53
Table E15	Number of Recipients of Illness, Disability and Caring Payments by Payment Type and County, 2003 (Estimated)	54
Table E16	Number of Disablement Cases Referred to Medical Assessors for Assessment or Reassessment, 1994 to 2003	55
Table E17	Number of Disability Benefit Cases Referred to Medical Assessors, 1994 to 2003	55
Table E18	Number of Disability Allowance Cases Referred to Medical Assessors, 1997 to 2003	56

Section F: Unemployment Supports

Page

Table F1	Expenditure on Unemployment Supports by Payment Type, 2002 and 2003	59
Table F2	Expenditure on Unemployment Supports by Payment Type, 1994 to 2003	59
Table F3	Number of Recipients of Unemployment Benefit and Unemployment Assistance, 1994 to 2003	60
Table F4	Number of Recipients of Unemployment Benefit and Unemployment Assistance by Number of Dependants, 2003 (Estimated)	60
Table F5	Number of Persons on the Live Register, on the last Friday of each Month, 2003	61
Table F6	Average Number of Persons on the Live Register, 1994 to 2003	61
Table F7	Flows on and off the Live Register by Month, 2003	62
Table F8	Number of Persons on the Live Register by Age and Sex, October 2003 (Estimated)	63
Table F9	Number of Persons on the Live Register in October 2003, Classified by duration of claim.	63
Table F10	Number of Persons on the Live Register in October by Sex and Duration, 1994 to 2003	64
Table F11	Categories Excluded from the Live Register: Number of Short-Time Workers, Self-Employed and Persons aged 65 and over, in each Month during 2003	65
Table F12	Categories Excluded from the Live Register: Average Number of Short-Time Workers, Self-Employed and Persons aged 65 and over, 1994 to 2003	66
Table F13	Average Live Register, Total Labour Force and Seasonally Adjusted Standardised Unemployment Rate, 1994 to 2003	66
Table F14	Numbers on the Live Register by County, 1994 to 2003	67

Section G: Employment Supports**Page**

Table G1	Expenditure on Employment Supports by Payment Type, 2002 and 2003	71
Table G2	Expenditure on Family Income Supplement and Other Employment Supports, 1994 to 2003	71
Table G3	Number of recipients of Employment Supports By Payment Type, 2002 and 2003	72
Table G4	Number of Families receiving Family Income Supplement 1994 to 2003	72
Table G5	Number of Families receiving Family Income Supplement By Rate of Payment and Family Size, 2003	73
Table G6	Number of Families receiving Family Income Supplement By Age of Recipient and Family Income Group, 2003	73
Table G7	Number of Families receiving Family Income Supplement By Marital Status of Recipient and Family Income Group, 2003	74
Table G8	Number of recipients of Back to Work Allowance By Employment Status and Sex, 2003	74
Table G9	Number of Recipients of Back to Work Enterprise Allowance, Back to Work Allowance, Back to Education Allowance and Farm Assist/Smallholders, by Age and Sex, 2003	74
Table G10	Number of recipients of Farm Assist/Smallholders, 1994 to 2003	75
Table G11	Number of Recipients of Employment Supports by County, 2003	75

xvi

Section H: Supplementary Welfare Allowance

Table H1	Expenditure on Supplementary Welfare Allowance Scheme, 2002 and 2003	79
Table H2	Expenditure on Supplementary Welfare Allowance Scheme, 1994 to 2003	79
Table H3	Gross Expenditure on Supplementary Welfare Allowance By Health Board Region, 2003	80
Table H4	Expenditure on Exceptional Needs Payments, Other Exceptional Supplementary Welfare Allowance Payments and Urgent Needs Payments, 2003	81
Table H5	Number of Recipients of Supplementary Welfare Allowance By Health Board Region, 2003	82
Table H6	Number of Recipients of Basic SWA, Rent Supplement And Mortgage Interest Supplement, Local Authority Mortgage Interest Supplement and Other supplements 2002 and 2003	83
Table H7	Number of Recipients of Basic SWA, Rent Supplement, Mortgage Interest Supplement and Local Authority Mortgage Interest Supplement and other Supplements by Age and Sex, 2003	84

		Page
Table H8	Number of Recipients of Rent Supplement, Mortgage Interest Supplement and Local Authority Mortgage Interest Supplement by Primary Payment, 2003	85
Table H9	Number of Recipients of Rent Supplement, Mortgage Interest Supplement and Local Authority Mortgage Interest Supplement by Claim Duration, 2003	85
Table H10	Number of Recipients of Back to School Clothing And Footwear Allowance by Health Board Region, 2003	86
Table H11	Expenditure on Back to School Clothing And Footwear Allowance by Health Board Region, 2002/2003	86
Table H12	Number of Recipients of Basic Supplementary Welfare Allowance Payments by Category, 2003	87
Table H13	Number of Recipients of Rent Supplement by Duration and by Primary Payment, 2003	88
Table H14	Number of Recipients of Rent Supplement by Age and Duration 2003	89
Table H15	Number of Recipients of Basic SWA , Rent Supplement, Mortgage Interest Supplement and Local Authority Mortgage Interest Supplement and Other Supplements by County, 2003	90

Section J: Miscellaneous Payments and Grants

Table J1	Expenditure on Miscellaneous Payments and Grants by Payment Type, 2002 and 2003	93
Table J2	Total Expenditure on Free Schemes, 2002 to 2003	93
Table J3	Miscellaneous Benefits and Allowances: Number of Claims Awarded, 2002 and 2003	94
Table J4	Number of Recipients of Free Schemes by Type of Payment Received, 2003	94
Table J5	Number of Recipients of Social Welfare Payments by Payment Type and Method of Payment, 2003	95

List of Graphs

		Page
Graph A1	Expenditure on Social Welfare by Programme, 2003	2
Graph A2	Expenditure on Main Social Insurance Schemes 1994 to 2003	7
Graph A3	Expenditure on Main Social Assistance Schemes 1994 to 2003	7
Graph A4	Financing of the Social Insurance Fund, 2003	8
Graph A5	Number of Recipients of Weekly Social Welfare Payments By Programme Area, 2003	9
Graph A6	Recipients of Main Social Assistance Payments 1994 to 2003	12
Graph A7	Recipients of Main Social Insurance Payments 1994 to 2003	12
Graph A8	Analysis of Insured Population, 2002	18
Graph B1	Number of Recipients of Old Age Pensions, 1994 to 2003	24
Graph C1	Number of Recipients of One-Parent Family Payment by Age and Sex, 2003	30
Graph D1	Number of Families receiving Child Benefit by Number of Child Beneficiaries, 1995 to 2003	38
Graph E1	Number of Recipients of Carer's Allowance by Sex, 1994 to 2003	46
Graph F1	Expenditure on Unemployment Benefit/Pay Related Benefit and Unemployment Assistance, 1994 to 2003	62
Graph F2	Number of Persons on the Live Register by Age and Sex, 2003	64
Graph F3	Number of Persons on the Live Register in October 2003, by Sex and Duration	65
Graph G1	Expenditure on Employment Supports, 1994 to 2003	72
Graph H1	Expenditure on Supplementary Welfare Allowance Scheme, 1994 to 2003	79
Graph J1	Expenditure on Household Benefits and Free Travel, 2003	92



Section A

summary and financial

Section A: Summary and Financial

Expenditure

Total Social Welfare expenditure in 2003 was €10,494 million, an increase of 10.3% over 2002. Expenditure in 2003 represented 28.9% of Gross Current Government expenditure and was equivalent to 9.6% of GNP (Table A2). The main areas of expenditure by programme group were Old Age (23.8%), Widow's, Widower's and One Parent Families (16.3%), Illness, Disability and Caring (15.4%), Unemployment Support (9.9%), Child Related Payments (17.1%), Supplementary Welfare Allowance (5.6%), and Employment Support (2.4%). Administration of the social welfare system accounted for 4.1% of total expenditure (Graph A1).

Total Social Welfare expenditure was financed by the Exchequer (53.9%) and the Social Insurance Fund (46.1%). The Social Insurance Fund was financed by Pay Related Social Insurance contributions from employers (72.6%), employees (21.2%), the self-employed (5.5%) and Investment Income (0.8%). See Tables A6 and A7.

Recipients of Weekly Social Welfare Payments

Over 959,000 people were in receipt of a weekly social welfare payment at the end of 2003. As these payments included increases in respect of over 123,000 Qualified Adults and over 402,000 Children, there were just over 1,511,000 beneficiaries in all. The number of recipients and beneficiaries increased by 20,461 and 15,026 respectively, year on year.

Graph A1

Expenditure on Social Welfare by Programme, 2003

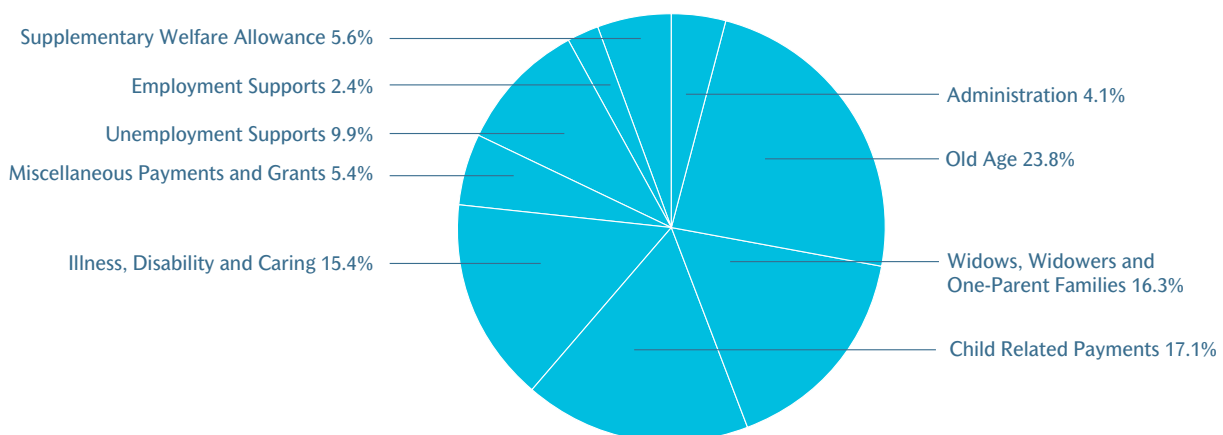


Table A1

Expenditure on Social Welfare by Programme, 2002 and 2003

Programme	2002	2003 Provisional	Change 2003 over 2002
	€000	€000	%
Old Age	2,296,278	2,499,967	8.9%
Widows, Widowers and One Parent Families	1,592,551	1,706,565	7.2%
Child Related Payments	1,578,905	1,789,305	13.3%
Illness, Disability and Caring	1,453,587	1,621,065	11.5%
Unemployment Supports	935,472	1,043,046	11.5%
Employment Supports	269,128	247,573	-8.0%
Supplementary Welfare Allowance	484,929	587,813	21.2%
Miscellaneous Payments and Grants	485,881	571,213	17.6%
Administration	420,094	427,029	1.7%
Total Expenditure	9,516,825	10,493,576	10.3%

Table A2

Expenditure on Social Welfare as a Percentage of Current Government Expenditure, GNP and GDP, 1994 to 2003

Year	Total Social Welfare Expenditure ⁽¹⁾ (€m)	Index of Expenditure	Consumer Price Index ⁽²⁾	Social Welfare Expenditure as a percentage of: ⁽³⁾		
				Gross Current Government Expenditure	Gross National Product	Gross Domestic Product
1994	4,775	100.0	100.0	27.4	11.4	10.3
1995 ⁽⁴⁾	5,332	111.7	102.7	28.7	11.4	10.1
1996 ⁽⁴⁾	5,558	116.4	104.4	28.5	10.8	9.6
1997 ⁽⁴⁾	5,744	120.3	106.0	26.7	9.7	8.6
1998 ⁽⁴⁾	6,046	126.6	108.5	27.1	8.9	7.8
1999 ⁽⁴⁾	6,283	131.6	110.3	26.0	8.2	7.0
2000 ⁽⁴⁾	6,713	140.6	116.5	25.9	7.6	6.5
2001 ⁽⁴⁾	7,842	164.2	122.2	26.2	8.1	6.8
2002 ⁽⁴⁾	9,517	199.3	127.8	28.8	9.2	7.4
2003 ⁽⁴⁾	10,494	219.8	132.2	28.9	9.6	7.8

(1) Includes the full cost of Supplementary Welfare Allowance which is administered by the Health Boards.

(2) Re-based from Consumer Price Index data published by the Central Statistics Office.

(3) Source: Central Statistics Office and Department of Finance.

(4) Total Social Welfare expenditure for these years includes expenditure on the Redundancy and Insolvency Schemes which are administered by the Department of Enterprise, Trade and Employment.

Table A3

Expenditure on Social Welfare by Payment Type, 2002 and 2003

Type of Payment	2002	2003	Change %
	€000	Provisional €000	
Old Age (Contributory) Pension	868,529	946,903	9.0%
Retirement Pension	803,413	898,981	11.9%
Old Age (Non-Contributory) Pension	537,308	565,006	5.2%
Pre-Retirement Allowance	87,028	89,077	2.4%
Total Old Age	2,296,278	2,499,967	8.9%
Widow/er's (Contributory) Pension	761,539	826,135	8.5%
Widow/er's (Non-Contributory) Pension	116,493	116,834	0.3%
Deserted Wife's Benefit	88,150	89,235	1.2%
Deserted Wife's Allowance	10,238	10,605	3.6%
Prisoner's Wife's Allowance	12	13	8.3%
One Parent Family Payment	613,035	660,586	7.8%
Widowed Parent Grant (Contributory)	2,971	2,867	-3.5%
Widowed Parent Grant (Non-Contributory)	113	290	156.6%
Total Widows, Widowers and One Parent Families	1,592,551	1,706,565	7.2%
Maternity Benefit	99,129	107,330	8.3%
Health and Safety Benefit	217	213	-1.8%
Adoptive Benefit	578	532	-8.0%
Orphan's (Contributory) Allowance	11,694	8,895	-23.9%
Orphan's (Non-Contributory) Pension	4,494	5,805	29.2%
Child Benefit	1,462,793	1,666,530	13.9%
Total Child Related Payments	1,578,905	1,789,305	13.3%
Disability Benefit	385,297	433,410	12.5%
Incapacity Pension	403,617	440,263	9.1%
Injury Benefit	11,842	11,878	0.3%
Disablement Benefit	59,393	60,810	2.4%
Death Benefit	5,558	5,813	4.6%
Disability Allowance	407,585	463,608	13.7%
Medical Care	225	251	11.6%
Carer's Allowance	160,042	183,273	14.5%
Carer's Benefit	5,807	6,943	19.6%
Blind Person's Pension	14,221	14,816	4.2%
Total Illness, Disability and Caring	1,453,587	1,621,065	11.5%
Unemployment Benefit	423,487	477,094	12.7%
Unemployment Assistance	511,985	565,952	10.5%
Total Unemployment Supports	935,472	1,043,046	11.5%
Family Income Supplement	42,423	45,360	6.9%
Employment Support Services ⁽¹⁾	168,134	139,407	-17.1%
Farm Assist	58,571	62,806	7.2%
Total Employment Supports	269,128	247,573	-8.0%
Supplementary Welfare Allowance	484,929	587,813	21.2%
Total Supplementary Welfare Allowance	484,929	587,813	21.2%
Treatment Benefits ⁽¹⁾	60,796	63,348	4.2%
Rent Allowance	666	675	1.4%
Household Benefits and Free Travel	296,043	340,514	15.0%
Miscellaneous ⁽¹⁾	69,646	68,489	-1.7%
Equal Treatment - Insurance payments	17	5	-70.6%
Equal Treatment - Assistance payments	-	-	-
Redundancy and Insolvency ⁽²⁾	58,713	98,182	67.2%
Total Miscellaneous Payments and Grants	485,881	571,213	17.6%
Administration - Insurance Schemes	177,458	184,042	3.7%
Administration - Assistance Schemes	242,636	242,987	0.1%
TOTAL ADMINISTRATION	420,094	427,029	1.7%
GRAND TOTAL	9,516,825	10,493,576	10.3%

(1) See Additional Expenditure Details in Table A4.

(2) These schemes are administered by the Department of Enterprise, Trade and Employment.

Table A4

Additional Expenditure Details, 2002 and 2003

Additional Details	2002	2003 Provisional	Change %
	€000	€000	
EMPLOYMENT SUPPORT SERVICES			
Back to Work Allowance/Back to Work Enterprise Allowance	129,087	97,396	-24.6%
Student's Summer Jobs Scheme	66	-	-
Back to Education Allowance	35,392	38,276	8.1%
Part-time Job Incentive Scheme	1,126	1,056	-6.2%
Other	2,463	2,679	8.8%
TOTAL	168,134	139,407	-17.1%
TREATMENT BENEFITS			
Dental	44,443	45,412	2.2%
Optical	14,646	14,261	-2.6%
Medical and Surgical	1,717	3,675	114.0%
TOTAL	60,806	63,348	4.2%
HOUSEHOLD BENEFITS AND FREE TRAVEL			
Social Insurance			
Fuel Allowances	33,279	33,109	-0.5%
Free Electricity	37,379	44,924	20.2%
Free Bottled Gas	25	29	16.0%
Free Natural Gas	2,488	3,729	49.9%
Free Television Licence	18,580	26,280	41.4%
Free Telephone Rental	43,519	50,165	15.3%
TOTAL	135,270	158,236	17.0%
HOUSEHOLD BENEFITS AND FREE TRAVEL			
Social Assistance			
Fuel Allowances	47,253	50,099	6.0%
Free Travel	45,625	49,820	9.2%
Free Electricity	25,269	30,478	20.6%
Free Bottled Gas	83	91	9.6%
Free Natural Gas	788	1,176	49.2%
Free Television Licence	12,387	17,521	41.4%
Free Telephone Rental	29,368	33,093	12.7%
TOTAL	160,773	182,278	13.4%
MISCELLANEOUS			
Bereavement Grants	12,224	12,288	0.5%
School Meals	2,023	3,293	62.8%
Grants for Marriage & Family Counselling Services	6,717	7,009	4.3%
Combat Poverty Agency	4,771	5,304	11.2%
Programme for Peace & Reconciliation	919	-	-
Comhairle	16,289	17,011	4.4%
Family Support Agency ⁽¹⁾	-	6,549	-
Grants for Community & Family Support Groups	14,852	2,425	-83.5%
Money Advice and Budgeting Services	9,287	9,405	1.3%
Scheme of Community Support for Older People	17	-	-
Other Grants/Payments	2,547	5,205	104.4%
TOTAL	69,646	68,489	-1.7%

(1) The Family Support Agency was established in May 2003.

Table A5

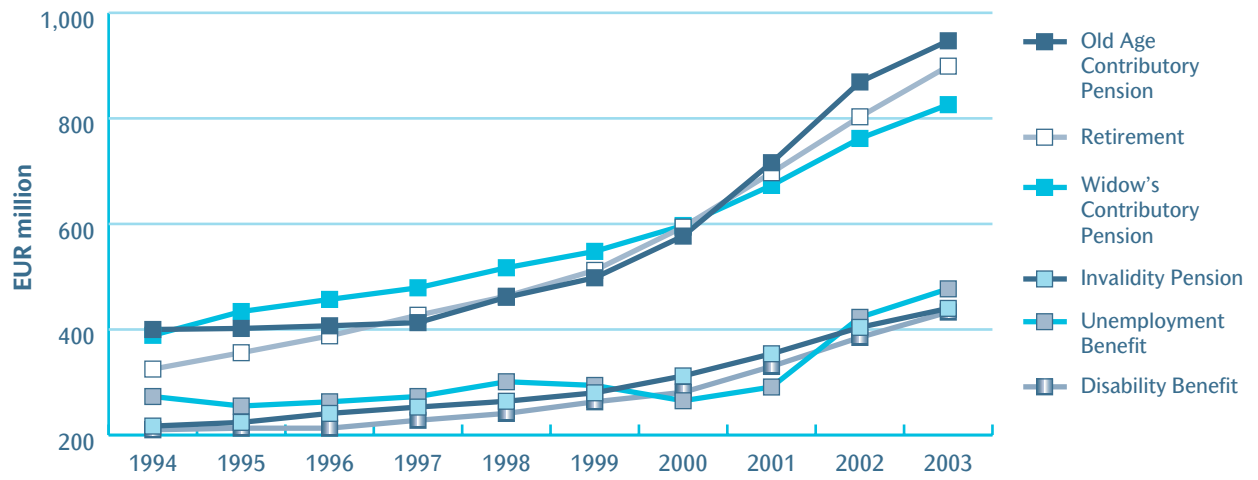
Social Insurance and Social Assistance Expenditure by Scheme, 2002 and 2003

Type of Payment	Expenditure €000		Change %
	2002	2003 Provisional	
Old Age (Contributory) Pension	868,529	946,903	9.0%
Retirement Pension	803,413	898,981	11.9%
Widow/er's (Contributory) Pension	761,539	826,135	8.5%
Widowed Parent Grant	2,971	2,867	-3.5%
Deserted Wife's Benefit	88,150	89,235	1.2%
Maternity Benefit	99,129	107,330	8.3%
Health and Safety Benefit	217	213	-1.8%
Adoptive Benefit	578	532	-8.0%
Orphan's (Contributory) Allowance	11,694	8,895	-23.9%
Disability Benefit	385,297	433,410	12.5%
Invalidity Pension	403,617	440,263	9.1%
Injury Benefit	11,842	11,878	0.3%
Carer's Benefit	5,807	6,943	19.6%
Medical Care	225	251	11.6%
Disablement Pension	59,393	60,810	2.4%
Death Benefit Pension	5,558	5,813	4.6%
Unemployment Benefit	423,487	477,094	12.7%
Treatment Benefit	60,796	63,348	4.2%
Bereavement Grant	12,224	12,288	0.5%
Household Benefits and Free Travel ⁽¹⁾	135,270	158,236	17.0%
Equal Treatment Payments	17	5	-70.6%
Redundancy and Insolvency Administration	58,713	98,182	67.2%
Administration	177,458	184,042	3.7%
TOTAL SOCIAL INSURANCE	4,375,924	4,833,654	10.5%
Old Age (Non-Contributory) Pension	537,308	565,006	5.2%
Pre-Retirement Allowance	87,028	89,077	2.4%
Widow/er's (Non-Contributory) Pension	116,493	116,834	0.3%
Widowed Parent Grant	113	290	156.6%
Deserted Wife's Allowance	10,238	10,605	3.6%
Prisoner's Wife's Allowance	12	13	8.3%
One-Parent Family Payment	613,035	660,586	7.8%
Orphan's (Non-Contributory) Pension	4,494	5,805	29.2%
Child Benefit	1,462,793	1,666,530	13.9%
Disability Allowance	407,585	463,608	13.7%
Blind Person's Pension	14,221	14,816	4.2%
Carer's Allowance	160,042	183,273	14.5%
Unemployment Assistance	511,985	565,952	10.5%
Farm Assist	58,571	62,806	7.2%
Employment Support Services ⁽¹⁾	168,134	139,407	-17.1%
Family Income Supplement	42,423	45,360	6.9%
Supplementary Welfare Allowance	484,929	587,813	21.2%
Rent Allowance	666	675	1.4%
Household Benefits and Free Travel ⁽¹⁾	160,773	182,278	13.4%
Miscellaneous ⁽¹⁾	57,422	56,201	-2.1%
Equal Treatment Payments	-	-	-
Administration	242,636	242,987	0.1%
TOTAL SOCIAL ASSISTANCE	5,140,901	5,659,922	10.1%
GRAND TOTAL	9,516,825	10,493,576	10.3%

(1) See Additional Expenditure Details in Table A4.

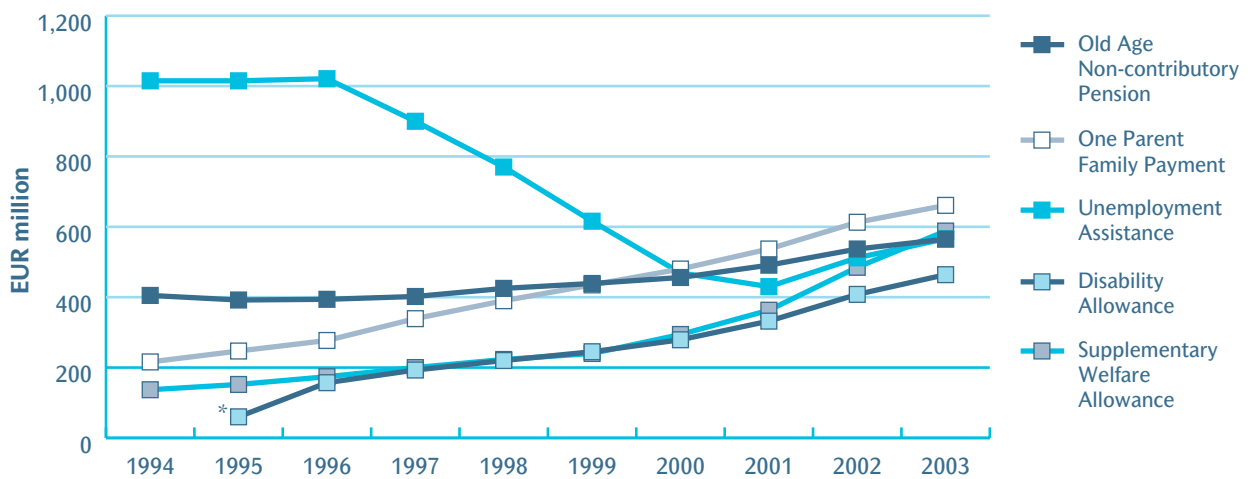
Graph A2

Expenditure on Main Social Insurance Schemes 1994 to 2003



Graph A3

Expenditure on Main Social Assistance Schemes, 1994 to 2003



*From September 1995 (up to that point payment was funded by health boards)

Table A6

Financing of Social Welfare Expenditure, 2002 and 2003

Sources of Finance	2002		2003 Provisional	
	€000	%	€000	%
State	5,116,001	53.8%	5,659,922	53.9%
Social Insurance Fund	4,375,924	46.0%	4,833,654	46.1%
National Lottery	24,900	0.3%	-	0.0%
Other Receipts	-	0.0%	-	0.0%
TOTAL	9,516,825	100.0%	10,493,576	100.0%

Table A7

Financing of the Social Insurance Fund, 2002 and 2003

INCOME	2002		2003 Provisional	
	€000	%	€000	%
Employer PRSI	3,520,443	73.4%	3,693,623	72.6%
Employee PRSI	974,219	20.3%	1,077,413	21.2%
Self-Employed PRSI	252,455	5.3%	277,696	5.5%
Investment Income	51,015	1.1%	40,718	0.8%
Other Receipts	111	0.0%	19	0.0%
Total Income	4,798,243	100.0%	5,089,469	100.0%
Expenditure on Social Insurance Schemes	4,375,924		4,833,654	
Surplus	422,319		255,815	

(1) The breakdown between employer and employee contributions requires a detailed analysis of data collected by the Revenue Commissioners. The contributions are apportioned on the basis of the most recently available information and are of necessity provisional.

Graph A4

Financing of the Social Insurance Fund, 2003

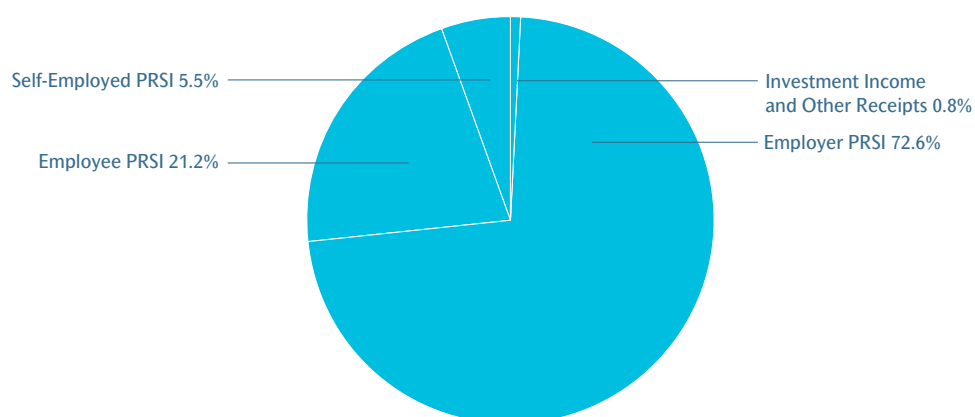


Table A8

Number of Recipients and Beneficiaries of Weekly Social Welfare Payments, 1994 to 2003

Year	Number of Recipients		Number of Beneficiaries	
1994	823,308 ⁽¹⁾		1,483,200 ⁽¹⁾	
1995	839,633 ⁽¹⁾		1,443,531 ⁽¹⁾	
1996	874,335 ⁽¹⁾		1,465,557 ⁽¹⁾	
1997	870,852 ⁽¹⁾		1,485,943 ⁽¹⁾	
1998	841,983 ⁽¹⁾	878,249 ⁽²⁾	1,387,372 ⁽¹⁾	1,475,496 ⁽²⁾
1999	838,061 ⁽¹⁾	880,758 ⁽²⁾	1,371,730 ⁽¹⁾	1,476,088 ⁽²⁾
2000	826,274 ⁽¹⁾	869,994 ⁽²⁾	1,327,377 ⁽¹⁾	1,432,774 ⁽²⁾
2001	866,743 ⁽¹⁾	903,375 ⁽²⁾	1,372,911 ⁽¹⁾	1,460,574 ⁽²⁾
2002	908,608 ⁽¹⁾	938,971 ⁽²⁾	1,430,521 ⁽¹⁾	1,496,714 ⁽²⁾
2003	936,343 ⁽¹⁾	959,432 ⁽²⁾	1,463,046 ⁽¹⁾	1,511,740 ⁽²⁾

(1) These series are included for comparability purposes and do not include the number of recipients and beneficiaries of certain Employment Supports (Back to Work Allowance, Back to Education Allowance, Part-Time Job Incentive Scheme and earlier analogous payments). This arises as fully comprehensive data in relation to the number of recipients and beneficiaries of these schemes is not available.

(2) These series show the number of recipients and beneficiaries, as appropriate, of social welfare weekly payments, including all Employment Supports. See Tables A9 and A11.

Graph A5

Number of Recipients of Weekly Social Welfare Payments by Programme Area, 2003

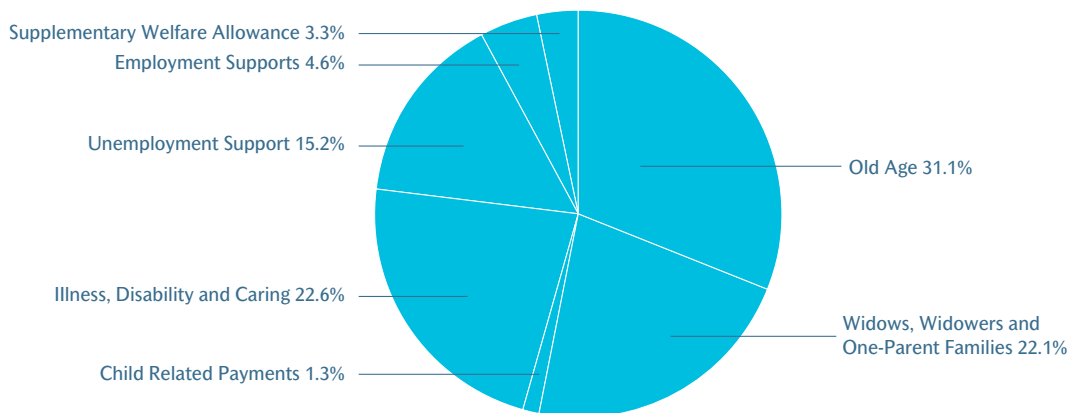


Table A9

Number of Recipients of Weekly Social Welfare Payments by Payment Type and Programme, 2002 and 2003

Type of Payment	Recipients		Change %
	2002	2003	
Old Age (Contributory) Pension	105,295	113,970	8.2%
Retirement Pension	83,055	86,509	4.2%
Old Age (Non-Contributory) Pension	87,823	86,733	-1.2%
Pre-Retirement Allowance	11,222	10,957	-2.4%
Total Old Age	287,395	298,169	3.7%
Widow/er's (Contributory) Pension	102,494	103,831	1.3%
Widow/er's (Non-Contributory) Pension	16,318	15,783	-3.3%
Deserted Wife's Benefit	11,794	11,339	-3.9%
Deserted Wife's Allowance	1,582	1,523	-3.7%
Prisoner's Wife's Allowance	2	2	0.0%
One-Parent Family Payment	79,195	79,296	0.1%
Total Widows, Widowers and One-Parent Families	211,385	211,774	0.2%
Maternity Benefit	9,603	10,594	10.3%
Health and Safety Benefit	32	12	-62.5%
Adoptive Benefit	53	33	-37.7%
Orphan's (Contributory) Allowance	1,680	967	-42.4%
Orphan's (Non-Contributory) Pension	1,328	580	-56.3%
Total Child Related Payments	12,696	12,186	-4.0%
Disability Benefit	54,590	57,464	5.3%
Invalidity Pension	52,147	53,414	2.4%
Injury Benefit	828	821	-0.8%
Interim Disability Benefit	404	295	-27.0%
Disablement Pension	11,612	11,898	2.5%
Death Benefit Pension	668	664	-0.6%
Carer's Benefit	615	639	3.9%
Disability Allowance	62,783	67,720	7.9%
Blind Pension	2,095	2,061	-1.6%
Carer's Allowance	20,395	21,316	4.5%
Total Illness, Disability and Caring	206,137	216,292	4.9%
Unemployment Benefit	66,416	70,090	5.5%
Unemployment Assistance	71,566	75,249	5.1%
Total Unemployment Supports	137,982	145,339	5.3%
Back to Work Allowance Employee	11,496	7,197	-37.4%
Back to Work Enterprise Allowance			
Self Employed First Year	3,229	1,340	-58.5%
Back to Work Enterprise Allowance			
Self Employed Years 2 - 4	10,261	8,532	-16.9%
Back to Education Allowance	5,041	5,696	13.0%
Part-Time Job Incentive Scheme	336	324	-3.6%
Family Income Supplement	12,043	12,317	2.3%
Farm Assist/Smallholders	8,514	8,707	2.3%
Total Employment Supports	50,920	44,113	-13.4%
Supplementary Welfare Allowance ⁽¹⁾	32,073	31,217	-2.7%
Total Supplementary Welfare Allowances	32,073	31,217	-2.7%
Rent Allowance	383	342	-10.7%
Total Miscellaneous Payments	383	342	-10.7%
GRAND TOTAL	938,971	959,432	2.2%

(1) Includes basic weekly payments only. See Section H for details of other Supplementary Welfare Allowance payments.

Table A10

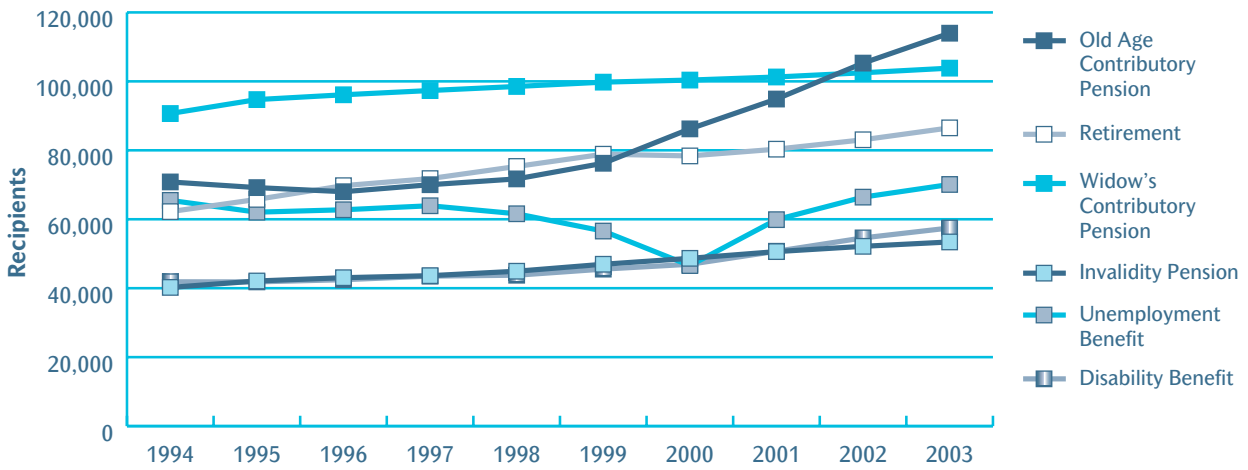
Number of Recipients of Weekly Social Welfare Payments by Payment Type and Insurance or Assistance, 2002 and 2003

Type of Payment	Recipients		Change %
	2002	2003	
Old Age (Contributory) Pension	105,295	113,970	8.2%
Retirement Pension	83,055	86,509	4.2%
Widow/er's (Contributory) Pension	102,494	103,831	1.3%
Deserted Wife's Benefit	11,794	11,339	-3.9%
Maternity Benefit	9,603	10,594	10.3%
Health and Safety Benefit	32	12	-62.5%
Adoptive Benefit	53	33	-37.7%
Orphan's (Contributory) Allowance	1,680	967	-42.4%
Disability Benefit	54,590	57,464	5.3%
Invalidity Pension	52,147	53,414	2.4%
Injury Benefit	828	821	-0.8%
Interim Disability Benefit	404	295	-27.0%
Disablement Pension	11,612	11,898	2.5%
Death Benefit Pension	668	664	-0.6%
Carer's Benefit	615	639	3.9%
Unemployment Benefit ⁽¹⁾	66,416	70,090	5.5%
Total Social Insurance	501,286	522,540	4.2%
Old Age (Non-Contributory) Pension	87,823	86,733	-1.2%
Pre-Retirement Allowance	11,222	10,957	-2.4%
Widow/er's (Non-Contributory) Pension	16,318	15,783	-3.3%
Deserted Wife's Allowance	1,582	1,523	-3.7%
Prisoner's Wife's Allowance	2	2	0.0%
One-Parent Family Payment	79,195	79,296	0.1%
Orphan's (Non-Contributory) Pension	1,328	580	-56.3%
Disability Allowance	62,783	67,720	7.9%
Blind Pension	2,095	2,061	-1.6%
Carer's Allowance	20,395	21,316	4.5%
Unemployment Assistance	71,566	75,249	5.1%
Back to Work Allowance Employee	11,496	7,197	-37.4%
Back to Work Enterprise Allowance			
Self Employed First Year	3,229	1,340	-58.5%
Back to Work Enterprise Allowance			
Self Employed Years 2 - 4	10,261	8,532	-16.9%
Back to Education Allowance	5,041	5,696	13.0%
Part-Time Job Incentive Scheme	336	324	-3.6%
Family Income Supplement	12,043	12,317	2.3%
Farm Assist/Smallholders	8,514	8,707	2.3%
Supplementary Welfare Allowance ⁽¹⁾	32,073	31,217	-2.7%
Rent Allowance	383	342	-10.7%
Total Social Assistance	437,685	436,892	-0.2%
GRAND TOTAL	938,971	959,432	2.2%

(1) Includes basic weekly payments only. See Section H for details of other Supplementary Welfare Allowance payments.

Graph A6

Recipients of Main Social Insurance Payments, 1994 to 2003



Graph A7

Recipients of Main Social Assistance Payments, 1994 to 2003

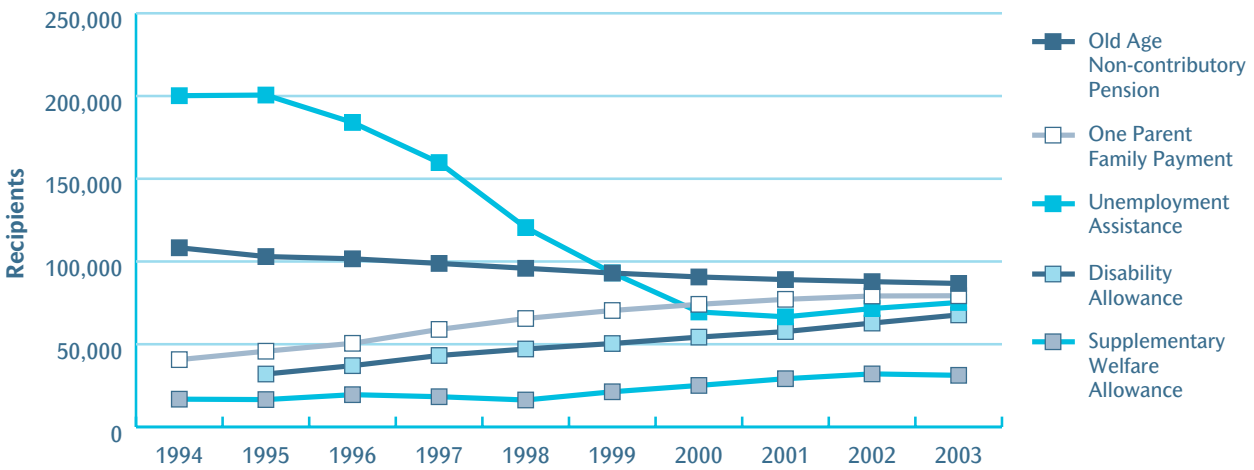


Table A11

Number of Beneficiaries of Weekly Social Welfare Payments by Payment Type and Programme, 2002 and 2003

Type of Payment	Beneficiaries		Change %
	2002	2003	
Old Age (Contributory) Pension	131,905	141,399	7.2%
Retirement Pension	109,611	113,395	3.5%
Old Age (Non-Contributory) Pension	92,563	91,251	-1.4%
Pre-Retirement Allowance	17,086	16,392	-4.1%
Total Old Age	351,165	362,437	3.2%
Widow/er's (Contributory) Pension	117,438	118,309	0.7%
Widow/er's (Non-Contributory) Pension	16,318	15,783	-3.3%
Deserted Wife's Benefit	20,787	18,932	-8.9%
Deserted Wife's Allowance	1,582	1,523	-3.7%
Prisoner's Wife's Allowance	2	2	0.0%
One-Parent Family Payment	206,241	207,347	0.5%
Total Widows, Widowers and One-Parent Families	362,368	361,896	-0.1%
Maternity Benefit	9,603	10,594	10.3%
Health and Safety Benefit	64	21	-67.2%
Adoptive Benefit	53	33	-37.7%
Orphan's (Contributory) Allowance	1,680	967	-42.4%
Orphan's (Non-Contributory) Pension	1,328	580	-56.3%
Total Child Related Payments	12,728	12,195	-4.2%
Disability Benefit	106,835	113,454	6.2%
Invalidity Pension	84,144	83,957	-0.2%
Injury Benefit	1,536	1,450	-5.6%
Interim Disability Benefit	707	464	-34.4%
Disablement Pension	12,600	12,824	1.8%
Death Benefit Pension	862	851	-1.3%
Carer's Benefit	1,351	1,546	14.4%
Disability Allowance	83,562	89,533	7.1%
Blind Pension	2,668	2,627	-1.5%
Carer's Allowance	38,931	40,723	4.6%
Total Illness, Disability and Caring	333,196	347,429	4.3%
Unemployment Benefit	120,322	123,522	2.7%
Unemployment Assistance	125,959	130,175	3.3%
Total Unemployment Supports	246,281	253,697	3.0%
Back to Work Allowance Employee	25,810	16,124	-37.5%
Back to Work Enterprise Allowance - Self Employed First Year	7,471	3,486	-53.3%
Back to Work Enterprise Allowance - Self Employed Years 2 - 4	25,117	20,072	-20.1%
Back to Education Allowance	7,459	8,688	16.5%
Part-Time Job Incentive Scheme	336	324	-3.6%
Family Income Supplement	38,574	38,726	0.4%
Farm Assist/Smallholders	22,117	22,066	-0.2%
Total Employment Supports	126,884	109,486	-13.7%
Supplementary Welfare Allowance ⁽¹⁾	63,709	64,258	0.9%
Total Supplementary Welfare Allowances	63,709	64,258	0.9%
Rent Allowance	383	342	-10.7%
Total Miscellaneous Payments	383	342	-10.7%
GRAND TOTAL	1,496,714	1,511,740	1.0%

(1) Includes basic weekly payments only. See Section H for details of other Supplementary Welfare Allowance payments.

Table A12

Number of Beneficiaries of Weekly Social Welfare Payments by Payment Type and Insurance or Assistance, 2002 and 2003

Type of Payment	Beneficiaries		Change %
	2002	2003	
Old Age (Contributory) Pension	131,905	141,399	7.2%
Retirement Pension	109,611	113,395	3.5%
Widow/er's (Contributory) Pension	117,438	118,309	0.7%
Deserted Wife's Benefit	20,787	18,932	-8.9%
Maternity Benefit	9,603	10,594	10.3%
Health and Safety Benefit	64	21	-67.2%
Adoptive Benefit	53	33	-37.7%
Orphan's (Contributory) Allowance	1,680	967	-42.4%
Disability Benefit	106,835	113,454	6.2%
Invalidity Pension	84,144	83,957	-0.2%
Injury Benefit	1,536	1,450	-5.6%
Interim Disability Benefit	707	464	-34.4%
Disablement Pension	12,600	12,824	1.8%
Death Benefit Pension	862	851	-1.3%
Carer's Benefit	1,351	1,546	14.4%
Unemployment Benefit	120,322	123,522	2.7%
Total Social Insurance	719,498	741,718	3.1%
Old Age (Non-Contributory) Pension	92,563	91,251	-1.4%
Pre-Retirement Allowance	17,086	16,392	-4.1%
Widow/er's (Non-Contributory) Pension	16,318	15,783	-3.3%
Deserted Wife's Allowance	1,582	1,523	-3.7%
Prisoner's Wife's Allowance	2	2	0.0%
One-Parent Family Payment	206,241	207,347	0.5%
Orphan's (Non-Contributory) Pension	1,328	580	-56.3%
Disability Allowance	83,562	89,533	7.1%
Blind Pension	2,668	2,627	-1.5%
Carer's Allowance	38,931	40,723	4.6%
Unemployment Assistance	125,959	130,175	3.3%
Family Income Supplement	38,574	38,726	0.4%
Back to Work Allowance Employee	25,810	16,124	-37.5%
Back to Work Enterprise Allowance - Self Employed First Year	7,471	3,486	-53.3%
Back to Work Enterprise Allowance - Self Employed Years 2 - 4	25,117	20,072	-20.1%
Back to Education Allowance	7,459	8,688	16.5%
Part-Time Job Incentive Scheme	336	324	-3.6%
Farm Assist/Smallholders	22,117	22,066	-0.2%
Supplementary Welfare Allowance ⁽¹⁾	63,709	64,258	0.9%
Rent Allowance	383	342	-10.7%
Social Assistance	777,216	770,022	-0.9%
GRAND TOTAL	1,496,714	1,511,740	1.0%

(1) Includes basic weekly payments only. See Section H for details of other Supplementary Welfare Allowance payments.

Table A13

Number of Recipients of Weekly Social Welfare Payments by Sex, Payment Type and Insurance or Assistance, 2003

Type of Payment	2003				Total
	Male	%	Female	%	
Old Age (Contributory) Pension	71,916	63.1%	42,054	36.9%	113,970
Retirement Pension	63,152	73.0%	23,357	27.0%	86,509
Widow/er's (Contributory) Pension	11,214	10.8%	92,617	89.2%	103,831
Deserted Wife's Benefit	-	0.0%	11,339	100.0%	11,339
Maternity Benefit	-	0.0%	10,594	100.0%	10,594
Health and Safety Benefit	-	0.0%	12	100.0%	12
Adoptive Benefit	-	0.0%	33	100.0%	33
Orphan's (Contributory) Allowance ⁽¹⁾	484	50.1%	483	49.9%	967
Disability Benefit	21,378	37.2%	36,086	62.8%	57,464
Invalidity Pension	28,032	52.5%	25,382	47.5%	53,414
Injury Benefit	582	70.9%	239	29.1%	821
Interim Disability Benefit	202	68.5%	93	31.5%	295
Disablement Pension	9,709	81.6%	2,189	18.4%	11,898
Death Benefit Pension	4	0.6%	660	99.4%	664
Carer's Benefit	79	12.4%	560	87.6%	639
Unemployment Benefit	34,355	49.0%	35,735	51.0%	70,090
Total Social Insurance	241,107	46.1%	281,433	53.9%	522,540
Old Age (Non-Contributory) Pension	36,603	42.2%	50,130	57.8%	86,733
Pre-Retirement Allowance	8,711	79.5%	2,246	20.5%	10,957
Widow/er's (Non-Contributory) Pension	282	1.8%	15,500	98.2%	15,782
Deserted Wife's Allowance	-	0.0%	1,523	100.0%	1,523
Prisoner's Wife's Allowance	-	0.0%	2	100.0%	2
One-Parent Family Payment	1,837	2.3%	77,459	97.7%	79,296
Orphan's (Non-Contributory) Pension (1)	290	50.0%	290	50.0%	580
Disability Allowance	40,596	59.9%	27,124	40.1%	67,720
Blind Pension	1,028	49.9%	1,033	50.1%	2,061
Carer's Allowance	4,299	20.2%	17,017	79.8%	21,316
Unemployment Assistance	55,570	73.8%	19,679	26.2%	75,249
Family Income Supplement	4,545	36.9%	7,772	63.1%	12,317
Back to Work Allowance	4,851	67.4%	2,346	32.6%	7,197
Back to Work Enterprise Allowance	7,671	77.7%	2,201	22.3%	9,872
Back to Education Allowance	2,873	50.4%	2,823	49.6%	5,696
Part-Time Job Incentive Scheme ⁽¹⁾	162	50.0%	162	50.0%	324
Farm Assist/Smallholders	8,102	93.1%	605	6.9%	8,707
Supplementary Welfare Allowance	17,360	55.6%	13,857	44.4%	31,217
Rent Allowance	263	76.9%	79	23.1%	342
Total Social Assistance	195,043	44.6%	241,848	55.4%	436,891
GRAND TOTAL	436,150	45.5%	523,281	54.5%	959,431

(1) Gender breakdown is estimated.

Table A14

Number of Recipients, Qualified Adults and Qualified Children of Weekly Social Welfare Payments, 2003

Type of Payment			Qualified Children			Total
	Recipients	Qualified Adults	Full Rate	Half Rate ⁽¹⁾	Other Children	
Old Age (Contributory) Pension	113,970	25,495	1,156	778	-	141,399
Retirement Pension	86,509	25,277	1,133	476	-	113,395
Old Age (Non-Contributory) Pension	86,733	3,779	589	150	-	91,251
Pre-Retirement Allowance	10,957	3,770	1,445	220	-	16,392
Total Old Age	298,169	58,321	4,323	1,624	-	362,437
Widow/er's (Contributory) Pension	103,831	-	14,478	-	-	118,309
Widow/er's (Non-Contributory) Pension	15,783	-	-	-	-	15,783
Deserted Wife's Benefit	11,339	-	7,593	-	-	18,932
Deserted Wife's Allowance	1,523	-	-	-	-	1,523
Prisoner's Wife's Allowance	2	-	-	-	-	2
One-Parent Family Payment	79,296	-	127,291	760	-	207,347
Total Widows, Widowers and One-Parent Families	211,774	-	149,362	760	-	361,896
Maternity Benefit	10,594	-	-	-	-	10,594
Health and Safety Benefit	12	1	1	7	-	21
Adoptive Benefit	33	-	-	-	-	33
Orphan's (Contributory) Allowance	967	-	-	-	-	967
Orphan's (Non-Contributory) Pension	580	-	-	-	-	580
Total Child Related Payments	12,186	1	1	7	-	12,195
Disability Benefit	57,464	8,074	8,702	39,214	-	113,454
Invalidity Pension	53,414	10,381	6,711	13,451	-	83,957
Injury Benefit	821	115	152	362	-	1,450
Interim Disability Benefit	295	33	45	91	-	464
Disablement Pension	11,898	221	307	398	-	12,824
Death Benefit Pension	664	-	187	-	-	851
Carer's Benefit	639	-	23	884	-	1,546
Disability Allowance	67,720	5,717	10,485	5,611	-	89,533
Blind Pension	2,061	135	258	173	-	2,627
Carer's Allowance	21,316	-	2,243	17,164	-	40,723
Total Illness, Disability & Caring	216,292	24,676	29,113	77,348	-	347,429
Unemployment Benefit	70,090	7,438	11,595	34,399	-	123,522
Unemployment Assistance	75,249	15,662	31,980	7,284	-	130,175
Total Unemployment Supports	145,339	23,100	43,575	41,683	-	253,697
Back to Work Allowance Employee	7,197	2,031	5,717	1,179	-	16,124
Back to Work Enterprise Allowance Self Employed First Year	1,340	406	1,083	657	-	3,486
Back to Work Enterprise Allowance Self Employed Years 2 - 4	8,532	2,855	5,829	2,856	-	20,072
Back to Education Allowance	5,696	417	1,015	1,560	-	8,688
Part-Time Job Incentive scheme	324	-	-	-	-	324
Family Income Supplement (2)	12,317	-	-	-	26,409	38,726
Farm Assist/Smallholders	8,707	4,021	7,135	2,203	-	22,066
Total Employment Supports	44,113	9,730	20,779	8,455	26,409	109,486
Supplementary Welfare Allowance ⁽³⁾	31,217	7,775	25,266	-	-	-
Total Supplementary Welfare Allowances	31,217	7,775	25,266	-	-	64,258
Rent Allowance	342	-	-	-	-	-
Total Miscellaneous Payments	342	-	-	-	-	342
GRAND TOTAL⁽⁴⁾	959,432	123,603	272,419	129,877	26,409	1,511,740

(1) A Qualified Child increase is payable at half rate where a spouse living with the recipient, is not a Qualified Adult. Each spouse may receive half the Qualified Child increase where both spouses are in receipt of a Social Welfare payment. This can result in some double counting of the actual number of Qualified Children.

(2) The number of Children is an estimated figure.

(3) Includes basic weekly payments only.

(4) The total figures include a small element of double counting as some persons could be in receipt of more than one payment, the second of which might be, for example, Disablement Pension, Rent Allowance or Family Income Supplement

Table A15

Number of Persons in each Social Insurance Class, 2001 (Short Tax Year) and 2002

Insurance Class	Insured for	Number Insured					
		2001 (Short Tax Year) ⁽¹⁾			2002		
		Male	Female	Total	Male	Female	Total
A	All Benefits ⁽³⁾	949,428	879,238	1,828,666	985,616	920,900	1,906,516
B	Widow/er's (Contributory) Pensions, Bereavement Grant, Orphan's (Contributory) Allowance, Carer's Benefit and limited Injuries Benefits	20,473	13,442	33,915	19,307	12,973	32,280
C	Widow/er's (Contributory) Pensions, Bereavement Grant, Carer's Benefit and Orphan's (Contributory) Allowance	961	100	1,061	891	89	980
D	Widow/er's (Contributory) Pensions, Orphan's (Contributory) Allowance, Bereavement Grant, Carer's Benefit and Occupational Injuries Benefits	47,100	56,458	103,558	44,006	50,968	94,974
E	All benefits except Unemployment Benefit, Bereavement Grant and Occupational Injuries Benefits	140	14	154	133	17	150
H	All benefits on discharge. Treatment Benefit, Bereavement Grant, Carer's Benefit and Widow/er's (Contributory) Pension (in certain cases) during service	8,371	425	8,796	8,292	435	8,727
J⁽⁴⁾	Occupational Injuries Benefits	7,159	10,808	17,967	7,219	10,291	17,510
K	No Social Insurance benefits. Class K consists of the Health Contribution	33,158	12,118	45,276	25,324	9,665	34,989
M	Occupational Injuries Benefits in certain circumstances	67,573	57,284	124,857	81,906	62,109	144,015
P	Treatment Benefit and limited Unemployment and Disability Benefits	13	-	13	12	-	12
S^(2,5)	Widow/er's (Contributory) Pensions, Orphan's (Contributory) Allowance, Old Age (Contributory) Pension, Bereavement Grant, Maternity Benefit and Adoptive Benefit.	201,761	42,520	244,281	226,289	66,921	293,210
Voluntary Contributors	High Rate: Retirement Pension, Old Age (Contributory) Pension, Orphan's (Contributory) Allowance and Death Grant	1,232	489	1,721	1,075	480	1,555
	Low Rate: Widow/er's (Contributory) Pensions, Orphan's (Contributory) Allowance and Death Grant						
	Total	1,337,369	1,072,896	2,410,265	1,400,070	1,134,848	2,534,918

(1) Revised figures.

(2) Provisional figures.

(3) This includes 154,478 and 160,941 persons in 2001 (short tax year) and 2002 respectively, in receipt of credited contributions.

(4) Class J includes FAS and other trainees.

(5) Source: Revenue Commissioners

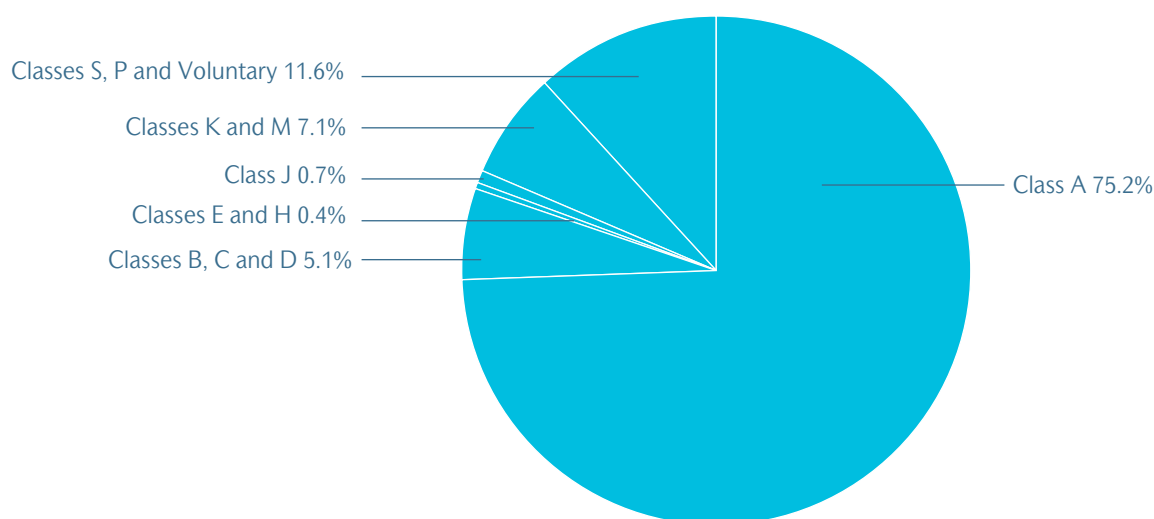
Table A16

Number of Insured Persons, 1994/95 to 2002

Year	Insured Population	Index
1994/95	1,769,920	100
1995/96	1,858,492	105.0
1996/97	1,925,453	108.8
1997/98	2,037,647	115.1
1998/99	2,200,399	124.3
1999/2000	2,310,525	130.5
2000/2001	2,417,231	136.6
2001 ⁽¹⁾⁽²⁾	2,410,265	136.2
2002 ⁽³⁾	2,534,918	143.2

(1) Revised.
 (2) Short-Tax Year
 (3) Provisional

Graph A8



Analysis of Insured Population, 2002 (Short Tax Year)

Table A17

Social Welfare Weekly Rates of Payment from January 2003

Type of Payment	Qualified		
	Personal	Adult	Child
	€	€	€
SOCIAL INSURANCE			
Long Term			
Old Age (Contributory) Pension / Retirement Pension ⁽¹⁾	157.30	104.80	19.30
Invalidity Pension ⁽²⁾	130.30	93.00	19.30
Widow/er's (Contributory) Pension / Deserted Wife's Benefit ⁽³⁾	130.30	-	21.60
Orphan's (Contributory) Allowance	97.00	-	-
Death Benefit Pension	153.60	-	21.60
Disablement Pension	155.90	-	-
Short Term			
Disability / Unemployment Benefit	124.80	82.80	16.80
Carer's Benefit	139.70	-	16.80
SOCIAL ASSISTANCE			
Long Term			
Old Age (Non-Contributory) Pension	144.00	95.20	16.80
Widow's (Non-Contributory) Pension ⁽⁴⁾	124.80	-	-
Deserted / Prisoner's Wife's Allowance ⁽⁴⁾	124.80	-	-
One-Parent Family Payment ⁽⁴⁾	124.80	-	19.30
Orphan's (Non-Contributory) Pension	97.00	-	-
Carer's Allowance ⁽⁵⁾	129.60	-	16.80
Long Term Unemployment Assistance	124.80	82.80	16.80
Pre-Retirement Allowance	124.80	82.80	16.80
Disability Allowance	124.80	82.80	16.80
Farm Assist	124.80	82.80	16.80
Short Term			
Short Term Unemployment Assistance	124.80	82.80	16.80
Supplementary Welfare Allowance	124.80	82.80	16.80
OTHER PAYMENTS			
Island Allowance	12.70	-	-
Living Alone Allowance	7.70	-	-
Over 80 Allowance	6.40	-	-
Child Benefit ⁽⁶⁾ (monthly) - 1st & 2nd Child	125.60	-	-
- 3rd & other Children	157.30	-	-

(1) If Qualified Adult is 66 years or over a rate of 121.50 Euro is payable.

(2) If Invalidity Pensioner is 65 or over a rate of 157.30 Euro is payable.

(3) If Recipient is aged 66 or over a rate of 155.80 Euro is payable.

(4) If Recipient is aged 66 or over a rate of 144.00 Euro is payable.

(5) Where Recipient is aged 66 or over a rate of 147.80 Euro is payable.

(6) These rates apply from April 2003.

Table A18

Social Welfare Weekly Rates of Payment from January 2004

Type of Payment	Qualified		
	Personal	Adult	Child
	€	€	€
SOCIAL INSURANCE			
Long Term			
Old Age (Contributory) Pension / Retirement Pension ⁽¹⁾	167.30	111.50	19.30
Invalidity Pension ⁽²⁾	140.30	100.10	19.30
Widow/er's (Contributory) Pension / Deserted Wife's Benefit ⁽³⁾	140.30	-	21.60
Orphan's (Contributory) Allowance	107.00	-	-
Death Benefit Pension	163.60	-	-
Disablement Pension	165.90	-	-
Short Term			
Disability / Unemployment Benefit	134.80	89.40	16.80
Carer's Benefit	149.70	-	16.80
SOCIAL ASSISTANCE			
Long Term			
Old Age (Non-Contributory) Pension	154.00	101.80	16.80
Widow's (Non-Contributory) Pension ⁽⁴⁾	134.80	-	-
Deserted/Prisoner's Wife's Allowance ⁽⁴⁾	134.80	-	-
One-Parent Family Payment ⁽⁴⁾	134.80	-	-
Orphan's (Non-Contributory) Pension	107.00	-	-
Carer's Allowance ⁽⁵⁾	139.60	-	-
Long Term Unemployment Assistance	134.80	89.40	16.80
Pre-Retirement Allowance	134.80	89.40	16.80
Disability Allowance	134.80	89.40	16.80
Farm Assist	134.80	89.40	16.80
Short Term			
Short Term Unemployment Assistance	134.80	89.40	16.80
Supplementary Welfare Allowance	134.80	89.40	16.80
OTHER PAYMENTS			
Island Allowance	12.70	-	-
Living Alone Allowance	7.70	-	-
Over 80 Allowance	6.40	-	-
Child Benefit ⁽⁶⁾ (monthly)			
- 1st & 2nd Child	125.60	-	-
- 3rd & other Children	157.30	-	-

(1) If Qualified Adult is 66 years or over a rate of 129.20 Euro is payable.

(2) If Invalidity Pensioner is 65 or over a rate of 167.30 Euro is payable.

(3) If Recipient is aged 66 or over a rate of 167.30 Euro is payable.

(4) If Recipient is aged 66 or over a rate of 154.00 Euro is payable.

(5) Where Recipient is aged 66 or over a rate of 157.80 Euro is payable.

(6) These rates apply from April 2004.

Table A19

Index of Short-Term Rates of Payment, Consumer Price Index and Average Industrial Earnings, 1994 to 2003

Year	Single Person	Couple	Couple with 2 children Including Child Benefit	Couple with 4 children Including Child Benefit	Consumer Price Index ⁽¹⁾	Gross Average Industrial Earnings ⁽²⁾
1994	100.0	100.0	100.0	100.0	100.0	100.0
1995	102.5	102.5	104.2	105.9	102.7	102.2
1996	105.7	105.5	107.2	108.7	104.4	105.0
1997	110.7	110.1	110.9	113.0	106.0	107.8
1998	115.6	114.4	114.6	116.7	108.5	112.7
1999	120.5	119.6	119.4	121.6	110.3	124.9
2000	127.0	127.6	128.0	131.0	116.5	133.1
2001	140.2	142.9	147.9	154.8	122.2	143.7
2002	153.4	159.4	168.8	179.3	127.8	153.1
2003	161.1	167.5	176.9	187.8	132.2	164.3

(1) Rebased from data published by the Central Statistics Office.

Note: Based on the rates of Unemployment Benefit and Disability Benefit.

Table A20

Index of Long-Term Rates of Payment, Consumer Price Index and Average Industrial Earnings, 1994 to 2003

Year	Single Person	Couple	Couple with 2 children Including Child Benefit	Couple with 4 children Including Child Benefit	Consumer Price Index ⁽¹⁾	Gross Average Industrial Earnings ⁽¹⁾
1994	100.0	100.0	100.0	100.0	100.0	100.0
1995	102.5	104.0	105.1	106.3	102.7	102.2
1996	105.6	107.1	108.0	109.0	104.4	105.0
1997	109.9	111.0	111.2	112.7	106.0	107.8
1998	116.9	116.6	115.8	117.1	108.5	112.7
1999	125.4	124.4	122.5	123.3	110.3	124.9
2000	135.2	134.4	132.3	133.5	116.5	133.1
2001	149.3	149.9	151.3	155.6	122.2	143.7
2002	163.4	166.3	171.0	178.2	127.8	153.1
2003	174.5	177.6	181.3	188.2	132.2	164.3

(1) Rebased from data published by the Central Statistics Office.

Note: Based on the rates of Old Age (Contributory) Pension.

Table A21

Index of Rates of Payment for the Long-Term Unemployed, Consumer Price Index and Average Industrial Earnings, 1994 to 2003

Year	Single Person	Couple	Couple with 2 children Including Child Benefit	Couple with 4 children Including Child Benefit	Consumer Price Index ⁽¹⁾	Gross Average Industrial Earnings ⁽¹⁾
1994	100.0	100.0	100.0	100.0	100.0	100.0
1995	105.6	105.6	107.2	109.1	63.0	129.8
1996	109.0	108.8	110.2	112.0	64.0	133.3
1997	114.0	113.5	114.1	116.4	65.0	136.9
1998	119.1	118.0	117.8	120.2	66.6	143.1
1999	124.2	123.2	122.8	125.2	67.7	158.6
2000	130.9	131.5	131.6	135.0	71.5	169.1
2001	144.4	147.3	152.1	159.4	75.0	182.5
2002	158.0	164.3	173.6	184.7	78.4	194.5
2003	161.1	167.5	176.9	187.8	132.2	164.3

(1) Rebased from data published by the Central Statistics Office.

Note: Based on the rates of Long-Term Unemployment Assistance.



Section B

old age

Section B: Old Age

Expenditure and Recipients

Expenditure on Old Age payments was over €2,499 million in 2003. This represents an increase of 8.9 % on 2002.

The overall number of Old Age payments rose by 10,774 in 2003, an increase of 3.7%. The number of people in receipt of a contributory pension (Old Age Contributory Pension and Retirement Pension) based on social insurance contributions rose by 12,129 while the number of people in receipt of the means tested Old Age (Non-Contributory) Pension fell by 1,090. The number of persons in receipt of Pre-Retirement Allowance fell by 265 in 2003.

Over the last ten years, the number of recipients of Old Age (Contributory) Pension rose by 43,150 and the number of recipients of Old Age (Non-Contributory) Pension fell by 21,568. The number of recipients of Retirement Pension increased by 24,298, and the number of recipients of Pre-Retirement Allowance has fallen by 4,327 in the same period. See Table B3 and Graph B1 for details.

Graph B1

Number of Recipients of Old Age Pensions, 1994 to 2003

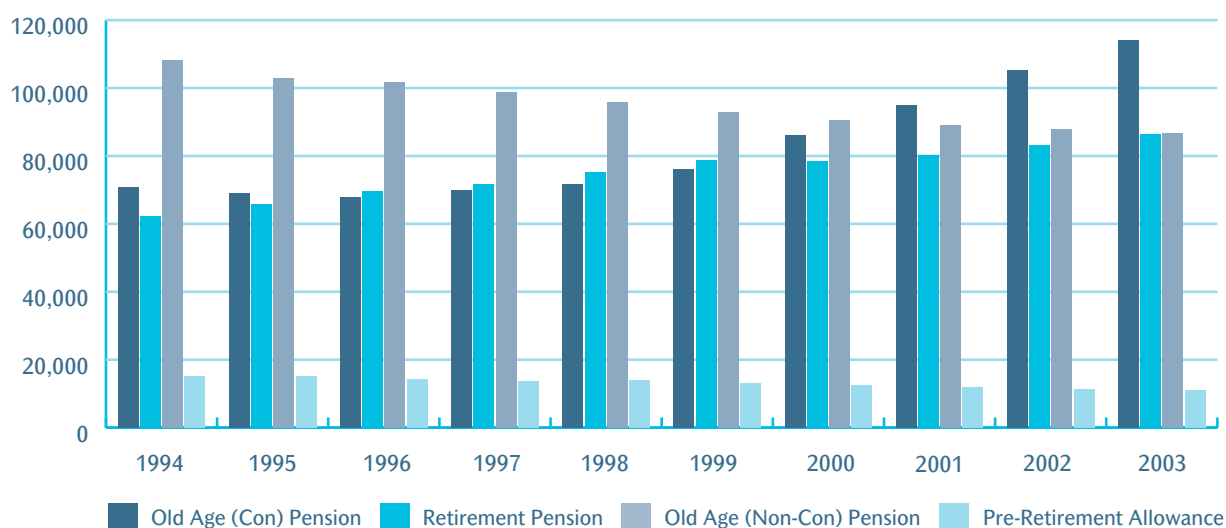


Table B1

Expenditure on Old Age by Payment Type, 2002 and 2003

Payment Type	2002	2003 Provisional	Change 2003 over 2002
	€000	€000	%
SOCIAL INSURANCE			
Old Age (Contributory) Pension	868,529	946,903	9.0%
Retirement Pension	803,413	898,981	11.9%
SOCIAL ASSISTANCE			
Old Age (Non-Contributory) Pension	537,308	565,006	5.2%
Pre-Retirement Allowance	87,028	89,077	2.4%
Total	2,296,278	2,499,967	8.9%

Table B2

Expenditure on Old Age by Pension Type, 1994 to 2003

Year	Old Age (Contributory) Pension	Retirement Pension	Old Age (Non-Contributory) Pension ⁽¹⁾	Pre-Retirement Allowance	Total
	€000	€000	€000	€000	€000
1994	399,962	325,218	405,143	74,795	1,205,119
1995	402,394	355,899	392,030	72,696	1,223,019
1996	406,637	388,130	393,992	73,732	1,262,492
1997	412,643	426,854	402,247	72,878	1,314,622
1998	460,995	463,489	424,586	76,428	1,425,498
1999	498,084	511,543	439,359	76,506	1,525,491
2000	577,365	594,239	456,230	79,252	1,707,086
2001	716,474	697,349	490,718	82,774	1,987,315
2002	868,529	803,413	537,308	87,028	2,296,278
2003 ⁽²⁾	946,903	898,981	565,006	89,077	2,499,967

(1) Includes expenditure on Blind Pension up to and including 1994. This expenditure is now included in the Illness, Disability and Caring Section.

(2) Provisional.

Table B3

Number of Recipients by Type of Old Age Pension, 1994 to 2003

Year	Old Age (Contributory) Pension	Retirement Pension	Old Age (Non-Contributory) Pension	Pre-Retirement Allowance	Total
1994	70,820	62,211	108,301	15,284	256,616
1995	69,179	65,761	102,984	15,023	252,947
1996	67,988	69,740	101,624	14,151	253,503
1997	70,022	71,793	98,835	13,647	254,297
1998	71,706	75,316	95,890	13,897	256,809
1999	76,241	78,868	93,023	13,149	261,281
2000	86,217	78,370	90,652	12,521	267,760
2001	94,871	80,326	89,061	11,807	276,065
2002	105,295	83,055	87,823	11,222	287,395
2003	113,970	86,509	86,733	10,957	298,169

Table B4

Number of Recipients of Old Age Pensions by Type of Pension, and Number of Qualified Adults and Children, 2003

Dependency Status	Old Age (Contributory) Pension	Retirement Pension	Old Age (Non-Contributory) Pension ⁽¹⁾	Pre-Retirement Allowance ⁽¹⁾	Total
Personal Rate only	86,536	60,312	82,792	7,186	236,826
With Qualified Adult under 66	10,016	11,252	3,779	3,766	58,324
With Qualified Adult over 66	15,486	14,025			
1 full rate Qualified Child	683	741	307	577	2,308
2 full rate Qualified Children	146	115	77	195	533
3 full rate Qualified Children	33	32	21	81	167
4 full rate Qualified Children	15	14	11	21	61
5 full rate Qualified Children	2	2	3	18	25
6+full rate Qualified Children	2	-	1	9	12
1 half rate Qualified Child	399	294	94	111	898
2 half rate Qualified Children	132	57	20	39	248
3 half rate Qualified Children	27	14	4	5	50
4 half rate Qualified Children	6	5	1	4	16
5 half rate Qualified Children	2	-	-	-	2
6+ half rate Qualified Children	-	1	-	-	1
Recipients with Qualified Child allowances	1,447	1,275	539	1,060	4,321
Percentage of recipients with Qualified Child Allowances	1.4%	1.5%	0.6%	9.4%	1.6%
Total Number of Qualified Adults	25,502	25,277	3,779	3,766	58,324
Total Number of Children(2)	1,156	1,609	589	1,438	4,792

(1) An age breakdown for Qualified Adults is not available.

(2) A Qualified Child increase is payable at half rate where a spouse living with the recipient is not a Qualified Adult. Each spouse may receive half the Qualified Child increase where both spouses are in receipt of a Social Welfare payment. This can result in some double counting of the actual number of Qualified Children.

Table B5

Number of Recipients of Old Age Pensions by Type of Pension, Age and Sex, 2003 (Estimated)

Age Group	Old Age (Contributory) Pension		Retirement Pension		Old Age (Non-Contributory) Pension		Total	
	Males	Females	Males	Females	Males	Females	Males	Females
Under 70 years	21,371	10,517	23,826	8,325	6,296	8,694	51,493	27,536
70 to 74 years	23,010	11,950	20,265	7,372	8,891	11,703	52,166	31,025
75 to 79 years	14,022	8,767	11,708	4,511	9,378	11,369	35,108	24,647
80 to 84 years	8,734	6,340	5,434	2,079	7,174	9,157	21,342	17,576
85 years and over	4,779	4,480	1,919	1,070	4,864	9,207	11,562	14,757
Total	71,916	42,054	63,152	23,357	36,603	50,130	171,671	115,541
OVERALL TOTAL	113,970		86,509		86,733		287,212	

Table B6

Number of Recipients of Pre-Retirement Allowance by Age and Sex, 2003 (Estimated)

Age	Male	Female	Total
55	120	40	160
56	518	133	651
57	569	166	735
58	675	217	892
59	792	237	1,029
60	978	262	1,240
61	919	225	1,144
62	1,035	236	1,271
63	923	236	1,159
64	1,073	207	1,280
65	1,109	287	1,396
Total	8,711	2,246	10,957

Table B7

Number of Recipients of Living Alone Allowance, Over 80 Allowance and Island Allowance by Pension Type, 2003 (Estimated)

Pension Type	Living Alone Allowance	Over 80 Allowance	Island Allowance
Old Age (Contributory) Pension	26,890	24,333	45
Retirement Pension	19,269	10,502	69
Old Age (Non-Contributory) Pension	25,086	30,402	231
Total	71,245	65,237	345

Table B8

Number of Recipients of Old Age Pensions by Type of Pension and County, 2003 (Estimated)

County	Old Age (Contributory) Pension	Retirement Pension	Old Age (Non-Contributory) Pension	Pre-Retirement Allowance
Carlow	1,009	1,024	1,073	158
Cavan	1,201	918	2,645	166
Clare	1,913	1,533	3,553	298
Cork	10,341	9,838	9,806	1,134
Donegal	2,121	2,850	5,328	1,036
Dublin	30,155	28,948	9,560	2,572
Galway	3,660	3,209	7,009	526
Kerry	2,678	2,181	4,977	437
Kildare	2,502	2,294	1,539	221
Kilkenny	1,602	1,402	2,097	205
Laois	1,209	948	1,534	170
Leitrim	596	651	1,296	67
Limerick	3,880	3,641	4,002	490
Longford	722	563	1,372	87
Louth	2,563	2,787	1,898	346
Mayo	2,127	2,495	5,396	426
Meath	2,583	1,960	2,182	282
Monaghan	1,052	930	2,076	141
Offaly	1,374	1,201	1,604	151
Roscommon	1,222	932	2,441	100
Sligo	1,232	1,205	2,027	125
Tipperary	3,686	2,676	4,603	463
Waterford	2,239	2,592	2,134	393
Westmeath	1,659	1,370	1,708	119
Wexford	2,676	2,482	3,146	578
Wicklow	2,630	2,399	1,663	266
Others	25,338	3,480	64	-
Total	113,970	86,509	86,733	10,957



Section C

widows, widowers and one-parent families

Section C: Widows, Widowers and One-Parent Families

Expenditure and Recipients

Expenditure on Widows, Widowers and One Parent Families increased by 7.2% overall in 2003.

The payment in this programme group with both the largest expenditure and number of recipients is Widow's and Widower's (Contributory) Pension. At the end of 2003, there were 103,831 recipients (92,617 widows and 11,214 widowers). Expenditure in 2003 was over €826 million which represented an increase of 8.5% over 2002.

The number of recipients of Deserted Wife's Benefit and Deserted Wife's Allowance declined during 2003. This arises as a result of the discontinuation of these payments for new claimants with effect from January 1997. One Parent Family Payment replaced these payments, Prisoners Wife's Allowance and Lone Parent's Allowance from that date.

30

Expenditure on One-Parent Family Payment increased by 7.8%, while the number of recipients rose by 101.

Graph C1

Number of Recipients of One-Parent Family Payment by Age and Sex, 2003

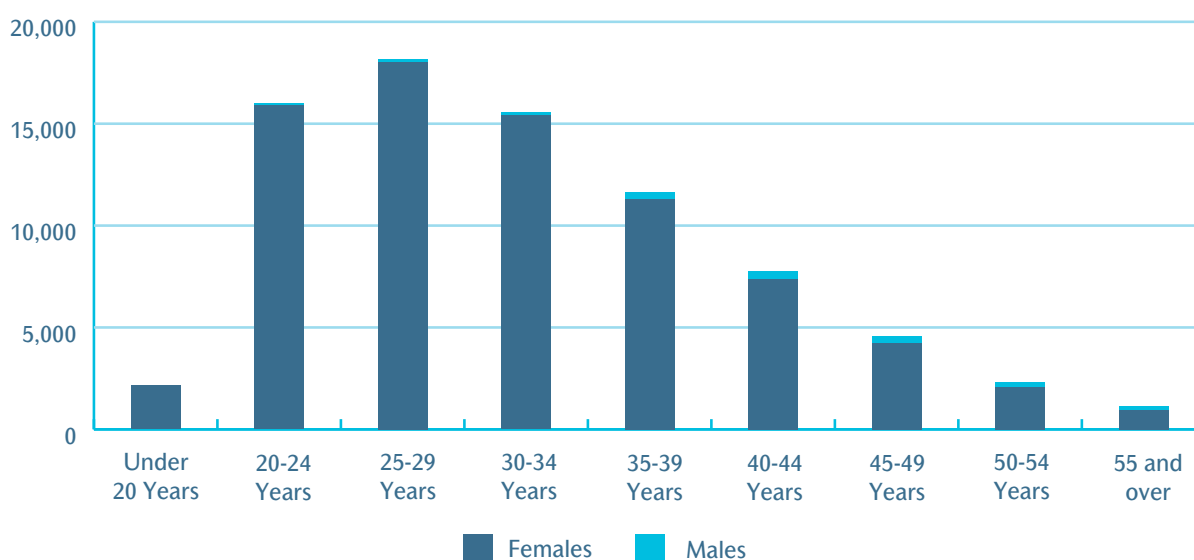


Table C1

Expenditure on Widows, Widowers and One-Parent Families by Payment Type, 2002 and 2003

Payment Type	2002	2003 Provisional	Change 2003 over 2002
	€000	€000	%
SOCIAL INSURANCE			
Widow/er's (Contributory) Pension	761,539	826,135	8.5%
Deserted Wife's Benefit ⁽¹⁾	88,150	89,235	1.2%
Widowed Parent Grant (Contributory)	2,971	2,867	-3.5%
SOCIAL ASSISTANCE			
Widow/er's (Non-Contributory) Pension	116,493	116,834	0.3%
Deserted Wife's Allowance ⁽¹⁾	10,238	10,605	3.6%
Prisoner's Wife's Allowance ⁽¹⁾	12	13	8.3%
One-Parent Family Payment ⁽¹⁾	613,035	660,586	7.8%
Widowed Parent Grant (Non-Contributory)	113	290	156.6%
Total	1,592,551	1,706,565	7.2%

(1) Lone Parent's Allowance, Deserted Wife's Allowance, Deserted Wife's Benefit and Prisoners Wife's Allowance were discontinued for new claimants from the end of December 1996. A new unified payment, One-Parent Family Payment, was introduced in January 1997 for all parents who are bringing up children on their own.

Table C2

Expenditure on Widow/er's Pensions, 1994 to 2003

Year	Widow/er's (Contributory) Pension ⁽¹⁾	Widow/er's (Non-Contributory) Pension ⁽²⁾	Total
	€000	€000	€000
1994	388,840	71,752	460,591
1995	434,446	73,862	508,308
1996	457,036	77,159	534,195
1997	478,894	79,418	558,313
1998	517,455	84,133	601,588
1999	547,775	88,364	636,139
2000	597,473	94,377	691,850
2001	672,959	107,164	780,123
2002	761,539	116,493	878,032
2003 ⁽³⁾	826,135	116,834	942,969

(1) Payment was extended in October 1994 to include widowed men.

(2) Payment was extended in October 1997 to include widowed men.
Expenditure on Orphan's Non-Contributory Pension is included up to and including 1994.
Data on expenditure on this scheme from 1995 to date is contained in Section D.

(3) Provisional.

Table C3

Expenditure on Deserted Wife's Benefit, Deserted Wife's Allowance, Prisoners Wife's Allowance and Lone Parent's/One-Parent Family Payment, 1994 to 2003

Year	Deserted Wife's Benefit	Deserted Wife's Allowance	Prisoners Wife's Allowance	Lone Parent's Allowance/One-Parent Family Payment ⁽¹⁾	Total
	€000	€000	€000	€000	€000
1994	83,592	8,074	25	216,481	308,173
1995	88,998	8,470	33	246,663	344,165
1996	92,884	8,825	28	277,086	378,823
1997 ⁽²⁾	94,336	8,848	23	338,530	441,737
1998	88,592	8,483	19	389,859	486,953
1999	85,983	8,359	19	435,177	529,538
2000	83,921	8,394	15	480,113	572,443
2001	84,877	9,179	13	537,376	631,445
2002	88,150	10,238	12	613,035	711,435
2003 ⁽³⁾	89,235	10,605	13	660,586	760,439

(1) Lone Parent's Allowance was introduced in November 1990 and discontinued in December 1996.

(2) One-Parent Family Payments was introduced in January, 1997.

(3) Provisional.

Table C4

Number of Recipients of Widow/er's Pensions 1994 to 2003

Year	Widow/er's (Contributory) Pension ⁽¹⁾	Widow/er's (Non-Contributory) Pension ⁽²⁾	Total
1994	90,671	19,043	109,714
1995	94,713	19,108	113,821
1996	96,107	19,046	115,153
1997	97,340	18,786	116,126
1998	98,518	18,382	116,900
1999	99,771	17,978	117,749
2000	100,374	17,367	117,741
2001	101,267	16,811	118,078
2002	102,494	16,318	118,812
2003	103,831	15,783	119,614

(1) Payment was extended in October 1994 to include both widowed men and women.

(2) Payment was extended, in October 1997 to include both widowed men and women.

Table C5

Number of Recipients of Widow/er's (Contributory) Pension and Deserted Wife's Benefit by Number of Qualified Children, 2003

Type of Recipient	Widow/er's (Contributory) Pension	Deserted Wife's Benefit	Total
Without Qualified Children	95,144	6,811	101,955
With 1 child	4,883	2,503	7,386
With 2 children	2,395	1,324	3,719
With 3 children	982	455	1,437
With 4 children	320	181	501
With 5 children	78	43	121
With 6 or more children	29	22	51
Total Recipients	103,831	11,339	115,170
Total Recipients with children	8,687	4,528	13,215
% of Recipients with children	8.4%	39.9%	11.5%
Total Number of children	14,478	7,593	22,071

Table C6

Number of Recipients of Widow/er's Pensions by Age and Sex, 2003 (Estimated)

Age	Contributory Pensions			Non-Contributory Pensions			Overall Total
	Widows	Widowers	Total	Widows	Widowers	Total	
Under 25 years	5	2	7	-	-	-	7
25 to 29 years	44	8	52	1	-	1	53
30 to 34 years	220	45	265	2	-	2	267
35 to 39 years	600	172	772	7	1	8	780
40 to 44 years	1,307	416	1,723	40	8	48	1,771
45 to 49 years	2,287	782	3,069	86	16	102	3,171
50 to 54 years	3,901	1,306	5,207	238	30	268	5,475
55 to 59 years	6,525	2,008	8,533	576	54	630	9,163
60 to 64 years	9,255	2,290	11,545	1,030	70	1,100	12,645
65 to 69 years	12,117	1,515	13,632	1,821	52	1,873	15,505
70 to 74 years	14,646	1,000	15,646	2,665	33	2,698	18,344
75 to 79 years	16,299	748	17,047	3,417	7	3,424	20,471
80 years and over	25,411	922	26,333	5,618	11	5,629	31,962
Total	92,617	11,214	103,831	15,501	282	15,783	119,614

Table C7

Number of Recipients of Deserted Wife's Benefit, Deserted Wife's Allowance, Prisoner's Wife's Allowance, Lone Parent's Allowance and One-Parent Family Payment, 1994 to 2003

Year	Deserted Wife's Benefit	Deserted Wife's Allowance	Prisoner's Wife's Allowance	Lone Parent's Allowance	One-Parent Family Payment ⁽¹⁾	Total
1994	13,662	2,095	8	40,700	-	56,465
1995	14,284	2,125	7	45,779	-	62,195
1996	14,738	2,138	8	50,557	-	67,441
1997	14,387	1,960	5	-	58,960	75,312
1998	13,835	1,807	4	-	65,548	81,194
1999	13,242	1,709	4	-	70,387	85,342
2000	12,654	1,613	3	-	74,119	88,389
2001	12,177	1,612	2	-	77,142	90,933
2002	11,794	1,582	2	-	79,195	92,573
2003	11,339	1,523	2	-	79,296 ⁽²⁾	92,160

(1) Lone Parent's Allowance, Deserted Wife's Allowance, Deserted Wife's Benefit and Prisoner's Wife's Allowance were discontinued for new claimants from the end of December 1996. A new unified payment, One-Parent Family Payment, was introduced in January 1997 for all parents who are bringing up children on their own.

(2) The increase in One Parent Family Payment has been partially offset by increased control activity.

Table C8

Number of Recipients of Deserted Wife's Benefit, Deserted Wife's Allowance and Prisoner's Wife's Allowance, by Age, 2003 (Estimated)

Age	Deserted Wife's Benefit	Deserted Wife's Allowance	Prisoner's Wife's Allowance
Under 25 years	-	-	-
25 to 29 years	2	-	-
30 to 34 years	90	-	-
35 to 39 years	638	-	-
40 to 44 years	1,722	21	-
45 to 49 years	2,376	78	-
50 to 54 years	2,565	199	1
55 to 59 years	1,969	325	1
60 to 64 years	1,133	330	-
65 years and over	844	570	-
Total	11,339	1,523	2

Table C9

Number of Recipients of One-Parent Family Payment by Status of Parent and Number of Qualified Children, 2003 (Estimated)

Type of Recipient	Unmarried Parent, Separated Parent, Prisoner's Spouse	Widowed Person	Total
With 1 child	47,242	540	47,782
With 2 children	19,565	274	19,839
With 3 children	7,400	144	7,544
With 4 children	2,683	58	2,741
With 5 children	844	29	873
With 6 or more children	384	18	402
Total Recipients	78,118	1,063	79,181
Total Number of Children	126,040	2,011	128,051

(1) There are 115 recipients of One Parent Family Payment who are not in receipt of a Qualified Child Increase. This occurs where their Child now qualifies for a Social Welfare payment in their own right.

Table C10

Number of Recipients of One-Parent Family Payment by Status of Parent, Age and Sex, 2003 (Estimated)

Age Group	Unmarried Parent, Separated Parent, Prisoner's Spouse		Widowed Person		Total	
	Males	Females	Males	Females	Males	Females
Under 20 years	13	2,156	-	-	13	2,156
20 to 24 years	107	15,888	-	3	107	15,891
25 to 29 years	100	18,011	1	18	101	18,029
30 to 34 years	176	15,333	10	73	186	15,406
35 to 39 years	308	11,210	14	105	322	11,315
40 to 44 years	330	7,253	25	129	355	7,382
45 to 49 years	279	4,115	41	131	320	4,246
50 to 54 years	202	1,916	41	168	243	2,084
55 to 59 years	85	613	25	165	110	778
60 to 64 years	33	82	20	63	53	145
65 years and over	10	4	17	23	27	27
Total	1,643	76,581	194	878	1,837	77,459
OVERALL TOTAL	78,224		1,072		79,296	

Table C11

Number of Recipients of Widow/er's Pensions, Deserted Wife's Benefit and Deserted Wife's Allowance in Receipt of Living Alone Allowance, Over 80 Allowance, and Island Allowance, 2003

Pension Type	Living Alone Allowance	Over 80 Allowance	Island Allowance
Widow/er's (Con) Pension	40,638	26,503	56
Deserted Wife's Benefit	347	52	-
Widow/er's (Non-Con) Pension	7,168	5,664	30
Deserted Wife's Allowance	233	89	1
Total	48,386	32,308	87

Table C12

Number of Recipients of Widow's, Widower's and One-Parent Family Payments by Payment Type and County, 2002 (Estimated)

County	Widow/er's (Con) Pension	Widow/er's (Non-Con) Pension	One-Parent Family Payment	Deserted Wife's Benefit	Deserted Wife's Allowance	Prisoner's Wife's Allowance
Carlow	1,181	176	1,158	126	16	-
Cavan	1,366	601	813	71	14	-
Clare	2,133	722	1,626	194	43	-
Cork	11,505	1,693	8,130	1,063	128	-
Donegal	3,112	887	3,098	225	82	-
Dublin	27,990	1,460	27,374	4,814	470	-
Galway	4,342	1,476	3,286	346	85	-
Kerry	3,221	866	2,148	252	68	1
Kildare	3,308	284	2,939	421	43	-
Kilkenny	1,734	315	1,118	170	27	-
Laois	1,340	314	898	85	13	-
Leitrim	882	257	283	45	6	-
Limerick	4,568	721	3,687	503	59	-
Longford	893	318	703	87	8	-
Louth	2,660	252	2,847	438	34	-
Mayo	3,190	972	1,684	167	53	1
Meath	2,666	395	1,896	324	57	-
Monaghan	1,176	460	843	106	27	-
Offaly	1,598	333	1,120	120	14	-
Roscommon	1,272	492	568	77	18	-
Sligo	1,531	406	935	187	14	-
Tipperary	3,953	858	2,589	308	44	-
Waterford	2,765	284	2,481	294	40	-
Westmeath	1,989	426	1,450	191	28	-
Wexford	2,982	532	3,032	311	73	-
Wicklow	2,697	283	2,548	414	59	-
Others	7,777	-	42	-	-	-
Total	103,831	15,783	79,296	11,339	1,523	2



Section D

child related payments

Section D: Child Related Payments

Expenditure and Recipients

This section relates to payments made in respect of children such as Child Benefit, Orphan’s Pensions, and Maternity related payments. For ease of reference, this section also gives details of increases in respect of qualified children which are payable with social welfare payments (See Table D10). It should be noted, however, that for the purpose of apportioning expenditure between programmes, the cost of qualified child increases are included with the main payment e.g. Qualified Child increases paid with Old Age pensions are included in the ‘Old Age’ programme.

Expenditure on payments in this programme group rose by 13.3% in 2003. The breakdown of Child Benefit by family size shows that 75.4% of recipient families in 2003 have either one or two children. The equivalent percentage for 1994 was 67.2%. See Table D8 and Graph D1. The number of families receiving Child Benefit rose by 11,568 to 534,009. The total number of children in respect of whom Child Benefit is paid increased by 15,300 to 1,034,551.

38

Expenditure on Child Benefit increased by €203.7 million in 2003, an increase of 13.9% while Maternity Benefit expenditure increased by over €8.2 million, an increase of 8.3%.

Graph D1

Number of Families Receiving Child Benefit by Number of Child Beneficiaries, 1995 to 2003

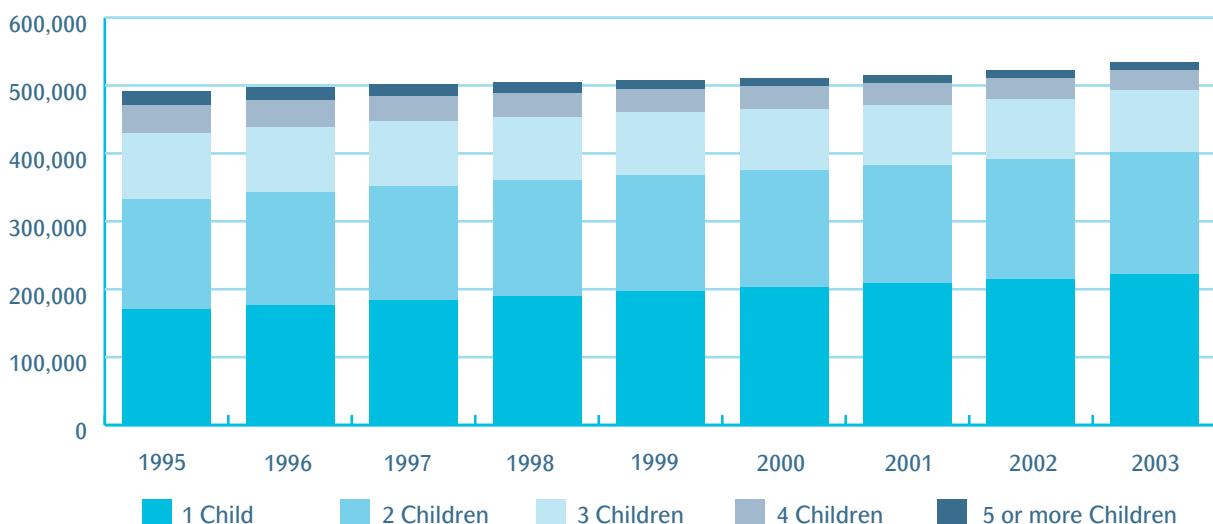


Table D1

Expenditure on Child Related Payments by Payment Type, 2002 and 2003

Payment Type	2002	2003	Change 2003
	€000	Provisional €000	over 2002 %
SOCIAL INSURANCE			
Maternity Benefit	99,129	107,330	8.3%
Adoptive Benefit	578	532	-8.0%
Health and Safety Benefit	217	213	-1.8%
Orphan's (Contributory) Allowance	11,694	8,895	-23.9%
SOCIAL ASSISTANCE			
Orphan's (Non-Contributory) Pension	4,494	5,805	29.2%
OTHER			
Child Benefit	1,462,793	1,666,530	13.9%
Total	1,578,905	1,789,305	13.3%

Table D2

Expenditure on Child Benefit, 1994 to 2003

Year	Expenditure
	€000
1994	337,076
1995	382,124
1996	477,404
1997	505,787
1998	531,728
1999	565,013
2000	637,543
2001	964,847
2002	1,462,793
2003 ⁽¹⁾	1,666,530

(1) Provisional.

Table D3

Expenditure on Orphan's (Contributory) Allowance and Orphans (Non-Contributory) Pension, 1994 to 2003

Year	Orphan's (Contributory) Allowance	Orphan's (Non-Contributory) Pension ⁽¹⁾
	€000	€000
1994	1,931	-
1995	2,203	759
1996	2,367	924
1997	2,630	1,087
1998	2,981	1,347
1999	3,765	1,804
2000	5,617	2,896
2001	9,447	4,421
2002	11,694	4,494
2003 ⁽²⁾	8,895	5,805

(1) Prior to 1995 Orphan's (Non-Contributory) Pension expenditure was calculated as part of Widow's (Non-Contributory) Pension.

(2) Provisional

Table D4

Expenditure on Maternity, Adoptive and Health & Safety Benefits, 1994 to 2003

Year	Maternity Benefit	Adoptive Benefit ⁽¹⁾	Health & Safety Benefit ⁽²⁾
	€000	€000	€000
1994	30,922	-	-
1995	34,630	77	67
1996	37,888	69	113
1997	43,245	103	157
1998	48,514	151	113
1999	52,733	211	164
2000	58,041	185	171
2001	78,933	260	210
2002	99,129	578	217
2003 ⁽³⁾	107,330	532	213

(1) Adoptive Benefit was introduced in April 1995.

(2) Health & Safety Benefit was introduced in October 1994.

(3) Provisional.

Table D5

Number of Recipients of Orphan's Pensions, 2002 and 2003

Payment	2002	2003	% Change 2003 over 2002
Orphan's (Contributory) Allowance	1,680	967	-42.4%
Orphan's (Non-Contributory) Pension	1,328	580	-56.3%
Total	3,008	1,547	-48.6%

Table D6

Number of Recipients of Maternity Benefit, Health and Safety Benefit and Adoptive Benefit, 2002 and 2003

Payment	2002	2003	% Change 2003 over 2002
Recipients at 31st December:			
Maternity Benefit	9,603	10,594	10.3%
Health and Safety Benefit	32	12	-62.5%
Adoptive Benefit	53	33	-37.7%
Awards during the year:			
Maternity Benefit	29,042	30,211	4.0%
Health and Safety Benefit	134	122	-9.0%
Adoptive Benefit	215	183	-14.9%

Table D7

Number of Families and Child Beneficiaries of Child Benefit, 1994 to 2003

Year	Families	Children
1994	482,592	1,055,156
1995	491,520	1,065,471
1996	497,252	1,060,496
1997	502,318	1,053,401
1998	504,811	1,039,746
1999	508,504	1,028,877
2000	510,840	1,018,175
2001	514,919	1,014,340
2002	522,441	1,019,551
2003	534,009	1,034,851

Table D8

Families Receiving Child Benefit by Number of Children

Number of Eligible Children in Family	1995	1996	1997	1998	1999	2000	2001	2002	2003
1	169,625	176,126	183,271	190,083	197,457	203,342	208,712	214,916	221,515
2	163,278	166,364	168,421	169,509	170,777	171,646	173,525	176,284	181,018
3	96,811	96,218	95,450	93,671	92,172	90,667	89,564	89,397	90,512
4	41,323	39,682	37,836	35,932	33,979	32,431	31,225	30,552	29,996
5	13,464	12,557	11,652	10,592	9,651	8,795	8,257	7,884	7,732
6	4,538	4,099	3,746	3,304	2,965	2,628	2,450	2,275	2,161
7	1,521	1,385	1,201	1,071	980	869	742	712	669
8	556	465	433	401	324	294	287	267	264
9	230	201	179	145	107	89	94	95	88
10	104	94	83	57	56	48	39	36	34
11	42	31	20	22	22	20	16	15	15
12	20	19	17	16	11	7	6	7	4
13	4	7	5	6	2	3	1	-	-
14	2	3	3	2	1	1	1	1	1
15	2	1	1	-	-	-	-	-	-
Total	491,520	497,252	502,318	504,811	508,504	510,840	514,919	522,441	534,009
Total Number of Children in Respect of whom Benefit is paid	1,055,156	1,065,471	1,060,496	1,053,401	1,039,746	1,028,877	1,018,175	1,019,551	1,034,851

(1) Payment was extended in September 1995 to include 18 year olds in full-time education.

Table D9

Number of Child Beneficiaries of Child Benefit by Age, 1995 to 2003 (Estimated)

Age (in years)	1995	1996	1997	1998	1999	2000	2001	2002	2003
Under 1 ⁽¹⁾	43,255	43,689	46,470	46,962	46,390	46,094	45,691	32,832 ⁽³⁾	41,383
1 under 2	47,869	49,032	50,341	52,805	54,123	54,032	54,931	59,235	59,980
2 under 3	49,808	48,514	49,741	51,086	53,690	55,066	55,214	57,341	58,764
3 under 4	51,818	50,283	49,187	50,430	51,871	54,521	56,131	57,749	56,753
4 under 5	53,639	52,306	50,877	49,779	51,028	52,435	55,473	58,520	57,013
5 under 6	54,813	54,044	52,823	51,379	50,386	51,569	53,276	57,870	57,741
6 under 7	53,431	55,160	54,456	53,288	51,851	50,827	52,279	55,888	56,967
7 under 8	55,743	53,737	55,567	54,800	53,723	52,261	51,447	54,231	54,979
8 under 9	58,327	56,048	54,098	55,940	55,213	54,195	52,815	53,711	53,345
9 under 10	60,453	58,628	56,405	54,357	56,299	55,573	54,738	54,536	52,771
10 under 11	61,012	60,628	58,896	56,645	54,662	56,584	56,074	56,618	53,548
11 under 12	62,495	61,219	60,861	59,085	56,952	54,937	57,015	58,024	55,471
12 under 13	65,473	62,506	61,389	60,993	59,352	57,220	55,383	59,011	56,871
13 under 14	68,185	65,571	62,702	61,457	61,203	59,529	57,522	57,578	57,811
14 under 15	69,903	68,301	65,698	62,741	61,640	61,396	59,815	59,281	56,343
15 under 16	70,445	68,302	66,839	64,637	61,771	60,940	60,652	61,772	57,887
16 under 17	58,581	60,780	59,091	56,615	54,216	50,772	49,485	50,534	53,084
17 under 18	53,487	57,032	58,836	56,915	55,592	52,398	50,488	48,016	52,184
18 under 19 ⁽²⁾	26,734	34,716	39,124	39,832	38,915	37,826	35,911	26,804 ⁽³⁾	41,956
Total	1,065,471	1,060,496	1,053,401	1,039,746	1,028,877	1,018,175	1,014,340	1,019,551	1,034,851

(1) Underestimates the number eligible because of the time lag in applying for benefit.

(2) Payment was extended to this age group on 1 September 1995.

(3) 2002 numbers understated because of processing delays which were rectified in the early months of 2003.

Table D10

Number of Recipients of Qualified Child Increases by Payment Type, 2003 (Estimated)

Payment	1 Qualified Child		2 Qualified Children		3 Qualified Children		4 Qualified Children		5 Qualified Children		6+ Qualified Children		Total Children		Total Families with Children	
	Full Rate	Half Rate	Full Rate	Half Rate	Full Rate	Half Rate	Full Rate	Half Rate	Full Rate	Half Rate	Full Rate	Half Rate	Full Rate	Half Rate	Full Rate	Half Rate
Old Age Contributory Pension	683	399	146	132	33	27	15	6	2	2	-	-	1,156	778	881	566
Retirement Pension	741	294	115	57	32	14	14	5	2	-	1	-	1,133	476	904	371
Old Age (Non-Contributory) Pension	307	94	77	20	21	4	11	1	3	-	-	-	589	150	420	119
Pre-Retirement Allowance	577	111	195	39	81	5	21	4	18	-	-	-	1,445	220	901	159
Widow/er's (Contributory) Pension	4,883	-	2,395	-	982	-	320	-	78	-	-	-	14,478	-	8,687	-
Deserted Wife's Benefit	2,503	-	1,324	-	455	-	181	-	43	-	-	-	7,593	-	4,528	-
One-Parent Family Payment	46,679	414	19,609	41	7,453	-	2,709	-	857	-	-	-	127,291	760	77,700	455
Health and Safety Benefit	1	5	1	-	-	-	-	-	-	-	-	-	3	5	2	5
Disability Benefit	1,954	7,582	1,262	7,565	702	3,541	307	1,091	112	229	61	61	8,702	39,214	4,392	20,069
Incapacity Pension	2,154	3,536	1,037	2,527	451	1,025	141	310	68	62	39	39	6,711	13,541	3,889	7,499
Injury Benefit	24	68	37	86	9	30	3	8	3	-	-	-	152	362	76	192
Interim Disability Benefit	12	29	8	19	4	4	-	3	1	-	-	-	45	91	25	55
Disablement Pension	55	72	33	71	23	35	9	7	4	2	1	1	252	363	125	188
Death Benefit Pension	51	-	31	-	18	-	5	-	-	-	-	-	187	-	105	-
Disability Allowance	2,268	1,135	1,325	756	735	418	385	208	167	66	146	146	10,485	5,611	5,026	2,662
Carer's Benefit	9	111	4	155	2	99	-	27	-	8	-	-	23	884	15	403
Blind Pension	58	36	38	20	25	15	7	9	3	2	1	1	258	173	132	83
Carer's Allowance	438	2,407	311	2,281	177	1,501	87	762	34	260	20	196	2,243	17,164	1,067	7,407
Unemployment Benefit	2,384	7,081	1,746	6,838	933	3,044	431	867	160	162	61	37	11,595	34,399	5,715	18,029
Unemployment Assistance	4,275	1,164	3,820	1,065	2,538	614	1,330	236	659	116	563	92	31,980	7,284	13,185	3,287
Smallholders/ Farm Assist Back to Work Allowance/ Enterprise Allowance	805	239	818	259	557	222	367	110	167	32	109	26	7,135	2,203	2,823	888
Back to Education Allowance	n/a	n/a	n/a	n/a	n/a	n/a	n/a	n/a	n/a	n/a	n/a	n/a	12,629	4,692	n/a	n/a
Supplementary Welfare Allowance	145	213	144	307	87	141	43	58	18	8	9	6	1,015	1,560	446	733
Supplementary Welfare Allowance	6,798	-	3,633	-	1,767	-	788	-	296	-	188	-	25,096	-	13,470	-
TOTAL⁽¹⁾	77,804	24,990	38,109	22,238	17,085	10,739	7,174	3,712	2,695	949	1,647	542	272,196	129,930	144,514	63,170

Table D11

Number of Recipients of Orphan's Allowance/Pension, Child Benefit, Maternity Benefit and Health & Safety Benefit by County, 2003

County	Orphan's (Contributory) Allowance	Orphan's (Non-Contributory) Pension	Child Benefit Recipients	Child Benefit Children	Maternity Benefit	Health & Safety Benefit
Carlow	12	3	7,274	13,877	153	-
Cavan	2	4	7,456	15,661	140	-
Clare	12	10	14,008	27,900	282	-
Cork	39	15	60,607	118,350	1232	2
Donegal	25	10	18,957	38,888	298	-
Dublin	356	232	145,776	268,832	3053	2
Galway	19	17	27,162	55,045	565	-
Kerry	18	12	17,025	33,571	309	-
Kildare	18	12	25,687	48,914	551	-
Kilkenny	16	10	10,248	20,503	192	-
Laois	6	3	7,675	15,511	150	-
Leitrim	5	5	3,364	6,989	66	-
Limerick	20	17	23,754	45,657	455	2
Longford	10	3	4,507	9,247	64	-
Louth	13	6	15,528	29,336	307	1
Mayo	16	9	15,082	31,493	263	-
Meath	20	9	20,127	39,146	475	1
Monaghan	6	2	6,983	14,312	117	-
Offaly	13	8	8,757	17,685	160	1
Roscommon	6	9	6,411	13,211	115	-
Sligo	12	6	7,491	15,088	137	-
Tipperary	20	18	19,669	38,772	338	-
Waterford	22	10	14,549	27,501	280	1
Westmeath	12	7	10,817	21,567	208	1
Wexford	20	7	17,502	34,175	314	-
Wicklow	10	12	17,173	32,738	335	1
Others	7	-	420	882	35	-
Total	735	456	534,009	1,034,851	10,594	12



Section E

illness, disability and caring

Section E: Illness, Disability and Caring

Expenditure and Recipients

Expenditure on Disability Benefit and Invalidity Pension increased by 12.5% and 9.1% respectively. Disability Allowance was introduced in October 1996 and replaced Disabled Persons Maintenance Allowance (DPMA) which was administered by the Health Boards. Expenditure on Disability Allowance increased by 13.7% to over €463 million. There are now 67,720 recipients of the scheme.

Carer's Allowance was introduced in October 1990. Expenditure on Carer's Allowance increased by over €23 million in 2003, an increase of 14.5%. There are now 21,316 recipients of the Scheme, an increase of 921 year on year.

Graph E1 and Table E4 show details of the numbers of Carer's Allowance recipients from 1994 to 2003.

Carer's Benefit is a payment made to insured persons who leave the workforce to care for a person(s) who require full time care and attention. The number of recipients increased by 24 to 639, year on year.

Graph E1

Number of Recipients of Carer's Allowance by Sex, 1993 to 2003

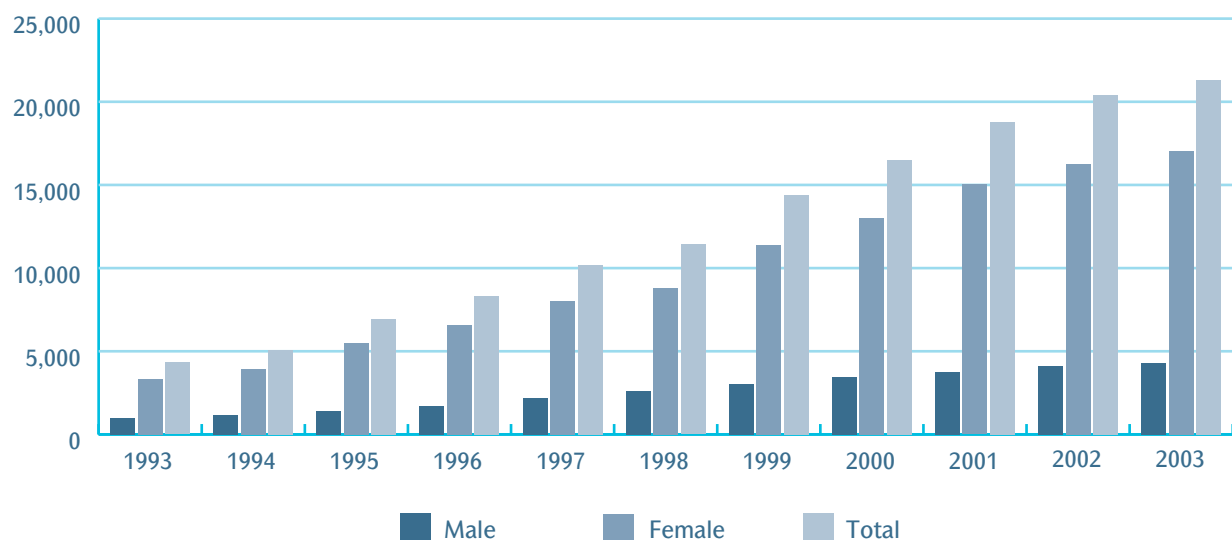


Table E1

Expenditure on Illness, Disability and Caring by Payment Type, 2002 and 2003

Type of Payment	2002	2003 Provisional	Change 2003 over 2002
	€000	€000	%
SOCIAL INSURANCE			
Disability Benefit	385,297	433,410	12.5%
Invalidity Pension	403,617	440,263	9.1%
Carer's Benefit	5,807	6,943	19.6%
SOCIAL ASSISTANCE			
Disability Allowance	407,585	463,608	13.7%
Blind Pension	14,221	14,816	4.2%
Carer's Allowance	160,042	183,273	14.5%
OCCUPATIONAL INJURIES BENEFITS			
Injury Benefit	11,842	11,878	0.3%
Disablement Benefit	59,393	60,810	2.4%
Death Benefit	5,558	5,813	4.6%
Medical Care	225	251	11.6%
Total	1,453,587	1,621,065	11.5%

Table E2

Expenditure on Illness, Disability and Caring by Payment Type, 1994 to 2003

Year	Disability Benefit	Occupational Injuries	Invalidity Pension	Carer's Benefit ⁽¹⁾	Blind Pension ⁽²⁾	Disability Allowance ⁽³⁾	Carer's Allowance	Total ⁽⁴⁾
	€000	€000	€000	€000	€000	€000	€000	€000
1994	210,029	48,494	217,335	-	-	-	18,246	494,850
1995	212,651	51,671	224,052	-	10,793	60,947	25,673	585,805
1996	212,596	54,501	241,034	-	11,047	157,533	34,285	710,996
1997	228,439	60,777	253,023	-	11,134	192,822	46,363	792,559
1998	241,437	61,438	264,259	-	11,655	219,550	57,264	855,603
1999	262,702	63,303	279,576	-	11,760	245,160	72,896	935,397
2000	280,828	65,353	311,511	36	12,302	279,176	99,561	1,048,767
2001	329,897	70,496	354,459	2,457	13,156	332,308	130,325	1,233,098
2002	385,297	77,018	403,617	5,807	14,221	407,585	160,042	1,453,587
2003 ⁽⁵⁾	433,410	78,752	440,263	6,943	14,816	463,608	183,273	1,621,065

(1) Carer's Benefit was introduced in October, 2000.

(2) Expenditure on Blind Pension was included in the expenditure on Old Age (Non-Contributory) Pension up to and including 1994.

(3) Disability Allowance, formerly Disabled Person's Maintenance Allowance, was funded by the Department of Health up to August 1995.

(4) Pay-Related Benefit with Disability Benefit and Injury Benefit was discontinued for new claimants from 6th April 1992. The total includes expenditure on Pay-Related Benefit in 1994.

(5) Provisional.

Table E3

Number of Recipients of Illness, Disability and Caring Payments by Payment Type, 2002 and 2003

Type of Payment	2002	2003	Change 2003 over 2002
Disability Benefit	54,590	57,464	5.3%
Invalidity Pension	52,147	53,414	2.4%
Interim Disability Benefit	404	295	-27.0%
Carer's Benefit	615	639	3.9%
Disability Allowance	62,783	67,720	7.9%
Carer's Allowance ⁽¹⁾	20,395	21,316	4.5%
Blind Pension	2,095	2,061	-1.6%
Injury Benefit	828	821	-0.8%
Death Benefit Pension	668	664	-0.6%
Disablement Pension ^{(2) (3) (4)}	11,612	11,898	2.5%
Total	206,137	216,292	4.9%

- (1) There were 26 persons in receipt of Prescribed Relatives Allowance at the end of December 2003. Prescribed Relatives Allowance was replaced by Carer's Allowance in 1990.
- (2) Disablement Pension is paid where a person suffers loss of physical or mental faculty as a result of an accident at work or contracting an occupational disease. It differs fundamentally from other Social Welfare income support payments in that it is a compensatory payment, rather than an income maintenance payment. Accordingly Disablement Pension can be paid in addition to other Social Welfare payments such as Disability Benefit and Invalidity Pension and can also be paid where a person continues to work.
- (3) Unemployability Supplement is paid as an increase to Disablement Benefit where a person is permanently incapable of work and does not qualify for any other Social Welfare payment. 902 persons were in receipt of an Unemployability Supplement payment at the end of 2003.
- (4) Constant Attendance Allowance is paid as an increase to Disablement Pension where the degree of disablement is assessed at between 50% and 100% and the person has been certified as being in need of constant care and attention. 67 persons were in receipt of Constant Attendance Allowance at end of 2003.

Table E4

Number of Recipients of Invalidity Pension, Disability Benefit, Disablement Pension, Disability Allowance, Carer's Allowance, Death Benefit Pension and Blind Pension, 1994 to 2003

Year	Invalidity Pension	Disability Benefit	Disablement Pension ⁽¹⁾	Disability Allowance ⁽²⁾	Carer's Allowance	Death Benefit Pension	Blind Pension ⁽³⁾
1994	40,226	41,869	8,646	-	5,056	499	-
1995	42,092	41,830	8,977	-	6,917	500	2,476
1996	43,046	42,460	9,364	37,054	8,298	502	2,450
1997	43,633	43,500 ⁽⁴⁾	9,748	43,192	10,196	558	2,404
1998	44,925	43,766	10,182	47,126	11,416	630	2,358
1999	46,946	45,535	10,577	50,431	14,387	662	2,304
2001	48,663	46,940	10,925	54,303	16,478	665	2,229
2001	50,615	50,715	11,230	57,655	18,785	676	2,125
2002	52,147	54,590	11,612	62,783	20,395	668	2,095
2003	53,414	57,464	11,898	67,720	21,316	664	2,061

- (1) Disability Pension is paid where a person suffers loss of physical or mental faculty as a result of an accident at work or contracting an occupational disease. It differs fundamentally from other Social Welfare income support payments in that it is a compensatory payment, rather than an income maintenance payment. Accordingly Disablement Pension can be paid in addition to other Social Welfare payments such as Disability Benefit and Invalidity Pension and can also be paid where a person continues to work.
- (2) Disability Allowance, formerly Disabled Person's Maintenance Allowance, was administered by the Health Boards up to October, 1996.
- (3) Blind Person's Pension was included with Old Age (Non-Contributory) Pension up to and including 1994.
- (4) Estimated

Table E5

Number of Living Alone and Over 80 Allowances by Payment Type, 2003

Payment Type	Over 80 Allowance	Living Alone Allowance
Invalidity Pension	144	7,995
Death Benefit Pension	75	197
Blind Person's Pension	162	393
Total	381	8,585

Table E6

Number of Recipients of Disability Benefit by Age and Sex, 2003

Age	Males	Females	Total
Under 25 years	971	974	1,945
25 to 29 Years	1,198	2,038	3,236
30 to 34 years	1,472	4,592	6,064
35 to 39 years	1,625	5,816	7,441
40 to 44 years	2,139	5,414	7,553
45 to 49 years	2,489	4,807	7,296
50 to 54 years	3,116	4,693	7,809
55 to 59 years	3,583	4,230	7,813
60 to 64 years	3,743	2,810	6,553
65 years and over	1,042	712	1,754
Total	21,378	36,086	57,464

49

Table E7

Number of Recipients of Invalidity Pension by Age and Sex, 2003

Sex and Age	Male	Female	Total
Under 25 years	-	-	-
25 to 29 years	43	38	81
30 to 34 years	170	330	500
35 to 39 years	495	1,042	1,537
40 to 44 years	1,219	2,240	3,459
45 to 49 years	2,424	3,096	5,520
50 to 54 years	4,230	3,964	8,194
55 to 59 years	6,532	5,109	11,641
60 to 64 years	9,025	5,810	14,835
65 years and over	3,894	3,753	7,647
Total	28,032	25,382	53,414

Table E8

Number of Recipients of Carer's Benefit and Carer's Allowance by Age and Sex, 2003

Age	Carer's Benefit			Carer's Allowance		
	Male	Female	Total	Male	Female	Total
Under 25 years	-	6	6	41	220	261
25 to 29 years	3	30	33	78	452	530
30 to 34 years	9	89	98	181	1,083	1,264
35 to 39 years	11	111	122	367	1,775	2,142
40 to 44 years	23	125	148	582	2,149	2,731
45 to 49 years	12	91	103	720	2,270	2,990
50 to 54 years	7	55	62	795	2,510	3,305
55 to 59 years	8	30	38	649	2,429	3,078
60 to 64 years	6	20	26	474	1,884	2,358
65 years and over	-	3	3	412	2,245	2,657
Total	79	560	639	4,299	17,017	21,316

Table E9

Number of Recipients of Blind Pension by Age and Sex, 2003

Age	Male	Female	Total
Under 25 years	51	45	96
25 to 29 years	64	48	112
30 to 34 years	93	86	179
35 to 39 years	82	61	143
40 to 44 years	106	87	193
45 to 49 years	85	85	170
50 to 54 years	110	106	216
55 to 59 years	101	84	185
60 to 64 years	100	106	206
65 years and over	236	325	561
Total	1,028	1,033	2,061

Table E10

Number of Recipients of Disability Allowance by Age and Sex, 2003

Age	Male	Female	Total
Under 25 years	5,838	4,245	10,083
25 to 29 years	3,853	2,751	6,604
30 to 34 years	4,079	2,604	6,683
35 to 39 years	4,206	2,732	6,938
40 to 44 years	4,153	2,650	6,803
45 to 49 years	4,006	2,704	6,710
50 to 54 years	4,594	3,056	7,650
55 to 59 years	4,787	3,227	8,014
60 + years	5,080	3,155	8,235
Total	40,596	27,124	67,720

Table E11

Number of Recipients of Death Benefit Pension, Disablement Pension and Unemployability Supplement by Age and Sex, 2003

Age	Death Benefit Pension			Disablement Pension			Unemployability Supplement ⁽¹⁾		
	Male	Female	Total	Male	Female	Total	Male	Female	Total
Under 25 years	-	-	-	146	35	181	17	9	26
25 to 29 years	-	2	2	286	78	364	30	8	38
30 to 34 years	-	8	8	484	212	696	53	34	87
35 to 39 years	-	16	16	784	248	1,032	67	34	101
40 to 44 years	-	32	32	1,085	309	1,394	72	42	114
45 to 49 years	-	45	45	1,255	299	1,554	97	45	142
50 to 54 years	-	62	62	1,389	309	1,698	97	39	136
55 to 59 years	-	88	88	1,398	268	1,666	71	40	111
60 to 64 years	-	83	83	1,138	167	1,305	61	20	81
65 years and over	4	324	328	1,744	264	2,008	48	18	66
Total	4	660	664	9,709	2,189	11,898	613	289	902

(1) Unemployability Supplement is paid as a supplement to Disablement Pension.

Table E12

Number of Recipients of Injury Benefit and Interim Disability Benefit by Age and Sex, 2003

Age	Injury Benefit			Interim Disability Benefit		
	Male	Female	Total	Male	Female	Total
Under 25 years	68	26	94	25	8	33
25 to 29 years	79	32	111	34	12	46
30 to 34 years	72	32	104	39	14	53
35 to 39 years	85	23	108	27	16	43
40 to 44 years	77	35	112	17	7	24
45 to 49 years	61	30	91	22	8	30
50 to 54 years	45	27	72	14	9	23
55 to 59 years	55	17	72	16	11	27
60 to 64 years	31	14	45	5	8	13
65 years and over	9	3	12	3	-	3
Total	582	239	821	202	93	295

Table E13

Number of Recipients of Disablement Pension by Degree of Disablement, 2003⁽¹⁾

Type of Payment	Number of Recipients
Disablement Pension by Degree of Disablement ⁽²⁾ :	
Under 20%	1,749
20%	2,971
30%	3,296
40%	1,847
50%	876
60%	576
70%	267
80%	227
90%	66
100%	23
Total	11,898

(1) Includes 902 Unemployability Supplement payments and 67 Constant Attendance Allowance payments. These payments are in addition to Disablement Pension.

(2) The rate of Disablement Pension depends on the degree of disablement, which is medically assessed. For assessments of up to 19% disablement, benefit will normally be a lump sum and from 20% upwards, a pension is payable. 759 gratuities were paid in 2003.

Table E14

Number of Recipients of Illness, Disability and Caring Payments by Payment Type and Number of Dependents, 2003 (Estimated)

Number of Recipients	Disability Benefit	Incapacity Pension	Carer's Benefit	Injury Benefit	Interim Disability Benefit	Death Benefit Pensions	Disability Allowance	Blind Pension	Carer's Allowance	Total
Personal rate only	29,321	34,865	221	514	207	559	57,498	1789	12,842	137,816
With Qualified Adult only	3,682	7,167	-	39	8	-	2,534	62	-	13,492
With 1 full rate child allowance	1,954	2,154	9	24	12	51	2,268	53	438	6,963
With 2 full rate child allowances	1,262	1,037	4	37	8	31	1,325	38	311	4,053
With 3 full rate child allowances	702	451	2	9	4	18	735	25	177	2,123
With 4 full rate child allowances	307	141	-	3	-	5	385	7	87	935
With 5 full rate child allowances	112	68	-	3	1	-	167	3	34	388
With 6+ full rate child allowances	55	35	-	-	-	-	146	1	20	257
With 1 half rate child allowance	7,582	3,536	111	68	29	-	1,135	36	2,407	14,904
With 2 half rate child allowances	7,565	2,526	155	86	19	-	756	20	2,281	13,408
With 3 half rate child allowances	3,541	1,025	99	30	4	-	418	15	1,501	6,633
With 4 half rate child allowances	1,091	310	27	8	3	-	208	9	762	2,418
With 5 half rate child allowances	229	62	8	-	-	-	66	2	260	627
With 6+ half rate child allowances	61	37	3	-	-	-	79	1	196	377
Total number of recipients	57,464	53,414	639	821	295	664	67,720	2,061	21,316	204,394
Recipients with Qualified Child allowances	24,461	11,382	418	268	80	105	7,688	210	8,474	53,086
Percentage of recipients with Qualified Child allowances	42.6%	21.3%	65.4%	32.6%	27.1%	15.8%	11.4%	10.2%	39.8%	26.0%
Total number of Qualified Adults	8,074	10,381	-	115	33	-	5,717	135	-	24,455
Total number of children⁽¹⁾	47,916	20,162	907	514	136	187	16,096	431	19,407	105,756

(1) An increase in respect of a Qualified Child is payable at half rate where a spouse/partner living with the recipient is not a Qualified Adult. Each spouse/partner may receive half the Qualified Child allowance where both are in receipt of a social welfare payment. This can result in some double counting of the actual number of Qualified Children.

Table E15

Number of Recipients of Illness, Disability and Caring Payments by Payment Type and County, 2003 (Estimated)

County	Disability Benefit	Invalidity Pension	Carer's Benefit	Disablement Pension	Unemployment Supplement ⁽¹⁾	Injury Benefit	Interim Disability Benefit	Death Benefit Pension	Disability Allowance	Blind Pension	Carer's Allowance
Carlow	989	879	10	190	9	27	7	11	906	28	307
Cavan	794	574	13	176	13	22	6	11	890	31	455
Clare	1,196	949	25	259	25	21	6	8	1,752	35	589
Cork	7,297	7,433	63	1,680	113	108	31	92	8,166	168	2,161
Donegal	2,612	1,508	28	338	36	31	17	21	3,147	132	1,505
Dublin	15,869	17,026	116	2,871	203	174	67	161	16,437	515	3,141
Galway	2,140	1,580	41	507	59	29	12	19	4,229	135	1,548
Kerry	1,416	1,249	33	295	21	28	10	20	2,991	88	1,176
Kildare	2,457	1,769	35	423	36	41	12	25	2,037	36	542
Kilkenny	796	837	19	238	15	12	2	15	1,355	49	454
Laois	625	570	13	147	15	17	7	6	967	27	318
Leitrim	521	406	10	100	10	2	1	8	572	36	238
Limerick	3,080	2,973	42	746	49	41	23	32	3,672	82	1,115
Longford	572	496	5	129	8	9	1	8	676	25	360
Louth	2,385	2,210	14	482	31	28	10	25	1,609	59	535
Mayo	1,530	1,176	25	316	29	21	7	13	2,676	99	1,375
Meath	1,997	1,311	24	439	26	35	16	21	1,452	44	527
Monaghan	883	556	2	160	16	7	7	8	906	30	426
Offaly	1,080	854	10	206	18	14	4	12	1,105	37	407
Roscommon	721	552	9	179	9	7	4	18	991	33	425
Sligo	881	689	13	175	21	18	2	8	1,201	77	403
Tipperary	1,760	1,669	29	525	53	36	8	44	3,061	69	1,048
Waterford	1,377	1,536	12	369	26	22	9	13	1,680	51	496
Westmeath	1,073	981	13	196	20	25	3	17	1,164	44	465
Wexford	1,617	1,596	17	312	21	32	12	22	2,297	79	775
Wicklow	1,551	1,356	18	304	20	13	11	17	1,763	49	523
Others	245	679	-	136	-	1	-	9	18	3	2
Total	57,464	53,414	639	11,898	902	821	295	664	67,720	2,061	21,316

(1) Unemployment Supplement is paid as a supplement to Disablement Pension

Table E16

Number of Disablement Cases Referred to Medical Assessors for Assessment or Reassessment, 1994 to 2003

Year	Number of Persons Called for Examination	Number of Persons Examined	Number of Persons who did not Attend for Examination
1994	5,551	4,804	747
1995	5,375	4,688	687
1996	6,355	5,269	1,086
1997	6,588	5,379	1,209
1998	6,386	5,032	1,354
1999	6,604	5,080	1,524
2000	4,589	3,428	1,161
2001	4,311	2,997	1,314
2002	3,898	2,709	1,189
2003	3,234	2,296	811

Table E17

Number of Disability Benefit Cases Referred to Medical Assessors, 1994 to 2003

Year	Number of Persons Called for Examination	Number of Persons Examined and found to be		Number of Persons who did not attend for Examination	
		Incapable of Work	Capable of Work	Medically Certified Unfit to Attend	Others
1994	59,274	33,299	7,995	1,677	16,303
1995	54,226	29,131	8,029	1,264	15,802
1996	52,059	27,927	6,665	1,138	16,329
1997	55,089	30,684	7,137	566	16,702
1998	63,927	35,458	7,574	415	20,480
1999	59,224	33,254	7,410	386	18,174
2000	45,037	25,323	7,036	226	12,452
2001	41,710	22,827	6,271	190	12,422
2002	42,017	23,485	5,887	200	12,445
2003	38,670	19,958	6,406	240	12,066

Table E18

Number of Disability Allowance Cases Referred to Medical Assessors, 1997 to 2002

Year	Number of Examinations Scheduled ⁽¹⁾	Number of Persons Examined and found to be		Number of Persons who did not attend for Examination
		Qualified for Disability Allowance	Not qualified for Disability Allowance	
1997	6,423	3,001	1,806	1,616
1998	7,229	3,032	2,288	1,909
1999	8,862	3,801	2,631	2,430
2000	10,285	4,017	2,840	3,428
2001	9,663	3,577	3,016	3,070
2002	8,952	3,295	2,755	2,641
2003	8,450	2,985	2,689	2,279

(1) This figure includes Disability Allowance Appeal and Disability Allowance Review examinations.

(2) 1997 data includes data relating to applications received from October 1996.

80%



Section F

unemployment supports

Section F: Unemployment Supports

The statistics in this section of the report relate to the Live Register, expenditure and recipients of unemployment payments;

Live Register and Unemployment Payments

The Live Register is a monthly statistical count compiled by the Central Statistics Office of certain categories of persons registered with the Department of Social and Family Affairs for Unemployment Benefit, Unemployment Assistance and credited Social Insurance contributions.

The Live Register comprises of the following classes of persons under the age of 65 years:

- (i) all claimants of Unemployment Benefit excluding systematic short-time workers,
- (ii) applicants for Unemployment Assistance excluding smallholders and self-employed persons,
- (iii) other registrants including applicants for credited Social Welfare contributions but excluding those directly involved in an industrial dispute.

This means that not all persons who are in receipt of Unemployment Benefit or Assistance are on the Live Register. Some persons who are included on the Live Register e.g. applicants for credited contributions, are not in receipt of an unemployment benefit or assistance payment.

The Unemployment Recipients figure shown in Section A and tables F3 and F4 is not directly comparable with the Live Register figure, as this figure only includes those who were in receipt of a payment at the end of December.

Time Series and Changes to Existing Payments

Farm Assist was introduced in April 1999 and replaced the Smallholders Unemployment Assistance scheme. The new scheme provides an income supplement for low-income farmers. The majority of existing recipients of Smallholders Unemployment Assistance transferred to Farm Assist during the course of 1999 and 2000. There were 750 recipients of Smallholders Unemployment Assistance at the end of 1999, decreasing to 24 at the end of 2003.

Data on expenditure on Farm Assist and recipients of Farm Assist/Smallholders is contained in Section G (Employment Supports). Expenditure on Unemployment Assistance shown in this Section includes expenditure on Smallholders Unemployment Assistance. This affects the comparability of different years' figures in this Section and in Section G.

Trends

Overall expenditure on Unemployment Supports increased by 11.5% over 2002.

Expenditure on Unemployment Assistance rose by over €53 million compared with 2002, an increase of 10.5%. Expenditure on Unemployment Benefit also rose by over €53 million, an increase of 12.7% on 2002.

The Live Register increased by 4,462 during 2003, an increase of 2.7%. Table F14 shows the numbers on the Live Register by County from 1994 to 2003 and the percentage increase/decrease in each county.

Table F1

Expenditure on Unemployment Supports by Payment Type, 2002 and 2003

Type of Payment	2002	2003 Provisional	Change 2003 over 2002
	€000	€000	%
SOCIAL INSURANCE			
Unemployment Benefit	423,487	477,094	12.7%
SOCIAL ASSISTANCE			
Unemployment Assistance ⁽¹⁾	511,985	565,952	10.5%
Total⁽¹⁾	935,472	1,043,046	11.5%

(1) Data on expenditure on Unemployment Assistance includes expenditure on Smallholders Unemployment Assistance. Farm Assist was introduced in 1999 and replaced the Smallholders Unemployment Assistance scheme. The great majority of recipients of the Smallholders Unemployment Assistance transferred to Farm Assist during the course of 1999 & 2000. Data on Farm Assist expenditure is included in Section G. This affects the comparability of different years' figures in this section.

Table F2

Expenditure on Unemployment Supports by Payment Type, 1994 to 2003

Year	Unemployment Benefit	Pay-Related Benefit with Unemployment Benefit ⁽¹⁾	Unemployment Assistance ⁽²⁾	Total
	€000	€000	€000	€000
1994	273,131	20,375	1,015,192	1,308,699
1995	254,857	4,779	1,014,535	1,274,171
1996	263,318	62	1,020,518	1,283,898
1997	273,297	1	899,796	1,173,095
1998	300,506	-	770,022	1,070,529
1999	293,769	-	615,624	909,393
2000	265,016	-	469,092	734,108
2001	290,689	-	429,875	720,564
2002	511,985	-	423,487	935,472
2003 ⁽³⁾	565,952	-	477,094	1,043,046

(1) Pay-Related Benefit with Unemployment Benefit was discontinued for new claimants from July 1994.

(2) Data on expenditure on Unemployment Assistance includes expenditure on Smallholders Unemployment Assistance. Farm Assist was introduced in 1999 and replaced the Smallholders Unemployment Assistance scheme. The great majority of recipients of the Smallholders Unemployment Assistance transferred to Farm Assist during the course of 1999 & 2000. Data on Farm Assist expenditure is included in Section G. This affects the comparability of different years' figures in this section.

(3) Provisional

Table F3

Number of Recipients of Unemployment Benefit and Unemployment Assistance, 1994 to 2003

Year	Unemployment Benefit	Unemployment Assistance	Total
1994	65,480	200,198	265,678
1995	62,050	200,587	262,637
1996	62,751	184,031	246,782
1997	63,914	159,777	223,691
1998	61,591	120,496	182,087
1999	56,576	93,129	149,705
2000	46,565	69,504	116,069
2001	59,884	66,563	126,447
2002	66,416	71,566	137,982
2003	70,090	75,249	145,339

Table F4

Number of Recipients of Unemployment Benefit and Unemployment Assistance by Number of Dependants, 2003

Number of Recipients	Unemployment Benefit	Unemployment Assistance	Total
Personal Rate only	43,164	54,615	97,779
With Qualified Adult only	3,182	4,162	7,344
1 full rate Qualified Child	2,384	4,275	6,659
2 full rate Qualified Children	1,746	3,820	5,566
3 full rate Qualified Children	933	2,538	3,471
4 full rate Qualified Children	431	1,330	1,761
5 full rate Qualified Children	160	659	819
6+full rate Qualified Children	61	563	624
1 half rate Qualified Child	7,081	1,164	8,245
2 half rate Qualified Children	6,838	1,065	7,903
3 half rate Qualified Children	3,044	614	3,658
4 half rate Qualified Children	867	236	1,103
5 half rate Qualified Children	162	116	278
6+ half rate Qualified Children	37	92	129
Total Number of Recipients	70,090	75,249	145,339
Number of Recipients with a Qualified Adult	7,438	15,662	23,100
Percentage of Recipients with a Qualified Adult	10.6%	20.8%	15.9%
Number of Recipients with Qualified Children	23,744	16,472	40,216
Percentage of Recipients with Qualified Children	33.9%	21.9%	27.7%
Total Number of Children⁽¹⁾	45,994	39,264	85,258

(1) A Qualified Child Increase is payable at half rate where a spouse, living with the recipient, is not a Qualified Adult. Each spouse may receive half the Qualified Child Increase where both are in receipt of a social welfare payment. This can result in some double counting of the actual number of Qualified Children.

Table F5

Number of Persons on the Live Register on the last Friday of each Month, 2003

Month	Unemployment Benefit	Unemployment Assistance	Credited Contributions	Total Live Register
January	79,182	80,349	11,170	170,701
February	79,939	80,358	11,097	171,394
March	77,774	79,365	10,920	168,059
April	79,868	79,530	11,542	170,940
May	75,069	79,727	11,309	166,105
June	82,271	83,461	12,120	177,852
July	87,438	85,216	12,793	185,447
August	87,255	85,635	13,063	185,953
September	76,426	82,223	12,173	170,822
October	74,710	79,864	11,978	166,552
November	73,066	79,801	11,674	164,541
December	77,781	80,725	12,098	170,604
Average	79,232	81,355	11,828	172,414

Source: Central Statistics Office

Table F6

Average Number of Persons on the Live Register, 1994 to 2003

Year	Unemployment Benefit	Unemployment Assistance	Credited Contributions	Total Live Register
1994	65,788	202,157	14,468	282,413
1995	61,508	200,708	15,530	277,746
1996	62,597	198,927	17,707	279,231
1997	64,955	171,755	17,669	254,379
1998	68,088	142,649	16,358	227,095
1999	64,945	113,276	15,288	193,509
2000	57,198	85,013	13,187	155,398
2001	58,197	72,552	11,504	142,253
2002	73,931	78,010	11,420	163,361
2003	79,232	81,355	11,828	172,414

Source: Central Statistics Office

Table F7

Flows On and Off the Live Register by Month, 2003

Month	New Registrations	Outflow	Live Register	Net Change
January	32,776	28,217	170,701	4,559
February	23,767	23,074	171,394	693
March	19,946	23,281	168,059	-3,335
April	23,869	20,988	170,940	2,881
May	25,089	29,924	166,105	-4,835
June	30,455	18,708	177,852	11,747
July	27,917	20,322	185,447	7,595
August	25,816	25,310	185,953	506
September	22,248	37,379	170,822	-15,131
October	22,329	26,599	166,552	-4,270
November	22,371	24,382	164,541	-2,011
December	20,761	14,698	170,604	6,063
Total	297,344	292,882	-	4,462

Source: Central Statistics Office

Graph F1

Expenditure on Unemployment Benefit/Pay Related Benefit and Unemployment Assistance, 1994 to 2003

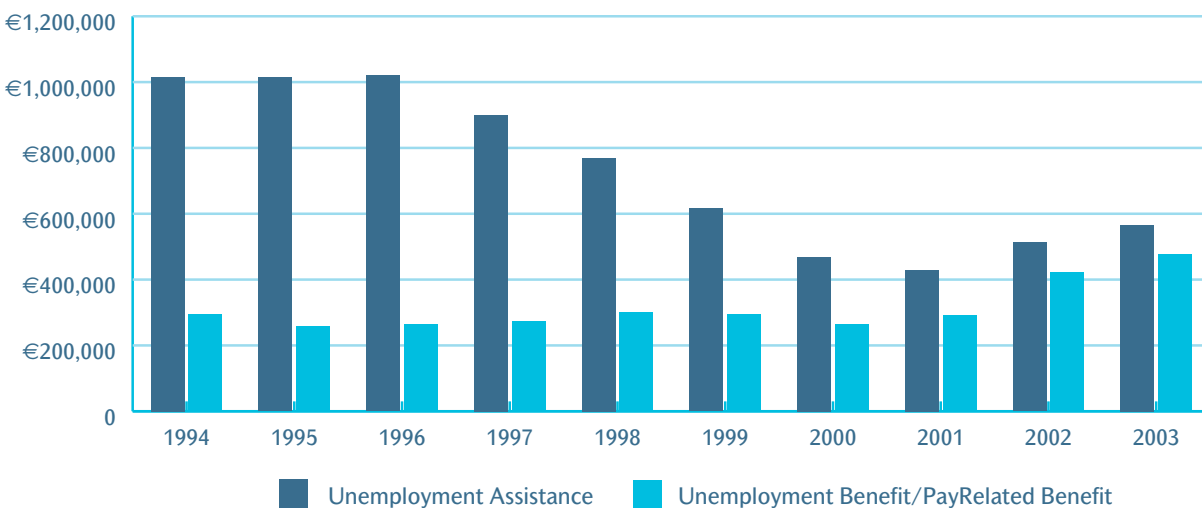


Table F8

Number of Persons on the Live Register by Age and Sex, October 2003 (Estimated)

Age Group	Males		Females		Total	
	Number	%	Number	%	Number	%
Under 20 years	3,937	4.1%	3,550	5.2%	7,487	4.5%
20 to 24 years	13,964	14.6%	10,316	15.0%	24,280	14.8%
25 to 34 years	25,718	26.8%	18,718	27.3%	44,436	27.0%
35 to 44 years	20,929	21.8%	17,189	25.0%	38,118	23.2%
45 to 54 years	19,108	19.9%	12,141	17.7%	31,249	19.0%
55 to 59 years	7,274	7.6%	4,202	6.1%	11,476	7.0%
60 to 64 years	5,008	5.2%	2,521	3.7%	7,529	4.6%
Total Live Register	95,938	100.0%	68,637	100.0%	164,575	100.0%

Source: Central Statistical Office

Table F9

Number of Persons on the Live Register in October 2003, Classified by Age and Sex

Sex/Age	Duration of Continuous Registration						Total
	< 3 mths	3 - 6 mths	6 - 12 mths	1 - 2 yrs	2 - 3 yrs	> 3 yrs	
Males							
< 20 yrs	1,931	791	736	477	2	-	3,937
20 - 24 yrs	5,852	2,757	2,401	1,662	713	579	13,964
25 - 34 yrs	9,321	4,256	4,640	3,566	1,397	2,538	25,718
35 - 44 yrs	6,738	2,960	3,713	3,030	1,204	3,284	20,929
45 - 54 yrs	5,278	2,192	3,082	2,424	1,150	4,982	19,108
55 - 59 yrs	2,205	943	1,310	953	336	1,527	7,274
60 - 64 yrs	1,560	696	1,087	738	204	723	5,008
Total Males	32,885	14,595	16,969	12,850	5,006	13,633	95,938
Females							
< 20 yrs	1,641	774	718	412	1	4	3,550
20 - 24 yrs	5,013	2,013	1,486	1,043	426	335	10,316
25 - 34 yrs	8,697	3,326	3,364	1,862	496	973	18,718
35 - 44 yrs	7,135	2,510	2,949	2,000	685	1,910	17,189
45 - 54 yrs	5,226	1,608	1,840	1,192	489	1,786	12,141
55 - 59 yrs	1,882	561	743	439	144	433	4,202
60 - 64 yrs	1,094	330	444	325	100	228	2,521
Total Females	30,688	11,122	11,544	7,273	2,341	5,669	68,637
All Persons							
< 20 yrs	3,572	1,565	1,454	889	3	4	7,487
20 - 24 yrs	10,865	4,770	3,887	2,705	1,139	914	24,280
25 - 34 yrs	18,018	7,582	8,004	5,428	1,893	3,511	44,436
35 - 44 yrs	13,873	5,470	6,662	5,030	1,889	5,194	38,118
45 - 54 yrs	10,504	3,800	4,922	3,616	1,639	6,768	31,249
55 - 59 yrs	4,087	1,504	2,053	1,392	480	1,960	11,476
60 - 64 yrs	2,654	1,026	1,531	1,063	304	951	7,529
Total	63,573	25,717	28,513	20,123	7,347	19,302	164,575

Source: Central Statistics Office.

Table F10

Number of Persons on the Live Register in October by Sex and Duration, 1994 to 2003.

Year	Male			Female			Overall Total
	< 1 yr	>= 1 yr	Total	< 1 yr	>= 1 yr	Total	
1994	81,701	95,451	177,152	58,069	37,647	95,716	272,868
1995	81,675	93,766	175,441	60,117	39,976	100,093	275,534
1996	75,092	93,409	168,501	59,614	40,915	100,529	269,030
1997	70,938	78,128	149,066	57,413	37,002	94,415	243,481
1998	62,255	63,503	125,758	53,860	31,852	85,712	211,470
1999	52,032	49,522	101,554	50,151	25,587	75,738	177,292
2000	45,206	35,138	80,344	40,462	18,904	59,366	139,710
2001	53,472	30,061	83,533	42,628	15,342	57,970	141,503
2002	64,586	29,107	93,693	50,106	13,866	63,972	157,665
2003	64,449	31,489	95,938	53,354	15,283	68,637	164,575

Source: Central Statistics Office.

Graph F2

Number of Persons on the Live Register by Age and Sex, 2003

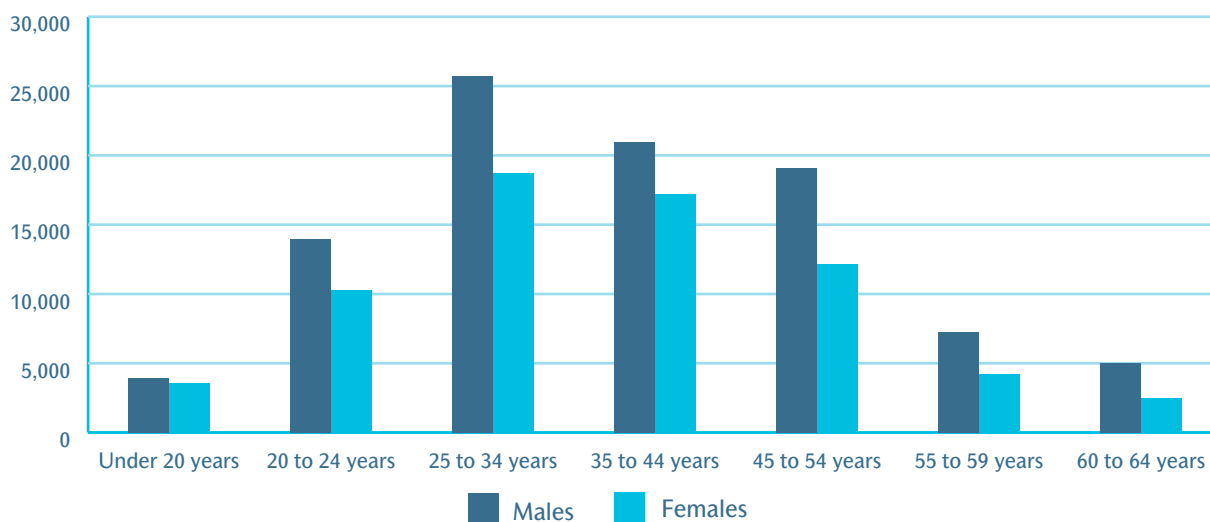


Table F11

Categories excluded from the Live Register: Number of Short-Time Workers, Self-Employed and Persons aged 65 and over, in each Month during 2003

Month	Short-Time Workers	Self-Employed	Persons Aged 65 years and over
January	2,898	1,551	907
February	3,242	1,573	915
March	3,302	1,627	891
April	3,202	1,620	948
May	2,976	1,659	920
June	3,254	1,684	953
July	2,979	1,712	983
August	2,721	1,721	970
September	2,510	1,724	915
October	2,287	1,727	917
November	2,290	1,742	912
December	2,410	1,759	946
Average	2,839	1,675	931

Source: Central Statistics Office

Graph F3

Number of persons on the Live Register in October 2003, by Sex and Duration

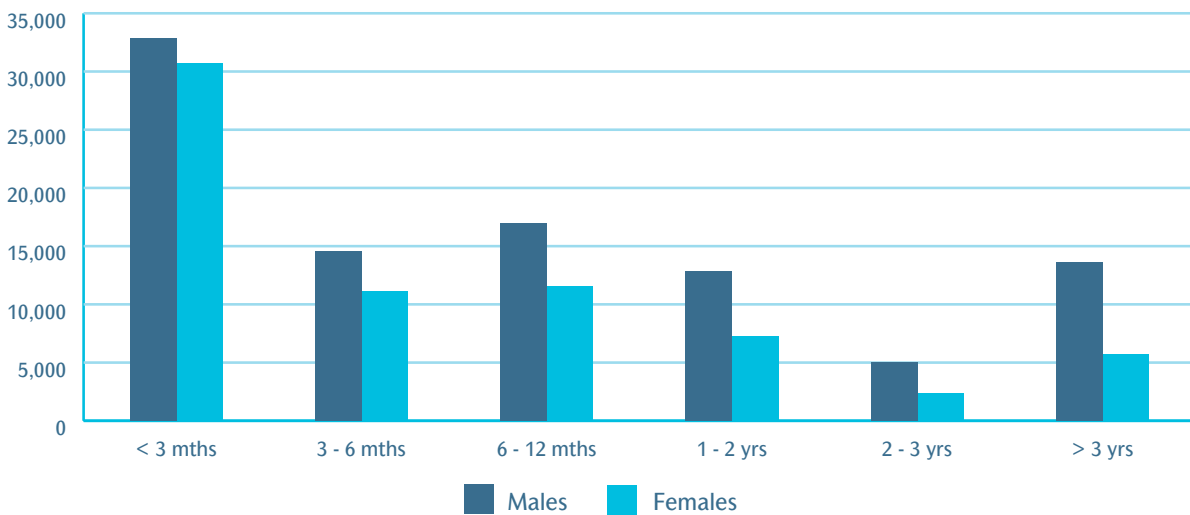


Table F12

Categories Excluded from the Live Register: Average number of Short-Time Workers, Self-Employed and Persons aged 65 and over, 1994 to 2003

Year	Short-Time Workers	Self-Employed	Persons Aged 65 years and over
1994	6,111	3,697	605
1995	6,159	3,541	523
1996	6,908	3,251	651
1997	4,925	3,073	752
1998	4,380	2,771	691
1999	3,642	2,306	778
2000	2,791	1,876	741
2001	2,949	1,593	679
2002	3,131	1,547	821
2003	2,410	1,759	946

Source: Central Statistics Office

Table F13

Average Live Register, Total Labour Force and Seasonally Adjusted Standardised Unemployment Rate, 1994 to 2003

Year	Average Live Register	Total Labour Force ⁽¹⁾	Seasonally Adjusted Standardised Unemployment Rate
1994	282,413	1,431,600	14.1
1995	277,746	1,459,200	12.1
1996	279,230	1,507,500	11.5
1997	254,379	1,539,000	10.3
1998	227,095	1,621,100	7.4
1999	193,509	1,688,100	5.5
2000	155,398	1,745,600	4.2
2001	142,253	1,781,900	4.0
2002	163,361	1,827,000	4.5
2003	172,414	1,859,700	4.6

(1) Data refers to April from 1994 to 1997 and May thereafter.

Source: Central Statistics Office

Table F14

Numbers on the Live Register by County, 1994 to 2003

County ⁽¹⁾	1994	1995	1996	1997	1998	1999	2000	2001	2002	2003	Change
Carlow	3,691	3,661	3,576	3,407	3,050	2,496	1,964	2,026	2,079	2,227	-39.7%
Cavan	2,829	2,879	2,693	2,627	2,350	2,019	1,736	1,834	2,002	2,128	-24.8%
Clare	5,639	5,684	5,338	5,059	4,245	3,602	3,003	3,473	4,058	4,219	-25.2%
Cork	31,093	31,651	30,945	27,339	22,138	17,855	14,538	16,698	17,456	17,200	-44.7%
Donegal	12,569	13,127	12,981	12,927	13,485	11,699	10,088	9,896	9,897	10,149	-19.3%
Dublin	91,473	91,569	83,549	73,318	59,120	45,483	33,186	35,596	41,455	43,562	-52.4%
Galway	15,050	15,890	14,594	13,404	11,789	9,862	8,011	8,625	9,403	9,348	-37.9%
Kerry	9,337	10,227	10,247	9,985	9,101	7,587	6,025	6,162	6,704	7,086	-24.1%
Kildare	8,562	8,387	7,864	7,022	5,839	4,347	3,268	3,697	4,362	4,752	-44.5%
Kilkenny	4,031	4,160	3,963	3,752	3,472	2,703	2,047	2,182	2,467	2,716	-32.6%
Laois	3,277	3,320	3,196	2,867	2,575	2,131	1,798	1,850	2,049	2,196	-33.0%
Leitrim	1,837	1,841	1,864	1,876	1,669	1,406	1,216	1,108	1,247	1,231	-33.0%
Limerick	12,085	12,832	11,879	10,602	8,787	7,595	6,306	6,954	8,281	8,123	-32.8%
Longford	2,305	2,356	2,409	2,230	2,166	2,054	1,715	1,674	1,810	1,820	-21.0%
Louth	10,425	10,173	10,116	9,696	8,583	7,020	6,075	7,189	7,559	7,508	-28.0%
Mayo	9,463	10,009	9,808	9,445	8,449	7,629	6,140	6,094	6,342	6,106	-35.5%
Meath	3,855	4,067	3,953	3,678	3,393	2,753	2,085	2,855	2,844	3,218	-16.5%
Monaghan	3,264	3,472	3,475	3,384	3,195	2,743	2,482	2,752	2,521	2,486	-23.8%
Offaly	4,342	3,967	3,648	3,443	3,376	2,623	2,222	2,341	2,640	2,840	-34.6%
Roscommon	1,969	1,982	2,108	2,068	1,994	1,876	1,528	1,502	1,513	1,389	-29.5%
Sligo	3,377	3,636	3,467	3,532	3,160	2,794	2,372	2,343	2,388	2,236	-33.8%
Tipperary	9,623	9,598	8,849	8,460	7,881	6,737	5,775	5,466	6,286	6,548	-32.0%
Waterford	8,604	8,773	8,105	7,693	7,257	6,573	5,699	7,043	6,074	6,098	-29.1%
Westmeath	4,553	5,212	4,785	4,379	7,842	3,283	2,618	2,960	3,305	3,628	-20.3%
Wexford	9,317	9,221	9,157	8,621	6,027	6,885	5,938	6,257	7,058	7,141	-23.4%
Wicklow	7,613	7,729	7,573	6,916	1,144	4,784	3,751	3,829	4,342	4,649	-38.9%
Total	280,183	285,423	270,142	247,730	212,087	176,539	141,586	152,406	166,142	170,604	-39.1%

(1) The basis of the county classification used is the Department of Social and Family Affairs local office of Registration. The areas served by Local Offices do not correspond to specific geographic boundaries. Therefore, registrants at a given local office do not necessarily come from a particular region or area which can be precisely delineated.

Source: Central Statistics Office.





40%

Section G

employment supports

Section G: Employment Supports

The statistics in this section of the report relate to expenditure and recipients of a range of Employment Supports provided by the Department of Social and Family Affairs. These include:

- Family Income Supplement
- Back to Work Allowance
- Back to Work Enterprise Allowance
- Back to Education Allowance
- Part Time Job Incentive Scheme
- Farm Assist

Time series and Existing Payments

Farm Assist was introduced in April 1999 and replaced the Smallholders Unemployment Assistance Scheme. The new scheme provides an income supplement for low-income farmers. The majority of existing recipients of Smallholders Assistance transferred to Farm Assist during the course of 1999 and 2000. There were 8,707 recipients of Farm Assist/Smallholders at the end of 2003, of which 24 continued to be in receipt of Smallholders Unemployment Assistance.

Data on expenditure on Farm Assist and recipients of Farm Assist/Smallholders is contained in this Section. Expenditure on Smallholders Unemployment Assistance is contained in Section F (Unemployment Supports). This affects the comparability of different years' figures in this Section and in Section F.

Trends

Overall expenditure on Employment Supports decreased by €21.6 million in 2003, a decrease of 8.0% over 2002. The total number of recipients of Employment Supports decreased by 6,808, a decrease of 13.4%.

Expenditure on Family Income Supplement increased by 6.9%. The number of recipients of Family Income Supplement increased by 274, an increase of 2.3% over 2002. Expenditure on Back to Work Allowance (including Back to Work Enterprise Allowance) decreased by over €31m, a decrease of 24.6%. The number of recipients of Back to Work Allowance decreased by 4,299, a decrease of 37.4%. The number of recipients of Back to Work Enterprise Allowance decreased by 3,618, a decrease of 26.8%. The number of recipients of Farm Assist/Smallholders increased by 193, an increase on 2.3% over the previous year.

Table G1

Expenditure on Employment Supports by Payment Type, 2002 and 2003

Type of Payment	2002	2003 Provisional	Change 2003 over 2002
	€000	€000	%
SOCIAL ASSISTANCE			
Family Income Supplement	42,423	45,360	6.9%
Back to Work Allowance/Back to Work Enterprise Allowance	129,087	97,396	-24.6%
Back to Education Allowance	35,392	38,276	8.1%
Students Summer Jobs Scheme ⁽³⁾	66	-	-
Part-Time Job Incentive Scheme	1,126	1,056	-6.2%
Farm Assist ⁽¹⁾	58,571	62,806	7.2%
Other ⁽²⁾	2,463	2,679	8.8%
Total⁽¹⁾	269,128	247,573	-8.0%

- (1) Farm Assist was introduced in April 1999 and replaced the Smallholders Unemployment Assistance scheme. The great majority of recipients of the Smallholders Unemployment Assistance scheme transferred to Farm Assist during the course of 1999 and 2000. Data on expenditure on Smallholders Unemployment Assistance is contained in Section F. This affects the comparability of different years' expenditure figures.
- (2) Includes, Technical Assistance/Training Grants to Back to Work participants, Credit Union loan guarantee scheme for Back to Work participants, Small Project grants and continued payment for qualified children.
- (3) Responsibility for the administration of these schemes was transferred to the Department of Community, Rural and Gaeltacht Affairs with effect from June 2002.

Table G2

Expenditure on Family Income Supplement and Other Employment Supports, 1994 to 2003

Year	Family Income Supplement	Other Employment Supports	Total
	€000	€000	€000
1994	26,442	26,049	52,491
1995	27,078	56,387	83,465
1996	27,792	79,143	106,935
1997	32,999	123,672	156,671
1998	36,386	163,768	200,154
1999	41,134	209,951	251,085
2000	39,386	245,898	285,284
2001	37,099	246,605	283,704
2002	42,423	226,705	269,128
2003 ⁽²⁾	45,360	202,213	247,573

- (1) Includes expenditure on Farm Assist. Farm Assist was introduced in April 1999 and replaced the Smallholders Unemployment Assistance scheme. The great majority of recipients of the Smallholders Unemployment Assistance scheme transferred to Farm Assist during the course of 1999 and 2000. Data on expenditure on Smallholders Unemployment Assistance is contained in Section F. This affects the comparability of different years' expenditure figures.
- (2) Provisional

Table G3

Number of Recipients of Employment Supports by Payment Type, 2002 and 2003

Type of Payment	2002	2003	Change 2003 over 2002
Back to Work Allowance	11,496	7,197	-37.4%
Back to Work Enterprise Allowance	13,490	9,872	-26.8%
Back to Education Allowance	5,041	5,696	13.0%
Part-Time Job Incentive Scheme	336	324	-3.6%
Family Income Supplement	12,043	12,317	2.3%
Farm Assist/Smallholders(1)	8,514	8,707	2.3%
Total	50,920	44,113	-13.4%

(1) Farm Assist was introduced in April 1999 and replaced the Smallholders Unemployment Assistance scheme. The great majority of recipients of the Smallholders Unemployment Assistance scheme transferred to Farm Assist during the course of 1999 and 2000. At the end of 2003, 8,674 persons were in receipt of Farm Assist and 24 continued to be in receipt of Smallholders Unemployment Assistance.

Table G4

Number of Families Receiving Family Income Supplement, 1994 to 2003

Year	Number of Recipients Families	Number of Child Beneficiaries
1994	10,802	32,078
1995	11,486	32,712
1996	11,898	29,754
1997	12,973	37,223
1998	13,260	33,334
1999	14,686	35,726
2000	13,181	31,274
2001	11,880	26,426
2002	12,043	26,531
2003	12,317	26,409

Graph G1

Expenditure on Employment Supports, 1994 to 2003

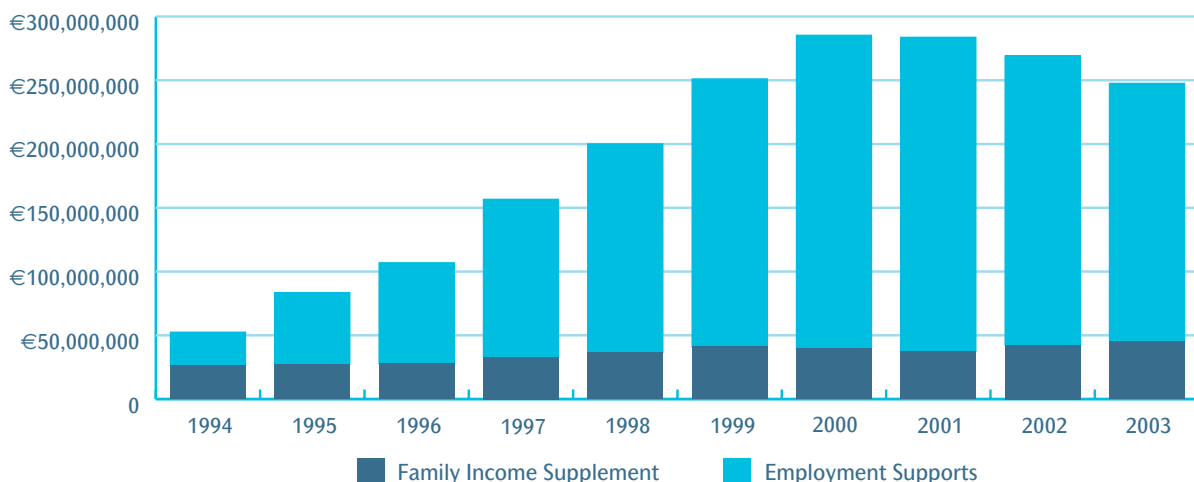


Table G5

Number of Families Receiving Family Income Supplement by Rate of Payment and Family Size, 2003

Weekly Rate (€)	Family Size (Number of Children)						Total
	1	2	3	4	5	6 or more	
10-25	175	83	49	23	9	4	343
26-50	1,262	646	302	130	41	16	2,397
51-75	2,135	1,166	539	220	79	29	4,168
76-100	1,039	983	593	240	105	38	2,998
101-125	176	321	314	196	105	43	1,155
126-150	106	154	134	122	63	31	610
Over 150	63	150	179	109	83	62	646
Total	4,956	3,503	2,110	1,040	485	223	12,317
Number of Children	4,956	7,006	6,330	4,160	2,425	1,532	26,409

Table G6

Number of Families Receiving Family Income Supplement by Age of Recipient and Family Income Group, 2003

Age of Recipient	Family Income Group (Euro per week)									Total
	0-100	101-150	151-200	201-250	251-300	301-350	351-400	401-450	>450	
Under 25 years	-	3	12	32	497	526	105	1	-	1,176
25 to 29 years	-	11	23	51	524	621	201	5	-	1,436
30 to 34 years	-	22	57	105	618	874	366	47	5	2,094
35 to 39 years	-	44	89	161	658	878	473	109	14	2,426
40 to 44 years	1	48	107	197	554	786	468	137	23	2,321
45 to 49 years	-	34	88	142	454	494	282	76	16	1,586
50 to 54 years	-	30	55	80	220	275	112	21	4	797
55 to 59 years	-	13	28	43	131	112	47	8	3	385
60 to 65 years	-	6	8	20	31	14	15	-	-	94
65 years or more	-	-	-	-	1	-	1	-	-	2
Total	1	211	467	831	3,688	4,580	2,070	404	65	12,317

Table G7

Number of Families Receiving Family Income Supplement by Family Status and Income Group, 2003

Family Status	Family Income Group (Euro per week)									Total
	0-100	101-150	151-200	201-250	251-300	301-350	351-400	401-450	>450	
One Parent Family	-	162	327	554	1,196	1,261	899	276	51	4,726
Two Parent Family	1	49	140	277	2,492	3,319	1,171	128	14	7,591
Total	1	211	467	831	3,688	4,580	2,070	404	65	12,317

Table G8

Number of Recipients of Back to Work Allowance by Employment Status and Sex, 2003

Employment Status	Males	Females	Total
Employees	4,851	2,346	7,197
Self-Employed	7,671	2,201	9,872
Total	12,522	4,547	17,069

Table G9

Number of Recipients of Back To Work Enterprise Allowance, Back to Work Allowance, Back to Education Allowance and Farm Assist/Smallholders, by Age and Sex, 2003

Age of Recipient	Back to Work Enterprise Allowance		Back to Work Allowance		Back to Education Allowance		Farm Assist/Smallholders	
	Male	Female	Male	Female	Male	Female	Male	Female
Under 25 years	71	42	94	203	470	526	28	-
25 to 29 years	523	199	543	386	952	747	87	11
30 to 34 years	1,111	464	725	433	551	447	211	30
35 to 39 years	1,297	505	722	362	347	315	469	56
40 to 44 years	1,364	400	765	356	205	299	780	76
45 to 49 years	1,296	292	724	279	143	230	1,117	99
50 to 54 years	1,070	173	634	188	119	134	1,564	106
55 to 59 years	654	87	418	103	56	90	1,884	121
60 to 64 years	258	35	193	33	27	31	1,548	86
65+ years	27	4	33	3	3	4	414	20
Total	7,671	2,201	4,851	2,346	2,873	2,823	8,102	605

Table G10

Number of Recipients of Farm Assist/Smallholders, 1994 to 2003⁽¹⁾

Year	Recipients
1994	10,071
1995	9,912
1996	9,004
1997	8,031
1998	6,578
1999	7,874
2000	8,051
2001	8,380
2002	8,514
2003	8,707

(1) Farm Assist was introduced in April 1999. The number of recipients at the end of 2003 is the number of persons in receipt of a Farm Assist or Smallholders payment. The source of the data for the period 1994 to 1998 is the Central Statistics Office. This data is the number of persons claiming Smallholders Unemployment Assistance and includes claims awaiting decision or not otherwise in payment. From 1999 onward only claims in payment are shown

Table G11

Number of Recipients of Employment Supports by County, 2003

County	Family Income Supplement	Back to Work Allowance Employee	Back to Education Allowance	Back to Work Allowance Self-Employed	Farm Assist/Smallholders	Part Time Job Incentive Scheme ⁽¹⁾
Carlow	206	113	103	121	71	5
Cavan	231	70	18	113	313	7
Clare	288	107	105	299	464	2
Cork	1,049	770	693	1,062	596	30
Donegal	824	613	356	681	1,220	9
Dublin	2,921	1,916	1,442	2,301	11	84
Galway	462	382	562	684	897	2
Kerry	445	252	173	413	698	8
Kildare	292	236	161	288	50	9
Kilkenny	243	90	65	166	127	8
Laois	176	100	29	107	94	2
Leitrim	76	65	30	119	260	4
Limerick	510	272	324	324	221	18
Longford	146	125	54	119	113	1
Louth	545	183	202	316	64	17
Mayo	384	315	215	369	1,650	38
Meath	323	125	71	172	60	5
Monaghan	228	100	65	225	408	3
Offaly	239	88	37	140	81	9
Roscommon	130	85	43	178	348	1
Sligo	185	115	137	167	369	8
Tipperary	627	259	220	351	226	10
Waterford	503	165	226	298	49	10
Westmeath	197	147	83	223	89	7
Wexford	716	276	149	313	174	15
Wicklow	315	228	129	323	54	12
Other	56	-	4	-	-	-
Total	12,317	7,197	5,696	9,872	8,707	324

(1) Based on the number of recipients at each Social Welfare Local Office



Section H

supplementary welfare allowance

Section H: Supplementary Welfare Allowance

This section relates to payments made under the Supplementary Welfare Allowance scheme and includes:

- Basic Supplementary Welfare Allowance payments
- Rent supplements and Mortgage Interest supplements
- Other supplements
- Exceptional Needs Payments and Urgent Needs Payments
- The Back to School Clothing and Footwear Allowance scheme

Expenditure and Recipients

Expenditure on Supplementary Welfare Allowance amounted to over €587 million in 2003. This represents an increase of 21.2% on 2002. Expenditure on Rent Supplements rose by over €79 million in 2003, an increase of 31.4%. The number of recipients of Rent Supplement at the end of 2003 was 59,976, an increase of 10.6% on 2002.

Expenditure on Mortgage Interest Supplements rose to over €7.6 million, an increase of 0.1%. The number of recipients at the end of 2002 decreased to 3,933, a decrease of 9.8%.

In 2003, a Back to School Clothing and Footwear Allowance was paid in respect of 172,123 children, an increase of 16,312 on 2002. Expenditure on the scheme increased by 16.3% to nearly €18 million.

Net expenditure on Basic SWA payments in 2003 was € 160 million, an increase of 10.6% on 2002. Table H3 shows gross expenditure (€215 million) on Basic SWA payments in 2003. This represents the gross amount of expenditure on such Basic SWA payments before inter scheme adjustments and refunds have been taken into account. There were 31,217 recipients of Basic SWA payments at the end of 2003, a decrease of 856 on 2002.

Table H2 and Graph H1 show expenditure on Supplementary Welfare Allowance from 1994 to 2003.

Table H1

Expenditure on Supplementary Welfare Allowance by Scheme, 2002 and 2003

Type of Payment	2002 €000	2003 ⁽¹⁾ €000	Change 2003 over 2002
SOCIAL ASSISTANCE			
Basic SWA Payments	145,125	160,488	10.6%
Rent Supplements	252,203	331,471	31.4%
Mortgage Interest Supplements	7,658	7,663	0.1%
Other Supplements	12,519	15,043	20.2%
Exceptional Needs & Urgent Needs Payments	52,195	55,431	6.2%
Back to School Clothing and Footwear	15,229	17,717	16.3%
Total	484,929	587,813	21.2%

(1) Provisional.

Table H2

Expenditure on Supplementary Welfare Allowance Scheme, 1994 to 2003

Year	Expenditure €000
1994	137,266
1995	151,783
1996	173,583
1997	200,190
1998	223,059
1999	239,721
2000	294,906
2001	363,576
2002	484,929
2003 ⁽¹⁾	587,813

(1) Provisional.

79

Graph H1

Expenditure on Supplementary Welfare Allowance, 1993 to 2002

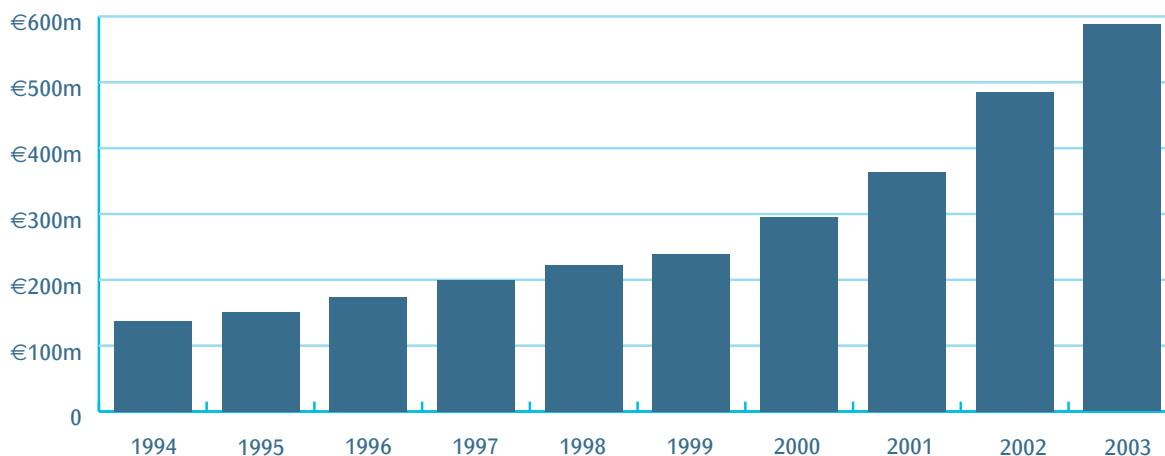


Table H3

Gross Expenditure on Supplementary Welfare Allowance by Health Board Region, 2003

Type of Supplementary Welfare Allowance	Eastern €000	Midland €000	Mid-Western €000	North Eastern €000	North Western €000	South Eastern €000	Southern €000	Western €000	Total €000
Basic Payments⁽¹⁾	98,738	10,102	13,719	17,981	8,189	20,637	25,169	20,626	215,162
Supplements									
Rent	176,497	11,158	18,767	15,962	9,364	28,553	41,531	29,638	331,471
Local Authority Mortgage	446	20	65	26	23	113	137	108	938
Other Mortgage	3,227	171	417	518	167	626	1,135	464	6,725
Heating	234	80	570	28	11	163	486	45	1,616
Diet	3,236	379	520	423	172	852	1,070	390	7,041
Other	2,413	72	625	139	19	834	1,534	751	6,386
Exceptional Needs Payments	24,852	1,645	4,579	1,886	2,569	6,701	8,292	4,728	55,253
Urgent Needs Payments	44	7	68	3	5	30	12	8	178
Administration Costs⁽²⁾	15,067	3,060	3,526	3,278	2,103	3,828	8,795	3,769	43,425
Grand Total⁽³⁾	324,754	26,694	42,855	40,242	22,623	62,339	88,161	60,527	668,195

Note: It should be noted that some of the totals are not equal to the sum of the parts. This is due to rounding.

(1) This is the gross expenditure on Basic Payments before inter scheme adjustments and refunds are taken into account.

(2) Administration costs are incurred directly by the Health Boards and re-imbursed subsequently by the Department. The table shows the level of expenditure incurred.

(3) These totals are not the final outturn because inter scheme adjustments and refunds are not reflected.

Table H4

Expenditure on Exceptional Needs Payments, Other Exceptional Supplementary Welfare Allowance Payments and Urgent Needs Payments, 2003

Type of Payment	Expenditure €000	Total Expenditure €000
Exceptional Needs Payments and Other Exceptional SWA Payments		
Housing		
Rent Deposit	8,216	
Household Appliances	6,401	
New Accommodation Kit	6,036	
Furniture	3,021	
Floor Covering	2,288	
Bedding	1,719	
Repair/maintenance	1,086	28,766
Clothing		
Adult Clothing	5,444	
Child Clothing	2,291	7,735
Funeral		
Funeral Expenses	1,981	
Burial Expenses	383	2,365
Child Related		
Pram/Buggy	1,659	
Cot	1,082	2,741
Bills		
Rent/Mortgage Interest Arrears	3,492	
Household	1,081	4,573
Illness		
Confinement Costs	920	
Hospital Requirements	283	1,203
General		
Other ⁽¹⁾	3,770	
Travel Costs	1,996	
Insufficient Means	1,281	
Heating	577	
Lost/Stolen Money	157	
Household Budget	90	7,871
Urgent Needs Payments	178	178
GRAND TOTAL		55,431

(1) This includes €0.35m in payments in respect of homeless people made on behalf of local authorities and subsequently re-imbursed. It should be noted that some of the totals are not equal to the sum of the parts. This is due to rounding.

Table H5

Number of Recipients of Supplementary Welfare Allowance by Health Board Region, 2003

Type of Supplementary Welfare Allowance	ERHA ⁽¹⁾	Midland	Mid-Western	North Eastern	North Western	South Eastern	Southern	Western	Total
Basic Payment									
Recipients									
Qualified Adults	13,861	1,353	2,214	2,556	1,228	3,115	3,917	2,973	31,217
Qualified Children	3,714	376	388	719	261	611	963	743	7,775
	11,237	1,494	1,509	2,551	859	2,342	2,909	2,364	25,265
Total Beneficiaries	28,812	3,223	4,111	5,826	2,348	6,068	7,789	6,080	64,257
Supplements									
Rent	25,523	2,319	4,348	3,374	2,738	6,190	8,985	6,499	59,976
Local Authority Mortgage	329	21	54	32	27	102	113	94	772
Other Mortgage	1,385	74	230	268	119	325	482	278	3,161
Heating	471	180	1,127	50	19	302	828	71	3,048
Diet	5,994	793	1,098	903	339	1,753	1,988	709	13,577
Other ⁽²⁾	2,634	155	437	293	16	624	1,320	494	5,973

(1) Refers to Eastern Regional Health Authority.

(2) Includes Creche, MABS, Other etc.

Table H6

Number of Recipients of Basic SWA, Rent Supplement, Mortgage Interest Supplement, Local Authority Mortgage Interest Supplement and Other Supplements, 2002 and 2003

Type of Payment	2002	2003	Change 2003 over 2002
Basic Payments	32,073	31,217	-2.7%
Rent Supplements	54,213	59,976	10.6%
L.A. Mortgage Interest Supplements (1)	1,063	772	-27.4%
Mortgage Interest Supplements	3,296	3,161	-4.1%
Other Supplements (2)	19,599	22,598	15.3%
Total	110,244	117,724	6.8%

(1) Local Authority Mortgage

(2) Includes Diet, Other, Travel, etc.

Table H7

Number of Recipients of Basic SWA, Rent Supplement, Mortgage Interest Supplement and Local Authority Mortgage Interest Supplement and Other Supplements(1) by Age and Sex, 2003

Age Group	Basic SWA			Rent Supplement			Mortgage Interest Supplement			Local Authority Mortgage Interest Supplement			Other Supplements ⁽¹⁾		
	Male	Female	Total	Male	Female	Total	Male	Female	Total	Male	Female	Total	Male	Female	Total
Under 20	1,206	1,531	2,737	367	1,388	1,755	-	-	-	-	-	-	176	245	421
20 - 24	2,810	2,723	5,533	2,355	8,143	10,498	9	16	25	-	4	4	226	815	1,041
25 - 29	3,279	2,960	6,239	4,307	7,669	11,976	68	67	135	8	15	23	472	1,285	1,757
30 - 34	3,172	2,654	5,826	4,754	5,928	10,682	243	205	448	17	21	38	629	1,226	1,855
35 - 39	2,323	1,554	3,877	3,891	3,530	7,421	355	313	668	35	33	68	689	930	1,619
40 - 44	1,566	836	2,402	2,835	2,116	4,951	418	269	687	72	51	123	732	790	1,522
45 - 49	1,124	597	1,721	2,232	1,381	3,613	286	170	456	99	59	158	710	730	1,440
50 - 54	912	466	1,378	1,897	1,069	2,966	220	141	361	100	41	141	994	864	1,858
55 - 59	527	295	822	1,450	754	2,204	148	81	229	80	35	115	1,143	1,082	2,225
60 - 64	267	143	410	941	469	1,410	76	32	108	52	24	76	1,237	1,083	2,320
65 - 69	149	70	219	582	347	929	17	15	32	10	9	19	1,186	1,229	2,415
70 plus	25	28	53	620	951	1,571	6	6	12	1	6	7	1,505	2,620	4,125
Total	17,360	13,857	31,217	26,231	33,745	59,976	1,846	1,315	3,161	474	298	772	9,699	12,899	22,598

(1) Includes Diet, Other, Travel, etc.

Table H8

Number of Recipients of Rent Supplement, Mortgage Interest Supplement and Local Authority Mortgage Interest Supplement by Primary Payment, 2003

Payment Type	Rent Supplement	Mortgage Interest Supplement	Local Authority Mortgage Interest Supplement
Old Age Pensions	1,415	10	3
Pre-Retirement Allowance	331	8	12
Widows and Widower's Pensions	350	27	24
One-Parent Family Payment	12,956	334	105
Invalidity Pension	1,011	115	64
Disability Benefit	1,637	499	46
Disability Allowance	5,708	215	92
Long-Term Unemployment Assistance	7,155	313	161
Short-Term Unemployment Assistance	5,038	244	24
Unemployment Benefit	3,557	516	69
Supplementary Welfare Allowance	14,146	435	46
Employment Support Services ⁽¹⁾	3,760	206	71
DSS (UK)	353	5	1
Other	2,559	234	54
Total	59,976	3,161	772

(1) Includes Back to Work Allowance, Community Employment, Back to Education Allowance, VTOS and FÁS

Table H9

Number of Recipients of Rent Supplement, Mortgage Interest Supplement and Local Authority Mortgage Interest Supplement by Claim Duration, 2003⁽¹⁾

Months ⁽²⁾	Rent Supplement	Mortgage Interest Supplement	Local Authority Mortgage Interest
0 to 3	9,356	248	20
3 to 6	10,551	448	48
6 to 9	7,609	353	31
9 to 12	6,428	310	43
12 to 24	12,564	750	116
24 to 36	4,706	405	93
36 to 48	2,763	229	55
48 to 60	2,495	151	80
60 to 72	1,704	108	79
72 plus	1,800	159	207
Total⁽¹⁾	59,976	3,161	772

(1) This represents unbroken continuous claims only. Where recipients change address, the claim at the new address may be recorded as a new claim and the duration spent at the previous address may not be taken into account in these statistics

(2) Claims with duration of precisely 3 months are recorded under the 3-6 months heading, claims with duration of precisely 6 months are recorded under the 6-9 months heading and so on.

Table H10

Number of Recipients of Back to School Clothing & Footwear Allowance by Health Board Region, 2003

Health Board	Age 2 to 11	Age 12 to 17	Age 18 to 22	Total
Eastern Regional Health Authority	43,475	14,221	1,275	58,971
Midland Health Board	7,068	4,014	376	11,458
Mid Western Health Board	8,155	4,659	558	13,372
North Eastern Health Board	8,664	5,108	631	14,403
North Western Health Board	7,760	5,308	881	13,949
South Eastern Health Board	11,207	7,136	854	19,197
Southern Health Board	13,030	8,197	1,407	22,634
Western Health Board	9,790	6,832	1,517	18,139
Total	109,149	55,475	7,499	172,123

Table H11

Expenditure on Back to School Clothing & Footwear Allowance by Health Board Region, 2002 and 2003

Health Board	2002 ⁽¹⁾ €000	2003 ⁽¹⁾ €000
Eastern Regional Health Authority Area	4,277	5,104
Midland Health Board	974	1,088
Mid Western Health Board	1,328	1,508
North Eastern Health Board	1,369	1,555
North Western Health Board	1,354	1,571
South Eastern Health Board	1,953	2,221
Southern Health Board	2,112	2,593
Western Health Board	1,861	2,078
Total Expenditure	15,229	17,717

(1) It should be noted that some of the totals are not equal to the sum of the parts. This is due to rounding.

Table H12

Number of Recipients of Basic Supplementary Welfare Allowance Payments by Category, 2003

Interim Basic SWA Payments	No of Payments	
Pending Unemployment Assistance	3,492	
Pending Unemployment Assistance Appeal	561	
Pending Unemployment Benefit	762	
Pending Unemployment Benefit Appeal	39	
Pending Disability Allowance	2,965	
Pending Disability Benefit	1,860	
Pending Disability Benefit Appeal	77	
Pending Old Age Pension	150	
Pending Survivors Pension	100	
Pending Carers Allowance	202	
Pending Occupational Injuries Benefit	61	
Pending One Parent Family Payment	3,992	
Pending Other Social Welfare Payments	640	
Sub-Total		14,901
Other Basic SWA Payments		
Sick No Benefit	2,318	
Other Increment to Scale	252	
Other(1)	13,746	
Sub-Total		16,316
Total		31,217

(1) This category includes payments to persons who do not qualify for other Social Welfare payments and whose means are below the appropriate SWA rates.

Table H13

Number of Recipients of Rent Supplement by Duration⁽²⁾ and by Primary Payment, 2003

Duration in Months	0 to 3 ⁽³⁾	3 to 6	6 to 9	9 to 12	12 to 18	18 to 24	24 to 30	30 to 36	36 to 48	48 to 60	60 to 72	72 plus	TOTAL
Payment Type⁽⁴⁾													
Old Age Pensions	78	108	93	82	151	87	79	97	138	163	116	223	1,415
Pre-Retirement Allowance	5	16	8	15	18	7	6	10	41	62	69	74	331
Widows and Widower's Pensions	30	42	33	30	36	43	20	26	35	19	12	24	350
One-Parent Family Payment	1,744	2,223	1,829	1,437	1,801	1,118	610	430	623	581	347	213	12,956
Invalidity Pension	88	92	58	54	81	78	64	47	93	115	108	133	1,011
Disability Benefit	312	319	206	193	193	134	69	60	52	52	22	25	1,637
Disability Allowance	727	753	556	483	623	449	301	242	382	384	379	429	5,708
Long-Term Unemployment Assistance	1,238	1,265	821	604	823	484	315	227	328	361	327	362	7,155
Short-Term Unemployment Assistance	1,045	1,102	760	517	631	332	200	120	159	95	45	32	5,038
Unemployment Benefit	836	941	501	374	384	184	118	56	56	48	26	33	3,557
Supplementary Welfare Allowance	2,298	2,459	2,013	2,003	2,368	1,165	596	398	473	268	72	33	14,146
Employment Support Services ⁽¹⁾	490	694	354	353	506	308	222	158	240	219	124	92	3,760
DSS (UK)	29	49	27	30	41	35	34	27	24	21	10	26	353
Other	436	488	350	253	308	176	100	74	119	107	47	101	2,559
Total	9,356	10,551	7,609	6,428	7,964	4,600	2,734	1,972	2,763	2,495	1,704	1,800	59,976

(1) Includes Back to Work Allowance, Community Employment, Back to Education Allowance, VTOS and FÁS.

(2) This represents unbroken continuous claims only. Where recipients change address, the claim at the new address may be recorded as a new claim and the duration spent at the previous address may not be taken into account in these statistics.

(3) Claims with duration of precisely 3 months are recorded under the 3-6 months heading, claims with duration of precisely 6 months are recorded under the 6-9 months heading and so on.

(4) The recipient may not necessarily have been in receipt of the same Primary Payment for the duration of the Rent Supplement claim.

Table H14

Number of Recipients of Rent Supplement by Age and by Duration⁽¹⁾, 2003

Duration in Months	0 to 3 ⁽²⁾	3 to 6	6 to 9	9 to 12	12 to 18	18 to 24	24 to 30	30 to 36	36 to 48	48 to 60	60 to 72	72 plus	TOTAL
Age Group													
Under 20	607	510	319	155	123	36	3	2	-	-	-	-	1,755
20 - 24	2,255	2,515	1,725	1,267	1,328	630	297	178	190	92	19	2	10,498
25 - 29	2,103	2,351	1,614	1,455	1,806	952	460	311	446	281	133	64	11,976
30 - 34	1,519	1,877	1,404	1,279	1,638	894	538	350	448	370	223	142	10,682
35 - 39	1,033	1,180	943	853	1,074	601	407	258	397	323	197	155	7,421
40 - 44	637	750	552	474	649	431	275	233	303	279	172	196	4,951
45 - 49	451	469	360	320	431	321	223	161	243	249	195	190	3,613
50 - 54	333	353	273	241	324	250	164	145	188	244	216	235	2,966
55 - 59	195	243	171	159	224	204	140	103	167	199	191	208	2,204
60 - 64	90	124	96	75	123	123	84	67	143	148	150	187	1,410
65 - 69	62	76	49	66	92	62	57	47	84	112	80	142	929
70 plus	71	103	103	84	152	96	86	117	154	198	128	279	1,571
Total	9,356	10,551	7,609	6,428	7,964	4,600	2,734	1,972	2,763	2,495	1,704	1,800	59,976

(1) This represents unbroken continuous claims only. Where recipients change address, the claim at the new address may be recorded as a new claim and the duration spent at the previous address may not be taken into account in these statistics

(2) Claims with duration of precisely 3 months are recorded under the 3-6 months heading, claims with duration of precisely 6 months are recorded under the 6-9 months heading and so on.

Table H15

Number of Recipients of Basic SWA, Rent Supplement, Mortgage Interest Supplement and Local Authority Mortgage Interest Supplement and Other Supplements⁽¹⁾ by County, 2003

County	Basic SWA	Rent Supplement	Mortgage Interest Supplement	Local Authority Mortgage Interest Supplement	Other Supplements ⁽¹⁾
Carlow	456	849	30	9	247
Cavan	202	435	49	16	289
Clare	782	1,228	56	7	427
Cork	2,917	7,257	392	100	3,107
Donegal	954	1,976	95	18	225
Dublin	12,204	21,769	1,098	293	7,994
Galway	1,934	4,236	138	28	703
Kerry	1,000	1,728	90	13	1,029
Kildare	1,112	2,263	148	25	588
Kilkenny	517	771	47	39	262
Laois	344	491	15	3	315
Leitrim	121	203	7	2	57
Limerick	1,148	2,359	123	36	1,937
Longford	281	427	14	7	152
Louth	1,054	1,872	85	6	351
Mayo	731	1,713	97	52	359
Meath	1,066	690	101	2	462
Monaghan	234	377	33	8	144
Offaly	245	425	16	4	368
Roscommon	308	550	43	14	212
Sligo	153	559	17	7	92
Tipperary	840	1,907	119	27	1,281
Waterford	953	1,563	61	19	544
Westmeath	483	976	29	7	293
Wexford	633	1,861	119	19	643
Wicklow	545	1,491	139	11	517
Total	31,217	59,976	3,161	772	22,598

(1) Includes Diet, Other, Travel, etc.



Section J

miscellaneous payments and grants

Section J: Miscellaneous Payments and Grants

This programme group contains details of a range of payments and services provided by the Department of Social and Family Affairs, including:

- Treatment Benefits
- Household Benefits and Free Travel
- Bereavement Grants
- Redundancy and Insolvency Payments
- Money Advice and Budgeting Service
- Family Resource Centre Programme
- Grants for Marriage, Child and Bereavement Counselling Services

Also included in this Section are details of methods of payments for benefits and allowances which are processed by the Department of Social and Family Affairs on a day to day basis.

92

Responsibility for the administration of schemes under Voluntary and Community Organisations, Island Development Programme and Community Development Programme were transferred to the Department of Community, Rural and Gaeltacht Affairs with effect from 25 June 2002.

Graph J1

Expenditure on Household Benefits and Free Travel, 2003

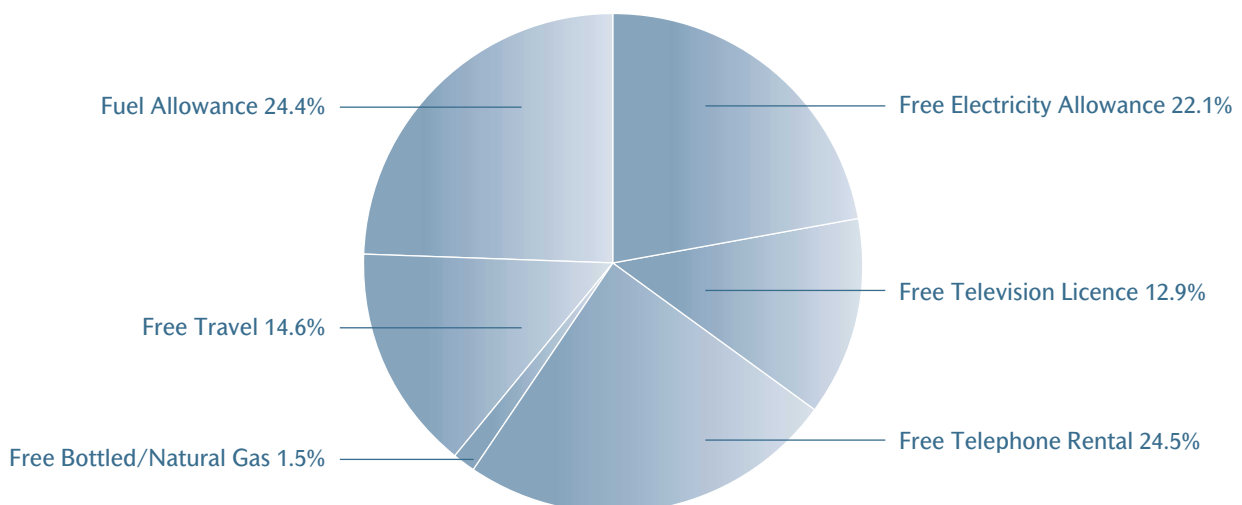


Table J1

Expenditure on Miscellaneous Payments and Grants by Payment Type, 2002 and 2003

Type of Payment	2002 €000	2003 ⁽¹⁾ €000	Change %
Household Benefits and Free Travel	296,043	340,514	15.0%
Treatment Benefit	60,796	63,348	4.2%
Bereavement Grants	12,224	12,288	0.5%
Rent Allowance	666	675	1.4%
Equal Treatment Payments	17	5	-70.6%
Redundancy and Insolvency ⁽²⁾	58,713	98,182	67.2%
Combat Poverty Agency	4,771	5,304	11.2%
School Meals	2,023	3,293	62.8%
Programme for Peace and Reconciliation	919	-	-
Comhairle	16,289	17,011	4.4%
Family Support Agency ⁽⁴⁾	-	6,549	-
Grants for Marriage & Family Counselling Services	6,717	7,009	4.3%
Grants for Community and Family Support Groups ⁽³⁾	14,852	2,425	-83.5%
Money Advice and Budgeting Service	9,287	9,405	1.3%
Scheme of Community Support for Older People ⁽³⁾	17	-	-
Other Grants/Payments	2,547	5,205	104.4%
Total	485,881	571,213	17.6%

(1) Provisional

(2) These schemes are administered by the Department of Enterprise, Trade and Employment.

(3) Responsibility for the administration of these schemes transferred to the Department of Community, Rural and Gaeltacht Affairs with effect from 25 June 2002. Expenditure figure shown refers to period up to 24 June 2002.

(4) The Family Support Agency was established in May 2003.

Table J2

Total Expenditure on Household Benefits and Free Travel, 1994 to 2003

Year	Free Electricity Allowance	Free Television Licence	Free Telephone Rental	Free Bottled Gas	Free Natural Gas	Free Travel	Fuel Allowance	Total
	€000	€000	€000	€000	€000	€000	€000	€000
1994	31,771	12,311	25,137	97	654	37,535	50,666	158,171
1995	33,060	13,181	29,449	88	712	39,697	54,276	170,464
1996	34,658	15,724	31,256	81	1,044	40,680	56,298	179,740
1997	36,916	18,133	34,362	84	1,122	41,085	57,070	188,772
1998	38,595	19,535	36,746	69	1,345	41,432	57,004	194,724
1999	39,443	19,093	37,991	74	1,602	42,791	55,809	196,803
2000	40,185	20,199	41,660	88	1,918	44,817	55,487	204,354
2001	51,275	24,773	55,335	99	2,517	45,860	61,136	240,995
2002	62,648	30,967	72,887	108	3,276	45,625	80,532	296,043
2003 ⁽¹⁾	75,402	43,801	83,258	120	4,905	49,820	83,208	340,514

(1) Provisional.

Table J3

Miscellaneous Benefits and Allowances: Number of Claims Awarded, 2002 and 2003

Type of Payment	2002	2003	Change 2003 over 2002
Bereavement Grants	21,745	21,124	-2.9%
Treatment Benefit:			
Dental	427,707	411,264	-3.8%
Optical	177,114	164,277	-7.2%
Medical and Surgical	4,401	5,262	19.6%
Rent Allowance	16	13	-18.8%
Fuel Allowance ⁽¹⁾	259,000	270,000	4.2%

(1) Refers to the average number of recipients of Fuel Allowance in 2003. There was an average of 115,000 recipients of a Smokeless Fuel Allowance in 2002 and an average of 118,000 recipients in 2003.

Table J4

Number of Recipients of Household Benefits and Free Travel by Type of Payment Received, 2003

Type of Payment	Free Electricity Allowance	Free Television Licence ⁽¹⁾	Free Telephone Rental	Free Bottled Gas	Free Natural Gas	Free Travel ⁽²⁾
Old Age (Contributory) Pension	50,824	55,636	54,208	31	5,510	89,895
Old Age (Non-Contributory) Pension	44,450	48,659	43,322	111	866	85,592
Retirement Pension	49,633	54,332	51,991	38	5,655	79,235
Widow/er's (Contributory) Pension	48,270	52,840	51,800	9	4,590	65,353
Widow/er's (Non-Contributory) Pension	9,777	10,703	9,828	17	207	13,340
Invalidity Pension	17,855	19,546	16,932	24	1,665	44,795
Deserted Wives Allowance	322	352	342	-	27	520
Deserted Wives Benefit	436	477	498	-	71	768
One Parent Family Payment	63	69	55	-	3	402
Occupation Injury Benefit	241	264	263	-	31	302
Free Fuel	1,897	2,077	1,920	2	27	1,809
Blind Pensions	680	744	652	3	34	1,961
No Active Pension	22,686	24,834	27,393	27	2,398	170,429
Garda Widow's Pension ⁽³⁾	127	139	191	-	10	1,330
Carer's Allowance	8,431	9,229	9,493	25	572	20,375
Disability Allowance	17,231	18,862	14,625	131	878	76,620
British Pension ⁽³⁾	3,492	3,823	4,460	8	137	5,245
Others	1,278	1,399	1,513	2	101	2,860
Total	277,693	303,985	289,486	428	22,782	660,831

(1) Refers to the number of Licences issued.

(2) Refers to the number of persons in respect of whom travel passes have been issued.

(3) These Pensions are not administered by the Department of Social and Family Affairs.

Table J5

Number of Recipients of Social Welfare Payments by Payment Type and Method of Payment, 2003

Type of Payment	Personalised Payable Order	Post Draft	Cheque	Electronic Fund Transfer	Total
Old Age (Contributory) Pension	60,574	-	1,334	52,062	113,970
Retirement Pension	66,212	-	307	19,990	86,509
Old Age (Non-Contributory) Pension	78,575	-	48	8,110	86,733
Pre-Retirement Allowance	-	8,586	581	1,790	10,957
Widow/er's (Contributory) Pension	76,861	153	1,301	25,516	103,831
Widow/er's (Non-Contributory) Pension	14,955	23	-	805	15,783
Deserted Wife's Benefit	9,995	684	-	660	11,339
Deserted Wife's Allowance	1,448	39	-	36	1,523
Prisoner's Wife's Allowance	2	-	-	-	2
One-Parent Family Payment	57,715	13,683	2	7,896	79,296
Maternity Benefit	-	-	1,708	8,886	10,594
Health and Safety Benefit	-	-	2	10	12
Adoptive Benefit	-	-	3	30	33
Orphan's (Contributory) Allowance	587	-	-	148	735
Orphan's (Non-Contributory) Pension	417	-	-	39	456
Child Benefit (families)	346,063	-	-	187,946	534,009
Disability Benefit	-	1,083	42,478	13,903	57,464
Invalidity Pension	41,604	472	28	11,310	53,414
Disability Allowance	53,556	1,199	49	12,916	67,720
Injury Benefit	-	-	692	129	821
Interim Disability Benefit	-	-	245	50	295
Disablement Benefit	-	-	11,898	-	11,898
Death Benefit	574	-	4	86	664
Carer's Benefit	-	83	-	556	639
Carer's Allowance	19,150	-	-	2,166	21,316
Blind Pension	1,868	-	3	190	2,061
Unemployment Benefit	-	26,777	16,407	26,906	70,090
Unemployment Assistance	-	53,871	5,686	15,692	75,249
Back to Work Allowance					
Employee	39	54	138	6,966	7,197
Back to Work Enterprise Allowance					
Self Employed Years 1 to 4	48	70	176	9,578	9,872
Back to Education Allowance	-	274	20	5,402	5,696
Part-Time Job Incentive Scheme	247	51	25	1	324
Family Income Supplement	9,516	72	170	2,559	12,317
Farm Assist/Smallholders	-	6,492	85	2,130	8,707
Supplementary Welfare Allowance	-	14,061	16,329	827	31,217
Rent Allowance	-	-	342	-	342
Total	840,006	127,727	100,061	425,291	1,493,085



Appendices

Appendix 1: Social Insurance and Social Assistance

The Department of Social & Family Affairs provides a range of payments which can be classified as follows.

Social Insurance

Payments made under the social insurance system are funded, in part, by contributions from employers, employees and the self-employed. Any deficit in the fund is met by Exchequer subvention. Entitlement to social insurance benefits is conditional upon the claimants having a certain number of contributions paid or credited in a specific period of time. The contributions conditions vary according to the different insurance schemes.

Social insurance schemes comprise Old Age (Contributory) Pension, Retirement Pension, Widow's/Widower's (Contributory) Pension, Orphan's (Contributory) Allowance, Deserted Wife's Benefit, Invalidity Pension, Disability Benefit, Carer's Benefit, Unemployment Benefit, Maternity Benefit, Health and Safety Benefit, Adoptive Benefit, Treatment Benefit, Widowed Parent Grant, Bereavement Grants and Household Benefits and Free Travel.

Social Assistance

Social Assistance schemes are financed entirely by the Exchequer. One of the basic requirements to qualify for payment under the social assistance schemes is that the claimant must satisfy a means test.

Social Assistance schemes comprise Old Age (Non-Contributory) Pension, Widow's (Non-Contributory) Pension, Orphan's (Non-Contributory) Pension, Deserted Wife's Allowance, Prisoner's Wife's Allowance, One Parent Family Payment, Unemployment Assistance, Farm Assist, Pre-Retirement Allowance, Supplementary Welfare Allowance, Family Income Supplement, Disability Allowance, Carer's Allowance, Blind Pension, Rent Allowance and Household Benefits and Free Travel.

Child Benefit

Child Benefit is funded entirely by the Exchequer; it is payable in respect of all children regardless of family means.

Appendix 2: Classification of Social Welfare Schemes

1. Old Age

Old Age (Contributory) Pension
 Retirement Pension
 Old Age (Non-Contributory) Pension
 Pre-Retirement Allowance

2. Widows, Widowers and One-Parent Families

Widow/er's (Contributory) Pension
 Deserted Wife's Benefit
 Widow/er's (Non-Contributory) Pension
 Deserted Wife's Allowance
 Prisoner's Wife's Allowance
 One Parent Family Payment
 Widowed Parent Grant

3. Child Related Payments

Maternity Benefit
 Adoptive Benefit
 Health and Safety Benefit
 Orphan's (Contributory) Allowance
 Orphan's (Non-Contributory) Pension
 Child Benefit

4. Illness, Disability and Caring

Disability Benefit
 Invalidity Pension
 Disability Allowance
 Blind Pension
 Carer's Benefit
 Carer's Allowance
 Injury Benefit
 Disablement Benefit
 Death Benefit
 Medical Care

5. Unemployment Supports

Unemployment Benefit
 Unemployment Assistance

6. Employment Supports

Family Income Supplement
 Back to Work Allowance
 Back to Work Enterprise Allowance
 Back to Education Allowance
 Part-Time Job Incentive Scheme
 Farm Assist

7. Supplementary Welfare Allowance

Basic Payments
 Rent and Mortgage Interest Supplements
 Heating and Diet Supplements
 Exceptional and Urgent Needs Payments
 The Back to School Clothing and Footwear Scheme

8. Miscellaneous Payments and Grants

Treatment Benefits
 Household Benefits and Free Travel
 Bereavement Grants
 Money Advice and Budgeting Service
 Family Resource Centre Programme
 Grants for Marriage, Child and Bereavement
 Counselling Services

Appendix 3: Glossary

Recipient:	Person actually receiving a social welfare payment.
Qualified Adult:	Person in respect of whom a Qualified Adult Allowance is paid to the recipient.
Qualified Child:	Child in respect of whom a Qualified Child Increase is paid to the recipient. This allowance is payable at half the rate where a spouse/partner, living with the recipient, is not a Qualified Adult. Each spouse/partner may receive half the Qualified Child Increase where both are in receipt of a social welfare payment.
Beneficiaries:	Total of recipients, qualified adults and qualified children.
Claim/Claimant:	An application/ applicant for a social welfare payment.
Social Insurance Payments:	These comprise Old Age (Contributory) Pension, Retirement Pension, Widow's/Widower's (Contributory) Pension, Orphan's (Contributory) Allowance, Deserted Wife's Benefit, Invalidity Pension, Disability Benefit, Carer's Benefit, Unemployment Benefit, Maternity Benefit, Health and Safety Benefit, Adoptive Benefit, Treatment Benefit, Widowed Parent Grant, Bereavement Grants and Household Benefits and Free Travel.
Social Assistance Payments:	These comprise Old Age (Non-Contributory) Pension, Widow's (Non-Contributory) Pension, Orphan's (Non-Contributory) Pension, Deserted Wife's Allowance, Prisoner's Wife's Allowance, One Parent Family Payment, Unemployment Assistance, Farm Assist, Pre-Retirement Allowance, Supplementary Welfare Allowance, Family Income Supplement, Disability Allowance, Carer's Allowance, Blind Pension, Rent Allowance and Household Benefits and Free Travel.

Index

Where several page numbers are given for a particular subject the principal references are indicated in **bold type**.

A

Accounts **1-22**
 Administration **2, 3, 4**
 Adoptive Benefit **37-44**
 Appendix 1 **98**
 Appendix 2 **99**
 Appendix 3 **100**

B

Back to School Clothing
 & Footwear **77-86**
 Back to Work Allowance **68-76**
 Back to Education Allowance **68-76**
 Back to Work Enterprise
 Allowance **68-76**
 Beneficiaries **9, 13, 16**
 Basic SWA Payments **77-86**
 Bereavement Grant **87-95**
 Blind Pension **45-56**
 British Pension **85, 94**

C

Carer's Allowance **45-56**
 Child Benefit **37-44**
 Child Related Payments **37-44**
 Combat Poverty Agency **5, 93**
 Consumer Price Index **3, 21, 22**
 Current Government Expenditure **3**

D

Death Benefit **45-56**
 Deserted Wife's
 - Allowance **29-36**
 - Benefit **29-36**
 Disability Allowance **45-56**
 Disability Benefit **45-56**
 Disablement Pension **45-56**

E

Employment Support Services **68-76**
 Equal Treatment **4, 93**
 Exceptional Needs Payments **77-86**
 Expenditure **1-22**

F

Family Income Supplement **77-86**
 Farm Assist **77-86**

G

Garda Widow's Pension **94**
 Gross Domestic Product **3**
 Gross National Product **3**

H

Health and Safety Benefit **45-56**
 Health Boards **77-86**
 Household Benefits and Free Travel **87-95**
 - Electricity
 - Gas
 - Telephone Rental
 - Television Licence
 - Travel
 - Fuel Allowance

I

Illness **45-56**
 Injury Benefit **45-56**
 Interim Disability Benefit **45-56**
 Insurability **17, 18**
 Insured Population **17, 18**
 Invalidity Pension **45-56**

L

Labour Force **57-67**
 Live Register **57-67**
 Living Alone Allowance **27, 35, 49**
 Lone Parent's Allowance **29-36**

M

Maternity Benefit **37-44**
 Medical and Surgical Benefit **5, 94**
 Medical Care **45-56**
 Medical Referee System **45-56**
 Miscellaneous Payments and Grants **91-95**
 Money Advice and Budgeting Service **91-95**
 Mortgage Interest Supplement **77-86**

O

Occupational Injuries **43-56**
 Old Age **23-28**
 Old Age (Contributory) Pension **23-28**
 Old Age (Non-Contributory) Pension **23-28**
 One Parent Family Payment **29-36**
 Optical Benefit **5, 94**
 Orphan's Allowance
 - Contributory **37-44**
 - Non-Contributory **37-44**
 Over 80 Allowance **27, 35, 49**

P

Part-Time Job Incentive Scheme **68-76**
 Payment Method **95**
 Pay-Related Benefit **59**
 Pre-Retirement Allowance **23-28**
 Prescribed Relative Allowance **48**
 Prisoner's Wife's Allowance **29-36**

Q

Qualified Adult **100**
 Qualified Child **100**

R

Rates of Payment **19, 20**
 Recipients **1-22**
 Redundancy & Insolvency **4**
 Rent Allowance **4, 94**
 Rent Supplement **77-86**
 Retirement Pension **23-28**

S

School Meals **93**
 Self-Employed **17, 18, 57-76**
 Short-Time Workers **57-68**
 Social Assistance **6, 11, 14, 98, 100**
 Social Insurance **6, 11, 14, 98, 100**
 Smallholders **68-76**
 Standardised Unemployment Rate **57-68**
 Students Summer Jobs Scheme **69-76**
 Supplementary Welfare Allowance **77-90**

T

Treatment Benefits **5, 94**

U

Unemployment **57-68**
 Unemployment Assistance **57-68**
 Unemployment Benefit **57-68**

V

Voluntary Contributors **17**

W

Widow/er's (Contributory) Pension **29-36**
 Widow/er's (Non-Contributory) Pension **29-36**
 Widowed Parent Grants **4, 31**