



Prepared for
The Moore Street Consultative Group
by
Paul Arnold Architects
November 2016

MOORE STREET SELECTED EXTERNAL PHOTOGRAPHS

General external views



P2.1 Moore Street



P2.2 Moore Lane

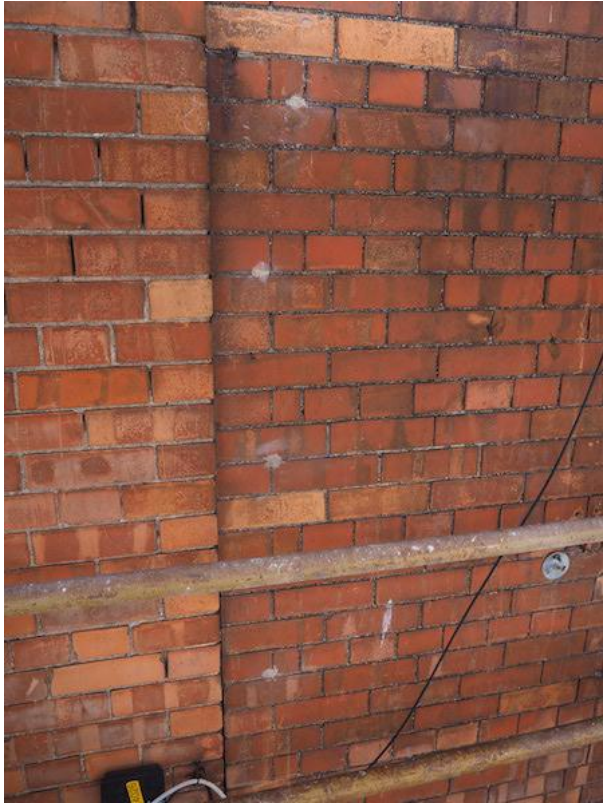


P2.3 Moore Lane



P2.4 Moore Lane

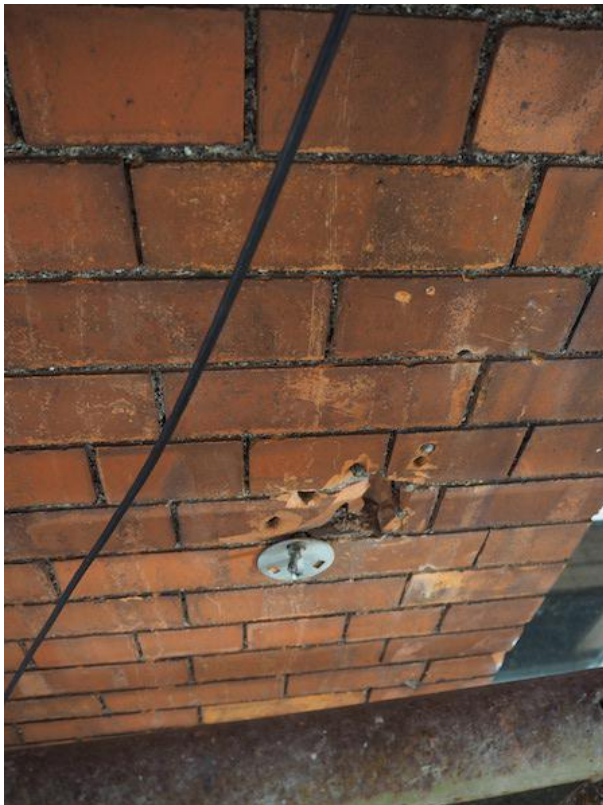
Views of front façade from 1-floor scaffold – consideration of banner installation & removal



P3.1 The repaired holes are visible every fourth or fifth course



P3.2



P3.3 Generations of signs and other objects have been fixed to the facades over time, leaving damage in their wake



P3.4



P4.1



P4.2 This plaque is to be retained in position



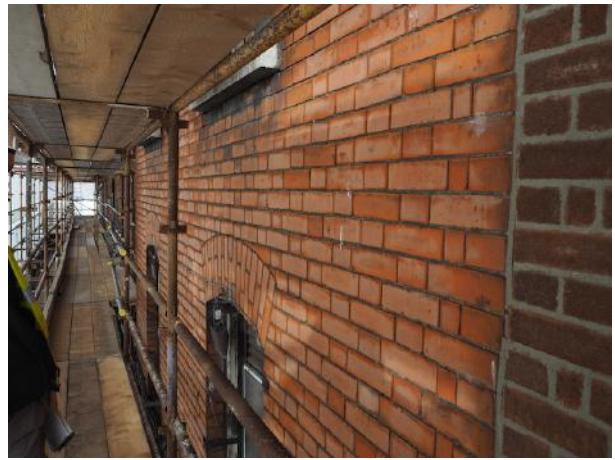
P4.3



P4.4

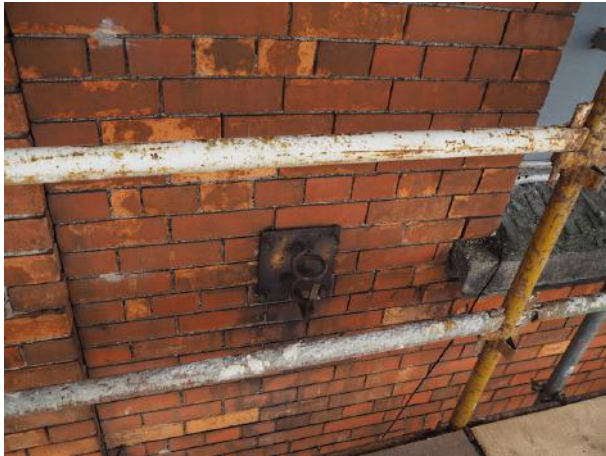


P4.5



P4.6

Views of front façade from 2- floor scaffold– consideration of banner installation & removal



P5.1



P5.2



P5.3



P5.4



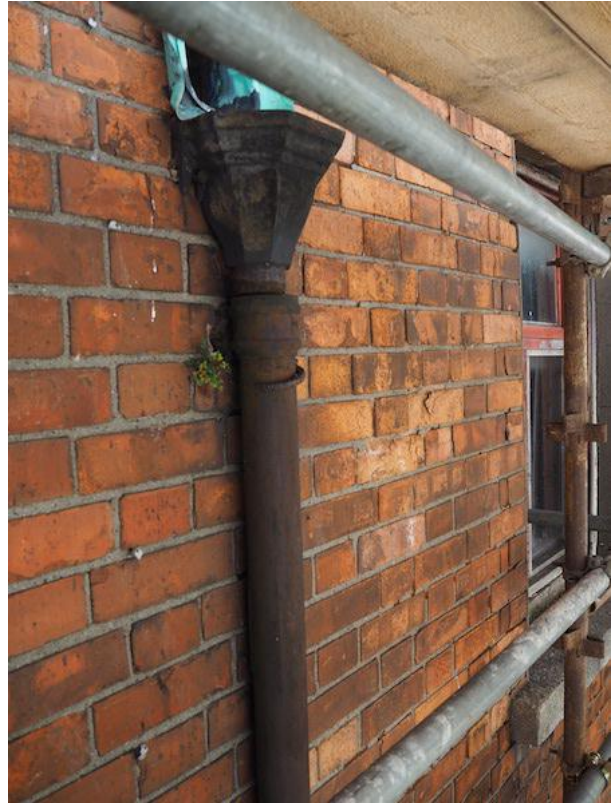
P5.5



P5.6



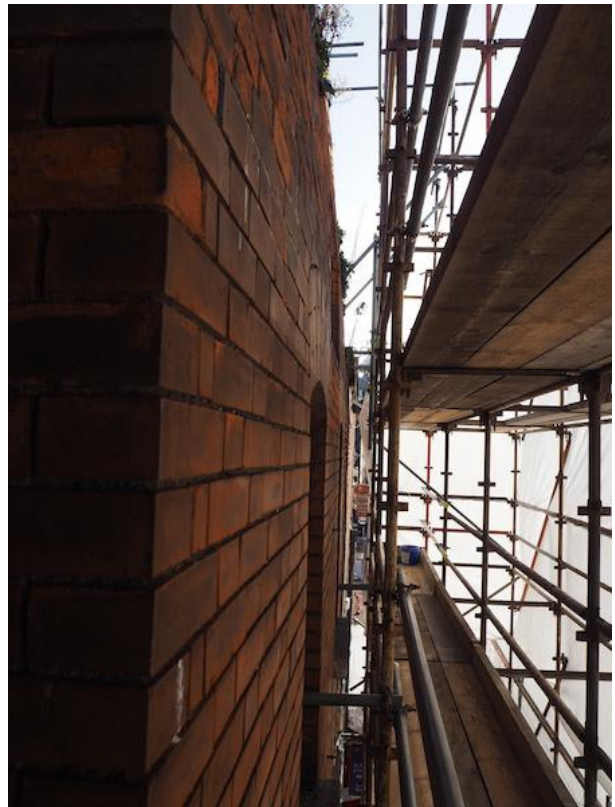
P6.1 Many bricks have lost their protective 'fire-skin', leaving them prone to more rapid decay



P6.2



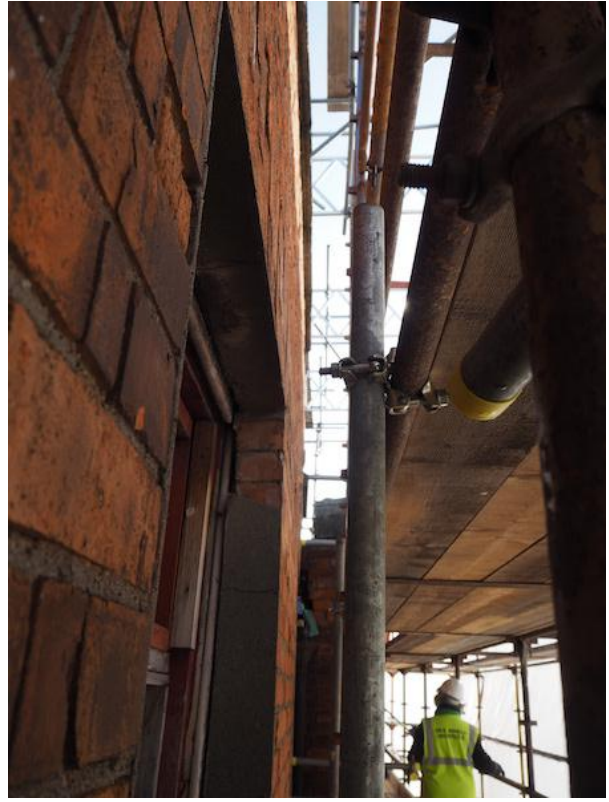
P6.3



P6.4

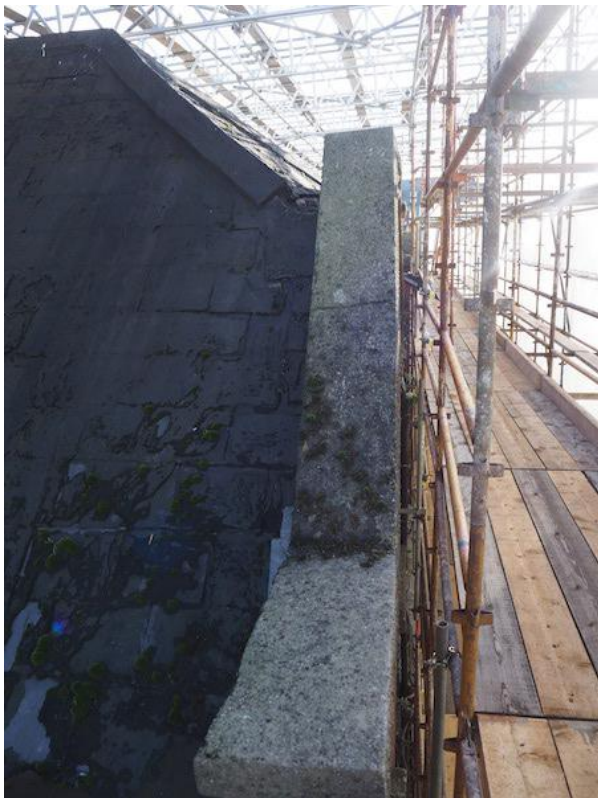


P7.1

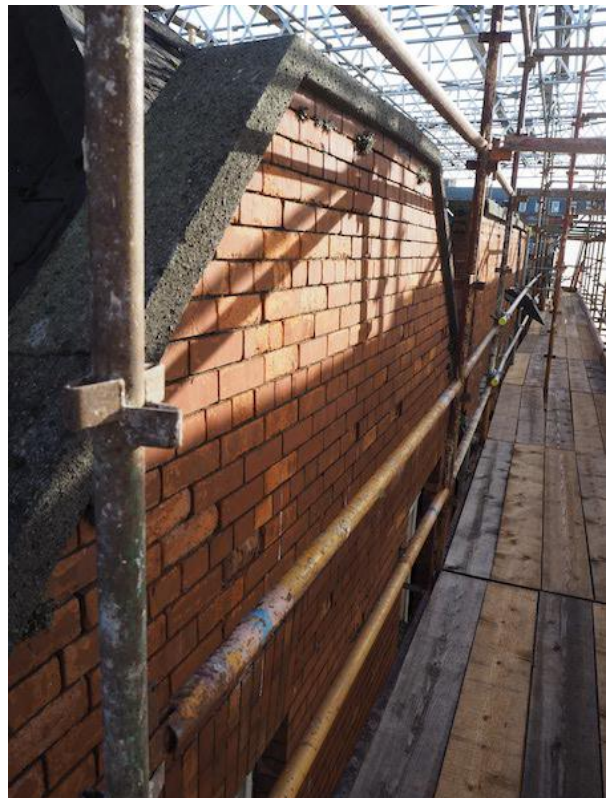


P7.2

Views of front roof faces and parapets – Moore Street



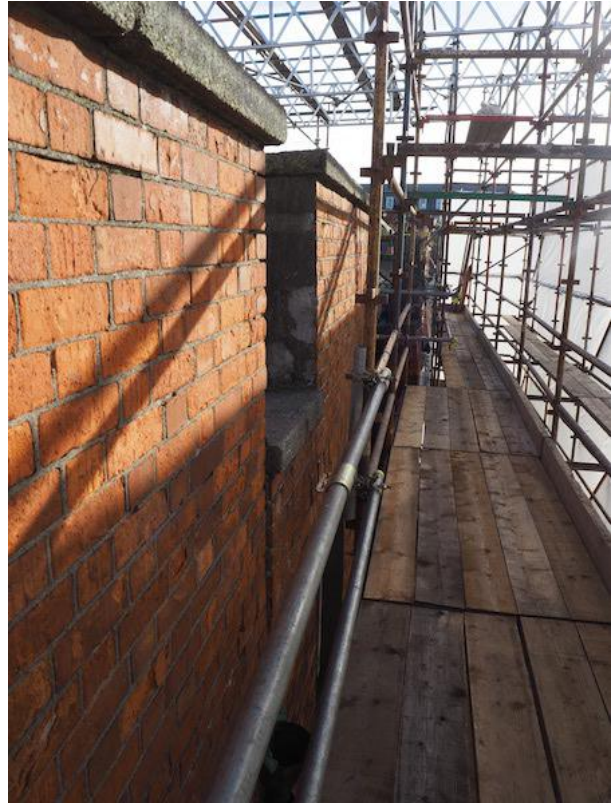
P7.3 The barges are of concrete.



P7.4



P8.1



P8.2



P8.3



P8.4



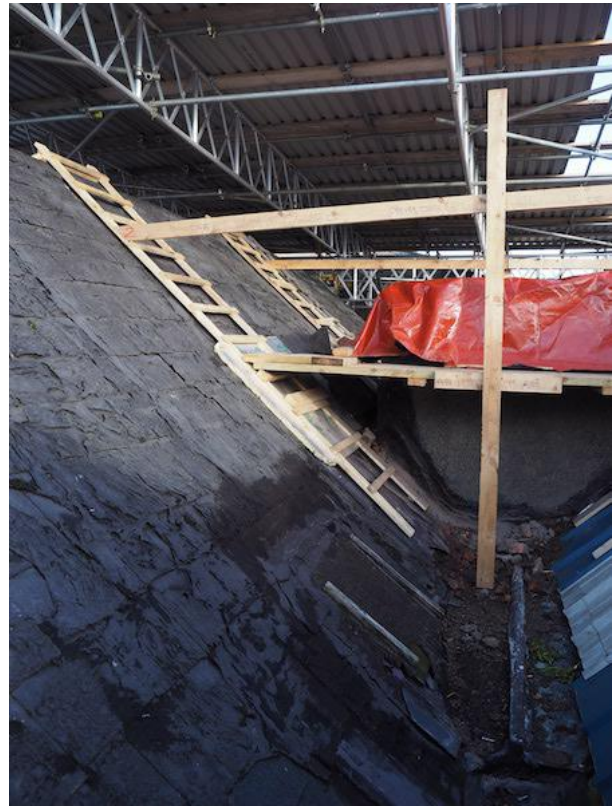
P9.1



P9.2



P9.3



P9.4



P9.5



P9.6

Views of rear roof faces



P10.1



P10.2



P10.3



P10.4



P10.5



P10.6



P11.1



P11.2



P11.3

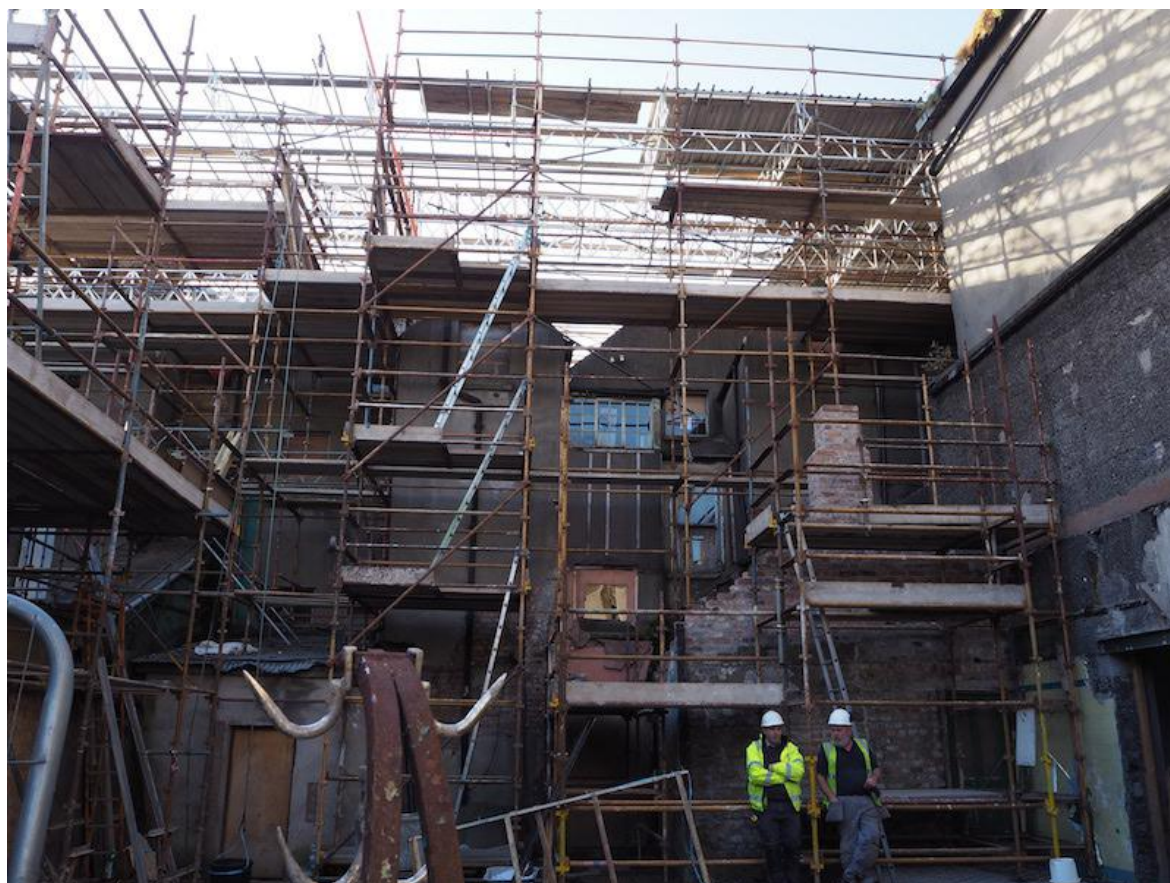


P11.4

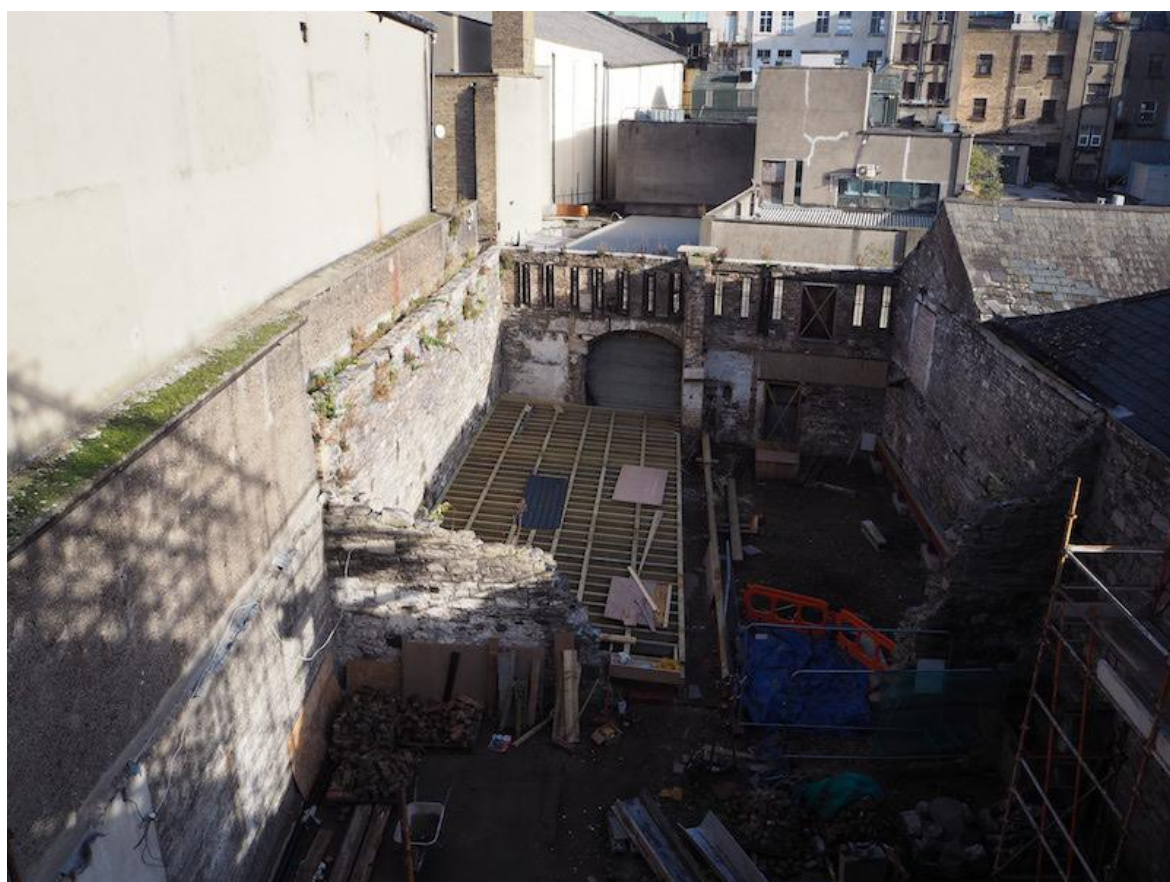


P11.5

Views of rear yard



P12.1



P12.2 The temporary roof which is designed to reduce water ingress to the subterranean cellars is being installed: the thin concrete shells which form the roof of the cellars will thus be protected from traffic, albeit inhibiting site access from Moore Lane in the short term



P13.1



P13.2

MOORE STREET SELECTED INTERNAL PHOTOGRAPHS



P15.1



P15.2



P15.3 One of the new openings to allow circulation between buildings



P15.4



P15.5 The masonry surround joist ends is precarious



P15.6



P16.1



P16.2 Protection in place on a staircase



P16.3



P16.4



P16.5 Timber decay at roof level



P16.6



P17.1



P17.2



P17.3



P17.4



P17.5 Stainless steel helibars inserted to tie the facades to flanking walls



P17.6



P18.1



P18.2



P18.3



P18.4



P19.1



P19.2



P19.3



P19.4



P19.5



P19.6



P20.1



P20.2



P20.3



P20.4



P20.5



P20.6



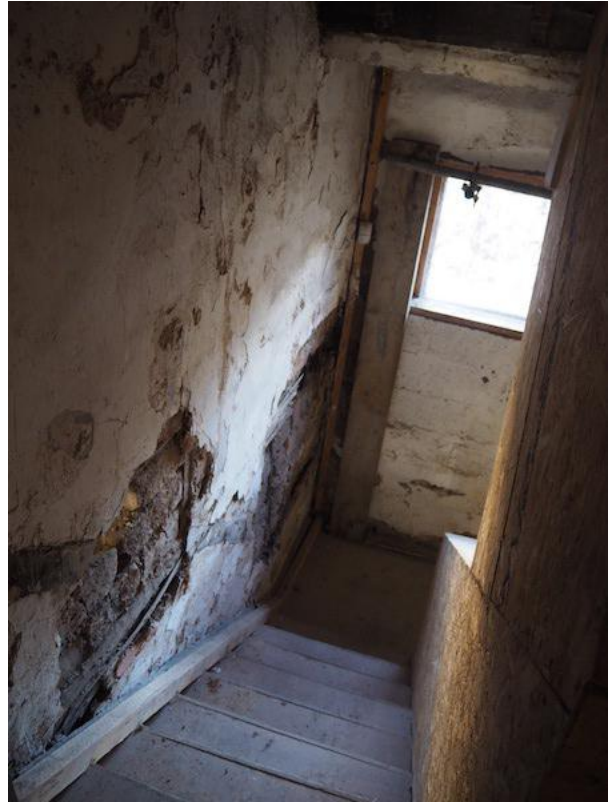
P21.1



P21.2



P22.1



P22.2



P22.3



P22.4



P22.5



P22.6



P23.1



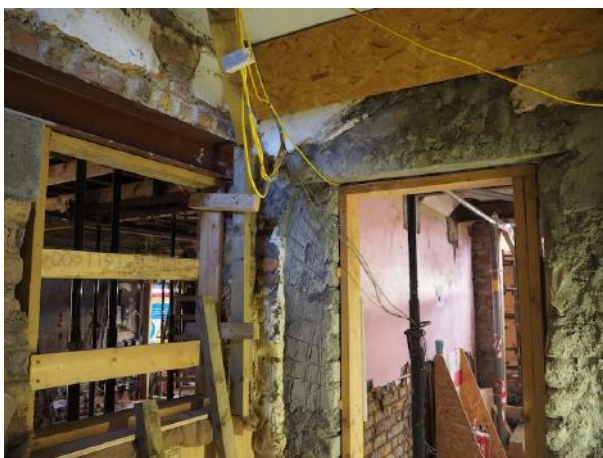
P23.2



P23.3



P23.4



P23.5



P23.6



P24.1



P24.2



P24.3



P24.4



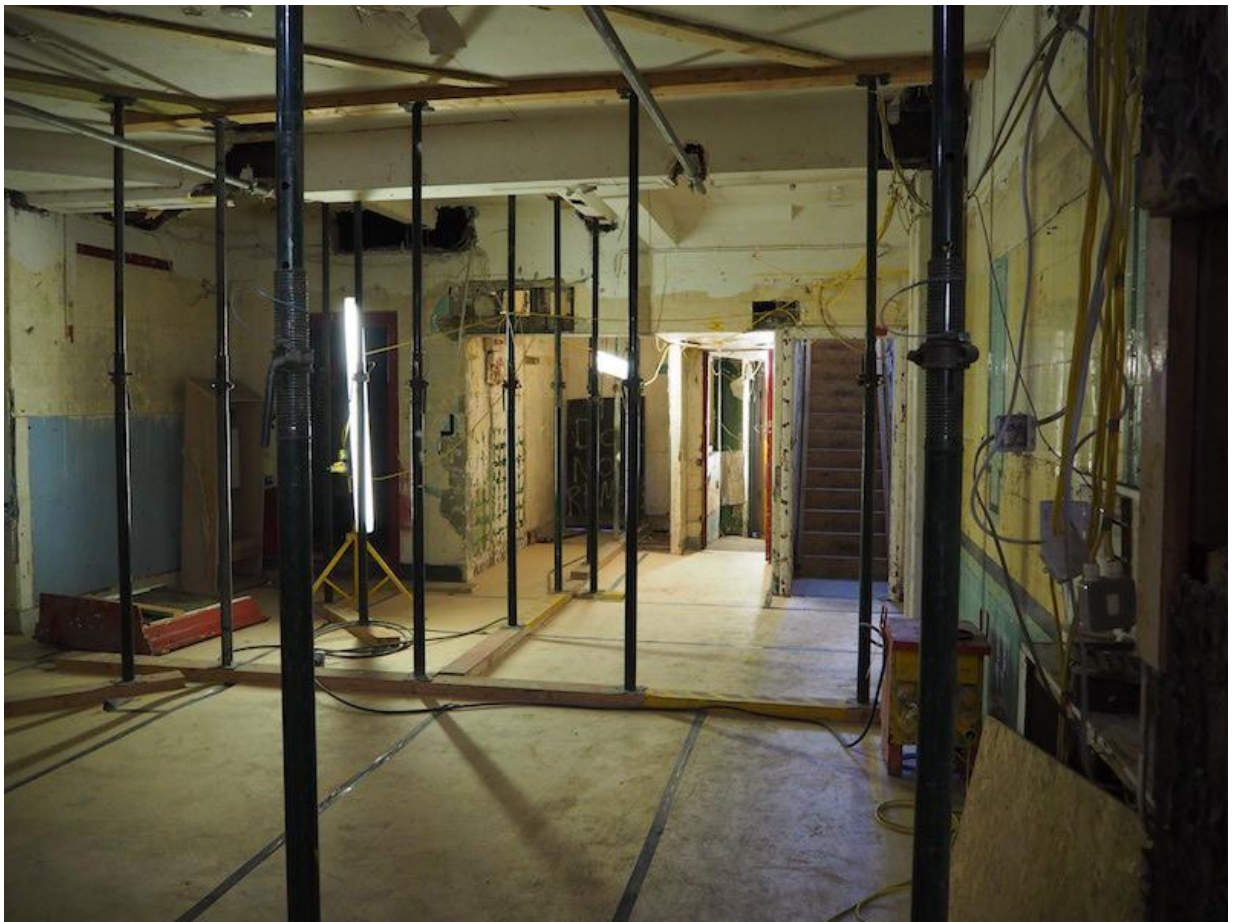
P24.5



P25.1



P25.2



P25.3



P26.1



P26.2



P27.2



P27.3



P27.4



P27.5



P28.1

P28.2



P28.3 Some of the propping and restraint systems are quite elaborate



P28.4



P29.1 The diagonal planks on the ceiling are an older attempt to retain the decayed plaster ceiling in position: it is probably beyond repair.



P29.2



P29.3



P30.1



P30.2



P30.3



P30.4



P30.5



P30.6



P31.1



P31.2



P32.1



P33.1



P33.2



P33.3



P34.1



P34.2



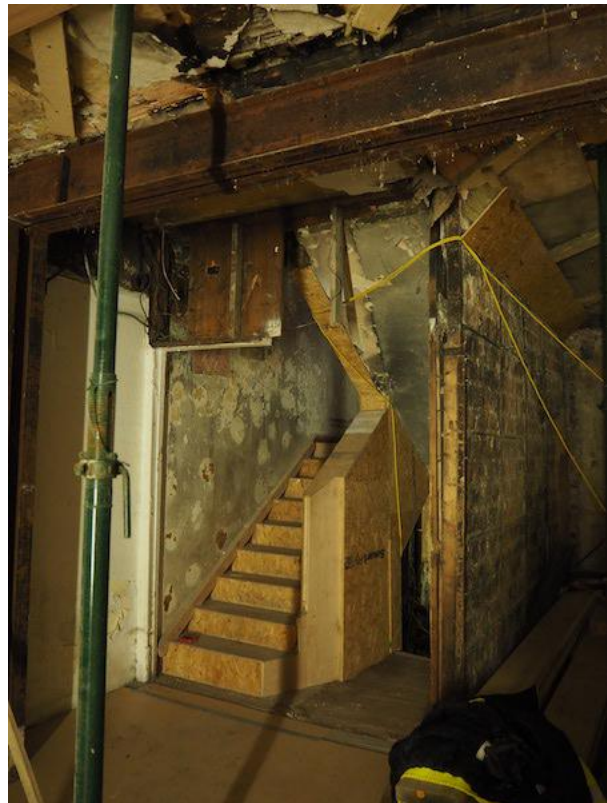
P34.3



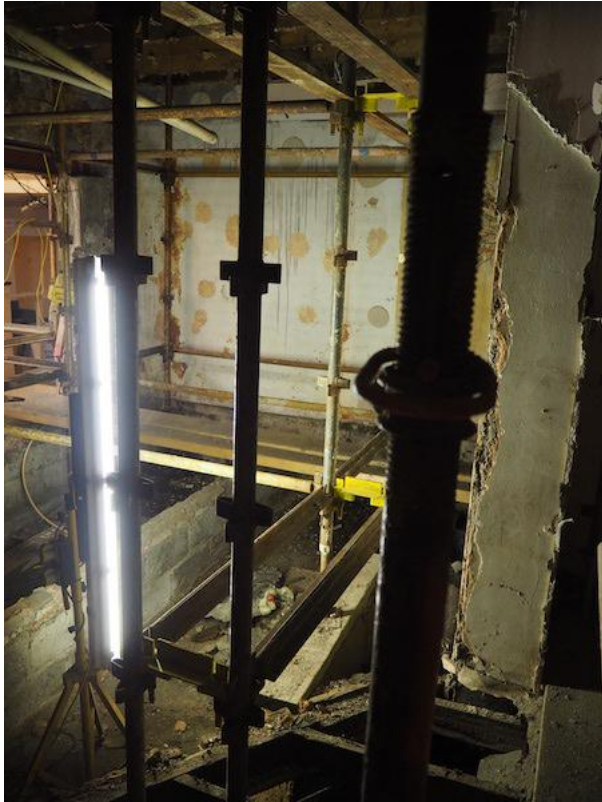
P35.1 The fragments of wallpaper in No 17 which are of historic interest.



P35.2



P35.3



P36.1



P36.2



P36.3



P36.4



P36.5



P36.6 Portion of a basement wall exposed to reveal the alluvial and esker stones of which it is made.



P37.1



P37.2



P37.3



P37.4



P38.1



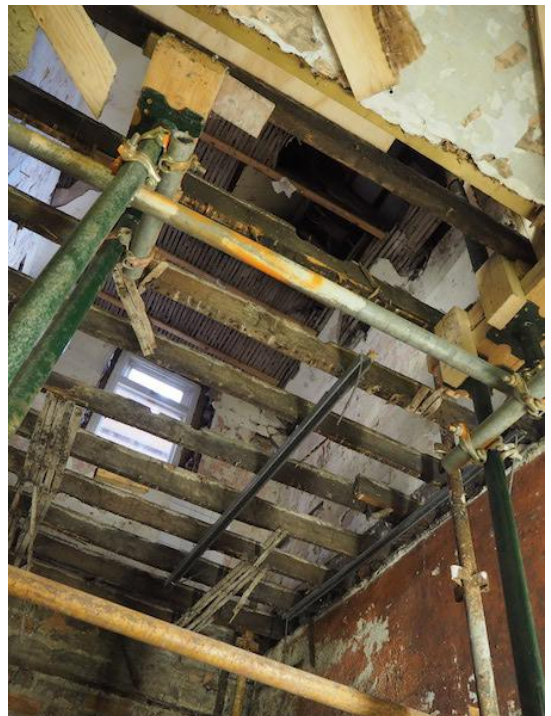
P38.2



P38.3



P38.4



P38.



P39.1



P39.2



P40.1



P40.2



P40.3



P41.1



P41.2



P41.3



P41.4



P41.5



P41.6

TEMPORARY JOINERY STORE



P42.1 Removed material is stored in racks, organised by building and by floor



P42.2



P42.3

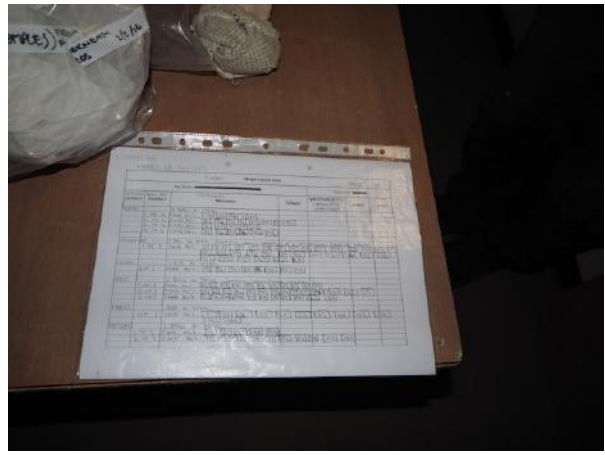


P43.1

TEMPORARY ARCHAEOLOGY FINDS STORE



P43.2 The archaeological material which has been discovered



P43.3 A schedule of the archaeological material which has been discovered



P43.4 The sub-terranean cellars at 8 and 9 Moore lane



P43.5



P44.1



P44.2



P45.1



P45.2



P45.3



P45.4



P45.5



P46.1



P46.2