

Inspection of works, 14-17 Moore St.

3rd February 2017

An inspection of the ongoing Essential Works being carried out at 14-17 Moore St. and as approved by the High Court, was undertaken on 3rd February 2017.

The following were in attendance:

- The chief archaeologist and senior archaeologist from the Department of Arts, Heritage, Regional, Rural and Gaeltacht Affairs.
- The project conservation architect and site conservation architect.
- The project manager
- Three members of Dublin City Council

The scaffolding in front of no. 19 has been set back to improve access by pedestrians on the pavement.

Work continues at roof level. Temporary pointing using lime mortar has been carried out in small areas of the brick parapet where the joints were open and were particularly vulnerable. The entire façade will need to be repaired / repointed during the final phase of works (this does not form part of the current programme). The steel lintel has been inserted in the rear gable of no. 17 and work has commenced on the rebuilding of the brick masonry. The steel lintel in no. 14 has also been put in place and a further section of steel will be required to allow retention of one of the timber lintels at the rear of no.16 – this has been ordered and its delivery is awaited. Work is continuing on the doubling-up of the rafters.

Work has commenced on the return of the floor boards, timber architraves etc. to the rooms from which they originated. They are labelled and have been placed on timber battens to allow air circulation.

The roof of the building at the rear of no. 14 is ready for slating and the gutter brackets are being fitted. The roofing contractors are expected to commence work on site on 8th February.

Work has commenced on the measuring for the roller shutters that will secure the shop fronts on completion of this phase of works. The temporary electricians are almost complete and the contractors are awaiting final connection by the ESB. The temporary comms cabinets are sited in no.15.

The photographic recording of the project is ongoing.

There has been no change to the current programme schedule.



Temporary lime mortar pointing on brick parapet (no. 14) (Photo: P. Walsh)



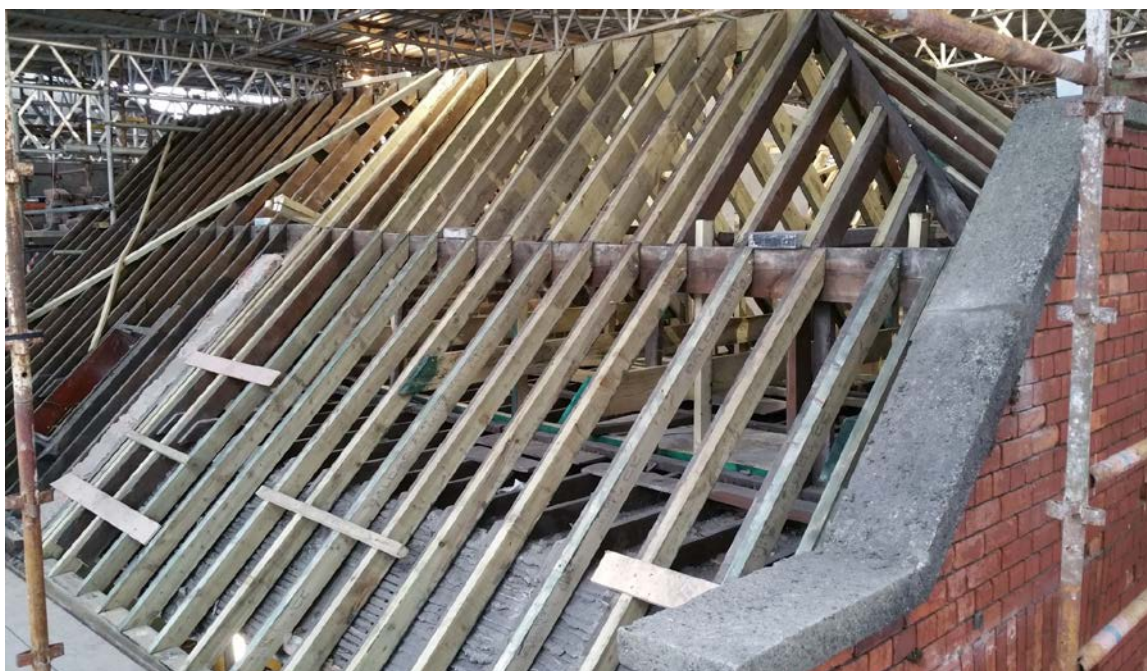
Roof at rear of no. 14, ready for slating (Photo: P. Walsh)



Steel inserted in rear gable of no. 17 (Photo: P. Walsh)



Timbers belonging to front room of no. 16, returned for storage (Photo: P. Walsh)



Doubling-up of rafters (Photo: P. Walsh)

Ann Lynch

Dr. Ann Lynch,

Acting Chief Archaeologist

National Monuments Service

3 February 2017