

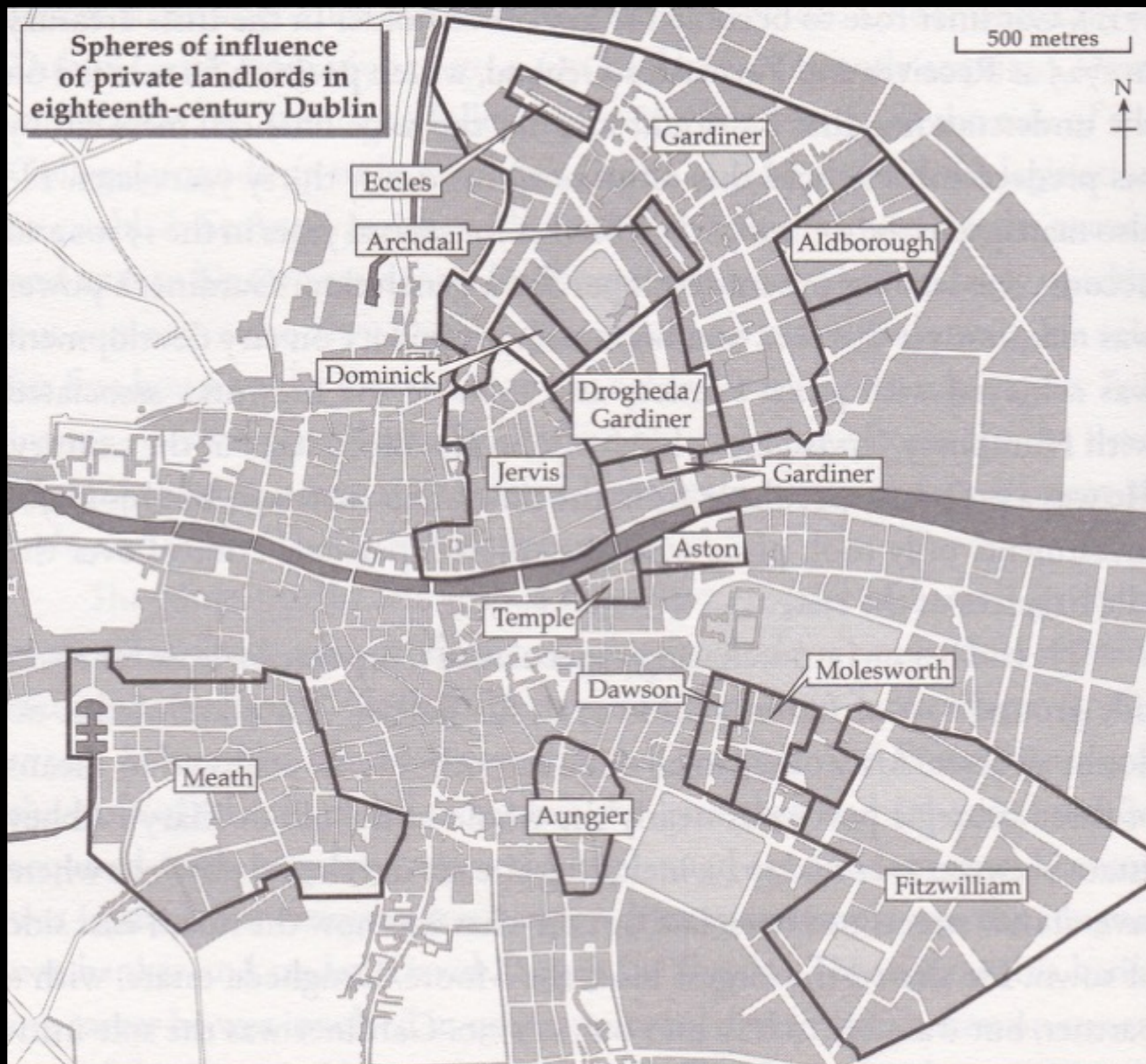
BESIDE THE GREAT MONUMENTAL AVENUE OF THE CITY

Brian Ward

Symposium on Moore Street 18.10.17



Rocque's Map of Dublin 1756



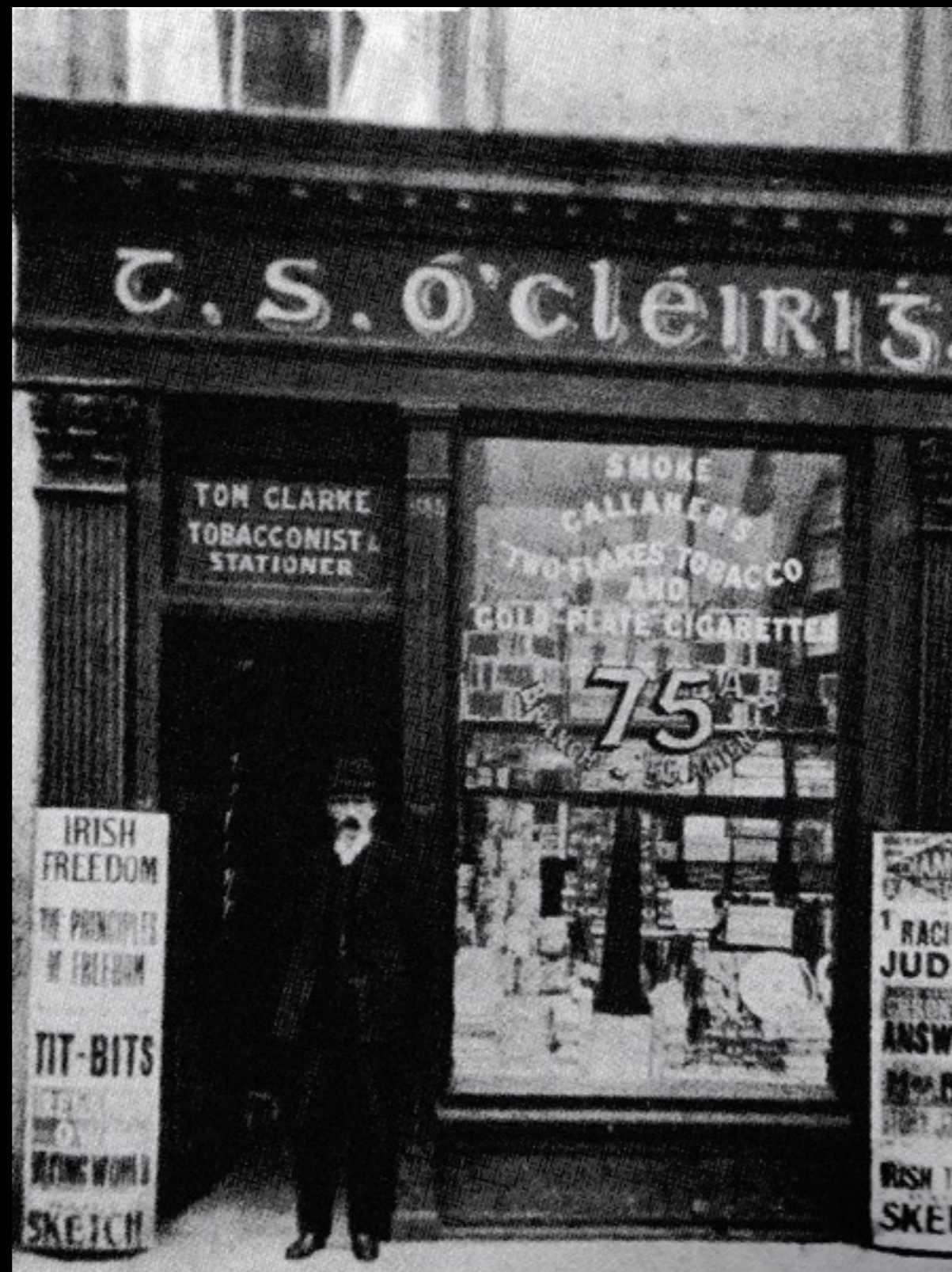
Spheres of Influence of private estates in eighteenth-century Dublin



Kaye Parry & Ross, Competition Entry, 1914, Honourable Mention



Kaye Parry & Ross, Competition Entry, 1914, Honourable Mention



Tom Clarke outside his Parnell Street shop



John Redmond addressing monster meeting on O'Connell Street in Dublin, 31 March 1912

The Daily Mirror

THE MORNING JOURNAL WITH THE SECOND LARGEST NET SALE.

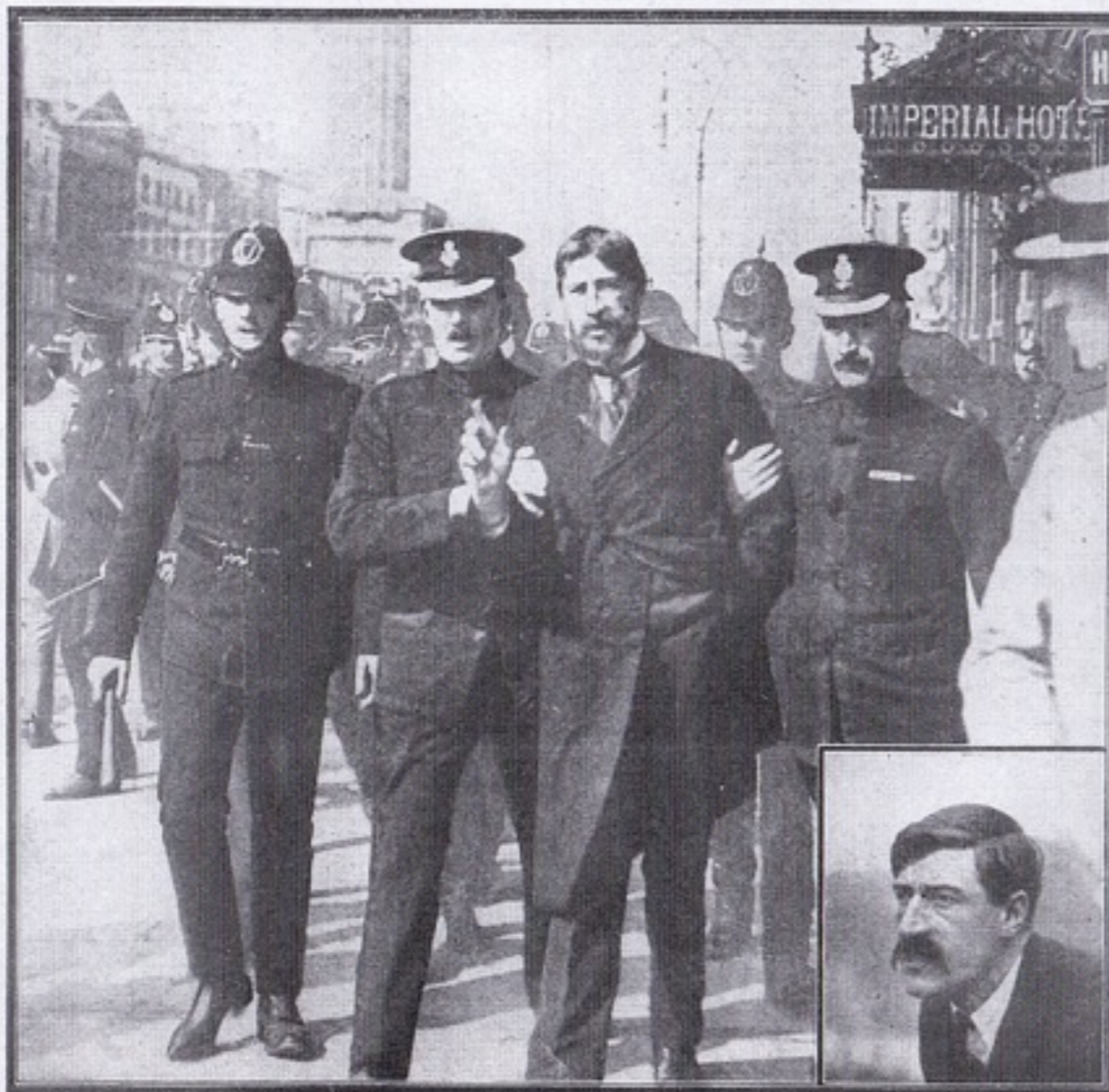
No. 3,076.

Registered at the G.P.O.
as a Newspaper.

TUESDAY, SEPTEMBER 2, 1913

One Halfpenny.

**MR. JAMES LARKIN, DISGUISED IN FALSE BEARD AND FROCK COAT, ARRESTED
BY POLICE IN CONNECTION WITH DUBLIN STRIKE RIOTS.**

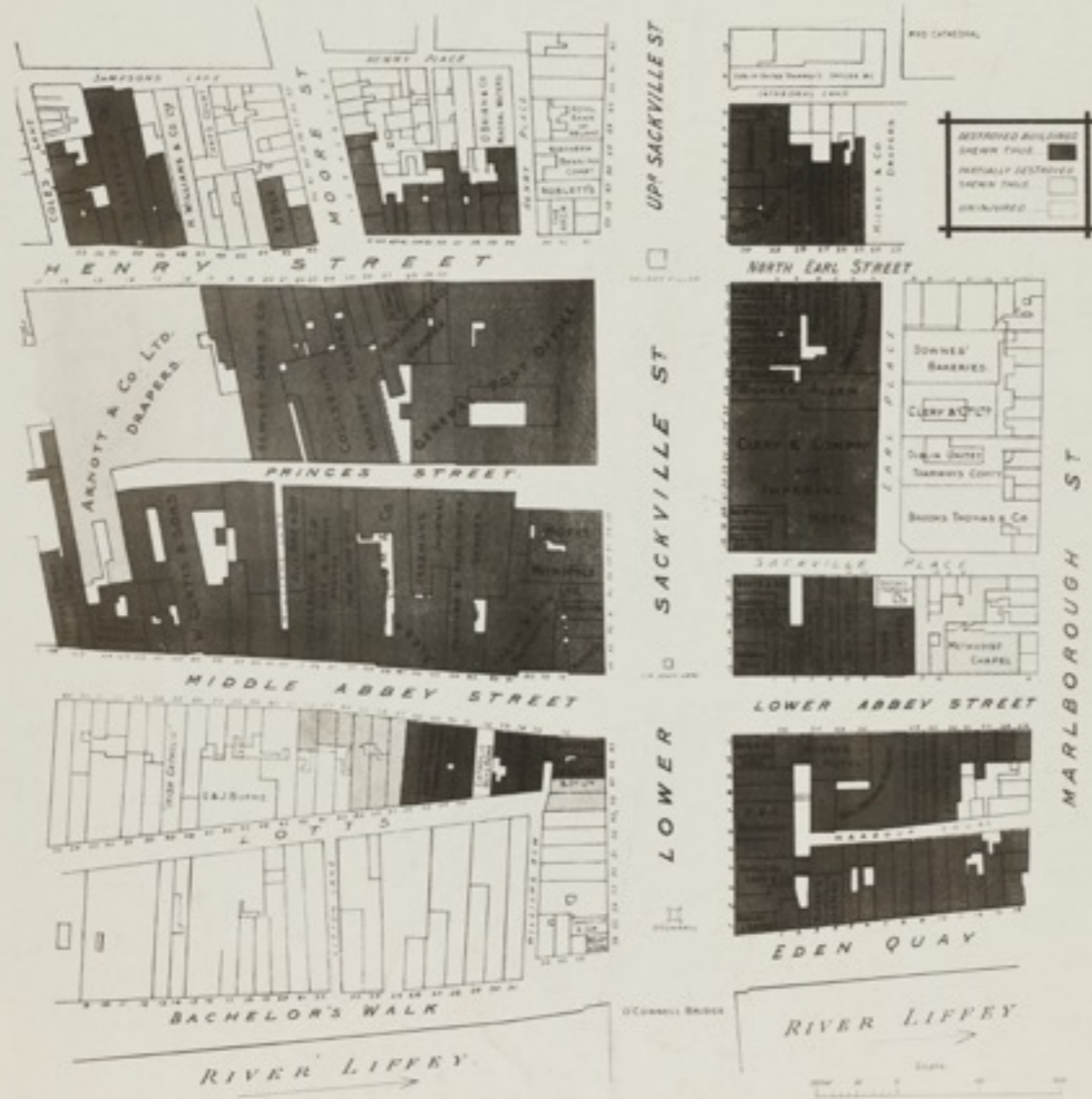


Prohibited by the authorities from holding a meeting on Sunday of the Irish Transport Workers' Union, of which he is secretary, Mr. James Larkin vowed to appear in Sackville-street, Dublin, despite the fact that the police held a warrant for his arrest. By adopting the disguise in which he is seen above he was able to carry out his threat. On Sunday morning an apparently old and feeble bearded man took

a room at the Imperial Hotel in Sackville-street. Shortly afterwards this venerable gentleman stepped on to the balcony and, announcing, "I am Larkin," began to address the crowds in the street below. Police instantly ransacked the hotel and arrested him. The picture shows him leaving the hotel in custody. The smaller picture is of Mr. Larkin without disguise.—(Daily Mirror photographs.)

**PLAN OF THE SACKVILLE STREET AREA
DESTROYED DURING THE DISTURBANCES,
APRIL, 1916.**

ISSUED BY THE HIBERNIAN FIRE & GENERAL INSURANCE CO., LTD.
HEAD OFFICE, 49 DAME STREET, DUBLIN.
BRANCH OFFICES,
BELFAST, LONDONDERRY, CORK & DUNDALK.





The Dublin Housing Inquiry, *Darkest Dublin Photographs*, 1913



Nos 66 and 67 Church Street, *Dublin Evening Mail*, Sept 3, 1913



'Bloody Sunday', Sackville Street, 31 August 1913

CIVIC EXHIBITION
MAP SHEWING *IRELAND*
TRAM-ROUTES *1914*



Map, The Civic Exhibition

ESTABLISHED 1765. DUBLIN, THURSDAY, JULY 24, 1914. PRICE ONE PENNY.

SUITS MADE TO ORDER BY
PRESCOTT'S
 HENRIETTA ST. DUBLIN.

LACE CURTAINS
DUVAL, et al.

CIVIC EXHIBITION

"Ireland in miniature"

LINENHALL BUILDINGS, DUBLIN

JULY 15th

AUGUST 31st

STATE OPENING CEREMONY TO-MORROW

To-morrow, at 2.30 p.m., the Exhibition will be opened by His Excellency the Lord Lieutenant. The Opening Ceremony will be preceded by a striking Civic Pageant, starting from the Mansion House at 1.15 p.m., in which representatives of nearly all the important Civic and Corporate Bodies in Ireland will participate. Their Excellencies and the representatives of the various Urban and Rural Councils will attend in state.

THE Opening of Dublin's Great Civic Exhibition is an event of the utmost importance. It is the first Exhibition of its kind to be held in these islands. Gathered together within its vast acres of magnificent buildings and grounds is a wonderful variety of exhibits, structures and amusements, depicting almost every phase of Irish life. For the thoughtful student of life he learned here in much to see, think to learn, and a vast amount to receive. For the joy-loving sportsman, who will loiter the Exhibition grounds during his spare moments, there are endless attractions—outdoor and indoor. There are a few of the many things that will interest YOU.

URBAN AND RURAL LIFE.

In this section, exhibiting from Trinity College, Dublin, is a complete and up-to-date record of the life of the people of the various towns and villages in the Kingdom. It is a complete history of the life of the people of the Kingdom.

GOVERNMENT DEPARTMENTS.

In this section, exhibiting from the various Government Departments, is a complete and up-to-date record of the work of the various Government Departments. It is a complete history of the work of the various Government Departments.

FOOD AND HEALTH.

In this section, exhibiting from the various Government Departments, is a complete and up-to-date record of the work of the various Government Departments. It is a complete history of the work of the various Government Departments.

IN A NUTSHELL.

In this section, exhibiting from the various Government Departments, is a complete and up-to-date record of the work of the various Government Departments. It is a complete history of the work of the various Government Departments.

COMPETITIONS.

In this section, exhibiting from the various Government Departments, is a complete and up-to-date record of the work of the various Government Departments. It is a complete history of the work of the various Government Departments.

HOW TO GET THERE.

In this section, exhibiting from the various Government Departments, is a complete and up-to-date record of the work of the various Government Departments. It is a complete history of the work of the various Government Departments.

INDUSTRIES AND COMMERCE.

In this section, exhibiting from the various Government Departments, is a complete and up-to-date record of the work of the various Government Departments. It is a complete history of the work of the various Government Departments.

MUNICIPAL EXHIBITS.

In this section, exhibiting from the various Government Departments, is a complete and up-to-date record of the work of the various Government Departments. It is a complete history of the work of the various Government Departments.

AMUSEMENTS.

In this section, exhibiting from the various Government Departments, is a complete and up-to-date record of the work of the various Government Departments. It is a complete history of the work of the various Government Departments.

ADMISSION:

OPENING CEREMONY.—At 2.30 p.m. (including admission to Garden Grounds), 1/6. Children, 1/3. GENERAL.—Admission, 1/6. Evening, 4d. (Opening the 111. Children Half-price). Seats 3d. (Children 1d.). 4d. (Children 1d.). Wednesday and Saturday 1d. (Children 1d.). Exhibition open daily 10 a.m. to 5 p.m.

CIVIC EXHIBITION

"Ireland in miniature"

LINENHALL BUILDINGS, DUBLIN

JULY 15th

AUGUST 31st

STATE OPENING CEREMONY TO-MORROW

To-morrow, at 2.30 p.m., the Exhibition will be opened by His Excellency the Lord Lieutenant. The Opening Ceremony will be preceded by a striking Civic Pageant, starting from the Mansion House at 1.15 p.m., in which representatives of nearly all the important Civic and Corporate Bodies in Ireland will participate. Their Excellencies and the representatives of the various Urban and Rural Councils will attend in state.

THE Opening of Dublin's Great Civic Exhibition is an event of the utmost importance. It is the first Exhibition of its kind to be held in these islands. Gathered together within its vast acres of magnificent buildings and grounds is a wonderful variety of exhibits, structures and amusements, depicting almost every phase of Irish life. For the thoughtful student of life he learned here in much to see, think to learn, and a vast amount to receive. For the joy-loving sportsman, who will loiter the Exhibition grounds during his spare moments, there are endless attractions—outdoor and indoor. There are a few of the many things that will interest YOU.

URBAN AND RURAL LIFE.

In this section, exhibiting from Trinity College, Dublin, is a complete and up-to-date record of the life of the people of the various towns and villages in the Kingdom. It is a complete history of the life of the people of the Kingdom.

GOVERNMENT DEPARTMENTS.

In this section, exhibiting from the various Government Departments, is a complete and up-to-date record of the work of the various Government Departments. It is a complete history of the work of the various Government Departments.

FOOD AND HEALTH.

In this section, exhibiting from the various Government Departments, is a complete and up-to-date record of the work of the various Government Departments. It is a complete history of the work of the various Government Departments.

IN A NUTSHELL.

In this section, exhibiting from the various Government Departments, is a complete and up-to-date record of the work of the various Government Departments. It is a complete history of the work of the various Government Departments.

COMPETITIONS.

In this section, exhibiting from the various Government Departments, is a complete and up-to-date record of the work of the various Government Departments. It is a complete history of the work of the various Government Departments.

HOW TO GET THERE.

In this section, exhibiting from the various Government Departments, is a complete and up-to-date record of the work of the various Government Departments. It is a complete history of the work of the various Government Departments.

INDUSTRIES AND COMMERCE.

In this section, exhibiting from the various Government Departments, is a complete and up-to-date record of the work of the various Government Departments. It is a complete history of the work of the various Government Departments.

MUNICIPAL EXHIBITS.

In this section, exhibiting from the various Government Departments, is a complete and up-to-date record of the work of the various Government Departments. It is a complete history of the work of the various Government Departments.

AMUSEMENTS.

In this section, exhibiting from the various Government Departments, is a complete and up-to-date record of the work of the various Government Departments. It is a complete history of the work of the various Government Departments.

ADMISSION:

OPENING CEREMONY.—At 2.30 p.m. (including admission to Garden Grounds), 1/6. Children, 1/3. GENERAL.—Admission, 1/6. Evening, 4d. (Opening the 111. Children Half-price). Seats 3d. (Children 1d.). 4d. (Children 1d.). Wednesday and Saturday 1d. (Children 1d.). Exhibition open daily 10 a.m. to 5 p.m.



Industrial and Commercial Section.



The
Civic
Exhibition

JULY 15th
TO
AUGUST 31st



Dublin Bread Company, 6-7 Lower Sackville Street, May 1916

No. 1 PERIODS OF EXECUTION
IN THREE DECADES URGENT

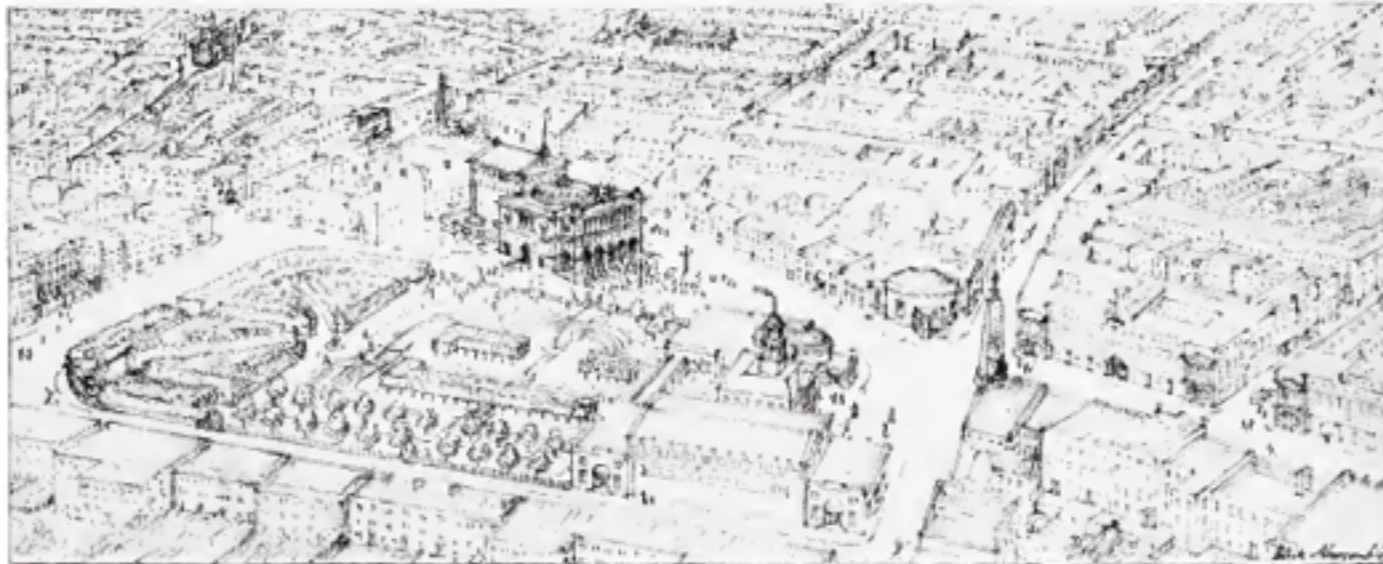
CITY OF DUBLIN NEW TOWN PLAN

For Street - design indicated on plan
Open Space - the unshaded areas and squares
Rail Road - the railway line and stations
It will not be necessary to refer to the plan
www.dublin.gov.ie Dublin 1914

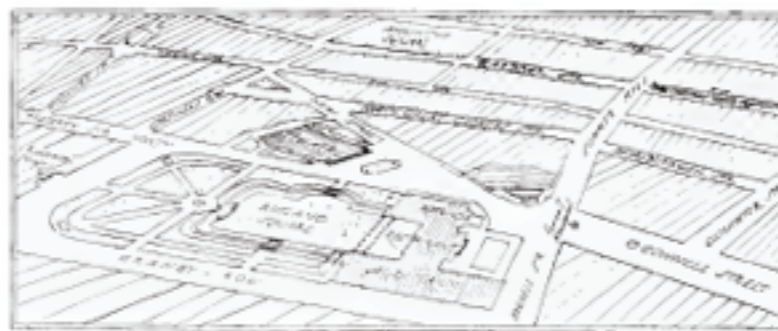


Scale of Feet
All measurements are given in feet
unless otherwise stated

Patrick Abercrombie, Competition Entry, 1914, Premiated

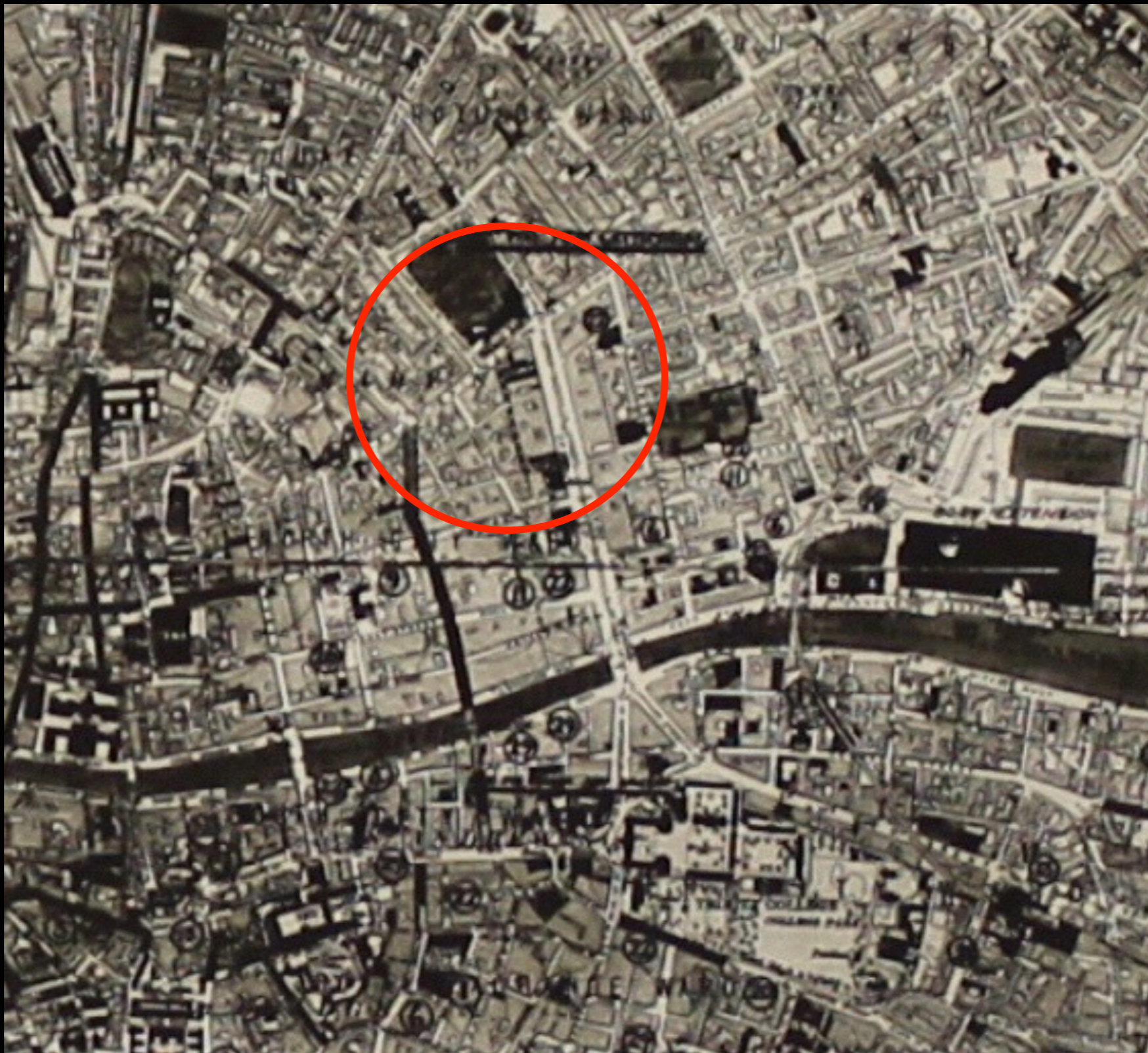


The National Theatre at the top of O'Connell Street. In the foreground is the new Amphitheatre and restored Rounda; the centre block is to be a restaurant facing on to the Rounda Gardens or Roland Square.



Key Plan of the above.

PLATE XXXIII.



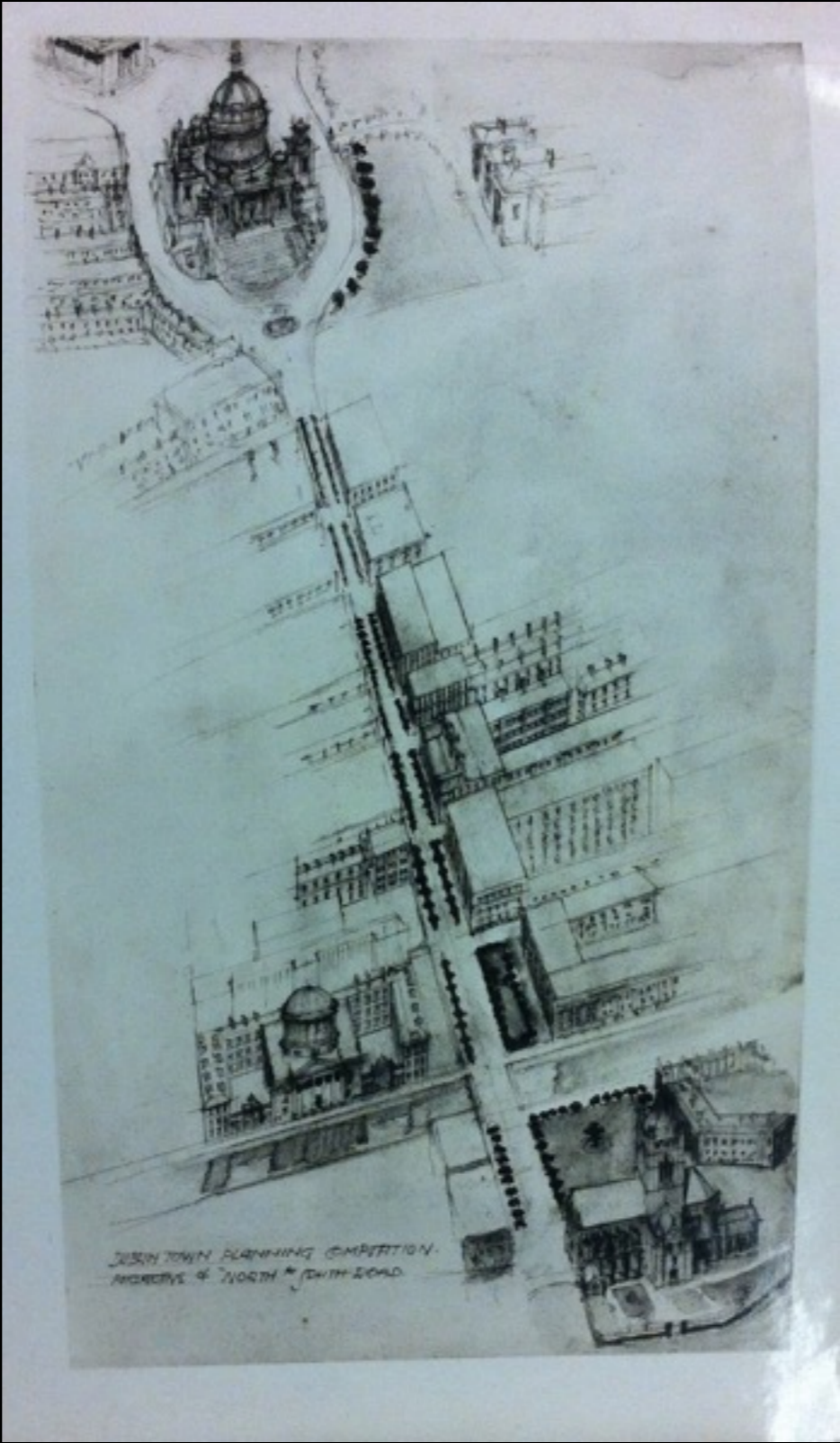
Kaye Parry & Ross, Competition Entry, 1914, Honourable Mention



Gary Boyd, Eighteenth century interventions of the Wide Street Commissioners



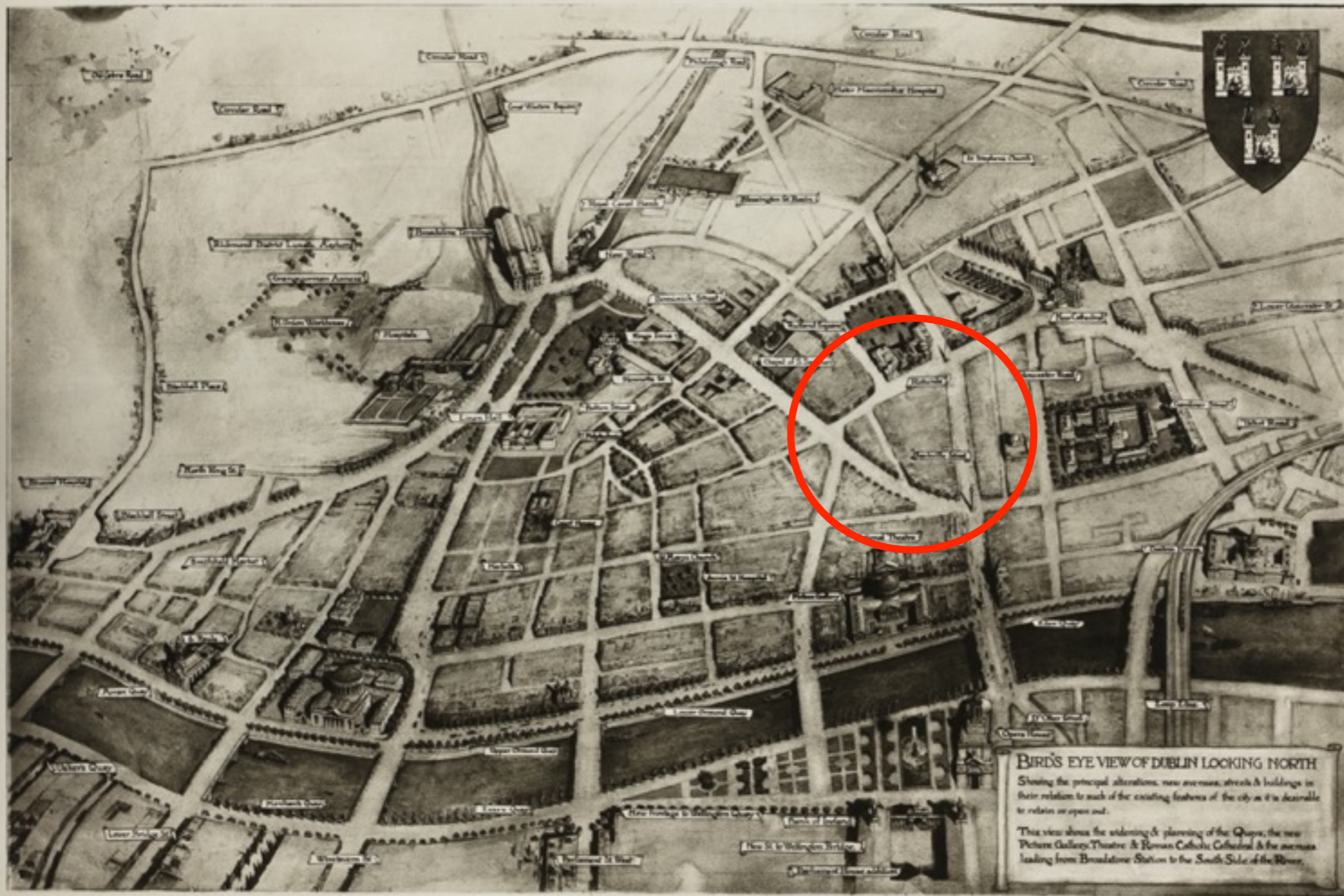
FAC Smith, Competition Entry, 1914, Honourable Mention



Donnelly Moore, Competition Entry, 1914



JM Bogle, Competition Entry, 1914, Honourable Mention



BIRD'S EYE VIEW OF DUBLIN LOOKING NORTH
Showing the principal alterations, new avenues, streets & buildings in their relation to such of the existing features of the city as it is desirable to retain or open out.
This view shows the widening & planning of the Quays, the new Picture Gallery, Theatre & Roman Catholic Cathedral & the avenue leading from Broadstone Station to the South Side of the River.



Kaye Parry & Ross, Competition Entry, 1914, Honourable Mention