

NATIONAL WASTE PREVENTION PROGRAMME

Preventing Waste
Driving the
Circular Economy



Food Waste Prevention

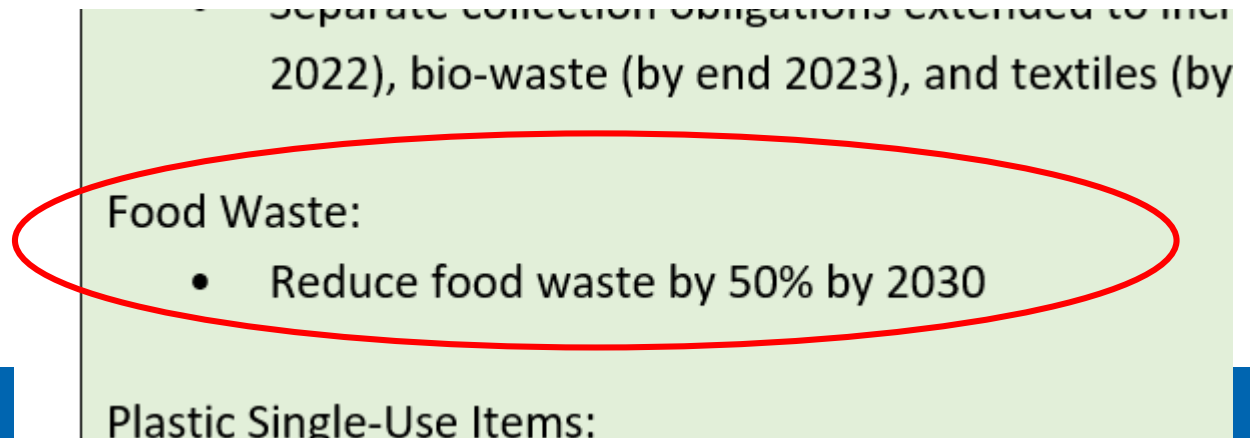
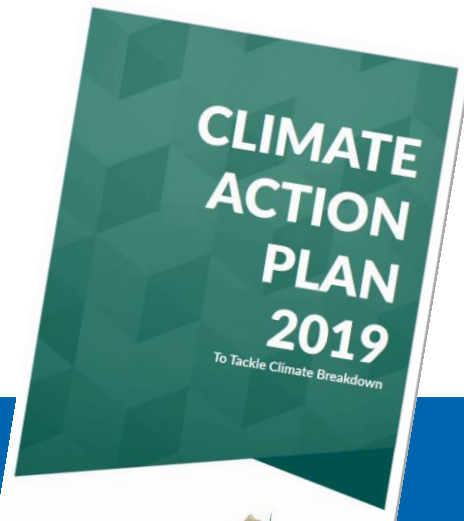
Waste Advisory Group Meeting

22 April 2020

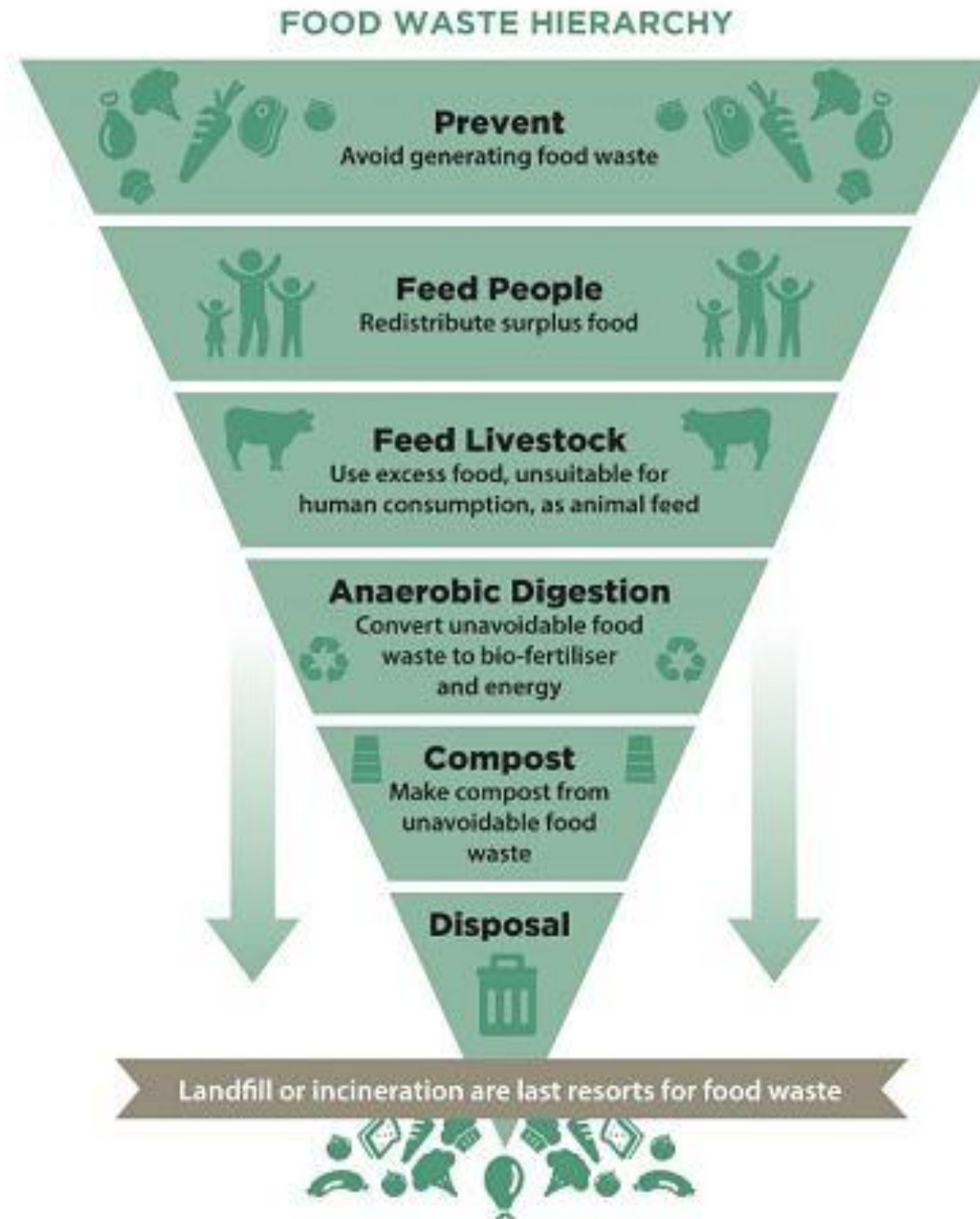
Policy

- ▶ UN SDG 12.3: “By 2030, **halve per capita global food waste at the retail and consumer levels...**
- ▶ ...and **reduce food losses along production and supply chains, including post-harvest losses**”
- ▶ EU: “Circular Economy aims to *help achieve* SDG Target 12.3”

- ▶ Ireland:



Food Waste Hierarchy...



Measurement

- ▶ Led by EPA – with CSO, DCCAIE & others
- ▶ Common EU methodology to measure food waste
- ▶ First reporting year is 2020. (due by mid-2022)

Data on food waste amounts (in metric tonnes of fresh mass)			
Stage of the food supply chain	Food waste referred to in Article 1 of Delegated Decision (EU) 2019/1597		Food waste drained as or with wastewaters (referred to in Article 3(b) of Delegated Decision (EU) 2019/1597)
	Total food waste	Fraction of total food waste, composed of parts of food intended to be ingested by humans (referred to in Article 3(a) of Delegated Decision (EU) 2019/1597)	
Primary production			
Processing & manufacturing			
Retail and other distribution of food			
Restaurants & food services			
Households			
Sum			

White boxes: provision of data is mandatory; Shaded boxes: provision of data is voluntary.



Measurement

One Million Tonnes of food waste...

(various sources: 2016-218)

Primary production	?	Research underway to address data gap <i>(collate available data, identify other sources)</i>
Manufacturing & processing	500-700 kt	Data requires reworking & correction <i>(underway)</i>
Commercial	310 kt	Good figures - based on waste data <i>(room for improvement)</i>
Households	260 kt	Good figures - based on waste data <i>(room for improvement)</i>

Measurement - Carbon Footprinting

- ▶ *Global food loss & waste contributed 8-10% of total anthropogenic GHG emissions (IPCC, 2019)*
- ▶ Inform messaging on climate impact of food waste
- ▶ Inform messaging on foods to avoid wasting - foods with significant climate impact, e.g. coffee, meat, dairy, processed food
- ▶ Impact of waste treatment options, e.g. importance of segregation

Prevention

- ▶ **Food waste is a priority waste stream for the National Waste Prevention Programme.**
- ▶ **EPA oversees food waste prevention action for Ireland**
- ▶ **Working with Householders and Business to drive behaviour change**
- ▶ **Engaging with national actors: Sectoral bodies; Local & Regional Authorities; Retailers; DAFM; CRÉ...**

Prevention

▶ Stop Food Waste

- ▶ National consumer food waste programme
- ▶ Information & Empowerment
- ▶ *Unaware >> Engaged >> Committed*
- ▶ <http://stopfoodwaste.ie>

▶ Ireland's Food Waste Charter

- ▶ Business support programme
- ▶ Approach based on collective commitment
- ▶ *Pledge >> Measure >> Reduce >> Report*
- ▶ <http://foodwastecharter.ie>



Prevention - households

- ▶ <http://stopfoodwaste.ie>
- ▶ 153kg food waste @ €700 /year
- ▶ Information, Guidance, Training
- ▶ 23,000 social media followers
- ▶ 12,000 monthly website visitors



Donation

- Identify & redistribute surplus food in producers, manufacturers and suppliers
- Establish solutions for efficient donation organisations & logistics
- Food donation guidelines for donors & receivers (food safety, traceability, VAT etc)
- Responsibility vs Legal Liability



FoodCloud supports
over **9,500**
community groups in
Ireland and the UK

We've helped ensure the equivalent of

75 Million
Meals

have gone to people
and not to waste

We move **43**
Meals
every
minute
24/7



That's over
31,499
tonnes of food redistributed.



With an estimated value of
€94.5 million!

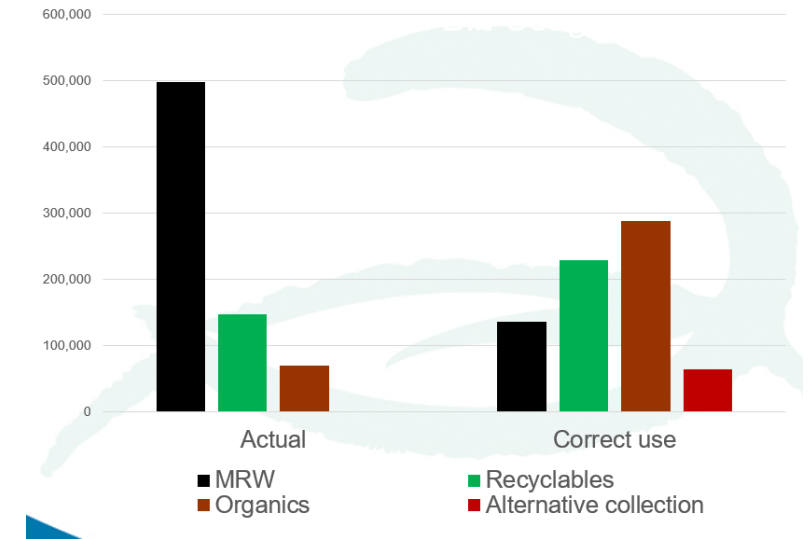
Approximately
100,798
tonnes of

CO₂eq
avoided



Management

- ▶ Proper segregation and reduced contamination of recycling stream is critical.
- ▶ CRE: despite legislation for the last ten years requiring businesses to have and use a food waste bin, 33% do not have one.
- ▶ Require the mandatory provision of an organic waste bin for all households.
- ▶ Waste companies should give clear feedback to customers on brown bin weights (w/ benchmarks).



Next Steps → Targets

- ▶ Clearly articulated national food waste prevention target (2030)
 - ▶ Define Scope & Baseline-year
 - ▶ Set interim (2025) targets and annual goals
 - ▶ Set sectoral targets
- ▶ Public sector leading by example
 - ▶ Implement targets for government departments and their agencies, reporting to green government process.
 - ▶ Set goals for healthcare facilities, schools & 3rd level institutions.

Next Steps → National Roadmap

- ▶ Based on Food Waste Hierarchy
- ▶ Driven by national targets and timeframes
- ▶ Mandatory reporting, with support for measurement
- ▶ Coordinate awareness raising, utilise behavioural science
- ▶ Facilitate improvement with roll-out of options & infrastructure
- ▶ Underpin with R&D for evidence & solutions

Next Steps → Priority Areas

- ▶ Single national consumer engagement programme to raise awareness & empower behavioural change via common messaging (StopFoodWaste).
- ▶ Food Waste Charter to deliver national business food waste targets including production, retail and services sector (similar to UK Courtauld Commitment).
- ▶ Improve data on food loss & waste for EU common data gathering methodology.
- ▶ Improve segregation & management of organic waste.