

WHY SHOULD WE HAVE A DRS?

- EU Requirements
- Litter Prevention
- Quality of Material
- Job Creation
- Create new reuse Infrastructure



VOICE
urging greener choices now!

EU REQUIREMENTS

- ▶ **Single Use Plastic Directive:**
 - ▶ 90% separate collection rate for plastic bottles by 2030
 - ▶ 30% recycled content requirement for bottles by 2030
- ▶ **Plastic Strategy (part of Circular Economy Package):**
 - ▶ 55% plastic packaging must be recycled by 2030
 - ▶ All plastic packaging must be easily recyclable by 2030

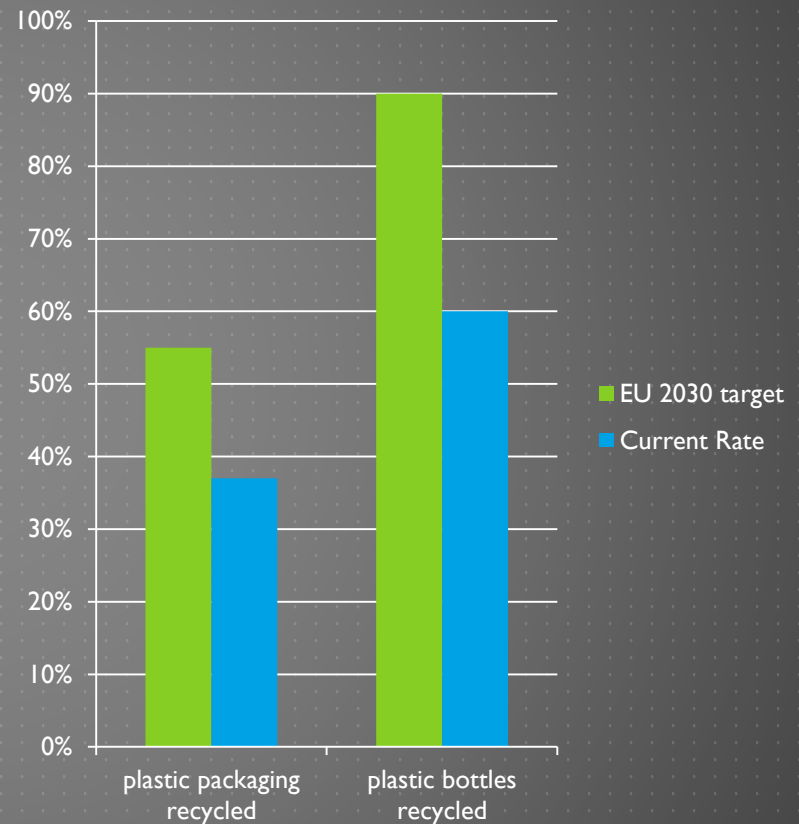


VOICE
urging greener choices now!

IRELAND'S PROGRESS

- ▶ Recycling 37% plastic packaging
- ▶ Recycling 60% plastic bottles

We have a long way to go...



VOICE
urging greener choices now!

LITTER PROBLEM

- ▶ The only litter characterisation data currently available in Ireland was carried out by County Limerick on Good Friday in 2017. On one day, over 16,000 volunteers working 33,558 hours picked up **68 tonnes of litter**.
 - ▶ 46,526 glass bottles (13%),
 - ▶ 123,636 coffee cups,
 - ▶ 549,495 PET bottles (8%) and
 - ▶ 149,463 aluminium cans (7%).
- ▶ EPA 2014 data: ~70,000 tonnes litter/sweepings/bin contents/annum
- ▶ RPS undergoing waste characterisation of public waste
- ▶ Cost of industry through EPR/REPAK = €89/tonne
- ▶ Cost to taxpayer for public waste management = €1,600/tonne approx
- ▶ Externalised saved costs from volunteer clean-ups worth ~€20M (1.6M hours at minimum wage)

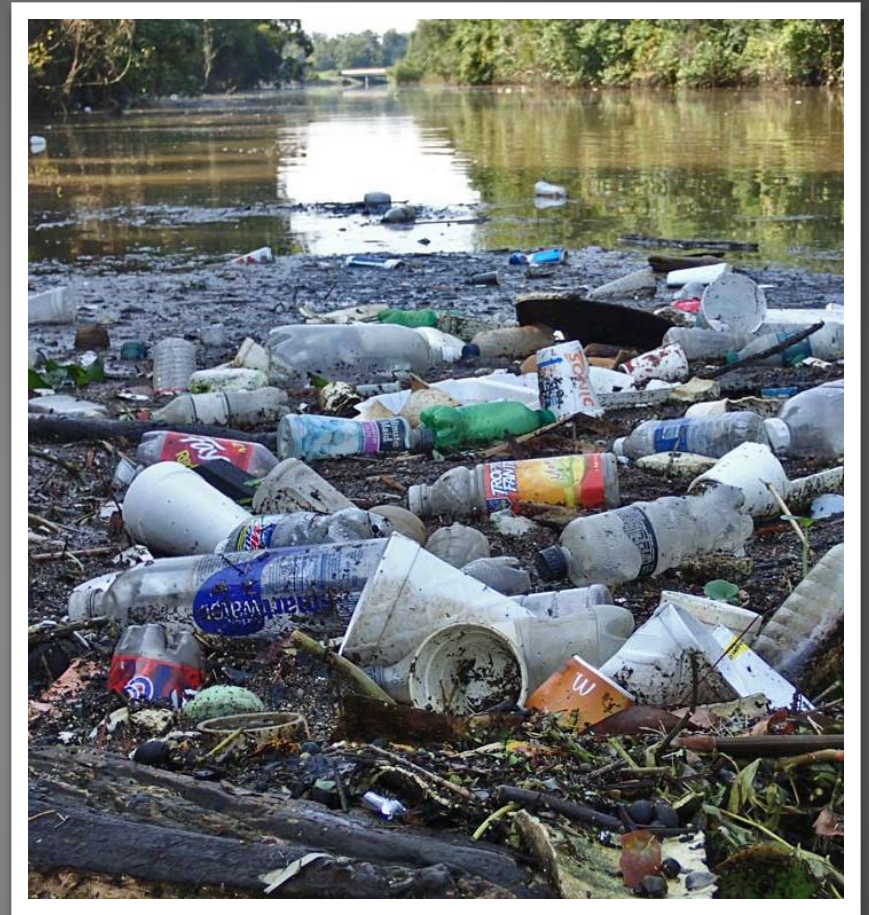
voice
urging greener choices now!

Impact on the environment

According to Sky Ocean Rescue, 4.8-12.7 million tonnes of plastic enter the oceans each year.

Plastic bottles are the 3rd largest component of this marine litter

Cost/benefit analysis of DRS system fails to consider the cost to the environment – now all costs are externalised.

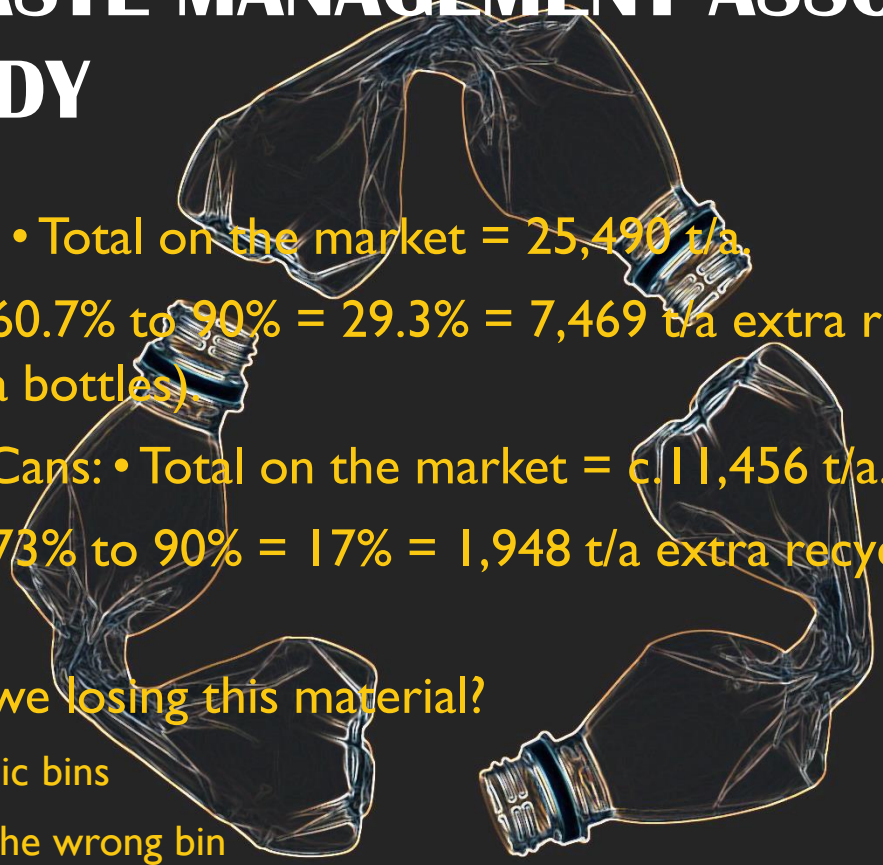


VOICE
urging greener choices now!

IRISH WASTE MANAGEMENT ASSOCIATION

DRS STUDY

- ▶ PET Bottles: • Total on the market = 25,490 t/a.
- ▶ Uplift from 60.7% to 90% = 29.3% = 7,469 t/a extra recycled (373.5 million extra bottles).
- ▶ Aluminium Cans: • Total on the market = c.11,456 t/a.
- ▶ Uplift from 73% to 90% = 17% = 1,948 t/a extra recycled (130 million extra cans).
- ▶ Where are we losing this material?
 - ▶ Litter/public bins
 - ▶ Placed in the wrong bin



QUALITY OF RECYCLED FEEDSTOCK

- ▶ Quality of PET collected separately much higher when collected in a single-stream
 - ▶ Wellman International only takes rPET from countries that have a DRS because it's good quality
- ▶ CocaCola UK VP Leendert den states that meeting their 50% rPET target:
“requires more packaging to be collected so that more can be reused to make new bottles.”
- ▶ Coke supports a DRS in the UK

“That’s why we support the planned reforms of the current recycling system in Great Britain and are calling for the introduction of a well-designed deposit return scheme for drinks containers, which we believe will reduce litter and increase the quantity and quality of material reprocessed in this country.”*

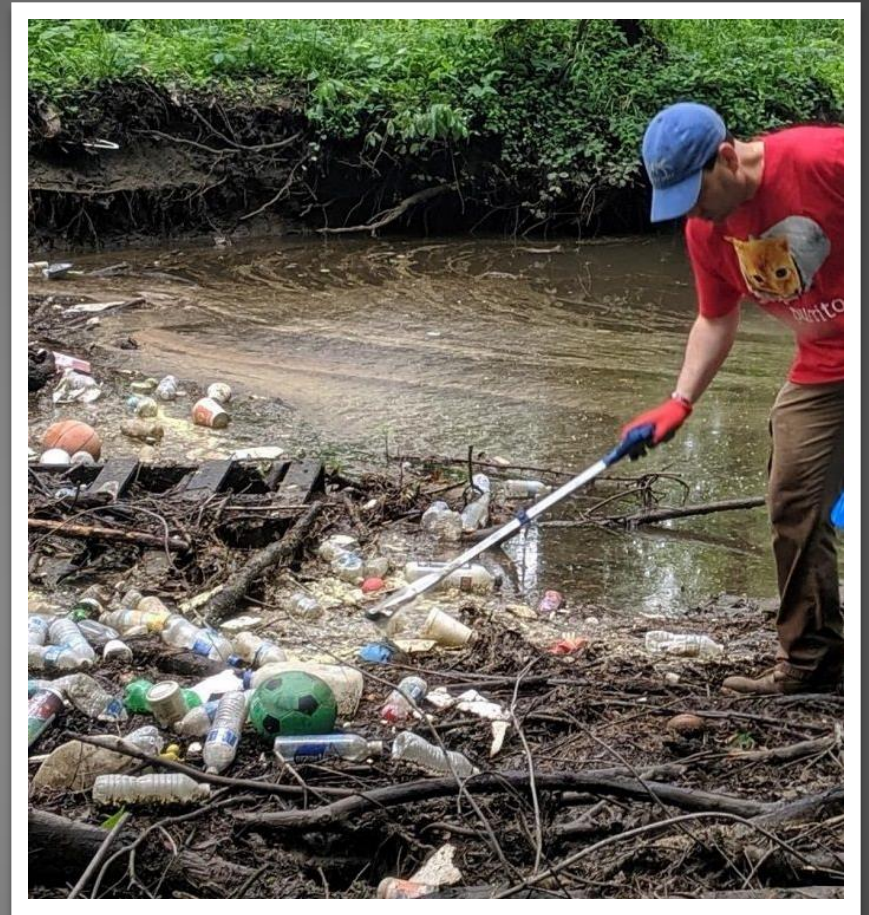
- ▶ Availability of rPET will be crucial in meeting 30% recycled content by 2023 and competition for recycled polymers will become more intense.

<https://www.packworld.com/issues/sustainability/article/21122559/the-packaging-conference-solutions-for-a-circular-plastics-economy>

VOICE
urging greener choices now!

Support for DRS

- >65 Tidy Towns groups
- >17,000 Uplift petition signatories
- Recyclers: Wellman International, recycles 2.66 billion PET bottles/year, saves 892,967 barrels of oil and 198 M kg/CO₂ released
- In 2013, Coastwatch Ireland polled 1,426 adults and children over 10 found that **89% were positive** towards a DRS



VOICE
urging greener choices now!

WHAT TO INCLUDE IN A DRS?

- ▶ All materials, including glass, plastic, aluminium, tetra, etc
- ▶ Look to develop a reuse system.
 - ▶ Ireland needs to consider refill options for drinks containers in a DRS system
 - ▶ Germany, Oregon
 - ▶ Reduces CO2 emissions
 - ▶ Reduces material consumption
 - ▶ Standardised glass bottles used up to 50 times
 - ▶ PET bottles used up to 7 times
 - ▶ Look at other options for a DRS
 - ▶ Coffee Cups
 - ▶ To-go containers

ADDITIONAL BENEFITS OF A DRS

- ▶ Shortens supply chain
- ▶ Provides local jobs
- ▶ Best way to reach 90% separate collection rate
 - ▶ Gov study not released, so don't know findings
 - ▶ Austria's study signalled DRS best and cheapest way to reach target
- ▶ "to be expected that the deposit would have the highest effect against littering and that the highest material quality of plastic beverage bottles would be available for recycling".*

*Austrian Report on Meeting 90% target

VOICE
urging greener choices now!

IT WORKS IN OTHER COUNTRIES

Country of adoption	Object of the scheme ¹	Cost-bearing party ²	Deposit (price increment) ³	Return rate ⁴
Norway	Plastic, metal	Producer (voluntary basis)	£0.09–£0.23	96%
Finland	Plastic, metal, glass	Producer/importer	£0.09–£0.35	93%
Sweden	Plastic, metal	Producer/importer	£0.08–£0.17	88%
Denmark	Plastic, metal, glass	Producer/importer	£0.12–£0.35	89%
Germany	Plastic, metal, glass	Producer/importer	£0.22	97%
The Netherlands	Plastic	Producer/importer	£0.22	95%
Israel	Plastic, metal, glass	Producer/distributor/importer	£0.06	77%

How to fund?

- Increase EPR rates from:
 €0.002c -> €1c (PET)
 €0.001c -> €1/4 c (AL)
- Sale of Recyclate
- Unclaimed Deposits
- Save money on litter cleanup costs/street bin collections/street sweeping

Establishment costs:					
	€20,000,000	Cross-subsidised by Repak from the €104M plastic fees generated from non-bottle plastic packaging.			
Running Costs:					
	€70,000,000.00	Financed through unclaimed deposits, sale of recyclate and producer contribution			
	PET and AL Producers fees	Unclaimed deposits PET	Unclaimed deposits Aluminium cans	Sale of Recyclate	Total Revenue
yr 1&2 (80% returned)					
with .15 deposit	€11,626,000	27,510,000	18,390,000	7,126,160	64,652,160
€20 deposit	€11,626,000	36,680,000	24,520,000	7,126,160	79,952,160
yr 3&4 (90% returned)					
with .15 deposit	€11,626,000	€13,755,000	9,195,000	8,017,000	42,593,000
€20 deposit	€11,626,000	18,340,000	12,260,000	8,017,000	50,243,000

VOICE

URging greener choices now!

Mindy O'Brien
Coordinator

mindy@voiceireland.org

www.voiceireland.org