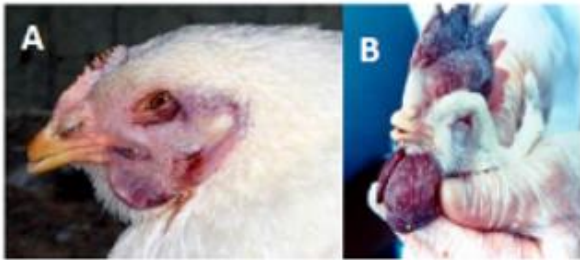


How to recognise avian influenza



A & B: Swollen head, and discharges; blue discoloration of wattle and comb



C: Ruffled feathers. **D:** Twisting of head and neck



E & F: Blue discoloration of shanks

Clinical signs of avian influenza

Symptoms may include any of the following:

Highly pathogenic avian influenza (HPAI)

- Depression
- Loss of appetite and excessive thirst
- Cessation of egg laying
- Respiratory signs (coughing, sneezing)
- Ruffled feathers
- Nervous signs (drooping wings, dragging legs, twisting of the head and neck, circling, complete paralysis)
- Swelling and blue discoloration of combs and wattles
- Blue discoloration of shanks
- Diarrhoea
- Sudden death
- Mortality rates up to 100%

Low pathogenic avian influenza (LPAI)

- Mild respiratory disease
- Depression
- Drop in egg production