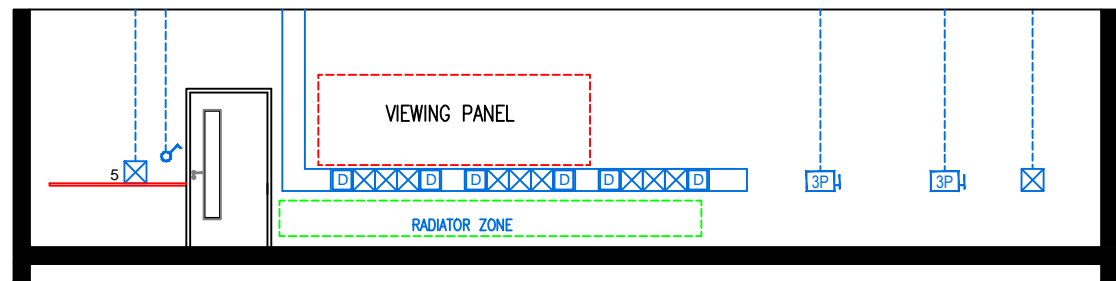
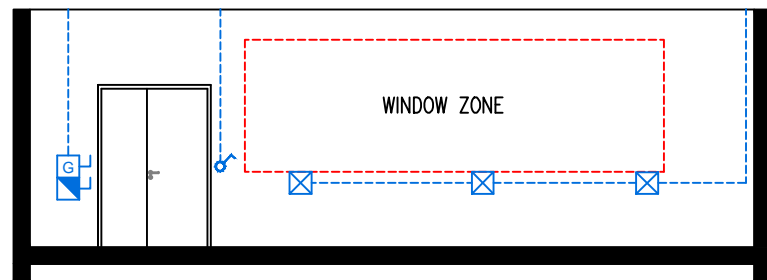


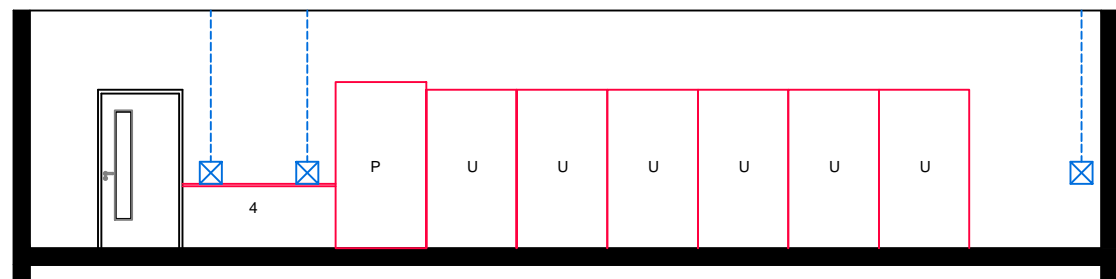
ELEVATION: A - A



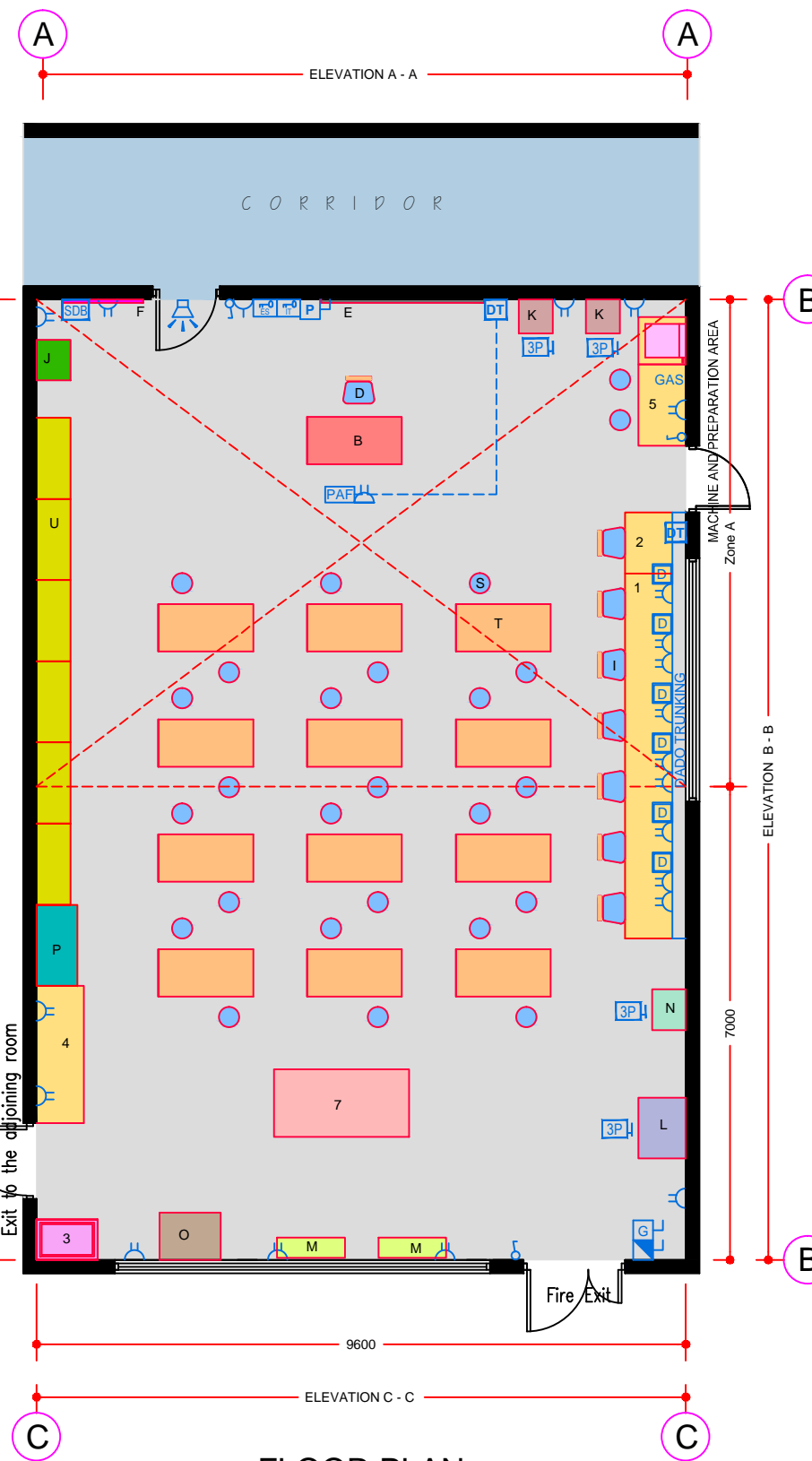
ELEVATION: B - B



ELEVATION: C - C



ELEVATION: D - D



FLOOR PLAN

TECHNICAL NOTES

1. This document provides guidance in relation to the requirements for a Construction Studies/ Material Technologies Room.
2. This document should be read in conjunction with the Technical Guidance Documents (TDGs) as published by the Department of Education & Skills.
3. Refer to Drawing Ref No. RT-ICT-A-100 'Data Projector Installation' for detailed requirements.
4. Final position of network points and associated power outlets shall be above desk/worktop height.
5. Dado trunking shall feed from above in ground floor situations and from ceiling void below if room is located on upper floors.
6. In teaching spaces containing data projectors manual two way switching shall be provided on the row of lights nearest the teaching wall.
7. The exact location of the Data Projector and associated twin outlet and Projector Audio Faceplate (PAF) to be agreed with the Client during design stage and included in the tender documents.
8. Control heating to room using 2-port valve and lockable digital type electronic room thermostat.
9. Natural light and ventilation required to area marked on plan "Zone A".
10. Sander (J) should not be connected to the centralised dust extraction system.

FURNITURE & EQUIPMENT SCHEDULES

FIXED FURNITURE		Quantity	Code
1	Worktop 5400 x 900 x 710 min. high, underbench storage	01	CWT
2	900 x 900 x 710 min. high removable worktop	01	CWT
3	Belfast sink 900 x 600 with H & C supply	--	BS
4	Worktop 2350 x 600 x 850 high	--	WTT
5	Science bench	--	SBC
6	Craft table 2000 x 1000 x 850 high	01	CTA

LOOSE FURNITURE		Quantity	Code
B	Teacher's desk 1200 x 600 x 760 high	01	T4
D	Teacher's chair 460 high	01	S5
E	Whiteboard 3600 x 1200 with sliding T-Square	01	CTU/M
F	Pinboard 1200 x 1200	01	PB
I	Student computer chair height adjustable	07	SCC
S	Student's stool 600 high stackable	24	S2H
T	Student's workbench 1400 x 650 x 850 high	12	WWS
U	Student lockers 1200 x 500 x 2400 high	06	WWE
P	Tool press 2200 x 1200 x 2100	01	WW2

Appropriate provision of loose furniture for Special Education Needs should be made as required.

EQUIPMENT		Quantity	Code
J	Sander	01	AT/808
K	Drill (3 phase)	02	AT/807
L	Bandsaw (3 phase)	01	AT/802
M	Lathe	02	AT/801
N	Morticer (3 phase)	01	AT/803
O	Sharpening machine	01	AT/809

BUILDING SERVICES LEGEND

BUILDING SERVICES ENGINEERING SYMBOLS	Plan	Elevation
Light Switches		
Single Switched Socket Outlets		
Single Switched Socket Outlets (under worktop)		
Cleaner's Socket Outlet (not controlled by isolator)		
Twin Switched Socket Outlets		
Water Boiler Point		
Cooker or Built-in Oven Point		
Data Projector Isolating Switch		
Single Phase Power Supply		
3 Phase Power Point		
Mechanical Ventilation Power Point		
Key Operated Isolating Switch on ICT Installation only		
Key Operated Isolator/ knockout Button on Electrical Supply		
Emergency Knockout Button on Electrical Supply		
Gas Pressure Proving System Control Panel		
Emergency Knockout Button on Gas Supply		
PA Loudspeaker		
Telephone Point		
Network Point		
Projector Audio Faceplate (PAF)		
Sub-distribution Board (possible location)		
Dado Rail Trunking		
Dado Trunking (vertical drop/ rise)		
Radiator		

GENERAL NOTES:

1. This drawing is for information and reference only, designers are responsible for co-ordination issues and compliance with Building Regulations.
2. Doors shall provide 850 mm clear opening width, except where indicated otherwise.
3. Do not scale the drawing. Use figured dimensions only. All dimensions given are in millimetres.
4. All room dimensions are "internal dimensions".
5. Area = net internal area of the room.
6. All elevations are internal room elevations.
7. Any discrepancies between this document and other documents shall be reported to the Department.

POST-PRIMARY SCHOOL ROOM LAYOUTS:

CONSTRUCTION STUDIES / MATERIALS TECHNOLOGY ROOM (136 m²)

DRG NO:	ISSUE NO:	SCALE:	DATE:
RT - 019	02	1: 100 @ A3	Sept 2011

AN ROINN OIDEACHAIS AGUS SCILEANNA
THE DEPARTMENT OF EDUCATION AND SKILLS

Planning and Building Unit