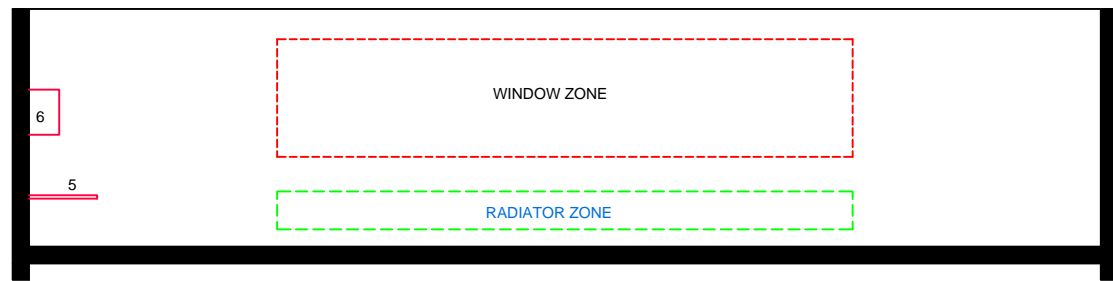
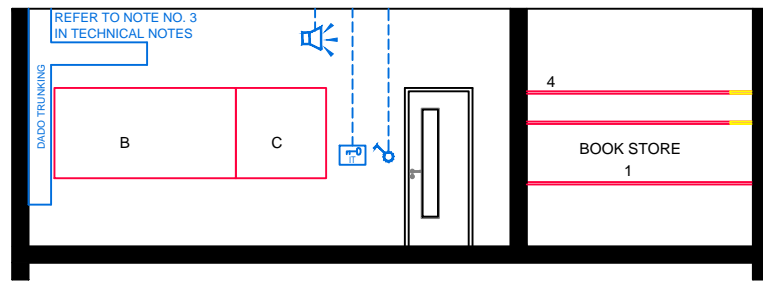


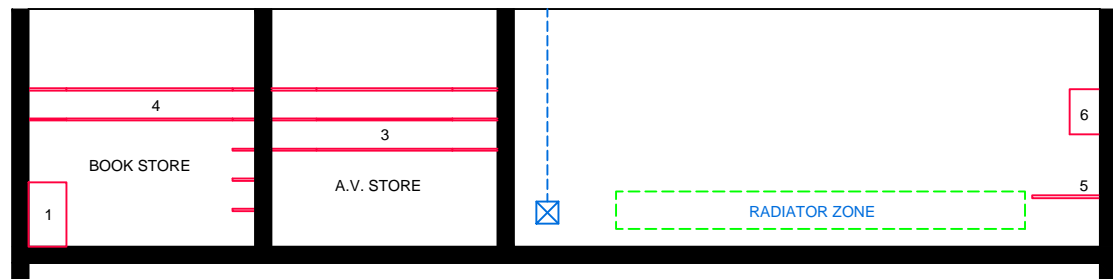
ELEVATION: A - A



ELEVATION: B - B



ELEVATION: C - C



ELEVATION: D - D



FLOOR PLAN

TECHNICAL NOTES

1. This document provides guidance in relation to the requirements for a Library & Ancillary Stores.
2. This document should be read in conjunction with the Technical Guidance Documents (TDGs) as published by the Department of Education & Skills.
3. Refer to Drawing Ref No. RT-ICT-A-100 'Data Projector Installation' for detailed requirements.
4. Final position of network points and associated power outlets shall be above desk/worktop height.
5. Dado trunking shall feed from above in ground floor situations and from ceiling void below if room is located on upper floors.
6. In teaching spaces containing data projectors manual two way switching shall be provided on the row of lights nearest the teaching wall.
7. Control heating to room using 2-port valve and lockable digital type electronic room thermostat.
8. A.V and bookstore to be designed as secure areas with outward opening security door, appropriate locks, hinge bolts and steel frames. There should be no windows to these areas.

FURNITURE & EQUIPMENT SCHEDULES

FIXED FURNITURE		Quantity	Code
1	Base Unit 1800 x 850 mm high	01	BU
3	Three tier fixed shelving, 500 deep, total length 8000	as shown	FS3/6
4	Two tier adjustable shelving, 300 deep over worktop and five tier adjustable shelving 300 deep elsewhere in book store, total length 8000	as shown	AS2/3
5	Worktop 9600 x 900 x 710 high underbench storage	01	CWT
5A	Removable worktop 900x900x710 high	02	CWT
6	High level storage	5.5	HL6
LOOSE FURNITURE		Quantity	Code
A	Student's table 600 x 600 x 760 high	30	T2
B	White Board 2400 1200	01	WB2
C	Pin Board 1200 x 1200	01	PB
E1	Five tier, free standing bookshelves 400 deep x 1800 high in modules 900 wide (total 28 bays)	02	LSDB.8
E2	Free standing magazine units 600 deep x 1800 high in modules 900 wide (total 8 bays)	01	LSDM.8
F	Book trolley 900 x 500	06	BTR
G	Teacher's desk 1200 x 600 x 760 high	01	T4
H	Student's chair 460 high	30	S1E0
J	Teachers Chair 460 high	01	S5
K	Moveable white board	01	MW
L	Student computer chair height adjustable	11	SCC

Appropriate provision of loose furniture for Special Education Needs should be made when required.

BUILDING SERVICES LEGEND

BUILDING SERVICES ENGINEERING SYMBOLS	Plan	Elevation
Light Switches		
Single Switched Socket Outlets		
Single Switched Socket Outlets (under worktop)		
Cleaner's Socket Outlet (not controlled by isolator)		
Twin Switched Socket Outlets		
Water Boiler Point		
Cooker or Built-in Oven Point		
Data Projector Isolating Switch		
Single Phase Power Supply		
3 Phase Power Point		
Mechanical Ventilation Power Point		
Key Operated Isolating Switch on ICT Installation only		
Key Operated Isolator/ knockout Button on Electrical Supply		
Emergency Knockout Button on Electrical Supply		
Gas Pressure Proving System Control Panel		
Emergency Knockout Button on Gas Supply		
PA Loudspeaker		
Telephone Point		
Network Point		
Projector Audio Faceplate (PAF)		
Sub-distribution Board (possible location)		
Dado Rail Trunking		
Dado Trunking (vertical drop/ rise)		
Radiator		

- GENERAL NOTES:**
1. This drawing is for information and reference only, designers are responsible for co-ordination issues and compliance with Building Regulations.
 2. Doors shall provide 850 mm clear opening width, except where indicated otherwise.
 3. Do not scale the drawing. Use figured dimensions only. All dimensions given are in millimetres.
 4. All room dimensions are "internal dimensions".
 5. Area = net internal area of the room.
 6. All elevations are internal room elevations.
 7. Any discrepancies between this document and other documents shall be reported to the Department.

POST-PRIMARY SCHOOL ROOM LAYOUTS:

LIBRARY & ANCILLARY STORES

(136 m²)

DRG NO: RT - 023.2	ISSUE NO: 02	SCALE: 1: 100 @ A3	DATE: Sept 2011
------------------------------	------------------------	------------------------------	---------------------------

AN ROINN OIDEACHAIS AGUS SCILEANNA
THE DEPARTMENT OF EDUCATION AND SKILLS

Planning and Building Unit