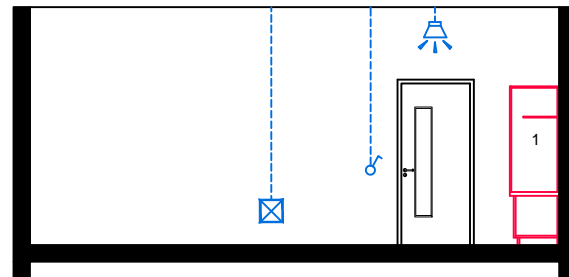
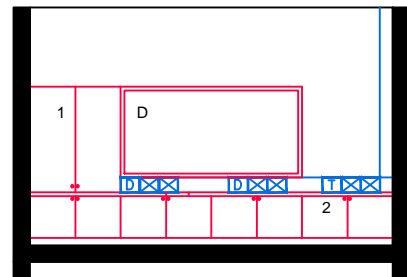


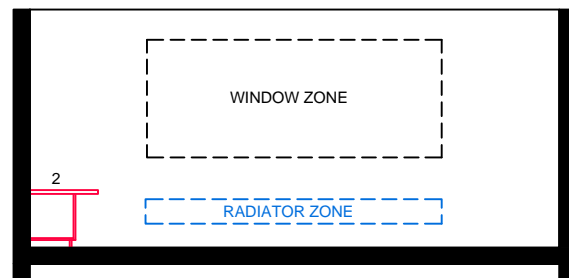
ELEVATION: A-A



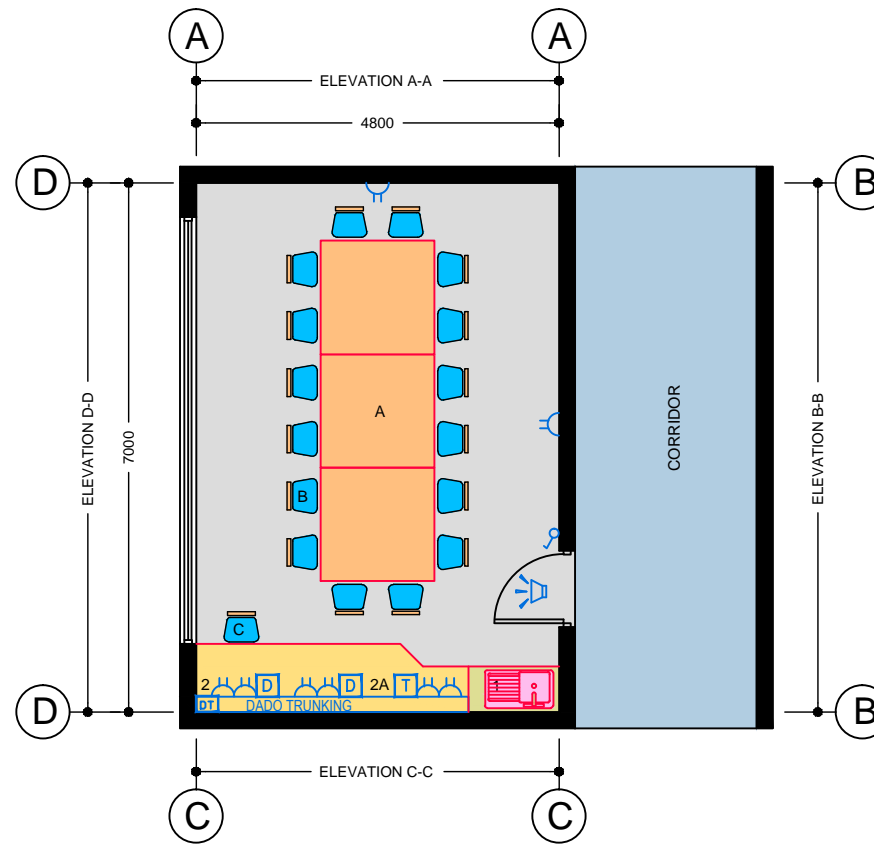
ELEVATION: B-B



ELEVATION: C-C



ELEVATION: D-D



PLAN

TECHNICAL NOTES

1. This document provides guidance in relation to the requirements for a Meeting Room.
2. This document should be read in conjunction with the Technical Guidance Documents (TDGs) as published by the Department of Education & Skills.
3. Provision to be made for ceiling mounted data projector
4. Final position of network points and associated power outlets shall be above desk/worktop height.
5. Dado trunking shall feed from above in ground floor situations and from ceiling void below if room is located on upper floors.
6. Control heating to room using 2-port valve and lockable digital type electronic room thermostat.
7. The proposed layout shown on this drawing to be read as an example, rather than a definitive layout.

FURNITURE & EQUIPMENT SCHEDULES

FIXED FURNITURE		Quantity	Code
1	Sink Unit 1200x650x760 mm high with inset stainless steel sink and drainer, top to match adjacent worktop; enclosed double doors - total height 210 0mm	01	MTR
2	Worktop, splayed, 760 mm high with low level storage	01	MTR

LOOSE FURNITURE		Quantity	Code
A	Tables 1500x1500x760 mm high	03	SDT
B	Chairs - upholstered	16	S5
C	Computer chairs	01	S8
D	Pinboard - 2400x1200 mm	01	PB

Appropriate provision of loose furniture for Special Education Needs should be made when required.

EQUIPMENT		Quantity	Code
None			

BUILDING SERVICES LEGEND

BUILDING SERVICES ENGINEERING SYMBOLS		Plan	Elevation
Light Switches		☐	☐
Single Switched Socket Outlets		⊕	⊕
Single Switched Socket Outlets (under worktop)		⊕	⊕
Cleaner's Socket Outlet (not controlled by isolator)		⊕	⊕
Twin Switched Socket Outlets		⊕	⊕
Water Boiler Point		⊕	⊕
Cooker or Built-in Oven Point		⊕	⊕
Data Projector Isolating Switch		⊕	⊕
Single Phase Power Supply		⊕	⊕
3 Phase Power Point		⊕	⊕
Mechanical Ventilation Power Point		⊕	⊕
Key Operated Isolating Switch on ICT Installation only		⊕	⊕
Key Operated Isolator/ knockout Button on Electrical Supply		⊕	⊕
Emergency Knockout Button on Electrical Supply		⊕	⊕
Gas Pressure Proving System Control Panel		⊕	⊕
Emergency Knockout Button on Gas Supply		⊕	⊕
PA Loudspeaker		⊕	⊕
Telephone Point		⊕	⊕
Network Point		⊕	⊕
Projector Audio Faceplate (PAF)		⊕	⊕
Sub-distribution Board (possible location)		⊕	⊕
Dado Rail Trunking		⊕	⊕
Dado Trunking (vertical drop/ rise)		⊕	⊕
Radiator		⊕	⊕

- GENERAL NOTES:**
1. This drawing is for information and reference only, designers are responsible for co-ordination issues and compliance with Building Regulations.
 2. Doors shall provide 850 mm clear opening width, except where indicated otherwise.
 3. Do not scale the drawing. Use figured dimensions only. All dimensions given are in millimetres.
 4. All room dimensions are "internal dimensions".
 5. Area = net internal area of the room.
 6. All elevations are internal room elevations.
 7. Any discrepancies between this document and other documents shall be reported to the Department.

POST-PRIMARY SCHOOL ROOM LAYOUTS:

**MEETING ROOM
(34 m²)**

DRG NO: RT - 030	ISSUE NO: 01	SCALE: 1: 100 @ A3	DATE: Sept 2011
----------------------------	------------------------	----------------------------------	---------------------------

**AN ROINN OIDEACHAIS AGUS SCILEANNA
THE DEPARTMENT OF EDUCATION AND SKILLS**

Planning and Building Unit

