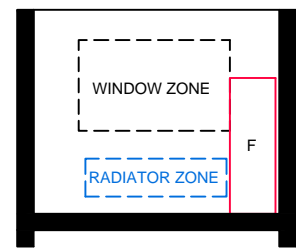


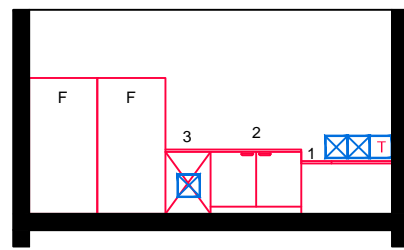
ELEVATION: A-A



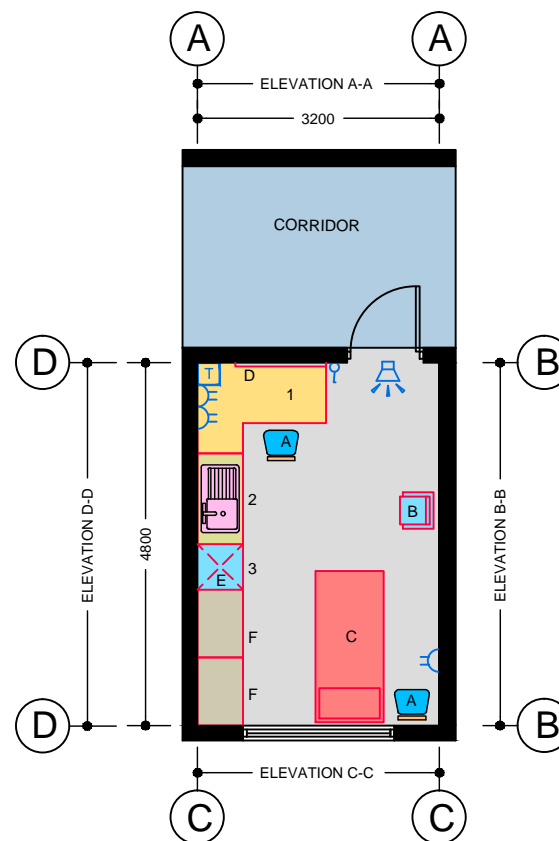
ELEVATION: B-B



ELEVATION: C-C



ELEVATION: D-D



TECHNICAL NOTES

1. This document provides guidance in relation to the requirements for a First Aid Room.
2. This document should be read in conjunction with the Technical Guidance Documents (TDGs) as published by the Department of Education & Skills.
3. Final position of network points and associated power outlets shall be above desk/worktop height.
4. Blinds to be provided.
5. TRVs to be fitted to radiators

FURNITURE & EQUIPMENT SCHEDULES

FIXED FURNITURE		Quantity	Code
1	Workstation 800mm wide x 760mm high	---	OWS
2	Sink unit - 1200x600x900mm high	01	SSU
3	Worktop only - 600x600x900mm high	01	---

LOOSE FURNITURE		Quantity	Code
A	Nurse's Chair	02	S5
B	Easy Low Chair	01	S4
C	Couch	01	EC
D	Pinboard	01	PB
F	Storage Press - 900x600x1800 mm high	02	SC1

Appropriate provision of loose furniture for Special Education Needs should be made when required.

EQUIPMENT		Quantity	Code
E	Undercounter Fridge	01	FR

BUILDING SERVICES LEGEND

BUILDING SERVICES ENGINEERING SYMBOLS	Plan	Elevation
Light Switches	☐	☐
Single Switched Socket Outlets	⊕	⊕
Single Switched Socket Outlets (under worktop)	⊕	⊕
Cleaner's Socket Outlet (not controlled by isolator)	⊕	⊕
Twin Switched Socket Outlets	⊕	⊕
Water Boiler Point	⊕	⊕
Cooker or Built-in Oven Point	⊕	⊕
Data Projector Isolating Switch	⊕	⊕
Single Phase Power Supply	⊕	⊕
3 Phase Power Point	⊕	⊕
Mechanical Ventilation Power Point	⊕	⊕
Key Operated Isolating Switch on ICT Installation only	⊕	⊕
Key Operated Isolator/ knockout Button on Electrical Supply	⊕	⊕
Emergency Knockout Button on Electrical Supply	⊕	⊕
Gas Pressure Proving System Control Panel	⊕	⊕
Emergency Knockout Button on Gas Supply	⊕	⊕
PA Loudspeaker	⊕	⊕
Telephone Point	⊕	⊕
Network Point	⊕	⊕
Projector Audio Faceplate (PAF)	⊕	⊕
Sub-distribution Board (possible location)	⊕	⊕
Dado Rail Trunking	⊕	⊕
Dado Trunking (vertical drop/ rise)	⊕	⊕
Radiator	⊕	⊕

GENERAL NOTES:

1. This drawing is for information and reference only, designers are responsible for co-ordination issues and compliance with Building Regulations.
2. Doors shall provide 850 mm clear opening width, except where indicated otherwise.
3. Do not scale the drawing. Use figured dimensions only. All dimensions given are in millimetres.
4. All room dimensions are "internal dimensions".
5. Area = net internal area of the room.
6. All elevations are internal room elevations.
7. Any discrepancies between this document and other documents shall be reported to the Department.

POST-PRIMARY SCHOOL ROOM LAYOUTS:

FIRST AID ROOM (15 m²)

DRG NO: RT - 031	ISSUE NO: 01	SCALE: 1: 100 @ A3	DATE: OCT 2010
----------------------------	------------------------	----------------------------------	--------------------------

AN ROINN OIDEACHAIS AGUS SCILEANNA THE DEPARTMENT OF EDUCATION AND SKILLS

Planning and Building Unit

