

TECHNICAL NOTES

1. This document provides guidance in relation to the requirements for a GP Kitchen.
2. This document should be read in conjunction with the Technical Guidance Documents (TDGs) as published by the Department of Education & Skills.
3. Final position of network points and associated power outlets shall be above desk/worktop height.
4. Low level socket behind fridge and dishwasher
5. Durable, non slip floor finish.
6. Wall tiling as shown.

FURNITURE & EQUIPMENT SCHEDULES

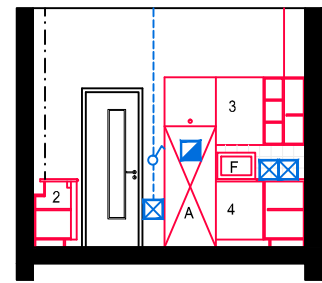
FIXED FURNITURE		Quantity	Code
1	Double bowl sink and drainer: 1500x600x900mm	01	DSU
2	Split level worktop - min. 3m long	---	GPW
3	High level shelving - 800mm high	---	HL8
4	Base Unit: 600x900mm high	---	BU
5	Wall mounted s/s WHB with integrated splash-back	01	---
6	5 tier adjustable shelving	---	AS
7	Water Boiler	01	---
8	Extract hood & ducting	01	---

LOOSE FURNITURE		Quantity	Code
D	Drawer Unit	01	---
H	Chairs: upholstered, 525mm high	02	SSH

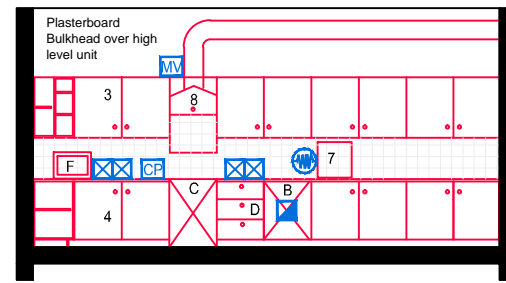
EQUIPMENT		Quantity	Code
A	Fridge/Freezer - 600x600x1500mm	01	FFR
B	Undercounter dishwasher - 600x600mm	01	DW
C	Cooker - 600x600x900mm	01	---
F	Microwave Oven	02	---

BUILDING SERVICES LEGEND

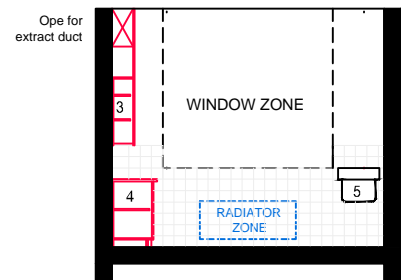
BUILDING SERVICES ENGINEERING SYMBOLS	Plan	Elevation
Light Switches		
Single Switched Socket Outlets		
Single Switched Socket Outlets (under worktop)		
Cleaner's Socket Outlet (not controlled by isolator)		
Twin Switched Socket Outlets		
Water Boiler Point		
Cooker or Built-in Oven Point		
Data Projector Isolating Switch		
Single Phase Power Supply		
3 Phase Power Point		
Mechanical Ventilation Power Point		
Key Operated Isolating Switch on ICT Installation only		
Key Operated Isolator/ knockout Button on Electrical Supply		
Emergency Knockout Button on Electrical Supply		
Gas Pressure Proving System Control Panel		
Emergency Knockout Button on Gas Supply		
PA Loudspeaker		
Telephone Point		
Network Point		
Projector Audio Faceplate (PAF)		
Sub-distribution Board (possible location)		
Dado Rail Trunking		
Dado Trunking (vertical drop/ rise)		
Radiator		



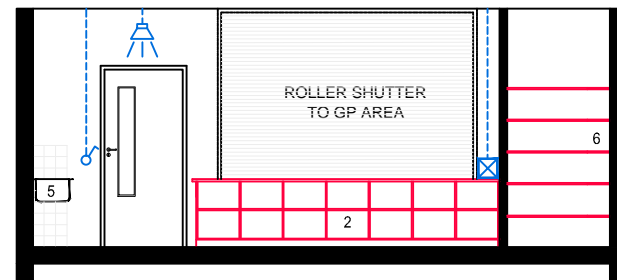
ELEVATION: A-A



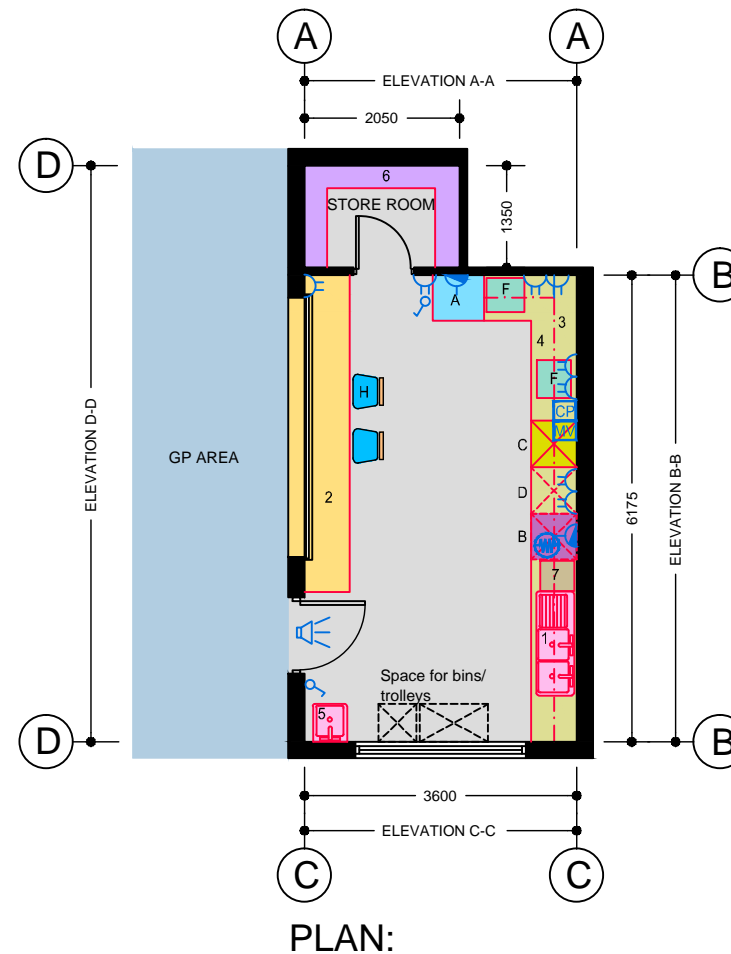
ELEVATION: B-B



ELEVATION: C-C



ELEVATION: D-D



PLAN:

GENERAL NOTES:

1. This drawing is for information and reference only, designers are responsible for co-ordination issues and compliance with Building Regulations.
2. Doors shall provide 850 mm clear opening width, except where indicated otherwise.
3. Do not scale the drawing. Use figured dimensions only. All dimensions given are in millimetres.
4. All room dimensions are "internal dimensions".
5. Area = net internal area of the room.
6. All elevations are internal room elevations.
7. Any discrepancies between this document and other documents shall be reported to the Department.

POST-PRIMARY SCHOOL ROOM LAYOUTS:

GP KITCHENETTE (25 m²)

DRG NO: RT - 033	ISSUE NO: 01	SCALE: 1: 100 @ A3	DATE: Sept 2011
----------------------------	------------------------	----------------------------------	---------------------------

AN ROINN OIDEACHAIS AGUS SCILEANNA THE DEPARTMENT OF EDUCATION AND SKILLS

Planning and Building Unit

