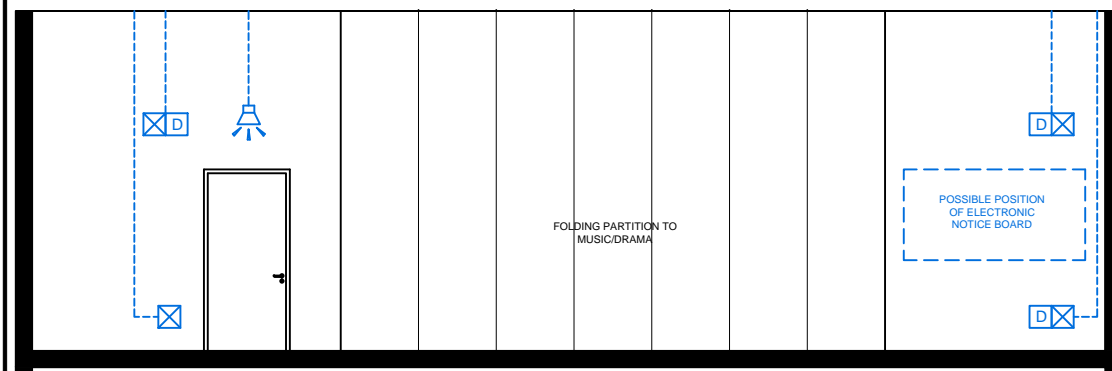
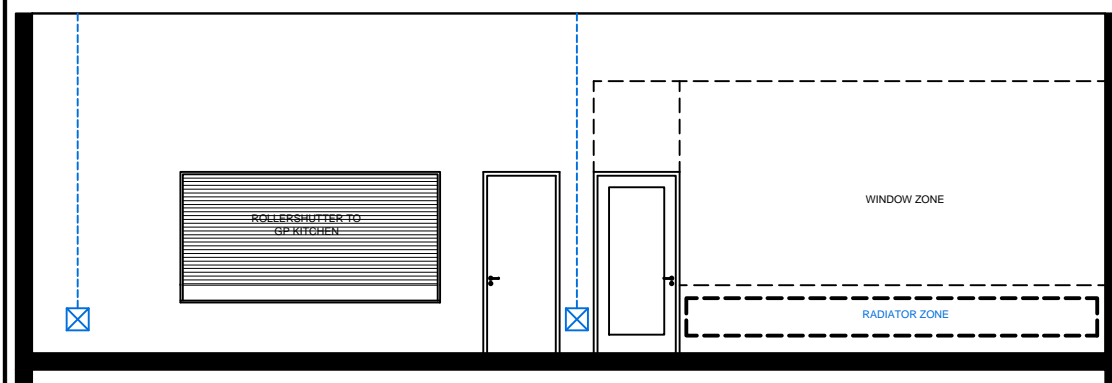


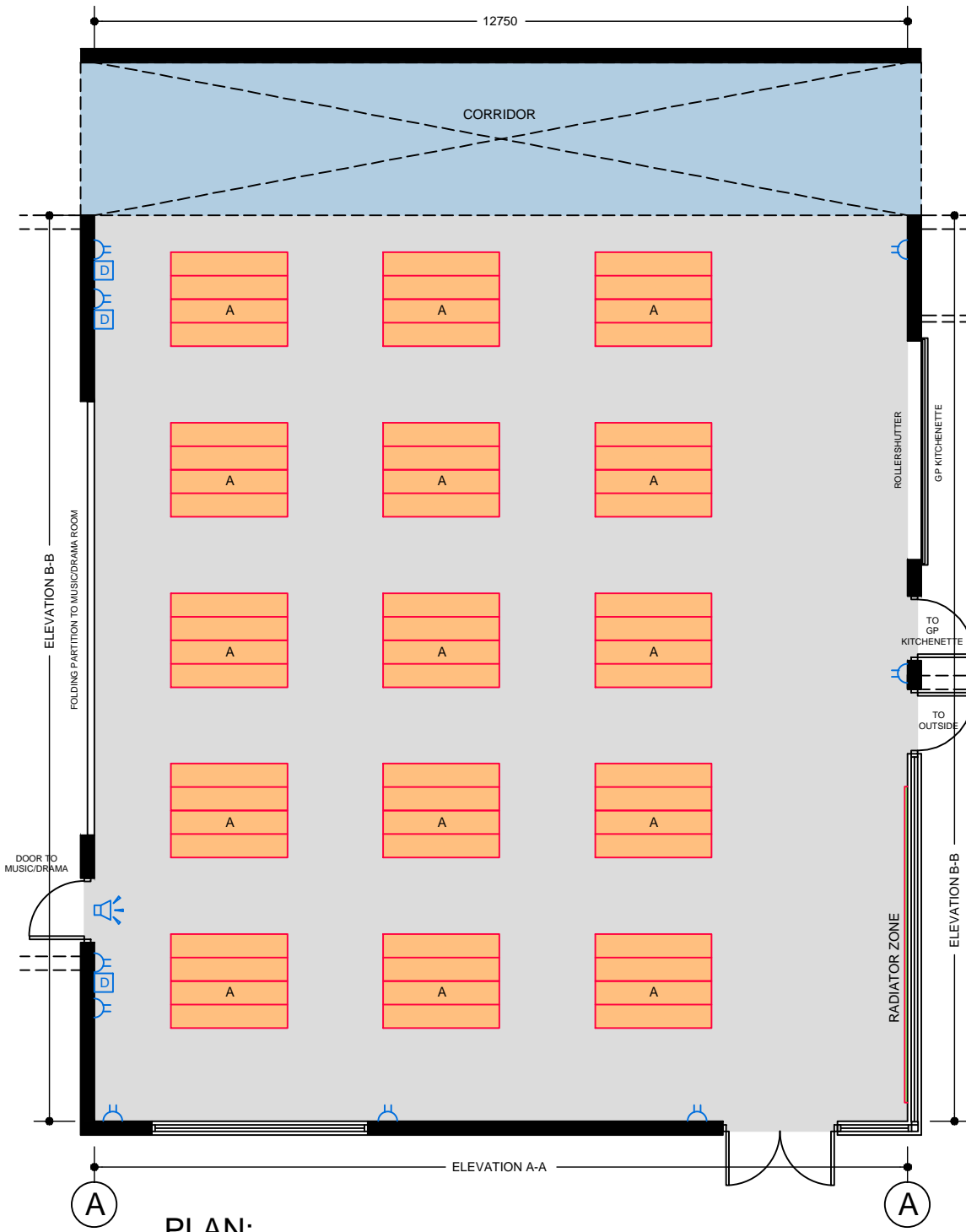
ELEVATION: A-A



ELEVATION: B-B



ELEVATION: C-C



PLAN:

TECHNICAL NOTES

1. This document provides guidance in relation to the requirements for a General Purpose/ Dining Area.
2. This document should be read in conjunction with the Technical Guidance Documents (TDGs) as published by the Department of Education & Skills.
3. Final position of network points and associated power outlets shall be above desk/worktop height.
4. Dado trucking from above or ceiling void below if classroom located on first floor.
5. Control heating to room using 2-port valve and lockable digital type electronic room thermostat.
6. TRVs to be fitted to radiators
7. M&E services to be provided for drinking fount/chilled water in GP Area near kitchen.
8. Floor finish to match that of Music/Drama Room.
9. Lighting controls to be designed by services engineer as part of overall lighting strategy
10. The proposed layout shown on this drawing to be read as an example, rather than a definitive layout.
11. Provision to be made for installation of a ceiling mounted projector to project onto a suitable wall area

FURNITURE & EQUIPMENT SCHEDULES

FIXED FURNITURE		Quantity	Code
None			
LOOSE FURNITURE		Quantity	Code
A Table and bench units: 1825mm long; seat height 425mm; table height 740mm		30	S9
Appropriate provision of loose furniture for Special Education Needs should be made when required.			
EQUIPMENT		Quantity	Code
None			

BUILDING SERVICES LEGEND

BUILDING SERVICES ENGINEERING SYMBOLS	Plan	Elevation
Light Switches		
Single Switched Socket Outlets		
Single Switched Socket Outlets (under worktop)		
Cleaner's Socket Outlet (not controlled by isolator)		
Twin Switched Socket Outlets		
Water Boiler Point		
Cooker or Built-in Oven Point		
Data Projector Isolating Switch		
Single Phase Power Supply		
3 Phase Power Point		
Mechanical Ventilation Power Point		
Key Operated Isolating Switch on ICT Installation only		
Key Operated Isolator/ knockout Button on Electrical Supply		
Emergency Knockout Button on Electrical Panel		
Gas Pressure Proving System Control Panel		
Emergency Knockout Button on Gas Supply		
PA Loudspeaker		
Telephone Point		
Network Point		
Projector Audio Faceplate (PAF)		
Sub-distribution Board (possible location)		
Dado Rail Trunking		
Dado Trunking (vertical drop/ rise)		
Radiator		

GENERAL NOTES:

1. This drawing is for information and reference only, designers are responsible for co-ordination issues and compliance with Building Regulations.
2. Doors shall provide 850 mm clear opening width, except where indicated otherwise.
3. Do not scale the drawing. Use figured dimensions only. All dimensions given are in millimetres.
4. All room dimensions are "internal dimensions".
5. Area = net internal area of the room.
6. All elevations are internal room elevations.
7. Any discrepancies between this document and other documents shall be reported to the Department.

POST-PRIMARY SCHOOL ROOM LAYOUTS:

GENERAL PURPOSE/ DINING AREA (Example) (180 m²)

DRG NO: RT - 037	ISSUE NO: 01	SCALE: 1: 100 @ A3	DATE: Sept 2011
----------------------------	------------------------	------------------------------	---------------------------

**AN ROINN OIDEACHAIS AGUS SCILEANNA
THE DEPARTMENT OF EDUCATION AND SKILLS**

Planning and Building Unit